

**BROIL ELEMENTS**  
 #1,2,7,8 CONTROLLED  
 3,4,5,6 - UNCONTROLLED  
 9,10,11,12

**SOLID STATE RELAYS**  
 250V, 25A CONTACT RATING  
 3-32VDC INPUT

5.S.S.R.1 D2425  
 5.S.S.R.2 D2425

ALL WIRES #18 AWG THIN UNLESS NOTED

ELEMENTS: 4081, 240V, 2200W → 208V/120V, 3#, 50/60HZ, 69A  
 4075, 250V, 2200W → 230V/120V, 3#, 50/60HZ, 71A

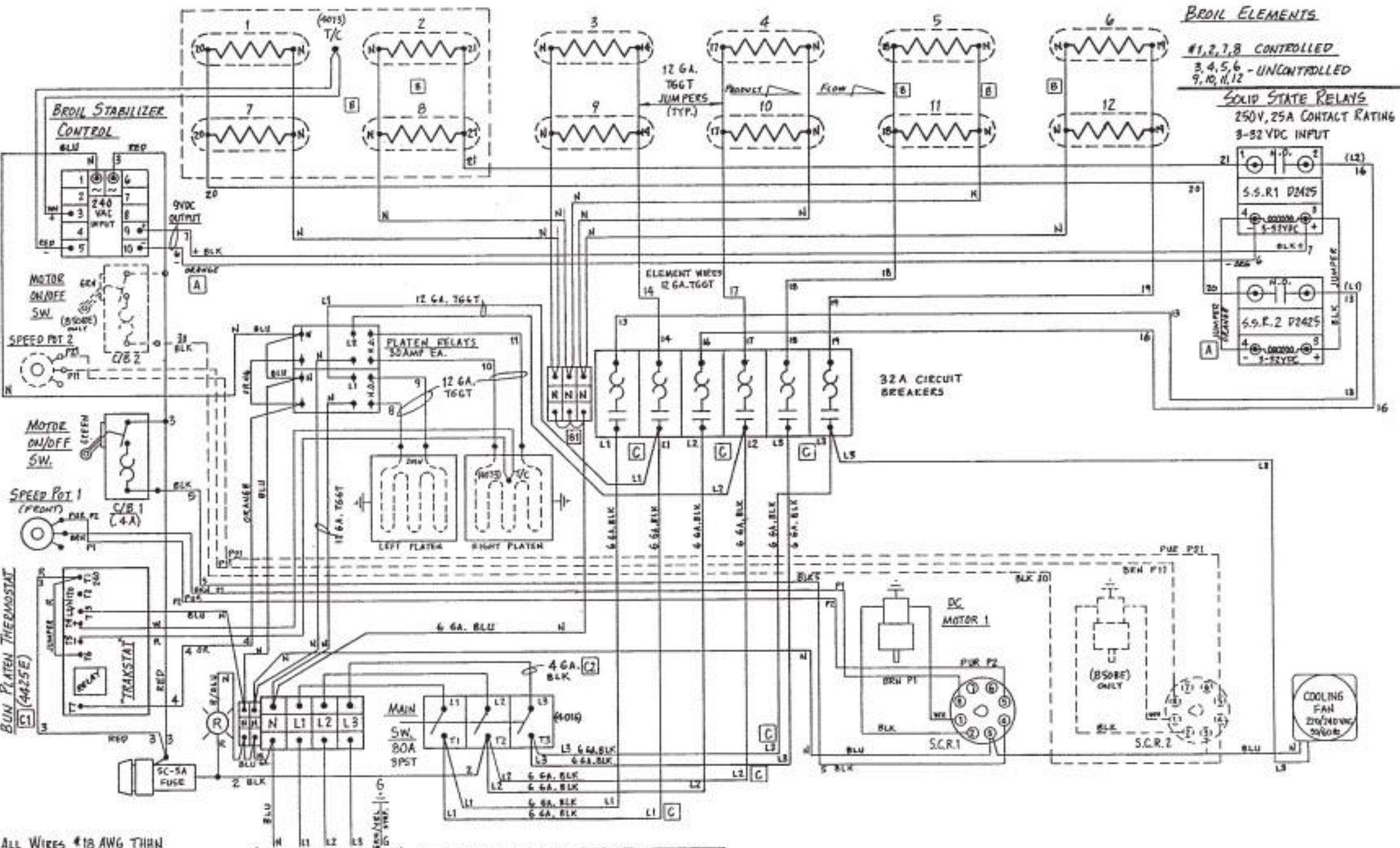
5 CONDUCTOR

C	NEW PLATEN THERMOSTAT, DELETE C/B JUMPERS, INCREASE WIRE SIZE, W/S-1) PH 402-P 2) 6 GA.	10-7-95 DZ
B	DELETE RECEPT, PWR. WIRE TO C/B; ADD D: JUMPERS; TRIPLE WIRE COND. W/S: 1) DUAL WIRES 2) BLK/GR	5-31-96 DZ
A	REVISE TERMINAL STRIP; ADD 'N' BLK	5-10-15 DZ

**BROIL ELEMENTS**

#1, 2, 7, 8 CONTROLLED  
 3, 4, 5, 6 - UNCONTROLLED  
 9, 10, 11, 12

**SOLID STATE RELAYS**  
 250V, 25A CONTACT RATING  
 3-32VDC INPUT

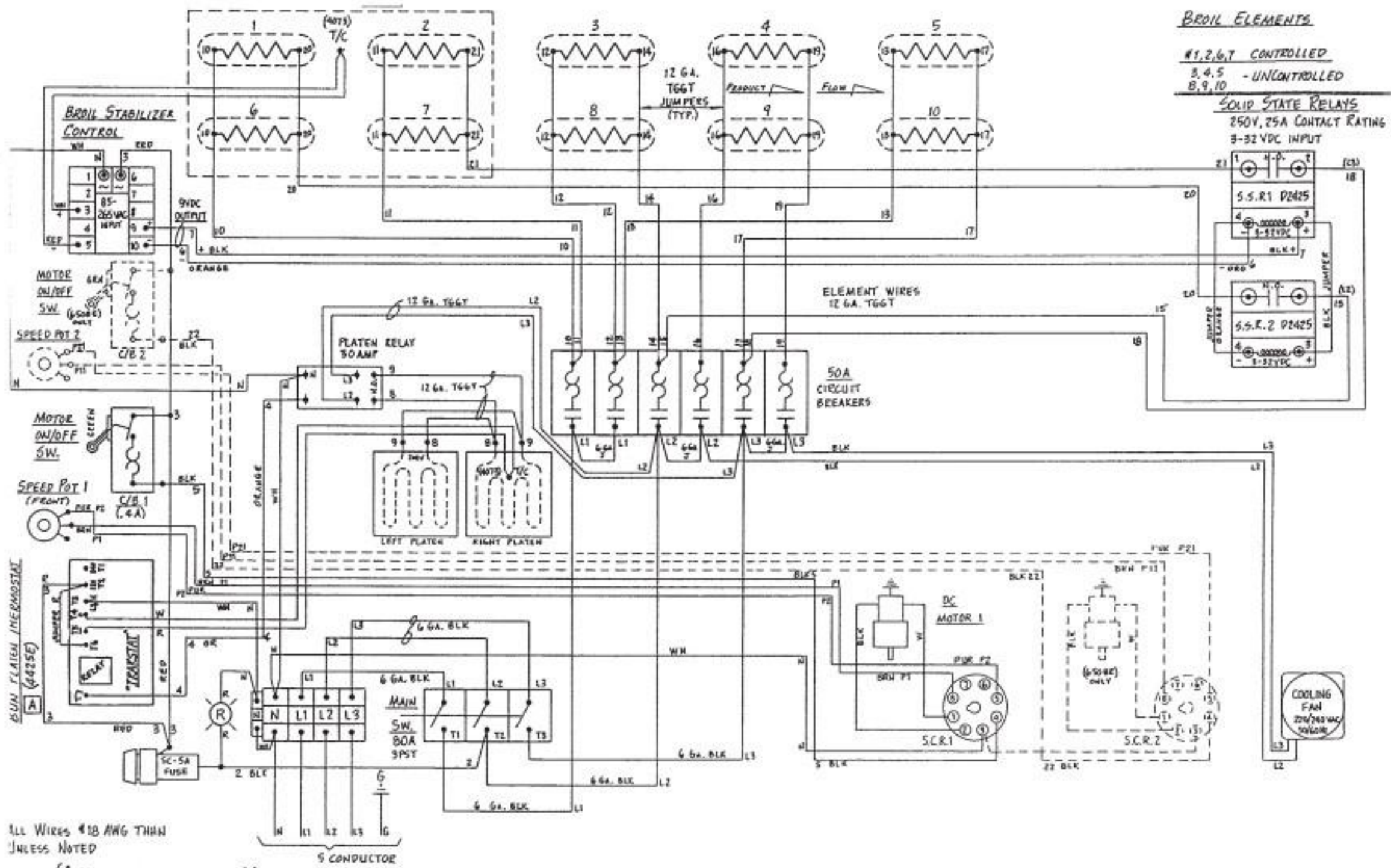


All Wires #18 AWG THIN UNLESS NOTED

5 CONDUCTOR

ELEMENTS  
 #4075, 250V, 2200W → 380V/220V, 3φ, 50/60HZ, 39A  
 #4076, 245V, 2200W → 415V/240V, 3φ, 50/60HZ, 39A

C	NEW PLATEN THERMOSTAT, DELETE C/D JUMPERS, INCREASE WIRE SIZE. WAS: (1) PN 4071-R (2) 6 GA.	11-7-95	DZ
B	ADD "N" BLOCK, REV. "W" WIRING. WAS: (1) INT 10	6-11-85	DZ
A	CHANGE WIRE COLOR #11 AND #12. WAS BLUE	5-31-81	DZ



**BROIL ELEMENTS**

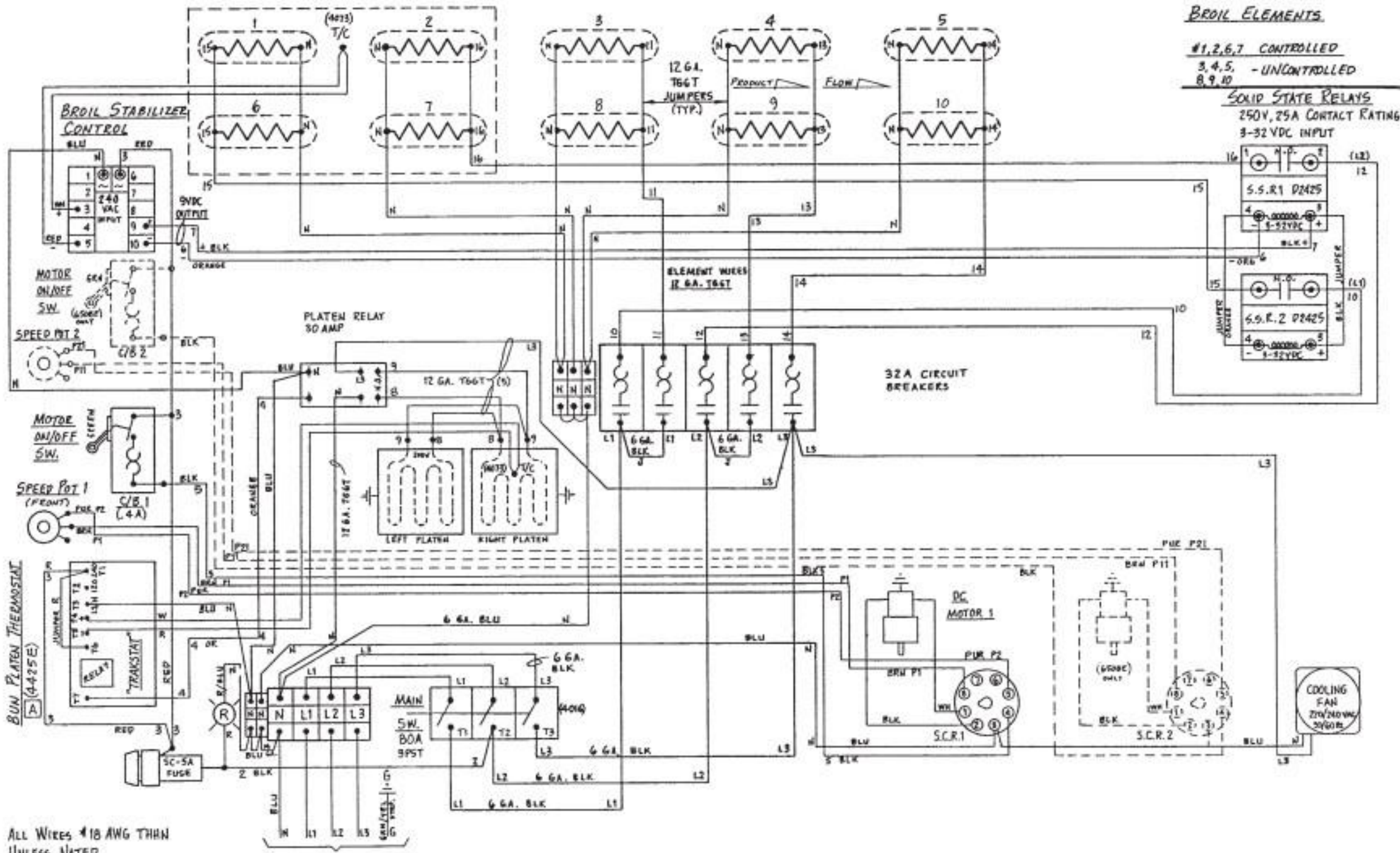
#1,2,6,7 CONTROLLED  
 3,4,5 - UNCONTROLLED  
 8,9,10

**SOLID STATE RELAYS**  
 250V, 25A CONTACT RATING  
 3-32VDC INPUT

ALL WIRES #18 AWG THIN UNLESS NOTED

ELEMENTS  
 #40B1, 240V, 2200W → 208V/120V, 3φ, 50/60HZ, 55A  
 #4075, 240V, 2200W → 230V/120V, 3φ, 50/60HZ, 56A

A NEW PLATEN THERMISTAT, WAS P/N 4071-P 11-7-75/DZ



**BROIL ELEMENTS**

#1,2,6,7 CONTROLLED  
 3,4,5 - UNCONTROLLED  
 8,9,10

**SOLID STATE RELAYS**  
 250V, 25A CONTACT RATING  
 3-32VDC INPUT

ALL WIRES #18 AWG THHN  
 UNLESS NOTED

Elements { 44075, 250V, 2200W → 380V √ 220V, 3φ, 50/60HZ, 31A  
 { 44076, 265V, 2200W → 415V √ 240V, 3φ, 50/60HZ, 30A

[A] NEW PLATEN THERMOSTAT WAS P/N 4071-P [11-7-95] P2