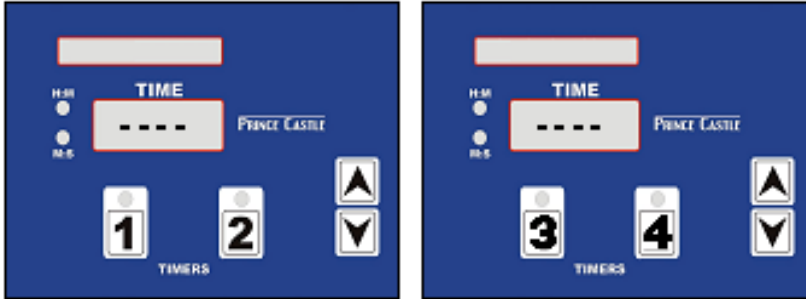


## Product Identification



The 841 series Pro-Timer features multiple channels that can be programmed in pairs to perform up to five functions.

### LIMITED WARRANTY

This product is warranted to be free from defects in material and/or workmanship for a period of two years from date of original installation, not to exceed 30 months from date of shipment from our factory.

Any component which proves to be faulty in material and/or workmanship will be replaced or repaired (at the option of Prince Castle, Inc.) without cost to the customer for parts or labor.

This warranty is subject to the following exceptions/conditions:

- This equipment is portable; charges for on location service (e.g., trip charges and mileage) are not included in the provisions of this warranty.
- Use of any non-genuine Prince Castle parts voids this warranty. All genuine Prince Castle replacement spare parts are warranted for ninety (90) days from date of purchase.
- All labor must be performed by an authorized Prince Castle Service Agency. Failure to do so will void this warranty.
- Damage caused by carelessness, neglect, and/or abuse (e.g., dropping, tampering or altering parts), equipment damaged in shipment, by fire, flood or an act of God is not covered under this warranty.



### TABLE OF CONTENTS

|  |   |
|--|---|
| Product Identification .....           | 1 |
| Safety Information .....               | 2 |
| Important! .....                       | 2 |
| Installation .....                     | 2 |
| Equipment Setup .....                  | 2 |
| Cleaning the Equipment.....            | 2 |
| Preparing Product Using the Timer..... | 3 |
| Programming Mode .....                 | 4 |
| Parts Identification / Function .....  | 5 |
| Troubleshooting Guide .....            | 6 |
| Notes .....                            | 7 |


**PRINCE CASTLE LLC**   
WORLDWIDE

355 East Kehoe Blvd. • Carol Stream, IL 60188  
Phone: 630-462-8800 • Toll Free: 1-800-PCASTLE  
Fax: 630-462-1460 • [www.princecastle.com](http://www.princecastle.com)

|                           |                   |
|---------------------------|-------------------|
| <b>Safety Information</b> | <b>Important!</b> |
|---------------------------|-------------------|

|   |   |
|---|---|
| <p style="text-align: center;"> <b>WARNING!</b></p> <p>Indicates information important to the proper operation of the unit. Failure to observe may result in damage to the equipment and/or severe bodily injury or death.</p> <p style="text-align: center;"> <b>CAUTION!</b></p> <p>Indicates information important to the operation of the unit. Failure to observe may result in damage to the equipment.</p> | <p>Prince Castle reserves the right to change specifications and product design without notice. Such revisions do not entitle the buyer to corresponding changes, improvements, additions or replacements for previously purchased equipment.</p> |
|---|---|

|                     |
|---------------------|
| <b>Installation</b> |
|---------------------|

|   |   |
|---|---|
| <p>Remove the unit from the carton and inspect for signs of damage. If there is damage to the unit:</p> <ul style="list-style-type: none"> <li>• Notify the carrier within 24 hours of delivery,</li> <li>• Save carton and packaging materials for inspection purposes,</li> <li>• Contact your local dealer, or if purchased directly, the Prince Castle Sales Department at 1-800-722-7853 or 630-462-8800 to arrange for a replacement unit.</li> </ul> | <p><b>NOTE:</b> When installing this unit, the ambient temperature at the mounting site should not exceed 37.8°C (100°F).</p> <p style="text-align: center;"> <b>CAUTION</b></p> <p>All electrical connections must be in accordance with local electrical codes and any other applicable codes. Plug the unit into an applicable electrical receptacle.</p> |
|---|---|

|                        |                               |
|------------------------|-------------------------------|
| <b>Equipment Setup</b> | <b>Cleaning the Equipment</b> |
|------------------------|-------------------------------|

|  |   |
|--|---|
| <p>This timer operates on input voltages between 100-240 volts AC, 47-63 Hz.</p> <p>When plugged in, HIGH SPKR VOLUME should appear in both text display windows. (See Adjust Speaker Volume section.) Set the timer for the desired menu items that will be used. (Refer to the Selecting Active Products procedure in the Programming Mode section.)</p> | <p>Do not allow grease to build up on the timer. Wipe it down daily, using a clean damp cloth.</p> <div style="background-color: #cccccc; padding: 5px;"> <p><b>IMPORTANT!</b></p> <p>Do not use abrasive or chemical cleaners on your timer. Doing so may damage the front overlay.</p> </div> |
|--|---|

## Preparing Product Using the Timer

**1** Using the UP and DOWN buttons, scroll through the active products list and select the menu item you wish to prepare.

The left-side UP/DOWN buttons advance the menu items in the left text display window and the right-side UP/DOWN buttons advance the menu items in the right text display window.

**2** Beneath each of the time display windows are the numbered Timer Operate buttons (1-4). Press the appropriate Timer Operate button to start the product timing cycle for a cook sequence.

The next operational procedure to be performed at the end of the current cycle appears in the text display window and the remaining time of the current cycle in the time window.

When the current cycle is complete (Time = 00), an audible signal sounds and the time display flashes.

The displayed procedure must be performed at this time.

During this alarm period, the next cycle has started and the time display shows the remaining time of this next cycle of the product sequence when the alarm is cancelled.

**3** The next operational cooking procedure to be performed appears in the display window when the audible signal is cancelled.

The audible signal can be programmed for manual turn-off or automatic turn-off. (Refer to the Programming Mode section).

After all the timing cycles of the selected product sequence are completed and the final alarm cancelled, the timer returns to an idle state with the text display showing the menu item just prepared and the time display showing four dashes.

**4** Two cook sequences of the same product can be performed simultaneously. Each numbered Timer Operate button initiates an independent cook sequence.

When both Timer Operate buttons are used, an arrow and an asterisk is shown in the text display window, in addition to the upcoming operational procedure to be performed.

The arrow points either left or right, indicating which channel is closest to completing the current cook cycle (Time = 00). This is also the channel that must perform the displayed operational procedure. The time display window shows the countdown time for the channel to which the arrow points.

The asterisk means that another product sequence is also being timed.

**5** To show the remaining time and upcoming operational procedure for another channel, press and hold the button of the desired timer channel.

Release the button to return the displays to the channel closest to completing a cook cycle.

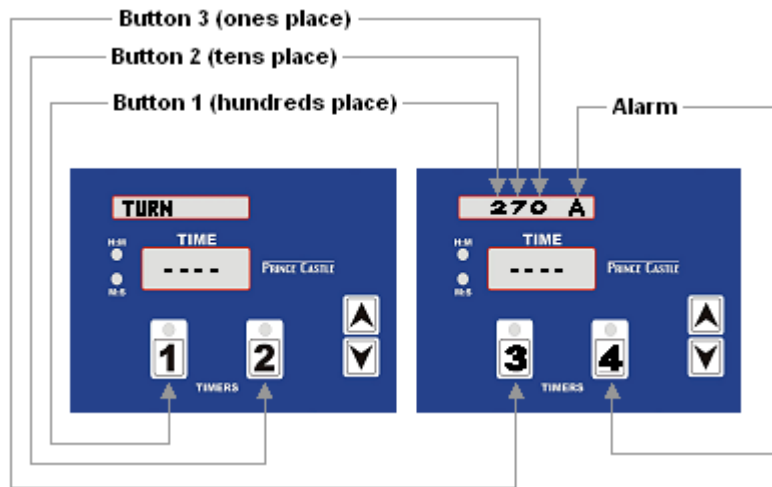
## Programming Mode

To enter Programming Mode, press and hold the button under the left Prince Castle logo for 6 secs.  
The text displays show the Program Number and Revision.

### Selecting Active Products


Use the left-side UP/DOWN arrows to sequence through all the available menu items.  
As the buttons are pressed the names of the available menu items appear in the left-side text display window.  
When the desired item is displayed, YES or NO is displayed in the right-side text display window, indicating if this menu item appears in the active products list.

YES means that, in operating mode, this item appears in the active selection list and can be chosen to prepare the product.  
NO means, that in operating mode, this item does not show up in the active selection list, indicating that this product is not offered.  
Press any of the timer operate buttons to toggle between YES and NO.



### Adjusting Operational Procedure Settings

**1** When a menu item is displayed in the left-side text display window, use the right-side UP/DOWN arrows to sequence through the associated operational procedures for this item.  
The action for each operational procedure is displayed in the left-side text window, while the time (in secs.) until the procedure is to be performed is displayed in the right-side text display window.  
The displayed time is changed as follows:  
A. Use the #1 timer operate button to adjust the 100's place digit of the displayed time value.  
B. Use the #2 timer operate button to adjust the 10's place digit of the displayed time value.  
C. Use the #3 timer operate button to adjust the 1's place digit of the displayed time value

 Setting the operational procedure time to 000 will bypass (delete) the procedure that is being programmed.

**2** The audible alarm can be set to turn off automatically after a specific amount of time or manually by an employee. Pressing the #4 operate button sets the alarm operation as follows:  
A. If an A is displayed along with an operational procedure time value in the right-side text display window, the alarm at the end of this timing period turns OFF automatically after five seconds.  
B. If an M is displayed along with an operational procedure time value in the right-side text display window, an employee must turn OFF the alarm manually at the end of this timing period.  
When all settings adjustments are complete (or if at any time you just wish to exit programming mode), press the button under the right-side Prince Castle logo.  
A message, "Going Back to Run Mode," is momentarily displayed in the text windows, after which time the unit is back in normal Operating Mode.

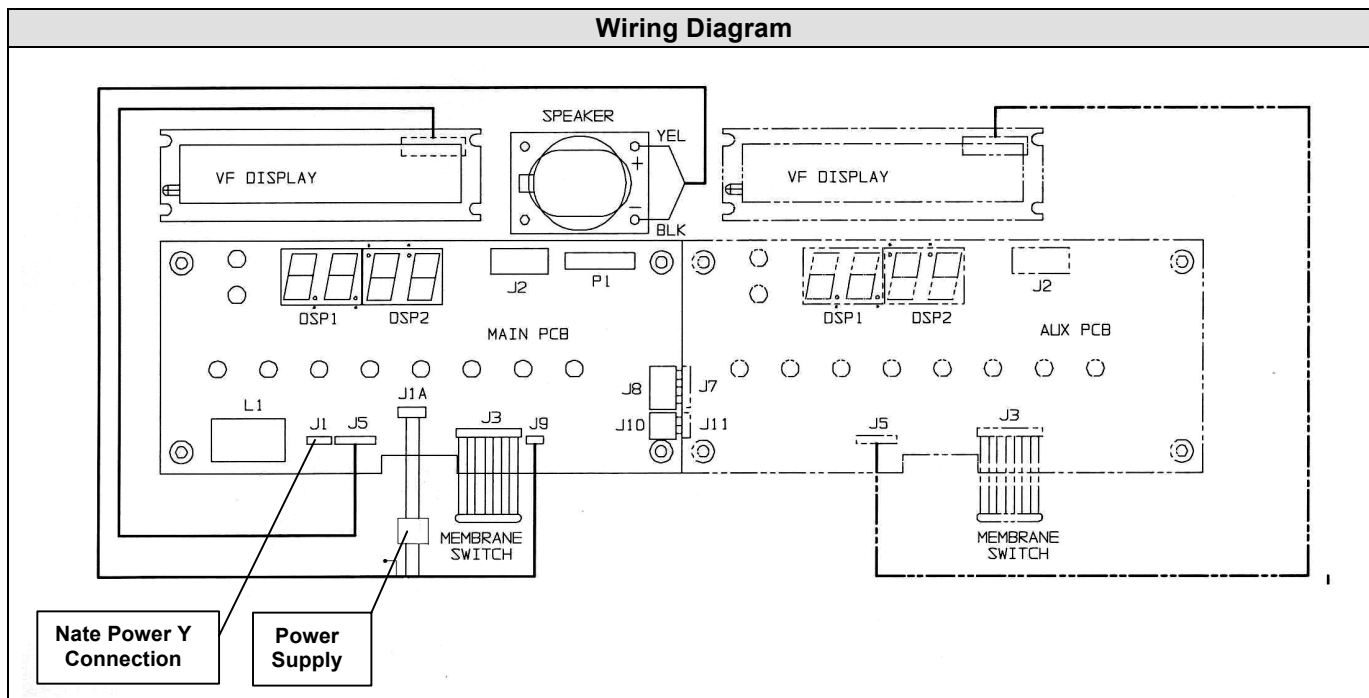
### Speaker Volume Adjust

While in normal Operating Mode, use either of the UP/DOWN arrows to scroll through the active products until either LOW SPKR VOLUME or HIGH SPKR VOLUME is displayed in the appropriate text display window.

To change the currently displayed setting, press either of the operate buttons below the text display window showing the volume message.

Parts Identification / Function

Wiring Diagram



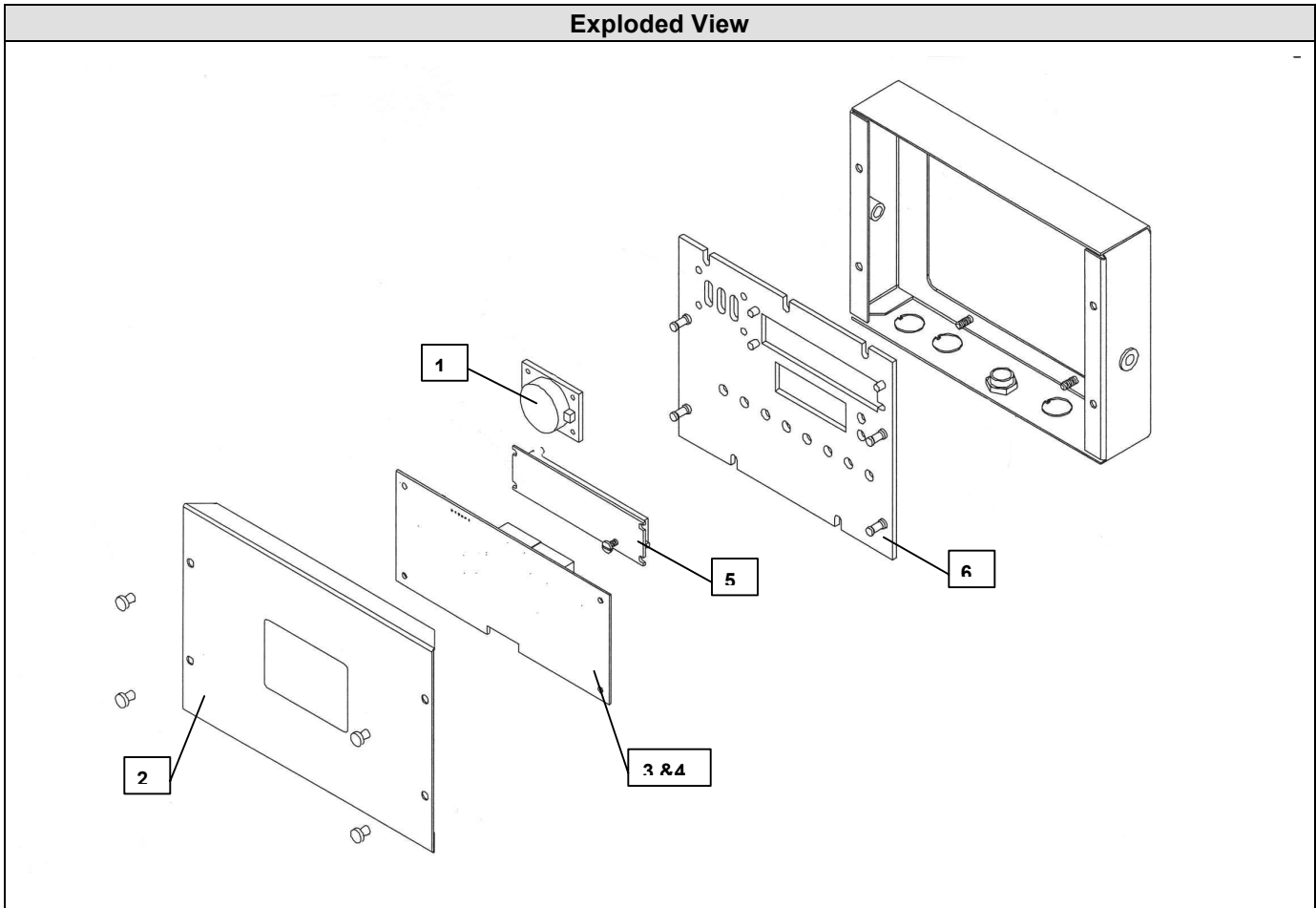
Parts List

| Item | Part No.     | Qty | Description                       |
|------|--------------|-----|-----------------------------------|
| 1.   | 88-709-2-11S | 1   | Kit, Speaker Assy                 |
| 2.   | 69-079S      | 1   | Plastic Push Pin Rivet, Pkg. of 2 |
| 3.   | 840-210S     | 1   | Kit, PCB Main Timer Pro           |
| 4.   | 840-109S     | 1   | Auxiliary PCB                     |
| 5.   | 71-142-02S   | 2   | Display Board                     |
| 6.   | 840-097S     | 2   | Switch Panel Assembly             |

Not Shown:

|     |            |   |                                      |
|-----|------------|---|--------------------------------------|
| 7.  | 72-200-11S | 1 | Power Cord                           |
| 8.  | 72-449S    | 1 | Power Cord (841-PT)                  |
| 9.  | 72-450S    | 1 | Power Cord (841-PTIEC)               |
| 10. | 72-233S    | 1 | Power Cord (841-PTGB)                |
| 11. | 841-001S   | 1 | Assy, Switch Panel, Left (Ch 1 & 2)  |
| 12. | 841-002S   | 1 | Assy, Switch Panel, Right (Ch 3 & 4) |

**Exploded View**



**Troubleshooting Guide**

| <b>Problem</b>  |   |   |
|---|---|---|
|   | Unit unplugged.<br>Store's circuit breaker blown.<br>Defective Power Supply.<br>Circuit inoperable. | Plug in unit.<br>Reset Circuit Breaker.<br>Replace Power Supply.<br>Replace Main Circuit Board. |
| No displays or indicators lit   | Speaker inoperable.<br>Circuit inoperable.  | Replace Speaker.<br>Replace Main Circuit Board.   |
| Absence of Audio Alarm  | Logo Switch inoperable.   | Replace Switch Panel.   |
| Unit will not enter Program Mode  | Arrow Switch inoperable.<br>Circuit inoperable.   | Replace Switch Panel.<br>Replace Main Circuit Board.  |
| Unit enters Program Mode, but cannot change times.  | Circuit inoperable.   | Replace Switch Panel. If problem persists, replace Main Circuit Board.                          |
| Unable to start, stop or store timer presets in Program Mode. Missing or abnormal characters in displays. | Circuit inoperable.   | Replace Switch Panel. If problem persists, replace Main Circuit Board.                          |

