

BROIL ELEMENTS
 #1, 2, 7, 8 CONTROLLED
 3, 4, 5, 6 - UNCONTROLLED
 9, 10, 11, 12

SOLID STATE RELAYS
 250V, 25A CONTACT RATING
 3-32VDC INPUT

ALL WIRES #18 AWG THIN UNLESS NOTED

5 CONDUCTOR

ELEMENTS
 #4081, 240V, 2200W → 208V Y 120V, 3φ, 50/60 HZ, 69A
 #4075, 250V, 2200W → 230V Y 120V, 3φ, 50/60 HZ, 71A

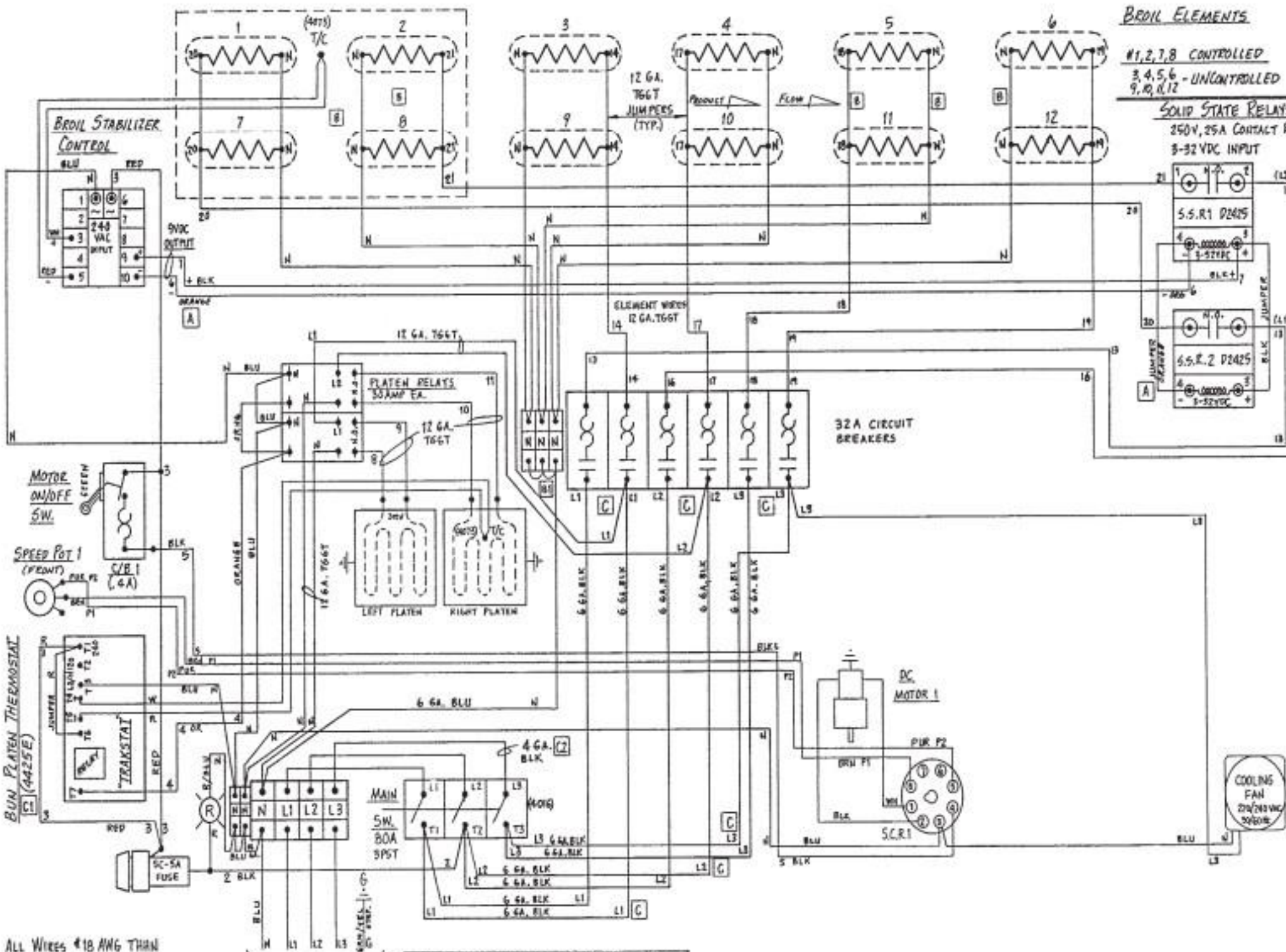
C	NEW PLATEN THERMOSTAT, DELETE C/B JUMPERS, INCREASE WIRE SIZE WAS (1) 10 AWG TO (2) 6 GA.	11-7-95 DZ
B	DELETE RECEPT, PWR. WIRE TO C/B; ADD 13 JUMPERS; CHANGE WIRE COND. NOS: (1) PERL NOTES (2) BLUE	5-31-95 DL
A	REVISE TERMINAL STRIP: ADD 'N' BLOCK	5-18-95 DP

BROIL ELEMENTS

#1, 2, 7, 8 CONTROLLED
 3, 4, 5, 6 - UNCONTROLLED
 9, 10, 11, 12

SOLID STATE RELAYS

250V, 25A CONTACT R.
 3-32VDC INPUT



ALL WIRES #18 AWG THIN UNLESS NOTED

5 CONDUCTOR
 ELEMENTS $\begin{cases} \#4075, 250V, 2200W \rightarrow \{380V\} 220V, 3\phi, 50/60HZ, 39A \\ \#4076, 265V, 2200W \rightarrow \{415V\} 240V, 3\phi, 50/60HZ, 39A \end{cases}$

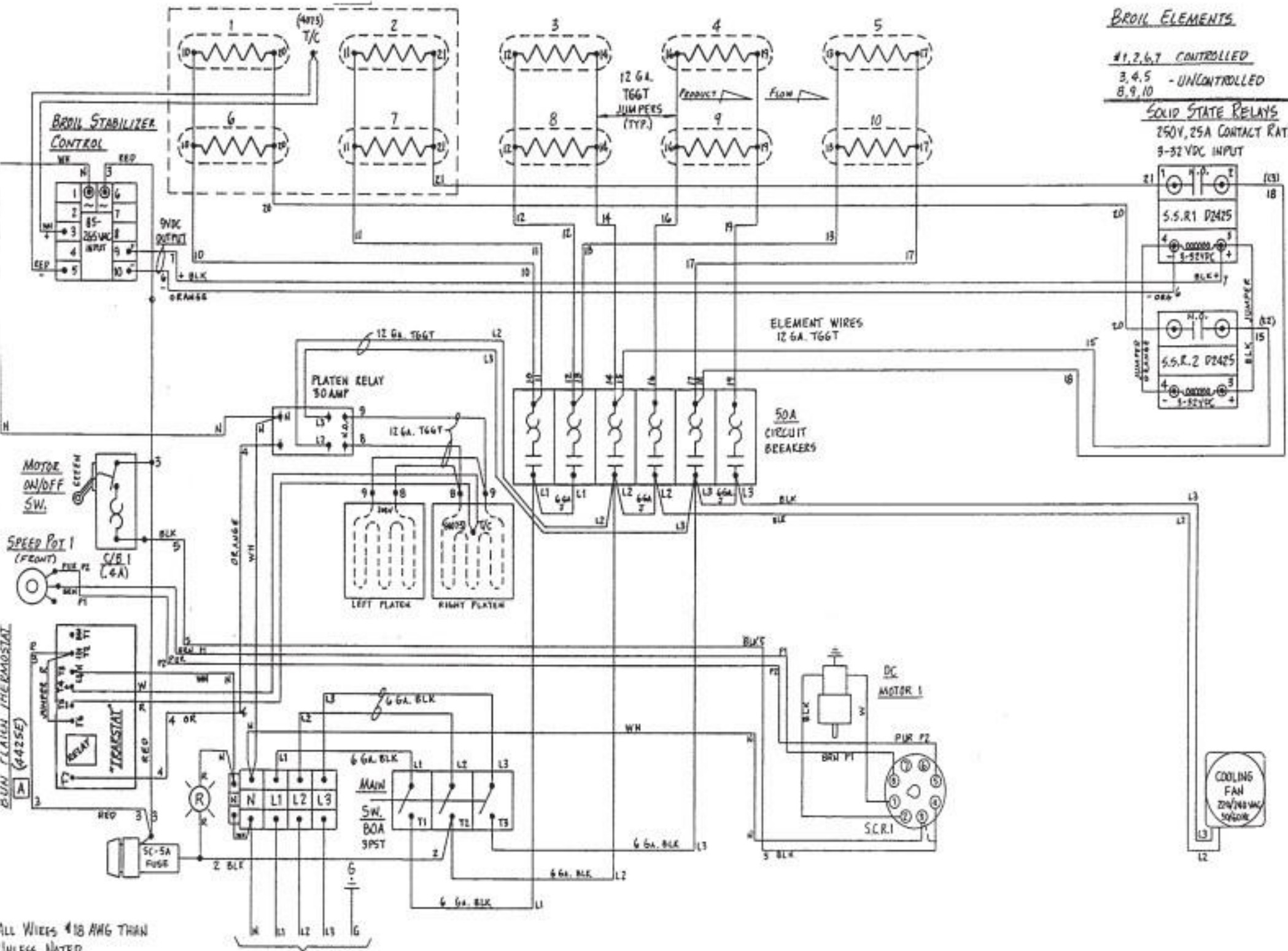
C	NEW PLATEN THERMOSTAT, DELETE C/D JUMPERS, INCREASE WIRE SIZE. WAS: (1) 10N 4071-R (2) 6 GA. (11-7-95) DZ
B	ADD "N" BLOCK, REV. "N" WIRING. WAS: (1) 01110 4-11-95 DZ
A	CHANGE WIRE COLOR # STAB. SW. WAS BLUE 5-31-91 DZ

BROIL ELEMENTS

#1,2,6,7 CONTROLLED
 3,4,5 - UNCONTROLLED
 8,9,10

SOLID STATE RELAYS

250V, 25A CONTACT RATING
 9-32VDC INPUT



ALL WIRES #18 AWG UNLESS NOTED

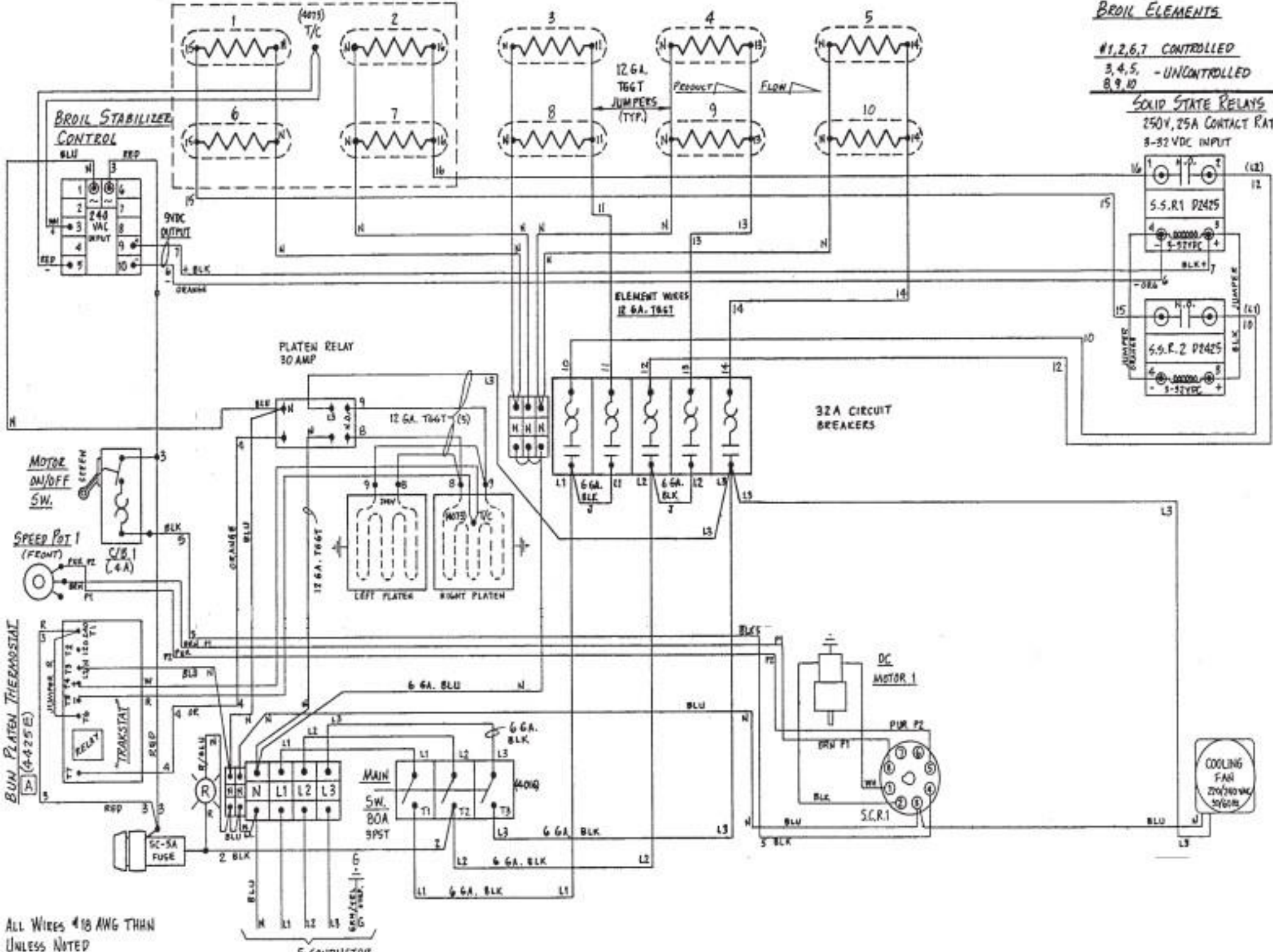
ELEMENTS
 #4081, 240V, 2200W → 208V √ 120V, 3 φ, 50/60HZ, 55 A
 #4075, 250V, 2200W → 230V √ 120V, 3 φ, 50/60HZ, 56 A

A NEW PLATEN THERMOSTAT WAS P/N 4071-P 8-7-95/DZ

Broil Elements

#1,2,6,7 CONTROLLED
 3,4,5 - UNCONTROLLED
 8,9,10

SOLID STATE RELAYS
 250V, 25A CONTACT RATING
 8-32VDC INPUT



ALL WIRES #18 AWG THIN UNLESS NOTED

Elements { 44075, 250V, 2200W → (380V) 220V, 3Φ, 50/60HZ, 31A
 { 44076, 265V, 2200W → (415V) 240V, 3Φ, 50/60HZ, 30A

A NEW PLATEN THERMOSTAT WAS PN 4071-P (1-7-95) PZ

23