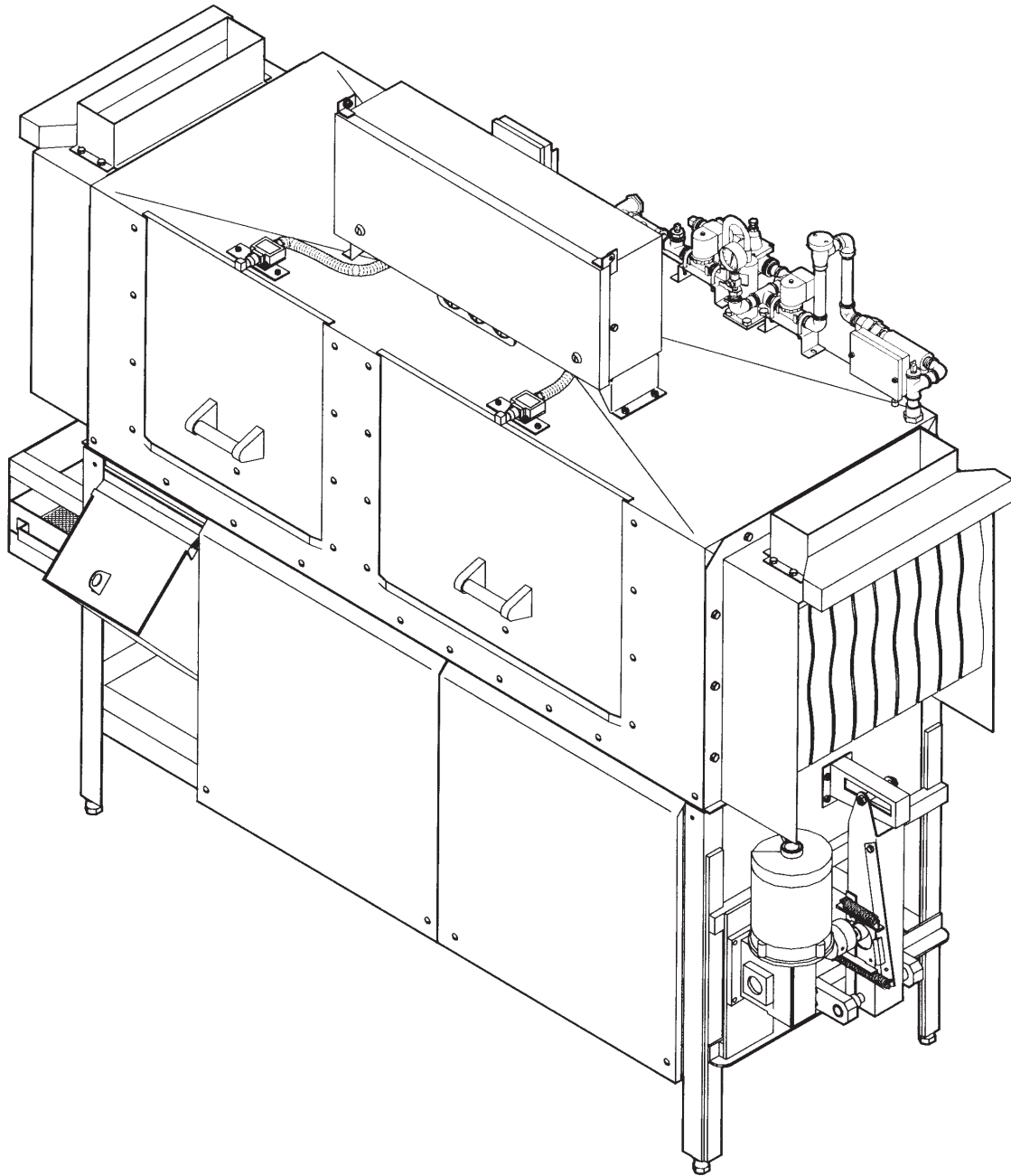


EFFECTIVE: October, 2019

American Dish Service

ADS CONVEYOR DISHWASHER
MODELS: ADC-66 L-R/R-L



PARTS MANUAL

900 Blake Street
Edwardsville, Kansas 66111
(913)422-3700

©8/2019

American Dish Service

The **American Dish Service** part numbers contained in this publication are replacement parts for equipment listed with governmental and regulatory agencies and are specified to maintain the regulatory mark and certification. These parts must only be replaced by those who are trained in the operation and service of commercial dishmachines. Aftermarket parts or modified parts are not compliant or listed with the standards of governmental and regulatory agencies; aftermarket parts are not authorized by ADS for replacement repairs. ADS will not be responsible for any liability if parts are used in the repair of the machine that are not ADS-specified, by those installing non-certified replacement parts or attempts to change the machine's cycle or operation other than as designed and certified. **Read the warnings and cautions provided below before working on or replacing parts on any ADS equipment.**



DANGER

The installation of electrical parts contained in this publication require the following precautions:

The electrical power supplied to this machine is an imminent hazard to life that could result in severe bodily injury or death if not properly installed or connected correctly. When working in the control box or on electrical parts, always disconnect power and perform the appropriate lock-out/tag-out procedure before servicing. Replace the cover to the control box and other protective covers when finished with servicing this equipment before returning the machine to normal operation.

LOOSE ELECTRICAL CONNECTIONS: Damage to the equipment can occur if the following precautions are not observed. Before connecting power to the machine, check all electrical terminals in the control box. Screws can loosen in transit. Loose connections on high amp load terminals such as the pump motor and tank heaters will cause wire burning and component damage during operation and will not be covered under ADS warranty.

"CLEAN CIRCUIT" means the electrical circuit breaker for the dishmachine supplies no other outlets, machines, or lights. GFCI outlets are not recommended for commercial dishmachines; ADS recommends that a single-rack machine be installed with the wire connection (hard-wired) directly from the circuit breaker. All high temp and conveyor equipment must be hard wired. If a plug and socket are used to provide electrical power to a dishmachine in a commercial kitchen, then according to electrical code it must be a GFCI, but not all GFCIs are the same. They must be rated for the Amp draw for the designed circuit.

For Reference: The NEC Article 210.8 regarding GFCI Protection (B) Other Than Dwelling Units (2) Commercial and Institutional Kitchens. All 15 and 20A, 125V receptacles installed in kitchens, even those that do not supply the countertop surface, must be GFCI protected.



WARNING

The chemical feeders and controls contained in this publication require the following precautions:

READ Manufacturer's Manual before Using this Product. For your safety read and observe all warnings in these instructions. While performing installation of parts described in this booklet, wear approved Personal Protective Equipment, including chemically resistant gloves and Safety Eye-Wear.

CHEMICALS: There are potentially hazardous situations when working with industrial cleaning chemicals for dishmachines. See chemical manufacturer's safe practices and SDS or MSDS sheets for handling and installing chemicals and supply containers.

Chemicals can damage or corrode plumbing and stainless parts of the dishmachine. Do not run chemical lines over controls or plumbing. Always secure chemical lines and check regularly for leaks. **If not properly handled, chemicals can cause serious bodily injury. In the event of chemical contact to skin or eyes; wash immediately with fresh water and seek medical attention.**

DE-LIMING THE MACHINE: Because of potential hazards resulting from the combination of chlorine with acid solution, only authorized trained individuals must be allowed to de-lime a commercial dishmachine.

CONTAINERS: The ADS chemical delivery system is designed for 5 gallon pails of industrial low-energy chemical products. Always use chemical resistant safety gloves and safety goggles (indirect-vented or non-vented) when changing chemical buckets. Immediately report spills and refer to your chemical suppliers SDS safety data sheet or MSDS material safety data sheet for information if chemical comes in contact with skin or eyes.

Any modifications to the chemical delivery system for smaller containers must include Closed Loop Chemical Containers (spill proof bottles) in a secured racking system. It is the responsibility of the user of the machine to purchase chemicals in spill proof containers. **FAILURE CAN RESULT IN SERIOUS INJURY.** Never place chemicals in open containers or containers that can be easily tipped over when moving or changing product. Failure to do so will void your ADS warranty.

Chemical supplies must be kept in closed delivery containers to avoid spills or contamination. Do not place chemical solutions in open containers or containers that can be easily tipped over in moving or changing.

Do not open the doors while the machine is in operation. Doing so could result in serious bodily injury from spraying hot water and chemicals.



CAUTION

The door lever arm parts in this publication are installed under spring tension and caution is needed whenever parts are changed. Wear safety glasses when working on the doors and lever. Care should be taken when moving, installing, or replacing any door lever arm parts. Use the ADS lever arm tool to unload the door spring during replacement or adjustment. The spring tension suddenly released can result in pinch or blunt trauma, and puncture wounds. If a wound occurs from the release of spring tension, wash the wound area immediately because of the soils that can accumulate on the metal parts and seek medical attention.

NOTICE

BEFORE YOU BEGIN: American Dish Service provides this information as a service to our customers. **Keep all instructions for future reference.** ADS reserves the right to alter or update this information at any time. Should you desire to make sure that you have the most up-to-date information, we would direct you to the appropriate document on our web site: www.americandish.com. **It is your obligation as the customer to ensure that the replacement parts for the machine are installed safely and properly, and when completed, the machine is left in proper and safe working order.** Electrical, Plumbing, and Chemical hookup must be performed by a qualified professional who will ensure that the equipment is installed in accordance with all applicable Codes, Ordinances, and Safety requirements. Failure to follow the installation instructions will void the warranty. **ADS assumes no liability or control over the installation of the equipment or replacement parts. Product failure due to improper installation is not covered under the ADS Warranty.**

Plumbing parts:

When working on the water inlet manifold, first relieve the water line pressure by turning off the water supply to the machine then energize the machine's fill valve. By doing this the manifold will empty of water. Turn off the electrical power and lock out/tag out the machine. It will then be safe to open the plumbing inlet manifold.

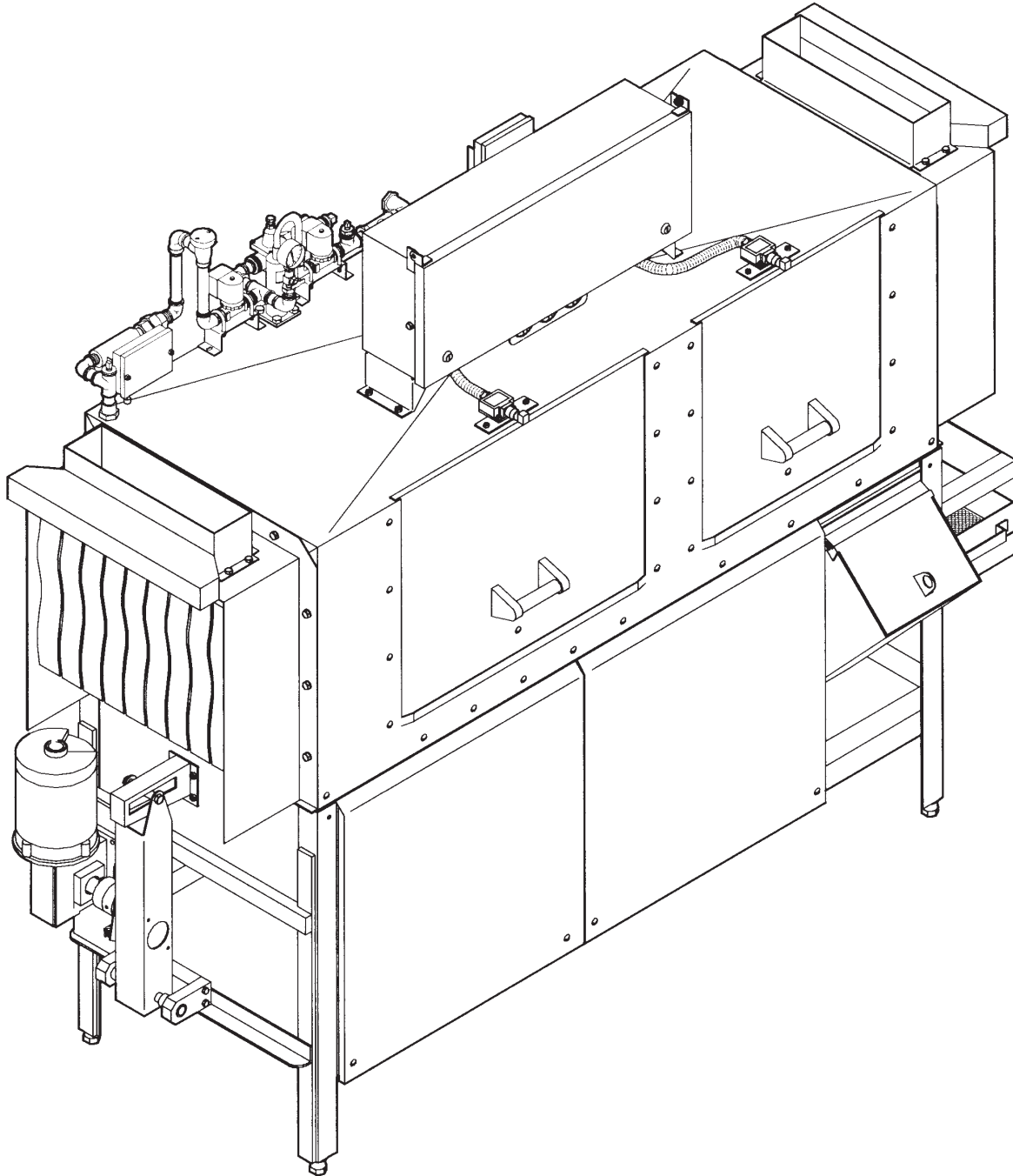
TANKLESS WATER HEATERS have shown to be problematic for commercial dishmachines. It has been the experience of ADS that tankless supply systems require multiple units plumbed in sequence with a recirculation loop to achieve proper pressure and temperature.

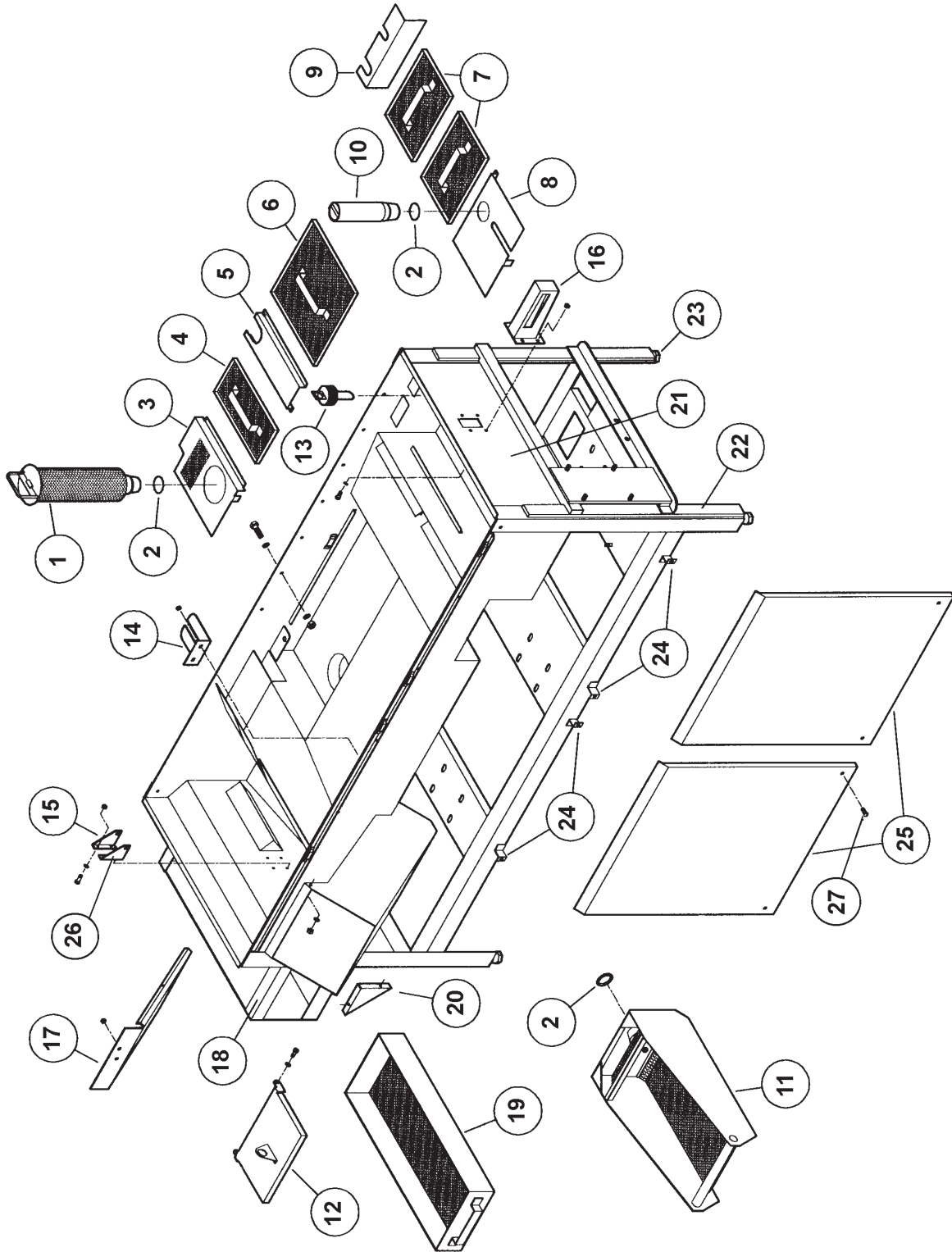
Check with the tankless water heater manufacturer, they may recommend a storage tank to guarantee proper flow and line pressure to the machine. Failure to provide adequate water quantity, pressure and temperature to the machine will cause the machine to function improperly and is not the responsibility of ADS. Improperly installing ADS equipment or parts in this manner could void the warranty. All costs associated with providing an adequate water supply to the machine is the sole responsibility of the user.

Drain replacement parts should not be reduced in size, all drain lines should remain the same size as it exits the dishmachine or larger. If you have questions, call 800-922-2178 or visit our website at www.AmericanDish.com

213-0066 L-R / 214-0066 R-L
ADC-66 Conveyor
Dishwasher

American Dish Service

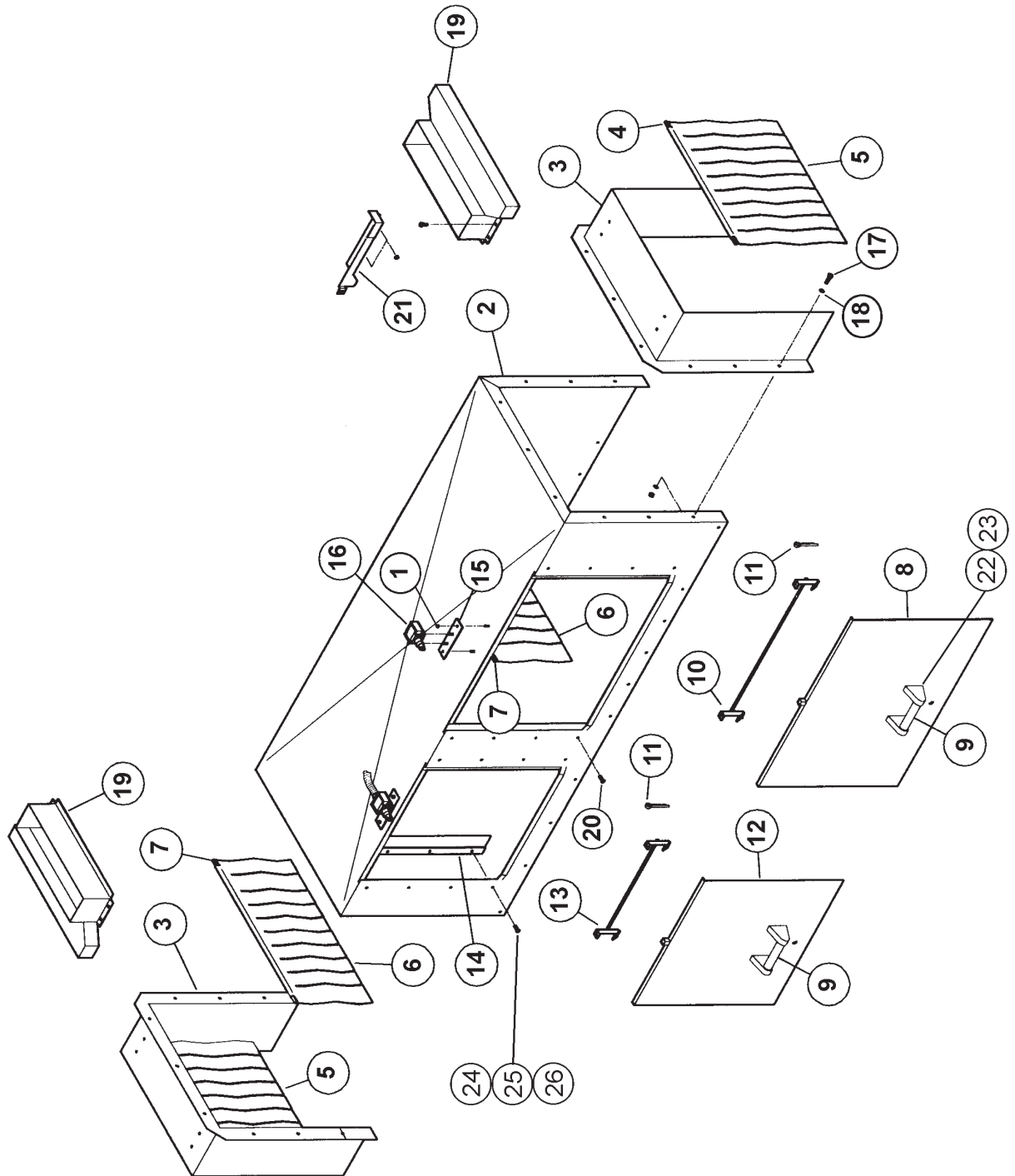




261-0300
Cabinet Assembly
ADC-66 L-R

American Dish Service

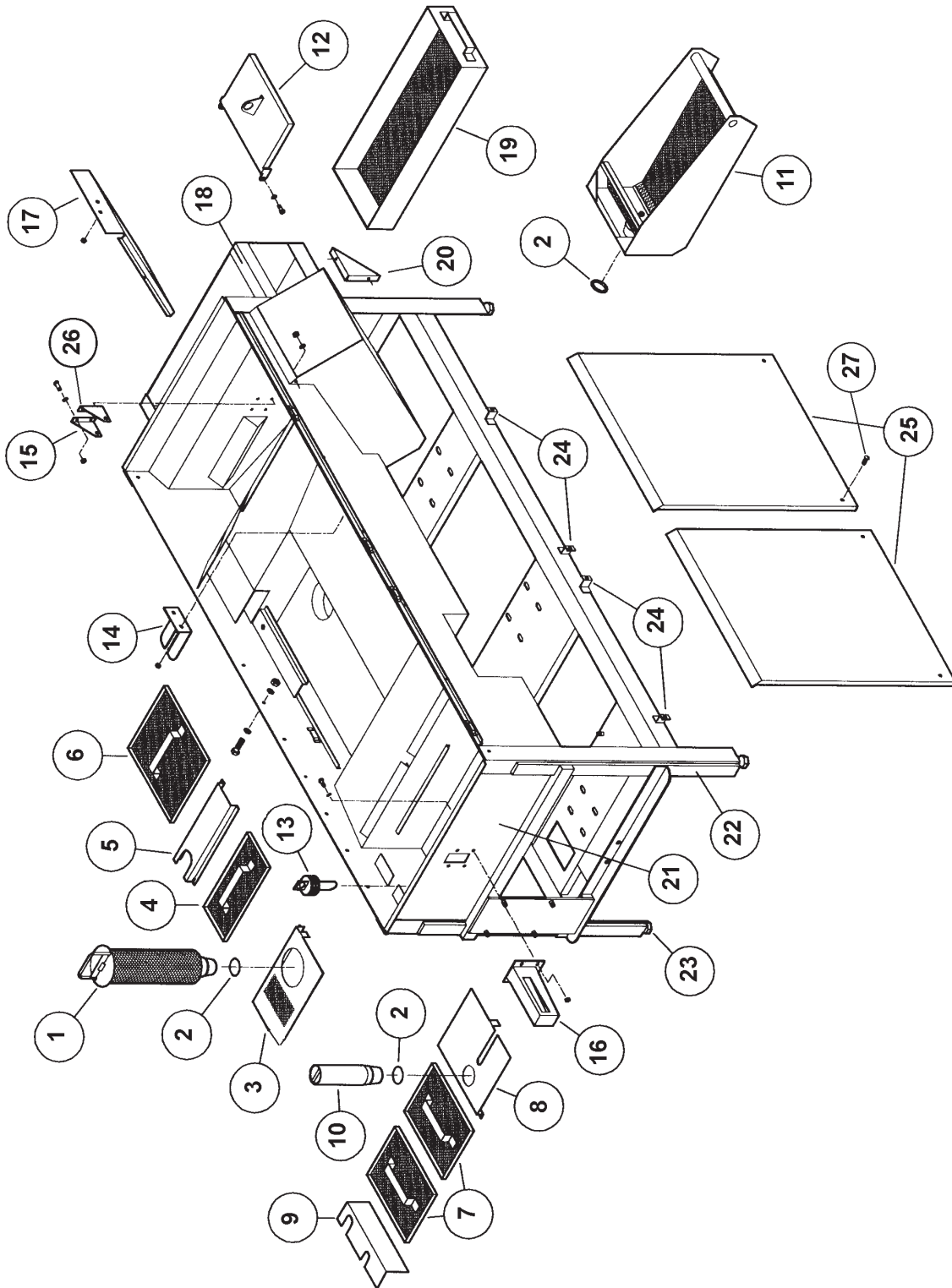
| Ref. No. | Part No. | No. Req. | Description |
|----------|----------|----------|--|
| 1 | 281-6211 | 1 | Filter w/O-Ring, Wash Pump |
| 2 | 289-6611 | Rep. | Gasket, O-Ring, Pre-Wash, Wash, and Rinse Taper |
| 3 | 286-6197 | 1 | Plate, Wash Pump Filter, L-R |
| 4 | 285-6122 | 1 | Screen Weldment, Wash, Small (10 3/4" x 5 3/8") |
| 5 | 286-6179 | 1 | Cover, Wash Manifold |
| 6 | 285-6145 | 1 | Screen Weldment, Wash L-R, Large (10 3/4" x 10 3/4") |
| 7 | 285-6123 | 2 | Screen Weldment, Rinse Tank (9 3/4" x 7") |
| 8 | 286-6200 | 1 | Plate, Rinse Stand Tube, L-R |
| 9 | 285-6152 | 1 | Cover Weldment, Rinse Float, L-R |
| 10 | 281-6210 | 1 | Drain Stand Tube w/O-Ring, Rinse Pump |
| 11 | 281-6218 | 1 | Pre-Wash Screen Basket W/O-Ring |
| 12 | 285-6215 | 1 | Cover Weldment, ADC-66, Pre-Wash Screen Basket |
| 13 | 285-6162 | 1 | Filter Screen Weldment, Rinse Pump |
| 14 | 286-6182 | 1 | Guard, Wash Magnet |
| 15 | 285-6216 | 1 | Bushing Mount Weldment, LH, ADC-66, Idler Arm |
| 16 | 285-6119 | 1 | Drip Chute Weldment |
| 17 | 287-6161 | 1 | Baffle, Pre-Wash Tank |
| 18 | 289-9125 | 1 | Scrap Trap, L-R (Box Only) |
| 19 | 289-9109 | 1 | Tray, Scrap Trap, Complete |
| 20 | 289-9114 | 1 | Support, Scrap Trap |
| 21 | 285-6202 | 1 | Pan Weldment, ADC-66, L-R |
| 22 | 285-6227 | 1 | Frame Weldment, ADC-66, L-R |
| 23 | 099-1024 | 4 | Bullet Feet, SS |
| 24 | 285-6151 | 4 | Front Panel Mount Weldment, Lower |
| 25 | 285-6201 | 2 | Panel Weldment, Front |
| 26 | 285-6217 | 1 | Bushing Mount Weldment, RH, ADC-66, Idler Arm |
| 27 | 098-1414 | 4 | Bolt, 1/4-20 x 1/2", TH, SS |
| N/S | 285-6221 | 1 | Cover, ADC-66, L-R, Pre-Wash Transfer Chute |
| N/S | 289-9127 | Rep. | Scrap Accumulator, L-R, Complete, ADC-66 |
| N/S | 288-1076 | Tool | Kit, Pallet Removal |
| N/S | 288-1065 | Opt. | Plug, Probe & Injection Hole |
| | | | |
| | | | |
| | | | |
| | | | |



261-0300
Cabinet Assembly
ADC-66 L-R

American Dish Service

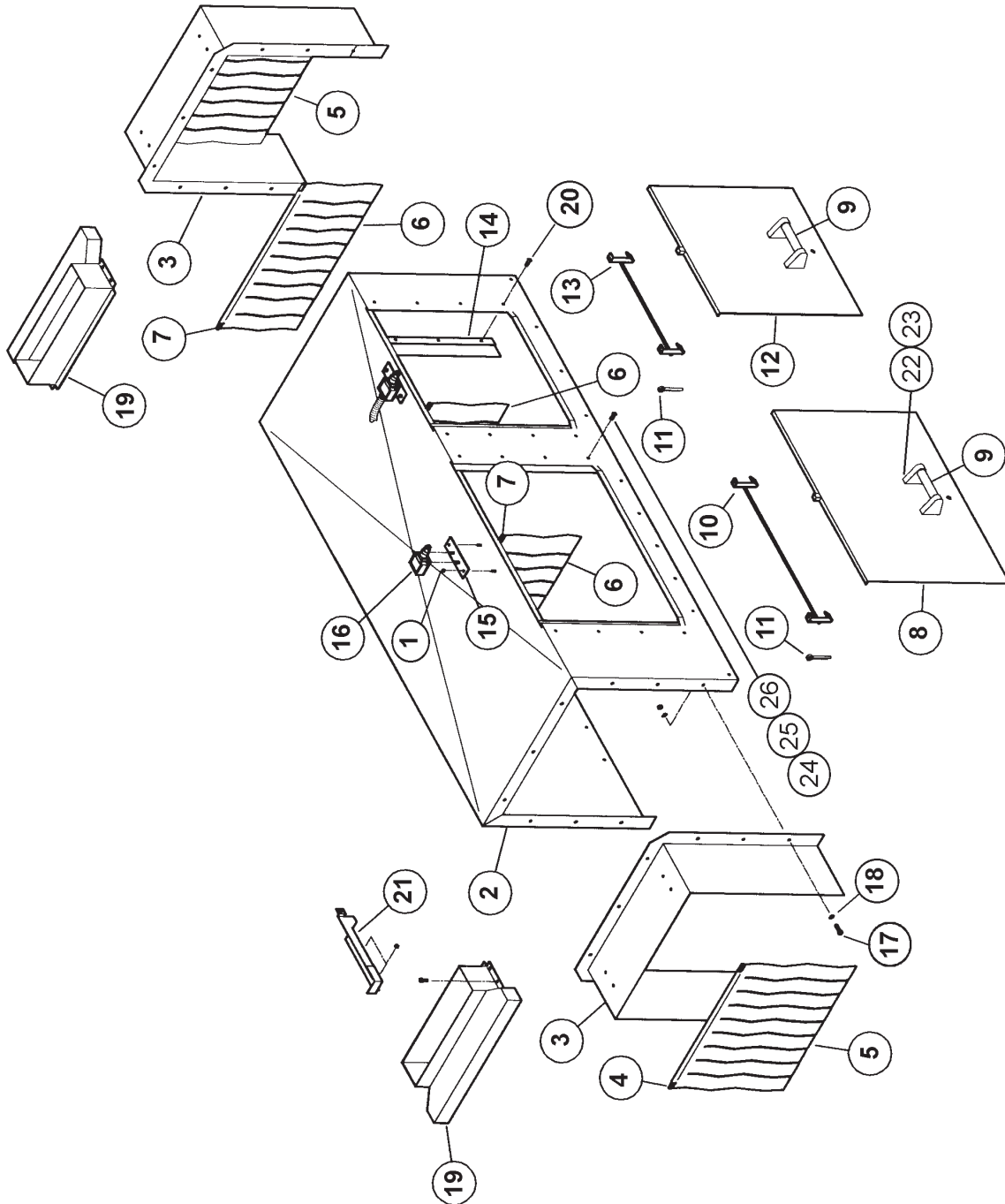
| Ref. No. | Part No. | No. Req. | Description |
|----------|----------|----------|--|
| 1 | 098-2507 | 46 | Locknut, 1/4-20, SS |
| 2 | 285-6199 | 1 | Hood Weldment, L-R |
| 3 | 285-6115 | 2 | Hood End Shield Weldment |
| 4 | 284-6122 | 2 | Curtain Rod, 5/16" x 20.5", SS |
| 5 | 299-1001 | 2 | Curtain, 21" Wide x 17" Tall (End Curtains) |
| 6 | 299-1002 | 3 | Curtain, 23" Wide x 11" Tall |
| 7 | 284-6121 | 3 | Curtain Rod, 5/16" x 24", SS |
| 8 | 285-6124 | 1 | Door Weldment, Oval, Wash Tank |
| 9 | 285-6139 | 2 | Handle Weldment, Front Access Door |
| 10 | 285-6125 | 1 | Latch Weldment, Door |
| 11 | 098-8008 | 4 | Cotter Pin, 3/32" x 1", SS |
| 12 | 285-6193 | 1 | Pre-Wash Door Weldment |
| 13 | 285-6205 | 1 | Pre-Wash Door Latch Weldment |
| 14 | 287-6123 | 4 | Door Guide, SS |
| 15 | 285-6103 | 2 | Bracket, Door Cut-Off (Holds Switch) |
| 16 | 099-4502 | 2 | Switch, Door Cut-Off |
| 17 | 098-1423 | 26 | Bolt, 1/4-20 x 1/2", HH, SS |
| 18 | 098-2416 | 46 | Washer, 1/4", SS |
| 19 | 285-6116 | 2 | Vent Weldment, Hood End Shield (4" Tall) |
| 20 | 098-1414 | 16 | Bolt, 1/4-20 x 1/2", TH, SS |
| 21 | 285-6147 | 1 | Duct Weldment, Inlet Water, L-R |
| 22 | 098-1414 | 4 | Screw, 1/4-20 x 1/2", TH, SS (Per Door Handle) |
| 23 | 098-2416 | 4 | Washer, 1/4" Flat, SS (Per Door Handle) |
| 24 | 098-1414 | 4 | Screw, 1/4-20 x 1/2", TH, SS (Per Door Guide) |
| 25 | 098-2507 | 4 | Locknut, 1/4-20, SS, W/Nylon insert (Per Door guide) |
| 26 | 098-2416 | 4 | Washer, 1/4" Flat, SS (Per Door Guide) |
| N/S | 287-6157 | 1 | Brace, Pan Rear |
| N/S | 285-6258 | Opt. | Vent Weldment 8" |
| N/S | 285-6244 | Opt. | Vent Extension (Fits 4" x 16" Vents – 16" OA) |
| N/S | 288-1068 | 2 | Kit, Front Door safety Latch |
| N/S | 286-6276 | Rep. | Catch, Door safety (Catch Only) |
| | | | |
| | | | |
| | | | |
| | | | |



261-0400
Cabinet Assembly
ADC-66 R-L

American Dish Service

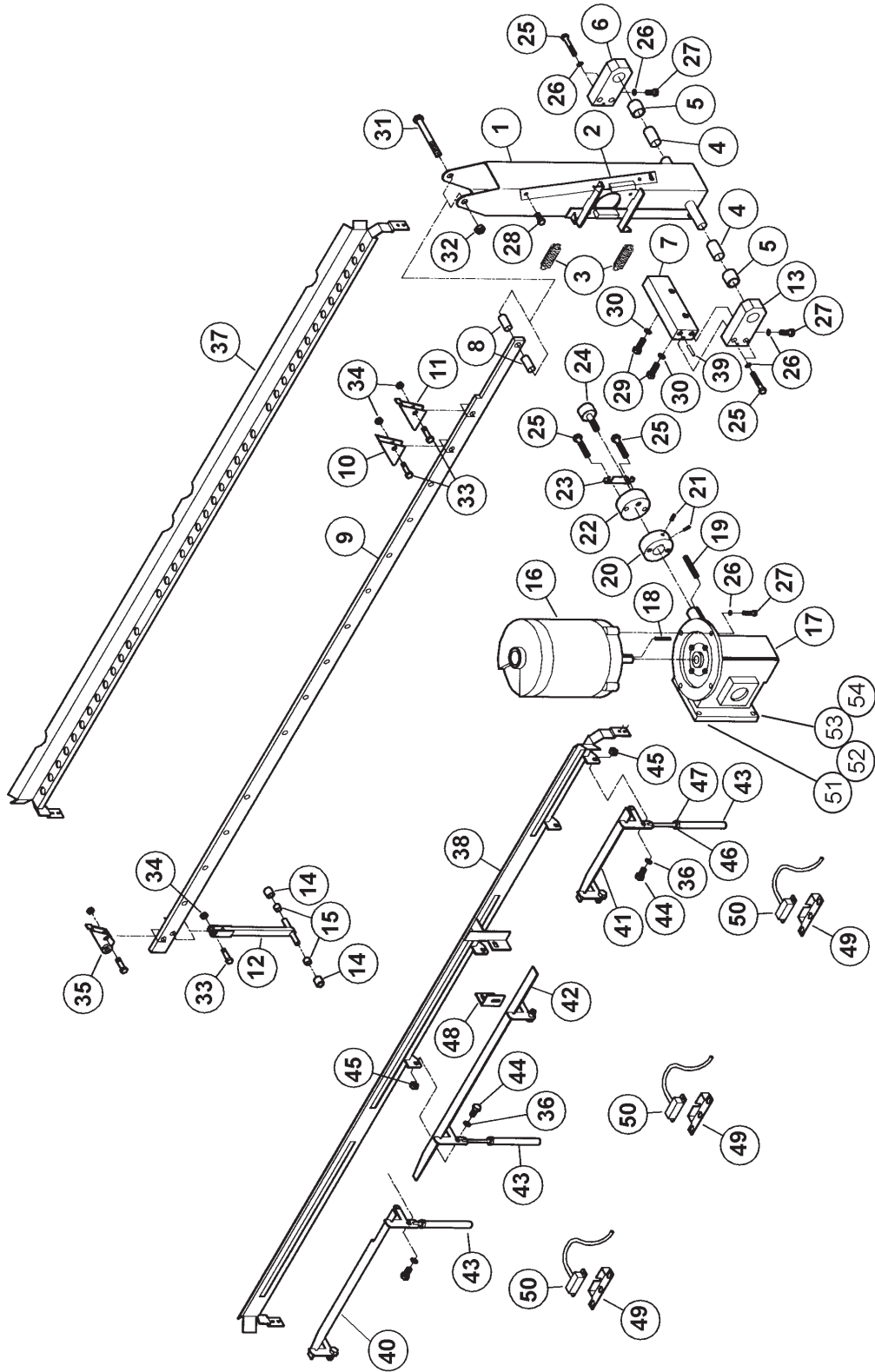
| Ref. No. | Part No. | No. Req. | Description |
|----------|----------|----------|---|
| 1 | 281-6211 | 1 | Filter w/O-Ring, Wash Pump |
| 2 | 289-6611 | Rep. | Gasket, O-Ring, Pre-Wash, Wash, and Rinse Taper |
| 3 | 286-6174 | 1 | Plate, Wash Pump Filter, R-L |
| 4 | 285-6122 | 1 | Screen Weldment, Wash, Small (10 3/4" x 5 3/8") |
| 5 | 286-6179 | 1 | Cover, Wash Manifold |
| 6 | 285-6121 | 1 | Screen Weldment, Wash R-L, Large (10 3/4" x 8 3/8") |
| 7 | 285-6123 | 2 | Screen Weldment, Rinse Tank (9 3/4" x 7") |
| 8 | 286-6176 | 1 | Plate, Rinse Stand Tube, R-L |
| 9 | 285-6126 | 1 | Cover Weldment, Rinse Float, R-L |
| 10 | 281-6210 | 1 | Drain Stand Tube w/O-Ring, Rinse Pump |
| 11 | 281-6218 | 1 | Pre-Wash Screen Basket W/O-Ring |
| 12 | 285-6215 | 1 | Cover Weldment, ADC-66, Pre-Wash Screen Basket |
| 13 | 285-6162 | 1 | Filter Screen Weldment, Rinse Pump |
| 14 | 286-6182 | 1 | Guard, Wash Magnet |
| 15 | 285-6217 | 1 | Bushing Mount Weldment, RH, ADC-66, Idler Arm |
| 16 | 285-6119 | 1 | Drip Chute Weldment |
| 17 | 287-6161 | 1 | Baffle, Pre-Wash Tank |
| 18 | 289-9126 | 1 | Scrap Trap, R-L (Box Only) |
| 19 | 289-9109 | 1 | Tray, Scrap Trap, Complete |
| 20 | 289-9114 | 1 | Support, Scrap Trap |
| 21 | 285-6203 | 1 | Pan Weldment, ADC-66, R-L |
| 22 | 285-6228 | 1 | Frame Weldment, ADC-66, R-L |
| 23 | 099-1024 | 4 | Bullet Feet, SS |
| 24 | 285-6151 | 4 | Front Panel Mount Weldment, Lower |
| 25 | 285-6201 | 2 | Panel Weldment, Front |
| 26 | 285-6216 | 1 | Bushing Mount Weldment, LH, ADC-66, Idler Arm |
| 27 | 098-1414 | 4 | Bolt, 1/4-20 x 1/2", TH, SS |
| N/S | 285-6220 | 1 | Cover, ADC-66, R-L, Pre-Wash Transfer Chute |
| N/S | 289-9128 | Rep. | Scrap Accumulator, R-L, Complete, ADC-66 |
| N/S | 288-1076 | Tool | Kit, Pallet Removal |
| N/S | 288-1065 | Opt. | Plug, Probe & Injection Hole |
| | | | |
| | | | |
| | | | |
| | | | |
| | | | |



261-0400
Cabinet Assembly
ADC-66 R-L

American Dish Service

| Ref. No. | Part No. | No. Req. | Description |
|----------|--------------------------|----------|--|
| 1 | 098-2507 | 46 | Locknut, ¼-20, SS |
| 2 | 285-6200 | 1 | Hood Weldment, R-L |
| 3 | 285-6115 | 2 | Hood End Shield Weldment |
| 4 | 284-6122 | 2 | Curtain Rod, 5/16" x 20.5", SS |
| 5 | 299-1001 | 2 | Curtain, 21" Wide x 17" Tall (End Curtains) |
| 6 | 299-1002 | 3 | Curtain, 23" Wide x 11" Tall |
| 7 | 284-6121 | 3 | Curtain Rod, 5/16" x 24", SS |
| 8 | 285-6124 | 1 | Door Weldment, Oval, Wash Tank |
| 9 | 285-6139 | 2 | Handle Weldment, Front Access Door |
| 10 | 285-6125 | 1 | Latch Weldment, Door |
| 11 | 098-8008 | 4 | Cotter Pin, 3/32" x 1", SS |
| 12 | 285-6193 | 1 | Pre-Wash Door Weldment |
| 13 | 285-6205 | 1 | Pre-Wash Door Latch Weldment |
| 14 | 287-6123 | 4 | Door Guide, SS |
| 15 | 285-6103 | 2 | Bracket, Door Cut-Off (Holds Switch) |
| 16 | 099-4502 | 2 | Switch, Door Cut-Off |
| 17 | 098-1423 | 26 | Bolt, ¼-20 x ½", HH, SS |
| 18 | 098-2416 | 46 | Washer, ¼", SS |
| 19 | 285-6116 | 2 | Vent Weldment, Hood End Shield (4" Tall) |
| 20 | 098-1414 | 16 | Bolt, ¼-20 x ½", TH, SS |
| 21 | 285-6127 | 1 | Duct Weldment, Inlet Water, R-L |
| 22 | 098-1414 | 4 | Screw, ¼-20 x ½", TH, SS (Per Door Handle) |
| 23 | 098-2416 | 4 | Washer, ¼" Flat, SS (Per Door Handle) |
| 24 | 098-1414 | 4 | Screw, ¼-20 x ½", TH, SS (Per Door Guide) |
| 25 | 098-2507 | 4 | Locknut, ¼-20, SS, W/Nylon insert (Per Door guide) |
| 26 | 098-2416 | 4 | Washer, ¼" Flat, SS (Per Door Guide) |
| N/S | 287-6157 | 1 | Brace, Pan Rear |
| N/S | 285-6258 | Opt. | Vent Weldment 8" |
| N/S | 285-6244 | Opt. | Vent Extension (Fits 4" x 16" Vents – 16" OA) |
| N/S | 288-1068 | 2 | Kit, Front Door safety Latch |
| N/S | 286-6276 | Rep. | Catch, Door safety (Catch Only) |
| | | | |
| | | | |
| | | | |
| | | | |
| | | | |

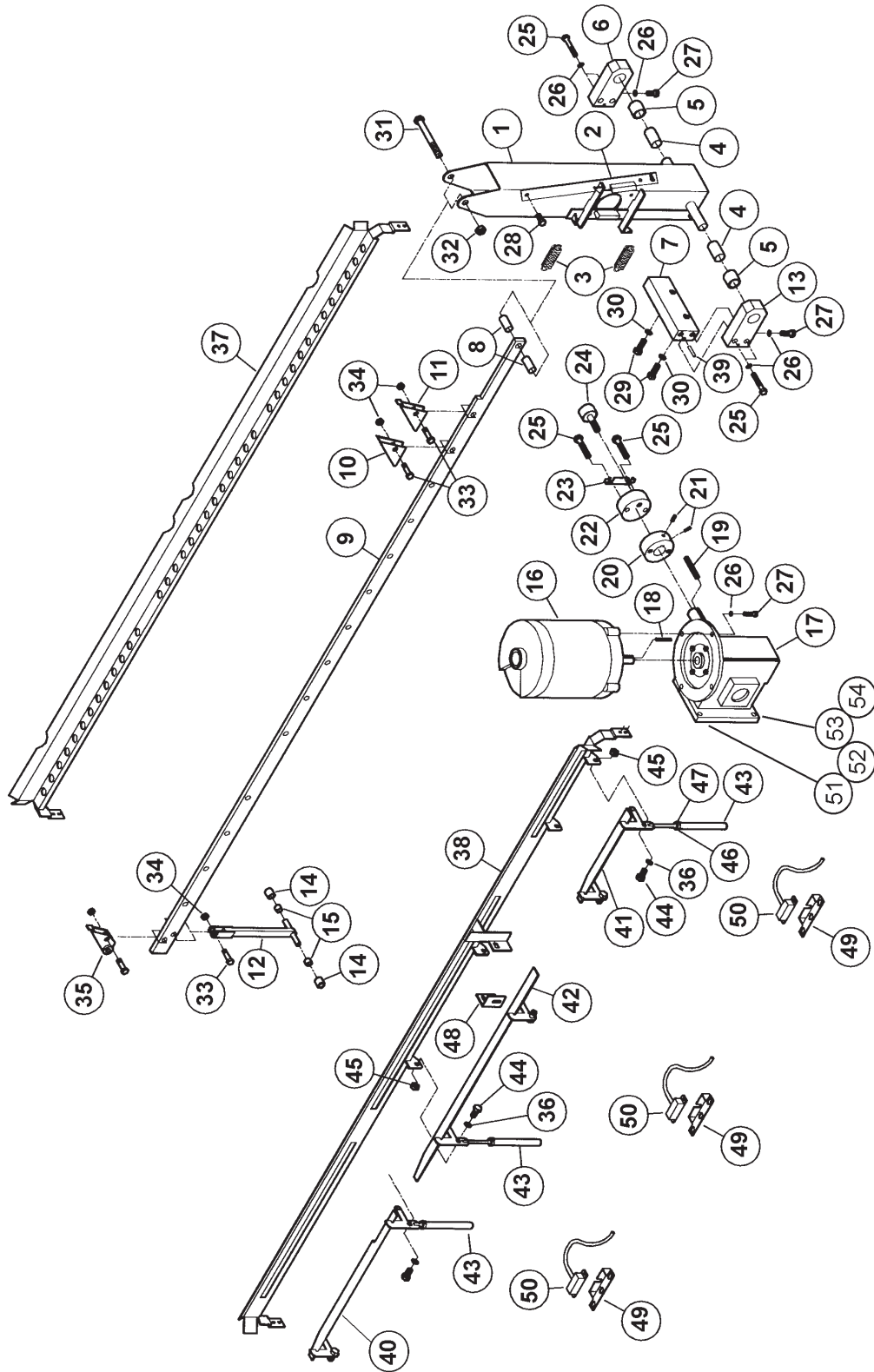


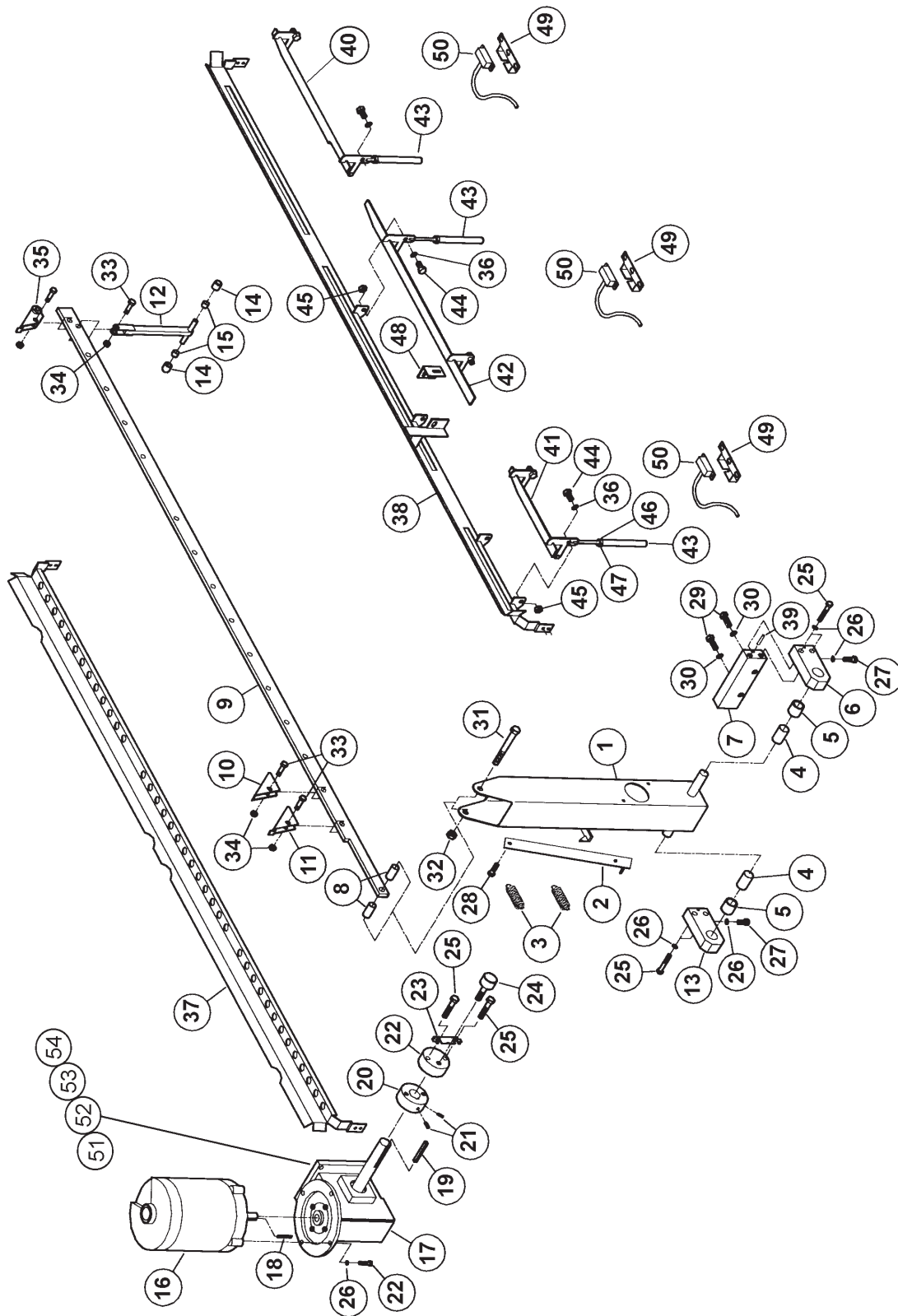
268-1000

Conveyor Drive & Tray Track
Control, ADC-66 L-R

American Dish Service

| Ref. No. | Part No. | No. Req. | Description |
|----------|--------------------------|----------|---|
| 1 | 285-6133 | 1 | Rocker Arm Weldment |
| 2 | 285-6134 | 2 | Slip Clutch Bar Weldment (Rubbing Block) |
| 3 | 298-3001 | 2 | Spring, Slip Clutch |
| 4 | 284-6142 | 2 | Spacer, Rocker Arm |
| 5 | 298-4001 | 2 | Bushing, 1" OD x 3/4" ID x 7/8" Lg |
| 6 | 284-6141 | 1 | Block, Pillow Bushing, RH |
| 7 | 284-6139 | 1 | Block, Base, Pillow Bushing |
| 8 | 284-6149 | 2 | Spacer, Conveyor Connecting Bolt |
| 9 | 284-6202 | 1 | Bar, Conveyor, ADC-66 (Approx. 68 1/2" Long) |
| 10 | 285-6136 | 10 | Dog Weldment, Conveyor |
| 11 | 285-6137 | 4 | Exit Dog Weldment, Conveyor |
| 12 | 285-6135 | 1 | Idler Arm Weldment |
| 13 | 284-6140 | 1 | Block, Pillow Bushing, LH |
| 14 | 298-4002 | 2 | Bushing, Idler Arm, 5/8" OD x 3/8" ID x 5/8" Lg |
| 15 | 284-6143 | 2 | Spacer, Idler Arm, 5/8" OD x 3/8" ID x 3/8" Lg |
| 16 | 291-1003 | 1 | Motor, 1/3 HP, 3 Ph |
| 17 | 291-1004 | 1 | Gear Reducer (53:1) |
| 18 | 284-6201 | 1 | Key, Conveyor Drive Motor |
| 19 | 284-6137 | 1 | Key, Cam Block (For Cam block A) |
| 20 | 284-6134 | 1 | Cam Block (A), Gear Box Side |
| 21 | 098-1441 | 2 | Set Screw, 1/4-20 x 1/2" Lg (For Cam Block A) |
| 22 | 284-6135 | 1 | Cam Block (B), Cam Follower Side |
| 23 | 286-6189 | 1 | Bolt, Lock, Cam Follower |
| 24 | 281-6201 | 1 | Bearing, Cam Follower |
| 25 | 098-1611 | 6 | Bolt, 3/8-16 x 2", HH, SS |
| 26 | 098-2710 | 10 | Lockwasher, 3/8", SS |
| 27 | 098-1614 | 6 | Bolt, 3/8" x 1", HH, SS |
| 28 | 098-1506 | 2 | Bolt, 5/16-18 x 3/4", HH, SS |
| 29 | 098-1802 | 2 | Bolt, 1/2-13 x 1 1/4", HH, SS |
| 30 | 098-2802 | 2 | Lockwasher, 1/2", SS |
| 31 | 098-1801 | 1 | Bolt, 1/2-13 x 4", HH, SS |
| 32 | 098-2801 | 1 | Locknut, 1/2-13, SS |
| 33 | 098-1612 | 17 | Bolt, 3/8-16 x 1 1/8" w/ 3/4" Shoulder, HH, SS |
| 34 | 098-2708 | 17 | Locknut, 3/8-16, SS |
| 35 | 285-6212 | 1 | Dog Weldment, ADC-66 |
| 36 | 098-2416 | 18 | Washer, 1/4", SS |



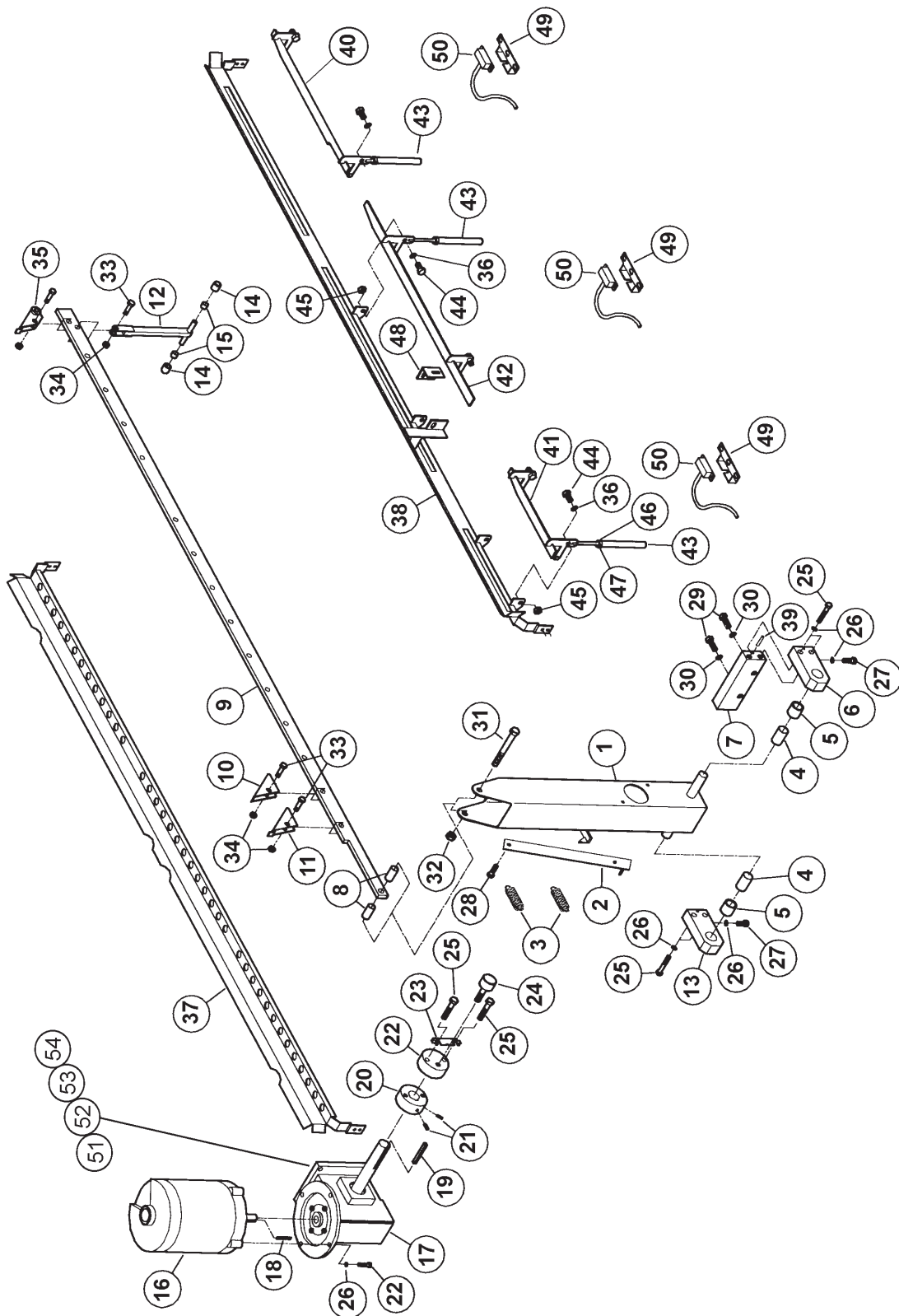


268-1100

Conveyor Drive & Tray Track
Control, ADC-66 R-L

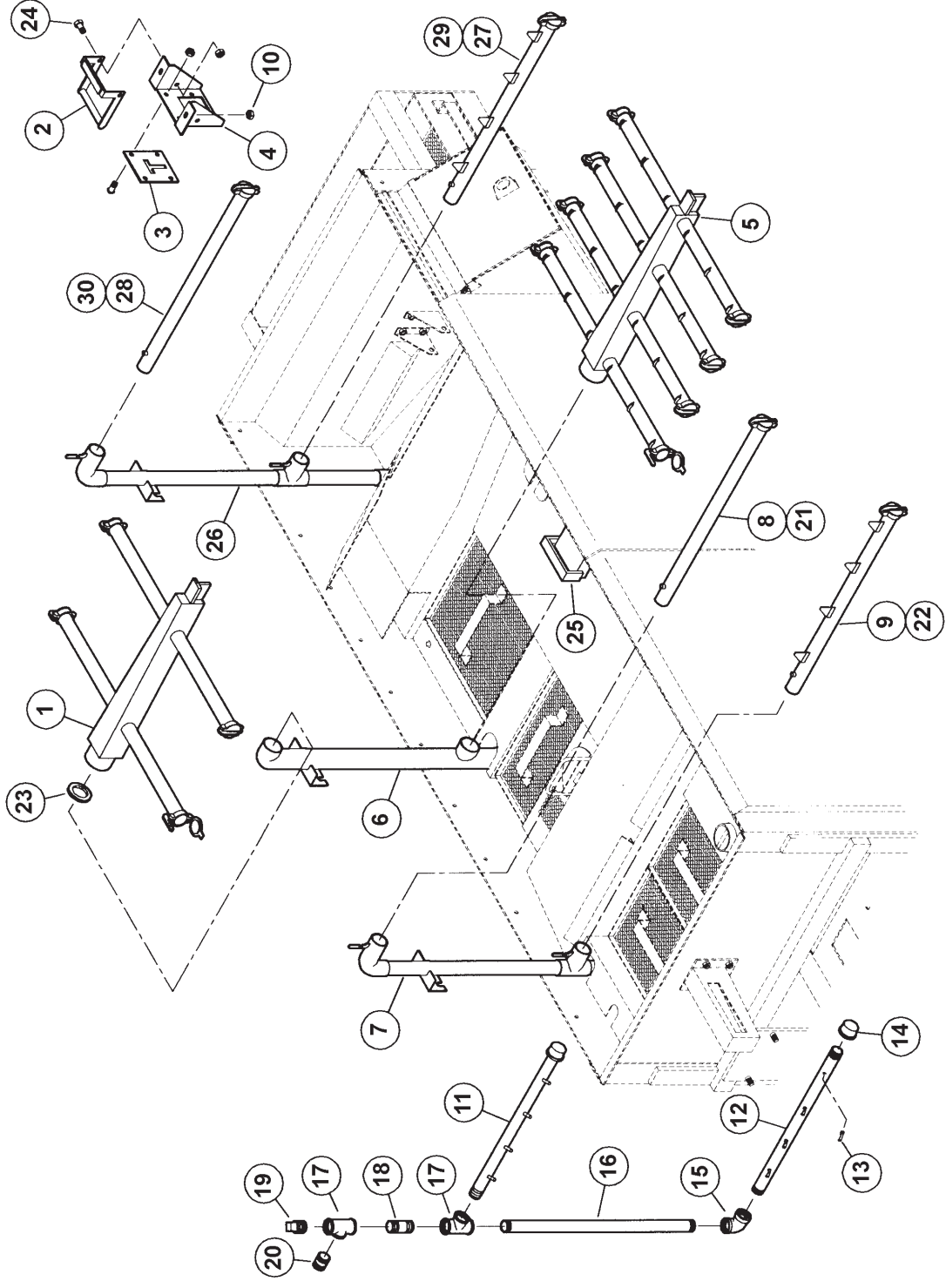
American Dish Service

| Ref. No. | Part No. | No. Req. | Description |
|----------|----------|----------|---|
| 1 | 285-6133 | 1 | Rocker Arm Weldment |
| 2 | 285-6134 | 2 | Slip Clutch Bar Weldment (Rubbing Block) |
| 3 | 298-3001 | 2 | Spring, Slip Clutch |
| 4 | 284-6142 | 2 | Spacer, Rocker Arm |
| 5 | 298-4001 | 2 | Bushing, 1" OD x 3/4" ID x 7/8" Lg |
| 6 | 284-6141 | 1 | Block, Pillow Bushing, RH |
| 7 | 284-6139 | 1 | Block, Base, Pillow Bushing |
| 8 | 284-6149 | 2 | Spacer, Conveyor Connecting Bolt |
| 9 | 284-6202 | 1 | Bar, Conveyor, ADC-66 (Approx. 68 1/2" Long) |
| 10 | 285-6136 | 10 | Dog Weldment, Conveyor |
| 11 | 285-6137 | 4 | Exit Dog Weldment, Conveyor |
| 12 | 285-6135 | 1 | Idler Arm Weldment |
| 13 | 284-6140 | 1 | Block, Pillow Bushing, LH |
| 14 | 298-4002 | 2 | Bushing, Idler Arm, 5/8" OD x 3/8" ID x 5/8" Lg |
| 15 | 284-6143 | 2 | Spacer, Idler Arm, 5/8" OD x 3/8" ID x 3/8" Lg |
| 16 | 291-1003 | 1 | Motor, 1/3 HP, 3 Ph |
| 17 | 291-1004 | 1 | Gear Reducer (53:1) |
| 18 | 284-6201 | 1 | Key, Conveyor Drive Motor |
| 19 | 284-6137 | 1 | Key, Cam Block (For Cam block A) |
| 20 | 284-6134 | 1 | Cam Block (A), Gear Box Side |
| 21 | 098-1441 | 2 | Set Screw, 1/4-20 x 1/2" Lg (For Cam Block A) |
| 22 | 284-6135 | 1 | Cam Block (B), Cam Follower Side |
| 23 | 286-6189 | 1 | Bolt, Lock, Cam Follower |
| 24 | 281-6201 | 1 | Bearing, Cam Follower |
| 25 | 098-1611 | 6 | Bolt, 3/8-16 x 2", HH, SS |
| 26 | 098-2710 | 10 | Lockwasher, 3/8", SS |
| 27 | 098-1614 | 6 | Bolt, 3/8" x 1", HH, SS |
| 28 | 098-1506 | 2 | Bolt, 5/16-18 x 3/4", HH, SS |
| 29 | 098-1802 | 2 | Bolt, 1/2-13 x 1 1/4", HH, SS |
| 30 | 098-2802 | 2 | Lockwasher, 1/2", SS |
| 31 | 098-1801 | 1 | Bolt, 1/2-13 x 4", HH, SS |
| 32 | 098-2801 | 1 | Locknut, 1/2-13, SS |
| 33 | 098-1612 | 17 | Bolt, 3/8-16 x 1 1/8" w/ 3/4" Shoulder, HH, SS |
| 34 | 098-2708 | 17 | Locknut, 3/8-16, SS |
| 35 | 285-6212 | 1 | Dog Weldment, ADC-66 |
| 36 | 098-2416 | 18 | Washer, 1/4", SS |



265-0900 L-R Spray System
Assembly
265-1000 R-L Spray System
Assembly(Shown)
ADC-66

American Dish Service



265-0900 L-R Spray System

Assembly

265-1000 R-L Spray System

Assembly(Shown)

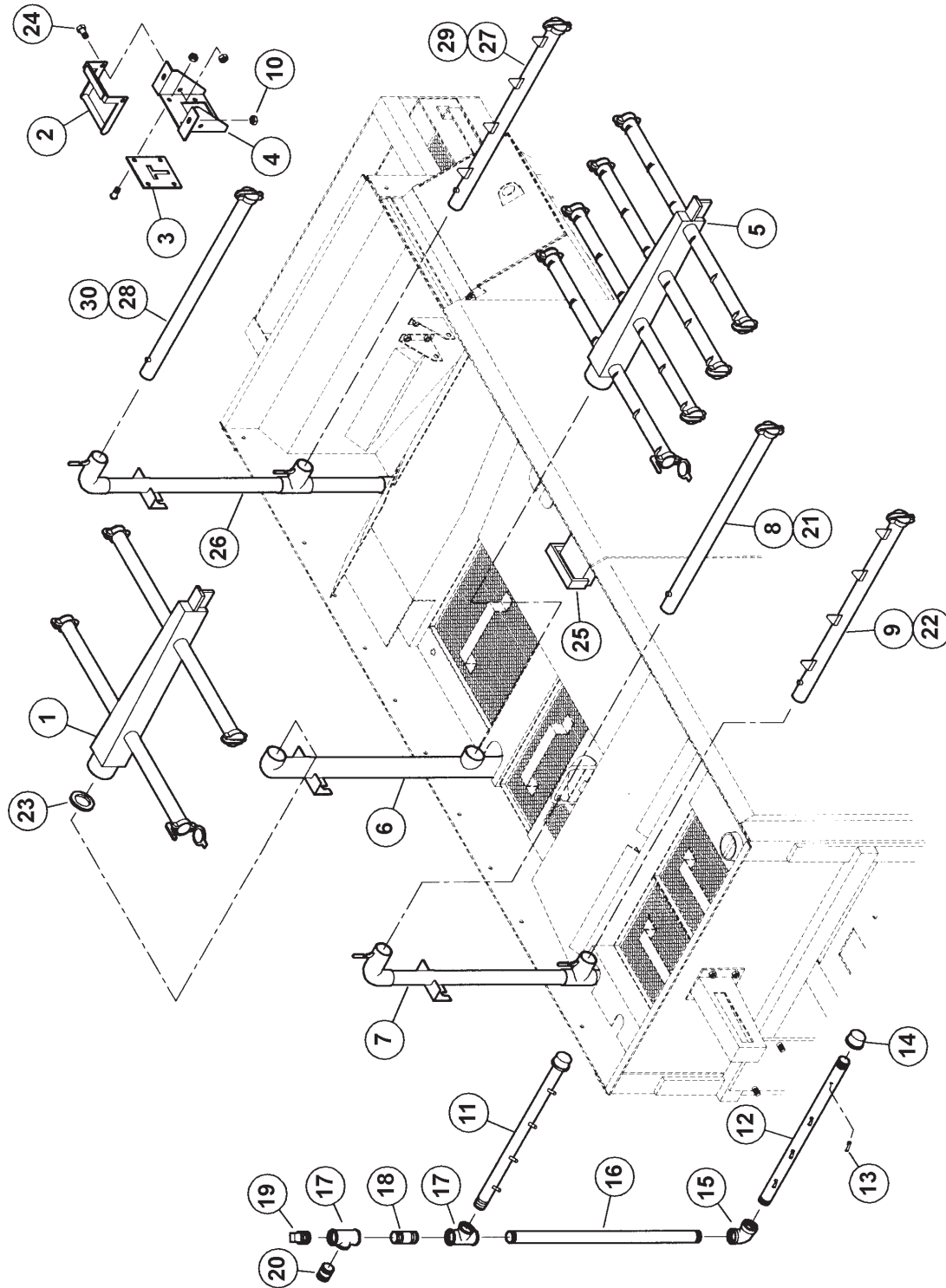
ADC-66

American Dish Service

| Ref. No. | Part No. | No. Req. | Description |
|----------|--------------------------|----------|--|
| 1 | 285-6159 | 1 | Upper Wash Arm Weldment Assembly (Needs 289-6608) |
| 2 | 285-6129 | 1 | Handle Weldment, Upper Wash Arm Mount |
| 3 | 285-6128 | 1 | Tee Plate Weldment, Upper Wash Arm |
| 4 | 286-6177 | 1 | Bracket, Upper Wash Arm Mount |
| 5 | 285-6156 | 1 | Lower Wash Arm Weldment Assembly (Needs 289-6608) |
| 6 | 285-6155 | 1 | Manifold Weldment, Inside Wash |
| 7 | 285-6166 | 1 | Manifold Weldment, Inside Pumped Rinse |
| 8 | 285-6168 | 1 | Spray Arm Weldment, Pumped Rinse, Upper, L-R |
| 9 | 285-6167 | 1 | Spray Arm Weldment, Pumped Rinse, Lower, L-R |
| 10 | 098-2507 | 8 | Locknut, ¼-20, SS |
| N/S | 285-6158 | 16 | Spray Arm Endcap Weldment (Welded to the Arm) |
| 11A | 281-6208 | 1 | Spray Arm, Final Rinse, Upper, L-R, SS Jets |
| 11B | 281-6206 | | Spray Arm, Final Rinse, Upper, L-R, Poly Jets |
| 11C | 281-6204 | | Spray Arm, Final Rinse, Upper, R-L, SS Jets |
| 11D | 281-6202 | | Spray Arm, Final Rinse, Upper, R-L, Poly Jets |
| 12A | 281-6209 | 1 | Spray Arm, Final Rinse, Lower, L-R, SS Jets |
| 12B | 281-6207 | | Spray Arm, Final Rinse, Lower, L-R, Poly Jets |
| 12C | 281-6205 | | Spray Arm, Final Rinse, Lower, R-L, SS Jets |
| 12D | 281-6203 | | Spray Arm, Final Rinse, Lower, R-L, Poly Jets |
| 13A | 284-6146 | 8 | Jets, Final Rinse Spray Arm, SS |
| 13B | 284-6145 | | Jets, Final Rinse Spray Arm, Poly |
| 14 | 292-1011 | 2 | Cap, ½" FPT, SS |
| 15 | 292-1003 | 1 | Fitting, ½" FPT 90° Elbow, SS |
| 16 | 292-3009 | 1 | Nipple, ½" x 21 ½" Lg, SS |
| 17 | 292-1002 | 2 | Fitting, ½" x ½" x ½" Tee, SS |
| 18 | 292-3010 | 1 | Nipple, ½" x 3", SS |
| 19 | 292-1012 | 1 | Plug, ½" MPT, SS |
| 20 | 292-3001 | 1 | Nipple, ½" x 1 ½" Lg, SS |
| 21 | 285-6170 | | Spray Arm, Pumped Rinse, Upper, R-L |
| 22 | 285-6169 | | Spray Arm, Pumped Rinse, Lower, R-L |
| 23 | 289-6608 | 2 | Gasket, O-Ring, Wash Arm |
| 24 | 098-1423 | 2 | Bolt, ¼-20 x ½", HH, SS |
| 25 | 285-6130 | 1 | Handle Weldment, Wash Arm Mount, Lower |
| 26 | 285-6198 | 1 | Manifold Weldment, Pre-Wash |
| 27 | 285-6236 | 1 | Spray Arm Weldment R-L, ADC-66, Lower Pre-Wash |
| 28 | 285-6237 | 1 | Spray Arm Weldment R-L, ADC-66, Upper Pre-Wash |

265-0900 L-R Spray System
Assembly
265-1000 R-L Spray System
Assembly(Shown)
ADC-66

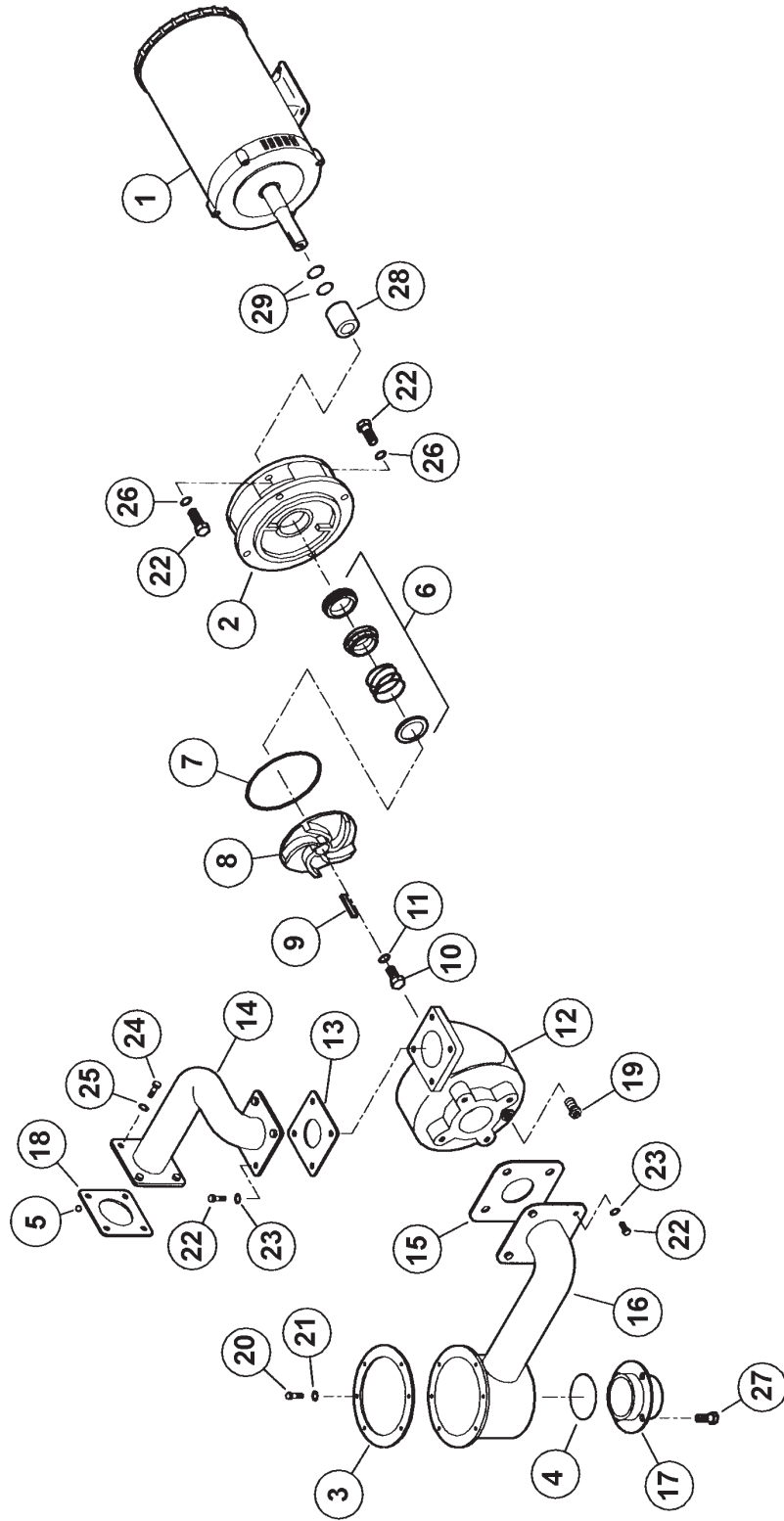
American Dish Service



263-0100

Wash Pump Assembly
ADC-66 L-R/R-L

American Dish Service

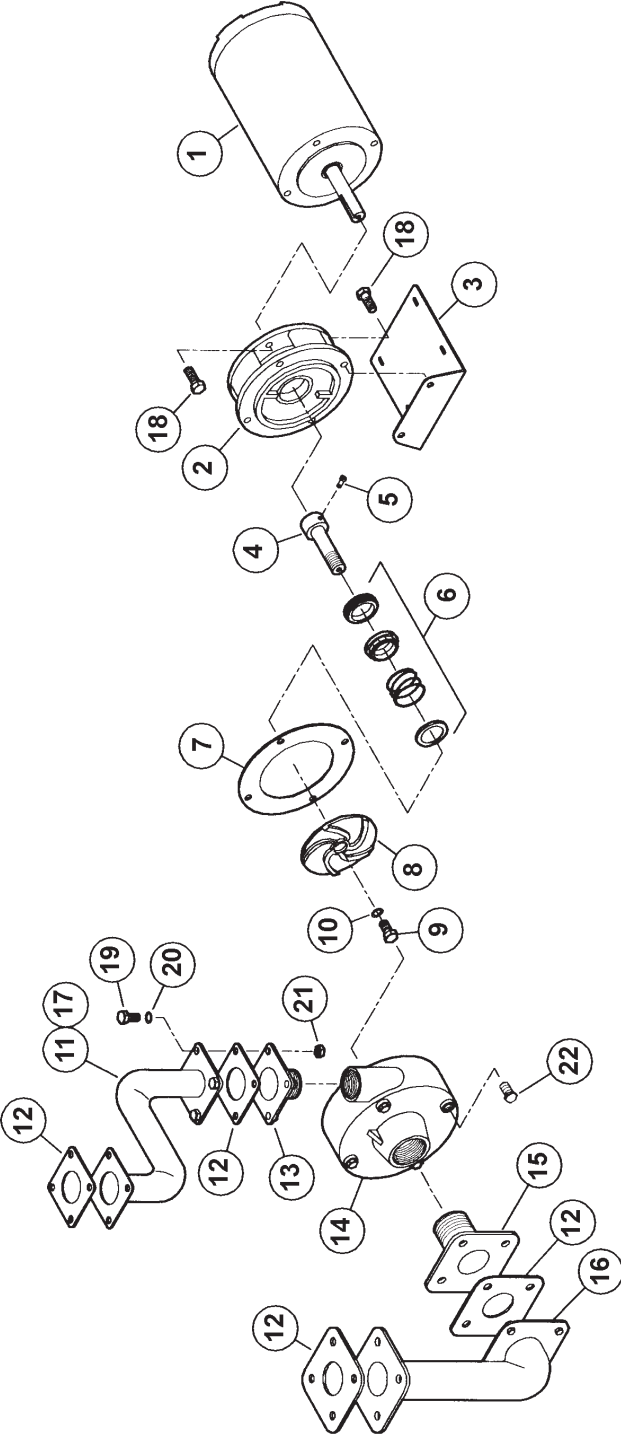


263-0100

Wash Pump Assembly
ADC-66 L-R/R-L

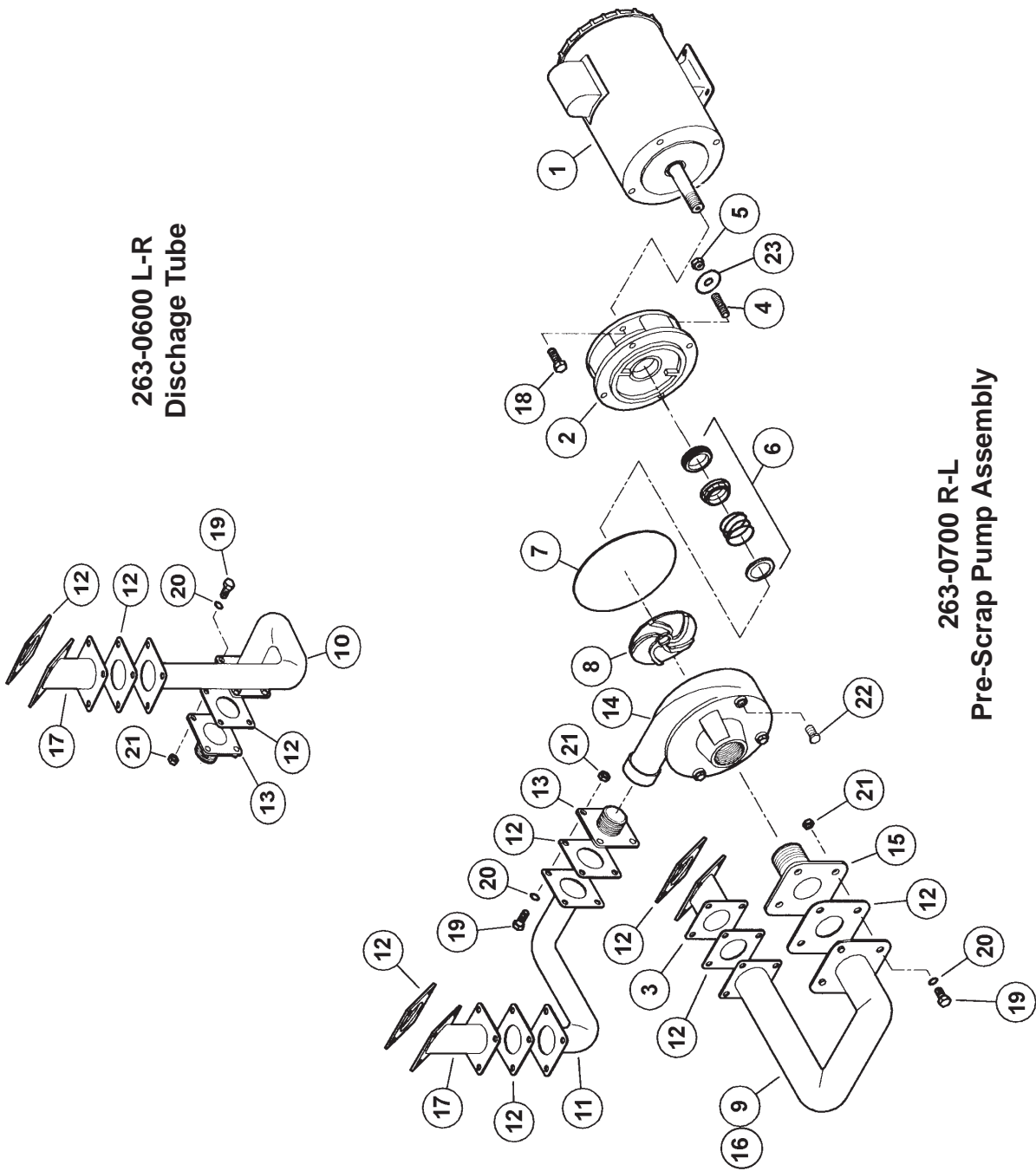
American Dish Service

| Ref. No. | Part No. | No. Req. | Description |
|----------|--------------------------|----------|--|
| 1 | 291-1002 | 1 | Motor, 3 HP, 3 Phase, W/Sleeve |
| 2 | 282-6301 | 1 | Rear Housing, Wash Pump |
| 3 | 289-6621 | 1 | Gasket, Sump, Teflon |
| 4 | 289-6606 | 1 | Gasket, O-Ring, Drain Socket Flange |
| 5 | 098-2510 | 4 | Washer, SS/Rubber |
| 6 | 292-2001 | 1 | Seal, Wash Pump |
| 7 | 289-6603 | 1 | Gasket, Wash Pump, O-Ring |
| 8 | 282-6303 | 1 | Impeller, Wash Pump |
| 9 | 284-6151 | 1 | Key, Wash Pump, Impeller |
| 10 | 098-1613 | 1 | Bolt, 3/8-16 x 1" Lg, HH, SS, w/Lock Strip |
| 11 | 098-2711 | 1 | Washer, 3/8" ID x 1" OD x .103" Thick, SS |
| 12 | 282-6302 | 1 | Cover, Wash Pump |
| 13 | 289-6604 | 1 | Gasket, Wash Pump, Discharge Flange |
| 14 | 285-6153 | 1 | Discharge Tube Weldment, Wash Pump |
| 15 | 289-6605 | 1 | Gasket, Wash Pump Intake Flange |
| 16 | 285-6154 | 1 | Intake Tube, Sump Weldment, Wash Pump |
| 17 | 285-6157 | 1 | Drain Socket Weldment, Wash |
| 18 | 289-6622 | 2 | Gasket, Wash Tank Flange, Teflon |
| 19 | 092-1158 | 1 | Plug, 1/4" MPT |
| 20 | 098-1423 | 6 | Bolt, 1/4-20 x 1/2", HH, SS |
| 21 | 098-2416 | 6 | Washer, 1/4", SS |
| 22 | 098-1614 | 16 | Bolt, 3/8-16 x 1" Lg, HH, SS |
| 23 | 098-2711 | 8 | Washer, 3/8" ID x .103 Thick, SS |
| 24 | 098-1510 | 4 | Bolt, 5/16-18 x 1 1/4", HH, SS |
| 25 | 098-2509 | 8 | Washer, 5/16", SS |
| 26 | 098-2710 | 8 | Lock Washer, 3/8", SS |
| 27 | 098-1502 | 4 | Bolt, 5/16-18 x 1/2", HH, SS |
| 28 | 284-6203 | 1 | Sleeve, Wash Pump Shaft |
| 29 | 289-6618 | 2 | O-Ring, Wash Pump Shaft Sleeve |
| N/S | 288-1048 | Rep. | Pump Assembly, Less Cover, Wash, 3 HP, 3 Phase |
| | | | |
| | | | |
| | | | |
| | | | |
| | | | |
| | | | |
| | | | |



263-0600 L-R Pre-Wash Pump
Assembly
263-0700 R-L Pre-Wash Pump
Assembly
ADC-66

American Dish Service

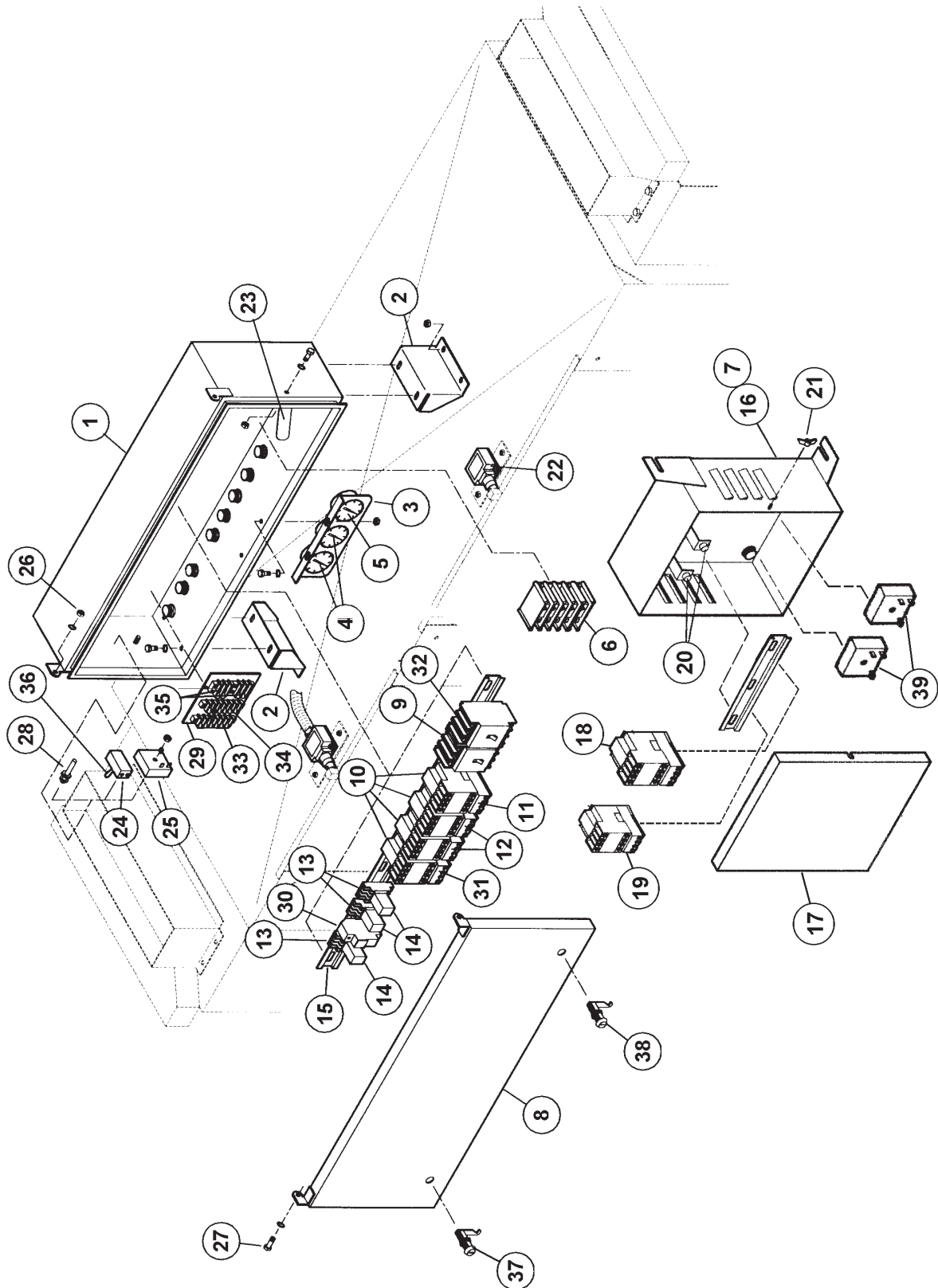


263-0600 L-R
Discharge Tube

263-0700 R-L
Pre-Scrap Pump Assembly

264-0500 L-R
Control System Assembly
264-0600 R-L
Control System Assembly
ADC-66

American Dish Service



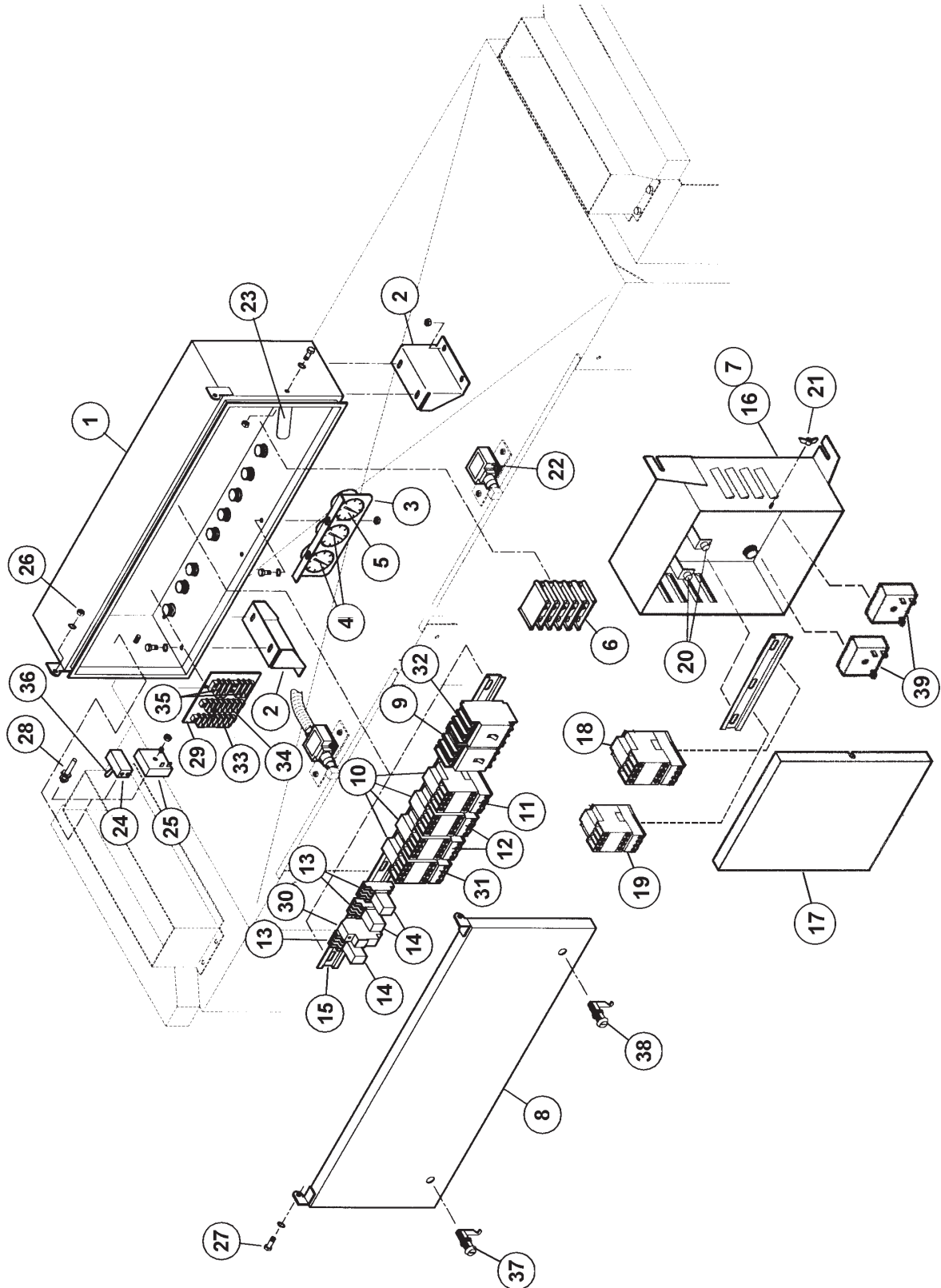
264-0500 L-R
Control System Assembly
264-0600 R-L
Control System Assembly
ADC-66

American Dish Service

| Ref. No. | Part No. | No. Req. | Description |
|----------|--------------------------|----------|---|
| 1 | 285-6231 | 1 | Control Box Weldment |
| 2 | 286-6111 | 2 | Control Box Mounts |
| 3 | 286-6180 | 1 | Bracket, Temperature Gauge |
| 4 | 299-1005 | 2 | Temperature Gauge, Wash and Rinse Tank (6' Capillary) |
| 5 | 299-1004 | 1 | Temperature Gauge, Final Rinse (3' Capillary) |
| 6 | 391-5101 | 1 | Terminal Block |
| 7 | 285-6240 | 1 | Power Box Weldment, R-L |
| 8 | 285-6102 | 1 | Cover Weldment, Control Box |
| 9 | 291-3020 | 1 | Circuit Breaker, 60 Amp, 3 Pole |
| 10 | 291-3001 | 4 | Contactor |
| 11 | 291-3002 | 1 | Overload, 3 HP, 3 Phase |
| 12 | 291-3003 | 2 | Overload, 1/3 HP, 3 Phase |
| 13 | 291-3009 | 4 | Socket, Relay |
| 14 | 291-3005 | 4 | Relay, 110V, DPDT |
| 15 | 291-9107 | 1 | Din Rail, 22" Lg |
| 16 | 285-6239 | 1 | Power Box Weldment, L-R |
| 17 | 287-6104 | 1 | Cover, Power Box |
| 18 | 291-3032 | 1 | Contactor, Wash Heater |
| 19 | 291-3001 | 1 | Contactor, Rinse Heater |
| 20 | 091-7006 | 2 | Light, Heater |
| 21 | 098-2308 | 2 | Wingnut, 1/4-20, SS |
| 22 | 099-4502 | 2 | Switch, Door Cut-Off |
| 23 | 284-6101 | 1 | Bar, Control Box Safety |
| 24 | 091-3008 | 1 | Switch, Master |
| 25 | 291-3008 | 1 | Relay, Time Delay, 6 Second |
| 26 | 098-2507 | 13 | Locknut, 1/4-20, SS |
| 27 | 098-1423 | 2 | Bolt, 1/4-20 x 1/2", HH, SS |
| 28 | 291-7101 | 1 | Light, Indicator |
| 29 | 286-6107 | 1 | Terminal Block Plate |
| 30 | 391-9101 | 1 | Fuse Holder |
| 31 | 291-3023 | 1 | Overload, 1 1/2 HP |
| 32 | 291-3021 | 1 | Circuit Breaker, 20 Amp, 3 Pole |
| 33 | 091-5010 | 1 | Terminal Block, 110V (White Wires) |
| 34 | 291-5106 | 1 | Terminal Block, 110V (White Wires) |
| 35 | 291-5104 | 2 | Terminal Lock, Chemical Dispenser, 2 Pole |
| 36 | 291-9105 | 1 | Boot, Master Switch Cover |

264-0500 L-R
Control System Assembly
264-0600 R-L
Control System Assembly
ADC-66

American Dish Service



264-0500 L-R
Control System Assembly
264-0600 R-L
Control System Assembly
ADC-66

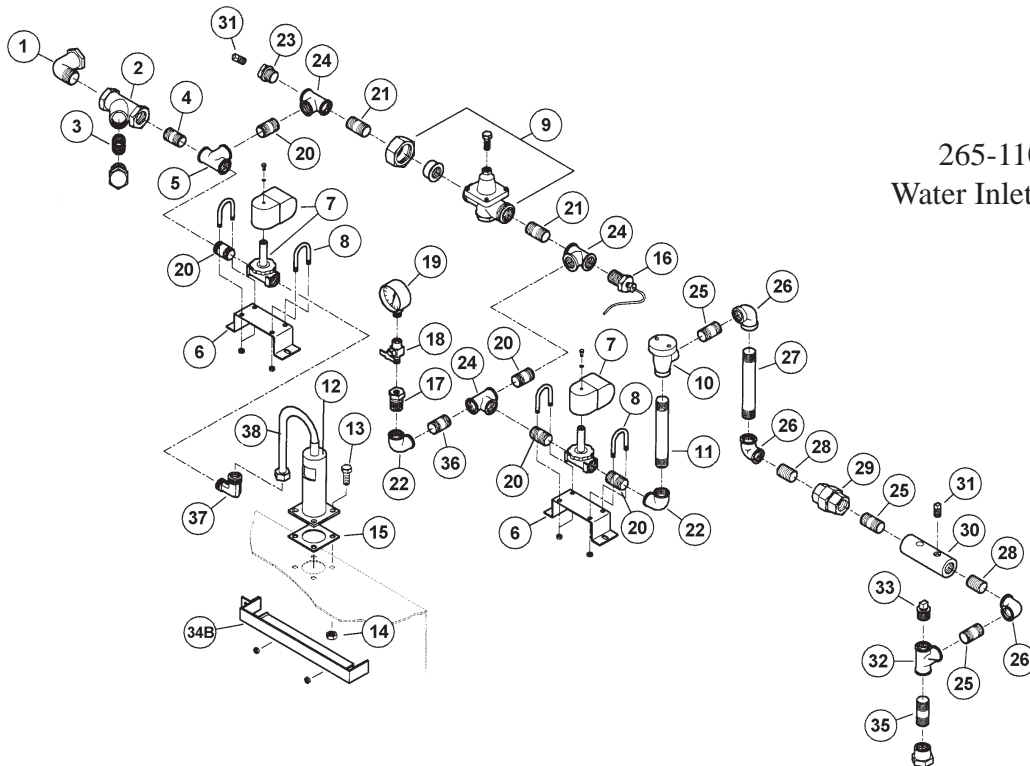
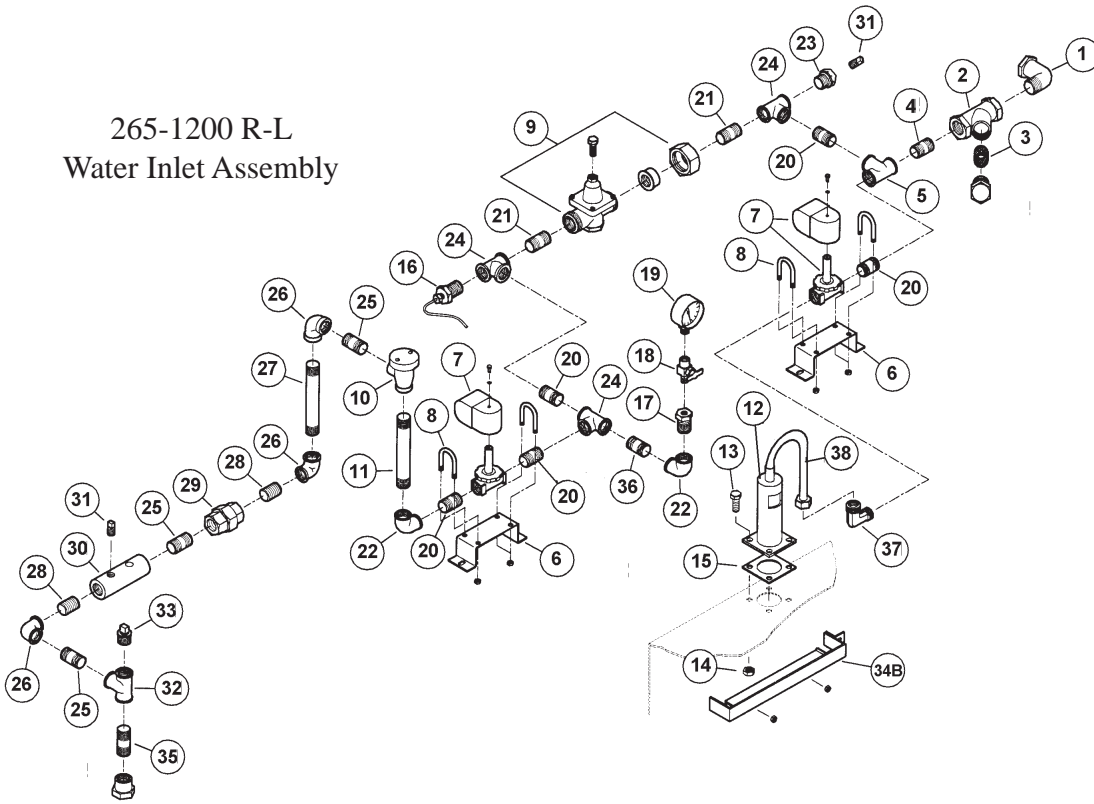
American Dish Service

| Ref. No. | Part No. | No. Req. | Description |
|----------|----------|----------|--|
| 37 | 096-1002 | 1 | Control Box Lock |
| 38 | 096-1008 | 1 | Control Box Dummy Lock |
| 39 | 291-3027 | 2 | Relay, Heater Contactor Delay |
| N/S | 291-3011 | 3 | Switch, Reed |
| N/S | 291-3022 | 1 | Switch, ADC-66 Pre-Wash, Reed (Normally Open) |
| N/S | 291-5102 | 1 | Ground Lug |
| N/S | 289-0001 | 1 | Nameplate, ADS |
| N/S | 289-6617 | 1 | Gasket Material, Control Box (78") |
| N/S | 289-9222 | 1 | Decal, NSF (244 Racks) |
| N/S | 289-9304 | 1 | Wall Chart, Cleaning Instructions, ADS |
| N/S | 291-5110 | 1 | Wire Harness, 3 Phase, ADC-66 |
| N/S | 291-9108 | 4 | Shield, Contactor Overload (Anti-Tamper) |
| N/S | 091-4152 | 1 | Bell Box |
| N/S | 091-4004 | 1 | Bell Box Cover |
| N/S | 286-6181 | 1 | Bracket, Conduit (Back of Machine) |
| N/S | 289-9201 | 1 | Decal, Label Set (Blue & Gray) |
| N/S | 289-9202 | 1 | Decal, Label Set (Yellow & Black for Inside Control Box) |
| N/S | 289-9206 | 1 | Decal, Temperature Gauge, Final Rinse, 180° |
| N/S | 289-9226 | 1 | Decal, Wiring Diagram |
| N/S | 288-1044 | Opt. | Kit, Table Limit Switch |
| N/S | 291-3015 | Opt. | Switch Only, Table Limit |
| N/S | 299-1010 | Rep. | Cover, Temperature Gauge (Screw-On) |
| N/S | 291-5111 | Rep. | Heater Wiring Harness Kit, ADC-66 |
| N/S | 288-1077 | Opt. | Kit, Table Limit, (For Sheet Pan Racks) |
| N/S | 288-1071 | Opt. | Kit, drain Water Tempering |
| N/S | 388-1007 | Opt. | Kit, Vent Fan "Signal Only" |
| N/S | 289-9227 | 1 | Decal, Connect to Supply Source |
| N/S | 289-9237 | 2 | Decal, thermostat Adjustment |
| N/S | 289-9230 | 1 | Decal, Conveyor Buss Bar |
| N/S | 289-9231 | 1 | Decal, Conveyor DP Relay |
| | | | |
| | | | |
| | | | |
| | | | |
| | | | |
| | | | |

265-1100 L-R Water Inlet
Assembly ADC-66
265-1200 R-L Water Inlet

American Dish Service

Assembly ADC-66



265-1100 L-R Water Inlet

Assembly ADC-66

265-1200 R-L Water Inlet

Assembly ADC-66

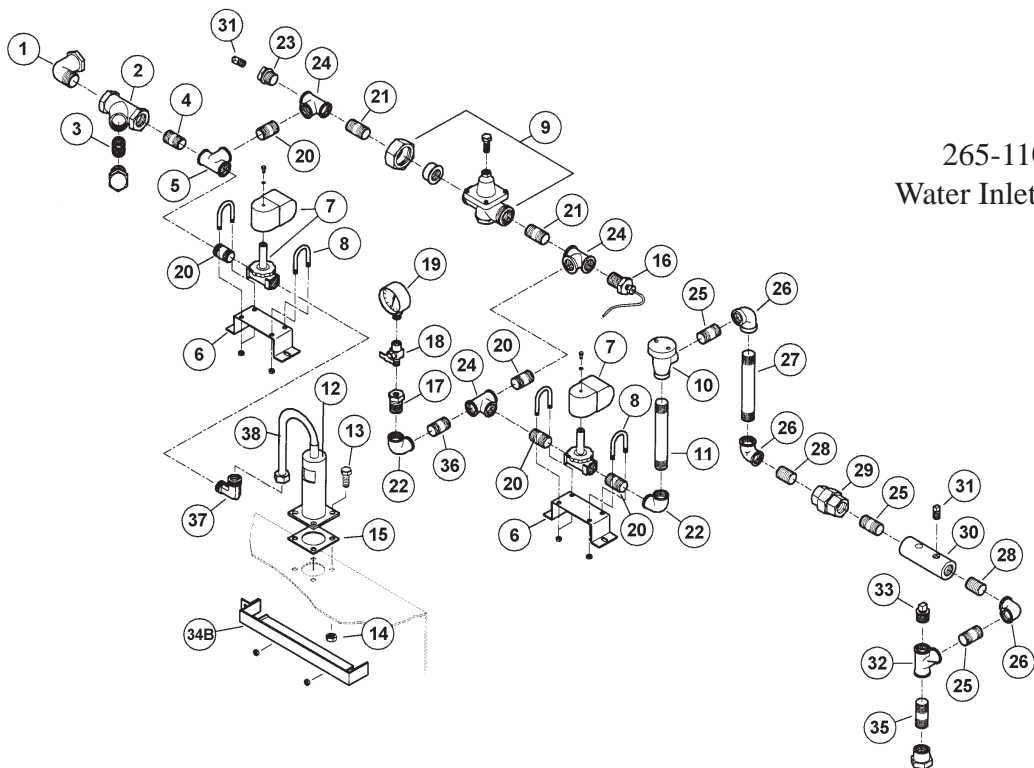
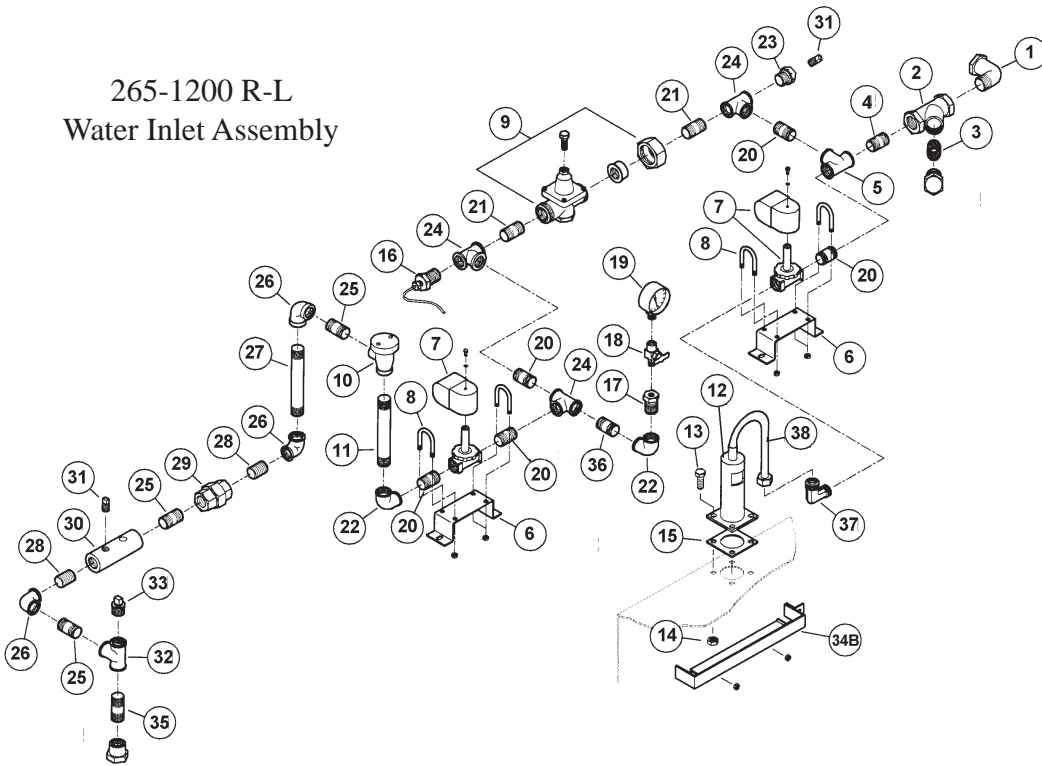
American Dish Service

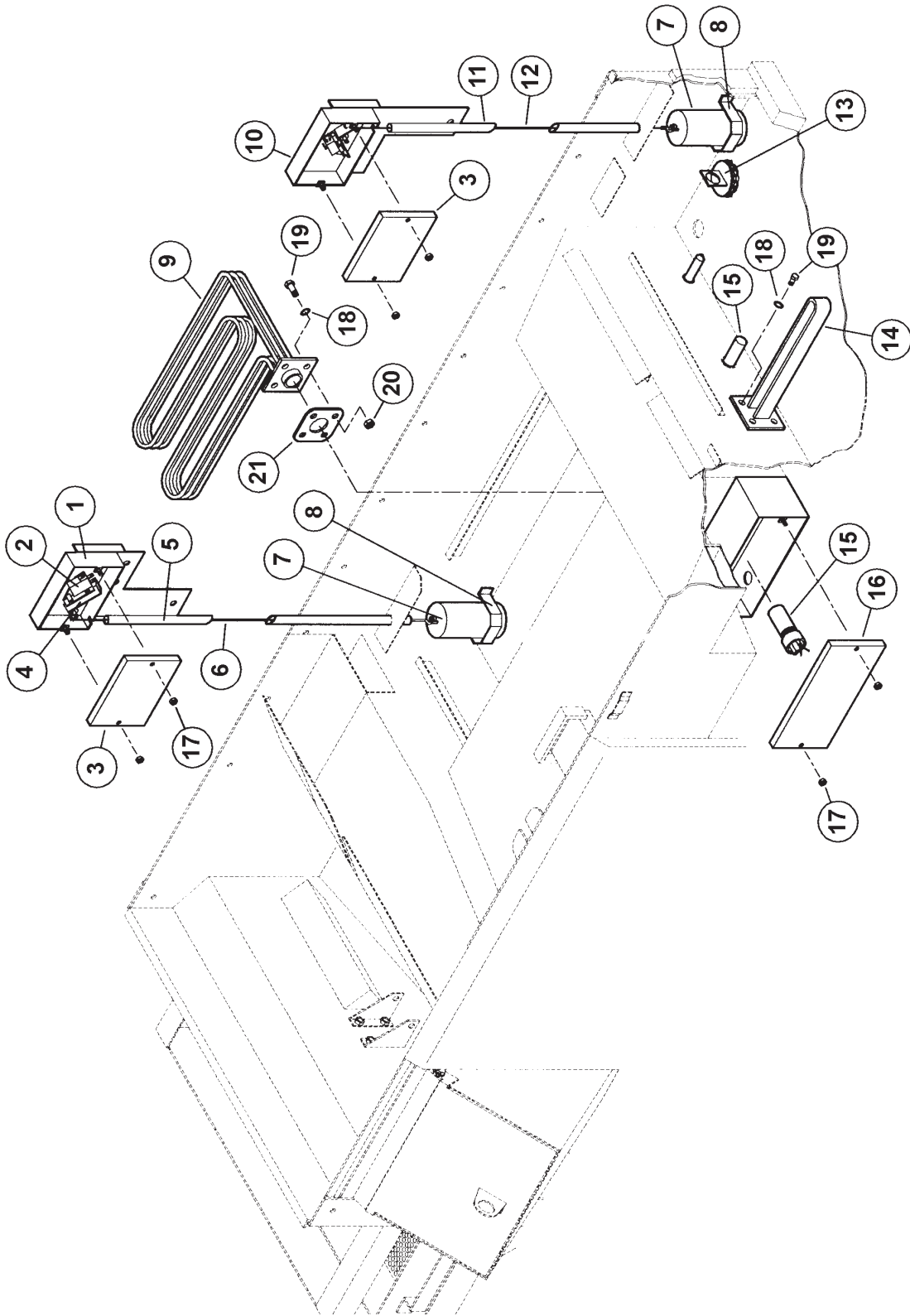
| Ref. No. | Part No. | No. Req. | Description |
|----------|--------------------------|----------|--|
| 1 | 092-1074 | 1 | Fitting, 3/4" Street Elbow, 90° |
| 2 | 092-9006 | 1 | Y-Line Strainer, 3/4" |
| 3 | 092-9008 | Rep. | Screen, Line Strainer, 3/4" (Repair Part) |
| 4 | 092-1073 | 1 | Nipple, 3/4" Close, Brass |
| 5 | 092-1107 | 1 | Fitting, Tee, 3/4" x 1/2" x 1/2", Brass |
| 6 | 286-6191 | 2 | Bracket, Plumbing |
| 7 | 092-5015 | 2 | Valve, Water Solenoid, 1/2" |
| 8 | 098-9027 | 4 | U-Bolt, 1/4-20, SS |
| 9 | 292-5007 | 1 | Pressure Regulator, 1/2" |
| 10 | 092-5045 | 1 | Vacuum Breaker, 1/2" |
| 11 | 292-3008 | 1 | Nipple, 1/2" x 6", SS |
| 12 | 285-6219 | 1 | Air Gap Weldment |
| 13 | 098-1423 | 4 | Bolt, 1/4-20x 1/2", HH, SS |
| 14 | 098-2507 | 4 | Locknut, 1/4-20, SS, W/Nylon Insert |
| 15 | 389-6603 | 1 | Gasket, Air Gap |
| 16 | 299-1004 | 1 | Temperature Gauge, Final Rinse (3' Capillary) |
| 17 | 292-1005 | 1 | Reducer Bushing, 1/2" MPT x 1/4" FPT, Brass |
| 18 | 292-5002 | 1 | Service Cock |
| 19 | 299-1003 | 1 | Pressure Gauge |
| 20 | 292-3001 | 3 | Nipple, 1/2" x 1 1/2" Lg, SS |
| 21 | 292-3014 | 5 | Nipple, 1/2" x 2" Lg, SS |
| 22 | 292-1003 | 2 | Fitting, 1/2" Elbow, 90°, SS |
| 23 | 292-1007 | 1 | Reducer Bushing, 1/2" MPT x 1/8" FPT Brass |
| 24 | 292-1002 | 3 | Fitting, Tee, 1/2" FPT x 1/2" FPT x 1/2" FPT, SS |
| 25 | 292-3001 | 2 | Nipple, 1/2" x 1 1/2" Lg, SS |
| 26 | 292-1003 | 3 | Fitting, Elbow, 1/2" FPT, SS |
| 27 | 292-3008 | 1 | Nipple, 1/2" x 6" Lg, SS |
| 28 | 292-3003 | 2 | Nipple, 1/2" x Close, SS |
| 29 | 292-1004 | 1 | Union, 1/2", SS |
| 30 | 284-6148 | 1 | Mixing Chamber, SS |
| N/S | 284-6147 | Opt. | Mixing Chamber, Polymer |
| 31 | 092-1145 | 2 | Pipe Plug, 1/8" MPT, SS |
| 32 | 292-1002 | 1 | Fitting, Tee, 1/2" FPT x 1/2" FPT, 1/2" FPT, SS |
| 33 | 292-1012 | 1 | Pipe Plug, 1/2" MPT, SS |
| 34A | 285-6147 | 1 | Inlet Water Duct Weldment, L-R |
| 34B | 285-6127 | 1 | Inlet Water Duct Weldment, R-L |

265-1100 L-R Water Inlet
Assembly ADC-66
265-1200 R-L Water Inlet

American Dish Service

Assembly ADC-66



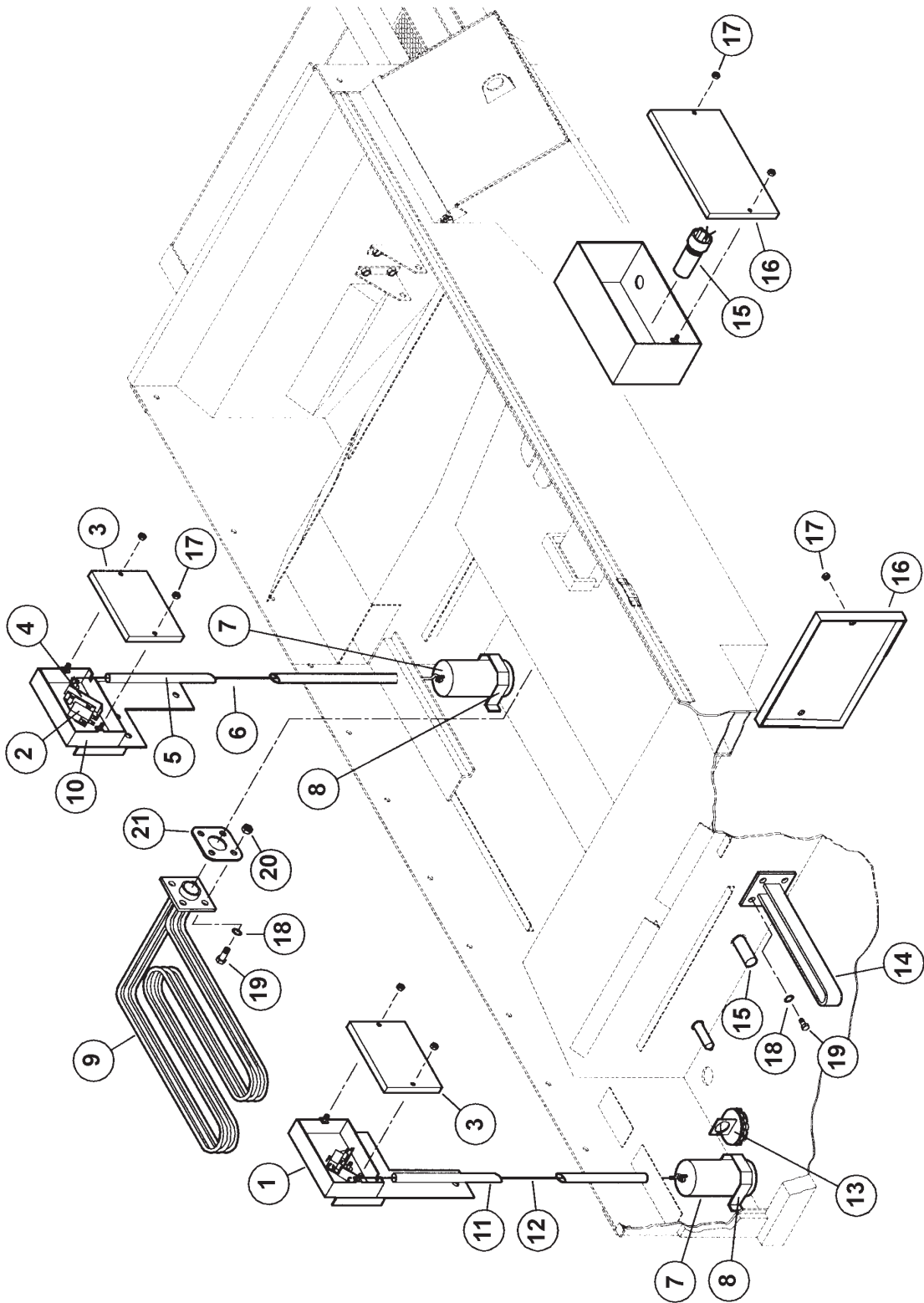


268-1200 L-R

Heater & Water Level Control ADC-66

American Dish Service

| Ref. No. | Part No. | No. Req. | Description |
|----------|--------------------------|----------|---|
| 1 | 285-6177 | 1 | Float Box Weldment, LH |
| 2 | 291-3014 | 2 | Float Switch w/Holder and Button |
| 2A | 291-3013 | Rep. | Float Switch Only |
| 2B | 291-9109 | Rep. | Float Switch Holder |
| 2C | 291-9110 | Rep. | Button, Float Switch Holder |
| 3 | 286-6246 | 2 | Float Box Cover |
| 4 | 285-6179 | 2 | Float Switch Flipper Weldment |
| 5 | 285-6180 | 1 | Float Rod Tube Weldment, Wash, L-R |
| 6 | 286-6248 | 1 | Float Rod, Wash |
| 7 | 285-6176 | 2 | Float Weldment |
| 8 | 286-6199 | 2 | Bracket, Float Retainer |
| 9 | 291-9007 | 1 | Heater, Wash, 18KW, 3 PH |
| 10 | 285-6178 | 1 | Float Box Weldment, RH |
| 11 | 285-6181 | 1 | Float Rod Tube Weldment, Rinse, L-R |
| 12 | 286-6249 | 1 | Float Rod, Rinse |
| 13 | 285-6162 | 1 | Filter Weldment, Pumped Rinse Pump |
| 14 | 291-9003 | 1 | Heater, Rinse, 2.25KW, 3 PH |
| 15 | 291-3012 | 2 | Thermostat |
| 16 | 286-6175 | 2 | Heater Box Cover |
| 17 | 098-2201 | 8 | Locknut, 8-32, SS |
| 18 | 098-2510 | 16 | Washer, 5/16", SS/Neobond |
| 19 | 098-1516 | 8 | Bolt, 5/16-18 x 1", HH, SS |
| 20 | 098-2501 | 8 | Locknut, 5/16-18, SS |
| 21 | 289-6613 | 2 | Gasket, Heater |
| N/S | 286-6231 | 2 | Flange, Heater Sandwich (1 1/2" Hole) |
| N/S | 286-6241 | 4 | Washer, Float Switch Rod, 3/4" OD x 1/8" ID, SS |
| N/S | 098-1106 | 2 | Screw, 6-32 x 1 1/8" PH, SS (Per Float Switch) |
| N/S | 098-2101 | 2 | Nut, 6-32, HH, SS (Per Float Switch) |
| N/S | 291-5111 | Rep. | Wire Harness, Heater, Wash/Rinse, 3 Phase |
| | | | |
| | | | |
| | | | |
| | | | |
| | | | |
| | | | |
| | | | |
| | | | |

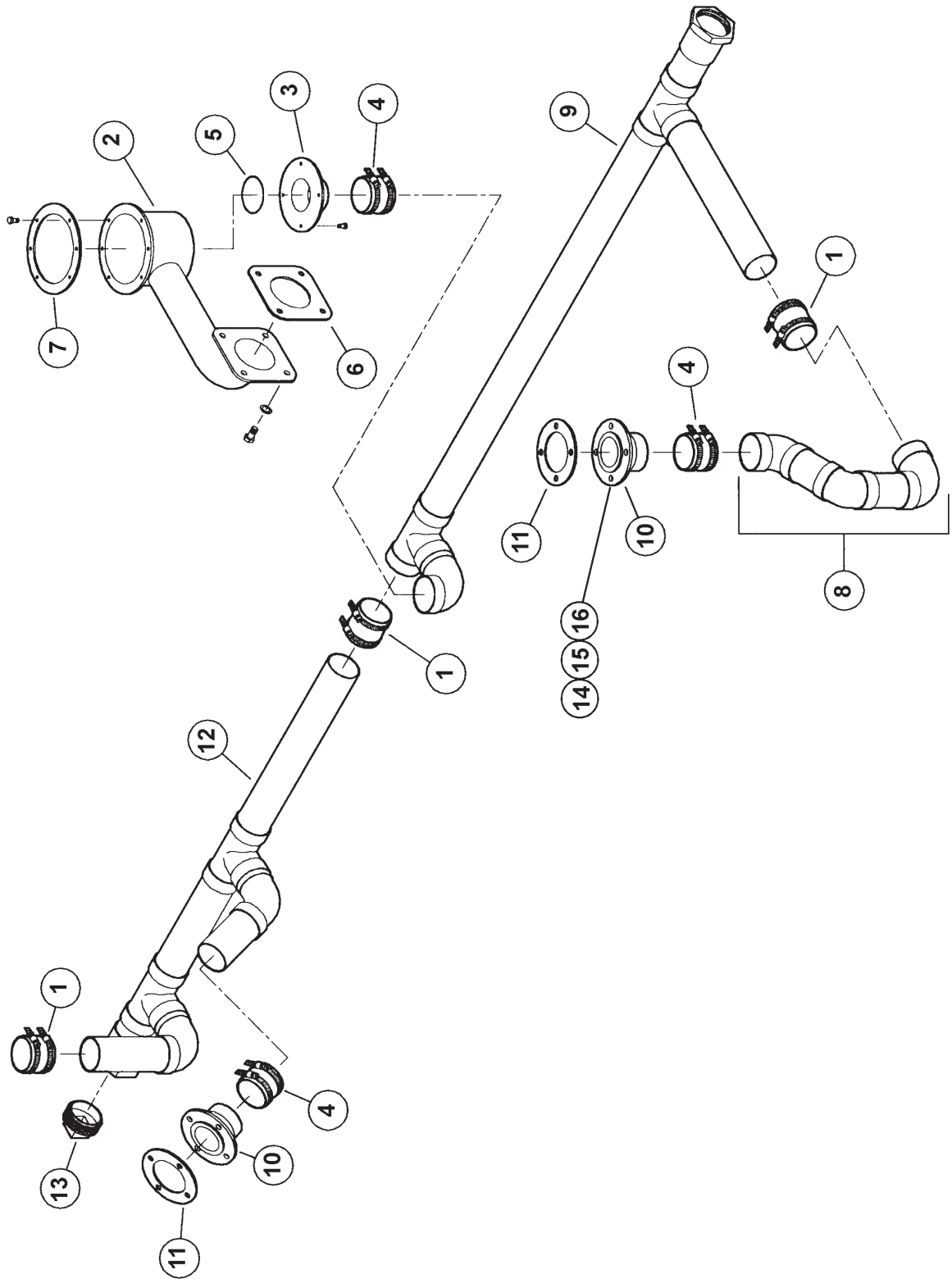


268-1300 R-L

Heater & Water Level Control ADC-66

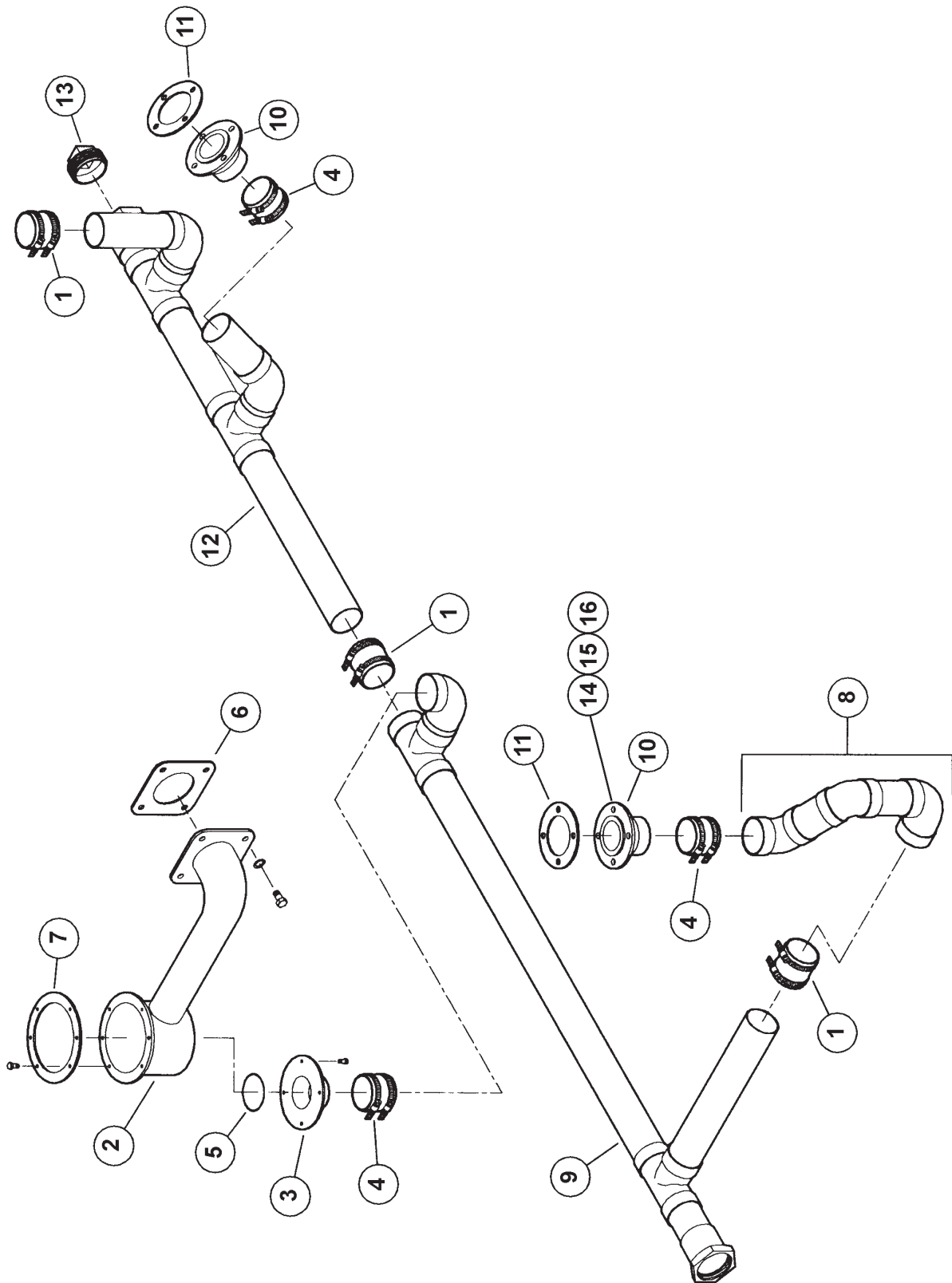
American Dish Service

| Ref. No. | Part No. | No. Req. | Description |
|----------|--------------------------|----------|---|
| 1 | 285-6177 | 1 | Float Box Weldment, LH |
| 2 | 291-3014 | 2 | Float Switch w/Holder and Button |
| 2A | 291-3013 | Rep. | Float Switch Only |
| 2B | 291-9109 | Rep. | Float Switch Holder |
| 2C | 291-9110 | Rep. | Button, Float Switch Holder |
| 3 | 286-6246 | 2 | Float Box Cover |
| 4 | 285-6179 | 2 | Float Switch Flipper Weldment |
| 5 | 285-6148 | 1 | Float Rod Tube Weldment, Wash, R-L |
| 6 | 286-6248 | 1 | Float Rod, Wash |
| 7 | 285-6176 | 2 | Float Weldment |
| 8 | 286-6199 | 2 | Bracket, Float Retainer |
| 9 | 291-9007 | 1 | Heater, Wash, 18KW, 3 PH |
| 10 | 285-6178 | 1 | Float Box Weldment, RH |
| 11 | 285-6149 | 1 | Float Rod Tube Weldment, Rinse, R-L |
| 12 | 286-6249 | 1 | Float Rod, Rinse |
| 13 | 285-6162 | 1 | Filter Weldment, Pumped Rinse Pump |
| 14 | 291-9003 | 1 | Heater, Rinse, 2.25KW, 3 PH |
| 15 | 291-3012 | 2 | Thermostat |
| 16 | 286-6175 | 2 | Heater Box Cover |
| 17 | 098-2201 | 8 | Locknut, 8-32, SS |
| 18 | 098-2510 | 16 | Washer, 5/16", SS/Neobond |
| 19 | 098-1516 | 8 | Bolt, 5/16-18 x 1", HH, SS |
| 20 | 098-2501 | 8 | Locknut, 5/16-18, SS |
| 21 | 289-6613 | 2 | Gasket, Heater |
| N/S | 286-6231 | 2 | Flange, Heater Sandwich (1 1/2" Hole) |
| N/S | 286-6241 | 4 | Washer, Float Switch Rod, 3/4" OD x 1/8" ID, SS |
| N/S | 098-1106 | 2 | Screw, 6-32 x 1 1/8" PH, SS (Per Float Switch) |
| N/S | 098-2101 | 2 | Nut, 6-32, HH, SS (Per Float Switch) |
| N/S | 291-5111 | Rep. | Wire Harness, Heater, Wash/Rinse, 3 Phase |
| | | | |
| | | | |
| | | | |
| | | | |
| | | | |
| | | | |
| | | | |
| | | | |



266-0800 R-L
Drain System Assembly
ADC-66

American Dish Service



American Dish Service

*Manufacturer of low and high temperature
Commercial Dishwashers and Glasswashers*

900 Blake Street
Edwardsville, Kansas 66111
Ph:(913) 422-3700
Fax:(913) 422-6630