

Warmer Drawer

Model WD-50

Owner's Manual

Manufacturing Numbers:
9400162, 9400165, 9400166, 9400167



WARMER DRAWER

TABLE OF CONTENTS

Owner Information	2	Operation	7
General	2	Operating Instructions	7
Warranty Information	2	Hi-Limit Reset	7
Service/Technical Assistance	3	Maintenance	8
Important Safety Information	4	Cleaning	8
Specifications	5	Maintenance (continued)	9
Dimensions	5	Replacing the Thermostat Control Knob	9
Electrical Ratings and Plug Configuration	5	Troubleshooting	10
Capacity	5	Wiring Diagram	11
Installation	6	Replacement Parts	12
Unpacking	6	Notes	14
Equipment Setup	6	Limited Warranty	16

OWNER INFORMATION

General

The Warmer Drawer warms up bread products. Easily adjustable controls allow you to tailor the temperature required for your bread product.

The Warmer Drawers are designed to be used separately, stacked or to fit under the Antunes Hot Dog Corrals.

This manual provides the safety, installation and operating procedures for the Warmer Drawer. We recommend that all information contained in this manual be read prior to installing and operating the unit.

Your Warmer Drawer is manufactured from the finest materials available and is assembled to Antunes's strict quality standards. This unit has been tested at the factory to ensure dependable trouble-free operation.

Warranty Information

Please read the full text of the Limited Warranty in this manual.

If the unit arrives damaged, contact the carrier immediately and file a damage claim with them. Save all packing materials when filing a claim. Freight damage claims are the responsibility of the purchaser and **are not** covered under warranty.

The warranty **does not** extend to:

- Damages caused in shipment or damage as result of improper use.
- Installation of electrical service.
- Normal maintenance as outlined in this manual.
- Malfunction resulting from improper maintenance.
- Damage caused by abuse or careless handling.
- Damage from moisture into electrical components
- Damage from tampering with, removal of, or changing any preset control or safety device.

IMPORTANT! Keep these instructions for future reference.

If the unit changes ownership, be sure this manual accompanies the equipment.

OWNER INFORMATION (continued)

Service/Technical Assistance

If you experience any problems with the installation or operation of your unit, contact your local Antunes Authorized Service Agency.

Fill in the information below and have it handy when calling your authorized service agency for assistance. The serial number is on the specification plate located on the unit.

Purchased From: _____

Date of Purchase: _____

Model No.: _____

Serial No.: _____

Mfg. No.: _____

Refer to the service agency directory included with your unit.

Authorized Service Agency

Name: _____

Phone No.: _____

Address: _____

Use only genuine Antunes replacement parts in this unit. Use of replacement parts other than those supplied by the manufacturer will void the warranty. Your Authorized Service Agency has been factory trained and has a complete supply of parts for this unit.

You may also contact the factory at **1-877-392-7854** if you have trouble locating your local authorized service agency.

WARMER DRAWER

IMPORTANT SAFETY INFORMATION

In addition to the warnings and cautions in this manual, use the following guidelines to safely operate this unit:

- Read all instructions before using equipment.
- For your safety, the equipment is furnished with a properly grounded cord connector. Do NOT attempt to defeat the grounded connector.
- Install or locate the equipment only for its intended use as described in this manual. Do NOT use corrosive chemicals in this equipment.
- Do NOT operate this equipment if it has a damaged cord or plug, if it is not working properly, or if it has been damaged or dropped.
- This equipment should be serviced by qualified personnel only. Contact the nearest Antunes Authorized Service Agency for repair.
- Do NOT block or cover any openings on the unit.
- Do NOT immerse cord or plug in water.
- Keep cord away from heated surfaces.
- Do NOT allow cord to hang over edge of table or counter.

The following warnings and cautions appear throughout this manual and should be carefully observed:

- Turn the power off, unplug the power cord, and allow unit to cool down before performing any service or maintenance.

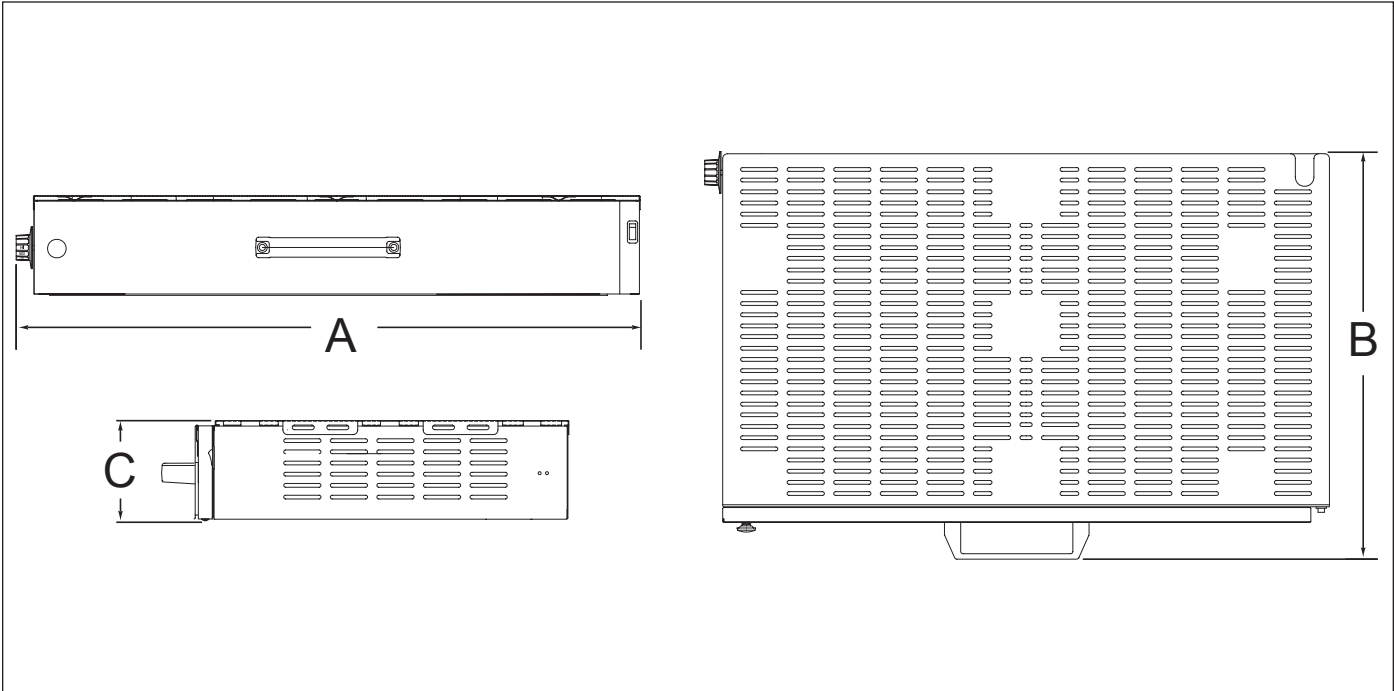
- The procedures in this chapter may include the use of chemical products. These chemical products will be highlighted with bold face letters followed by the abbreviated HCS (Hazard Communication Standard). See Hazard Communication Standard manual for the appropriate Material Safety Data Sheets (MSDS).
- The unit should be grounded according to local electrical codes to prevent the possibility of electrical shock. It requires a grounded receptacle with separate electrical lines, protected by fuses or circuit breaker of the proper rating.
- All electrical connections must be in accordance with local electrical codes and any other applicable codes.
- **WARNING ELECTRICAL SHOCK HAZARD. Failure to follow these instructions could result in serious injury or death.**
 - Electrical ground is required on this appliance.
 - Do NOT modify the power supply cord plug. If it does not fit the outlet, have a proper outlet installed by a qualified electrician.
 - Do NOT use an extension cord with this unit.
 - Check with a qualified electrician if you are unsure if the appliance is properly grounded.

⚠ WARNING ⚠

ELECTRICAL SHOCK HAZARD. Failure to follow the instructions in this manual could result in serious injury or death.

- **Electrical ground is required on this appliance.**
- **Do NOT modify the power supply cord plug. If it does not fit the outlet, have a proper outlet installed by a qualified electrician.**
- **Do NOT use an extension cord with this unit.**
- **Check with a qualified electrician if you are unsure if the appliance is properly grounded.**

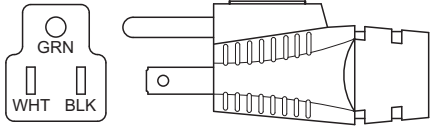
SPECIFICATIONS



Dimensions

Model & Mfg. No.	Width (A)	Depth (B)	Height (C)	Operating Weight	Shipping Weight
WD-50 9400162 9400165	32 1/2" (826 mm)	21 7/8" (556 mm)	5 3/8" (137 mm)	62 lbs. (28 kg)	68 lbs. (31 kg)
WD-50 9400166 9400167	32 1/2" (826 mm)	21 7/8" (556 mm)	5 3/8" (137 mm)	64 lbs. (29 kg)	70 lbs. (32 kg)

Electrical Ratings and Plug Configuration

Model & Mfg. No.	Volt	Watts	Amps	Hz	Plug Description	Plug Configuration
WD-50 9400162 9400165 9400166 9400167	120	1400	11.7	50/60	5-15P, 15 Amp., 250 VAC	

Capacity

WD-50 One 2-1/2" (65 mm) deep 2/3-size pan and two 2-1/2" (65 mm) deep 1/3-size pans.
Holds 60-80 standard size hot dogs.

NOTE: Units with Manufacturing Number 9400165 do not include serving pans or the top Heat Shield.

WARMER DRAWER

INSTALLATION

Unpacking

1. Remove unit and all packing materials from the shipping carton.
2. Open the large box. Remove all packing materials and protective coverings from the unit and parts.
3. Wash all removable parts in soap and water and wipe all surfaces of the unit with a hot damp cloth.

NOTE: Do NOT use a dripping wet cloth. Wring out before use.

4. Reinstall all removed parts.

NOTE: If any parts are missing or damaged, contact Antunes IMMEDIATELY at 1-877-392-7854.

Equipment Setup

When placing the unit into service, pay attention to the following guidelines.

- Make sure power is turned off and the unit is at room temperature.
- Do NOT block or cover any openings on the unit.
- Do NOT immerse cord or plug in water.
- Keep cord away from heated surfaces.
- Do NOT allow cord to hang over edge of table or counter.

Connect the unit to the power supply. Refer to the specification plate for the proper voltage.

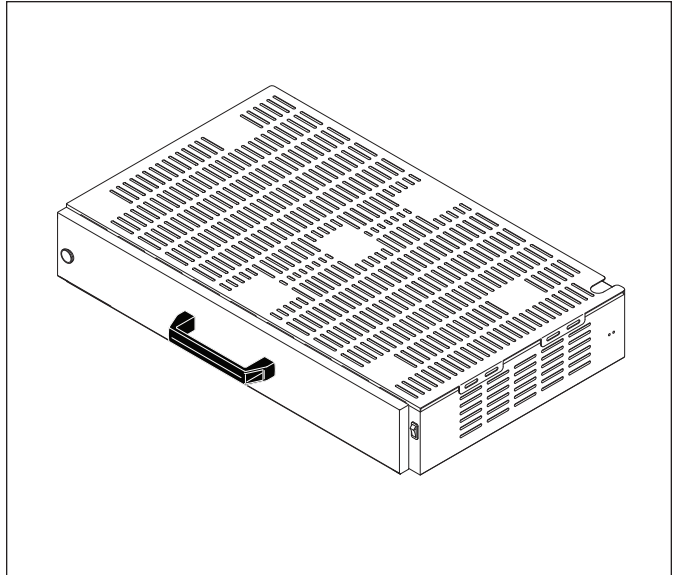


Figure 1. WD-50

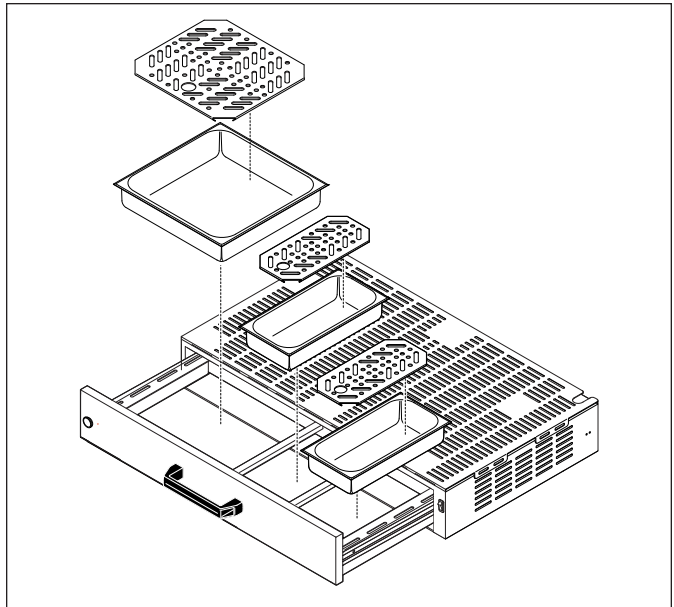


Figure 2. WD-50 Accessories

OPERATION

Operating Instructions

The recommended minimum holding temperature for proteins is 160°F (71°C). Your operation may require temperature adjustment up or down, depending on product and usage.

Protein products should be cooked in advance and will be ready to serve for up to 2 hours when held inside the unit.

1. Turn the unit on.
2. Set the Thermostat Control Knob to the minimum setting as shown in Figure 3.
3. Load product into the drawer.

Hi-Limit Reset

A Hi-Limit Thermostat with a reset switch is contained in the heating circuit. If the unit should overheat for any reason, the Hi-Limit Thermostat opens and cuts off power to the Heating Element. The Hi-Limit Thermostat will reset automatically after the unit cools.

If the Hi-Limit Thermostat continually trips, contact your Authorized Service Agency to determine the reason for overheating.

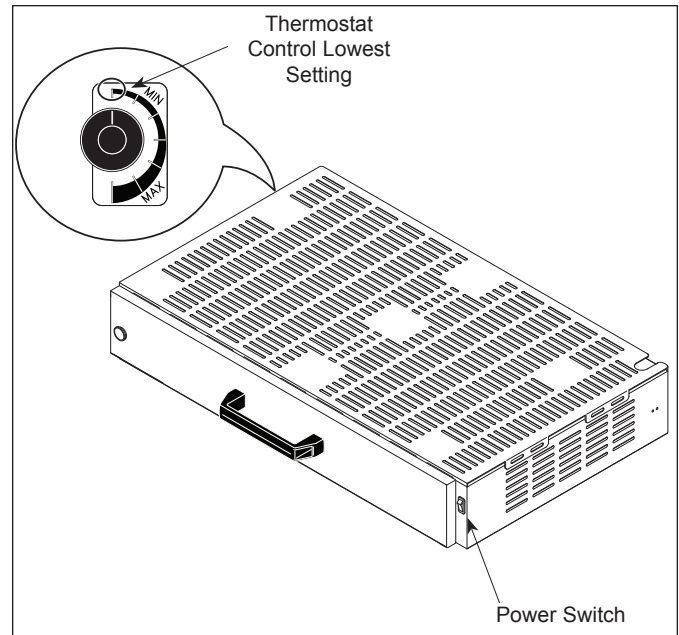


Figure 3. Controls

WARMER DRAWER

MAINTENANCE

⚠ WARNING ⚠

Turn the power off, unplug the power cord, and allow the unit to cool down before performing any service or maintenance.

⚠ CAUTION ⚠

To prevent damage to the unit, do NOT use abrasive cleaners on the unit.

⚠ WARNING ⚠

Use caution when using caustic cleaning solutions. Read all manufacturer label instructions to avoid personal injury.

Cleaning

DAILY

1. Turn the power off, unplug the power cord, and allow the unit to cool down.
2. Remove all parts from inside the Warmer Drawer. Wash all parts in soap and water, rinse in clear water, and wipe dry.
3. Wipe the exterior of unit with a damp cloth or stainless steel cleaner, then wipe dry with a clean, dry cloth.
4. Re-install all parts into Warmer Drawer.

NOTE: Failure to properly clean and dry the parts prior to reassembly may result in the accumulation of water/moisture overnight. This may lead to permanent damage of the equipment finish and its accessories that is not covered by the warranty.

WEEKLY

1. Turn the power off, unplug the power cord, and allow the unit to cool down.
2. Remove all parts from the Warmer Drawer. Wash all parts in soap and water, rinse in clear water, and wipe dry.
3. Pull the Drawer out by pushing down simultaneously on both interlocking tabs and then pulling the Drawer away from unit (Figure 4).
4. Wipe the interior of the Warmer Drawer with a clean, damp cloth.
5. Wipe dry the interior of the Warmer Drawer with a clean, dry cloth.
6. Wipe the exterior of unit with a damp cloth or stainless steel cleaner, then wipe dry with a clean, dry cloth.
7. Re-install all parts into unit and plug in the power cord.

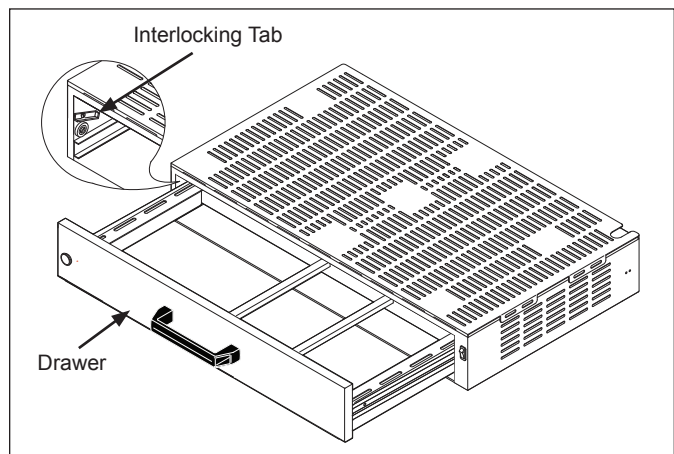


Figure 4. Removing Drawer

MAINTENANCE (continued)

Replacing the Thermostat Control Knob

If the Thermostat Control is removed or needs to be replaced, follow the steps below to ensure it is installed correctly. If the Thermostat Control is improperly installed, the unit will not operate at the set temperatures, which would impact the quality of the food product inside.

1. Turn off the unit and unplug the power cord.
2. Remove the Thermostat Control Knob on the left side of the unit by loosening the set screw located opposite of the Knob indicator line.
3. Turn the Thermostat Post by hand so the flat side is facing up (Figure 5).
4. Carefully install the Thermostat Control onto the Thermostat Post (Figure 5), and tighten the set screw.
5. Test the Thermostat Control by ensuring it can easily be turned to each of the 7 settings.
6. Plug in the power cord, turn on the power, and test the unit before returning it to service.

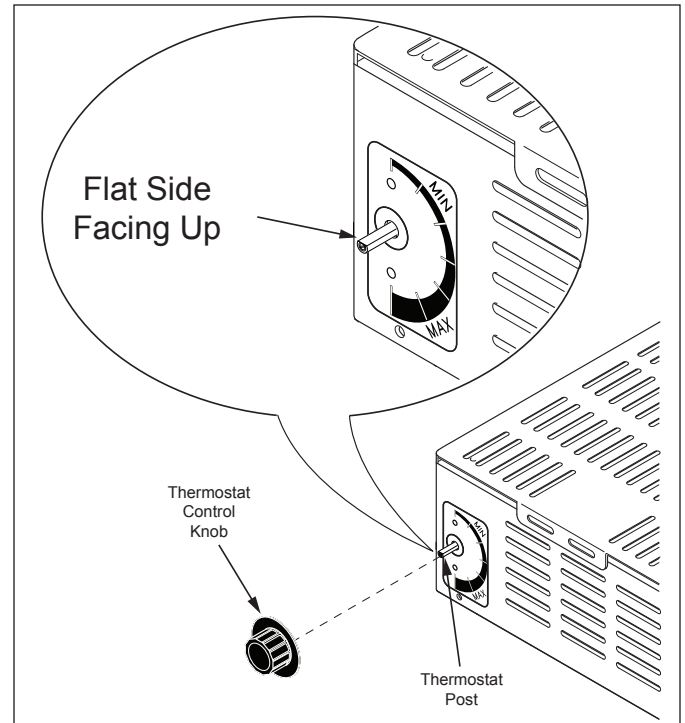


Figure 5. Replacing the Thermostat Control

WARMER DRAWER

TROUBLESHOOTING

⚠ WARNING ⚠

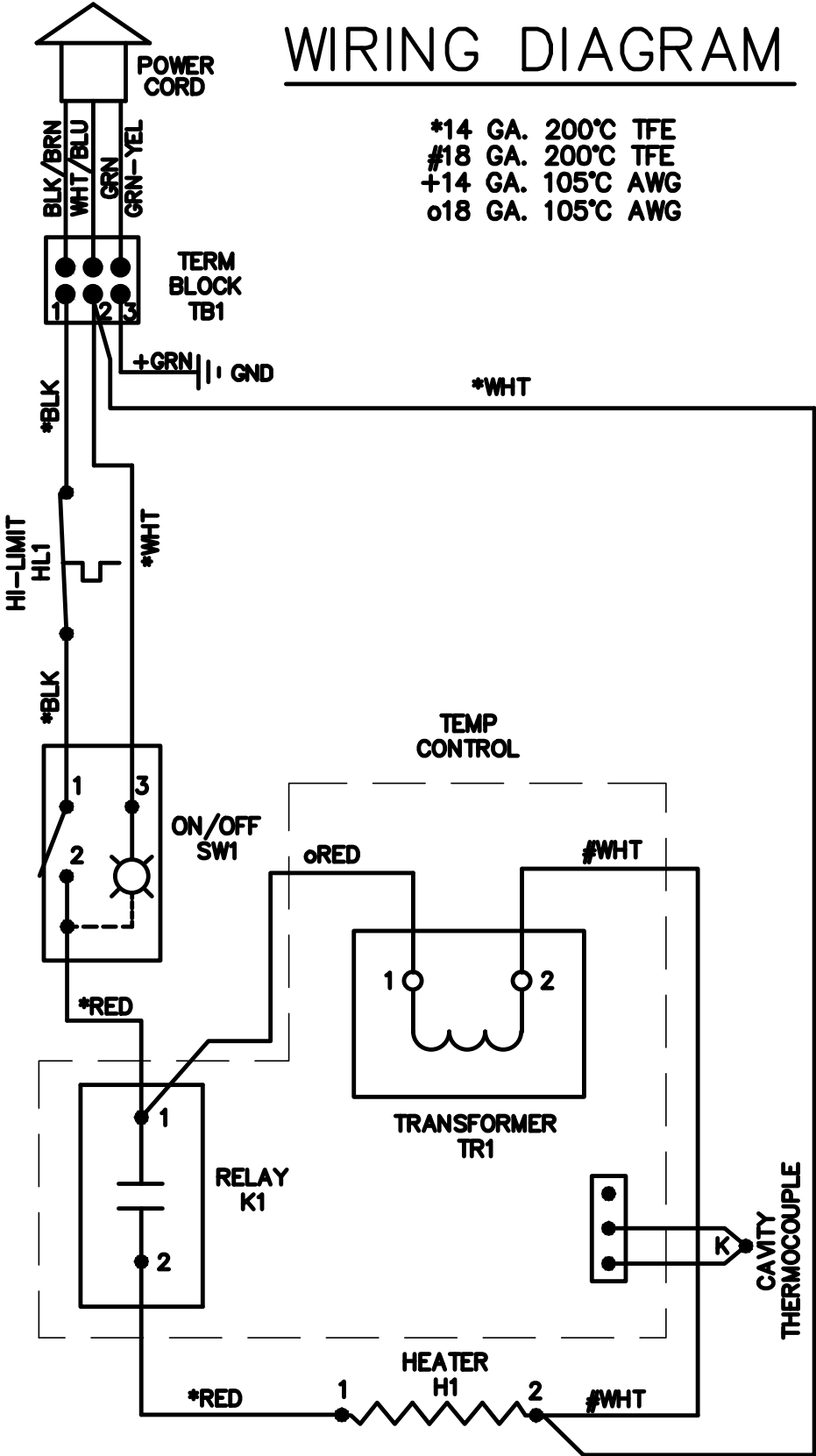
To avoid possible personal injury and/or damage to the unit, inspection, test and repair of electrical equipment should be performed by qualified service personnel. The unit should be unplugged when servicing.

Problem	Possible Cause	Corrective Action
Unit will not heat up.	Power cord is not plugged in.	Plug the Power cord into the appropriate outlet.
	Circuit Breaker is tripped.	Reset the Circuit Breaker. Contact your electrician if the breaker trips again.
	Hi-Limit Thermostat is tripped or inoperable.	Hi-Limit Thermostat will reset automatically once the unit cools down. If after cooling the unit still does not heat up, contact your maintenance person or Authorized Service Agency for service.
	Loose, broken, or burnt wiring in Heating Circuit.	Contact your maintenance person or Authorized Service Agency for service.
	Faulty Heating Element.	Contact your maintenance person or Authorized Service Agency for service.
	Faulty Thermostat Control.	Refer to <i>Replacing the Thermostat Control</i> in the Maintenance section of this manual. Contact your maintenance person or Authorized Service Agency for service.
Product becomes hard and dry.	Thermostat Control is too high.	Readjust the Thermostat Control.
	Product is not being kept in its original packaging.	Refer to the Operating Instructions section of this Manual.
	Product is kept beyond the normal holding times.	Refer to the Operating Instructions section of this manual.
Unit is getting too hot.	Thermostat Control is set too high.	Readjust the Thermostat Control.
	Faulty Thermostat Control.	Refer to <i>Replacing the Thermostat Control</i> in the Maintenance section of this manual. Contact your maintenance person or Authorized Service Agency for service.

WIRING DIAGRAM

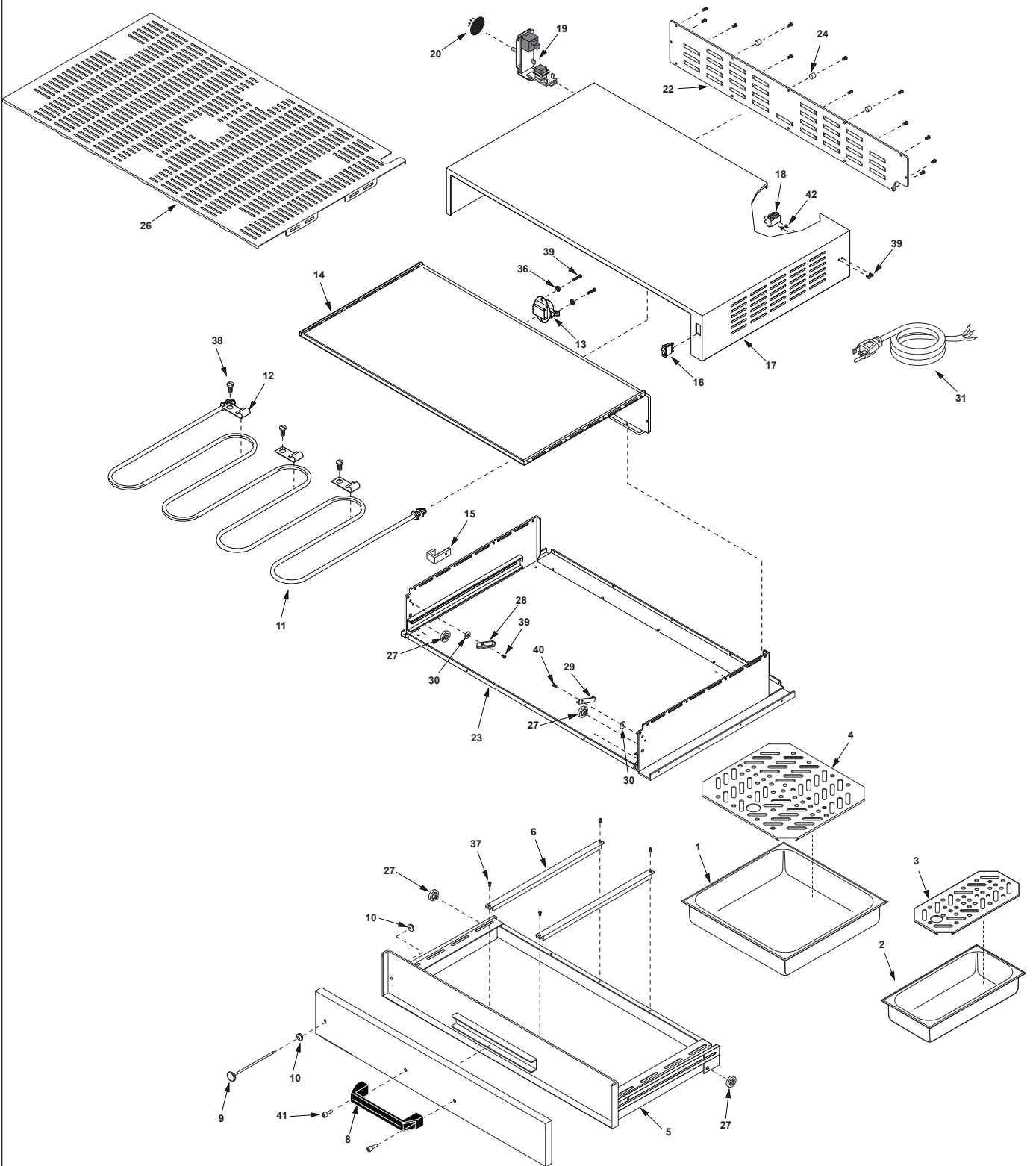
WIRING DIAGRAM

- *14 GA. 200°C TFE
- #18 GA. 200°C TFE
- +14 GA. 105°C AWG
- o18 GA. 105°C AWG



WARMER DRAWER

REPLACEMENT PARTS



REPLACEMENT PARTS (continued)

Item	Part No.	Description	Qty.
1	2130181**	2/3-Size Pan, 2.5" Dp.	1
2	2130182**	1/3-Size Pan, 2.5" Dp.	2
3	0505866**	Pan Bottom, 1/3-Size	2
4	0505865**	Pan Bottom, 2/3-Size	1
5	0021594	Drawer Weldment	1
6	0505862	Pan Divider	2
8	2100318	Handle, Drawer	1
9	4030412	Thermometer	1
10	0400398	Grommet (not shown)	1
11	4030415	Heating Element	1
12	2110193	Clip, Heating Element	3
13	4030189	Thermostat, 300°F	1
14	0504627	Inner Liner, Top/Back	1
15	0505982	Probe Retainer Bracket	1
16	4010228	Power Switch	1
17	0504619	Cover Weldment	1
18	4060355	Terminal Block, 3 Pole	1
19	4070144	Elec. Thermostat Assembly	1
20	2100322	Knob, Thermostat	1
21	4050214	Thermostat Probe, 315°F (Not Shown)	1

Item	Part No.	Description	Qty.
22	0504618	Rear Panel	1
23	0504626	Bottom Weldment	1
24	2120148	Brass Spacer	3
26	0021596*	Heat Shield Weldment	1
27	2100195	Roller Bearing	4
28	0504264	Lock Lever, Left	1
29	0504266	Lock Lever, Right	1
30	0504265	Spacer	2
31	0700463	Power Cord, 14/3 5-15P	1
32	0504623	Front Drawer Panel	1
35	0400354	Strain Relief Elbow (not shown)	1
36*	306P130	Nut, Hex KEPS #6-32	1
37*	308P103	Screw, #8-32 x 1/4" Sltrshd	1
38*	308P133	Screw, #8-32 x 1/4" Panhd	1
39*	306P113	Screw, #6-32 x 5/8" Slrndhd	1
41*	3310115	Shcap 5/16-18 x 7/8" Lg.	1
42*	306P101	Nut, Hex #6-32	1

*Available only in packages of 10
 ** Not included with Mfg. No. 9400165

Limited Warranty

Equipment manufactured by Food Equipment Division of Antunes has been constructed of the finest materials available and manufactured to high quality standards. These units are warranted to be free from mechanical and electrical defects for a period of one year from date of purchase or 18 months from shipment from factory, whichever occurs first, under normal use and service, and when installed in accordance with manufacturer's recommendations. To ensure continued proper operation of the units, follow the maintenance procedure outlined in the Owner's Manual.

1. This warranty does not cover cost of installation, defects caused by improper storage or handling prior to placing of the Equipment. This warranty does not include overtime charges or work done by unauthorized service agencies or personnel. This warranty does not cover normal maintenance, calibration, or regular adjustments as specified in operating and maintenance instructions of this manual, and/or labor involved in moving adjacent objects to gain access to the Equipment. This warranty does not cover consumable items such as platen release sheet and conveyor belt wraps. **This warranty does not pay travel, mileage, or any other charges for an authorized service agency to reach the equipment location.**
2. Antunes reserves the right to make changes in design or add any improvements on any product. The right is always reserved to modify equipment because of factors beyond our control and government regulations. Changes to update equipment do not constitute a warranty charge.
3. **If shipment is damaged in transit, the purchaser should make a claim directly upon the carrier. Careful inspection should be made of the shipment as soon as it arrives and visible damage should be noted upon the carrier's receipt. Damage should be reported to the carrier. This damage is not covered under this warranty.**
4. Warranty charges do not include freight or foreign, excise, municipal or other sales or use taxes. All such freight and taxes are the responsibility of the purchaser.
5. THIS WARRANTY IS EXCLUSIVE AND IS IN LIEU OF ALL OTHER WARRANTIES, EXPRESSED OR IMPLIED, INCLUDING ANY IMPLIED WARRANTY OR MERCHANTABILITY OR FITNESS FOR A PARTICULAR PURPOSE, EACH OF WHICH IS HEREBY EXPRESSLY DISCLAIMED. THE REMEDIES DESCRIBED ABOVE ARE EXCLUSIVE AND IN NO EVENT SHALL ANTUNES BE LIABLE FOR SPECIAL CONSEQUENTIAL OR INCIDENTAL DAMAGES FOR THE BREACH OR DELAY IN PERFORMANCE OF THIS WARRANTY.



Corporate Headquarters

Carol Stream, Illinois

Phone: +1 (630) 784-1000

Toll Free: +1 (800) 253-2991

Fax: +1 (630) 784-1650

China Facility

Suzhou, China

Phone: +86-512-6841-3637

Fax: +86-512-6841-3907