

# Radiant Toaster Dual Lane

Model RT-2H

Owner's Manual

**Mfg. Number:**

9211051

## Contents

<b>Overview</b> .....	2
Before Use .....	2
In Case of Damage .....	2
Website .....	2
<b>Service/Technical Assistance</b> .....	2
In Case of Damage .....	2
Equipment Information to Save.....	2
Authorized Service Agency .....	2
<b>Safety Information</b> .....	3
Installation .....	3
Maintenance.....	3
Service .....	3
<b>Specifications</b> .....	4
Dimensions .....	4
Electrical Ratings .....	4
<b>Installation</b> .....	5
<b>Operating Instructions</b> .....	6
Toasting Product .....	6
Shutting down the Toaster.....	6
Hi-Limit Reset Button .....	6
Error Messages.....	6
<b>Menu Options</b> .....	7
Edit Product Settings.....	7
Adding Products.....	7
Edit Settings .....	7
Factory Reset.....	7
<b>Maintenance</b> .....	7
Quarterly Maintenance.....	7
Inspect Conveyor Belt Chain.....	7
Measuring Conveyor Belt Chain .....	7
<b>Conveyor Belt Chain Maintenance</b> .....	8
Replacing the Conveyor Belt Chain .....	8
<b>Troubleshooting</b> .....	9
<b>Wiring Diagram</b> .....	11
<b>Replacement Parts</b> .....	12
Parts List .....	12
Exploded Diagram 1.....	14
Exploded Diagram 2.....	15
Exploded Diagram 3.....	16
Exploded Diagram 4.....	17
<b>Notes</b> .....	18
<b>Notes</b> .....	19
<b>Limited Warranty</b> .....	20

## Overview

This unit is intended to be used for commercial applications, for example: in kitchens of restaurants, canteens, hospitals and in commercial enterprises such as bakeries, butcheries, etc., But not for continuous mass production of food.

### Before Use

This manual contains safety, installation, and operating procedures for the unit. Read and understand it completely before installing or operating the unit. Keep this document for reference. If the unit changes ownership, this manual must accompany it.

### In Case of Damage

If the unit arrives damaged, file a claim with the carrier immediately. Save all packing materials when filing a claim. Freight damage claims are the responsibility of the purchaser and are not covered under warranty.

### Website

[www.antunes.com](http://www.antunes.com)

## Service/Technical Assistance

### In Case of Damage

If any parts are missing or damaged, problems with the installation or operation of this product contact Antunes Customer Service immediately at +1-877-392-7856 (toll free).

Fill in the information in the next section and have it ready when calling for assistance. The serial number is on the specification sticker located on the system.

### Equipment Information to Save

Purchased from:

\_\_\_\_\_

Date of purchase:

\_\_\_\_\_

Model number:

\_\_\_\_\_

Serial number:

\_\_\_\_\_

Manufacturing number:

\_\_\_\_\_

### Authorized Service Agency

Name:

\_\_\_\_\_

Phone No:

\_\_\_\_\_

Address:

\_\_\_\_\_

# Safety Information

## Installation

- Read and understand all instructions before installing or using the unit.
- Install this unit to comply with the basic plumbing code of the Building Officials and Code Administrators, Inc. (BOCA) and the Food Service Sanitation Manual of the Food and Drug Administration (FDA).
- Install and locate the equipment only for its intended use as described in this manual.

### **WARNING**

**ELECTRICAL SHOCK HAZARD.**  
Failure to follow the instructions in this manual could result in serious injury or death.

Do not modify the power supply cord plug. If it does not fit the outlet, have a proper outlet installed by a qualified electrician.

Electrical ground is required on this appliance.

Check with a qualified electrician if you are unsure if the appliance is properly grounded.

Do NOT use an extension cord with this product.

The unit should be grounded according to local electrical codes to prevent the possibility of electrical shock. It requires a grounded receptacle with separate electrical lines, protected by fuses or circuit breaker of the proper rating.

NEVER unplug the power cord while the unit is running. Use the proper shutdown procedure before unplugging the power cord.

## Operation

- The unit is furnished with a properly grounded cord connector. Do not attempt to defeat the grounded connector.
- Do not operate the unit if it has been damaged or dropped, if it has a damaged cord or plug, or if it is not working properly.
- Do not block or cover any openings on the equipment.
- Do not immerse the cord, unit, or plug in water.
- Keep the cord away from heated surfaces.
- Do not allow the cord to hang over the edge of a table or counter.
- This appliance is not to be used by persons (including children) with reduced physical, sensory or mental capabilities, or lack of experience and knowledge unless they have been given supervision or instruction.
- Children being supervised are not to play with the appliance.
- Bread may burn. Therefore toasters must not be used near or below curtains or other combustible walls and materials. Failure to maintain safe operating distances may cause discoloration or combustion.

## Maintenance

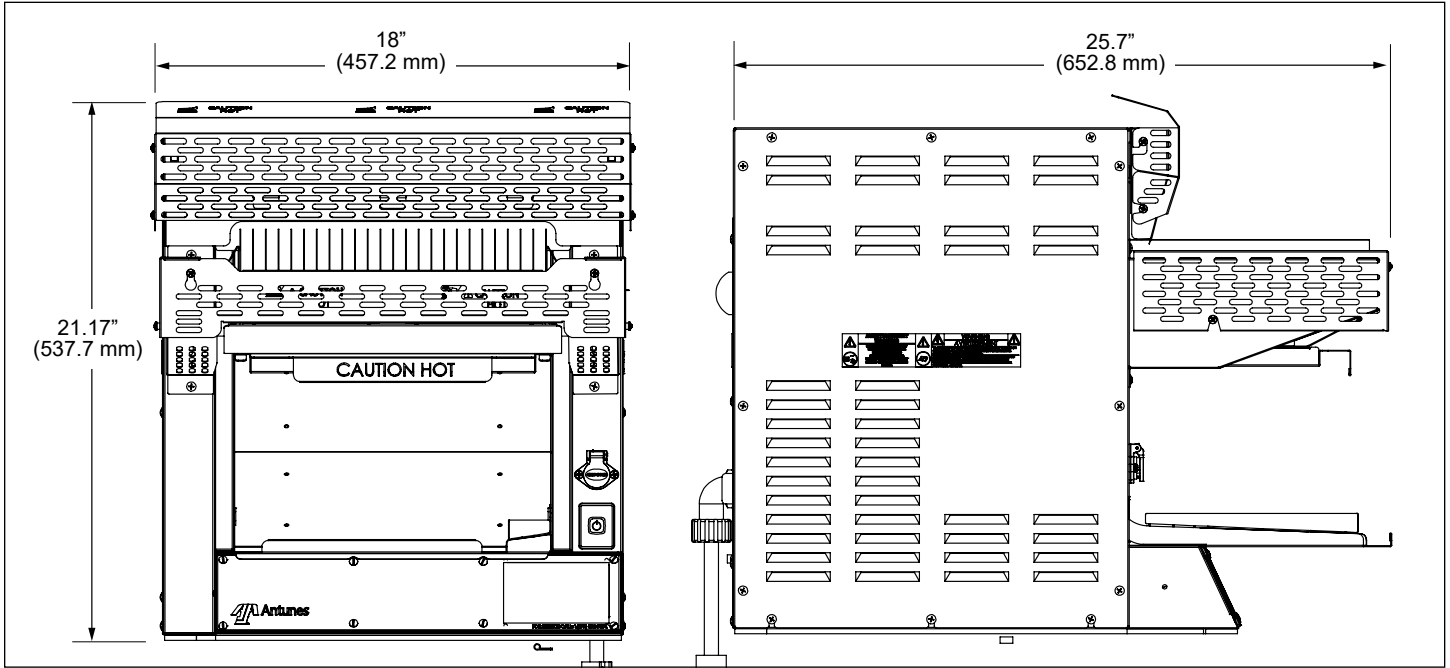
- Do not use abrasive materials; they can damage the unit's stainless steel finish.
- Do not use corrosive chemicals in this equipment.
- Chlorides or phosphates in cleaning agents (e.g., bleach, sanitizers, degreasers, and detergents) can permanently damage stainless steel equipment. The damage is usually in the form of discoloration, dulling of the metal surface finish, pits, voids, holes, or cracks. This damage is permanent and is not covered by warranty.
- Always use a soft, damp cloth for cleaning. Rinse with clear water and wipe dry. When required, always rub in the direction of metal polish lines.
- Routine cleaning should be performed daily with soap and water.
- Rub off finger marks and smears using soap and water.
- Do not clean unit or components in a dishwasher unless specifically specified in the cleaning instructions.
- Do not clean the unit with a water jet or steam cleaner.

## Service

- Inspection, testing, and repair of electrical equipment must be performed only by qualified service personnel.
- To avoid possible personal injury and/or damage to the unit, all inspections, tests, and repair of electrical equipment should be performed by qualified personnel ONLY. Contact Antunes Technical Service for adjustment or repair.
- Turn the power off, unplug the power cord, and allow unit to cool to room temperature before performing any service or maintenance.
- If the supply cord is damaged, it must be replaced by the manufacturer, its service agent, or a similarly qualified person in order to avoid an electrical hazard.
- Cleaning and user maintenance shall not be made by children without supervision.

# Specifications

## Dimensions



Model	Width	Depth	Height
9211051 RT-2H	18" (457 mm)	25.7" (653.8 mm)	21.17" (537.7 mm)

### Shipping Weight

- 95 lbs

### Unit Weight

- 86 lbs

## Electrical Ratings

Model	Volts	Watts	Amps	Hertz	Plug Description
9211051 RT-2H	208~	5000	24	50/60	L6-30P, 30 Amp., 250 Volt Straight Twist Lock

# Installation

**NOTE:** When placing the toaster into service, make sure to provide at least 3 inches of space on all sides of the unit.

1. Remove unit and all packing materials from shipping carton.

**NOTE:** If any parts are missing or damaged, contact Antunes Technical Service IMMEDIATELY at 1-877-392-7854 or 1-630-784-1000.

2. Remove all packing materials and protective coverings from the unit.
3. Remove all accessories Wash these items at the 3 compartment sink and set aside to air dry
4. Wipe all surfaces of the unit with a hot damp cloth.

**NOTE:** Do NOT use a dripping wet cloth. Wring out before use.

5. Re-install the Crumb Tray and Bun Chute.

When placing the unit into service, pay attention to the following guidelines:

- Make sure the unit is at room temperature before plugging in the power cord.
- Do not block or cover any openings on the unit.
- Do not immerse the power cord or plug in water.
- Keep the power cord away from heated surfaces.
- Do not allow the power cord to hang over edge of table or counter.
- Allow 3-4" of clearance around the toaster for ventilation.

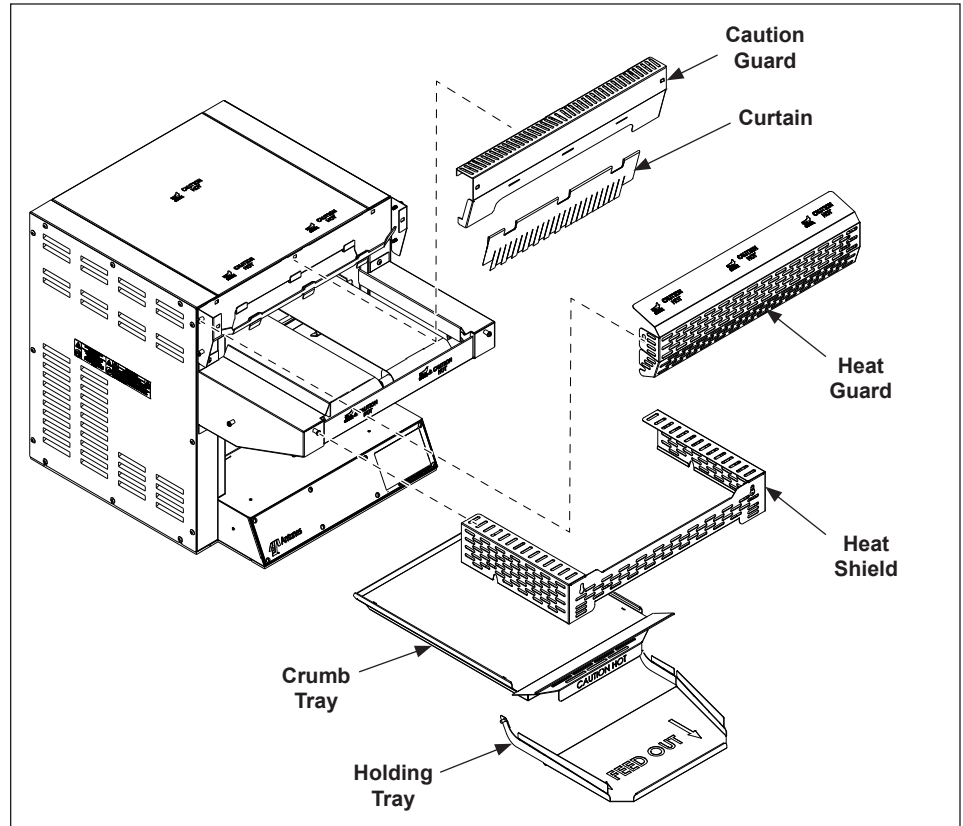


Figure 1. Components

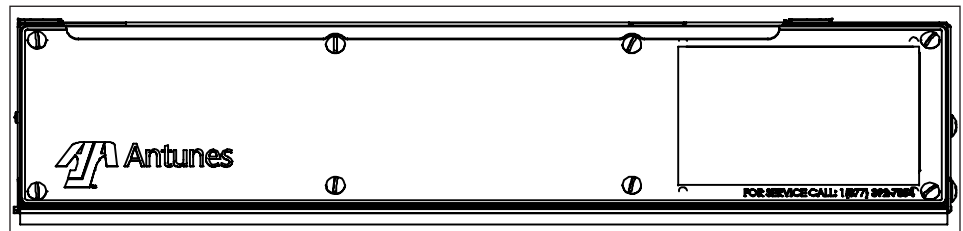


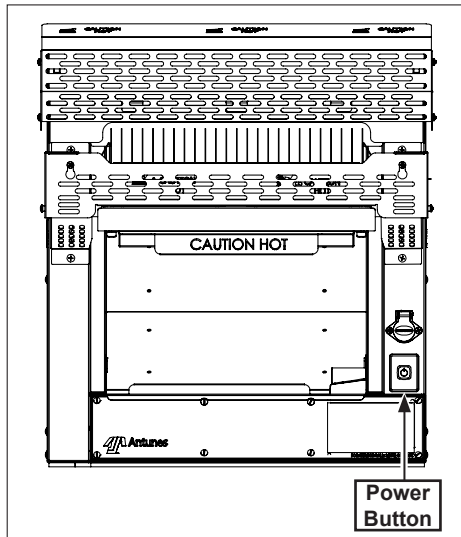
Figure 2. Control Panel

# Operating Instructions

**NOTE:** To ensure proper operation, toast some test product at the start of each day.

OFF is displayed on the screen when the unit is plugged in and powered off.

1. On the front of the toaster, press the power button to turn the toaster on. The unit will make a clicking sound. This is normal.
2. The unit displays the software version and starts to warm up (approximately 20 minutes)
3. The unit displays the "READY" message when it reaches proper operating temperature.



## Toasting Product

1. Facing the front of the unit, insert product as described.

Insert Breads and Muffins in the Feeder with the *cut side up*.

Refer to Figure 3.

## Shutting down the Toaster

Follow these steps to shut down the toaster:

1. Press and hold the Power button.
2. The unit enters cool down mode and displays **Cool Down Time**. The fans continue to run. The unit shuts down completely when this cool down mode completes.

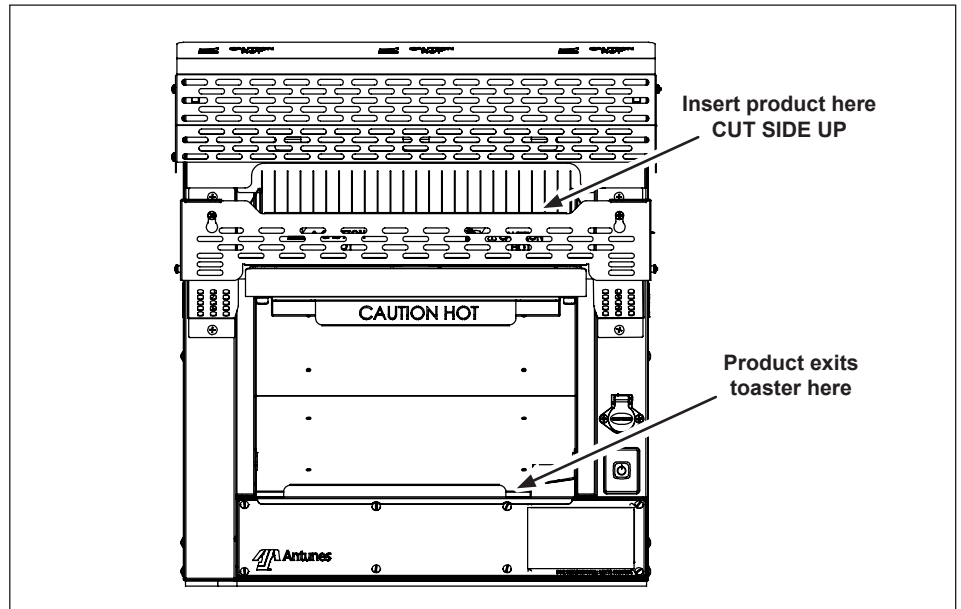


Figure 3. Toasting Product

## Hi-Limit Reset Button

A hi-limit control (rear of unit) turns off power to the unit if it overheats. To reset this Hi-Limit control, allow sufficient time (10-15 minutes) for the unit to cool down, then remove the Hi-Limit control cap and press the reset button located on the rear of the unit. If the unit requires continuous resetting, call for service.

## Error Messages

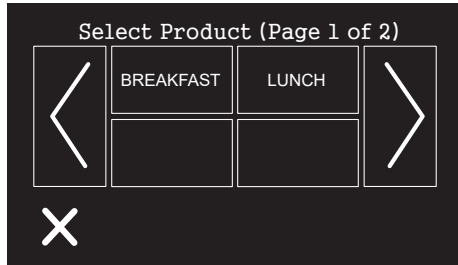
If the toaster encounters an operating error, the unit displays FAULT and beeps. When this happens:

1. The error code will display on the screen. Write down the error code and refer to the Troubleshooting section of this manual.

## Menu Options

### Edit Product Settings

1. Press the Gear Icon
2. Enter password (12345).
3. Select Edit Product button (Defaults: Breakfast & Lunch).



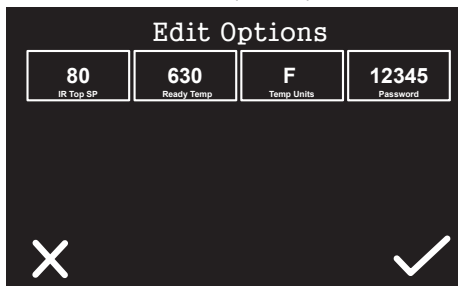
4. Enter Toast Time (in seconds).

### Adding Products

1. Press the Gear Icon.
2. Enter Password (12345).
3. Select "Products".
4. If entering a new product, select from the Empty Boxes.
5. Enter Product Name.
6. Enter Toast Time (in seconds).
7. Press the check mark to complete.
8. Select "Home" to return to the Home screen.

### Edit Settings

1. Press the Gear Icon.
2. Select Edit Settings.
3. Enter Password (12345).



4. To increase heat, select Top IR SP (displayed in percentage).
5. Select Ready Temp to change temperature from Warmup to Ready.
6. Select Temp Units to change between Fahrenheit to Celsius.

## Factory Reset

To reset the unit to original factory setting, follow these steps:

1. From the Home screen, press the Gear Icon.
2. Enter the password provided by Antunes.
3. Select Factory Defaults.
4. Select Reset All. This resets the System Settings, Menu, Clears Errors, and Clears Elapsed.
5. Press the check to save changes. Operation Complete will display on the screen.



6. Press check again to restore default settings.
7. Press Home screen to return to the home menu.

## Maintenance

**WARNING**

The unit will remain hot while it is cooling down. Personal injury and burns may result from touching the unit before it is finished cooling down. Wear Heat Resistant Gloves.

### Cleaning the Accessories and Toaster

1. Turn the toaster off. The fans and conveyors continue to run. The cleaning mode continues for 20 minutes and shuts the unit down automatically when complete.
2. Remove Crumb Tray and set aside.
3. Wash the Crumb Tray in soap and water. Rinse with clean water and allow to air dry.
4. Wipe all surfaces of the unit with a hot damp cloth.

**NOTE:** You do not need to wait for the count down to complete.

5. Wipe the bun landing area and Skirt with a hot damp cloth (Figure 1).

**NOTE:** Do not use a dripping wet cloth. Wring out before use.

## Quarterly Maintenance

Perform the steps in the **Daily Maintenance** section of this manual.

### Inspect Conveyor Belt Chain

Inspect the Conveyor Belt Chain to ensure it is in good condition and is free of damage.

Check the tension on the Conveyor Belt Chain. If the belt is sagging significantly or is dragging on the Crumb Tray Reflector, remove one or two links from the chain. Refer to the section titled **Adding/Removing Conveyor Belt Chain Links** for instructions.

### Measuring Conveyor Belt Chain

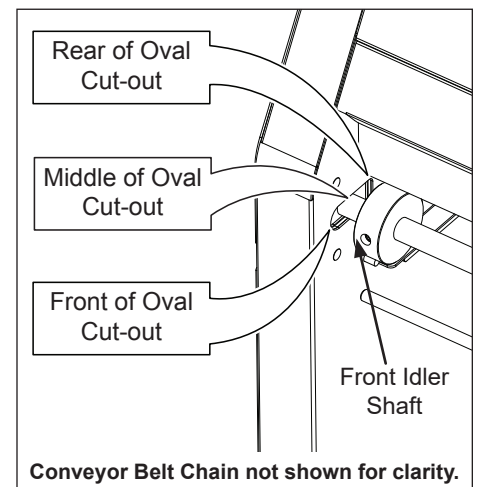
1. Turn the toaster off. The unit enters a 20 minute cool down mode and displays OK to Clean when complete. The fans and conveyors continue to run. The cleaning mode continues for 20 minutes and shuts the unit down automatically when complete.
2. Remove the Crumb Tray.
3. See the image below. Facing the front of the toaster, locate the front Idler Shaft. The Idler Shaft should be in the middle of the oval cut out.

If the shaft is towards the front, remove a link.

If the shaft is towards the back, add a link.

If the shaft is in the middle, no action is needed.

If you need to add or remove a link, refer to the section titled **Adding/Removing Conveyor Belt Chain Links** in this manual.



# Conveyor Belt Chain Maintenance

Links from the Conveyor Belt Chain can be removed or added to keep the Conveyor Belt Chain at the right tension.

1. Turn the toaster off. Unplug the power cord, and allow the unit to cool.
2. Put on heat resistant gloves and remove the Crumb Tray.
3. Push the front of the Conveyor Shaft in and down so it locks into place. This removes tension from the Conveyor Belt Chain. Make sure both sides are locked in the in and down position.
4. Remove or add links as required. See figure 4.
5. Lift the front of the Conveyor up and out to restore tension to the Conveyor Belt Chain.
6. Re-install the Crumb Tray.
7. Plug in the power cord and turn the unit on.

## Replacing the Conveyor Belt Chain.

Before you replace the Conveyor Belt Chain, make a note of how the existing chain is installed. The replacement chain must be installed in the same manner.

**NOTE:** The chain **MUST** be installed with the hooks facing the direction of travel.

1. Turn the toaster off, unplug the power cord and allow the unit to cool.
2. Put on heat resistant gloves and remove the Crumb Tray.
3. Push the front of the Conveyor Shaft in and down so it locks into place. This removes tension from the Conveyor Belt Chain. Make sure both sides are locked in the IN and DOWN position.
4. Disengage the conveyor belt chain from both sides (Figure 4).
5. Remove the Conveyor Belt Chain and discard.
6. Refer to Figure 4 and install the new Conveyor Belt Chain around the sprockets.
7. Install the new Conveyor Belt Chain. The chain **MUST** be installed with the hooks facing the direction of travel.
8. Lift the front of the Conveyor up and out to restore tension to the Conveyor Belt Chain.
9. Re-install the Crumb Tray.
10. Plug in the power cord and turn the unit on.

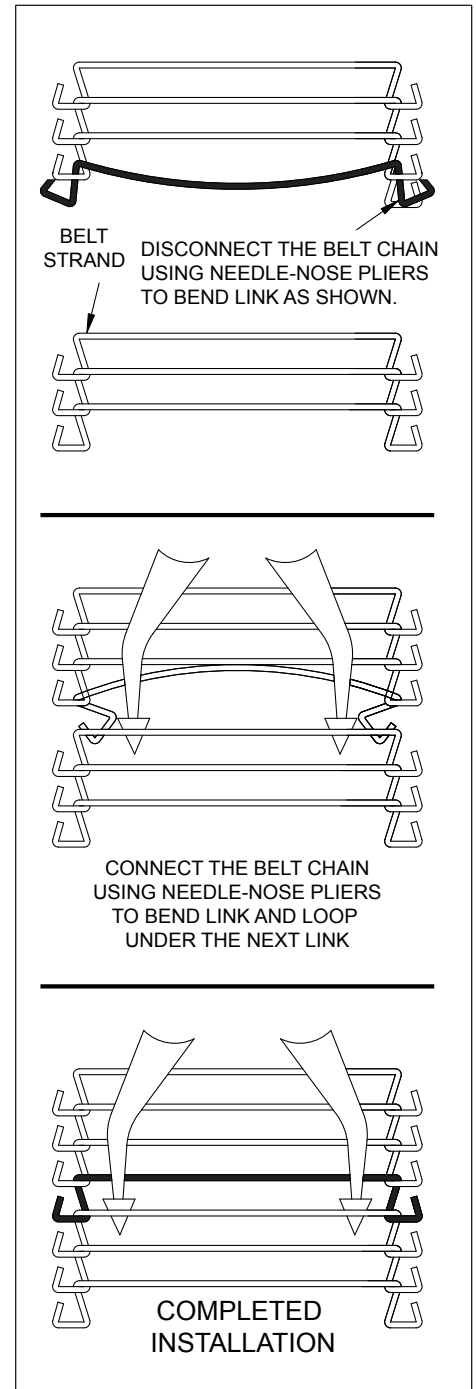


Figure 4. Disconnecting Conveyor Chain

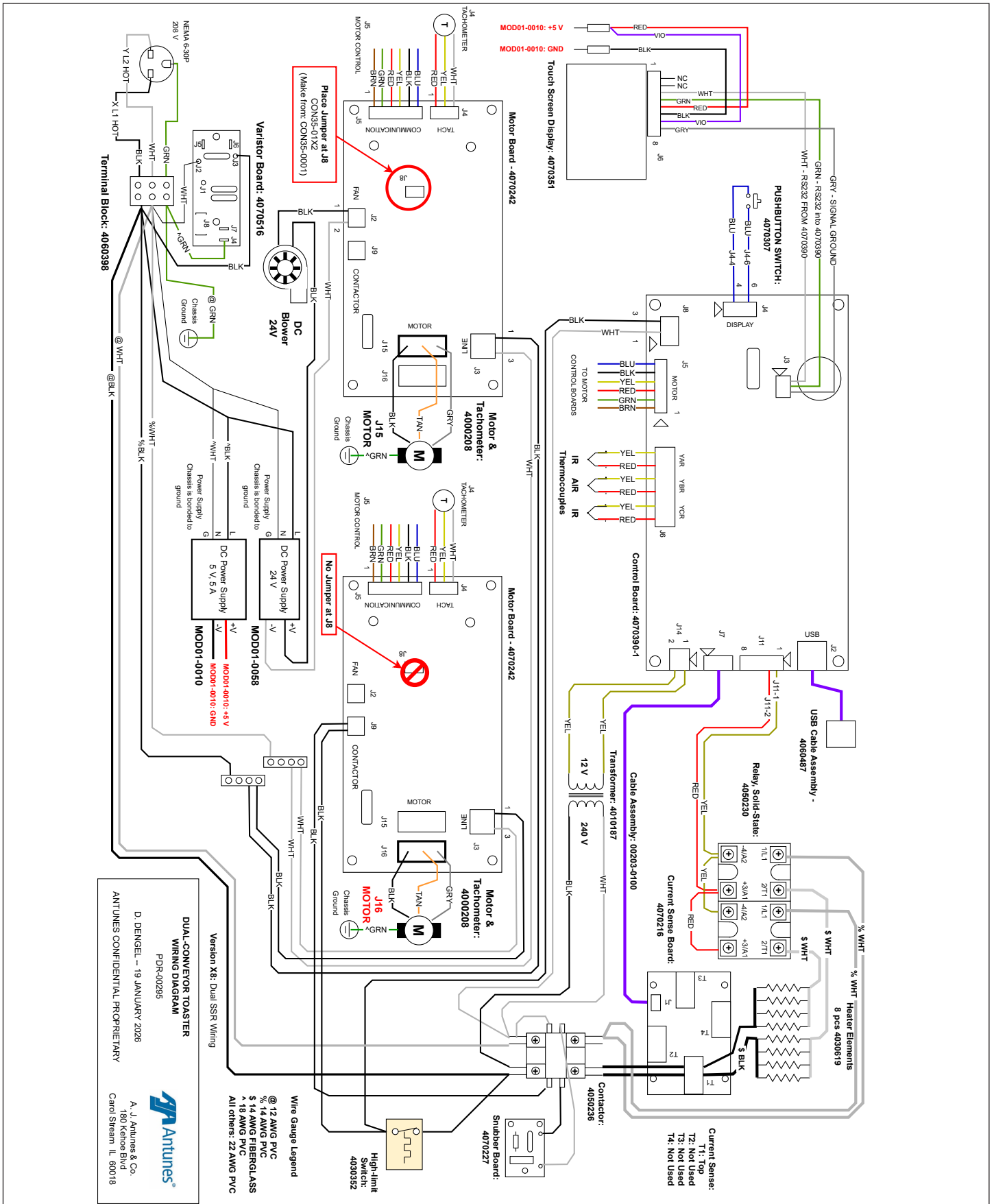
## Troubleshooting

Problem	Possible Cause	Corrective Action
No Control Display	Power cord not plugged in	Plug power cord into the proper electrical outlet
	Hi-Limit has tripped	Allow unit to cool and reset the Hi-Limit Control. If it trips again, contact your Maintenance person or Antunes Technical Support at +1-877-392-7854 (toll free) for assistance.
	Circuit breakers turned off or tripped. Damaged electrical outlet, plug, or cord. Power switch damaged	Reset circuit breakers. If they trip again, check the power cord, plug, and outlet for damage. Contact your Maintenance person or Antunes Technical Support at +1-877-392-7854 (toll free) for assistance.
	Faulty or misaligned communication cable	Replace or align communication cable
	Faulty Transformer	Replace transformer.
Conveyor does not turn on	Conveyor Belt/Chain has stretched. Chain skipping on sprockets.	Measure and adjust the conveyor belt chains as described in the Maintenance section of this manual.
	Loose sprocket	Verify setscrew is tight on flat part of shaft.
	Motor Drive Chain came off sprocket(s)	Reinstall drive chain.
	Internal part /object interfering within conveyor system	Check for interference & clear up as necessary.
	Dive chains need lubrication.	Lubricate chain.
	All Stop Button was pressed	The toaster will beep until the All Stop button is pressed again and the power button is pressed.
Conveyor(s) hesitate	Loose or misaligned sprocket	Align and tighten set screw on sprocket
	Motor drive chain loose or stretched	Replace or tighten up slack on drive chain.
	Drive motor(s) have failed	Contact your Maintenance person or Antunes Technical Support at +1-877-392-7854 (toll free) for assistance.
Product must be forced into the toaster. Buns sticking and burning.	Teflon coated platen dirty.	Clean Platen as described in the Maintenance section of this manual.
	Conveyor Belt/Chains are skipping on sprockets.	Adjust the conveyor belt chains as described in the Maintenance section of this manual.
	Drive motor stalls intermittently.	Contact your Maintenance person or Antunes Technical Support at +1-877-392-7854 (toll free) for assistance.
Toaster making unusual sounds	Conveyor belt chains have stretched or adjusted incorrectly.	Adjust the conveyor belt chains as described in the Maintenance section of this manual.
	Motor Drive chain needs lubrication.	Lubricate chain
	Conveyor shaft bearing is binding.	Contact your Maintenance person or Antunes Technical Support at +1-877-392-7854 (toll free) for assistance.
Fans are making an unusual sounds	Failed cooling Fans	Verify vents on toaster are unblocked and not near other heating appliances. Clean Fans. If error persists contact your maintenance person or Authorized Service Agency for service.
	Cooling Fans are dirty	
Croissants/muffins getting caught in bun chute area	Bun chute installed incorrectly	Reinstall Bun chute with lip end facing down towards exit.
Display reads <b>HI-LIM</b>	Hi-Limit has tripped.	Allow sufficient time (10-15 minutes) for the unit to cool down. Remove the Hi-Limit control cap at the rear of the unit. Press the Hi-Limit Reset button. Turn the unit on and test the unit by toasting some test product. If the Hi-Limit continues to trip, Contact Antunes Technical Support at +1-877-392-7854 (toll free) for assistance.

## Troubleshooting Continued

Problem	Possible Cause	Corrective Action
Display reads <b>M1LOAD</b>	A mechanical obstruction has occurred that is slowing down the conveyor motor.	Check the bottom wire conveyor and surrounding areas for any obstructions/jams. Contact Antunes Technical Service at +1-877-392-7854.
Display reads <b>M2LOAD</b>	Wire Conveyor Belt is too loose/sagging & getting jammed.	If sagging is noticeable, remove the necessary links to shorten the Wire Conveyor Belt. Refer to the Maintenance section in this manual. Contact Antunes Technical Service at +1-877-392-7854.
	Wire Conveyor Belt is broken/damaged and jammed.	Replace the wire belt according to the Maintenance section of this manual. Contact Antunes Technical Service at +1-877-392-7854.
Display Reads <b>TOPTMP</b>	Toaster electrical compartment is overheating due to the lack of airflow surrounding the toaster.	Inspect the cooling at the top and at the bottom (back of unit) and ensure it is clean according to the fan cleaning portion of the Maintenance section of this manual. Make sure the unit has enough space on both sides and the rear of the unit according to the Installation section of this manual. If the condition continues, contact Antunes Technical Service at +1-877-392-7854.
Display Reads <b>CONTMP</b>		
Display Reads <b>M1TEMP</b>		
Display Reads <b>M2TEMP</b>		
Display Reads <b>TOPSSR</b>	Failed Heater or Solid State Relay	Contact Antunes Technical Service at +1-877-392-7854
Display Reads <b>BOTSSR</b>		
Display Reads <b>CONSSR</b>		
Display Reads <b>TOPHTR</b>		
Display Reads <b>BOTHTR</b>		
Display Reads <b>CONHTR</b>		
Display Reads <b>TOPTC</b>	Upper I/R Thermocouple faulty	
Display Reads <b>CONVTC</b>		
Display Reads <b>TOPTMP</b>		
Display Reads <b>CONTMP</b>		
Display Reads <b>CONFAN</b>	Top thermocouple temp greater than 225°	Check top cooling fan for obstruction or, if dirty, clean.

# Wiring Diagram



# Replacement Parts

## Parts List

(See Exploded Views for more information)

<b>NOTE</b>
Use only genuine Antunes replacement parts in this unit. Use of parts other than those supplied by the manufacturer will void the warranty.

Item #	Part #	Description	Qty.
1	0016068	Centrifugal Gan And Wireset Assy	1
2	0016071	Motor Board Assy End Side	1
3	0016319	Display Cover Assy	1
4	0016359	Motor Sprocket Assembly, Right Side	1
5	0026143	Wmnt, Fan Cover	1
6	0026256	Wmnt, Insulation End Wall	1
7	0026143	Wmnt, Fan Cover	1
8	0026256	Wmnt, Insulation End Wall	1
9	0026257	Wmnt, Ctrl Insulation Wall	1
10	0026270	Wmnt, Top Cover	1
11	0026307	Weldment, Tube & Roller	1
12	0026308	Wmnt, Idler Shaft	1
13	0026309	Wmnt, Drive Shaft	2
14	0026335	Wmnt, Crumb Tray	1
15	0026337	Wmnt, Display Housing	1
16	0026338	Weldment, Con.L Housing	1
17	0026342	Dual Bearing Assembly	1
18	0026348	Weldment, Probe Bracket, Ctl Hsg	2
19	0026349	Heat Guard Assembly	1
20	0209344	Gasket, Front	2
21	0209346	Gasket, Base 3.00"Lg	3
22	0209347	Gasket, Base 17.90"Lg	1
23	0209348	Gasket, Base 14.15"Lg	2
24	0209353	Gasket, Base 15.92"Lg	1
25	0209354	Gasket, Front	2
26	0400290	Insulator, Electrical	2
27	0400361	Insulator	4
28	0400712	Mica Insulation, Hi-Limit	2
29	0400713	Mica Insulation, Pcb	1
30	0406560	Insulation, Thermocouple	1
31	0500464	Bearing Retainer	3
32	0504083	Guard, Hi-Limit	1
33	0507230	Curtain Retainer Bracket	6
34	0515432	Bracket, Motor	2
35	0515860	Roller/Idler	2
36	0515861	Bkt, Bearing	1
37	0516130	Bracket, Motor	1
38	0516146	Plate, Spacer, Rh	1
39	0516149	Contacto Mtg Bracket	1
40	0516156	Air Cover- Rh	1
41	0516157	Centrifugal Fan, Channel	1

Item #	Part #	Description	Qty.
42	0516159	Fan Chute	1
43	0516170	Panel, Rear	1
44	0516176	Bracket, Tensioner, Lh	1
45	0516177	Bracket, Tensioner, Rh	1
46	0516178	Plate, Spacer, Lh	1
47	0516195	Spring Guide	2
48	0516197	Sprocket, Sheet Metal	4
49	0516274	Roller/Idler	2
50	0516555	Plate Strain Relief	1
51	0516561	Housing, Insulation End	1
52	0516562	Support, Crumb Tray	1
53	0516563	Housing, Insulation Ctrl	1
54	0516564	Cover, Conv. End Hsg	1
55	0516565	Cover, Conv. End Hsg	1
56	0516585	Heat Shield	1
57	0516601	Top Cover	1
58	0516642	Heater Stopper	2
59	0516660	Cover, Ctrl	2
60	0516661	Insulation, Cover	1
61	0516662	End Housing	1
62	0516695	Support, Crumb Tray	1
63	0516707	Bkt, Support	1
64	0516715	Heat, Guard	1
65	0516717	Heat Guard, Cover	1
66	0516723	Support, Crumb Tray Lh	1
67	0516730	Front Shaft Spacer	1
68	0516734	Heat Reflector Bottom	1
69	0516765	Support Front	1
70	0516766	Crumb Tray	1
71	0516770	Cover, Display Hsg	1
72	0516771	Cover, Display	1
73	0516772	Hsg, Display	1
74	0516773	Control Housing	1
75	0516780	Heater Channel	1
76	0516783	Drive Shaft Guard	1
77	0516784	Support Plate	1
78	0516789	Bracket, Thermocouple, Ctl Hsg	2
79	0516794	Heat Guard, Cover	1
80	0516797	Tray, Holding	1
81	0516799	Washer, Thermo. Tube	2
82	0516805	Retainer, Curtain	1
83	0516810	Bracket, Thermocouple, Ctl Hsg	2
84	0516811	Heat Reflector Top	1
85	0600158	Spring, Roller Tension	2
86	0701185	Rt-2H Wireset	1
87	0702308	Tim Horton Display Cable	1
88	0702311	Hrt-T2 Motor Comm Cable	1
89	0702313	Blower Tim Hortons Wire Set	1
90	0800525	Rod, 1/4 X 12.5 Inch	4
91	0808569	Belt, Wire Flat-Flex	2

# Replacement Parts

## Parts List Continued

(See Exploded Views for more information)

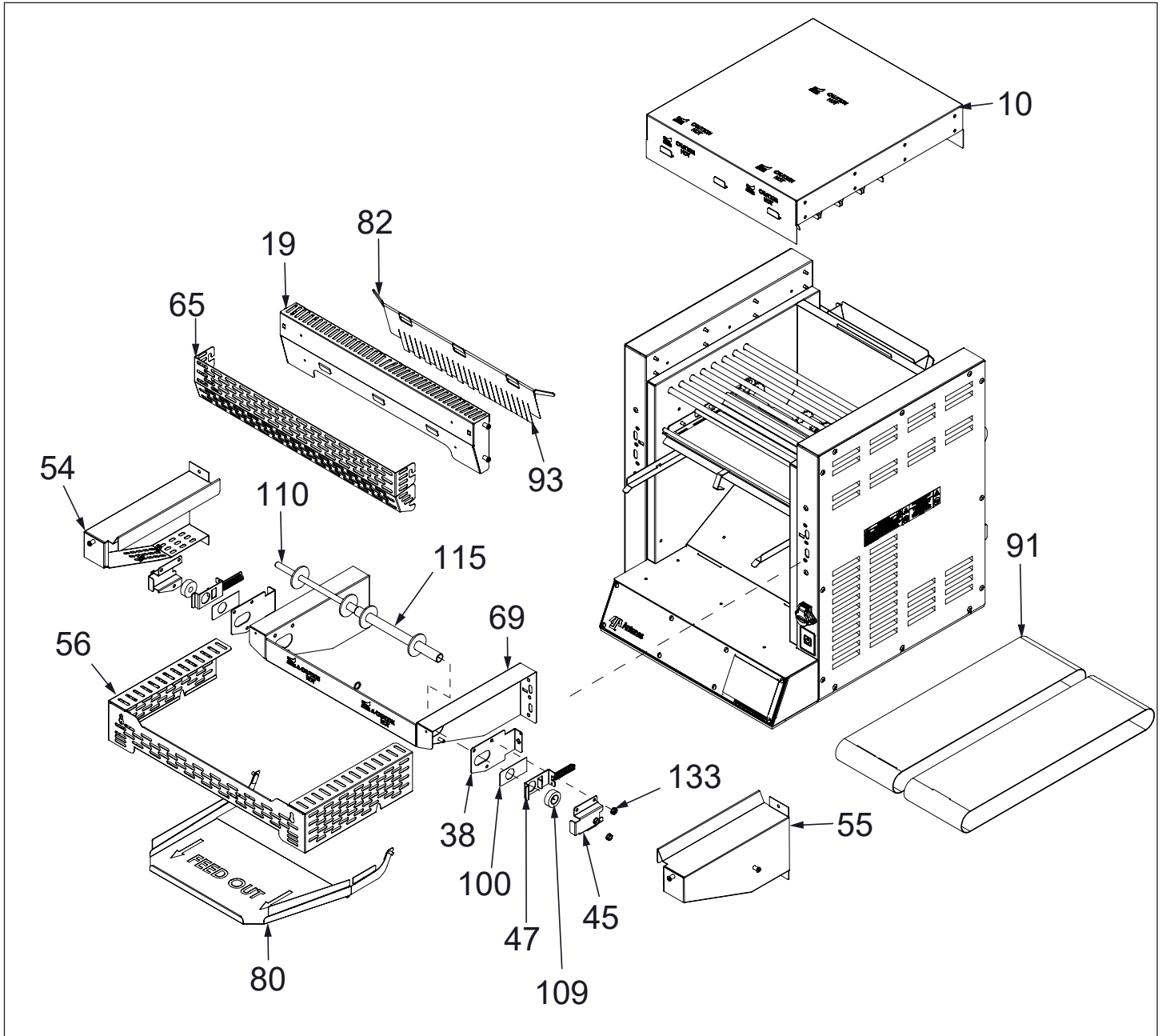
<b>NOTE</b>
Use only genuine Antunes replacement parts in this unit. Use of parts other than those supplied by the manufacturer will void the warranty.

Item #	Part #	Description	Qty.
92	0808573	Link Set, Wire Belt Splicing	4
93	0900552	Curtain, Front	1
94	1000900	Label - Warning	3
95	1001213	Label, Shock Hazard	3
96	1004067	Label, Control	1
97	1004068	Label, Switch	1
98	1004071	Label, Wiring Diagram Dual-Conveyor Toaster	1
99	2000907	Tube, Probe	2
100	2100488	Thrust Strip, Teflon	2
101	2100538	5/32" L. Nylon Spacer	4
102	2110197	Clip, Steel Cable	2
103	2120143	Spacer	5
104	2120153	Spacer, .25" Od X .38"Lg #8 Screw	14
105	2120223	Sleeve Bearing, .50" Od X .75" Lg	1
106	2150251	Sprocket, 25B14 3/8 Bore	2
107	2150260	Spacer, Bearing	2
108	2150295	Sprocket, 25B28 .395" Bore	2
109	2152067	Bearing, 5/8Id X 1-1/8Od	1
110	2152791	Shaft, Idler	1
111	2152796	Bearing, 3/8" Id X 1-1/8" Od	3
112	2152815	Bearing, Sleeve	2
113	2152816	Tube, Rear Ctl Hsg Side	1
114	2152829	Chain, Drive	2
115	2152861	Tube, Front Ctl Hsg Side	1
116	2152862	Shaft, Drive	2
117	3000117	Washer, Retainer	7
118	3000142	Ring, Retaining 3/8	4
119	3020123	Nut, Hex 2-56 Undersized	4
120	3040105	Nut, Hex 'Keps' #4-40 Zinc	15
121	3040180	Standoff, #4-40 X .625 White Plastic	5
122	3060104	Screw, Mach. #6-32 X 1/4"	8
123	3060105	Screw, Mach. #6-32 X 1/2"	2
124	3060130	Nut, Hex "Keps" #06-32 Steel; Zinc Plated	11
125	3080105	Screw, Mach #8-32 X 1/2"	3
126	3080124	8-32 X .5 Lg Round Hd. One-Way	1
127	3080142	Washer, Flat #8	2
128	3080143	Nut, Hex 'Keps' #8-32	18
129	3080157	Screw, #8-32 X 3/8" Lg Phtrshd	43
130	3080183	Screw, Hex Head 'Sems' #8-32 X 3/8"	8

Item #	Part #	Description	Qty.
131	3080194	Screw #8-32 X 3/4, Pan Hd. Phil. St. Stl	12
132	3080203	Screw #8-32 X 3/8 With Int. Tooth Washer	77
133	3100146	Nut, Hex "Keps" #10-32	27
134	3100178	Screw, Hex Bolt #10-32 X 3/8"	8
135	3250212	Set Screw, 1/4-28 Unf-Sa X 3/8"	2
136	4000186	Motor, 230V	2
137	4000217	Motor, 230V	2
138	4000369	Centrifugal Fan - 24V Vdc	1
139	4010187	Transformer, 240 V/12Vac	1
140	4030352	Thermostat, Hi-Limit 700F	1
141	4030619	Heating Element 600W/208V	8
142	4050180	Heat Sink	2
143	4050230	Relay, Solid State - 50A	2
144	4050236	Contact, 2 Pole Normally Open	1
145	4051029	Thermocouple, Probe	1
146	4058407	Thermocouple, Probe	1
147	4060173	Cable Tie(.100X4-3/16)	4
148	4060374	Grounding Lug	1
149	4060398	Terminal Block, S-Series	1
150	4060487	Usb	1
151	4070156	Varistor Board	1
152	4070216	Assembly, Pcb - Current Sense Board	1
153	4070227	Snubber Board	1
154	00203-0100	Cable Assy, 22"	1
155	4070351-2	Asy-Pcb, Display (Blast-Fhs)	1
156	4070390-2	"Asy-Pcb, Rt-2H, Control Board (Bk)"	1
157	MOD01-0010	Module, Power Supply, Ac/Dc 5V	1
158	MOD01-0058	Module, Power Supply, Ac/Dc 24V	1
159	PCB00-0459	Pcb - Bare Board	1
160	0406559		

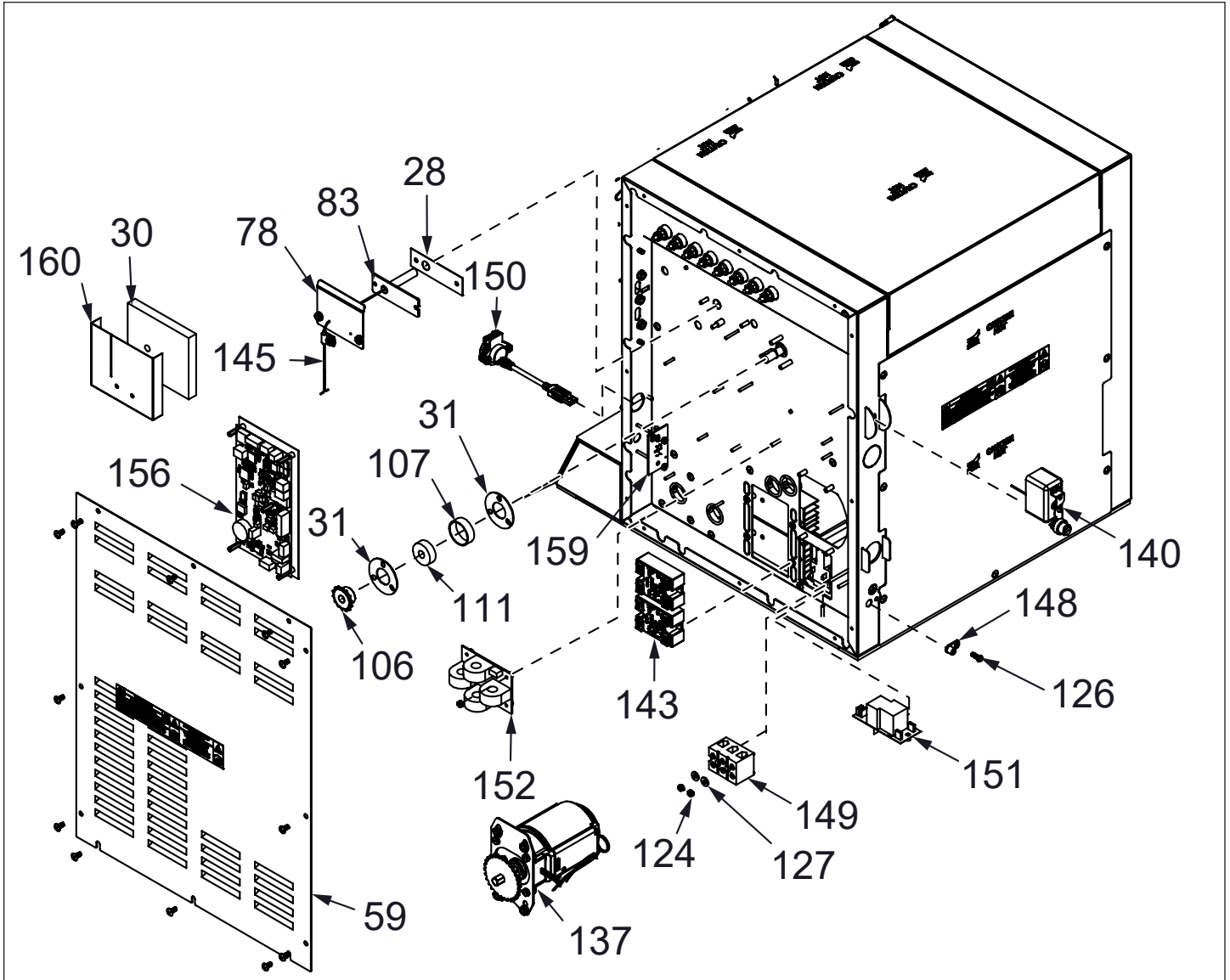
# Replacement Parts

## Exploded Diagram 1



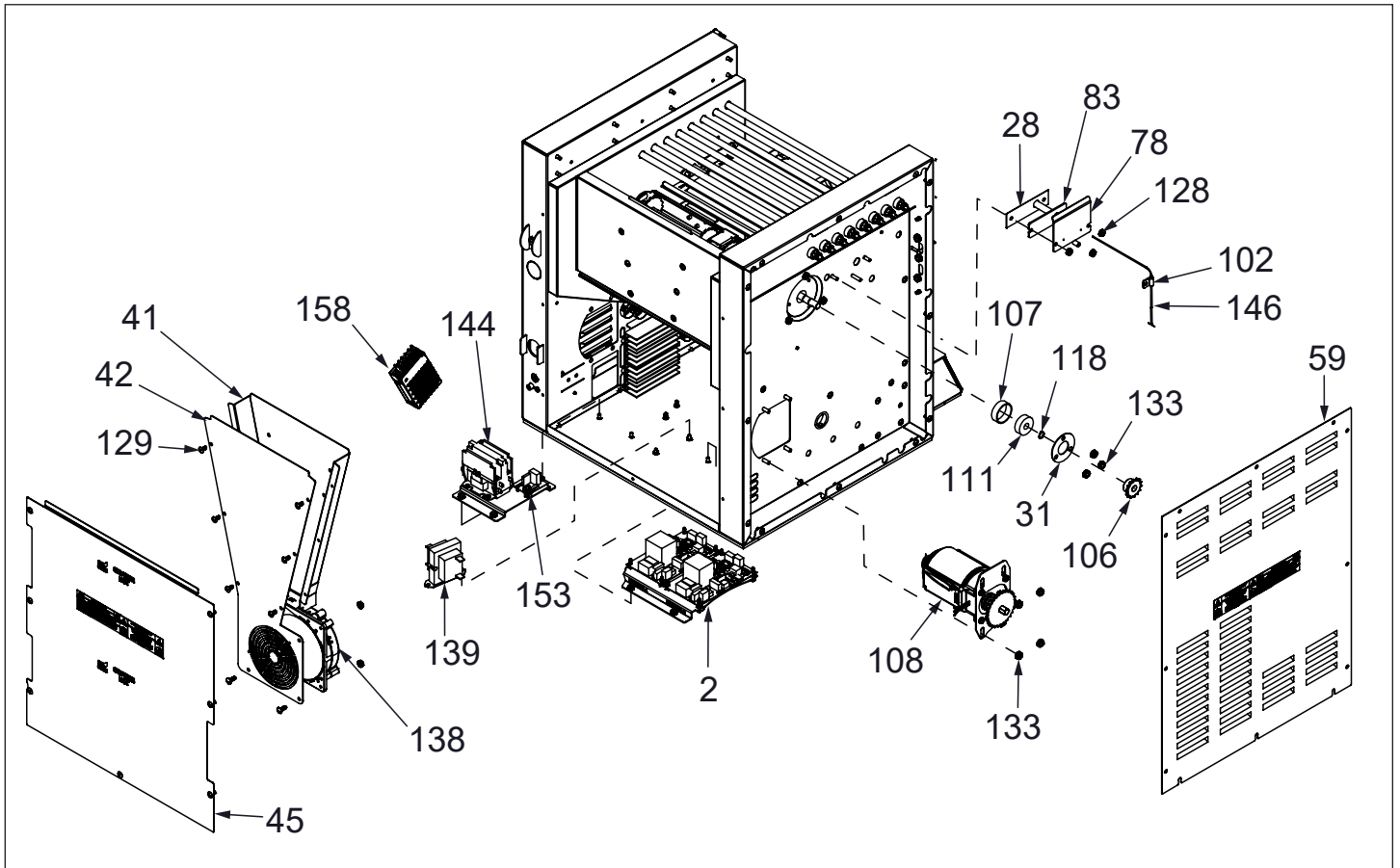
# Replacement Parts

## Exploded Diagram 2



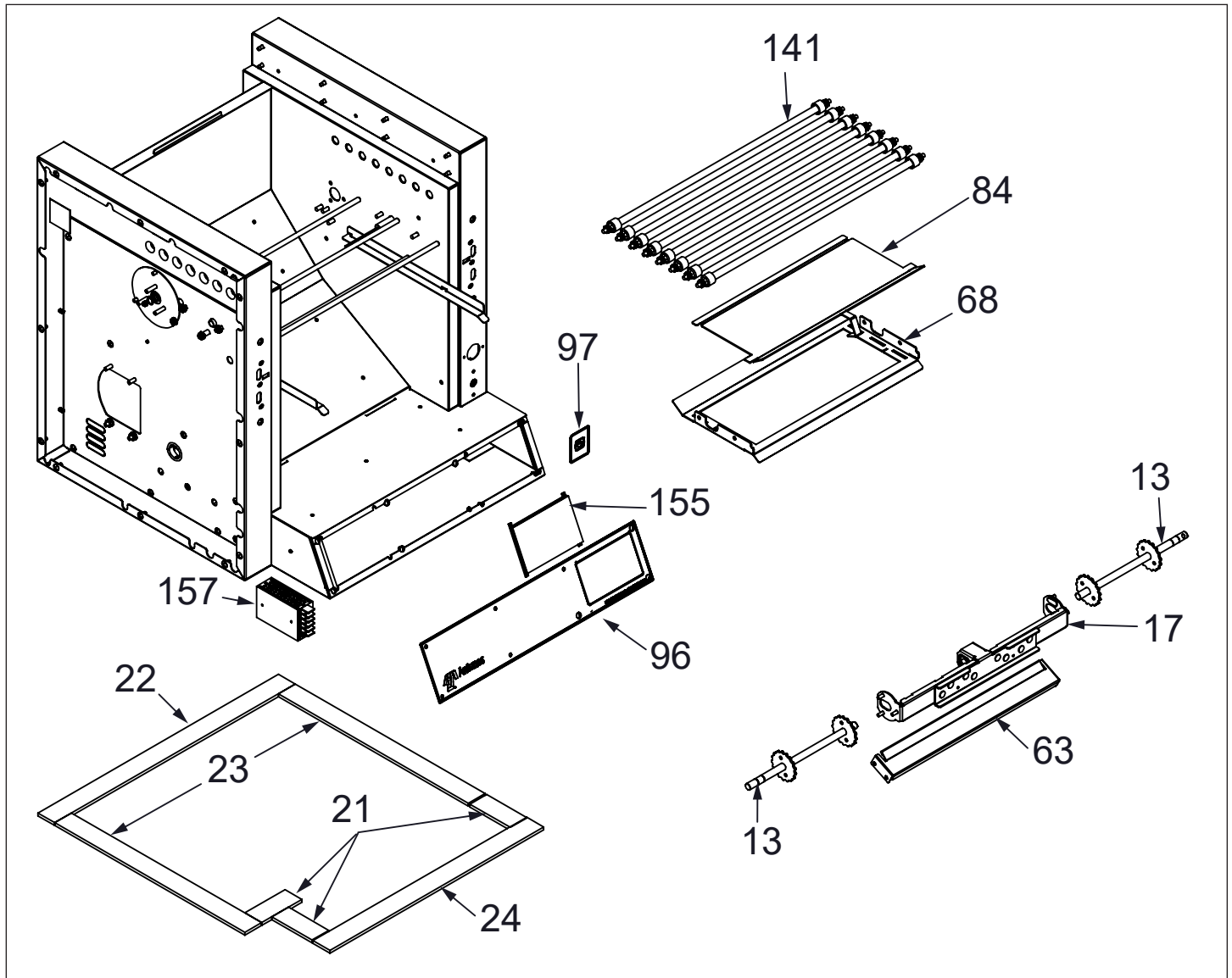
# Replacement Parts

## Exploded Diagram 3



# Replacement Parts

## Exploded Diagram 4







## Limited Warranty

Equipment manufactured by Antunes has been constructed of the finest materials available and manufactured to high quality standards. These units are warranted to be free from electrical and mechanical defects for a period of two (2) years from date of purchase under normal use and service, and when installed in accordance with manufacturer's recommendations. To insure continued operation of the units, follow the maintenance procedures outlined in the Owner's Manual. During the first 12 months, electromechanical parts, non-overtime labor, and travel expenses up to 2 hours (100 miles/160 km), round trip from the nearest Authorized Service Center are covered. During the second year of this warranty (months 12 - 24), the following items are covered by a Part Only warranty: Drive Motor, Motor Board, Current Sense Board, Display Board, and Main Board.

1. This warranty does not cover cost of installation, defects caused by improper storage or handling prior to placing of the Equipment. This warranty does not cover overtime charges or work done by unauthorized service agencies or personnel. This warranty does not cover normal maintenance, calibration, or regular adjustments as specified in operating and maintenance instructions of this manual, and/or labor involved in moving adjacent objects to gain access to the equipment. This warranty does not cover consumable/wear items such as Release Sheets, Conveyor Belt Chain Link removal, Belt Wraps, and Dampers. This warranty does not cover damage to the Platen due to operating the toaster without a Release Sheet or cleaning with abrasive cleansers or tools, misuse or dropping of unit. This warranty does not cover problems or failures resulting from improper/incorrect voltage supply. This warranty does not cover Travel Time & Mileage in excess of 2 hours (100 miles/160 km) round trip from the nearest authorized service agency.
2. Antunes reserves the right to make changes in design or add any improvements on any product. The right is always reserved to modify equipment because of factors beyond our control and government regulations. Changes to update equipment do not constitute a warranty charge.
3. If shipment is damaged in transit, the purchaser should make a claim directly upon the carrier. Careful inspection should be made of the shipment as soon as it arrives and visible damage should be noted upon the carrier's receipt. Damage should be reported to the carrier. This damage is not covered under this warranty.
4. Warranty charges do not include freight or foreign, excise, municipal or other sales or use taxes. All such freight and taxes are the responsibility of the purchaser.
5. This warranty is exclusive and is in lieu of all other warranties, expressed or implied, including any implied warranty or merchantability or fitness for a particular purpose, each of which is hereby expressly disclaimed. The remedies described above are exclusive and in no event shall roundup be liable for special consequential or incidental damages for the breach or delay in performance of this warranty.



**Corporate Headquarters**  
Carol Stream, IL, USA  
Phone: +1.630.784.1000  
Toll Free: +1.800.253.2991  
Fax: + 1.(630).784-1650

**China Facility**  
Suzhou, China  
Phone: +84.512.6841.3637  
Fax: +86.512.6841.3907

**India Facility**  
Chennai, India  
Phone: +91.44.25532212  
Fax: +91.44.25532415