

Tortilla Warmer

Model TW-100 Owner's Manual

Manufacturing Number
9800208

Safety Information

Installation

- Read and understand all instructions before installing or using the unit.
- Install this unit to comply with the basic plumbing code of the Building Officials and Code Administrators, Inc. (BOCA) and the Food Service Sanitation Manual of the Food and Drug Administration (FDA).
- Install and locate the equipment only for its intended use as described in this manual.

WARNING

Due to the weight of the unit, two people are needed for installation. **Do not attempt to install the unit without the use of two people.**

WARNING

ELECTRICAL SHOCK HAZARD.
Failure to follow the instructions in this manual could result in serious injury or death.

Do not modify the power supply cord plug. If it does not fit the outlet, have a proper outlet installed by a qualified electrician.

Electrical ground is required on this appliance.

Check with a qualified electrician if you are unsure if the appliance is properly grounded.

Do NOT use an extension cord with this product.

The unit should be grounded according to local electrical codes to prevent the possibility of electrical shock. It requires a grounded receptacle with separate electrical lines, protected by fuses or circuit breaker of the proper rating.

NEVER unplug the power cord while the unit is running. Use the proper shutdown procedure before unplugging the power cord.

Operation

- The unit is furnished with a properly grounded cord connector. Do not attempt to defeat the grounded connector.
- Do not operate the unit if it has been damaged or dropped, if it has a damaged cord or plug, or if it is not working properly.
- Do not block or cover any openings on the equipment.
- Do not immerse the cord, unit, or plug in water.
- Keep the cord away from heated surfaces.
- Do not allow the cord to hang over the edge of a table or counter.
- This appliance is not to be used by persons (including children) with reduced physical, sensory or mental capabilities, or lack of experience and knowledge unless they have been given supervision or instruction.
- Children being supervised are not to play with the appliance.
- Bread may burn. Therefore toasters must not be used near or below curtains or other combustible walls and materials. Failure to maintain safe operating distances may cause discoloration or combustion.
- Start/Stop Buttons: The stop button DOES NOT break the connection from the mains. The main power connector at the apparatus must remain accessible.
- Mains Disconnect: The plug shall remain readily operable. For installation where plug is not accessible, an all-pole mainis switch with a contact separation of at least 3 mm in each pole shall be incorporated into the electrical installation.

Maintenance

- Do not use abrasive materials; they can damage the unit's stainless steel finish.
- Do not use corrosive chemicals in this equipment.
- Chlorides or phosphates in cleaning agents (e.g., bleach, sanitizers, degreasers, and detergents) can permanently damage stainless steel equipment. The damage is usually in the form of discoloration, dulling of the metal surface finish, pits, voids, holes, or cracks. This damage is permanent and is not covered by warranty.
- Always use a soft, damp cloth for cleaning. Rinse with clear water and wipe dry. When required, always rub in the direction of metal polish lines.
- Routine cleaning should be performed daily with soap and water.
- Rub off finger marks and smears using soap and water.
- Do not clean unit or components in a dishwasher unless specifically specified in the cleaning instructions.
- Do not clean the unit with a water jet or steam cleaner.
- Never apply coatings to the warming surfaces. Platens must be dry when not in use.
- Do not remove the covers or the control panel.

Service

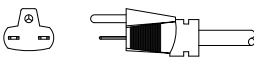
- Inspection, testing, and repair of electrical equipment must be performed only by qualified service personnel.
- To avoid possible personal injury and/or damage to the unit, all inspections, tests, and repair of electrical equipment should be performed by qualified personnel ONLY. Contact Antunes Technical Service for adjustment or repair.
- Turn the power off, unplug the power cord, and allow unit to cool to room temperature before performing any service or maintenance.
- If the supply cord is damaged, it must be replaced by the manufacturer, its service agent, or a similarly qualified person in order to avoid an electrical hazard.
- Cleaning and user maintenance shall not be made by children without supervision.

Specifications

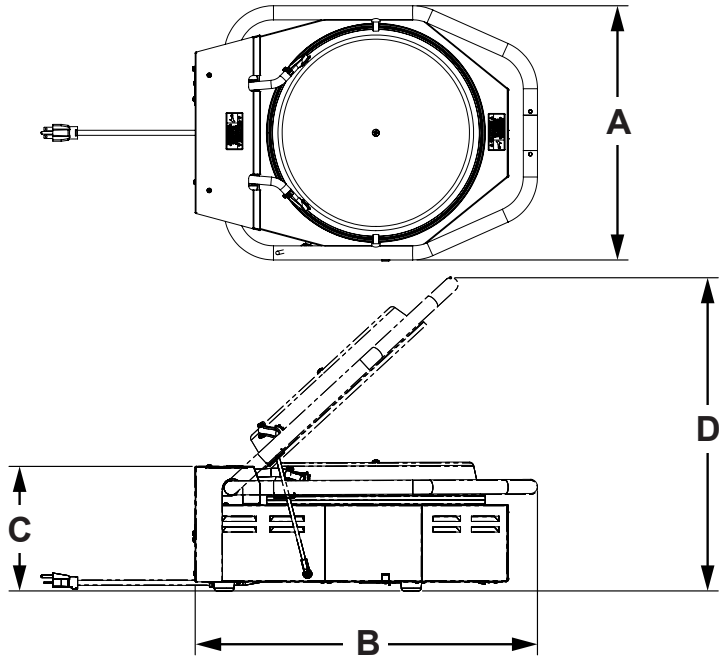
Electrical Ratings

Model & Mfg. No.	Volts	Watts	Amp	Hertz
TW-100 9800208	208/240	1800	7.5A	50/60

Electrical Cord & Plug Configurations

Model & Mfg. No.	Description	Configuration
TW-100 9800208	NEMA 6-15P, 250 Volts, 15 Amps	

Dimensions



Model & Mfg. No.	Width (A)	Depth (B)	Height (C)	Height Open (D)
TW-100 9800208	18" (46 cm)	24" (60 cm)	8" (20 cm)	20" (51 cm)

Installation

Unpacking

1. Using two people, remove unit and all packing materials from the shipping carton. If any parts are missing or damaged, contact Antunes Customer Service IMMEDIATELY at +1-877-392-7856 (toll free).
2. Remove the information packet.
3. Remove all packing materials and protective coverings.

NOTE: Do not tip the warmer, as the unit will spring open and become unstable.

4. Wipe all surfaces of the unit with a hot damp cloth. Do NOT use a dripping wet cloth. Wring it out before use.
5. Clean the accessories in hot, soapy water. Rinse in clear water and allow to air dry.
6. Reassemble the unit.
7. The unit must be level before use.
8. Attach the power cord to a grounded receptacle.

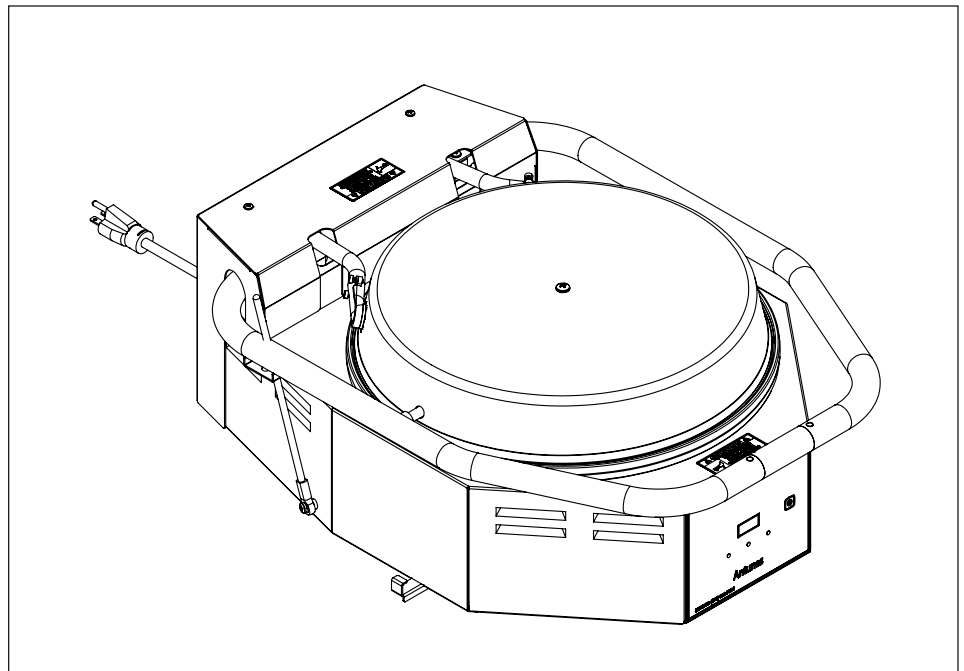


Figure 1. Tortilla Warmer

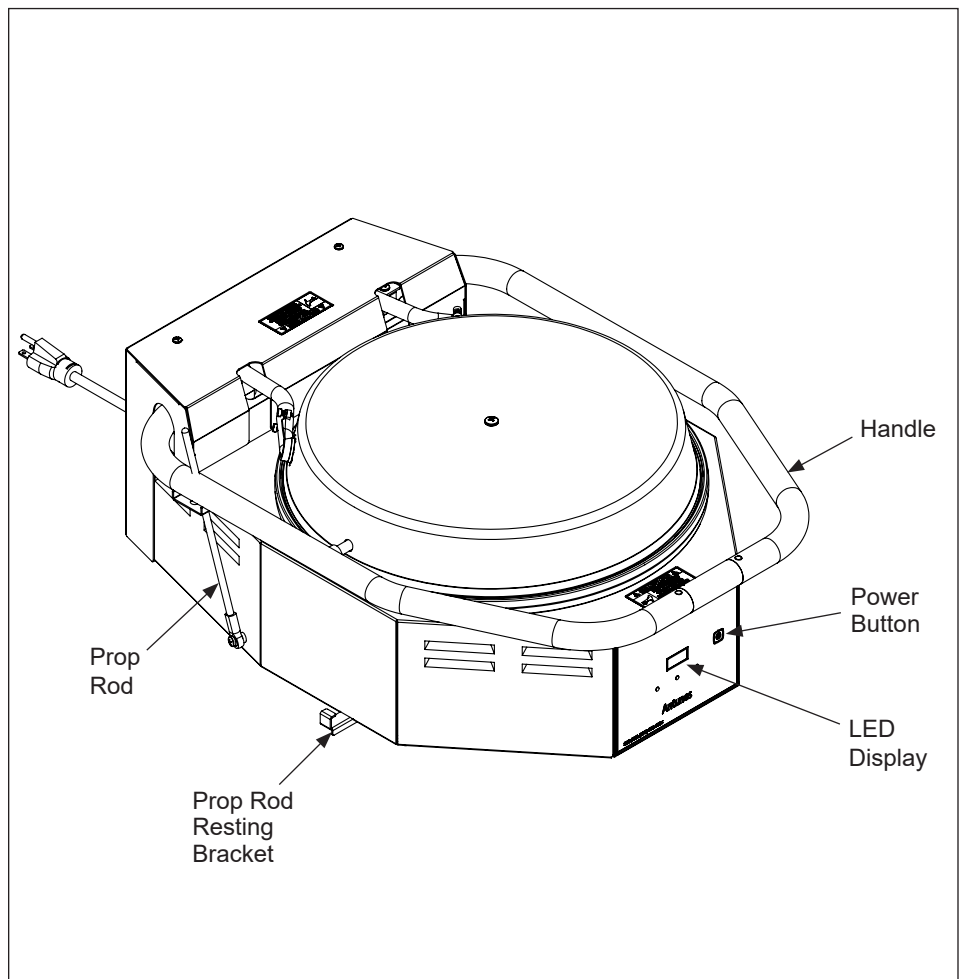


Figure 2. Components

Controls

The following controls and indicators are available on the control panel:

1. Power Button

- Powers the unit on. Push and hold power button for at least 2 seconds to power on or off the unit.

2. LED Display

- Shows the current status of the Tortilla Warmer.
- Error messages will be displayed on the LED Display. See the Troubleshooting section or contact Antunes for further instructions if error messages appear.

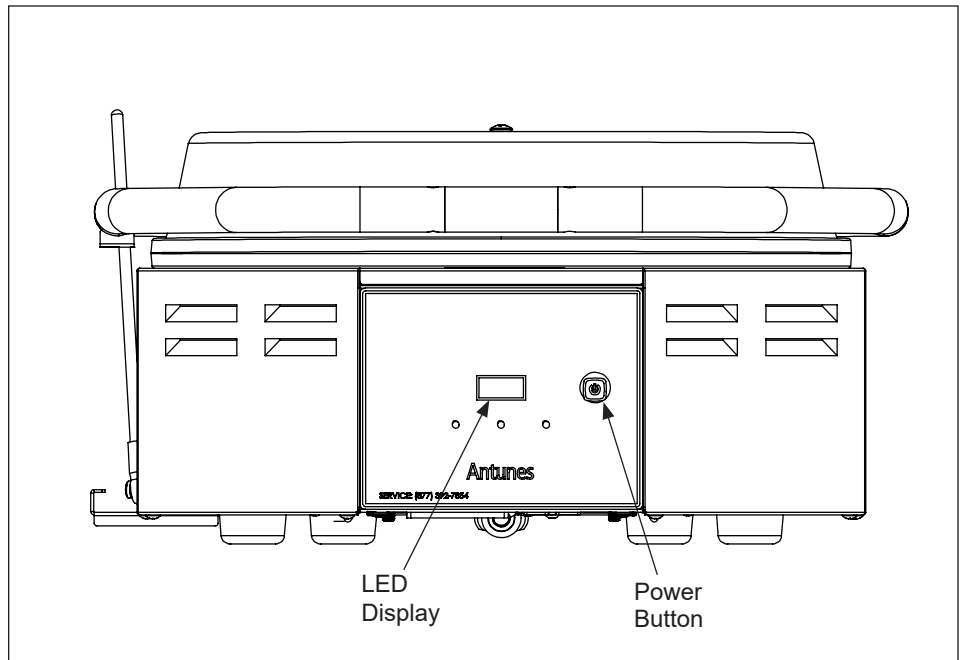


Figure 3. Controls

Operating Instructions

Cooking Procedure



WARNING

This device is to be used only to warm tortillas, it is not to be used for cooking foods or for any other purpose.



WARNING

To avoid personal injury, please follow these instructions.

NOTE: Touch only the tortilla to avoid contact with heating platens, and do not allow hands or skin to make contact with the heating platens.

NOTE: Do not release grip on the handle while the warmer is in the open position.

1. Press and hold the power button for at least 2 seconds. The display will read 'LO' while warming to temperature. Once the display shows 'USE', the unit is at temperature and ready for use.
2. Grip handle firmly with one hand while opening, keeping open, holding, or closing warmer.
3. Use other hand to place tortilla(s) onto and to remove tortilla(s) from the warmer.

Maintenance

WARNING

Turn the power off, unplug the power cord, and allow the unit to cool to room temperature before performing any service or maintenance. Do not attempt to clean the unit at temperatures over 220° F/ 100° C to avoid personal injuries and warpage to the heater surface.

WARNING

Never immerse or pour water over the Tortilla Warmer. Do not clean Tortilla Warmer with a water jet.

CAUTION

Chlorides or phosphates in cleaning agents (e.g., bleach, sanitizers, degreasers, or detergents) can cause permanent damage to stainless steel equipment. The damage is usually in the form of discoloration, dulling of metal surface finish, pits, voids, holes, or cracks. This damage is permanent and is not covered by warranty. Follow these tips for maintenance of stainless steel equipment:

- Use a soft, damp cloth for cleaning, rinse with clear water, and wipe dry. Always rub in the direction of metal polish lines.
- Only use approved cleansers.
- Finger marks and smears should be removed using soap and water.
- Do NOT use a metal scraper on grill surfaces
- Do NOT wash any components of the unit in a dishwasher. Hand wash ONLY in a three-compartment sink.

CAUTION

Grill surfaces will be hot. Extreme care must be taken when operating or cleaning this unit. Use heat-resistant gloves when necessary.

Daily Cleaning

1. Power the unit off to begin cooling and wait until the display shows "CLN". Unplug the power cord and proceed.
2. Using a damp soapy wash cloth, wipe down the edges, the entire handle, top of the lid, and the base of the press.
3. Wash the platens. Use a tightly wrung towel dipped in detergent to wipe the interior platens.

NOTE: Never use steel wool or scouring powder as these will damage the cooking surface.

4. Wash the exterior. Use a tightly wrung towel dipped in detergent to wipe the edges, the entire handle, the kickstand, top of the lid, and the base of the press.
5. With a damp (clean water only) tightly wrung towel, wipe all of the same surfaces that were washed in steps 4-5.
6. With a new clean towel, dip into the quat sanitizer solution. Use this towel to wipe all of the same surfaces that were washed in steps 4-5.

NOTE: Do not use any chemicals, grill bricks, or stainless steel scrub pads to clean the tortilla press.

Spills

1. If any food items other than tortillas are dropped on the warming surfaces, wipe them up immediately with a clean damp cloth.
2. If plastic film touches and melts on the warming surface, remove it immediately with a high temperature plastic spatula.
3. Wipe clean with a damp sanitary towel. Always dry platens after use.

Seasoning the Unit

Daily, After Cleaning and Before Open

1. Turn on the press.
2. Fold a burrito-sized tortilla in half twice and wait for the machine to heat up. Wait for the display to read "USE".
3. Wipe the entire surface of the top and bottom plates of the press with the folded tortilla.
4. Discard the tortilla.

NOTE: Do not use oil or chemicals to season the press. Do not leave the tortilla in the press.

Troubleshooting

Error Codes

This section describes the error codes that may appear on the display.

NOTE: For the errors below, attempt to turn the unit off and turn it back on again to see if the problem is fixed. If the problem persists, contact Antunes Technical Service at +1-877-392-7854 (toll free) for assistance.

Error Code	Error	Description	Action
'2'	ZERO CROSS	Internal control board error	Cycle Power OFF Unplug unit for 30 seconds Cycle Power ON . If message persists, contact Antunes Technical Support at +1-877-392-7854 (toll free) for assistance.
'6'	MEMORY	Memory chip error.	
'105'	OVER TEMP	Temperature on Top Platen is 25°F over Set Point Temperature.	
106	OVER TEMP	Temperature on Bottom Platen is 25°F over Set Point Temperature.	
'111'	UNDER TEMP	Top Platen drops 100°F below Set Point Temperature when in USE state.	
112	UNDER TEMP	Bottom Platen drops 100°F below Set Point Temperature when in USE state.	
'135'	WARMUP TIME	Top Platen is taking too long to warm-up.	
136	WARMUP TIME	Bottom Platen is taking too long to warm-up.	
'5'	I2C TIMEOUT	Control board hardware failure.	Power cycle the unit. If error persists, contact Antunes Technical Service at + 1-877-392-7854.
'9'	BOARD TEMPERATURE	Internal air temperature of unit is too high and the system is powering down to prevent damage.	Check for vent blockages and adequate spacing for ventilation around unit. Contact Antunes Technical Service at + 1-877-392-7854
'101'	HI-LIMIT	Hi-Limit is triggered.	Allow sufficient time (10-15 minutes) for the unit to cool down. Remove the Hi-Limit control cap at the rear of the unit. Press the Hi-Limit Reset button. Turn the unit on and test the unit. If the Hi-Limit continues to trip, contact Antunes Technical Service at +1-877-392-7854 for assistance.
'117'	OPEN PROBE ON TOP PLATEN	Thermocouple connection is open on Platen.	Re-secure the Platen Thermocouple connection to the proper Control Board. If the Control Display still reads "Open Probe" If message persists, contact Antunes Technical Support at +1-877-392-7854 (toll free) for assistance.
'118'	OPEN PROBE ON BOTTOM PLATEN		
'129'	TOP PLATEN SOLID STATE RELAY	SSR has shorted, the wiring between SSR and heater has shorted, or the control board has failed.	Technician is required for repair and/or replacement. Contact Antunes Technical Support at +1-877-392-7854 (toll free) for assistance.
'130'	BOTTOM PLATEN SOLID STATE RELAY		
'141'	TOP PLATEN OPEN HEATER		
'142'	BOTTOM PLATEN OPEN HEATER		

Hi Limit Control

If the Hi Limit trips, the display will show:

- E101 Hi-Limit

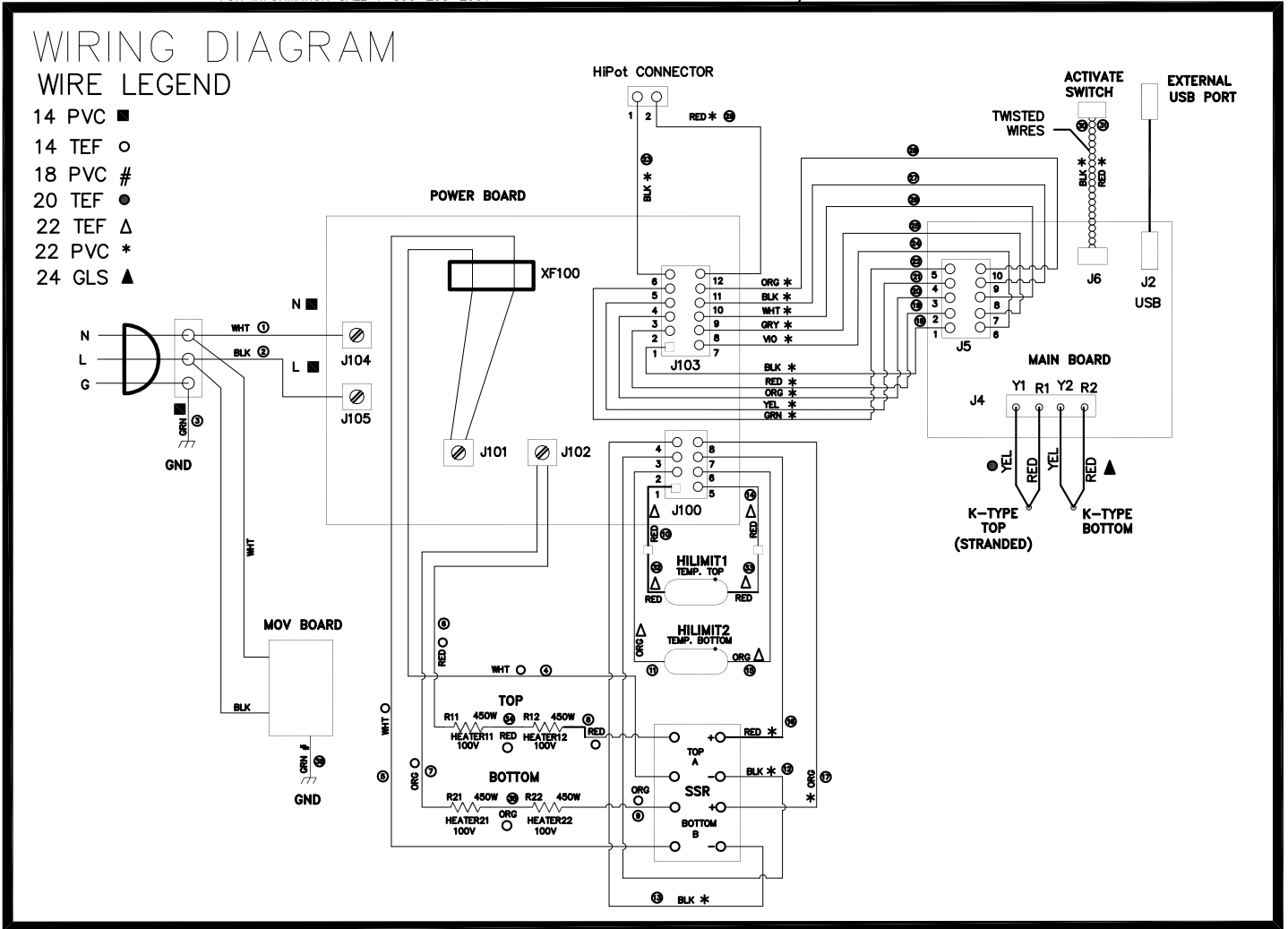
A tripped Hi Limit shuts off power to the unit. To reset a tripped Hi Limit switch:

1. Allow the unit to cool for 10 - 15 minutes.
2. Turn the unit back on.

Factory Reset

If the unit requires a Factory Reset, contact Antunes Technical Service at +1-877-392-7854 (toll free).

Wiring Diagram



Replacement Parts

Parts List

(See Exploded Views for more information)

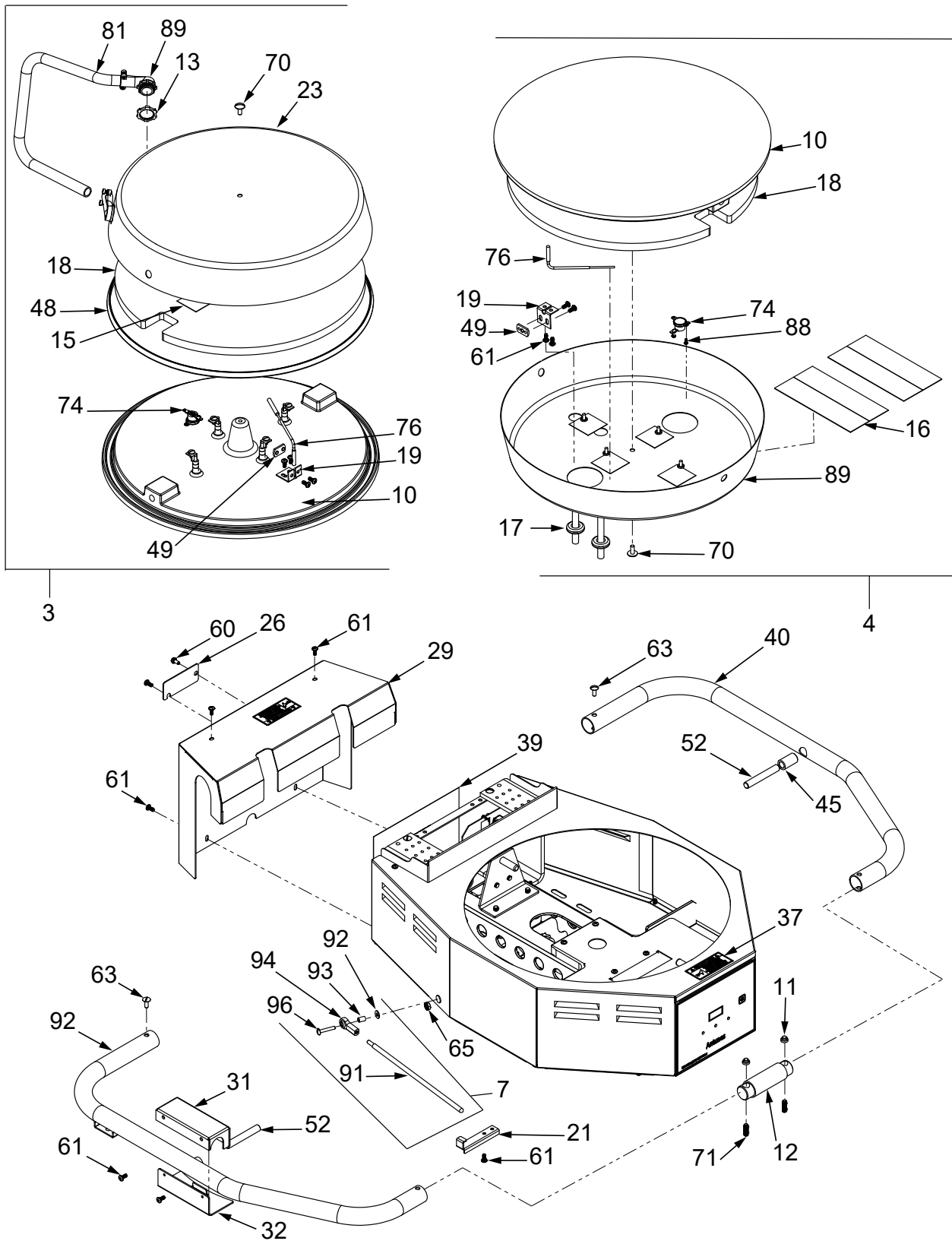
NOTICE
Use only genuine Antunes replacement parts in this unit. Use of parts other than those supplied by the manufacturer will void the warranty.

Item No.	Part #	Description	Qty.
1	0014417	Control Board Assembly	1
2	0014419	Main Frame and Housing	1
3	0014420	Upper Platen Assembly	1
4	0014421	Lower Platen Assembly	1
5	0014426	Torsion Bracket Assembly	1
6	0014427	Switch Bracket Assembly	1
7	0014429	Prop Rod, Assembly	1
8	0024595	LH Handle, Weldment	1
9	0024681	Platen Bracket Weldment	2
10	0100338	Round Platen	2
11	0300172	Locking Button, Handle	2
12	0300173	Handle Connector Spindle	1
13	0400138	Conduit Locknut 1/2"	1
14	0400170	Bushing, Snap - SB687 - 9	1
15	0400290	Electrical Insulator	4
16	0400361	Insulator	4
17	0400550	Grommet, 1/2 ID X 3/4	2
18	0400596	Round Platen Insulation	2
19	0502900	Bracket Sensor	2
20	0509587	Rear Cover Support Clip	2
21	0510257	Support Rest	1
22	0024523	MOV Board MTG PLT	1
23	0510816	Upper Platen Cover	1
24	0510830	Reinforcing Bracket	1
25	0510842	Bottom Panel	1
26	0510872	Cover USB Port	1
27	0510894	Conduit MTG Bracket	1
28	0510897	Bracket, USB Cable	1
29	0510916	Rear Cover	1
30	0024616	Center Board Panel	1
31	0511178	Cover, Anti-Rotation Bracket	1
32	0511179	Anti-Rotation Bracket	1
33	0511213	Handle Spacer	4
34	0600176	"Spring, EXT. 1.0" OD x 8.0" LG"	2
35	0701115	Wire Set	1
36	0808462	Spring Anchor Hook	2
37	1001428	CAUTION - HOT, Small Label	2
38	1002822	Control Label	1
39	1002832	Wiring Diagram Label	1
40	2000304	Upper Platen Handle	1
41	2100230	Recess Leg - 1 Cover Bumper	4
43	2110236	Cushioned Loop Clamp	2
44	2120299	Spring MTG Sleeve	2
45	2152050	Platen Pivot Bushing	2
46	2180145	Leg-Bumper Cover	4
47	2180621	Pivot Block	8

Item No.	Part #	Description	Qty.
48	2180625	Platen Cover Edging	1
49	3010101	Nut, Spotweld #08-32 4-40 x .25 LG Pan HD PHL S.S.	2
50	3010193	"7/16-14 x 2.5 LG Set Screw (Cup Point)"	1
51	3030167	Handle Pivot Shaft	1
52	3030168	Handle Pivot Pin	2
53	3040105	Nut, Hex "KEPS" #4-40 Zinc	9
55	3040131	Stud, Self-clinching #4-40 X 3/8"	5
56	3040156	4-40 x .25 LG PAN HD PH Nylon	2
57	3060101	Nut, Hex #06-32 St. Stl.	2
58	3060121	Scr, Mach #06-32 X 3/4 SLRNDHD; Steel; Zinc Pl.	2
59	3060130	Nut, Hexkeps #06-32 Steel; Zinc Plated	6
60	3080227	"Screw Mach #8-32 X 3/8 HXHD SLTD; Shoulder S/S"	1
61	3080358	"8-32 x .38 LG PH S.S. Epoxy-Lock Patch"	31
63	3100110	Screw, Mach. #10-32 X 1/2"	2
64	3100136	Scr, Mach #10-32 X 1-1/4 SLPANHD, 304 S/S BRT.	4
65	3100146	Nut, Hex "KEPS" #10-32	1
66	3100162	Screw, Mach. #10-24 X 3/8"	3
67	3100204	Screw, FHPH, #10-32 X 1/4 LG	4
68	3100245	#10-32 x 2.0 LG PH PHIL	8
69	3250109	Screw, Hexcap 1/4-20 X 1/2"	8
70	3250132	Screw, Mach 1/4-20X1/2 SLTRSHD; S/S 304	2
71	3250134	Set Screw, 1/4-20 x .75 LG SOC CUP PT	2
72	3310121	5/16-18 Hex Nut Nyl Inst	2
73	3120103	Shldr Scr 3/8 X .75 LG	2
74	4030404	Thermostat, 1/2 Disc Auto Reset	2
75	4050240	Relay, S.S. Dual Pole W/ Conn-Receptical	1
76	4051030	Thermocouple, Type K, 3/16 Dia, Open End, 52	2
77	4058135	Connector, 3/8 Conduit	2
78	4060304	Terminal Block-3 Pole	1
79	4060451	USB, A-F PNL Mount/ A-M Shield	1
80	4060504	USB M/F Extension Cable	1
81	4060513	Flexible Conduit 3/8" 20" Long	2
83	4070377	Asy-Pcb Tortilla Warmer Display	1
84	4070378	Asy-Pcb, Tortilla Warmer Power	1
85	4070405	Varistor Bd Chipotle	1
86	0022683	Heat Sink Plate	1
87	4058134	90° Conn Elbow; SS 3/8 Conduit 1/2" NSPM	2
88	3040114	4-40 x .25 LG PAN HD PHL S.S.	4
89	0510818	Lower Platen Cover	1
91	0808474	Platen Support Rod	1
92	3080142	Flat #8 Washer (3/16 x 7/16 O.D.)	1
93	2120153	Spacer .25OD X .38LG x .14 ID	1
94	2152069	Ball Joint, 10-32 Remale	1
95	3040114	Scr, Mach. #4-40 X 1/4"	2
96	3080164	Screw, Mach #8-32 X 1	1

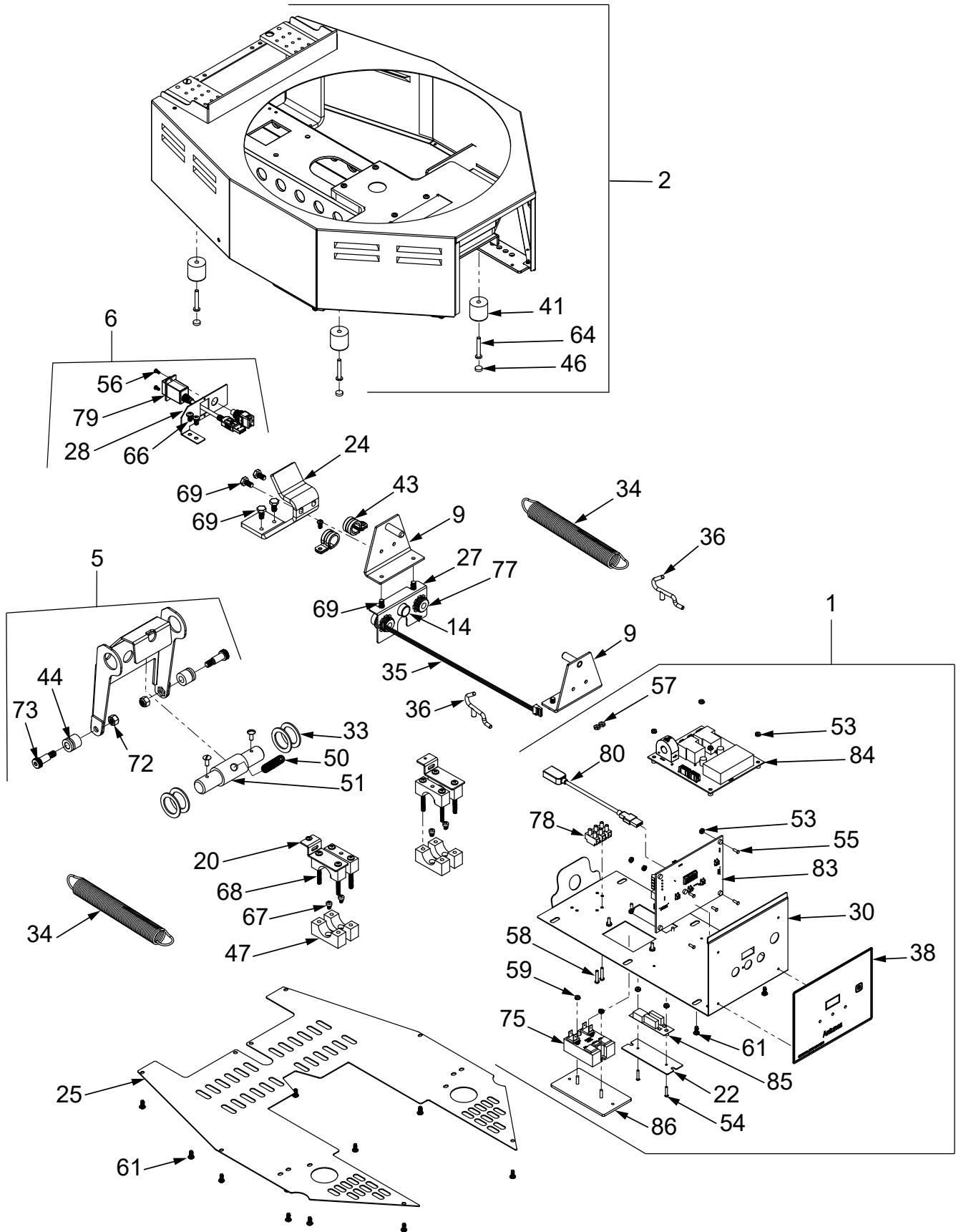
Exploded Views

Exploded View #1



REPLACEMENT PARTS

Exploded View #2



Limited Warranty

Equipment manufactured by Antunes has been constructed of the finest materials available and manufactured to high quality standards. These units are warranted to be free from electrical and mechanical defects for a period of one (1) year from date of purchase under normal use and service, and when installed in accordance with manufacturer's recommendations. To insure continued operation of the units, follow the maintenance procedures outlined in the Owner's Manual. During the first 12 months, electromechanical parts, non-overtime labor, and travel expenses up to 2 hours (100 miles/160 km), round trip from the nearest Authorized Service Center are covered.

1. This warranty does not cover cost of installation, defects caused by improper storage or handling prior to placing of the Equipment. This warranty does not cover overtime charges or work done by unauthorized service agencies or personnel. This warranty does not cover normal maintenance, calibration, or regular adjustments as specified in operating and maintenance instructions of this manual, and/or labor involved in moving adjacent objects to gain access to the equipment. This warranty does not cover consumable/wear items. This warranty does not cover damage to the Load Cell or Load Cell Assembly due to abuse, misuse, dropping of unit/shock loads or exceeding maximum weight capacity (4 lbs). This warranty does not cover water contamination problems such as foreign material in water lines or inside solenoid valves. It does not cover water pressure problems or failures resulting from improper/incorrect voltage supply. This warranty does not cover Travel Time & Mileage in excess of 2 hours (100 miles/160 km) round trip from the nearest authorized service agency.
2. Antunes reserves the right to make changes in design or add any improvements on any product. The right is always reserved to modify equipment because of factors beyond our control and government regulations. Changes to update equipment do not constitute a warranty charge.
3. If shipment is damaged in transit, the purchaser should make a claim directly upon the carrier. Careful inspection should be made of the shipment as soon as it arrives and visible damage should be noted upon the carrier's receipt. Damage should be reported to the carrier. This damage is not covered under this warranty.
4. Warranty charges do not include freight or foreign, excise, municipal or other sales or use taxes. All such freight and taxes are the responsibility of the purchaser.
5. THIS WARRANTY IS EXCLUSIVE AND IS IN LIEU OF ALL OTHER WARRANTIES, EXPRESSED OR IMPLIED, INCLUDING ANY IMPLIED WARRANTY OR MERCHANTABILITY OR FITNESS FOR A PARTICULAR PURPOSE, EACH OF WHICH IS HEREBY EXPRESSLY DISCLAIMED. THE REMEDIES DESCRIBED ABOVE ARE EXCLUSIVE AND IN NO EVENT SHALL ANTUNES BE LIABLE FOR SPECIAL CONSEQUENTIAL OR INCIDENTAL DAMAGES FOR THE BREACH OR DELAY IN PERFORMANCE OF THIS WARRANTY.

The warranty does not extend to:

- Damages caused in shipment
- Installation of electrical service
- Installation, calibration, or adjustment
- Normal maintenance outlined in this manual
- Consumable parts such as egg rings, gaskets, rubber feet, labels, O-rings, light bulbs, etc.
- Malfunction resulting from improper service or maintenance
- Damage caused by improper installation, improper use, abuse, or careless handling
- Damage from moisture coming in contact with electrical components
- Damage from tampering with, removal of, or changing preset controls or safety devices
- Damage caused by parts or components not provided by Antunes



Corporate Headquarters

Carol Stream, Illinois
Phone: +1 (630) 784-1000
Toll Free: +1 (800) 253-2991
Fax: +1 (630) 784-1650

China Facility

Suzhou, China
Phone: +86-512-6841-3637
Fax: +86-512-6841-3907