

**Aladdin Temp-Rite**®...better by degrees.

P.O. Box 2978, Hendersonville, TN 37077-2978  
1-800-888-8018 or 615-537-3600  
Fax 1-888-812-9956  
www.aladintemprite.com



# Temp-Rite II EXCEL™ CV Series RE THERMALIZATION CARTS Stainless Steel/Polyurethane Cart



---

---

## INSTALLATION GUIDE & OPERATING INSTRUCTIONS

---

---

Manual P/N 93372  
Rev. H 05 /13/2016

**IMPORTANT NOTE:**

Doors must remain open during chill-down and rethermalization cycle.

Rethermalization cart to be used with Aladdin Temp-Rite approved Roll-In Refrigerator or Central Retherm System only, tempered to 41°F or less.

Duty cycle not to exceed 40 minutes of continuous rethermalization or an additional.

**AVIS IMPORTANT:**

Portes doivent rester ouvertes pendant mise en froid et rethermalisation cycle.

Chariot rethermalisation doit être utilisé seulement avec armoire réfrigérée ou chambre froide approuvée par Aladdin Temp-Rite, tempérée à 5°C ou moins.

Le cycle horaire ne doit pas dépasser les 40 minutes de rethermalisation continu ni 24 minutes des temps retenir additionnel.

---

---

# CV SERIES EXCEL™ CART

---

---

## CONTENTS

I. MODELS .....	4
II. RECEIVING INSPECTIONS .....	5
III. CLEANING .....	6
IV. MAINTENANCE .....	7
V. DRAWINGS/PARTS LIST .....	10
VI. WIRING DIAGRAM .....	12
VII. TROUBLESHOOTING .....	13
VIII. SERVICE .....	13
IX. WARRANTY .....	14

Model Number: \_\_\_\_\_  
Serial Number: \_\_\_\_\_  
Purchase Date: \_\_\_\_\_

# CV SERIES EXCEL™ CART

## I. MODEL/DESCRIPTION

### Temp-Rite II Excel Cart Description

#### Temp-Rite II Excel CV Cart Electrical

Capacity	Sales Code	Electrical Data			
		Volts	Cycle	Phase	Amps*
16	C616V	208-240V / 120V / 4W	60HZ	Single	11.3
20	C620V	208-240V / 120V / 4W	60HZ	Single	14.1
24	C624V	208-240V / 120V / 4 W	60HZ	Single	17.0

\*For system wiring see refrigerator specs. for max. system amp. loads.  
Cart is wired 240V thru the plug to separately supply 120V ea.

#### Temp-Rite II Excel CV Cart Dimensions

Capacity	Sales Code	Physical Data			
		Weight	Height	Width	Length
16	C616V	208 lbs. (94.35kg)	56.36" (143.2cm)	26.38" (67.0cm)	28.13" (71.5cm)
20	C620V	217 lbs. (98.44kg)	56.36" (143.2cm)	26.38" (67.0cm)	28.13" (71.5cm)
24	C624V	240 lbs. (108.9kg)	64.56" (164.0cm)	26.38" (67.0cm)	28.13" (71.5cm)

The Aladdin CV Series rethermalization cart may serve 4 basic functions:

- A. **Store** complete, preassembled meals;
- B. **Rethermalize** meals inside a rethermalization refrigerator or walk-in cooler;
- C. **Deliver** the meals;
- D. **Retrieve** trays for return to warewash after each meal.

The carts are available in 16, 20, and 24 shelf capacity. The carts are used with Aladdin's central walk-in and single or double bay roll-in refrigerators (Model No. R61CV, R62CV). Temp-Rite II Excel technology is protected under U.S. Patent number 5,403,997.

Each cart features the following:

- A. Individually activated heater elements. When trays containing meals to be heated are placed on the heater elements, they are positioned so that the dome activates the switch for each heater element. When trays containing cold meals are placed in the carts, they are done so without the dome cover.
- B. Thermostatically controlled heater elements allow for gentle conductive heat to the specified food section inside the tray, regardless of density or consistency.
- C. Two swivel casters with brakes and two rigid casters for ease of mobility and delivery.

- D. A positive and automatic electrical connection system is achieved when the cart is rolled into the rethermalization refrigerator or central walk-in cart stall by guiding the rigid casters into the caster guides on the floor. The floating male plug on the cart mates automatically with the receptacle on the refrigerator wall as the cart is rolled into position, assuring a positive automatic connection. When the carts are in position, they are locked in place by pushing down on the brake activator plate of the swivel casters.
- E. A cart tow hitch is available for the 16 & 20 shelf carts. This optional choice adds extra convenience and versatility to the Excel CV Cart.

The carts are then held in refrigerated storage. Approximately thirty-six (36) minutes before meal service, meals are heated while inside the refrigerator or walk-in without rehandling. Aladdin's insulated technology can keep each food item, hot or cold, at the proper temperature until served.

## II. RECEIVING INSPECTIONS

Your Aladdin Temp-Rite cart is factory tested for performance and is free from defects when shipped.

### ALADDIN DAMAGED GOODS POLICY

There are two types of damaged merchandise:

- Visual Damage
- Concealed Damage

Visual Damage – When the product being received is visibly damaged.

1. Receiver should not accept merchandise with visual damage.
2. Receiver must sign delivery receipt “refused merchandise due to damage” and specify damage.
3. Receiver should call Aladdin Customer Service immediately after refusal.
4. Carrier will notify Aladdin Traffic Department and a claim will be filed.
5. Carrier will send acknowledgement of claim within 7 days after receiving.

Concealed Damage – When damaged merchandise cannot be externally detected.

Any receiving operation should be looking for this type of damage. Sometimes, however, depending on the type of product, it is almost impossible to notice.

1. Merchandise must not be removed from point of delivery and all packaging must be kept intact.
2. Receiver must contact Aladdin customer service to report damage.
3. Aladdin traffic department will request inspection based on the dollar value of the cargo.
4. Aladdin traffic department will file a claim based on the findings of the inspection.

Failure to comply with these policies will result in the customer's responsibility to file claims.

---

# CV SERIES EXCEL™ CART

---

## III. CLEANING

---

Warning: Use of chlorinated detergents may cause damage to the cart finish.

Warning: Use of steel wool or metallic scouring cloths may damage the cart finish.

---

CAUTION ! Harsh chemicals and insufficiently diluted sanitizers will damage heater elements and void equipment warranty

---

### RECOMMENDED METHOD

1. Wipe heater elements, walls, handles, and sides with a soft clean cloth, using warm water and a non-chlorinated and non-abrasive cleaner. (Save time by wiping in a figure eight pattern.)
2. Rinse thoroughly with warm water and wipe dry with a soft, absorbent cloth.
3. To remove heavy soil, rub the area with a non-metallic, fine grain, scouring cloth. Be sure to rub in the same direction as the metal grain. Rinse thoroughly with warm water and wipe dry with a soft, absorbent cloth.
4. Sanitize with a properly diluted sanitizer. Use of undiluted sanitizers will cause damage to the heater elements, plastic and metal finishes.

---

---

# IV. MAINTENANCE

---

NOTE: The following maintenance frequency is a recommendation only. Adjustment may be required for varying environments and equipment age.

## CART BODY:

### Casters (Monthly or as needed)

1. Check casters for freedom of movement and proper brake retention.
2. Remove debris. (mop strings, hair, etc.)
3. Lubricate casters and wheels as needed. (at least semiannually)
4. Replace caster when rubber measures less than 1/4" from caster rim.

### Cart Mating (Semi-Annually or as needed)

1. Check for proper mating into cart stall or refrigerator receptacle.
2. Check for bent plug blades, restricted plug float, and improper receptacle height.

### Side and Top Panels (Quarterly or as needed)

1. Check side and top panels of the retherm cart for tightness and proper seal.

## HEATING ELEMENTS:

### Element Visual Inspection (Quarterly or as needed)

1. Make sure that each heater element is securely attached to the mounting crossbar.
2. Tighten any loose heater pods or mounting crossbars.

### Element Function Check (Weekly or as needed)

1. Replace any malfunctioning heater elements (See HEATER ELEMENT FUNCTION CHECK procedure on page 8)

## GENERAL ELECTRICAL

### Cart Lights (Quarterly or as needed)

1. Inspect cart lights, making sure that they are in good condition and operational.
2. Replace as required.

### Plug Assembly (Quarterly or as needed)

1. Visually and physically inspect retherm cart plug assembly for freedom of horizontal and vertical movement. Remove any debris found and replace if the assembly is bent.
2. Inspect plug blades for distortion and replace if any blades are bent, broken or missing.

## CART DOORS

### (Quarterly or as needed)

1. Verify that the doors swing freely over a 270° arc without contacting the bottom or top cover

---

# CV SERIES EXCEL™ CART

---

panel, and stay securely in place in the open and closed positions.

## HANDLES

(Quarterly or as needed)

1. Verify that the handles are securely fastened, tighten at top and bottom panels as needed.

## TOW HITCH OPTION

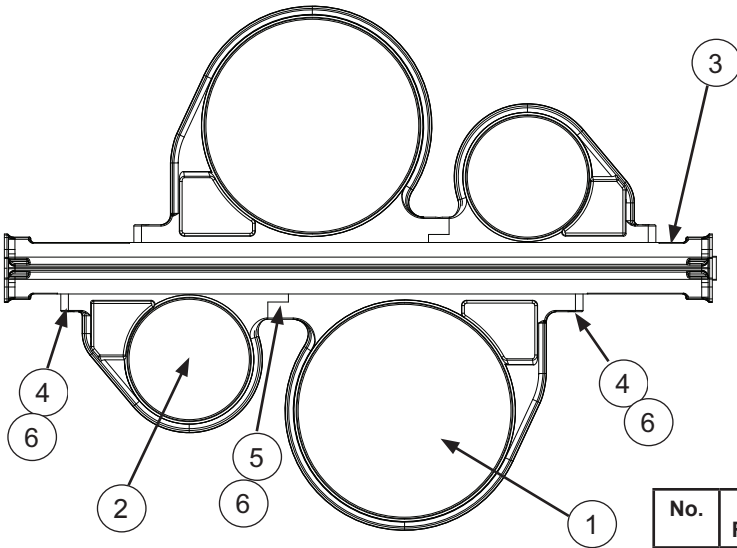
(Quarterly or as needed)

1. Ensure that the hinge is secure, tighten as needed.
2. Ensure that tow bar swings freely, and springs back into place.
3. Clean tow hitch and tighten all fasteners as needed.

## HEATER ELEMENT FUNCTION CHECK

The following test procedure should only be performed by a qualified operator, maintenance technician, or an Aladdin authorized service agent.

1. Activate the element magnetic switch by placing the pod testing bar on the raised portion of each heater element.
2. Switch the cord set to test position (1) to energize every other element level.
3. If the test light comes on the element is working. Do not touch heater element as it may cause a burn.
4. After checking the first set of alternating rows switch the test cord to position three (3) to test the remaining elements (the other alternating rows).
5. After each element has been on for approximately ten (10) minutes. Switch test cord to middle position (off) and unplug test cord from wall.
6. Be sure to remove test bar from the cart.
7. Replace any malfunctioning heater elements using the following procedure.



No.	Qty. Req'd.	Aladdin P/N	Description
1a	2	<a href="#">11116</a>	7" Face-Mounted Entree Pod (Gray Top)
1b	-	96053	7" Face-Mounted Entree Pod (BlackTop)
2a	2	<a href="#">11115</a>	3" Face-Mounted Soup Pod (Gray Top)
2b	-	96252	3" Face-Mounted Soup Pod (BlackTop)
3a	1	<a href="#">97654</a>	Crossbar for 7"/3" Face-Mounted Pods
3b	-	93895	Crossbar for 7"/3" Face-Mounted Pods
4	4	<a href="#">34789</a>	#10-32 X 3/4" S/S Bolt w/ Socket Hd, Nylock Coated
5	2	75378	#10-32 X 1" S/S Bolt w/ Socket Hd, Nylock Coated
6a	6	<a href="#">98176</a>	Screw cover (Gray Top)
6b	-	94306	Screw cover (BlackTop)

## HEATER ELEMENT REPLACEMENT PROCEDURE

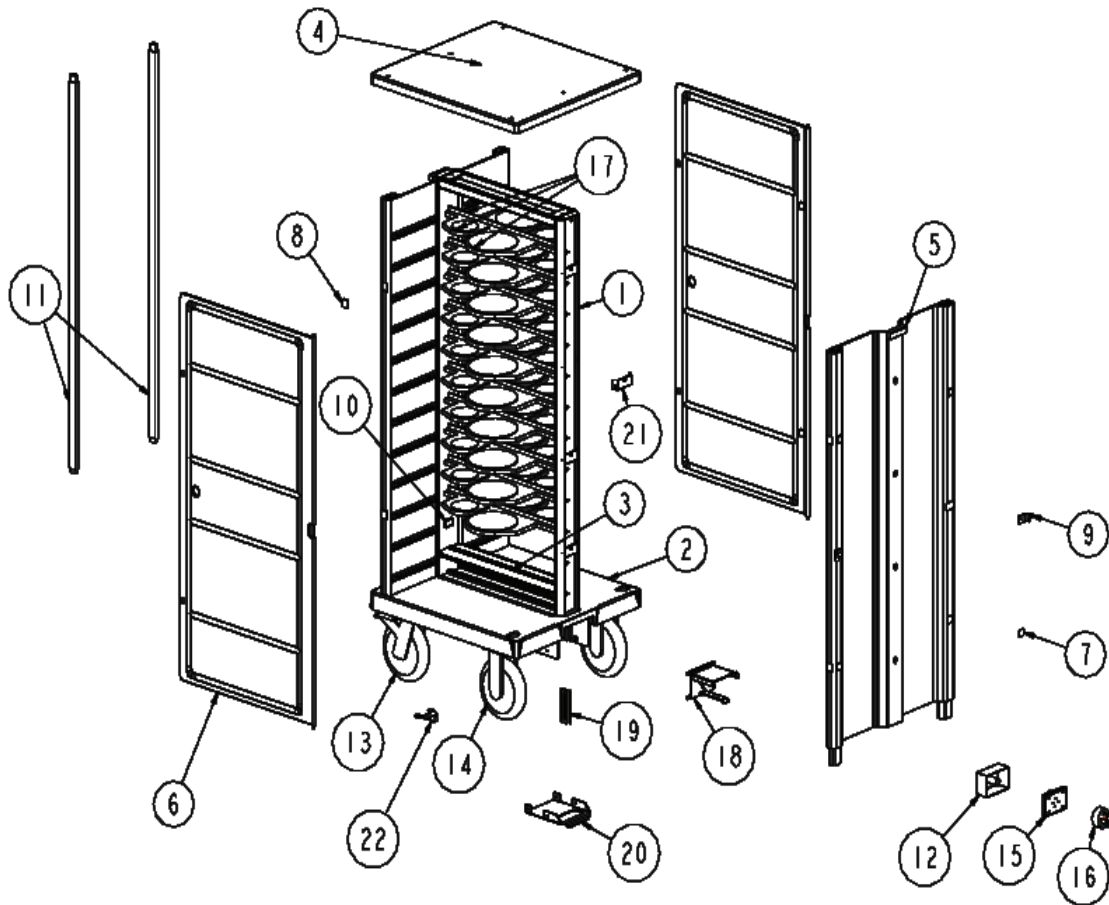
**Make sure the power source is removed from the cart before attempting the element replacement procedure!**

1. Remove the screw covers from the inoperative element.
2. Using a  $\frac{5}{32}$ " Allen wrench, remove the two screws holding the element to the crossbar.
3. After the screws are loose, gently pull the element away from the crossbar (pull out parallel to the floor). Note: Do not jerk or twist the element when removing it.
4. To install the new element, align the element and gently push it into place. Make sure the pins are properly aligned.
5. While firmly holding the element in place, align the screw holes and reinstall the screws. Make sure that the longer screw 10-32 x  $\frac{3}{4}$ " is placed in the center where both elements are bolted together. Tighten using a  $\frac{5}{32}$ " Allen wrench.
6. Replace the screw covers.
7. Verify the operation of the new element by using the heater element function check. (See page 8)

# CV SERIES EXCEL™ CART

## V. DRAWINGS/PARTS LIST

See page 11 for parts list for the illustration below.



Item Number	Part #	Description	Quantity
1	93198	Anti-Racking Frame, 20	1
	93325	Anti-Racking Frame, 24	1
2	93199	Bottom Panel	1
3	93365	Frame channel cover plate	1
F	93507	Bolt, 10-32 x 3/8", hex, s/s, 1/4" nylon strip	4
4	93200	Top Panel	1
F	93204	Bolt, 3/8"-16x3/4", Hex	6
F	93506	Black Finishing Cap	6
F	93508	Finishing cap washer	6

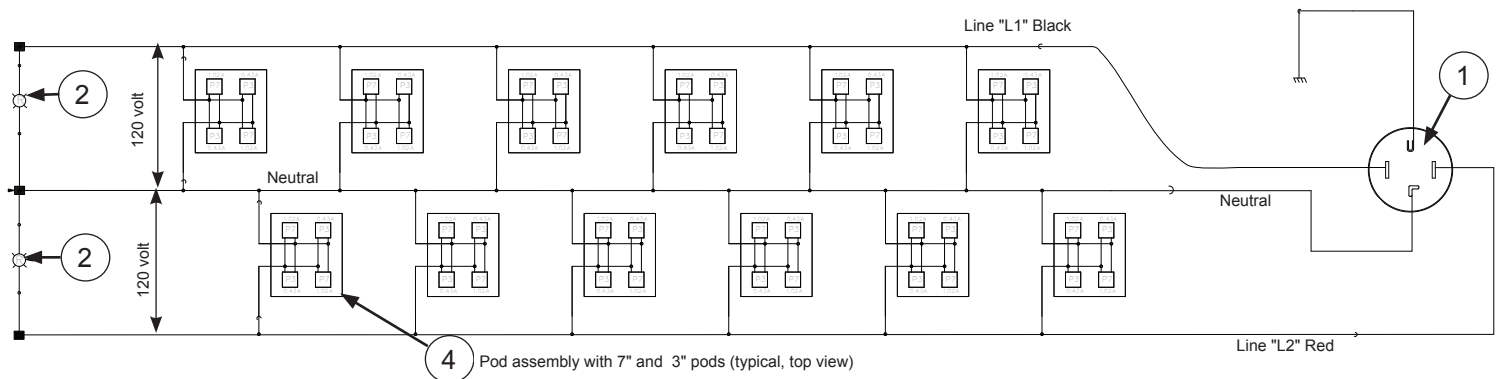
Item Number	Part #	Description	Quantity
F	93509	3/8" ext. tooth star washer	6
5	93327	Side Panel, 20	2
	93201	Side Panel, 24	2
F	93882	Screw, 3/8"-16x3/4", s/s, flat phillips (for 20-shelf), (for 24 shelf)	6, 8
N/S	93206	Lights, Indicator	2
N/S	93294	Clip, 1/2" push-on	2
N/S	93293	O-ring, 0.624"/0.494"	2
6	93329	Door, 20	2
	93202	Door, 24	2
7	93765	Strike plates, side panel end	4
8	93766	Strike plates, side panel edge	4
F	93888	Machine screw, #6-32 x 3/4", s/s flat head, F point	8
9	93315	Center hinge, door	2
F	93304	Machine Screw, #12-24 x 1/2", flat head, slotted, s/s	2
10	93370	X-bar hole plug	4
F	93373	Palnut, 3/8" x 5/8"OD	4
11	93561	Handle Assembly (20)	2
	93562	Handle Assembly (24)	2
12	11573	J-box with holes	1
F	28371	Nut, 10-24,nylok	3
13	94397	Swivel Caster, 8 inch, with brakes, with plunger	2
14	94398	Rigid Caster, 8 inch	2
F	93292	Washer, 3/8", Lock, s/s, xl	16
F	93205	Washer, 3/8", Flat, s/s	16
F	94080	Bolt, 3/8"-16x1", Hex	16
15	39326	Valox Spacer	1
F	28353	Bolt, 6-32x3/8",pan-slt,s/s	4
F	24932	#6 internal star washer	4
16	39243	Plug, 14-30P,125v, 30A, 4 wire Hubbell	1
17	92892	Pod Assembly	8
F	75056	Bolt, 8-32x1/2", Pan head-Phillps	48
18	93276	Slide base weldment	1
19	93312	Slides, Plug guide, nylon	2
20	93326	Guard, rear channel	1
F	29254	1/4"-20 x 1/2" Hex	4
F	28331	1/4" Lockwasher	4
21	93880	Side Panel Support Bracket (add as needed), (for 24 shelf)	6, 8
F	94126	Screw, 3/8"-16x1", s/s, flat phillips (for 20-shelf), (for 24 shelf)	6, 8
	93889	Spring Pin, 1/8" dia, 1/2" L (for 20-shelf), (for 24 shelf)	12, 16
22	94396	Plunger lock (for swivel casters)	2

N/S = Not Shown

# CV SERIES EXCEL™ CART

## VI. WIRING DIAGRAM

20 SHELF CART shown



Item No	Part #	Qty	Description
1	39243	1	30A, 4 wire, male plug hubbell
2	93206	2	amber neon indicator light (125 co, 1/2W) solico model# 3150-1-00-57620
	35203 male	24	male/female disconnect terminals (T&B "sta-kons") wire range 14-18 AWG
	39921 female	24	
4	94362	10	Pod assembly
		1	#10 terminal ring equipment ground terminated to base wire range: 12-10 AWG
		6.32 ft 20 shelf 7 ft 24 shelf	#12 AWG, stranded copper. 600 volt, type TEW wire color code black
		6.32 ft 20 shelf 7 ft 24 shelf	#12 AWG, stranded copper. 600 volt, type TEW wire color code red
		6.32 ft 20 shelf 7 ft 24 shelf	#12 AWG, stranded copper. 600 volt, type TEW wire color code white

Item No	Part #	Qty	Description
		3 ft 20 shelf 4 ft 24 shelf	#12 AWG, stranded copper. 600 volt, type TEW wire color code green / yellow
		3 ft 20 shelf 4 ft 24 shelf	#18 AWG, stranded copper 600 volt, type TEW wire color code black
		3 ft 20 shelf 3.5 ft 24 shelf	#18 AWG, stranded copper 600 volt, type TEW wire color code white
		3.75 in	#18 AWG, stranded copper 600 volt, type TEW wire color code green / yellow

Note: AWG - America Wire Gauge

# VII. TROUBLESHOOTING

Performance problems often result from minor incidents that can be found and corrected by checking and following the basic points mentioned in the table below.

SYMPTOM	PROBABLE CAUSE	CORRECTION
Caster will not lock.	Debris pick up.	Clean.
Poor rolling of caster.	Debris in swivel bearing of caster. Needs grease	Clean. Add grease at Zerk fittings.
No electric power to cart/ cart engaged not showing on timer or touchscreen.	Cart not in refrigerator or cart stall. Breakers not on, in control panel or refrigerator. Improper alignment of floating plug to receptacle.  Faulty relay in panel. Faulty receptacle, or slide Weldment is bent. Faulty proximity switch.	Realign cart. Reset breakers. Check for correct plug alignment and shim rigid casters to properly align the plug with the cart receptacle. Repair and/or replace relay. Repair and/or replace receptacle. Repair switch on cart stall or refrigerator.
Trays hard to load into carts.	Incorrect stacking of dishes, utensils, or domes.	Replace tray.
Entree or soup not hot at end of cycle.	Door safety switch has deactivated master relay.  Dome not positioned properly. Tray is not fully in place. Heater element malfunction. High temp alarm on retherm has deactivated master relay.	Refrigerator (roll-in) door was opened during rethermalization. Close door and repeat rethermalization. Place dome on correctly. Adjust so that it is locked in place. Replace heater element. Refrigerator cabinet temperature too high contact authorized service agent.

# VIII. SERVICE

If you need assistance, call Aladdin's Toll Free Service Line, call 1-800-888-5426  
Please have the following numbers available:

**Model Number:** \_\_\_\_\_  
**Serial Number:** \_\_\_\_\_  
**Purchase Date:** \_\_\_\_\_

# CV SERIES EXCEL™ CART

## IX. WARRANTY

### ALADDIN TEMP-RITE EQUIPMENT LIMITED WARRANTY

Effective April, 1999

Aladdin Temp-Rite, ("ATR") warrants to the original purchaser that the equipment listed below shall be free from defects in material and workmanship under normal use for the applicable warranty term set forth below. ATR's obligation under this warranty is limited to the repair or replacement, at the sole option of ATR, of any part which upon inspection and examination by ATR or its authorized agent is found to be defective. A written description detailing the nature of the claimed defect, together with the equipment claimed to be defective if required by ATR, must be delivered to ATR or its authorized agent within 30 days of discovery of the claimed defect (but in no event later than 30 days after the expiration of the applicable warranty term).

EQUIPMENT TEMP-RITE II EXCEL CARTS	WARRANTY TERM*	
	PARTS	LABOR
C616V	1 YEAR	1 YEAR
C620V	1 YEAR	1 YEAR
C624V	1 YEAR	1 YEAR
HEATER ELEMENTS	2 YEARS	N/A

\*The warranty term commences 30 days after the date of Aladdin's invoice for the equipment.

THE WARRANTIES AND REPRESENTATIONS OF ATR CONTAINED HEREIN ARE EXPRESSLY IN LIEU OF, AND THE BUYER WAIVES, ANY AND ALL OTHER WARRANTIES EXPRESS OR IMPLIED, INCLUDING THE WARRANTIES OF MERCHANTABILITY AND FITNESS FOR A PARTICULAR PURPOSE, AND ANY OTHER REMEDIES AGAINST ATR, WHETHER BASED UPON CONTRACT, NEGLIGENCE STRICT LIABILITY OR OTHERWISE. ALADDIN SHALL NOT BE LIABLE FOR ANY CONSEQUENTIAL OR INCIDENTAL DAMAGES OR ECONOMIC LOSS OF ANY NATURE (INCLUDING WITHOUT LIMITATION LOSS OF REVENUES AND/OR PROFITS) THAT MAY BE CLAIMED TO RESULT FROM ANY NEGLIGENCE OR BREACH OF WARRANTY OR CONTRACT BY ATR.

#### Exceptions and Exclusions

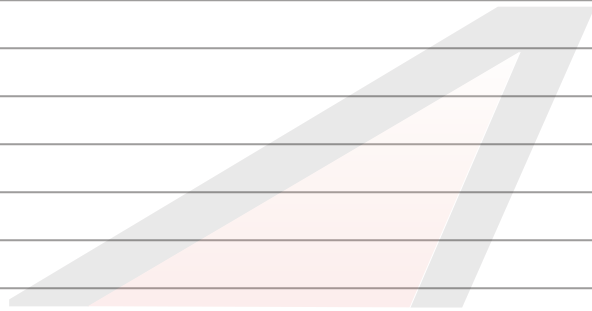
This warranty is issued only to the original purchaser, and is not transferable and applies only to the products installed within the United States of America, its territories and Canada. During the term of any labor warranty, ATR will pay all preapproved shipping charges incurred in returning defective equipment to ATR and labor costs incurred in the removal and reinstallation of such equipment. Contact ATR before returning any claimed defective equipment or otherwise performing warranty repairs. ATR assumes no liability for any work or repair performed without its prior approval. After the expiration of any labor warranty, the original purchaser is responsible for all shipping charges incurred in returning defective equipment to ATR and labor for removing and reinstalling such equipment. ATR shall not be responsible for the replacement of expendable items like lamps and fuses or product failure resulting from normal wear and tear, improper installation, misuse, sabotage, abuse, neglect, accident, unauthorized alterations or repair, or other factors beyond the control of ATR. Neither this warranty nor the liability of ATR may be modified or extended by action of any agent, distributor or other person or by custom or practice.

CALL ALADDIN TEMP-RITE TOLL FREE AT 1-800-888-5426 IF YOU HAVE ANY QUESTIONS ABOUT THIS WARRANTY OR YOUR ATR PRODUCT.

---

---

**NOTES:**





250 East Main Street, Hendersonville, TN 37075

1-800-888-8018 • [www.aladdintemprite.com](http://www.aladdintemprite.com) • [info@aladdin-atr.com](mailto:info@aladdin-atr.com)