

**Aladdin Temp-Rite**<sup>®</sup>...better by degrees

P.O. Box 2978, Hendersonville, TN 37077-2978  
1-800-888-8018 or 615-537-3600  
Fax 1-888-812-9956  
www.aladdintemprite.com



# Temp-Rite II EXCEL<sup>™</sup>

## RE THERMALIZATION CARTS

### C700 Series

### Stainless Steel Cart



---

---

## INSTALLATION GUIDE & OPERATING INSTRUCTIONS

---

---

Manual P/N 92570  
Rev. L 05/13/2016

**IMPORTANT NOTE:**

Doors must remain open during chill-down and rethermalization cycle.

Rethermalization cart to be used with Aladdin Temp-Rite approved Roll-In Refrigerator or Central Retherm System only, tempered to 41°F or less.

Duty cycle not to exceed 40 minutes of continuous rethermalization or an additional.

**AVIS IMPORTANT:**

Portes doivent rester ouvertes pendant mise en froid et rethermalisation cycle.

Chariot rethermalisation doit être utilisé seulement avec armoire réfrigérée ou chambre froide approuvée par Aladdin Temp-Rite, tempérée à 5°C ou moins.

Le cycle horaire ne doit pas dépasser les 40 minutes de rethermalisation continu ni 24 minutes des temps retenir additionnel.

---

---

# C700 SERIES EXCEL™ CART

---

---

## CONTENTS

- I. MODELS ..... 4
- II. RECEIVING INSPECTIONS ..... 5
- III. CLEANING ..... 6
- IV. MAINTENANCE ..... 7
- V. DRAWINGS/PARTS LIST .....11
- VI. WIRING DIAGRAM .....13
- VII. TROUBLESHOOTING .....14
- VIII.SERVICE .....14
- IX. WARRANTY .....15

Model Number: \_\_\_\_\_  
Serial Number: \_\_\_\_\_  
Purchase Date: \_\_\_\_\_

# C700 SERIES EXCEL™ CART

## I. MODEL/DESCRIPTION

### Temp-Rite II Excel Cart Description

#### Temp-Rite II Excel Cart Electrical

Capacity	Sales Code	Electrical Data			
		Volts	Cycle	Phase	Amps*
16	C 716DTKD	208-240V / 120V / 4W	60HZ	Single	10.8
20	C 720DTKD	208-240V / 120V / 4W	60HZ	Single	13.5
24	C 724DTKD	208-240V / 120V / 4W	60HZ	Single	17.2

\*For system wiring see refrigerator specs. for max. system amp. loads.  
Cart is wired 240V thru the plug to separately supply 120V ea.

#### Temp-Rite II Excel Cart Dimensions

Capacity	Sales Code	Physical Data			
		Weight	Height	Width	Length
16	C 716	266 lbs. (120.7kg)	47.9" (121.7cm)	28.35" (72cm)	30" (76.2cm)
20	C 720	300 lbs. (136.1kg)	56.3" (143.1cm)	28.35" (72cm)	30" (76.2cm)
24	C 724	320 lbs. (145kg)	64.5" (163.8cm)	28.35" (72cm)	30" (76.2cm)

The Aladdin C700 Series rethermalization cart may serve 4 basic functions:

- A. Store complete, pre-assembled meals;
- B. Rethermalize meals inside a rethermalization refrigerator or walk-in cooler;
- C. Deliver the meals;
- D. Retrieve trays for return to warewash after each meal.

The carts are available in 16, 20, and 24 shelf capacity. The 16 and 20 shelf carts are used with Aladdin's central walk-in and single or double bay roll-in refrigerators. The Temp-Rite II Excel technology is protected under U.S. Patent number 5,403,997. Each cart features the following:

- A. Individually activated heater elements. When trays containing meals to be heated are placed on the heater elements, they are positioned so that the dome activates the switch for each heater element. When trays containing cold meals are placed in the carts, they are done so without the dome cover.
- B. Thermostatically controlled heaters within each element allow for a full range of gentle conduction heat to food section inside the tray, regardless of density or consistency.
- C. Two swivel casters with brakes and two rigid casters for ease of mobility and delivery.
- D. A positive and automatic electrical connection system is achieved when the cart is rolled into the rethermalization refrigerator or central walk-in cart stall by guiding the rigid casters into the caster guides on the floor. The floating male plug on the cart mates automatically with the receptacle on the refrigerator wall as the cart is rolled into position, assuring a positive automatic connection. When the carts are in position, they are locked in place by pushing down on the brake activator plate of the swivel

---

---

casters.

- E. A cart identification holder is available on the 16, 20 and 24 shelf carts. A cart tow hitch, and a galley style carrier is available for the 16 & 20 shelf carts. These optional choices add extra convenience and versatility to the Excel 700 Carts.

The carts are then held in refrigerated storage. Approximately thirty-six (36) minutes before meal service, meals are heated while inside the refrigerator or walk-in without rehandling. Aladdin's insulated technology can keep each food item, hot or cold, at the proper temperature until served.

## II. RECEIVING INSPECTIONS

---

Your Aladdin Temp-Rite cart is factory tested for performance and is free from defects when shipped.

### ALADDIN DAMAGED GOODS POLICY

There are two types of damaged merchandise:

- Visual Damage
- Concealed Damage

Visual Damage – When the product being received is visibly damaged.

1. Receiver should not accept merchandise with visual damage.
2. Receiver must sign delivery receipt “refused merchandise due to damage” and specify damage.
3. Receiver should call Aladdin Customer Service immediately after refusal.
4. Carrier will notify Aladdin Traffic Department and a claim will be filed.
5. Carrier will send acknowledgement of claim within 7 days after receiving.

Concealed Damage – When damaged merchandise cannot be externally detected.

Any receiving operation should be looking for this type of damage. Sometimes, however, depending on the type of product, it is almost impossible to notice.

1. Merchandise must not be removed from point of delivery and all packaging must be kept intact.
2. Receiver must contact Aladdin customer service to report damage.

---

---

# C700 SERIES EXCEL™ CART

---

---

3. Aladdin traffic department will request inspection based on the dollar value of the cargo.
4. Aladdin traffic department will file a claim based on the findings of the inspection.

Failure to comply with these policies will result in the customer's responsibility to file claims.

## III. CLEANING

---

Warning: Use of chlorinated detergents may cause damage to the stainless steel finish.

Warning: Use of steel wool or metallic scouring cloths may damage the stainless steel.

CAUTION ! Harsh chemicals and insufficiently diluted sanitizers will damage heater elements and void equipment warranty

The Aladdin Excel™ rethermalization cart should be sanitized and cleaned after each use.

### RECOMMENDED METHOD

1. Wipe heater elements, walls, handles, and sides with a soft clean cloth, using warm water and a non-chlorinated and non-abrasive cleaner. (Save time by wiping in a figure eight pattern.)
2. Rinse thoroughly with warm water and wipe dry with a soft, absorbent cloth.
3. To remove heavy soil, rub the area with a non-metallic, fine grain, scouring cloth. Be sure to rub in the same direction as the metal grain. Rinse thoroughly with warm water and wipe dry with a soft, absorbent cloth.
4. Sanitize with a properly diluted sanitizer. Use of undiluted sanitizers will cause damage to the heater elements and metal finish.
5. Outside of Cart Only! As a final step, a stainless steel polish may be used. The polish will shine the stainless steel and provide a protective finish that will reduce future soiling.

### ADDITIONAL CLEANING PROCEDURES FOR DECORATIVE PANELS AND BUMPERS

1. Clean the decorative panels with a properly diluted stainless steel cleaner using a non-abrasive cloth.
2. Clean the bumpers with any industrial sanitizer diluted to its recommended strength.

---

---

## IV. MAINTENANCE

---

NOTE: The following maintenance frequency is a recommendation only. Adjustment may be required for varying environments and equipment age.

### CART BODY:

Tray Guides (Monthly or as needed) See TRAY GUIDE TEST PROCEDURE on page 8

1. Replace any broken or loose tray guides.
2. Tighten any screws of the tray guides that are found to be loose.

Casters (Monthly or as needed)

1. Check casters for freedom of movement and proper brake retention.
2. Remove debris. ( mop strings, hair, etc.)
3. Lubricate casters and wheels as needed. (at least semiannually, more frequently if cart wash is used)
4. Replace caster when rubber measures less than 1/4" from caster rim.

Cart Mating (Semi-Annually or as needed)

1. Check for proper mating into cart stall or refrigerator receptacle.
2. Check for bent plug blades, misaligned actuation bar, restricted plug float, and improper receptacle height.

Cart Bumpers (Semi-Annually or as needed)

1. Ensure bumpers are securely fastened, tighten as needed.
2. Clean with cleaning solution mixed at regular strength dilution.

Side and Top Panels (Quarterly or as needed)

1. Check side and top panels of the retherm cart for tightness and proper seal.
2. Replace missing or broken silicone seal where top panel meets all four side panels and where corner panels meet bumper.

Actuation Bar (Quarterly or as needed)

1. Ensure that actuation bar is securely fastened and parallel with the base of the cart to achieve correct proximity input to the retherm controller.

### HEATING ELEMENTS:

Element Visual Inspection (Quarterly or as needed)

1. Make sure that each heater element is securely attached to the mounting crossbar.
2. Tighten any loose heater pods or mounting crossbars.

---

---

# C700 SERIES EXCEL™ CART

---

---

Element Function Check (Weekly or as needed)

1. Replace any malfunctioning heater elements. (See HEATER ELEMENT FUNCTION CHECK procedure on page 9)

## GENERAL ELECTRICAL

Cart Lights (Quarterly or as needed)

1. Inspect cart lights, making sure that they are in good condition and operational.
2. Replace as required.

Plug Assembly (Quarterly or as needed)

1. Visually and physically inspect retherm cart plug assembly for freedom of horizontal and vertical movement.  
Remove any debris found and replace if the assembly is bent.
2. Inspect plug blades for distortion and replace if any blades are bent, broken or missing.

## CART DOORS

(Quarterly or as needed)

1. Verify that the doors swing freely over a 270° arc without contacting the bumpers or top cover panel, and stay securely in place in the open and closed positions.
2. Replace any missing or loose magnets.
3. Replace any missing black screw covers.

## HANDLES

(Quarterly or as needed)

1. Verify that the handles are securely fastened, tighten as needed.
2. Replace any missing screw covers.

## TOW HITCH OPTION

(Quarterly or as needed)

1. Ensure plunger is operating properly, tighten as needed.
2. Ensure that tow bar pulls out freely, but does not come out of the cart; adjust set screw as necessary.
3. Clean tow hitch and tighten all fasteners as needed.

## **TRAY GUIDE TEST PROCEDURE**

1. The Retherm cart is equipped with two tray guides on each tray level.
2. Run your hand down each side of the cart touching each tray guide to verify the guides are securely fastened to the cart.
3. Repeat this procedure for all sets of tray guides.
4. Replace any broken or loose tray guides.

---

---

## HEATER ELEMENT FUNCTION CHECK

The following test procedure should only be performed by a qualified operator, maintenance technician, or an Aladdin authorized service agent.

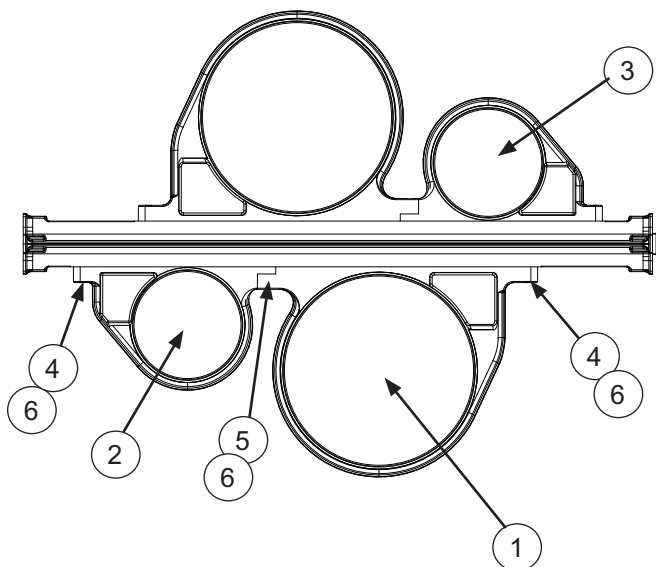
1. Activate the element magnetic switch by placing a magnetic metal (paper clips work well) on the raised portion of each heater element.
2. Connect the test cord set to the cart with the cord set in the off position. Connect the cart to 120v power supply (20amp) using a K258G20 test cord set. Watch for the light on the element to come on.  
NOTE: the brightness of the lamp may vary due to cycle sequence.  
Also Note: If the element light is on the heater is being energized and is being heated.
3. Switch the cord set to test position (1) to energize every other element level.
4. If the test light comes on the element is working. Do not touch heater element as it may cause a burn.
5. After checking the first set of alternating rows, switch the test cord to position three (3) to test the remaining elements (the other alternating rows).
6. After each element has been on for approximately ten (10) minutes. Switch test cord to middle position (off) and unplug test cord from wall.
7. Be sure to remove magnetic metal piece from the cart.
8. Replace any malfunctioning heater elements using the following procedure:

# C700 SERIES EXCEL™ CART

## HEATER ELEMENT REPLACEMENT PROCEDURE

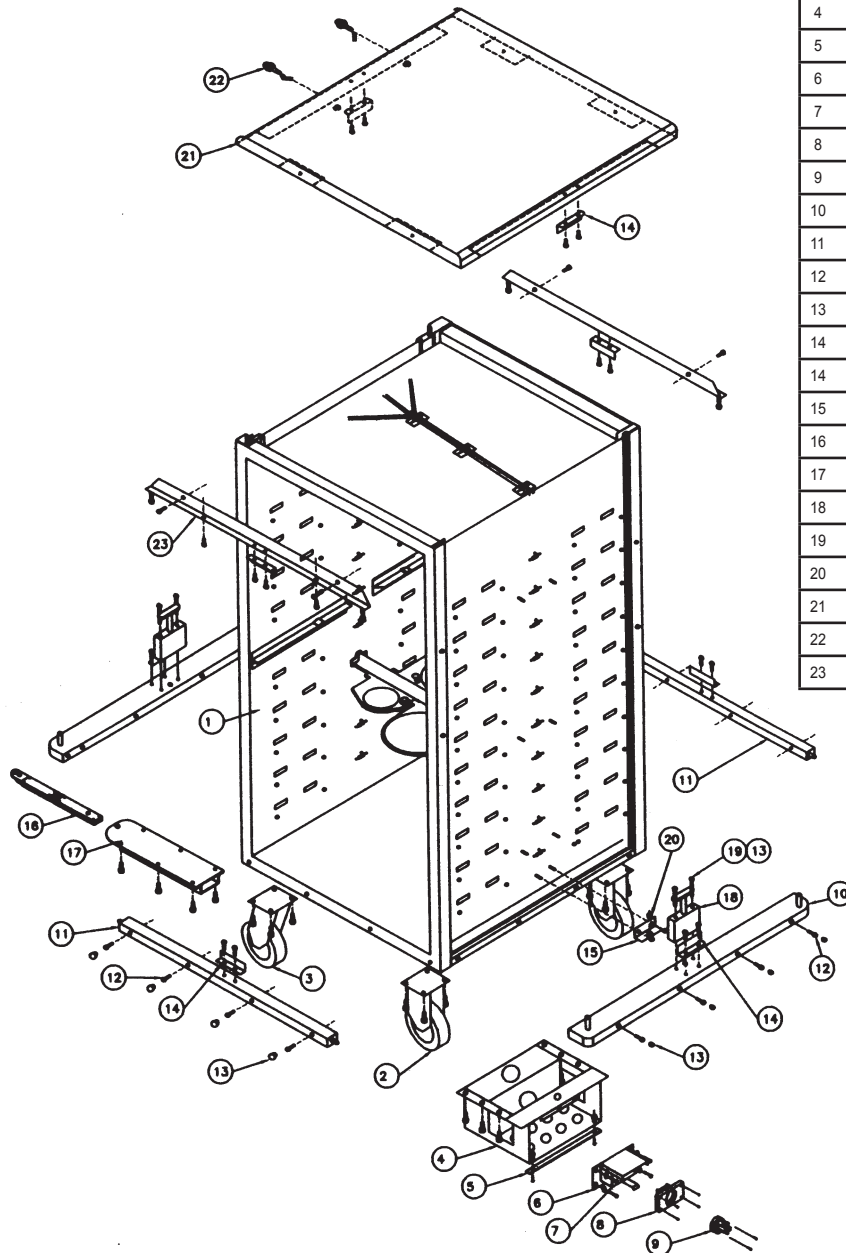
Make sure the power source is removed from the cart before attempting the element replacement procedure!

1. Remove the screw covers from the defective element.
2. Using a  $\frac{5}{32}$ " Allen wrench, remove the two screws holding the element to the crossbar.
3. After the screws are loose, gently pull the element away from the crossbar (pull out parallel to the floor). Note: Do not jerk or twist the element when removing it.
4. To install the new element, align the element and gently push it into place. Make sure the pins are properly aligned.
5. While firmly holding the element in place, align the screw holes and reinstall the screws. Make sure that the longer screw 10-32 x 1" is placed in the center where both elements are bolted together. Tighten using a  $\frac{5}{32}$ " Allen wrench.
6. Replace the screw covers.
7. Verify the operation of the new element by using the heater element function check. (See page 9)



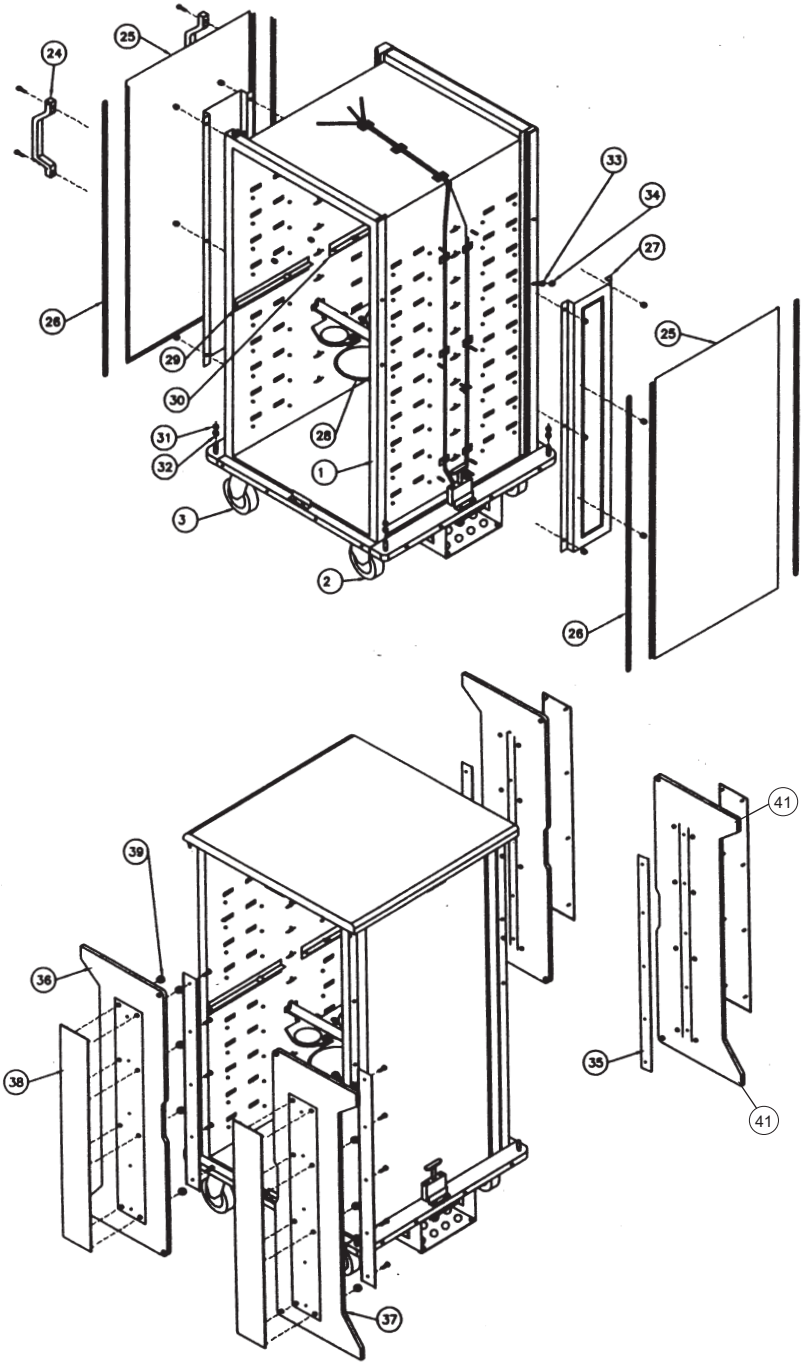
No.	Qty. Req'd.	Aladdin P/N	Description
1a	2	11116	7" Face-Mounted Entree Pod (Gray Top)
1b	-	96053	7" Face-Mounted Entree Pod (BlackTop)
2a	2	11115	3" Face-Mounted Soup Pod (Gray Top)
2b	-	96252	3" Face-Mounted Soup Pod (BlackTop)
3a	1	97654	Crossbar for 7"/3" Face-Mounted Pods
3b	-	93895	Crossbar for 7"/3" Face-Mounted Pods
4	4	34789	#10-32 X 3/4" S/S Bolt w/ Socket Hd, Nylock Coated
5	2	75378	#10-32 X 1" S/S Bolt w/ Socket Hd, Nylock Coated
6a	6	98176	Screw cover (Gray Top)
6b	-	94306	Screw cover (BlackTop)

# V. DRAWINGS/PARTS LIST



Item NO.	Part #	Description	Cart size	Quantity
1	92051	Tank, C716	16	1
1	92282	Tank, C720	20	1
1	92053	Tank, C724	24	1
2	94398	Caster, 8 inch ,rigid	ALL	2
3	94396	Direction Lock Plunger, for swivel caster	ALL	2
3	94397	Caster, 8 inch swivel, locking	ALL	2
4	92291	Box, plug mounting	ALL	1
5	92147	Bar, actuation - C7	ALL	1
6	39811	Weldment, slide base	ALL	1
7	11573	Box-J with holes	ALL	1
8	39326	Spacer, valox	ALL	1
9	39243	Plug, 14-30, 125V	ALL	1
10	92288	Bumper, base black- front/rear	ALL	2
11	92290	Bumper, base black-sides	ALL	2
12	92616	Bolt, 1/4-20x1", S/S, SHCS	ALL	16
13	92080	Plug, bumper, base, black	ALL	20
14	92300	Catch, S/S, magnetic door	ALL	8
14	92301	Catch, S/S, magnet w/o TW HT	ALL	2
15	92164	Bracket, wire protection	ALL	1
16	92056	Tongue, tow hitch, C7/C8	ALL	1
17	92292	Receiver, tow hitch, C7/C8	ALL	1
18	92058	Pin, spring, tow hitch, C7/C8	ALL	2
19	92082	Bolt 1/4-20x2.1/4", S/S SHCS	ALL	4
20	28291	Bushing, heyco	ALL	1
21	92283	Panel, cover, top, C7	ALL	1
22	93839	Light, indicator, red, 120V	ALL	2
23	92285	Weldment, top attach bracket	ALL	2

# C700 SERIES EXCEL™ CART



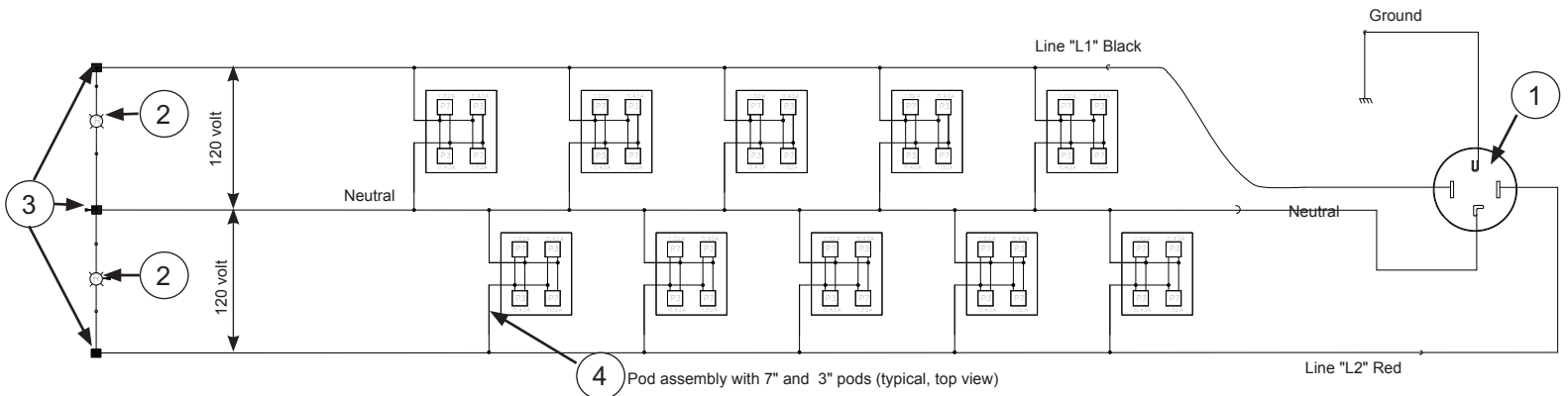
Item No.	Part #	Description	Cart Size	Qty.
24	34792	Handle, vertical, black	ALL*	2*
25	92296	Panel, cover, F/R, C716	16	2
25	92284	Panel, cover, F/R, C720	20	2
25	92297	Panel, cover, F/R, C724	24	2
26	92071	Strip, trim, black, slide, C716	16	4
26	92072	Strip, trim, black, slide, C720	20	4
26	92073	Strip, trim, black, slide, C724	24	4
27	92940	Wireway channel, C716	16	2
Previous	92085	SN C720B02494 and below	16	2
27	92941	Wireway channel, C720	20	2
Previous	92086	SN C720B02494 and below	20	2
27	92942	Wireway channel, C724	24	2
Previous	92087	SN C720B02494 and below	24	2
28	75412	Assy, pod, 7/3, 125V, FM	ALL	Varies
29	92565	Bracket, shelf support, 97 left	ALL	Varies
Previous	92074	SN C720B02494 and below	ALL	Varies
30	92565	Bracket, shelf support, 97 right	ALL	Varies
Previous	92075	SN C720B02494 and below	ALL	Varies
31	92059	Spacer, door, 1/4"	ALL	8
32	92305	Spacer, door, 1/16"	ALL	4
33	92451	Bolt, 1/4-20x3/4", S/S, BTN HD	ALL	4**
34	92444	Cover, screw, black, snap	ALL	4**
35	92097	Brace, door, C716	16	4
35	92098	Brace, door, C720	20	4
35	92099	Brace, door, C724	24	4
37	92100	Panel, door, C716, right	20	2
37	92101	Panel, door, C716, left	16	2
37	92104	Panel, door, C724, L/R	24	4
37	92105	Panel, door, C720, L/R	20	4
38	92094	Weldment, door decor, C716	16	4
38	92287	Weldment, door decor, C720	20	4
38	92096	Weldment, door decor, C724	24	4
39	98488	Plug, 3/4", cart door, C7	ALL	Varies
40	34992	Plug for handle	ALL	4
41	10841	Sleeve, door hinge	ALL	8

\*Quantity may be (4) four if four handle option was chosen.

\*\* Quantity may be (0) zero if four handle option was chosen.

# VI. WIRING DIAGRAMS

## 20 SHELF CART



Item No	Part #	Qty	Description
1	39243	1	30A 4 wire, male plug hubbell
2	93839	2	Red neon indicator light (125 voc, 1/2W)
3	24981	3	Insulated crimp snow cap
4	94362	12	Pod assembly
5	35126	20	self-stripping tap/run wire connector tap size: 18-24 AWG run size: 12-10 AWG 3M CAT. # 567
6	35203 Male 39921 Female	4	Male/Female disconnect terminals (T & B "sta-kons") wire range: 18-14 AWG
7	24984	3	#10 terminal ring equipment ground terminated to base wire range: 12-10 AWG
8	75018	9 Ft.	#10 AWG, stranded copper, 600 volt, type THHN/THWN wire, color code black
9	75017	9 Ft.	#10 AWG, stranded copper 600 volt, type THHN/THWN wire, color code red
10	75016	9 Ft.	#10 AWG, stranded copper 600 volt, type THHN/THWN wire, color code white

Item No	Part #	Qty	Description
11	67168	1 Ft.	#10 AWG, stranded copper 600 volt, type THHN/THWN wire, color code green
12	75021	1 Ft.	#18 AWG, stranded copper 600 volt, type TFFN wire color code black
13	34779	1 Ft.	#18 AWG, stranded copper 600 volt, type TFFN wire color code white
14	39237	24	tubing, heat shrink 3/4" black
15	39171	4	tubing, heat shrink 1/2" black

Note: AWG - America Wire Gauge

# C700 SERIES EXCEL™ CART

## VII. TROUBLESHOOTING

Performance problems often result from minor incidents that can be found and corrected by checking and following the basic points mentioned in the table below.

SYMPTOM	PROBABLE CAUSE	CORRECTION
Caster will not lock.	Debris pick up.	Clean
Poor rolling of caster.	Debris in swivel bearing of caster. Needs grease.	Clean Add grease at zerk fittings.
No electric power to cart/ cart present switch not showing on timer or touchscreen.	Cart not in refrigerator or cart stall. Breakers not on, in control panel or refrigerator. Cart actuation bar not aligned correctly. Improper alignment of floating plug to receptacle.  Faulty relay in panel. Faulty receptacle, or slide Weldment is bent. Faulty proximity switch.	Realign cart. Reset breakers. Make sure bar is bolted securely to cart. Check for correct plug alignment and shim rigid casters to properly align the plug with the cart receptacle. Repair and/or replace relay. Repair and/or replace receptacle. Repair switch on cart stall or refrigerator.
Trays hard to load into carts.	Damaged shelf support bracket.  Incorrect stacking of dishes, utensils, or domes.	Clean and/or replace damaged tray support bracket . Replace tray.
Entree or soup not hot at end of cycle.	Door safety switch has deactivated master  Dome not positioned properly. Tray is not fully in place. Heater element malfunction. High temp alarm on retherm has deactivated master relay.	Refrigerator (roll-in) door was opened during rethermalization. Close door and repeat rethermalization. Place dome on correctly. Adjust so that it is locked in place. Replace heater element. Refrigerator cabinet temperature too high contact authorized service agent.

## VIII. SERVICE

If you need assistance, call Aladdin's Toll Free Service Line, call 1-800-888-5426  
Please have the following numbers available:

Model Number: \_\_\_\_\_  
Serial Number: \_\_\_\_\_  
Purchase Date: \_\_\_\_\_

# IX. WARRANTY

## ALADDIN TEMP-RITE® EQUIPMENT LIMITED WARRANTY

\*The warranty term commences 30 days after Aladdin's invoice for the equipment.

Aladdin Temp-Rite® ("ATR") warrants to the original purchaser that the equipment listed below shall be free from defects in material and workmanship under normal use for the applicable warranty term set forth below. ATR's obligation under this warranty is limited to the repair or replacement, at the sole option of ATR, of any part which upon inspection and examination by ATR or its authorized agent is found to be defective. A written description detailing the nature of the claimed defect, together with the equipment claimed to be defective if required by ATR, must be delivered to ATR or its authorized agent within 30 days of discovery of the claimed defect (but in no event later than 30 days after the expiration of the applicable warranty term).

EQUIPMENT TEMP-RITE II EXCEL CARTS	WARRANTY TERM*	
	PARTS	LABOR
C716DTKD	5 YEARS	1 YEAR
C720DTKD	5 YEARS	1 YEAR
C724DTKD	5 YEARS	1 YEAR
HEATER ELEMENTS	2 YEARS	N/A

\*The warranty term commences 30 days after Aladdin's invoice for the equipment.

THE WARRANTIES AND REPRESENTATIONS OF ATR CONTAINED HEREIN ARE EXPRESSLY IN LIEU OF, AND THE BUYER WAIVES, ANY AND ALL OTHER WARRANTIES EXPRESS OR IMPLIED, INCLUDING THE WARRANTIES OF MERCHANTABILITY AND FITNESS FOR A PARTICULAR PURPOSE, AND ANY OTHER REMEDIES AGAINST ATR, WHETHER BASED UPON CONTRACT, NEGLIGENCE STRICT LIABILITY OR OTHERWISE. ALADDIN SHALL NOT BE LIABLE FOR ANY CONSEQUENTIAL OR INCIDENTAL DAMAGES OR ECONOMIC LOSS OF ANY NATURE (INCLUDING WITHOUT LIMITATION LOSS OF REVENUES AND/OR PROFITS) THAT MAY BE CLAIMED TO RESULT FROM ANY NEGLIGENCE OR BREACH OF WARRANTY OR CONTRACT BY ATR.

### Exceptions and Exclusions

This warranty is issued only to the original purchaser, and is not transferable and applies only to the products installed within the United States of America, its territories and Canada. During the term of any labor warranty, ATR will pay all preapproved shipping charges incurred in returning defective equipment to ATR and labor costs incurred in the removal and reinstallation of such equipment. Contact ATR before returning any claimed defective equipment or otherwise performing warranty repairs. ATR assumes no liability for any work or repair performed without its prior approval. After the expiration of any labor warranty, the original purchaser is responsible for all shipping charges incurred in returning defective equipment to ATR and labor for removing and reinstalling such equipment. ATR shall not be responsible for the replacement of expendable items like lamps and fuses or product failure resulting from normal wear and tear, improper installation, misuse, sabotage, abuse, neglect, accident, unauthorized alterations or repair, or other factors beyond the control of ATR. Neither this warranty nor the liability of ATR may be modified or extended by action of any agent, distributor or other person or by custom or practice.

CALL ALADDIN TEMP-RITE® TOLL FREE AT 1-800-888-5426 IF YOU HAVE ANY QUESTIONS  
ABOUT THIS WARRANTY OR YOUR ATR PRODUCT.



250 East Main Street, Hendersonville, TN 37075

1-800-888-8018 • [www.aladdintemprite.com](http://www.aladdintemprite.com) • [info@aladdin-atr.com](mailto:info@aladdin-atr.com)