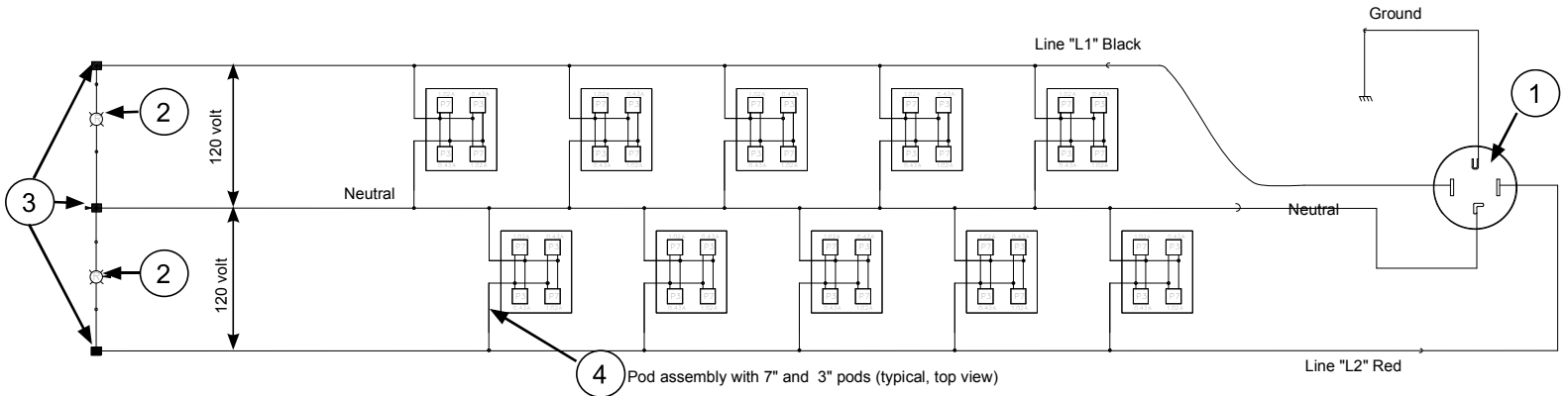


VI. WIRING DIAGRAMS

20 SHELF CART



Item No	Part #	Qty	Description
1	39243	1	30A 4 wire, male plug hubbell
2	93839	2	Red neon indicator light (125 voc, 1/2W)
3	24981	3	Insulated crimp snow cap
4	94362	12	Pod assembly
5	35126	20	self-stripping tap/run wire connector tap size: 18-24 AWG run size: 12-10 AWG 3M CAT. # 567
6	35203 Male 39921 Female	4	Male/Female disconnect terminals (T & B "sta-kons") wire range: 18-14 AWG
7	24984	3	#10 terminal ring equipment ground terminated to base wire range: 12-10 AWG
8	75018	9 Ft.	#10 AWG, stranded copper, 600 volt, type THHN/THWN wire, color code black
9	75017	9 Ft.	#10 AWG, stranded copper 600 volt, type THHN/THWN wire,color code red
10	75016	9 Ft.	#10 AWG, stranded copper 600 volt, type THHN/THWN wire,color code white

Item No	Part #	Qty	Description
11	67168	1 Ft.	#10 AWG, stranded copper 600 volt, type THHN/THWN wire,color code green
12	75021	1 Ft.	#18 AWG, stranded copper 600 volt, type TFFN wire color code black
13	34779	1 Ft.	#18 AWG, stranded copper 600 volt, type TFFN wire color code white
14	39237	24	tubing, heat shrink 3/4" black
15	39171	4	tubing, heat shink 1/2" black

Note: AWG - America Wire Gauge