

**Aladdin Temp-Rite**® ...better by degrees.

P.O. Box 2978, Hendersonville, TN 37077-2978  
1-800-888-8018 or 615-537-3600  
Fax 1-888-812-9956  
www.aladdintemprite.com



# **CONVECT-RITE® CART**



**Convect-Rite®**  
**Distribution Cart**  
*Mini 20 Meal Cart*  
*Mini 24 Meal Cart*  
*Junior 24 Meal Cart*  
*Senior 26 Meal Cart*  
*Senior 30 Meal Cart*  
*Select Carts*  
*SP Carts*

---

Manual P/N 11067  
Rev. E 11/29/2017

INSTALLATION, OPERATION & SERVICE MANUAL

---

---

---

**Copyright © 2007 Aladdin Temp-Rite®**

**Changes may be made to the information in this document without notification.**

---

---

# CONTENTS

---

---

<b>I. INTRODUCTION</b>	<b>4</b>
Convect-Rite Cart	5
Serial / product information plate	5
<b>II. RECEIVING INSPECTIONS</b>	<b>6</b>
<b>III. PREVENTIVE MAINTENANCE</b>	<b>7</b>
Introduction	7
Removing Auto-Therm Seals	9
Operator's Troubleshooting guide	10
Convect-Rite cart Troubleshooting	11
<b>IV. PARTS LIST &amp; ILLUSTRATION</b>	<b>12</b>
Convect-Rite Mini Cart 20/24 Meal Parts List	12
Convect-Rite Junior (3.5" spc) Cart 24 Meal Parts List	14
Convect-Rite Senior Cart 26/30 Meal Parts List	16
Convect-Rite Tow Hitch Parts List (Option)	18
<b>V. WARRANTY &amp; LIABILITY</b>	<b>19</b>

## I. INTRODUCTION

---

### Convect-Rite® Cart

The Convect-Rite Cart is a double-sided Cart with two opposing doors opening at a 270° angle. Special door catches keep them in the open-position to make service and cleaning easier. Trays are accessible on both ends. Depending on the model, ten, twelve, thirteen or fifteen trays are available on each end of the Cart.

The Convect-Rite Cart is vertically divided into two sections by an insulated center panel made of high temperature plastic material with slots, into which the trays can slide in and out. The compartments correspond respectively to the cold and hot chambers of the Convect-Rite Docking Station.

One tray is divided and is reversible; providing a larger section for either hot or cold food as needed. A second larger tray is symmetrical and is undivided allowing more flexibility in movement of items on the tray after removal from the cart.

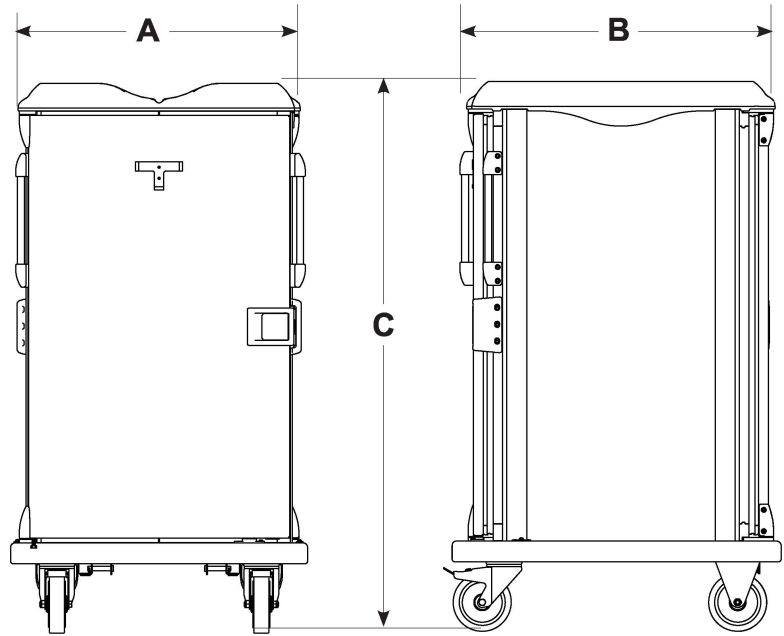
**IMPORTANT NOTE:** Avoid carrying heavy loads on the plastic top of the Convect-Rite Cart. This could damage the plastic top as well as the casters. Do not stand on the plastic lower bumper.

### MODELS

This manual covers the standard models for the Convect-Rite Cart that accommodates 20/24 or 26/30 meals depending on the unit. Information for the Convect-Rite System is listed in the following pages.

# Convect-Rite® Cart

Convect-Rite	Mini		Junior	Senior		DIM
	20 Trays	24 Trays	24 Trays	26 Trays	30 Trays	
TRAY CAPACITY	20 Meal	24 Meals	24 Meals	26 Meals	30 Meals	
TRAY SPACING	3.6" (9.14 cm)	3.1" (7.874 cm)	3.5" (8.89 cm)	3.5" (8.89 cm)	3.1" (7.874 cm)	
WIDTH	32.125" (81.6 cm)	32.125" (81.60 cm)	32.125" (81.60 cm)	32.125" (81.60 cm)	32.125" (81.60 cm)	A
LENGTH/DEPTH	35.56" (90.32 cm)	35.56" (90.32 cm)	35.56" (90.32 cm)	35.56" (90.32 cm)	35.56" (90.32 cm)	B
HEIGHT	54.63" (138.8 cm)	54.63" (138.8 cm)	59.5" (151.1 cm)	64" (162.6 cm)	64" (162.6 cm)	C
WEIGHT	337 lb (152.7 kg)	337 lb (152.7 kg)	390 lb (176.9 kg)	403 lb (182.8 kg)	403 lb (182.8 kg)	
SHIPPING WEIGHT	357 lb (161.9 kg)	357 lb (161.9 kg)	410 lb (186 kg)	423 lb (191.9 kg)	423 lb (191.9 kg)	
Cart TURNING RADIUS	41.75" (106 cm)					



## SERIAL / PRODUCT INFORMATION PLATES

During manufacture, Convect-Rite Carts are assigned individual serial numbers. The information data plate for the Cart is located inside on the top of the cold chamber. The product information plate lists the model number, serial number, part number, manufacturing date, and ETL sanitation listed mark.



## **II. RECEIVING INSPECTIONS**

---

Your Aladdin Convect-Rite Cart is factory tested for performance and is free from defects when shipped. The utmost care has been taken in packaging this product to protect against damage in transit. All interior fittings have been secured to prevent damage.

The purchaser/user has the best knowledge and is in the best position to determine the operating conditions, appropriateness of the product for the operating environment, and safe use of the product. Aladdin Temp-Rite does not warrant, implied or expressly, that the product is fit for a particular use or operating environment.

You should carefully inspect your Convect Rite Cart to assure that no damage has occurred in transit. If however, damage is detected, you should save all the packaging materials and make note on the carrier's Bill of Lading describing this shipment. A freight claim should be filed immediately. If damage is subsequently noted during or immediately after installation, contact the respective carrier and file a freight claim. Under no condition may a damaged unit be returned to Aladdin Temp-Rite without first obtaining written permission (return authorization).

### **PACKAGING:**

Your Convect Rite Cart is packaged with care and shipped on dedicated carriers to you from the factory.

### **ALADDIN DAMAGED GOODS POLICY**

There are two types of damaged merchandise:

- Visual Damage
- Concealed Damage

Visual Damage – When the product being received is visibly damaged.

1. Receiver should not accept merchandise with visual damage.
2. Receiver must sign delivery receipt "refused merchandise due to damage" and specify damage.
3. Receiver should call Aladdin Customer Service immediately after refusal.
4. Carrier will notify Aladdin Traffic Department and a claim will be filed.
5. Carrier will send acknowledgement of claim within 7 days after receiving.

Concealed Damage – When damaged merchandise cannot be externally detected.

Any receiving operation should be looking for this type of damage. Sometimes, however, depending on the type of product, it is almost impossible to notice.

1. Merchandise must not be removed from point of delivery and all packaging must be kept intact.
2. Receiver must contact Aladdin customer service to report damage.
3. Aladdin traffic department will request inspection based on the dollar value of the cargo.
4. Aladdin traffic department will file a claim based on the findings of the inspection.

Failure to comply with these policies will result in the customer's responsibility to file claims.

---

---

# III. PREVENTIVE MAINTENANCE

---

## INTRODUCTION

Maintenance on the Convect-Rite cart must be performed on a regular basis to keep the units operating properly. Follow the maintenance instructions in this chapter to get the best ongoing performance from your Convect-Rite cart. If problems do occur, refer to the Troubleshooting Guide.

**Caution** Do not lean the Convect-Rite cart on one door to allow draining water, this can result in damage to door pivots and hinges.

## Convect-Rite Cart

### Daily

- Aladdin recommends that the Convect-Rite cart be hose washed with a hose and spray nozzle. The water pressure should not exceed 45 PSI at the nozzle and the nozzle should be kept at least 5" away from the cart surface being washed. **Caution:** Higher pressure may cause damage to the silicone rubber gaskets, silicone sealant and other components. Water temperature should not exceed 185 degrees F.
- **Caution:** If the cart is to be placed into an automatic cart wash, the water pressure should not exceed 45 PSI at the nozzle and the nozzle should be at least 5" away from the Cart surface being washed. The nozzle should be a flat fan design with at least a 50 degree spray angle. Water temperature should not exceed 185 degrees F and the blow dryer temperature should not exceed 200 degrees F.
- **Caution:** Never use cleaning agents that contain phosphates or chlorides. These chemicals will cause permanent damage to the stainless steel finish, or plastic components and void equipment warranty. Any chemical used in the cleaning process for Convect-Rite carts should be applied in the proper concentration. Concentrations higher than recommended by the supplier can contribute to breakage and premature failure of the plastic components within the cart.
- Convect-Rite carts should not be steam cleaned.
- Air-drying the Convect-Rite cart inside and out is recommended after every cleaning. Air pressure not to exceed 45 PSI should be installed in the vicinity of the cart washing area. A hose with an air spray tube 19.7"/50 cm in length should be used to dry the cart. This tube is needed to reach hard to access areas such as behind the air deflector panels next to the outer walls of the cart tank interior. The tube should be kept at least 5" away from the surface of the cart being dried. Air temperature should not exceed 185 degrees F.

## Monthly

- Check door hinges, latches and catches. Adjust if necessary.
- Inspect door gaskets, replace if necessary.
- Inspect vertical center panel and verify panel has not become loose. If so, tighten screws and nuts.
- Check wheels for strings, threads, trash, etc.

## Periodically

### Exterior

- Your carts should receive a thorough cleaning to assure proper operation and sanitation.
- Check hinges and tighten all screws as needed.
- Check door handle and latch, repair or replace as needed.
- Check door safety catches lubricate or replace as needed.
- Check casters, clean mop strings, hairnets, and debris from wheels. Replace as needed
- Lubricate casters if applicable

### Interior

- If your Convect-Rite carts are equipped with Auto-Therm Seals these seals should be removed and washed in your dishwasher. It is important that the sealing devices be free of debris, dried food or soiled food/beverage so that it can move freely and function properly. Any broken seals should be removed from service and replaced with new seals.
- While the seals are removed for cleaning the center panel should be thoroughly cleaned on both sides and be free of debris, dried food or soiled food/beverage. **Caution:** close attention should be paid to the cleaning chemical concentrations and rinse procedures. Some cleaning chemicals, if not diluted properly, can be damaging to the plastic components within the cart including the Auto-Therm Seals, center panel and center panel tracks. Check with your chemical supplier to determine the cleaning chemicals that are appropriate for cleaning these carts.
- Tighten all screws fastening interior panels to cabinet as needed.
- Check interior panels for breaks or cracks. Replace or repair if needed.

### Door Gaskets

- Visually check door gaskets.
- Visually check that the gaskets are sealed in their retainers and inspect for wear and tear. Replace if gaskets are torn.
- Check Center gaskets reinsert or replace as needed.

---

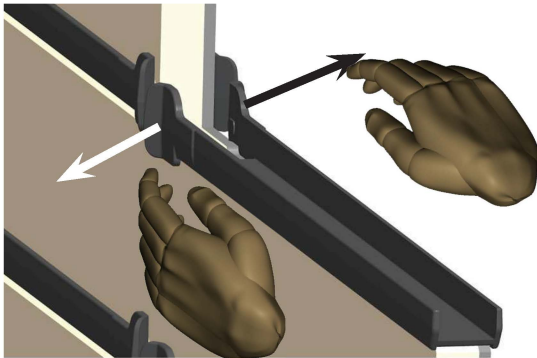
---

## Removing Auto-Therm Seals

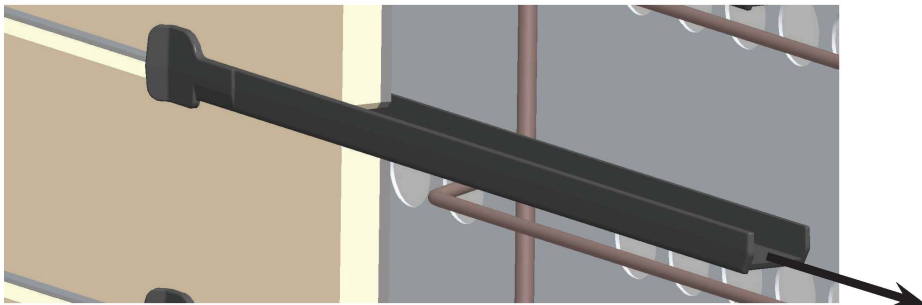
- 1) Lock casters
- 2) Open both doors of the cart



- 3) Reach into cart with one hand on each side of the center wall
- 4) Gently pull the tabs outward (excessive force may cause tabs to break)

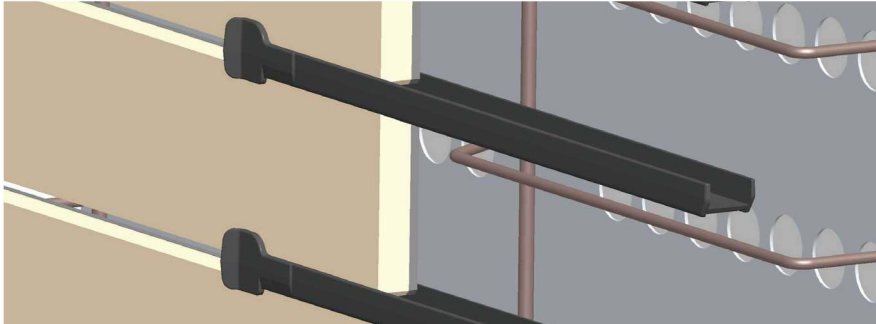


- 5) Gently slide out the seal



## Installing Auto-Therm Seals

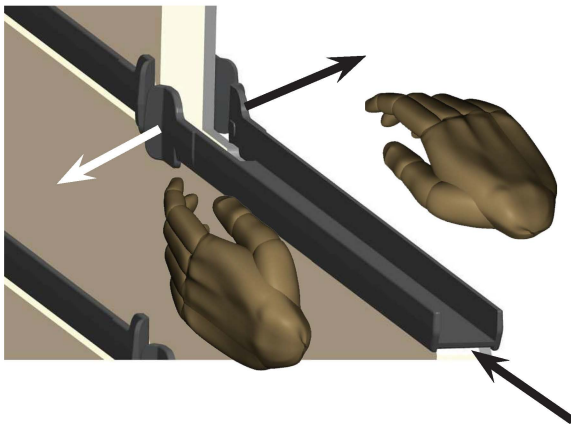
1) Place seal in slot with tabs towards the center of the cart



2) Gently push in until seal stops



3) Gently pull tabs outward and click seal into place (excessive force may cause tabs to break)



## OPERATOR'S TROUBLESHOOTING GUIDE FOR OPERATIONAL SAFETY

This troubleshooting guide includes a list of conditions that may be encountered during routine operation and maintenance. The first column on the left describes these symptoms. The second column in the middle lists the causes for the conditions listed in column one. The third column on the right lists remedies and/or references for the conditions and causes in columns one and two.

**DO NOT TRY** to correct the condition that requires an authorized service representative as this may adversely affect the warranty coverage.

## Convect-Rite cart Troubleshooting

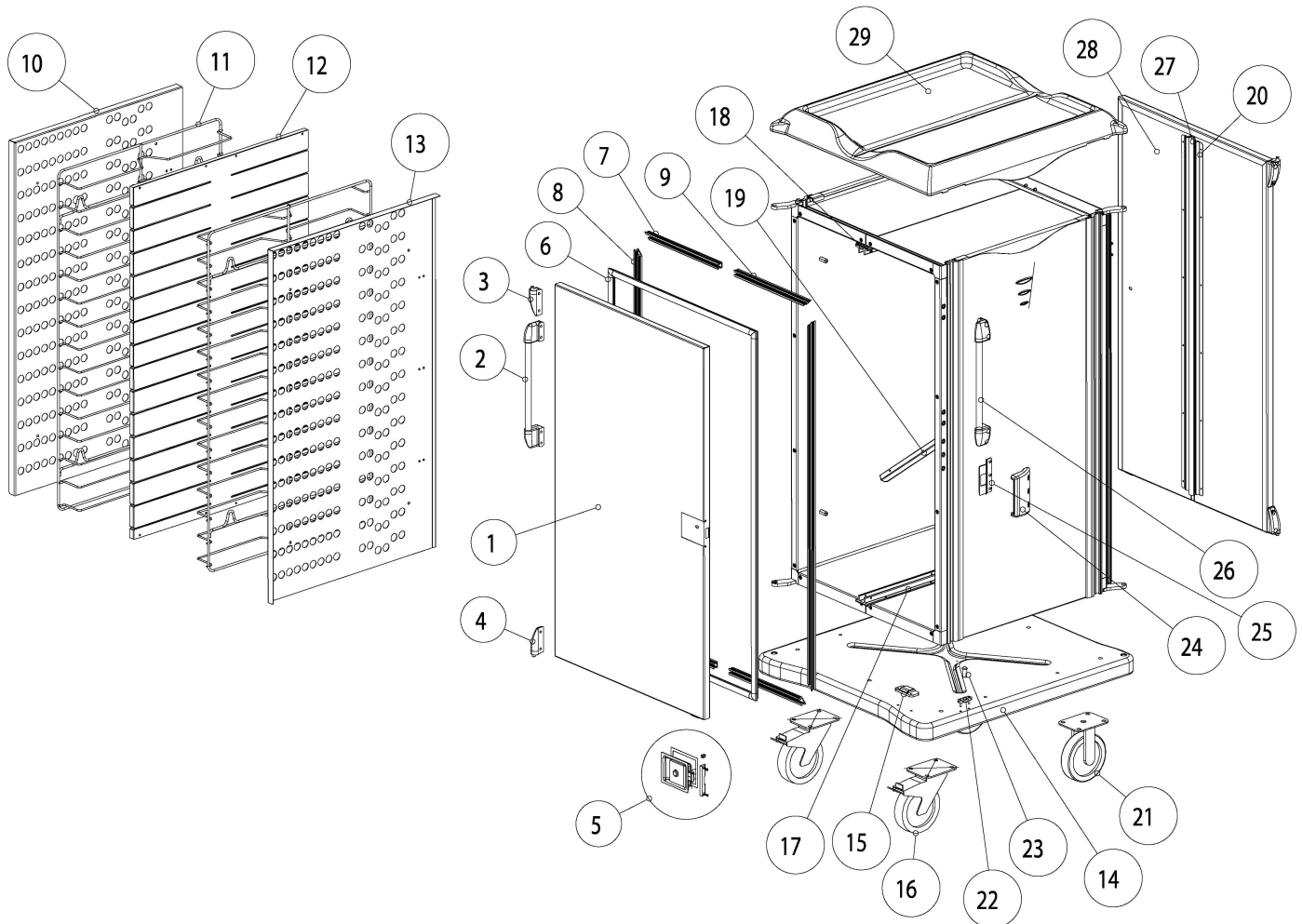
<b>Condition is occurring when:</b>	<b>Condition/symptom:</b>	<b>Solutions and things to check:</b>
<i>Engaging the cart to the docking station.</i>	Gap exist between cart and dock when cart is engaged.	Adjust appropriate dock feet to close gap
	Cart does not depress one or both switches	Check that the dock is parallel to cart interface.
<i>Loading trays</i>	Tray does not slide into slot	Check that the tray is not warped or damaged
<i>Shutting doors</i>	Doors on cart won't close	Tray not completely pushed in
		Check latch and door alignment
		Check gasket fit
<i>Keeping Cart door open</i>	Door not engaged in detent latch	Push door completely to the side of the cart (270°)
		Check that door at hinge is completely seated
		Check that no debris is around detent latch
<i>Engaging cart to docking station</i>	Cart doesn't engage	Check that dockside door is open
		Check that dock is secured against the wall
		Check that dock is level
		Check that the optional safety doors on the docking station are not closed
		Check that the side of the cart with the locking casters is facing away from the dock
		Check that the dock is at the appropriate height for the cart
	Doesn't show cart engaged	Check micro switch position (see section III for location)
		Check "on/off" switch
		Check safety switches
		Check unit breaker in control panel
		Check all wiring is properly seated
		Check plug or junction box

## IV. PARTS LIST & ILLUSTRATION

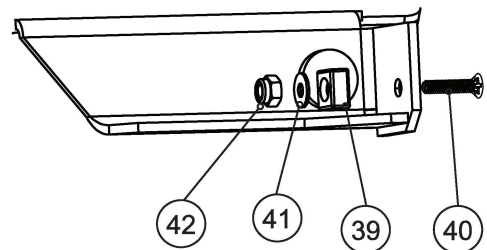
### Convect-Rite Mini Cart 20/24 Meal Parts List

#	ITEM#	DESCRIPTION
1	10874	Door Assy Front
2	11065	Handle Assy - Door
3	10753	Door Hinge - Top
4	10754	Door Hinge - Btm
5	96503	Door Latch Kit
6	10859	Frame Gasket
7	96565	Holder Gasket, Horz. A
8	10855	Holder, Gasket, Vert.
9	96566	Holder, Gasket, Horz. B
10A	10852	Plenum Hot Side 20 Meal (3.6" spc)
10B	10928	Plenum Hot Side 24 Meal (3.1" spc)
10C	11904	Plenum Hot Select mini
10D	12774	Plenum Hot SP mini
11A	10854	Tray Guides 20 Meal (3.6" spc)
11B	10930	Tray Guides 24 Meal (3.1" spc)
11C	11902	Tray Guide Select hot (3.6" spc)
11D	11901	Tray Guide Select cold (5.25" spc)
11E	12772	Tray Guide SP mini (3" spc)
12A	10887	Center Wall 20 Meal 3.6" spc, Auto-Therm, Divided Tray
12B	10870	Center Wall 20 Meal 3.6" spc, Auto-Therm, Undivided Tray
12C	10888	Center Wall 24 Meal 3.1" spc , Auto-Therm, Divided Tray
12D	10886	Center Wall 24 Meal 3.1" spc, Auto-Therm, Undivided Tray
12E	11900	Center Wall Mini Select & SP cart
13A	10853	Plenum Cold Side 20 Meal (3.6" spc)
13B	10929	Plenum Cold Side 24 Meal (3.1" spc)
13C	11903	Plenum Cold Side Select cart
13D	12775	Plenum Cold Side SP cart
14	96544	Bumper/Base - Plastic
15	96651	Door Support
16	96541	Caster - Swivel
17	99809	Center wall guide
18	96584	Guide Filler
19	96613	Deflector
20	10858	Gasket Guard
21	96539	Caster - Fixed

#	ITEM#	DESCRIPTION
22	96598	Plunger Plate
23	96505	Plunger - Spring
24	10755	Cover - Strike
25	96562	Plate - Strike
26	11066	Handle Assy - Cabinet
27	10860	Door Gasket
28	10872	Door Back
29	96504	Top - Plastic
30*	99631	Static Strip
31*	92591	Hinge & Handle Plug
32*	97799	Shim for door
33*	96569	Latch
34*	96578	Latch with keyed lock
35*	10595	Auto-Therm Seal
36*	99810	Teflon center wall insulator
37*	99687	Center wall gasket
38*	11021	Acorn nut guard
39	10635	Square magnet
40	12536	Screw 8-32x3/4" countersink
41	96748	Flat washer #8 SS
42	94406	Nylock nut 8-32 SS
43*	12769	key for locking latch
*Item NOT shown		



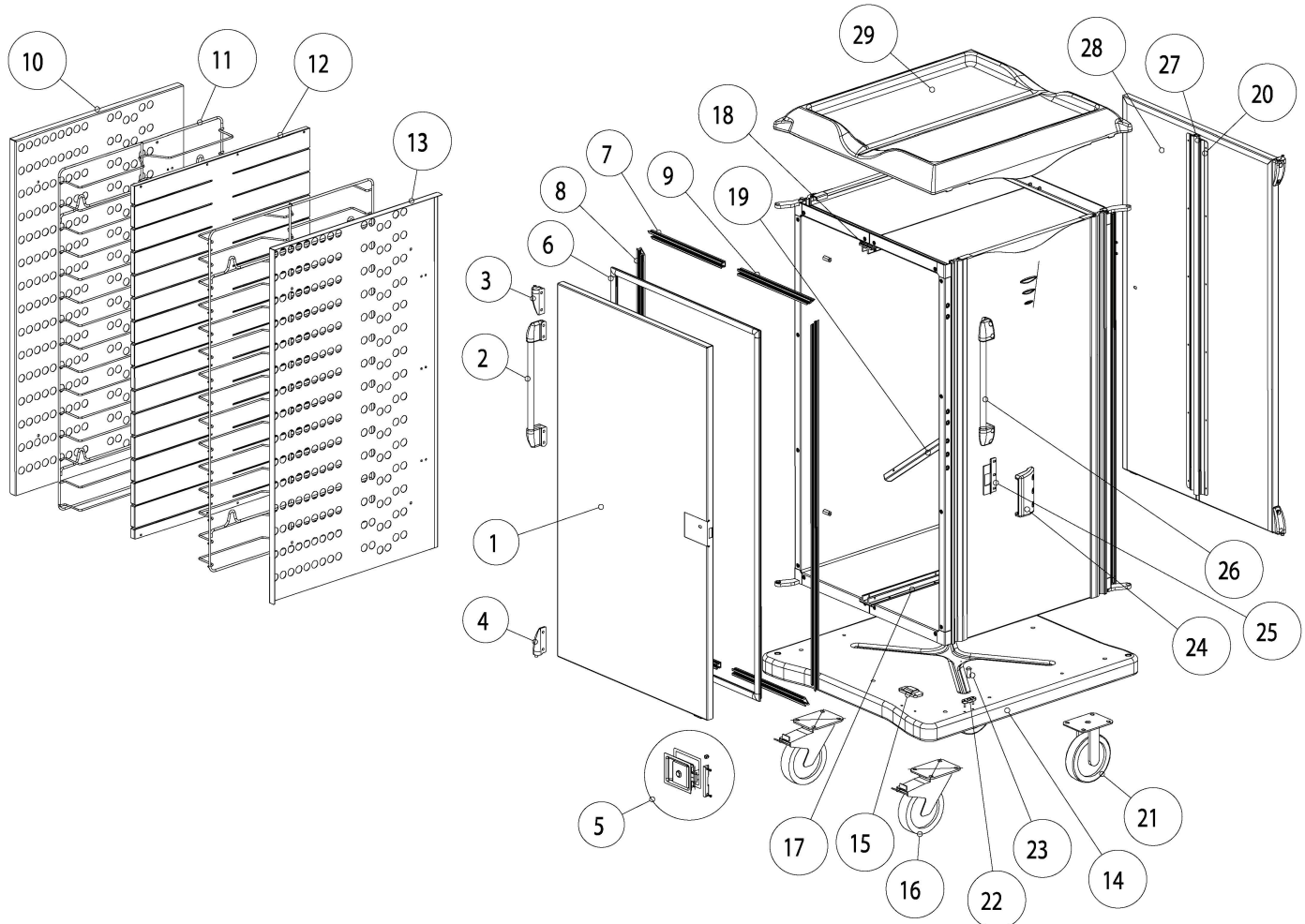
**Autodock magnet**



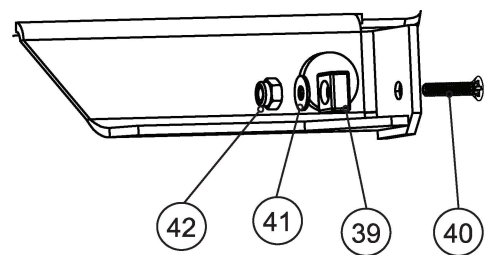
## Convect-Rite Junior (3.5" spc) Cart 24 Meal Parts List

ITEM#	PART#	DESCRIPTION
1	96610	Door Assy - Front
2	96502	Handle Assy - Door
3	10753	Door Hinge - Top
4	10754	Door Hinge - Btm
5	96503	Door Latch Kit
6	98187	Frame Gasket
7	96565	Extrusion, Gasket, Horz. A
8	96564	Extrusion, Gasket, Vert.
9	96566	Extrusion, Gasket, Horz. B
10A	96532	Plenum Hot Side
10B	12776	Plenum Hot Side SP cart
11A	96534	Tray Guides
11B	98956	Tray Guide Select cold (5.04" spc)
11C	98957	Tray Guide Select hot (3.5" spc)
11D	12773	Tray Guide SP JR (3.2" spc)
12A	99677	Auto-Therm Divided Tray center wall
12B	99678	Auto-Therm Undivided Tray center wall
12C	10772	Center Wall JR Select & SP cart
13A	96533	Plenum Cold Side
13B	12777	Plenum Cold Side SP cart
14	96544	Bumper/Base - Plastic
15	96651	Door Support
16	96541	Caster - Swivel
17	99809	Center wall guide

ITEM#	PART#	DESCRIPTION
18	96584	Guide Filler
19	96613	Deflector
20	96579	Gasket Guard
21	96539	Caster - Fixed
22	96598	Plunger Plate
23	96505	Plunger - Spring
24	10755	Cover - Strike
25	96562	Plate - Strike
26	96517	Handle Assy - Cabinet
27	98188	Door Gasket
28	96609	Door Assy - Back
29	96504	Top - Plastic
30*	97785	Static Strip
31*	92591	Hinge & Handle Plug
32*	97799	Shim for door
33*	96569	Latch
34*	96578	Latch with keyed lock
35*	10595	Auto-Therm Seal
36*	99810	Teflon center wall insulator
37*	99687	Center wall gasket
*Item NOT shown		



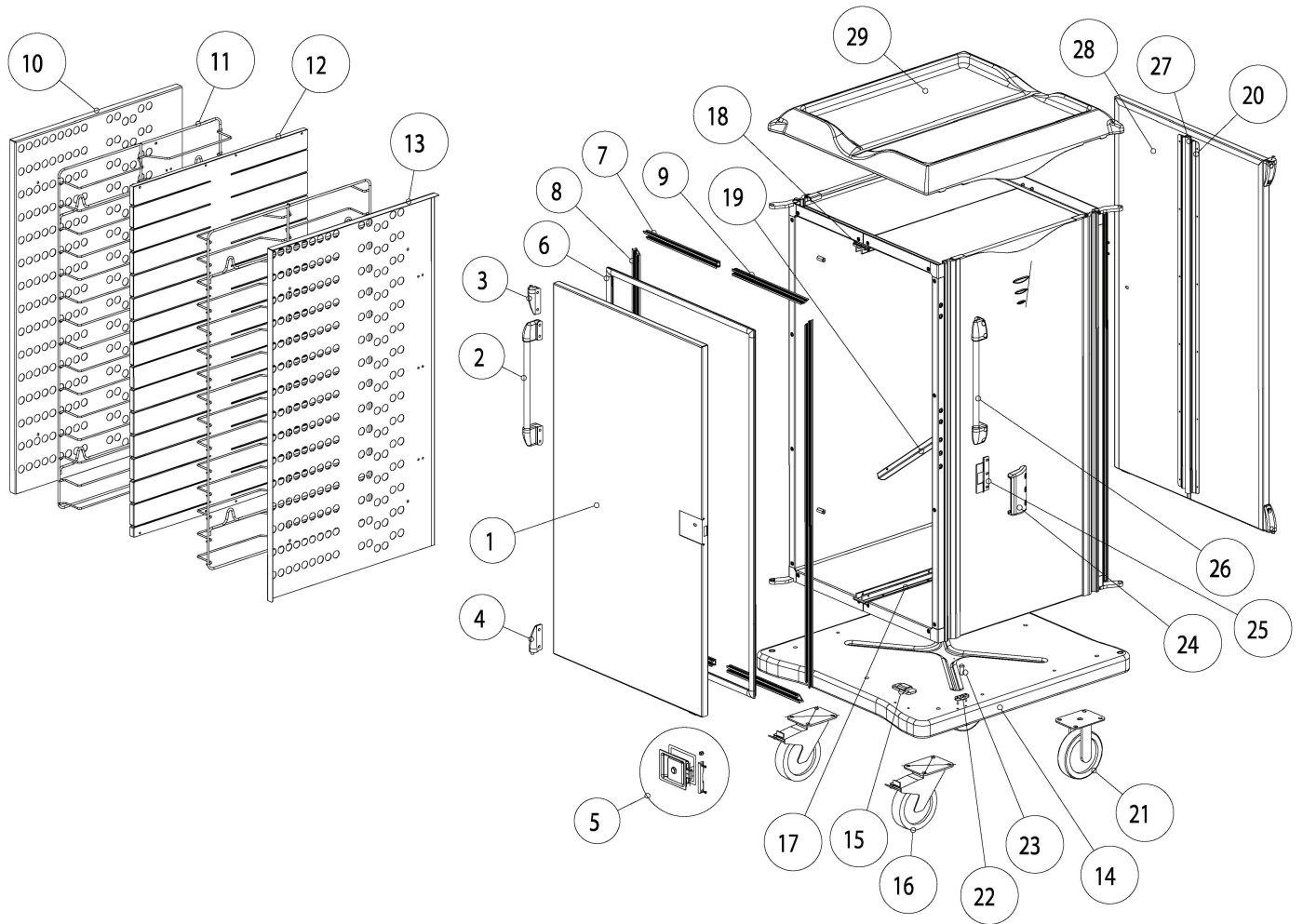
**Autodock magnet**



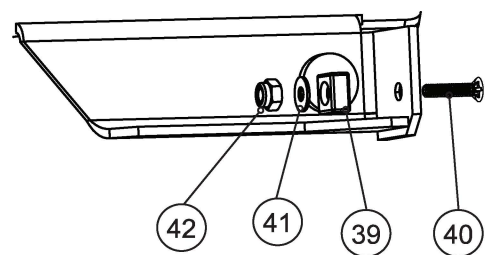
## Convect-Rite Senior Cart 26/30 Meal Parts List

ITEM#	PART#	DESCRIPTION
1	96635	Door Assy - Front
2	96658	Handle Assy - Door
3	10753	Door Hinge - Top
4	10754	Door Hinge - Bottom
5	96503	Door Latch Kit (nonlocking)
6	98185	Frame Gasket
7	96565	Extrusion, Gasket, Horz. A
8	96621	Extrusion, Gasket, Vert.
9	96566	Extrusion, Gasket, Horz. B
10a	96618	Plenum Hot Side 30 meal
10b	11290	Plenum Hot Side 26 meal
10c	99656	SP senior plenum hot
11a	96620	Tray Guides 30 meal
11b	11289	Tray Guides 26 meal
11c	99658	Tray Guide SP JR (2.9" spc)
11d	11094	Tray Guide Select hot (3.1" spc)
11e	11095	Tray Guide Select cold (5.04" spc)
12a	99679	30 meal Auto-Therm Divided Tray Center Wall
12b	99676	30 meal Auto-Therm Undivided, Tray Center Wall
12c	11250	26 meal Auto-Therm Divided Tray Center Wall
12d	11251	26 meal Auto-Therm Undivided, Tray Center Wall
12e	10773	SP Senior Center wall
13a	96619	Plenum Cold Side 30
13b	11291	Plenum Cold Side 26
13c	99657	SP Senior plenum Cold
14	96544	Bumper/Base - Plastic
15	96651	Door support
16	96541	Caster - Swivel
17	99809	Center wall guide
18	96584	Guide Filler
19	96613	Deflector
20	96627	Gasket Guard
21	96539	Caster - Fixed
22	96598	Plunger Plate
23	96505	Plunger - Spring

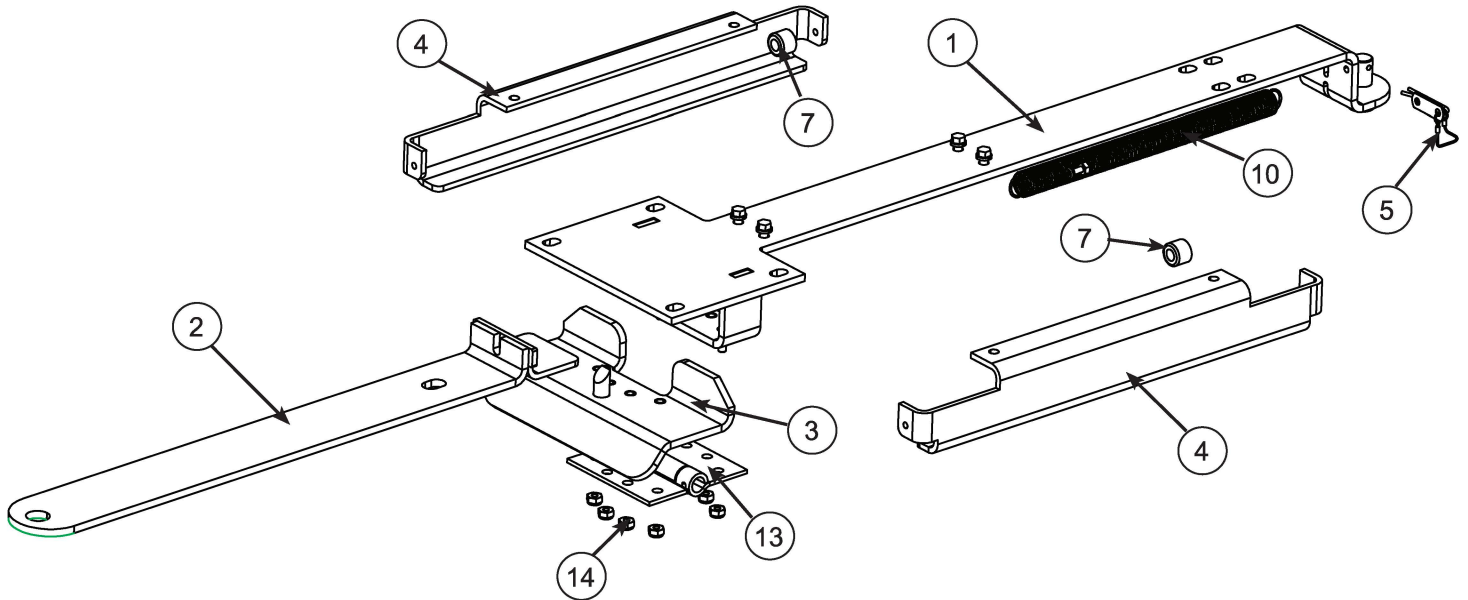
ITEM#	PART#	DESCRIPTION
24	10755	Cover - Strike
25	96562	Plate - Strike
26	96657	Handle Assy - Cabinet
27	98186	Door Gasket
28	96633	Door Assy - Back
29	96504	Top - Plastic
30*	99631	Static strip
31*	92591	Hinge & Handle Plug
32*	97799	Shim for door
33*	96569	Latch
34*	96578	Latch with keyed lock
35*	10595	Auto-Therm seal
36*	99810	Teflon center wall insulator
37*	99687	Center wall gasket
38*	11021	Acorn nut guard
39	10635	Square magnet
40	12536	Screw 8-32x3/4" countersink
41	96748	Flat washer #8 SS
42	94406	Nylock nut 8-32 SS
43	12769	key for locking latch
*Item NOT shown		



**Autodock magnet**



## Convect-Rite Tow Hitch Parts List (Option)



ITEM#	PART#	DESCRIPTION	Qty
1	96531	Weldment	1
2	96528	Tongue assembly	1
3	96542	Foot Pedal	1
4	96537	Tongue Retainer	2
5	93877	Cotter Pin with Lanyard	1
6*	98059	Screw,10-32x 3/4 ,Pan, SS (for lanyard to cart)	1
7	96656	Bumper	2
8*	98059	Screw,#10-32 x 0.75", SS (for bumpers)	2
9*	21016	Nylock Nut#10-32, SS (for bumpers)	2
10	96520	Spring	1
11*	28305	Bolt 1/4-20 x 0.75, SS (for item 4 tongue retainer)	4
12*	28331	Lock Washer 1/4" (for item 4 tongue retainer)	4
13	96648	Spring Hinge	1
14	39321	Nylock Nut 1/4-20, SS (for foot pedal)	8
15*	39619	Nut, 3/8-16, Hex, SS (for attachment to cart)	6
16*	93205	Washer, flat, 3/8" SS (for attachment to cart)	6
17*	96592	Bolt, 3/8-16 x 1, SS (for attachment to cart)	6
*Item NOT shown			

---

---

# V. WARRANTY & LIABILITY

ALADDIN TEMP-RITE  
EQUIPMENT  
LIMITED WARRANTY

Effective May, 2007

Aladdin Temp-Rite ("ATR") warrants to the original purchaser that the equipment listed below shall be free from defects in material and workmanship under normal use for the applicable warranty term set forth below. ATR's obligation under this warranty is limited to the repair or replacement, at the sole option of ATR, of any part which upon inspection and examination by ATR or its authorized agent is found to be defective. A written description detailing the nature of the claimed defect, together with the equipment claimed to be defective if required by ATR, must be delivered to ATR or its authorized agent within 30 days of discovery of the claimed defect (but in no event later than 30 days after the expiration of the applicable warranty term).

EQUIPMENT	WARRANTY TERM*	
	PARTS	LABOR
Convect Rite III Carts	1 Year	1 Year

\*The warranty term commences 30 days after the date of ATR's invoice for the equipment.

THE WARRANTIES AND REPRESENTATIONS OF ATR CONTAINED HEREIN ARE EXPRESSLY IN LIEU OF, AND THE BUYER WAIVES, ANY AND ALL OTHER WARRANTIES EXPRESS OR IMPLIED, INCLUDING THE WARRANTIES OF MERCHANTABILITY AND FITNESS FOR A PARTICULAR PURPOSE, AND ANY OTHER REMEDIES AGAINST ATR, WHETHER BASED UPON CONTRACT, NEGLIGENCE, STRICT LIABILITY OR OTHERWISE. ATR SHALL NOT BE LIABLE FOR ANY CONSEQUENTIAL OR INCIDENTAL DAMAGES OR ECONOMIC LOSS OF ANY NATURE (INCLUDING WITHOUT LIMITATION LOSS OF REVENUES AND/OR PROFITS) THAT MAY BE CLAIMED TO RESULT FROM ANY NEGLIGENCE OR BREACH OF WARRANTY OR CONTRACT BY ATR.

#### Exceptions and Exclusions

This warranty is issued only to the original purchaser, and is not transferable and applies only to the products installed within the United States of America, its territories and Canada. During the term of any labor warranty, ATR will pay all pre-approved shipping charges incurred in returning defective equipment to ATR and labor costs incurred in the removal and reinstallation of such equipment. Contact ATR before returning any defective equipment or otherwise performing any warranty repairs. ATR assumes no liability for any work or repair performed without its prior approval. After the expiration of any labor warranty, the original purchaser is responsible for all shipping charges incurred in returning defective equipment to ATR and labor for removing and reinstalling such equipment. ATR shall not be responsible for the replacement of expendable items like lamps and fuses or product failure resulting from normal wear and tear, improper installation, misuse, sabotage, abuse, neglect, accident, unauthorized alterations to repair, or other factors beyond the control of ATR. Neither this warranty, nor the liability of ATR may be modified or extended by action of any agent, distributor or other person or by custom or practice.

CALL ATR TOLL FREE AT 1-800-888-5426 IF YOU HAVE ANY QUESTIONS ABOUT THIS WARRANTY OR YOUR ATR PRODUCT.



***Aladdin Temp-Rite***<sup>®</sup>

250 East Main Street, Hendersonville, TN 37075  
1-800-888-8018 • [www.aladdintemprite.com](http://www.aladdintemprite.com) • [info@aladdin-atr.com](mailto:info@aladdin-atr.com)