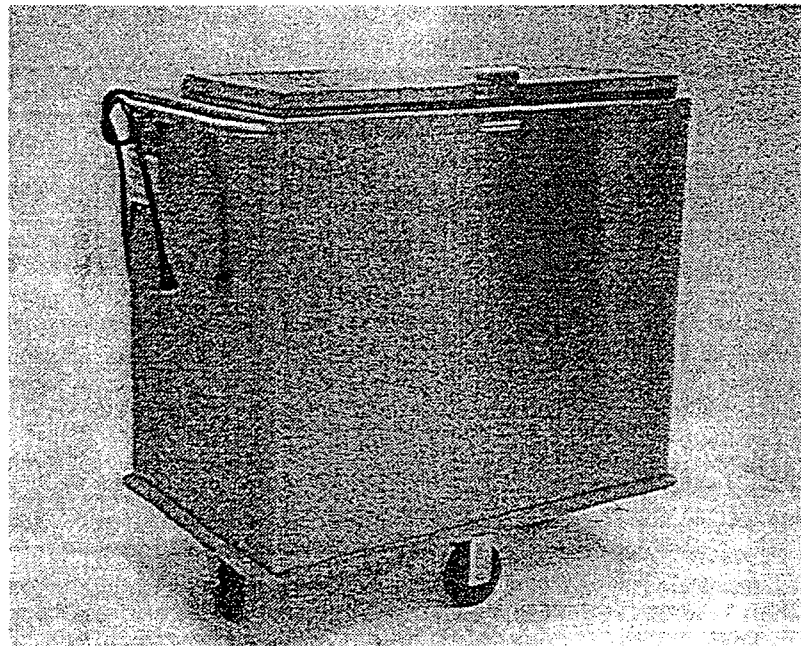




SERVICE & INSTALLATION MANUAL

*Please read this manual completely before attempting to install or operate this equipment!
Notify carrier of damage! Inspect all components immediately. See page 3.*



**DHO1/DHO2/DHO3/DHO4
DHO1A/DHO2A/DHO3A/DHO4A
DHO1E/DHO2E/DHO3E/DHO4E
Base and dish heaters**

Effective January 1995

Manufactured for Aladdin Synergetics by **Delfield**

CONTENTS

INTRODUCTION	3
RECEIVING AND INSPECTING	3
INSTALLATION	3
OPERATION	4
TEMPERATURE ADJUSTMENT	5
SPRING AND ROD PLACEMENT & CAPACITY CHARTS	
DHO1 & DHO2	6
DHO3 & DHO4	7
MAINTENANCE	8
ELECTRICAL WIRING DIAGRAM	8
TROUBLESHOOTING REFERENCE CHART	9
ASSEMBLY DRAWINGS	
DHO1 & DHO2	10
DHO3 & DHO4	12
ELEVATOR ASSEMBLIES	14
REPLACEMENT PARTS LISTS	
DHO1 & DHO2	11
DHO3 & DHO4	13
ELEVATOR ASSEMBLIES	15
EQUIPMENT WARRANTY	back cover

©1994 The Delfield Company.
 ©1994 Aladdin Synergetics, Inc.

INDEPENDENT TESTING

This equipment has met the requirements to be listed by the following organizations:

- Underwriters' Laboratories — File #E64923
- Canadian Standards Association — File #LR844484-M2
- National Sanitation Foundation International — certified to Standard 2

SPECIFICATIONS

MODEL NUMBER	LENGTH	WIDTH	HEIGHT	VOLTAGE/ HERTZ/PHASE	AMPS	NEMA PLUG	SHIP WEIGHT
DHO1	30.75 in 78.1 cm	24.00 in 61.0 cm	40.37 in 102.6 cm	208/60/1	13.0	6-20P	183 lbs 82.4 kg
DHO2	30.75 in 78.1 cm	24.00 in 61.0 cm	40.37 in 102.6 cm	208/60/1	13.0	6-20P	183 lbs 82.4 kg
DHO3	40.37 in 102.6 cm	24.00 in 61.0 cm	40.37 in 102.6 cm	208/60/1	16.3	6-20P	213 lbs 95.9 kg
DHO4	40.37 in 102.6 cm	24.00 in 61.0 cm	40.37 in 102.6 cm	208/60/1	16.3	6-20P	213 lbs 95.9 kg
DHO1A	30.75 in 78.1 cm	24.00 in 61.0 cm	40.37 in 102.6 cm	240/60/1	12.0	6-20P	183 lbs 82.4 kg
DHO2A	30.75 in 78.1 cm	24.00 in 61.0 cm	40.37 in 102.6 cm	240/60/1	12.0	6-20P	183 lbs 82.4 kg
DHO3A	40.37 in 102.6 cm	24.00 in 61.0 cm	40.37 in 102.6 cm	240/60/1	14.0	6-20P	213 lbs 95.9 kg
DHO4A	40.37 in 102.6 cm	24.00 in 61.0 cm	40.37 in 102.6 cm	240/60/1	14.0	6-20P	213 lbs 95.9 kg
DHO1E	30.75 in 78.1 cm	24.00 in 61.0 cm	40.37 in 102.6 cm	240/50/1	13.0		183 lbs 82.4 kg
DHO2E	30.75 in 78.1 cm	24.00 in 61.0 cm	40.37 in 102.6 cm	240/50/1	13.0		183 lbs 82.4 kg
DHO3E	40.37 in 102.6 cm	24.00 in 61.0 cm	40.37 in 102.6 cm	240/50/1	16.3		213 lbs 95.9 kg
DHO4E	40.37 in 102.6 cm	24.00 in 61.0 cm	40.37 in 102.6 cm	240/50/1	16.3		213 lbs 95.9 kg

INTRODUCTION

The Aladdin® DHO base and plate heaters discussed in this manual are mobile, thermostatically controlled, forced air convection heated dispensers suitable for a wide variety of dish or metal pellet base configurations, sizes and materials.



Wax filled and plastic pellet bases should not be heated in these units. Failure to adhere to this warning could cause explosion or fire.

RECEIVING AND INSPECTING THE EQUIPMENT

Even though most equipment is shipped crated, care should be taken during unloading so the equipment is not damaged while being moved into the building.

Carefully check for any visible signs of damage to the cartons or containers. If evidence of damage exists, the package should be opened immediately and a joint inventory and examination of the contents should be made by you and the driver.

Concealed damage

If a concealed loss or damage is discovered after you have given the carrier a clear delivery receipt, **notify the carrier in writing immediately or within 10 days from the delivery date.** If you phone the carrier, you must follow up the call in writing to protect

your rights. You can only improve your position as a claimant by promptly reporting such loss or damage. You should also **retain all cartons or containers, including packing material, until an inspection has been made or waived.**

Filing a claim

Notation of loss or damage does not constitute the filing of a claim. You should file your claim **in writing** with the carrier immediately!

Carriers will furnish the necessary form upon request. You should also request an inspection. If a claim is filed by phone, always follow up immediately in writing.

INSTALLATION

Electrical connection

Refer to the specifications data on page 2, the serial tag, your local code or the National Electrical Code to be sure the unit is connected to the proper power source. A protected circuit of the correct voltage and amperage must be run for connection of the line cord.



Every unit is fitted with a grounded power cord and must be connected to a properly ground receptacle. Each receptacle must be wired to a dedicated circuit protected by a fuse or circuit breaker rated at not more than 20 amps.

The units have an **ON/OFF** switch on the end of the unit near the push handle. Read the following sections of the manual regarding set-up and operation before turning the unit on.



The power switch should be turned to **OFF** and the unit disconnected from the power source whenever performing service or maintenance functions.

Setting up the equipment

All models are equipped with a self-leveling mechanism that is removable through the top to make adjustments to the tension springs or the optional dish guide rods. By adding or removing springs, the proper dispensing height can be obtained; by adding and moving rods, different dish stacking arrangements can be made. Refer to the tables on pages 6 and 7 for information on the number of springs and rod arrangements. Both adjustments should be done at the same time as part of the initial equipment set up or when a change of dinnerware occurs.

To prepare the equipment for operation, proceed as follows:



- ① Remove carrier tray and lift elevator assembly up and out. Set it on the floor. *It is recommended that two persons perform this operation.*
- ② Using a flat screwdriver, loosen the screws holding the bottom of the spring guard panels. Remove both panels.
- ③ For the correct spring arrangement, refer to the tables on pages 6 and 7. Disconnect any unnecessary springs from the elevator carrier and leave hanging from the top frame for future use.
- ④ Screw the spring guard panels back into position.
- ⑤ To install the dish guide rods into models DHO2 or DHO4, first select the rod arrangement you need from the tables on page 6 and 7. Put the threaded end of the rod into the sockets in the bottom of the unit in the pattern you selected. If pliers are used to tighten these, make sure not to crimp the rods or the carrier may bind.
- ⑥ Place the elevator assembly back inside the cabinet. Once again, it is recommended that two persons perform this operation.
- ⑦ Return the carrier tray to its original position.

Aladdin®

For parts and service, call (800) 888-5426

OPERATION

Brief overview

These units are designed to operate in one of two different heating ranges: the high range for non-wax filled metal pellet bases or the low range for Alacite® or china plates. These ranges can be selected as required (see "Temperature adjustment" below).

Once the proper operating range has been set and the unit is turned on, the fan motor, heater and power indicator light will come on. There is a power indicator light for each of the two different ranges, but only the one for which the unit is set will be lit. This provides the operator a way to check which range, **BASES** or **PLATES** is being used. There is also a rectangular "service" light located next to the **ON/OFF** switch. This light comes on in the event of a thermostatic failure.

The fan motor will begin to circulate the heated air in and around the bases or plates in a convection process that promotes a quick and even heat absorption by the dinnerware.

Once the air inside the cabinet has reached the desired temperature, the thermostat will continue to maintain this temperature by regulating the power to the heater. The fan will run as long as the unit is on.

Loading

Load carrier tray by carefully stacking the dishes or bases in between the guide rods in the pattern which matches the rod layout selected from pages 6 and 7. Whether guide rods are used or not, always keep the load leveled on the carrier or it may bind. Never try to exceed the recommended dish capacities shown on pages 6 and 7.



Wax filled and plastic pellet bases should not be heated in these units. Failure to adhere to this warning could cause explosion or fire.

Power

Set the power switch to the **ON** position. A red light will come on to indicate which temperature range is in use.

*Make sure the correct temperature range (**BASE** or **PLATE**) is selected. Using the wrong range may cause damage to dishes.*

Keep the cover closed completely to insure proper heating operation.

Depending on the stack configuration, quantity and dish material, the heating time will vary. The heater should always be turned on 60 to 90 minutes before dispensing. Generally, china dishes will heat quicker than Alacite® and metal pellet bases will require the longest heat up time.

Dispensing



Operators should always wear gloves or use plate lifters when handling heated bases.



After the unit is turned off or unplugged, the bases or dishes inside will remain hot for some time. Leave the lid open to allow the unit to cool.

Dispense the dishes in an even manner to keep the load balanced or the carrier may bind.

*These units are furnished with a red "service" light located near the **ON/OFF** switch. If at any time during the operation of the heater, this light comes on, it means there has been a thermostat failure and power to the heating element has been cut off. The fan may remain in operation but the unit will not heat. Notify your maintenance supervisor before attempting to operate unit again.*

TEMPERATURE ADJUSTMENT

The **BASE** range has been factory preset for approximately 250°F(120°C) and the **PLATE** range for 170°F (76°C).



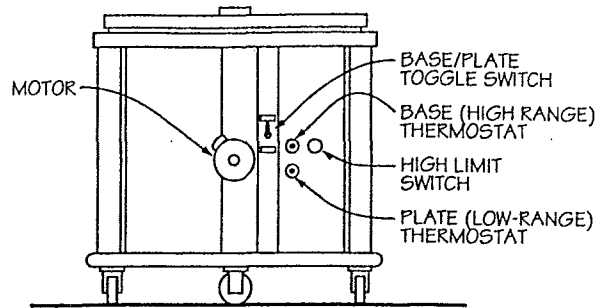
- ① To change ranges, turn the unit off and disconnect the plug from the outlet. Allow the cabinet to cool to room temperature.
- ② Loosen bottom screws from rear louvered panel and remove.
- ③ Set the toggle switch to either **BASES** (high range thermostat) or **PLATES** (low range thermostat), as desired. The **PLATE** mode is recommended for Alacite® or china dishes. The **BASES** mode is to be set only for metal pellet bases.

Wax filled and plastic pellet bases should not be heated in these units. Failure to adhere to this warning could cause explosion or fire.



- ④ The high- and low-range thermostats are located to the right of the toggle switch (see illustration 1). The high-range thermostat (for use with bases) is on top; the low-range thermostat (for use with dishes) is on the bottom. To adjust the set temperature of either thermostat, use a

small flat screwdriver to turn the appropriate dial screw. Turning the screw clockwise will increase the temperature; turning it counter-clockwise will decrease the temperature. As the screw is turned, you will hear a "click" sound. Each click represents a 5°F (2.8°C) change.

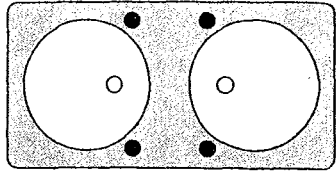
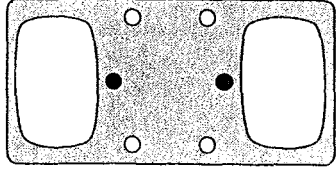
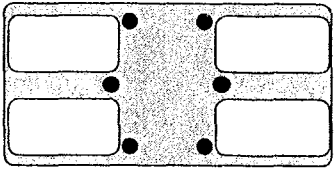
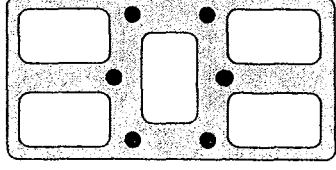


REAR VIEW

Illustration 1. Location of controls.

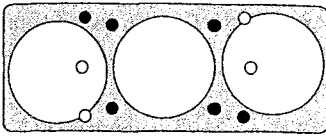
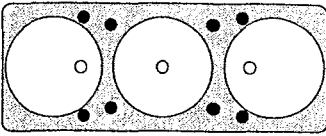
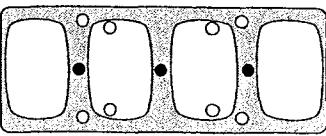
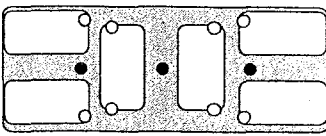
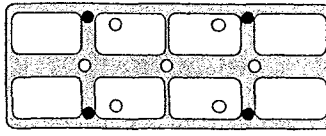
- ⑤ Secure rear louvered panel in place before attempting to operate unit again.

SPRING AND ROD PLACEMENT CHART—DHO1 & DHO2

STYLE OR BRAND NAME	DIMENSIONS	MODEL NUMBER(S)	SPRINGS REQUIRED		TOTAL CAPACITY	ROD & DISH PLACEMENT
			LARGE	SMALL		
Bases						
Finessa®	9½" diameter	K120	6	2	106	See round plates diagram below
Round plates						
China	8 ¹⁵ / ₁₆ " diameter	J300	4	6	136	
China	9 ¹ / ₁₆ " diameter	J301	4	5	136	
China	8 ¹⁵ / ₁₆ " diameter	J105, J106	4	4	136	
Alacite®	9 ¹ / ₁₆ " diameter	K95	4	2	120	
Platters						
China	6 ⁷ / ₈ " x 9 ⁷ / ₁₆ "	J53, J304, J545	4	6	168	
Alacite®	6 ¹⁵ / ₁₆ " x 9 ¹³ / ₁₆ "	B52, J404	4	2	168	
Rectangular dishes						
China	5 ³ / ₁₆ " x 7 ⁷ / ₈ "	J31	6	4	240	
China	5 ¹ / ₁₆ " x 7 ⁷ / ₈ "	J302	6	2	212	
China	5 ¹ / ₈ " x 7 ³ / ₄ "	K41	6	2	204	
Alacite®	5 ³ / ₁₆ " x 7 ¹³ / ₁₆ "	B50, J402	4	0	168	
China	5 ¹ / ₈ " x 7 ³ / ₈ "	K40, J305	6	4	305	
Alacite®	4 ¹⁵ / ₁₆ " x 7 ⁷ / ₁₆ "	K75, J405	4	2	265	
Side dishes						
China	3 ⁷ / ₁₆ " x 4 ³ / ₄ "	J32, J303, K42	6	0	672	12 stacks, no rods
Alacite®	3 ¹¹ / ₁₆ " x 4 ⁷ / ₈ "	B48, J403	4	0	440	10 stacks, no rods

Always connect the same number of identically sized springs on each side of the elevator or it may bind.

SPRING AND ROD PLACEMENT CHART—DHO3 & DHO4

STYLE OR BRAND NAME	DIMENSIONS	MODEL NUMBER(S)	SPRINGS REQUIRED		TOTAL CAPACITY	ROD & DISH PLACEMENT
			LARGE	SMALL		
Bases						
Finessa®	9½" diameter	K120	8	4	159	
Round plates						
China	8½¹⁄₁₆" diameter	J300	8	0	204	
China	9¹⁄₁₆" diameter	J301	8	0	204	
Alacite®	9¹⁄₁₆" diameter	K95	6	0	180	
Platters						
China	6⁷⁄₈" x 9⁷⁄₁₆"	J53, J304, J545	10	0	336	
Alacite®	6¹⁵⁄₁₆" x 9¹³⁄₁₆"	B52, J404	6	4	336	
Rectangular dishes						
China	5³⁄₁₆" x 7⁷⁄₈"	J31	10	0	360	
China	5¹⁄₁₆" x 7⁷⁄₈"	J302	8	4	318	
China	5½" x 7¾"	K41	8	4	306	
Alacite®	5³⁄₁₆" x 7¹³⁄₁₆"	B50, J402	4	4	252	
China	5½" x 7³⁄₈"	K40, J305	10	0	488	
Alacite®	4¹⁵⁄₁₆" x 7⁷⁄₁₆"	K75, J405	6	0	424	
Side dishes						
China	3⁷⁄₁₆" x 4¾"	J32, J303, K42	8	2	1008	18 stacks, no rods
Alacite®	3¹¹⁄₁₆" x 4⁷⁄₈"	B48, J403	4	4	704	16 stacks, no rods

Always connect the same number of identically sized springs on each side of the elevator or it may bind.



For parts and service, call (800) 888-5426

MAINTENANCE

The following maintenance procedures should be performed regularly, in order to keep your DHO unit working efficiently.

- ① Turn the unit off and disconnect the plug from the outlet, and allow the cabinet to cool. If your unit is equipped with a "twist lock" plug, turn the plug to the left (counter-clockwise) to unlock it before pulling it out. Never pull on the cord. To reconnect the plug to the "twist lock" outlet, match the hooked blade to the corresponding slot, push the plug straight in until it is seated, and turn to the right (clockwise) to lock.
- ② Pull elevator assembly up and out and set it on a work surface. Two persons should perform this operation. Wipe it down with a damp cloth.

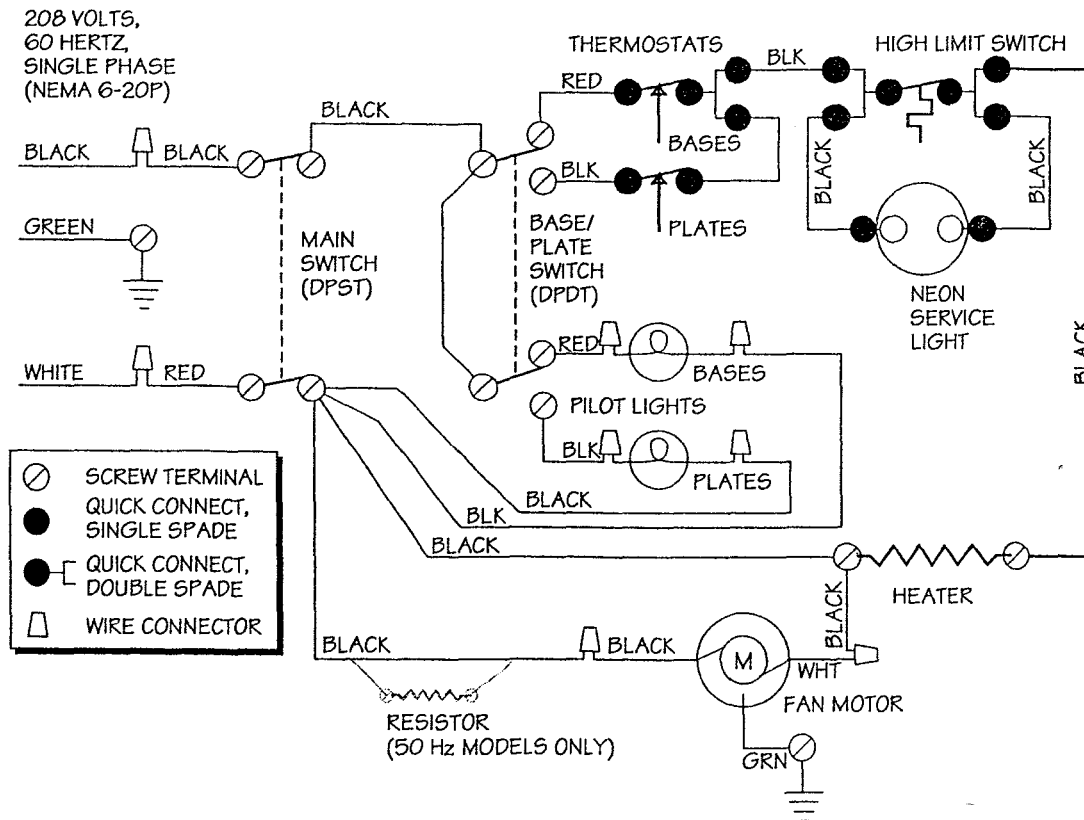
- ③ Clean out any debris inside the cabinet and wipe it down with a damp cloth. If necessary, loosen the screws holding the perforated guard panel and lift it out of the cabinet. Wipe down the area around the fan and heater carefully to avoid damage, then reassemble panel.
- ④ Place each mechanism back inside the cabinet and proceed by cleaning the outside of the cabinet with a mild, non-abrasive soap or detergent and warm water. A commercial stainless steel cleaner can also be used.

To avoid scratching the finish, do not use abrasive powders or scouring pads.



Do not steam or pressure clean or hose down the cabinet. This could damage the equipment and possibly cause an electrical shock to the operator.

ELECTRICAL WIRING DIAGRAM



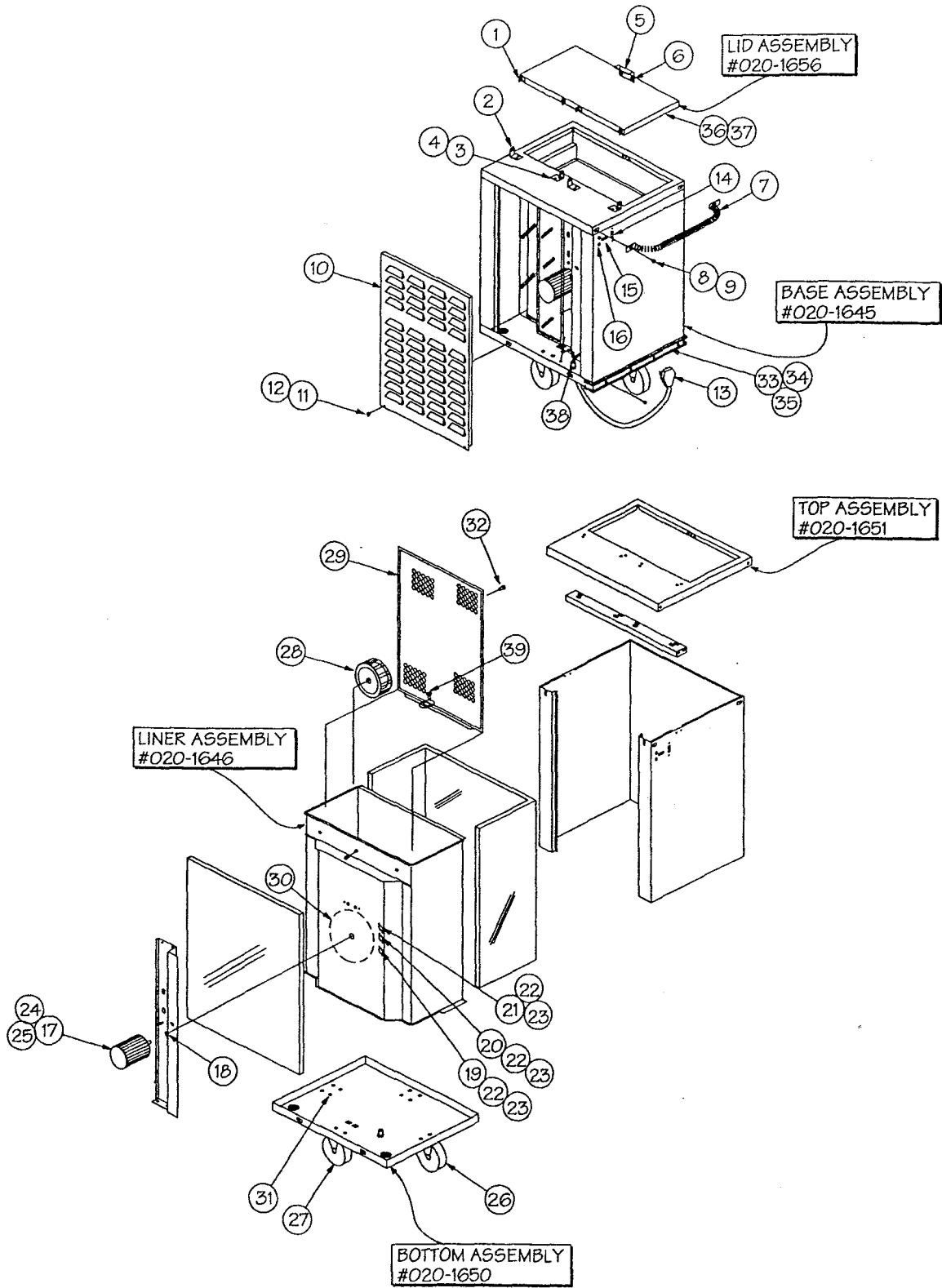
TROUBLESHOOTING REFERENCE CHART

<i>SYMPTOMS</i>	<i>PROBABLE CAUSES</i>	<i>SOLUTIONS</i>
Unit does not operate, and no lights are on	<ol style="list-style-type: none"> 1. No power 2. Bad power switch 3. Loose wiring 	<ol style="list-style-type: none"> 1. Make sure plug is connected and switch is ON. Check for power to the receptacle. 2. Replace power switch 3. Check and secure wiring
Unit heats, but fan does not operate	<ol style="list-style-type: none"> 1. Defective motor 2. Jammed or loose fan blade 3. Loose wiring 	<ol style="list-style-type: none"> 1. Replace motor 2. Replace or tighten blade 3. Check and secure wiring
Unit does not heat, but fan operates and service light is on	<ol style="list-style-type: none"> 1. Defective heating element 2. Open high limit switch 3. Loose wiring 	<ol style="list-style-type: none"> 1. Replace heating element 2. Replace switch. Check for causes before restarting equipment. 3. Check and secure wiring
Plate or base temperature is too low, fan operating	<ol style="list-style-type: none"> 1. Thermostat set too low 2. Jammed or loose fan blade 3. Cover is open 	<ol style="list-style-type: none"> 1. Readjust thermostat 2. Replace or tighten blade 3. Close cover
Plate or base temperature is too high, fan operating	<ol style="list-style-type: none"> 1. Wrong temperature mode 2. Thermostat set too high 3. Closed thermostat 4. Closed high limit switch 	<ol style="list-style-type: none"> 1. Change to correct mode 2. Readjust thermostat 3. Replace thermostat 4. Replace high limit switch
Cover is loose	Hinge screws are missing or loose	Replace or tighten screws
Elevator binds	<ol style="list-style-type: none"> 1. Improper springs used 2. Uneven load 3. Debris in elevator track 4. Faulty elevator wheels 	<ol style="list-style-type: none"> 1. Check springs chart and use correct number of springs. Make sure identical number and size of springs are on each side of elevator. 2. Balance load properly 3. Clean out debris 4. Lubricate with 30-weight oil or replace
Cabinet does not roll easily	<ol style="list-style-type: none"> 1. Debris on wheel or axle 2. No lubrication 	<ol style="list-style-type: none"> 1. Clean out debris 2. Lubricate axles with load-bearing grease. Lubricate swivel bearings with 30-weight oil.



For parts and service, call (800) 888-5426

ASSEMBLY DIAGRAM—DHO1 & DHO2



REPLACEMENT PARTS LIST—

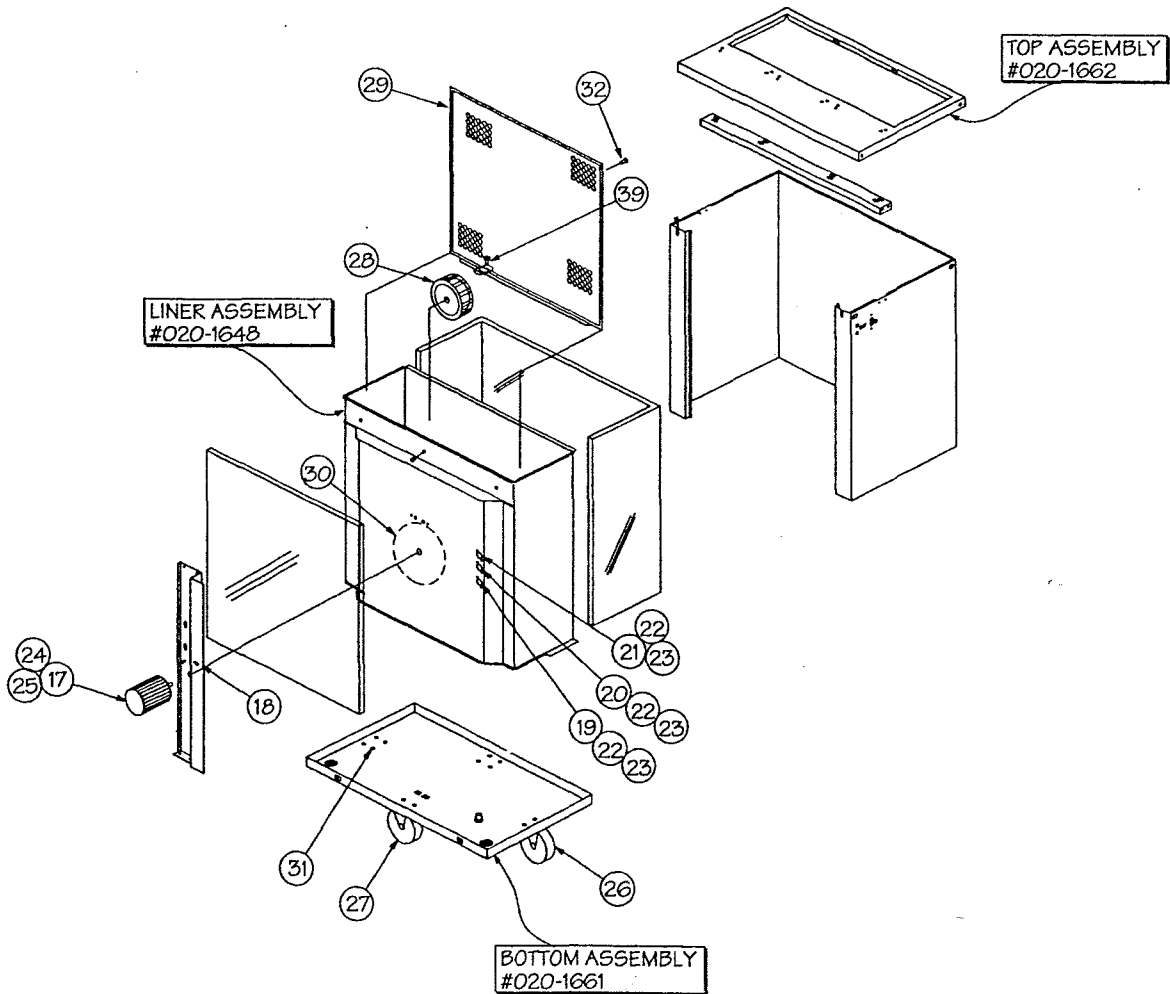
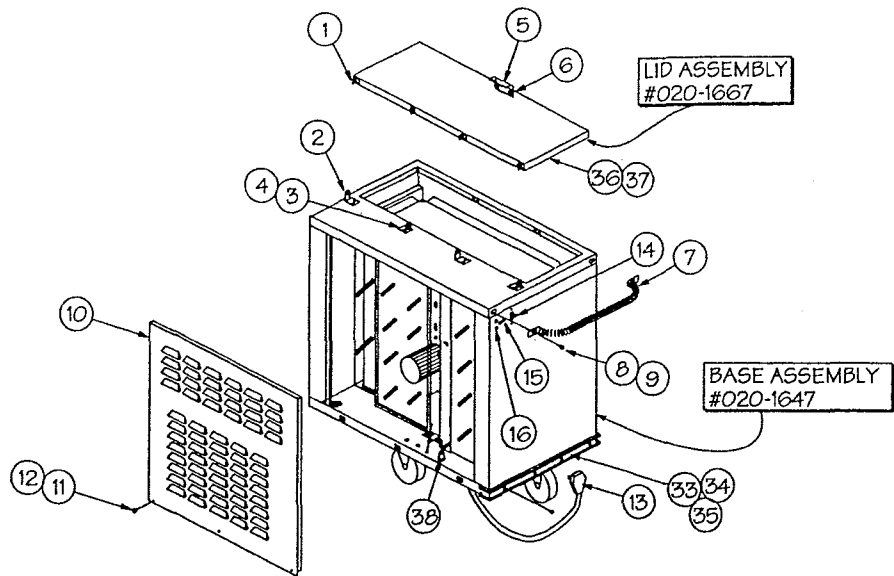
DHO1/DHO1A/DHO1E/DHO2/DHO2A/DHO2E

ITEM #	DESCRIPTION	DELFIELD PART #	ALADDIN PART #	QTY.
	Lid assembly	020-1656	28760	1
1	Bushing, nylon hinge pin	932-1107	29821	4
2	Hinge, left-hand	004-8717	28764 28486	2
3	Hinge, right-hand	004-7375	28763 28487	2
4	Screw, 1/4-20 x .50	632-0017		8
5	Handle, lid	004-7307		1
6	Screw, 1/4"-20 x .75	932-1022		2
7	Handle, push/pull	020-1613	24639	1
8	Screw, 1/4"-20 x 1.00	632-0005		2
9	Washer, 1/4", external lock	632-0207		2
10	Louvered panel, rear	004-7317		1
11	Screw, #10-24 x .62	632-0037		2
12	Washer, #10, lock, inside star	932-1061		2
13	Cord w/plug, NEMA 6-20P, 240V, 6'	619-0079	29820	1
14	Switch, 30A, double pole	219-4212	29262	1
15	Light, service, 250v	619-0238	29261	1
16	Light, pilot, red, 1/2", 250v	619-0237	29260	2
17	Motor, 208-230V/60Hz/single phase	616-0017	24635	1
18	Switch, toggle, 20A	619-0152	28739	1
19	Switch, high limit, 350°F	619-0183	29612	1
20	Thermostat, 235-275°F.	619-0182	29299	1
21	Thermostat, 165-205°F.	619-0181	29298	1
22	Screw, #6-32 x 3/7	932-1001		6
23	Nut, #6-32, hex lock	932-1010		6
24	Nut, hex, #8-32, s/s	632-0121		4
25	Washer, #10, shake proof	932-1061		4
26	Caster, 5", swivel w/brake, polyolefin	623-0210	29264	2
27	Caster, 5", rigid, polyolefin	623-0211	29263	2
28	Fan wheel	616-0005	24636	1
29	Heater guard, perforated	004-0016	39394	1
30	Heating element, 208V/2600W (standard & "E" models)	619-0219	29266	1
30	Heating element, 240V/2600W ("A" models)	619-0273	28740	1
31	Screw, 5/16"-18 x .75	632-0019		16
32	Screw, #10-32 x .62	932-1091		3
33	Bumper, wrap-around	623-0166	29647	8.75'
34	Bumper insert, aluminum	605-0004	39341	8.75'
35	Screw, #10-32 x 1.25	632-0006		20
36	Gasket, lid, magnetic	670-0063	29560	1
37	Screw, #8-32 x .50	932-1155		20
38	Harness, wiring	618-0002	29835	1
39	Pin hinge, brass	323-4360		2
	Resistor (50 Hertz models only)	619-0271	29977	1



For parts and service, call (800) 888-5426

ASSEMBLY DIAGRAM—DHO3 & DHO4



REPLACEMENT PARTS LIST— DHO3/DHO3A/DHO3E/DHO4/DHO4A/DHO4E

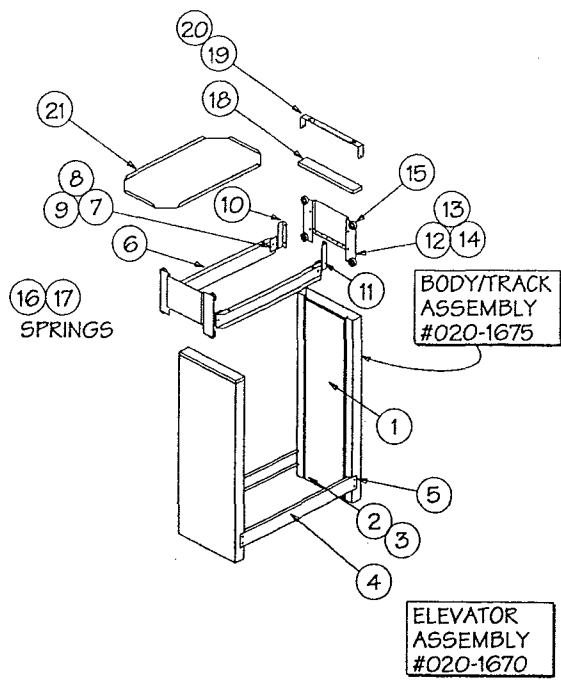
ITEM #	DESCRIPTION	DELFIELD PART #	ALADDIN PART #	QTY.
	Lid assembly	020-1667	28762	1
1	Bushing, nylon hinge pin	932-1107	29821	4
2	Hinge, left-hand	004-8717	28764 28786	2
3	Hinge, right-hand	004-7375	28763 28487	2
4	Screw, 1/4-20 x .50	632-0017		8
5	Handle, lid	004-7307		1
6	Screw, 1/4"-20 x .75	932-1022		2
7	Handle, push/pull	020-1613	24639	1
8	Screw, 1/4"-20 x 1.00	632-0005		2
9	Washer, 1/4", external lock	632-0207		2
10	Louvered panel, rear	004-7270	39636	1
11	Screw, #10-24 x .62	632-0037		3
12	Washer, #10, lock, inside star	932-1061		3
13	Cord w/plug, NEMA 6-20P, 240V, 6'	619-0079	29820	1
14	Switch, 30A, double pole	219-4212	29262	1
15	Light, service, 250v	619-0238	29261	1
16	Light, pilot, red, 1/2", 250v	619-0237	29260	2
17	Motor, 208-230V/60Hz/single phase	616-0017	24635	1
18	Switch, toggle, 20A	619-0152	28739	1
19	Switch, high limit, 350°F	✓ 619-0183	29618 25101	1
→ 20	Thermostat, 235-275°F.	— 619-0182	29299	1
→ 21	Thermostat, 165-205°F.	619-0181	29298	1
22	Screw, #6-32 x 37	932-1001		6
23	Nut, #6-32, hex lock	932-1010		6
24	Nut, hex, #8-32, S/S	632-0121		4
25	Washer, #10, shake proof	932-1061		4
26	Caster, 5", swivel w/brake, polyolefin	623-0210	29264	2
27	Caster, 5", rigid, polyolefin	623-0211	29263	2
28	Fan wheel	616-0005	24636	1
29	Heater guard, perforated	004-0010	39392	1
30	Heating element, 208V/2600W (standard & "E" models)	619-0218	24833	1
30	Heating element, 240V/2600W ("A" models)	619-0272	24832	1
31	Screw, 5/16"-18 x .75	632-0019		16
32	Screw, #10-32 x .62	932-1091		3
33	Bumper, wrap-around	623-0166	29647	10.5'
34	Bumper insert, aluminum	605-0004	28736	10.5'
35	Screw, #10-32 x 1.25	632-0006		24
36	Gasket, lid, magnetic	670-0064	29311	1
37	Screw, #8-32 x .50	932-1155		26
38	Harness, wiring	618-0002	29835	1
39	Pin hinge, brass	323-4360		2
	Resistor (50 Hertz models only)	619-0271	29977	1

29295

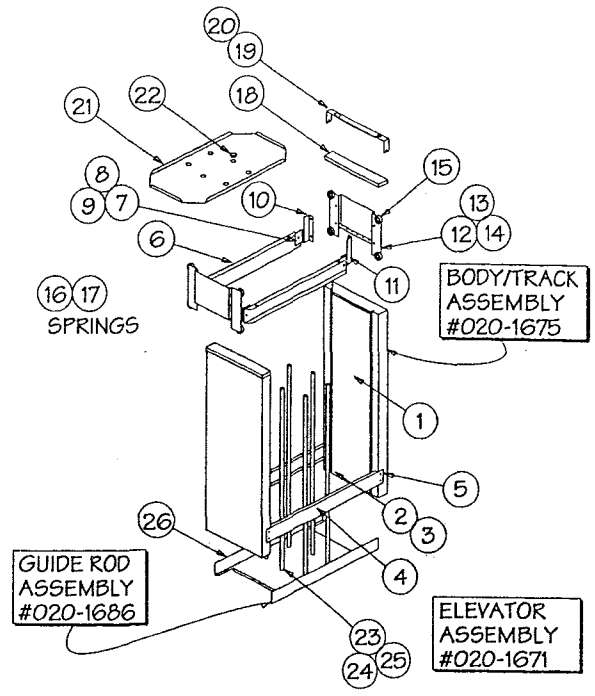


For parts and service, call (800) 888-5426

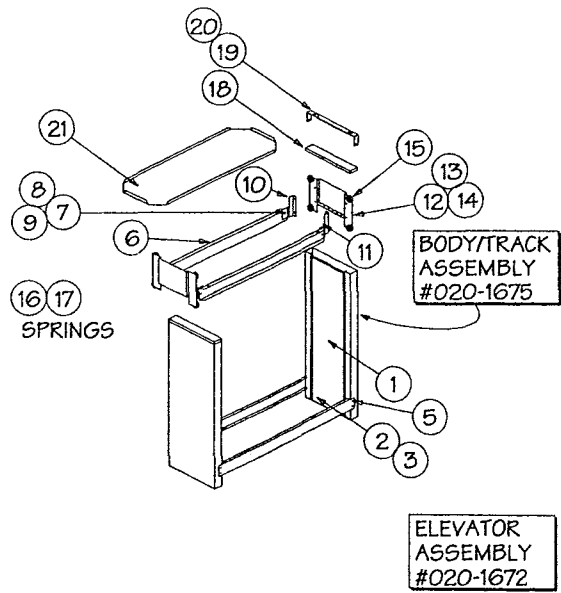
ELEVATOR ASSEMBLY DRAWINGS



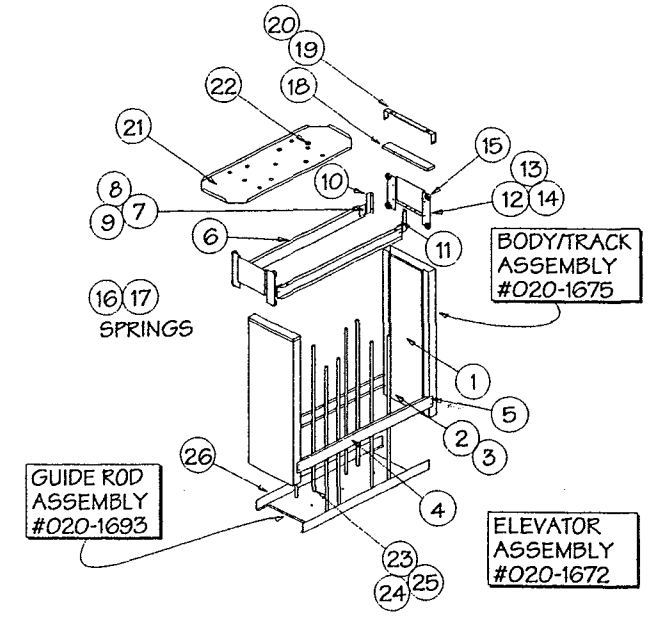
DH01



DH02



DH03



DH04

REPLACEMENT PARTS LIST—DHO1 & DHO2 ELEVATORS

ITEM #	DESCRIPTION	PART #	QTY.
1	Cover, removable	004-2078	2
2	Screw, #6-32 x .37	632-0048	4
3	Nut, self retaining	619-0249	4
4	Brace, bottom	004-2095	2
5	Screw, #10-32 x .50	932-1355	8
6	Channel, carrier support	004-2093	2
7	Screw, shoulder, 1/4"-20	632-0023	4
8	Washer, 1/4", split lock	932-1059	8
9	Nut, 1/4"-20, zinc, hex	932-1035	4
10	Mounting bracket, left-hand	004-2079	2
11	Mounting bracket, right-hand	004-2080	2
12	Carrier bracket, spring mount	004-2441	2
13	Screw, 1/4"-20 x .37	932-1150	8
14	Nut, 1/4"-20, zinc, hex	932-1035	8
15	Bearing, concave, w/mounting screw	623-0339	8
16	Spring, 34.3 oz/in	619-0010	6
17	Spring, 0.58 lb/in	619-0201	6
18	Top assembly, removable	020-1682	2
19	Handle	004-7319	2
20	Screw, #8 x .75	932-1238	4
21	Tray assembly, DHO1	020-1676	1
21	Tray assembly, DHO2	020-1680	1
22	Bushing, .75, DHO2 only	623-0247	6
23	Rod, guide, DHO2 only	004-6322	6
24	Nut, 1/4"-20, spot, DHO2 only	932-1105	6
25	Stud, 1/4"-20 x .37, DHO2 only	932-1338	6
26	Base, guide rods, DHO2 only	004-2083	1

REPLACEMENT PARTS LIST—DHO3 & DHO4 ELEVATORS

ITEM #	DESCRIPTION	PART #	QTY.
1	Cover, removable	004-2078	2
2	Screw, #6-32 x .37	632-0048	4
3	Nut, self retaining	619-0249	4
4	Brace, bottom	004-2094	2
5	Screw, #10-32 x .50	932-1355	8
6	Channel, carrier support	004-2092	2
7	Screw, shoulder, 1/4"-20	632-0023	4
8	Washer, 1/4", split lock	932-1059	8
9	Nut, 1/4"-20, zinc, hex	932-1035	4
10	Mounting bracket, left-hand	004-2079	2
11	Mounting bracket, right-hand	004-2080	2
12	Carrier bracket, spring mount	004-2441	2
13	Screw, 1/4"-20 x .37	932-1150	8
14	Nut, 1/4"-20, zinc, hex	932-1035	8
15	Bearing, concave, w/mounting screw	623-0339	8
16	Spring, 34.3 oz/in	619-0010	6
17	Spring, 0.58 lb/in	619-0201	6
18	Top assembly, removable	020-1682	2
19	Handle	004-7319	2
20	Screw, #8 x .75	932-1238	4
21	Tray assembly, DHO3	020-1677	1
21	Tray assembly, DHO4	020-1681	1
22	Bushing, .75, DHO4 only	623-0247	11
23	Rod, guide, DHO4 only	004-6322	8
24	Nut, 1/4"-20, spot, DHO4 only	932-1105	11
25	Stud, 1/4"-20 x .37, DHO4 only	932-1338	8
26	Base, guide rods, DHO4 only	004-2083	1



For parts and service, call (800) 888-5426

EQUIPMENT WARRANTY

For a period of 90 days (labor) and one year (parts), Aladdin Synergetics warrants this equipment to the original buyer to be free from defects in material and workmanship. If within the warranty period, a part is acknowledged by Aladdin to be defective, all obligations will have been fully complied with by one of the following methods:

1. Furnishing replacement part F.O.B. factory in even exchange for the returned part, freight prepaid.
2. Furnishing a free replacement part, F.O.B. factory.
3. Receiving the defective part, freight prepaid, repairing it and returning it F.O.B. factory.

This warranty does not apply to any damage in transit or resulting from installation, nor does it apply to damage or failure resulting from normal wear and tear, misuse, abuse, tampering or alteration. It becomes void if damage or failure occurs as a result of unauthorized service or installation of any part not supplied by the manufacturer or Aladdin. This warranty shall further not apply to any expenses, losses or consequential damages to any other property occurring as a result of unauthorized service or parts. Alteration, defacing or removal of the serial numbers voids this warranty.

This warranty is only effective within the United States and Canada.

DMDHO1-4
9501

Aladdin®

For parts and service, call (800) 888-5426