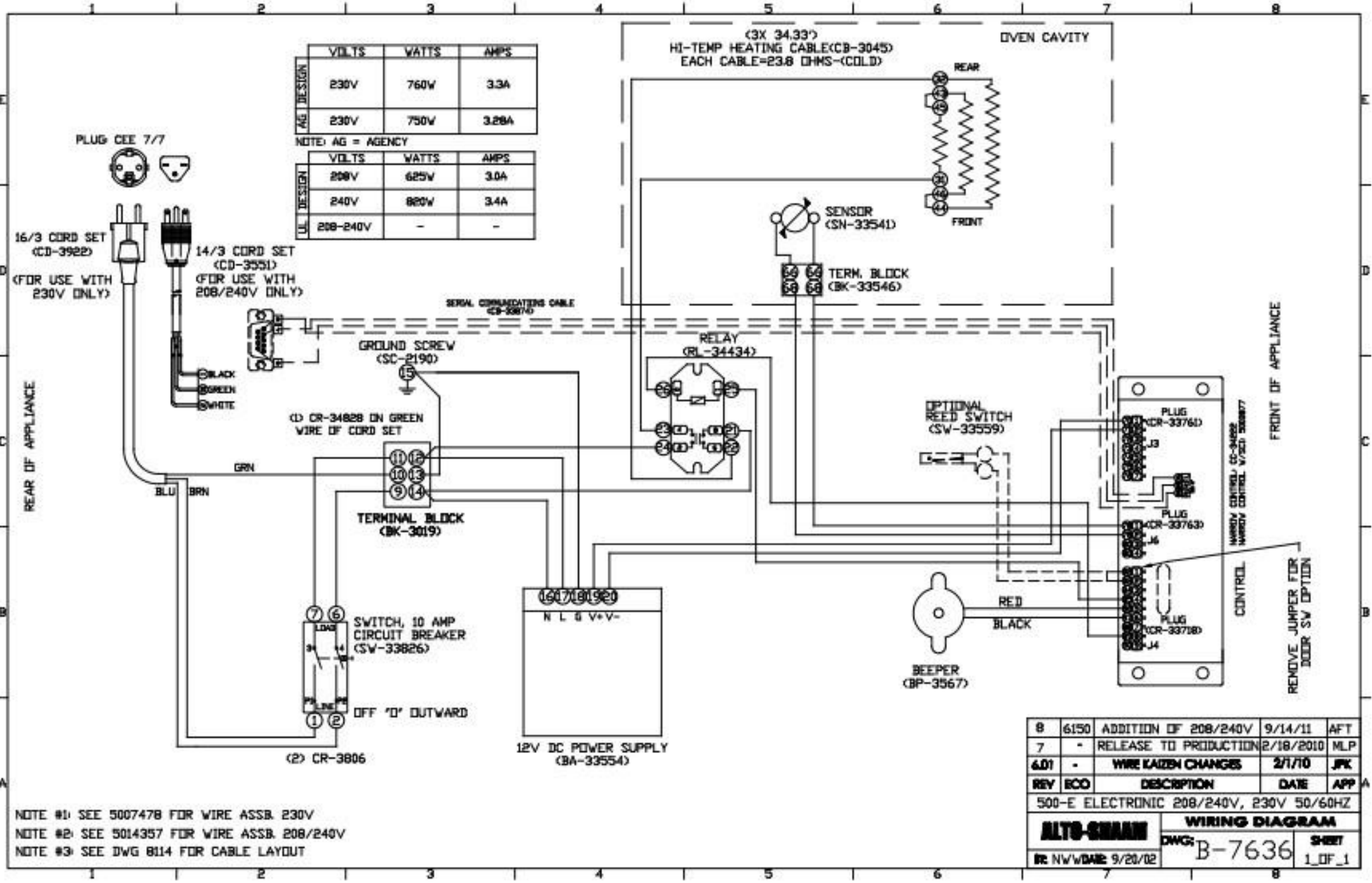


NOTE #1: SEE 5007478 FOR WIRE ASSB.
 NOTE #2: SEE DWG E5080 FOR CABLE LAYOUT

AG DESIGN	VOLTS	WATTS	AMPS
	125V	658W	5.3A
	125V	600W	4.8A

NOTE: AG = AGENCY

3	5605	RELEASE TO PRODUCTION	2/18/2010	MLP
2.01	-	WIRE KAIZEN CHANGES	2/1/10	JPK
2	-	REMOVE RANGED INLET	3/9/94	JPK
REV	ECO	DESCRIPTION	DATE	APP
500-E ELECTRONIC 125V 60HZ				
ALTO-SHAAM		WIRING DIAGRAM		
DWG: B-7872		SHEET 1_OF_1		
BY: JPK DATE: 6/28/07				



AG DESIGN	VOLTS	WATTS	AMPS
	230V	760W	3.3A
	230V	750W	3.28A

NOTE: AG = AGENCY

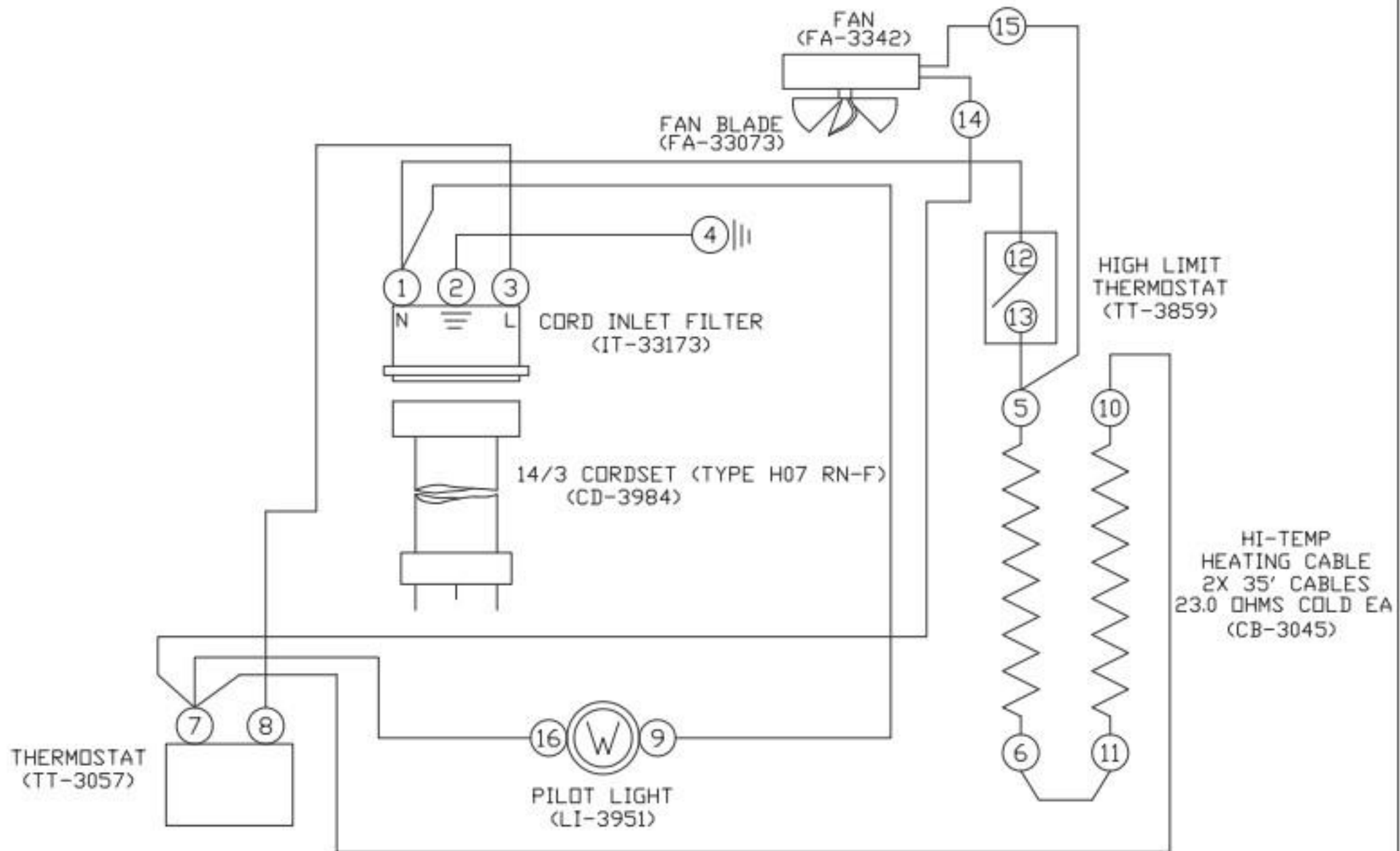
UL DESIGN	VOLTS	WATTS	AMPS
	208V	625W	3.0A
	240V	820W	3.4A
	208-240V	-	-

NOTE #1: SEE 5007478 FOR WIRE ASSB. 230V
 NOTE #2: SEE 5014357 FOR WIRE ASSB. 208/240V
 NOTE #3: SEE DWG 8114 FOR CABLE LAYOUT

REV	ECO	DESCRIPTION	DATE	APP
8	6150	ADDITION OF 208/240V	9/14/11	AFT
7	-	RELEASE TO PRODUCTION	2/18/2010	MLP
6.01	-	WIRE KAIZEN CHANGES	2/1/10	JPK

500-E ELECTRONIC 208/240V, 230V 50/60HZ

ALTO-CHAM	WIRING DIAGRAM	
DWG: B-7636	SHEET 1 OF 1	
REV: NV/w/DAE: 9/20/02		



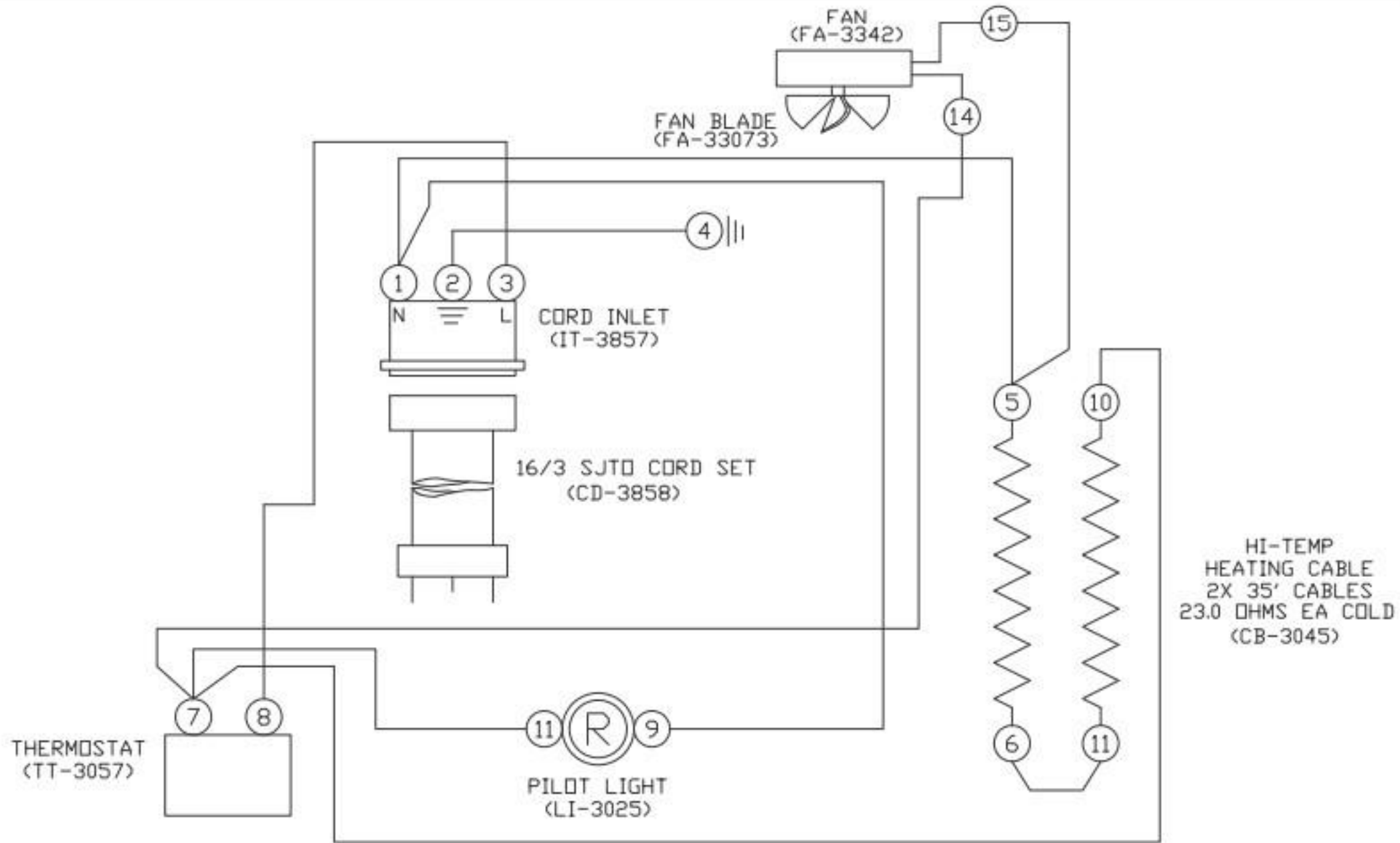
NOTE #1: ALL NUMBERS IN () = ALTO-SHAAM PART NUMBERS

NOTE #2: SEE DRW. #B-8214 FOR WIRE ASSEMBLIES

	VOLTS	WATTS	AMPS
AG DESIGN	230V	1115W	4.8A
AG	230V	1100W	4.8A

NOTE: AG = AGENCY

10	5605	RELEASE TO PRODUCTION	2/19/10	MLP
9.01	-	WIRE KAIZEN CHANGES	2/1/10	JPK
9	-	-	10/29/03	DDF
REV	ECO	DESCRIPTION	DATE	APP
500-E (NA-UNIT) 230V 50/60HZ				
ALTO-SHAAM		WIRING DIAGRAM		
BY: AL		DWG: A-7140	SHEET 1_OF_1	
DATE: 1/9/79				



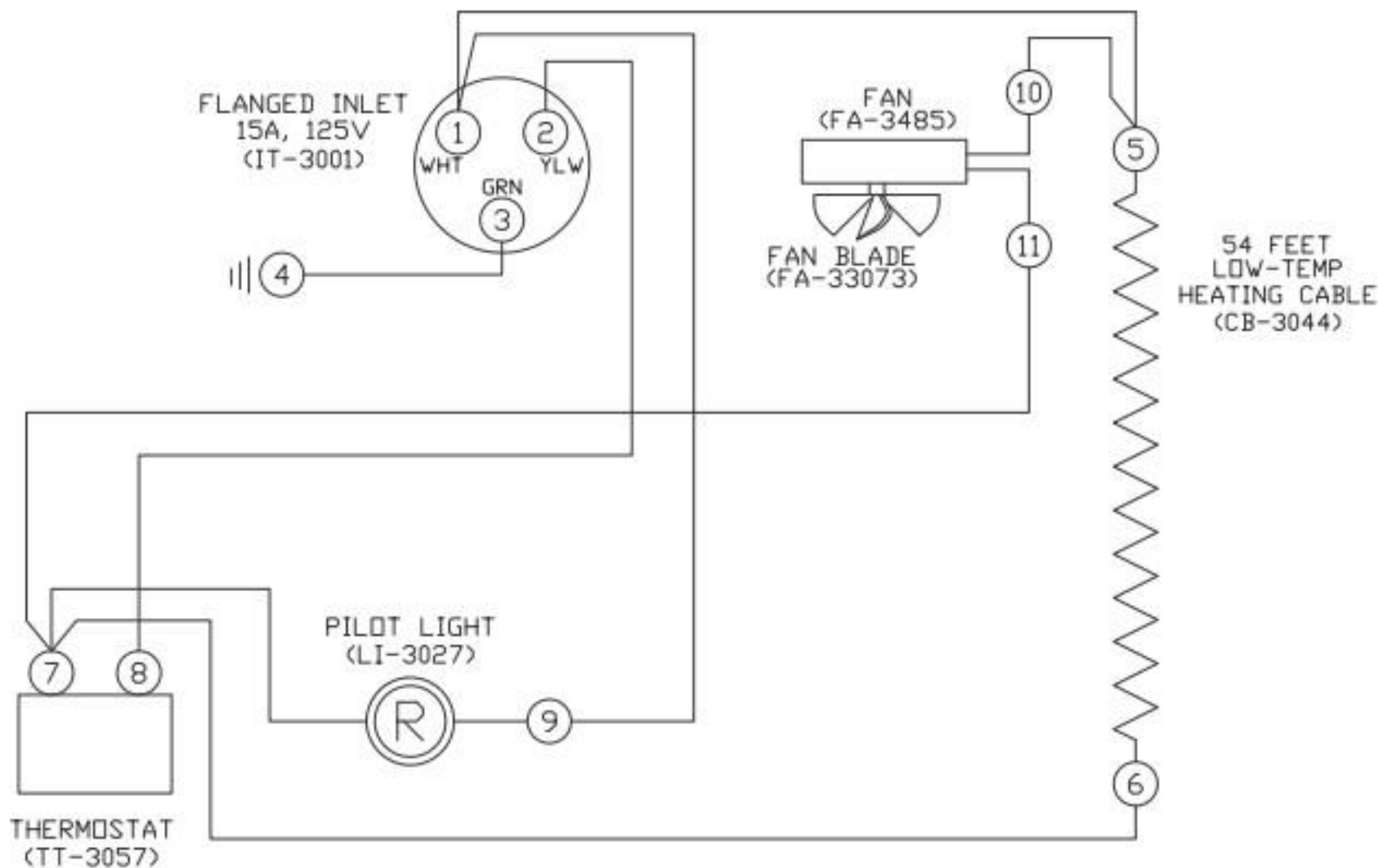
NOTE #1: ALL NUMBERS IN () = ALTO-SHAAM PART NUMBERS

NOTE #2: SEE DRW. #B-8737 FOR WIRE ASSEMBLIES

	VOLTS	WATTS	AMPS
AG DESIGN	208V	912W	4.4A
	240V	1214W	5A
AG	208-240V	1200W	5A

NOTE: AG = AGENCY

3	5605	RELEASE TO PRODUCTION	2/19/2010	MLP
2.01	-	WIRE KAIZEN CHANGES	1/29/10	JPK
2	-	-	10/29/03	DDF
REV	ECO	DESCRIPTION	DATE	APP
500-E (NA-UNIT) 208-240V 60HZ				
ALTO-SHAAM		WIRING DIAGRAM		
		DWG: A-7413	SHEET 1_OF_1	
BY: RS DATE: 5/22/95				



NOTE #1: ALL NUMBERS IN () = ALTO-SHAAM PART NUMBERS

NOTE #2: SEE DRW. #B-8084 FOR WIRE ASSEMBLY

	VOLTS	WATTS	AMPS
AG DESIGN	125V	540W	4.3A
	125V	500W	4A

NOTE: AG = AGENCY

2	5605	RELEASE TO PRODUCTION	2/19/2010	MLP
1.01	-	WIRE KAIZEN CHANGES	1/29/10	JPK
1	-	-	3/9/94	RS
REV	ECO	DESCRIPTION	DATE	APP

500-E 125V 60HZ

ALTO-SHAAM

WIRING DIAGRAM

BY: AL DATE: 3/17/77

DWG: A-7055

SHEET
1 OF 1