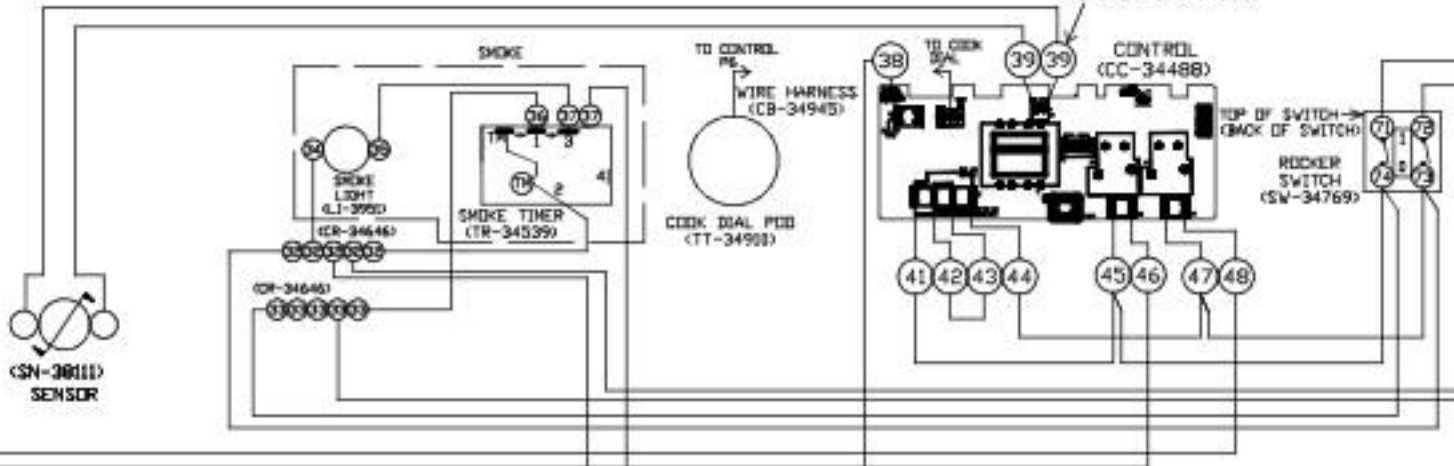
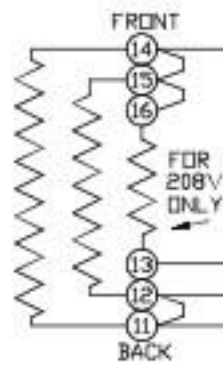


VIEWS ARE FROM REAR OF UNIT UPPER (FRONT)

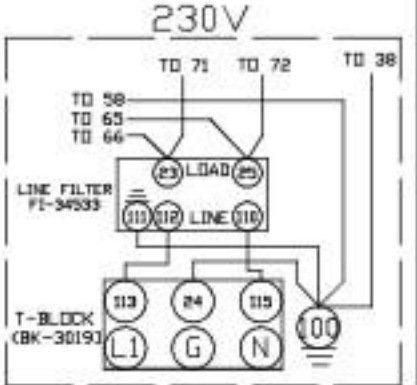
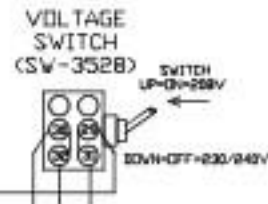
UPPER HEATING CABLE  
HI TEMP (CB-3045)  
3 UTILIZED FOR 208V  
2 UTILIZED FOR 230, 240V  
1000: 63' 8" 42 OHMS COLD EA  
1767: 63' 41.5 OHMS COLD EA



STANDARD CONTROL  
DIP SWITCH SETTINGS  
1, 3, & 5 ARE ON



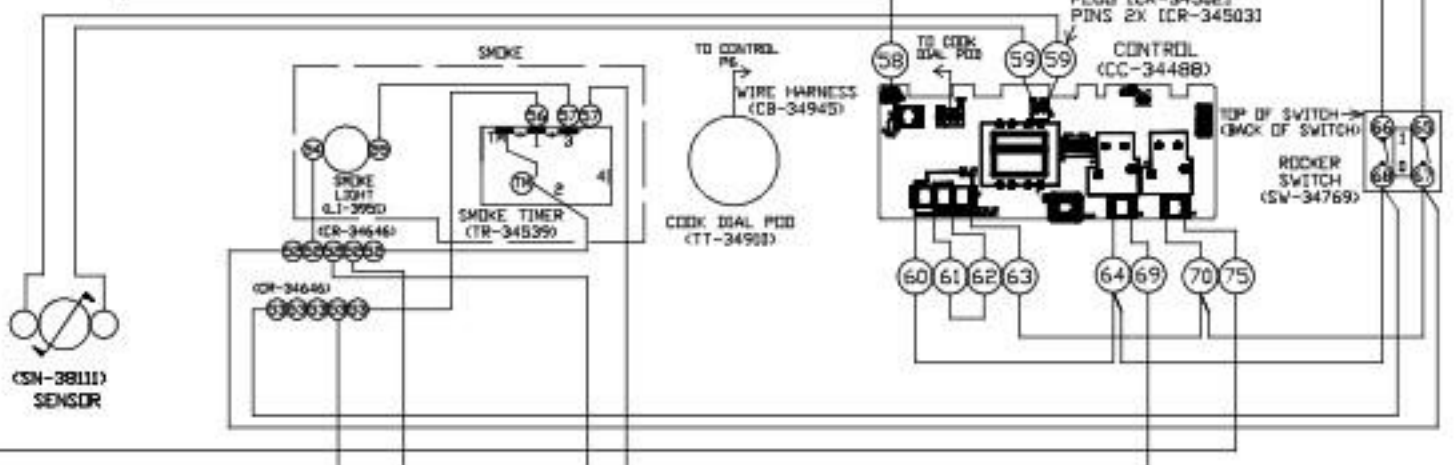
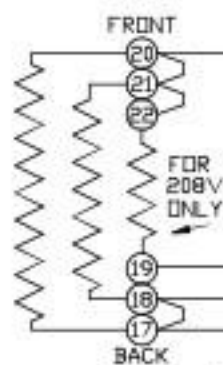
TURN 1 OFF FOR 250F.



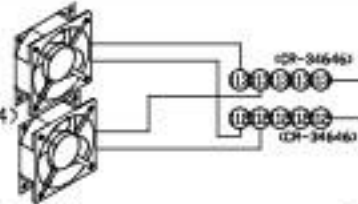
UPPER  
LOWER

UPPER (REAR)  
LOWER (FRONT)

LOWER HEATING CABLE  
HI TEMP (CB-3045)  
3 UTILIZED FOR 208V  
2 UTILIZED FOR 230, 240V  
1000: 63' 8" 42 OHMS COLD EA  
1767: 63' 41.5 OHMS COLD EA



COOLING FANS  
2X (FA-34524)



LOWER (REAR)

WIRE ASSEMBLIES:  
SEE 5012254 FOR MAIN WIRE ASSEMBLY  
SEE 5012256 FOR 208-240V OPTION WIRE ASSEMBLY  
SEE 5012260 FOR 230V OPTION WIRE ASSEMBLY  
SEE 5012259 FOR SMOKE OPTION WIRE ASSEMBLY

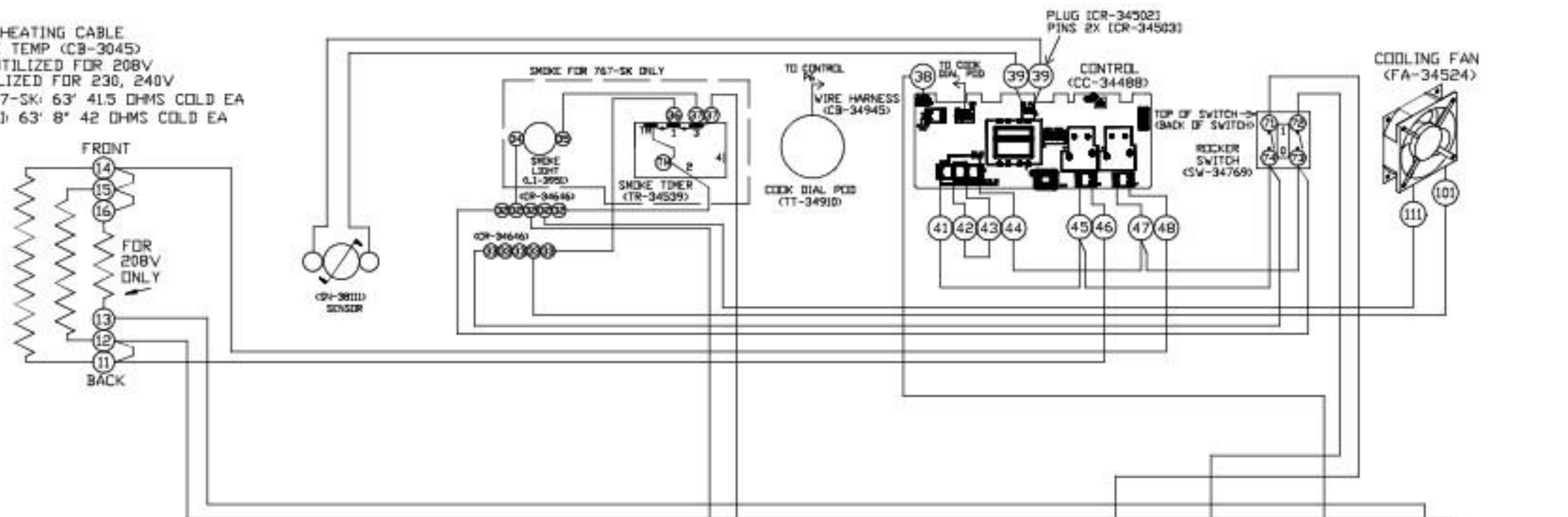
REV	ECO	DESCRIPTION	DATE	APP
10	7572	Connector Upgrade	04-25-16	TJG
9	7317	Sensor Wire Upgrade	03-18-16	TJG
8	6546	VOLTAGE SWITCH RE-DRAW	11-14-12	TJG
1000-TH/I, 1000-SK/I, 1767-SK 208-240V, 230V				
<b>ALTO-SHAAM</b>		<b>WIRING DIAGRAM</b>		
BY: JPK DATE: 4/23/10		DWG: 77355	SHEET 1_OF_1	

208-240V 60HZ, 230V 50/60HZ

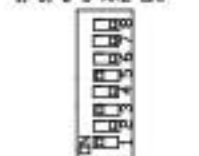
VIEW IS FROM REAR OF UNIT

(FRONT)

HEATING CABLE  
HI TEMP (CB-3045)  
3 UTILIZED FOR 208V  
2 UTILIZED FOR 230, 240V  
750-TH/II & 767-SK: 63' 41.5 OHMS COLD EA  
1000-TH/II,-SK/II: 63' 8" 42 OHMS COLD EA



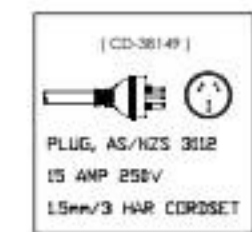
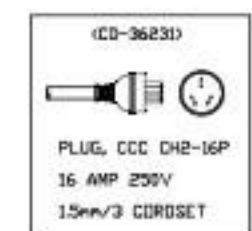
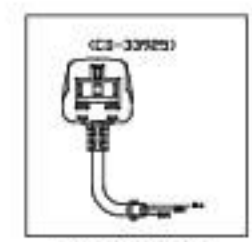
STANDARD CONTROL  
DIP SWITCH SETTINGS  
1, 3, & 5 ARE ON



TURN 1 OFF FOR 258F.



(REAR)



WIRE ASSEMBLIES:

- SEE 5012384 FOR MAIN WIRE ASSEMBLY
- SEE 5012387 FOR 208-240V OPTION WIRE ASSEMBLY
- SEE 5012385 FOR 230V OPTION WIRE ASSEMBLY
- SEE 5012386 FOR SMOKE OPTION WIRE ASSEMBLY

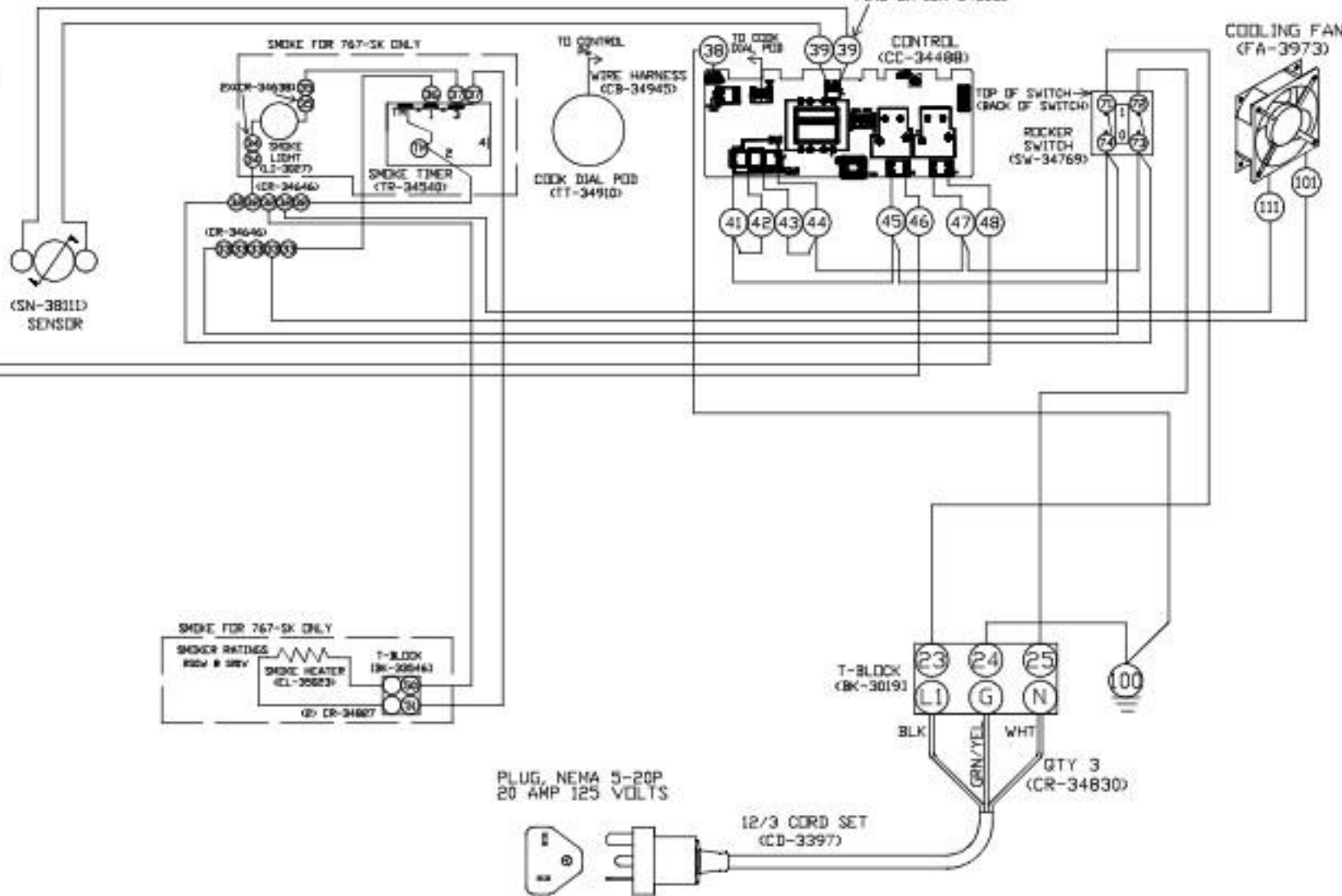
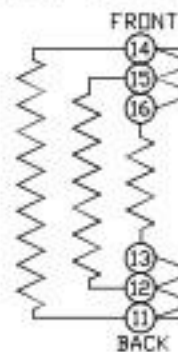
REV	ECO	DESCRIPTION	DATE	APP
10	7572	Connector Upgrade	4-25-16	TJG
9	7317	Sensor Wire Upgrade	3-18-16	TJG
8	7470	ADD CD-38149 AUSTRALIA	8-06-15	TJG
750, 1000-TH/II, 767-SK, 1000-SK/II				
<b>ALTO-SHAAM</b>		<b>WIRING DIAGRAM</b>		
BY: JPK DATE: 6/23/10		DWG: 77358	SHEET 1_OF_1	

208-240V 60HZ, 230V 50/60HZ

VIEW IS FROM REAR OF UNIT

(FRONT)

HEATING CABLE  
HI TEMP (CB-3045)  
3 CABLES UTILIZED  
750-TH/II & 767-SK: 37' 9" 24.93 OHMS COLD EA  
1000-TH/II: 33' 9" 22.24 OHMS COLD EA



(REAR)

STANDARD CONTROL  
DIP SWITCH SETTINGS  
1, 3, & 5 ARE ON



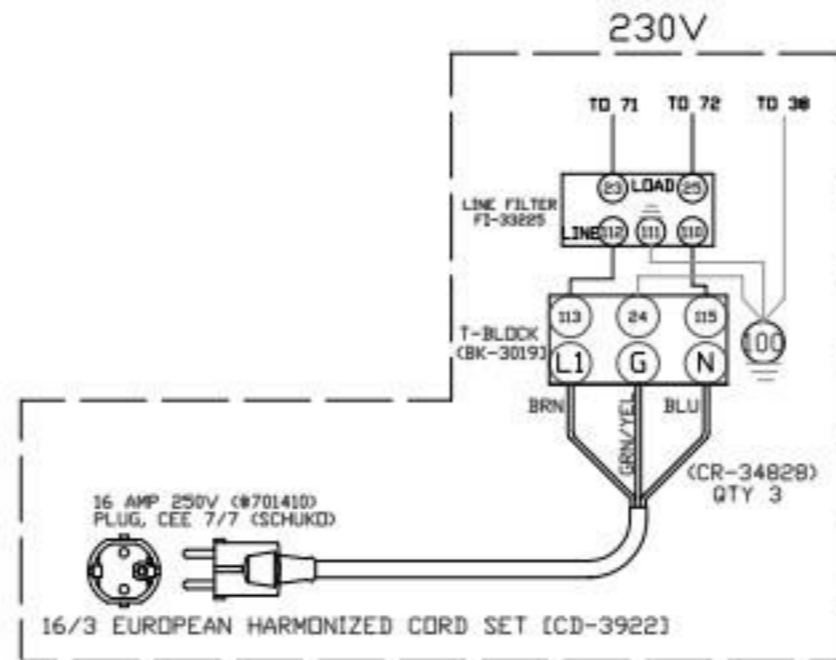
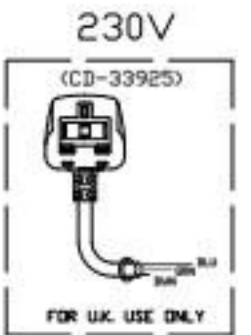
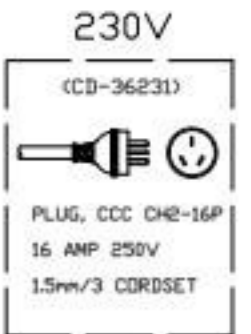
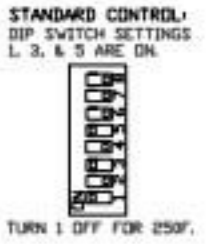
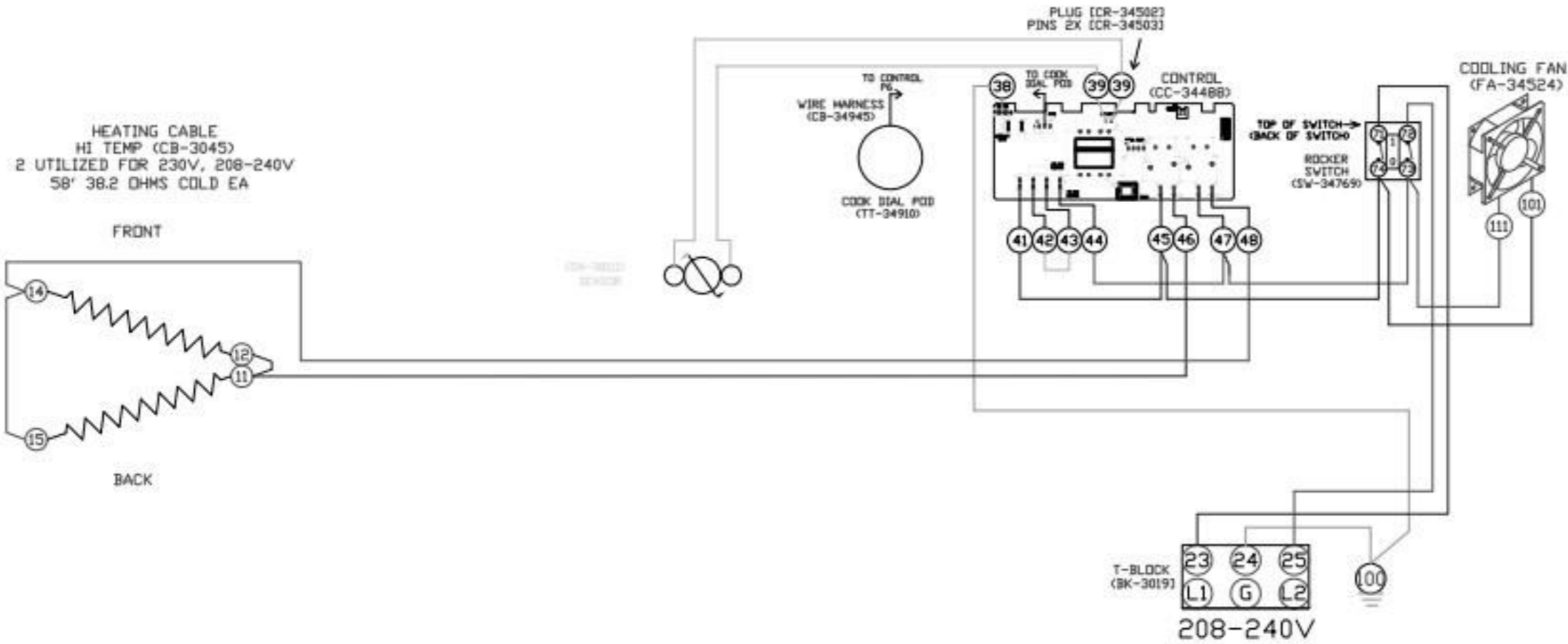
TURN 1 OFF FOR 250F.

WIRE ASSEMBLIES:  
SEE 5012383 FOR MAIN WIRE ASSEMBLY  
SEE 5012386 FOR SMOKE OPTION WIRE ASSEMBLY

7	7572	Wire Connector Upgrade	4-25-16	TJG
6	7317	Sensor Wire Upgrade	3-18-16	TJG
5	6076	BONNETLESS UPGRADE	3-28-12	NVA
REV	ECO	DESCRIPTION	DATE	APP
750,1000-TH/II, 767-SK 120V 60HZ				
<b>ALTO-SHAAM</b>		<b>WIRING DIAGRAM</b>		
BY: JPK DATE: 6/23/10		DWG: 77359	SHEET 1_DF_1	

VIEW IS FROM REAR OF UNIT

(FRONT)



WIRE ASSEMBLIES:

SEE 5012381 FOR MAIN WIRE ASSEMBLY  
 SEE 5012387 FOR 208-240V OPTION WIRE ASSEMBLY  
 SEE 5012385 FOR 230V OPTION WIRE ASSEMBLY

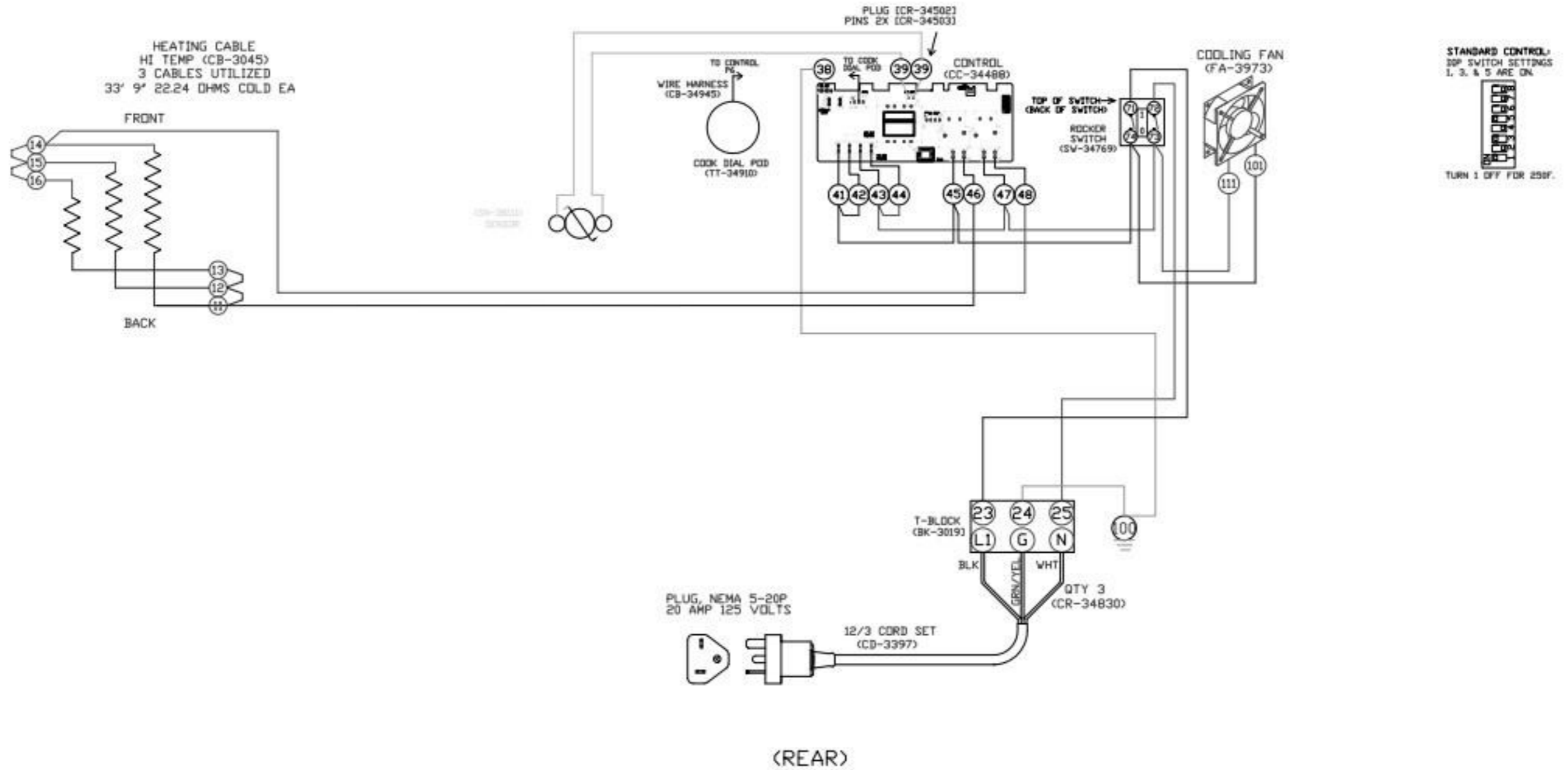
6	7572	Wire Connector Upgrade	4-24-16	TJG
5	7317	Sensor Wire Upgrade	3-18-16	TJG
4	6759	Add CD-36231 CORDSET	7-15-14	TJG
REV	ECO	DESCRIPTION	DATE	APP
500-TH/II 208-240V, 230V				
<b>ALTO-SHAAM</b>		<b>WIRING DIAGRAM</b>		
BY: JPK DATE: 7/1/10		DWG: 77361	SHEET 1_OF_1	

208-240V 60HZ, 230V 50/60HZ

MN-29756 (Rev. 4) 10/16 • TH-SK Series Cook, Hold, Smoke • 38

VIEW IS FROM REAR OF UNIT

(FRONT)



MN-29756 (Rev. 4) 10/16 • TH-SK Series Cook, Hold, Smoke • 37

WIRE ASSEMBLIES  
SEE 5012380 FOR WIRE ASSEMBLY

4	7572	Wire Connector Upgrade	4-25-16	TJG
3	7317	Sensor Wire Upgrade	3-18-16	TJG
2	6076	BONNETLESS UPGRADE	3-28-12	NVA
REV	ECO	DESCRIPTION	DATE	APP
500-TH/II 120V 60HZ				
<b>ALTO-SHAAM</b>		<b>WIRING DIAGRAM</b>		
BY: JPK DATE: 6/23/10		DWG: 77360	SHEET 1_OF_1	