



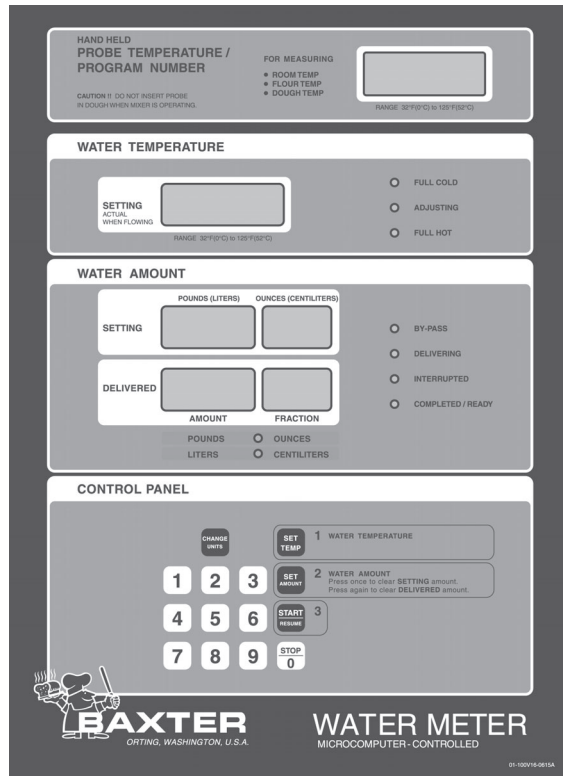
# CATALOG OF REPLACEMENT PARTS

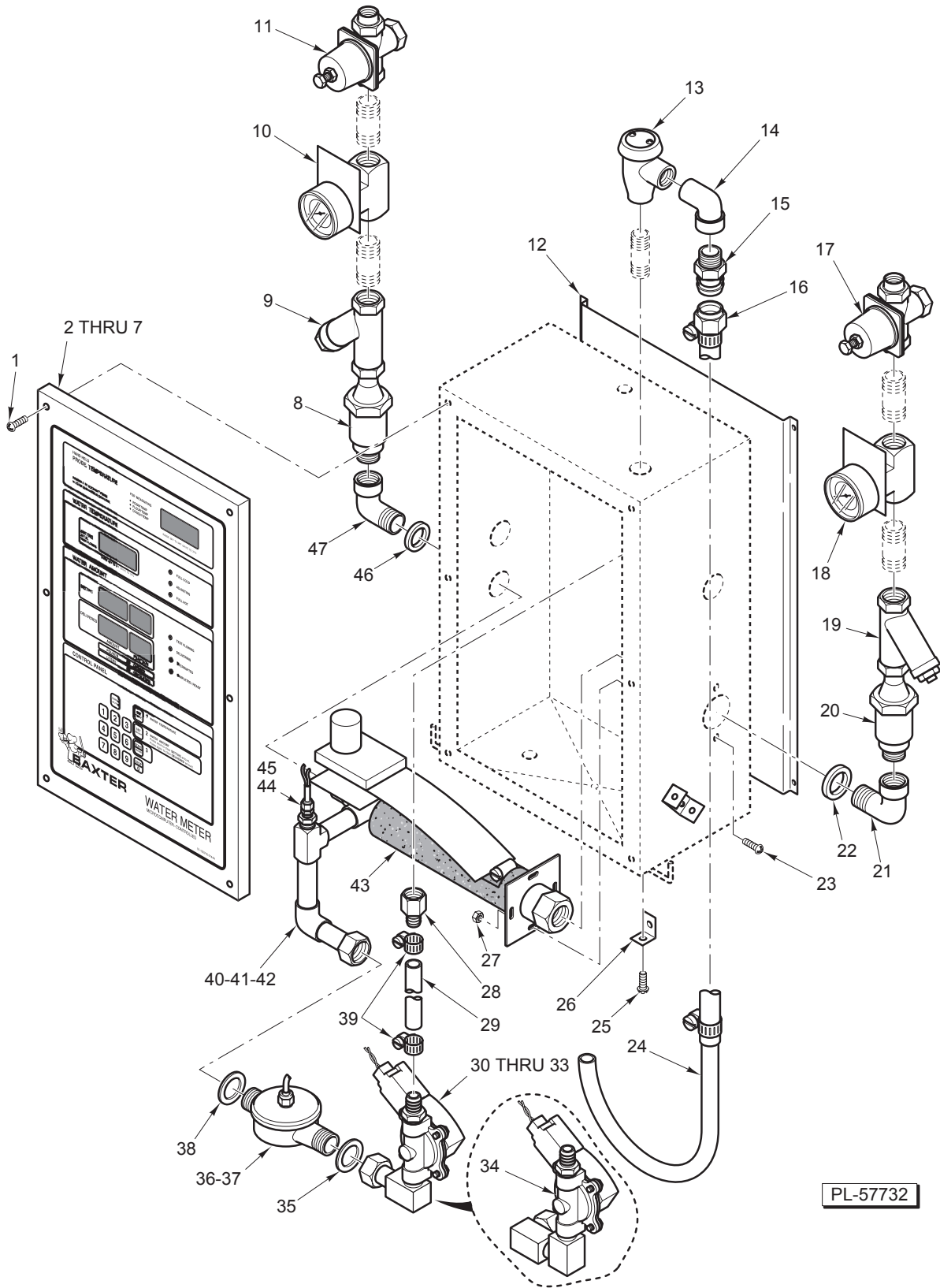
## MODEL SP600 WATER METER

ML-132392

PRIOR ML COVERED IN THIS MANUAL

ML-132120



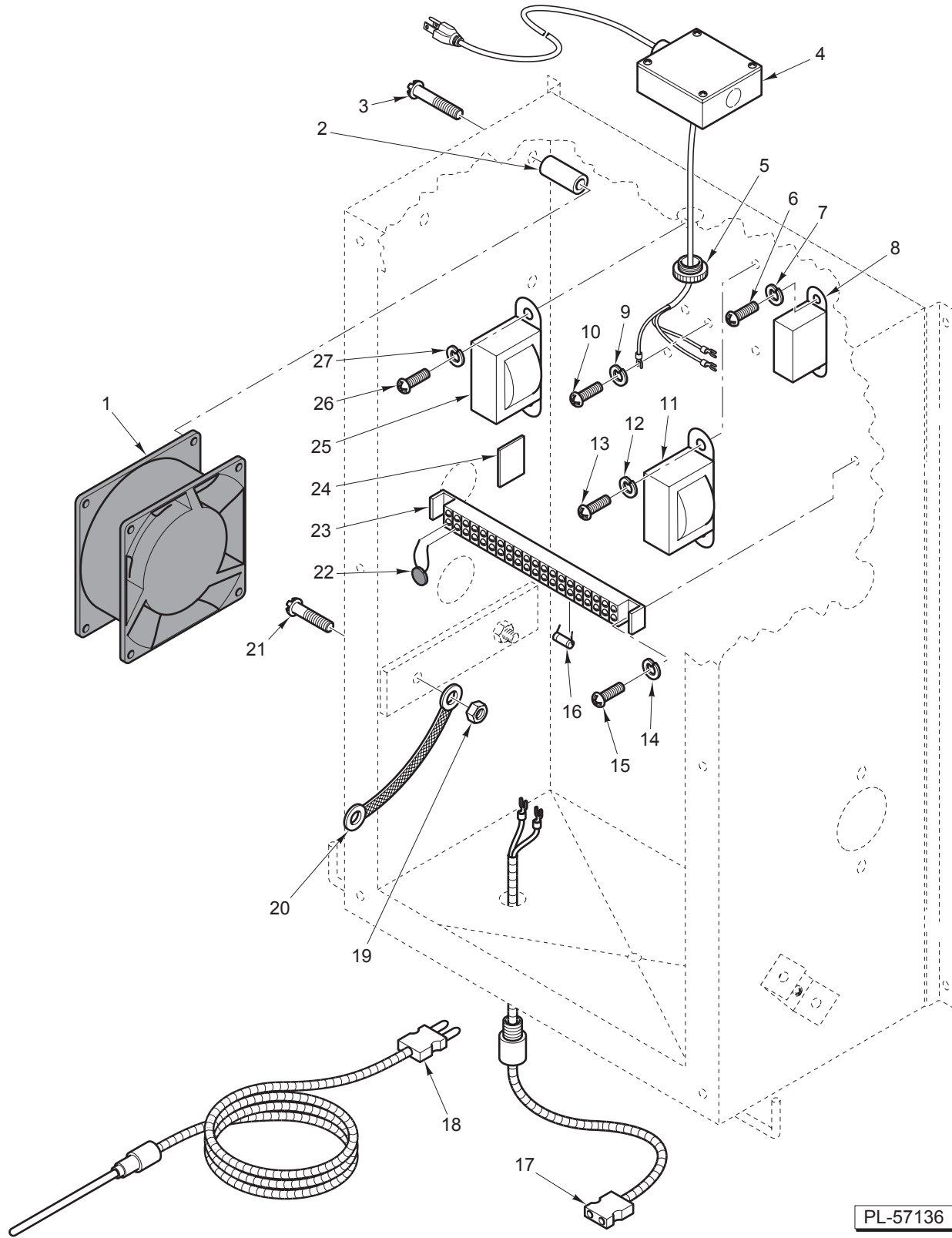


WATER METER PIPING AND COVER

**WATER METER PIPING AND COVER**

ILLUS. PL-57732	PART NO.	NAME OF PART	AMT.
*1	-	Mach. Screw 10-32 x 1/2 Truss Hd. ....	6
2	01-10J410-00001	Cover – Water Meter Assy. (W/O Chiller) (ML-132120) .....	1
3	01-10J410-00005	Cover – Water Meter Assy. (W/Chiller) (ML-132120) .....	1
4	01-10J410-00009	Cover – Water Meter Assy. (ML-132392) .....	1
5	01-10J410-00010	Cover – Water Meter Assy. (Dunkin Donuts) (ML-132392) .....	1
6	01-10J638-00001	Kit – PCB Water Meter (ML-132120) .....	1
7	01-10J459-00001	Key Pad Replacement Assy. (ML-132120) .....	1
8	01-100V17-00349	Valve – Dual Check .....	1
9	01-100V17-00275	Strainer (Y) .....	1
10	01-10J385-00001	Pressure Gauge Assy. ....	1
11	01-100V17-00330	Regulator – Pressure .....	1
12	01-10J318-00001	Bracket – Mounting .....	1
13	01-100V17-00333	Vacuum Breaker .....	1
14	01-100V17-00322	Elbow Street (Brass) .....	1
15	01-100V17-00494	Coupler – Quick Disconnect (1/2 Male) .....	1
16	01-100V17-00494	Coupler – Quick Disconnect (1/2 Female) .....	1
17	01-100V17-00330	Regulator – Pressure .....	1
18	01-10J385-00001	Pressure Gauge Assy. ....	1
19	01-100V17-00275	Strainer (Y) .....	1
20	01-100V17-00349	Valve – Dual Check .....	1
21	01-100V17-00352	Elbow 3/4 Street (Brass) .....	1
22	01-100V16-00155	Washer – Fiber .....	1
*23	-	Mach. Screw 10-32 x 1/2 Truss Hd. ....	2
24	01-10J343-00001	Hose – Dispensing .....	1
*25	-	Mach. Screw 10-32 x 1/2 Truss Hd. ....	1
26	01-10J351-00001	Clip – Mount .....	1
*27	-	Nut 10-32 Hex Nylock .....	2
28	01-100V17-00338	Fitting – Barb Hose 1/2 x 5/8 (Brass) .....	1
29	01-100V17-00320	Hose 5/8 Braided (Approx. 9 1/2 Long) .....	1
30	01-10J423-00004	Solenoid Pipe Assy. (W/O Chiller) (ML-132120) .....	1
31	01-10J423-00005	Solenoid Pipe Assy. (W/Chiller) (DDI) (ML-132120) (Nut & Union) .....	1
32	01-10J423-00007	Solenoid Pipe Assy. (ML-132392) .....	1
33	01-10J423-00008	Solenoid Pipe Assy. (ML-132392) .....	1
34	01-10J423-00006	Solenoid Pipe Assy. (W/Chiller) (ML-132120) (Union & Male Half) .....	1
35	01-100V16-00155	Washer – Fiber .....	1
36	01-10J460-00001	Sensor – Flow Assy. (ML-132120) .....	1
37	01-10J460-00002	Sensor – Flow Assy. (ML-132392) .....	1
38	01-100V16-00155	Washer – Fiber .....	1
39	01-100V1-00033	Clamp – Band .....	2
40	01-10J422-00001	Mixer Valve Pipe Assy. (W/O Chiller) (ML-132120) .....	1
41	01-10J422-00002	Mixer Valve Pipe Assy. (W/Chiller) (ML-132120) .....	1
42	01-10J422-00003	Mixer Valve Pipe Assy. (ML-132392) .....	1
43	01-10J405-00001	Insulator – Pipe .....	1
44	01-10J422-00101	Probe – Temperature (Internal) (ML-132120) .....	1
45	01-10J422-00102	Probe – Temperature (Internal) (ML-132392) .....	1
46	01-100V16-00155	Washer – Fiber .....	1
47	01-100V17-00352	Elbow 3/4 Street (Brass) .....	1
	01-10J566-00001	Kit – Interface (W/Chiller) .....	1

\* To Be Purchased Locally.



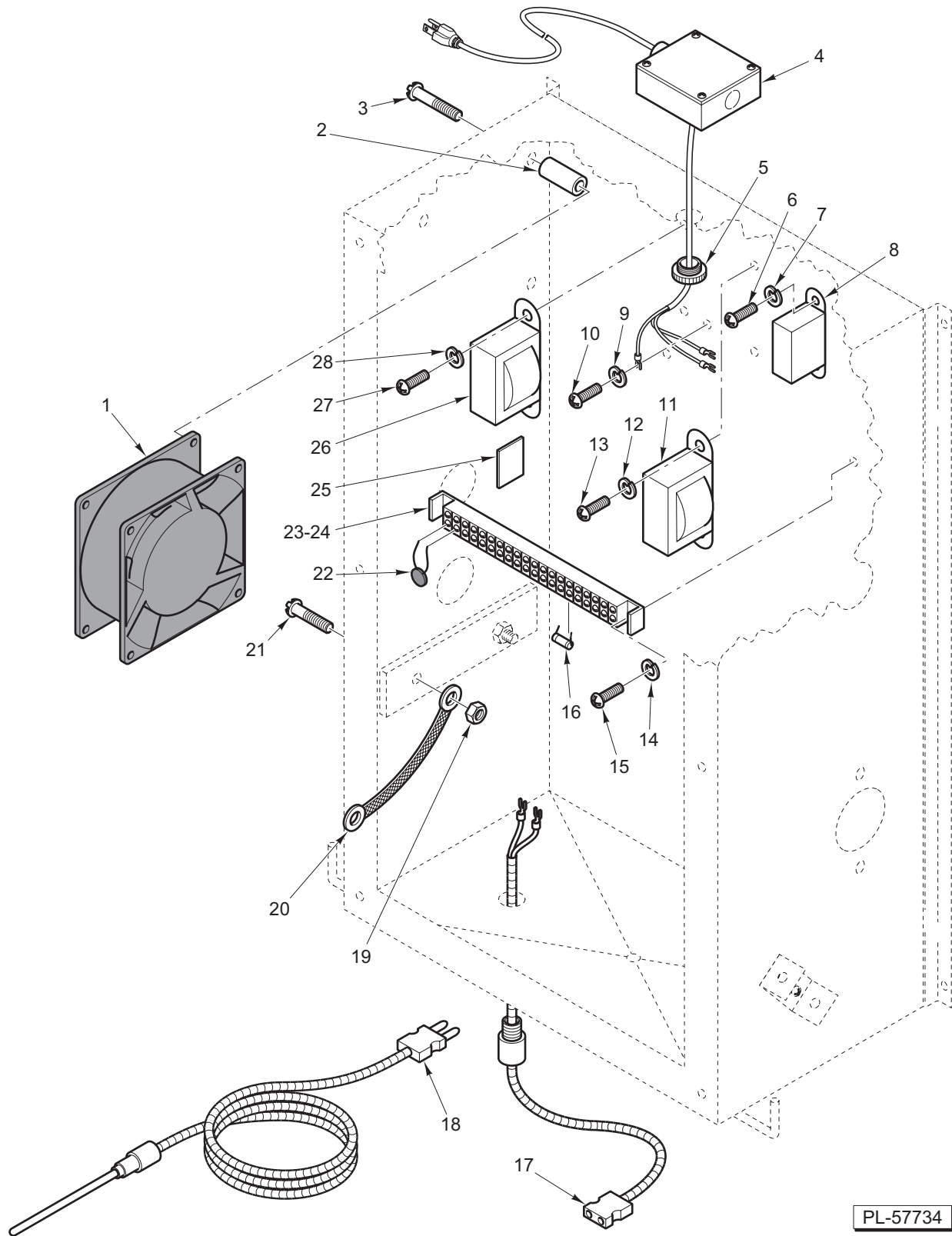
PL-57136

**ELECTRICAL COMPONENTS (ML-132120)**

**ELECTRICAL COMPONENTS (ML-132120)**

ILLUS. PL-57136	PART NO.	NAME OF PART	AMT.
1	01-10J446-00001	Fan .....	1
2	01-1000V5-00160	Spacer – Nylon .....	3
*3	-	Mach. Screw 10-32 x 3/4 Truss Hd. ....	3
4	01-10J595-00001	Box – Junction .....	1
5	01-100V11-00102	Nipple – Chase .....	1
*6	-	Mach. Screw 6-32 x 1/2 Rd. Hd. ....	2
*7	-	Lockwasher .....	2
8	01-10J395-00001	Relay Assy. ....	1
*9	-	Lockwasher .....	1
*10	-	Mach. Screw 6-32 x 1/2 Rd. Hd. ....	1
11	01-100V10-00110	Transformer – Primary .....	1
*12	-	Lockwasher .....	2
*13	-	Mach. Screw 6-32 x 1/2 Rd. Hd. ....	2
*14	-	Lockwasher .....	2
*15	-	Mach. Screw 6-32 x 1/2 Rd. Hd. ....	2
16	01-10J630-00001	Resistor .....	1
17	01-10J581-00001	Thermistor – Extension Cord (Bottom) .....	1
18	01-100V10-00097	Probe – Temperature .....	1
*19	-	Nut 1/4-20 Hex Nylock .....	2
20	01-10J444-00001	Strap – Ground .....	1
*21	-	Mach. Screw 1/4-20 x 1/2 Truss Hd. ....	2
22	01-10J631-00001	Suppressor .....	1
23	01-1000V5-00112	Terminal Block .....	1
24	01-1000V5-00023	Pad – Mounting .....	2
25	01-100V10-00110	Transformer – Primary .....	1
*26	-	Mach. Screw 6-32 x 1/2 Rd. Hd. ....	2
*27	-	Lockwasher .....	2
	01-10J581-00002	Thermistor – Extension Cord (Side) .....	1
	01-100V10-00133	Transformer Assy. ....	1

\* To Be Purchased Locally.



PL-57734

**ELECTRICAL COMPONENTS (ML-132392)**

**ELECTRICAL COMPONENTS (ML-132392)**

ILLUS. PL-57734	PART NO.	NAME OF PART	AMT.
1	01-10J446-00002	Fan .....	1
2	01-1000V5-00160	Spacer – Nylon .....	3
*3	-	Mach. Screw 10-32 x 3/4 Truss Hd. ....	3
4	01-10J595-00002	Box – Junction .....	1
5	01-100V11-00102	Nipple – Chase .....	1
*6	-	Mach. Screw 6-32 x 1/2 Rd. Hd. ....	2
*7	-	Lockwasher .....	2
8	01-10J395-00002	Relay Assy. ....	1
*9	-	Lockwasher .....	1
*10	-	Mach. Screw 6-32 x 1/2 Rd. Hd. ....	1
11	01-100V10-00231	Transformer – Primary .....	1
*12	-	Lockwasher .....	2
*13	-	Mach. Screw 6-32 x 1/2 Rd. Hd. ....	2
*14	-	Lockwasher .....	2
*15	-	Mach. Screw 6-32 x 1/2 Rd. Hd. ....	2
16	01-100V23-00R93	Resistor .....	1
17	01-10J581-00003	Thermistor – Extension Cord (Bottom) .....	1
18	01-100V10-00097	Probe – Temperature .....	1
*19	-	Nut 1/4-20 Hex Nylock .....	2
20	01-10J444-00001	Strap – Ground .....	1
*21	-	Mach. Screw 1/4-20 x 1/2 Truss Hd. ....	2
22	01-10J631-00001	Suppressor .....	1
23	01-1000V5-00105	Terminal – Section .....	20
24	01-1000V5-00106	Terminal – End Section .....	1
25	01-1000V5-00023	Pad – Mounting .....	2
26	01-100V10-00231	Transformer – Primary .....	1
*27	-	Mach. Screw 6-32 x 1/2 Rd. Hd. ....	2
*28	-	Lockwasher .....	2
	01-10J639-00001	Fuse Assy. ....	1
	01-10J581-00004	Thermistor – Extension Cord (Side) .....	1
	01-10J640-00001	Transformer Assy. ....	1

\* To Be Purchased Locally.

