

B[®]
U
T
C
H
E
R
B
O
Y[®]

MIXER GRINDERS

1000/56, 1000/56F, 100066S



1000/66S SHOWN



MADE IN USA



“BUTCHER BOY”

QUALITY

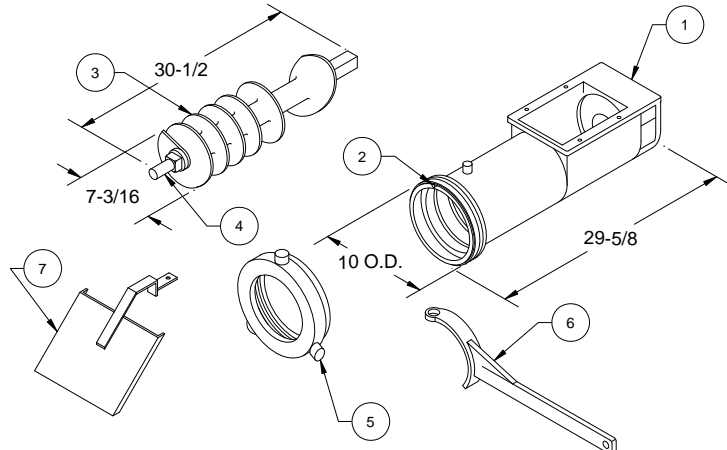
DEPENDABILITY

SERVICE

BUTCHER BOY 56, 56F & 66S – S/S CUTTING GROUP

FOR SUPER 66

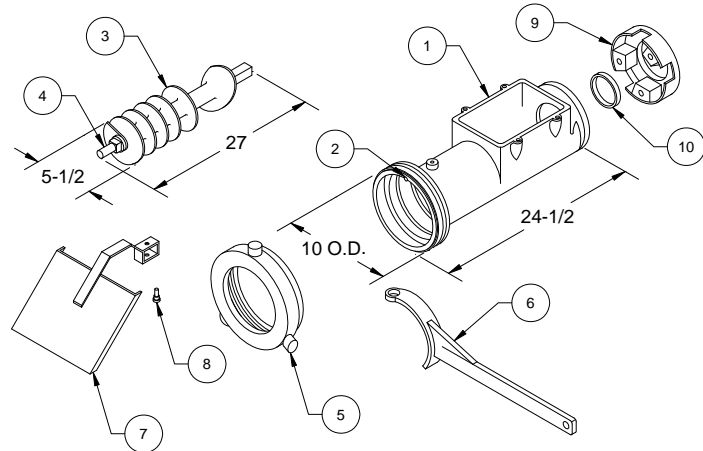
ITEM	PART#	DESCRIPTION	QTY.
1	0061291S	SS BOWL & LOCKING PIN	1
2	DP-08-28	PLATE LOCKING PIN	1
3	0061289S	SS FEED SCR. & STUD ASSY	1
4	0061293	FEED SCR. STUD (66S)	1
5	0058245S	SS KNIFE & PL RING (66 SUPER)	1
6	0058249	66 RING WRENCH	1
7	0061355	SS SPURT GUARD ASSY	1



FOR FLARED 56F

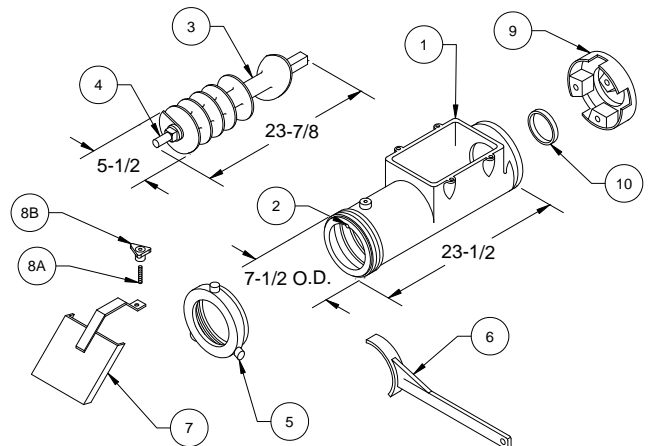
(56 BARREL FLARED TO A 66 PLATE)

ITEM	PART#	DESCRIPTION	QTY.
1	0058247S	SS BOWL & LOCKING PIN (56F)	1
2	DP-08-28	PLATE LOCKING PIN	1
3	0058251S	SS FEED SCR. & STUD ASSY (56F)	1
4	0058248	FEED SCREW STUD (56F)	1
5	0058245S	SS KNIFE & PL RING (66 SUPER)	1
6	0058249	66 RING WRENCH	1
7	0061215	SS SPURT GUARD ASSY	1
8	0061220	SPURT GUARD HOLDER	1
9	0058218S	SS SPACER W/BUSHING	1
10	0058219	BUSHING SPACER RING	1

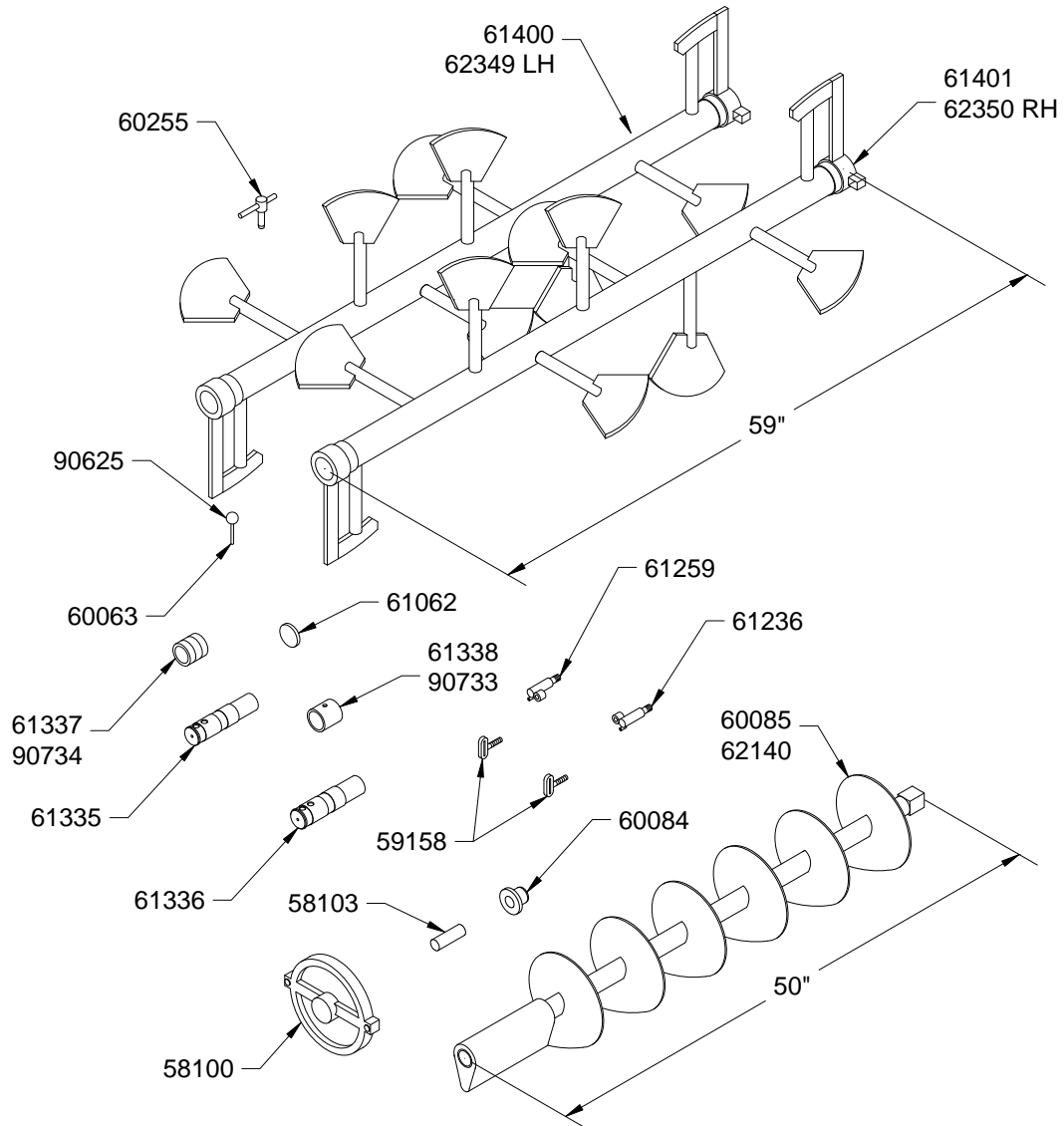


FOR 56 STD

ITEM	PART#	DESCRIPTION	QTY.
1	0057100S	SS BOWL & LOCKING PIN (STD 56)	1
2	DP-06-24	PLATE LOCKING PIN	1
3	0057181S	SS FEED SCR. & STUD ASSY (STD 56)	1
4	0059144	FEED SCREW STUD (STD 56)	1
5	0059108S	SS KNIFE & PL RING (STD 56)	1
6	0059233	56 RING WRENCH	1
7	0059305	SS SPURT GUARD ASSY	1
8A	0059233	SS SPURT GUARD STUD	1
8B	0059224	SPURT GUARD HAND WHEEL	1
9	0058219	BUSHING SPACER RING	1
10	0058218S	SS SPACER RING W/BUSHING	1

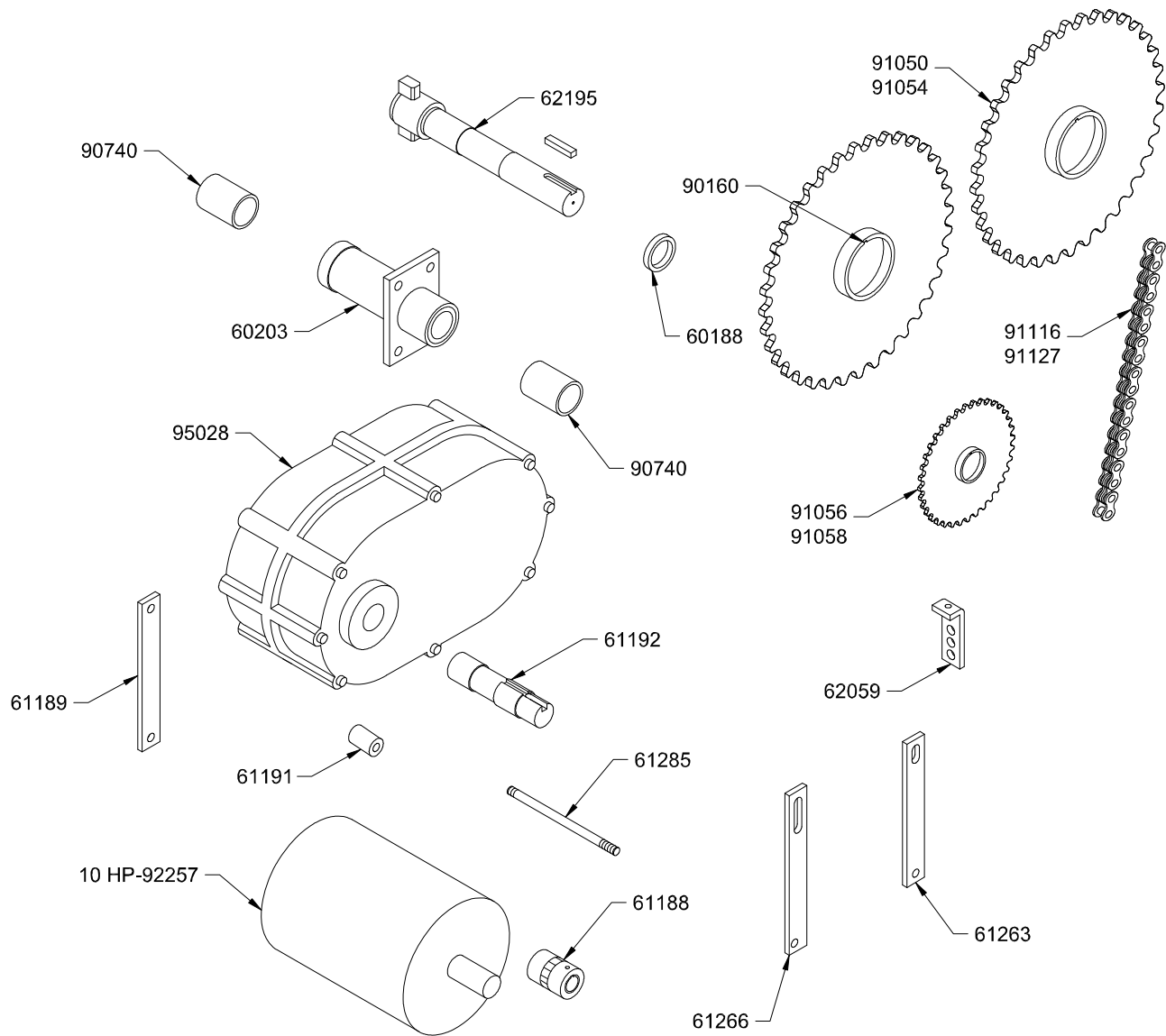


1000 MIXER GRINDER



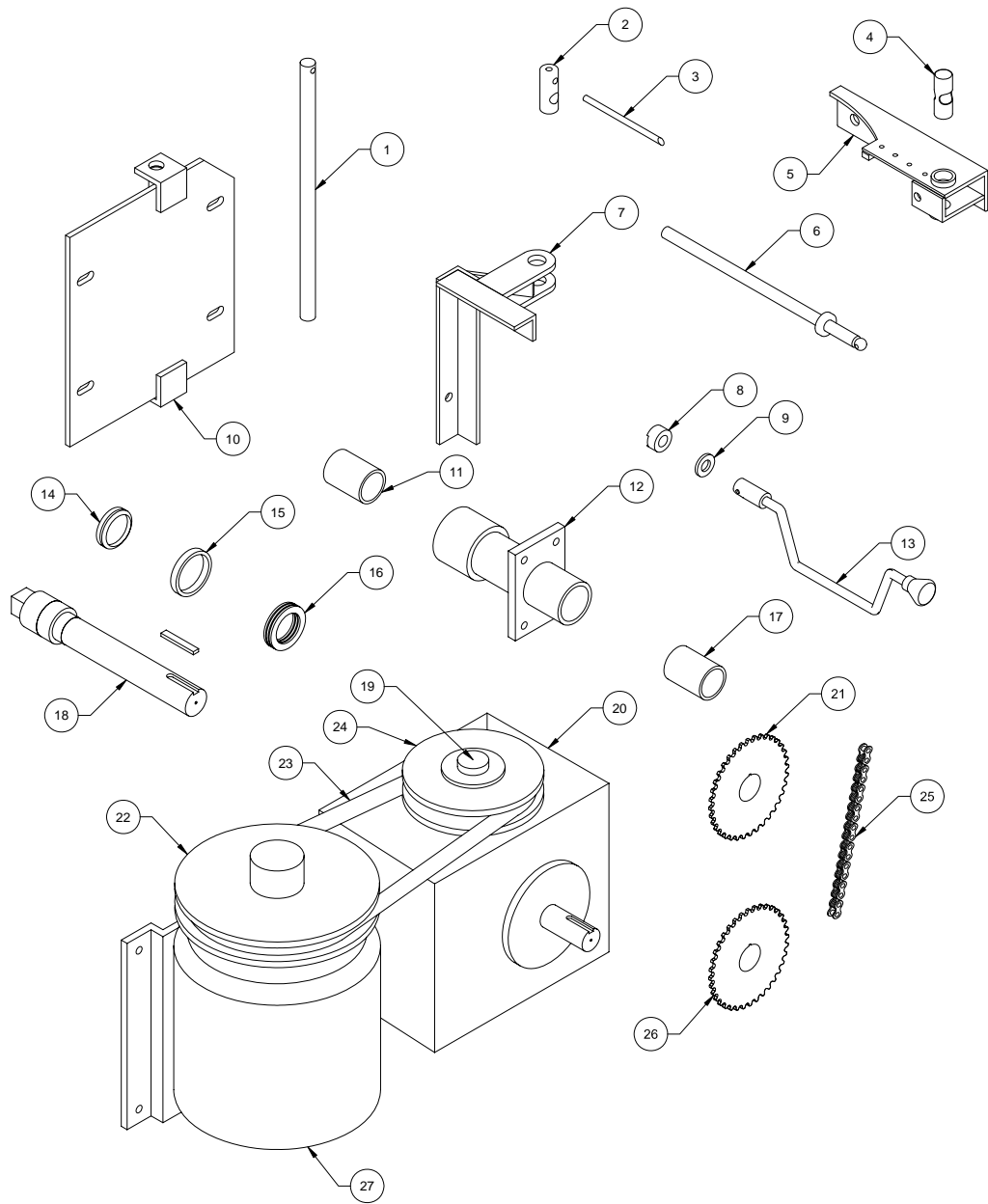
PART#	DESCRIPTION	QTY	PART#	DESCRIPTION	QTY
0058100	CONVEYOR COVER ASSEMBLY W/SHAFT	1	0061336	FRONT SHAFT RH 1-5/8 DIA.	1
0058103	SHAFT CONVEYOR	1	0061337	BUSHING LH	1
0059158	T-BOLT CONVEYOR COVER	2	0061338	BUSHING RH	1
0060063	LOCK PIN & CHAIN ASSEMBLY	2	0090625	KNOB	1
0060084	BUSHING-CONVEYOR ASSEMBLY	1	0090733	BUSHING S/N 102-119 1000 MG	1
0060085	CONVEYOR SCREW ASSY W/BUSHING 1000 MG	1	0090734	BUSHING S/N 102-119 1000 MG	1
0060255	T-BOLT ASSEMBLY FRONT	2	0061062	PLUG-PADDLE ASSY	1
0061236	CLAMP BRACKET RH	1	0061259	CLAMP BRACKET LH	1
0061400	LH PADDLE ASSY W/BUSHING 1000 MG	1	0061401	RH PADDLE ASSY W/BUSHING 1000 MG	1
0062140	CONVEYOR SCREW ASSY W/BUSHING 2000 MG	1	0062349	LH PADDLE ASSY W/ BUSHING 2000 MG	1
0062350	RH PADDLE ASSY W/BUSHING 2000 MG	1	0061355	FRONT SHAFT LH 1-1/2 DIA.	1

1000 MIXER GRINDER

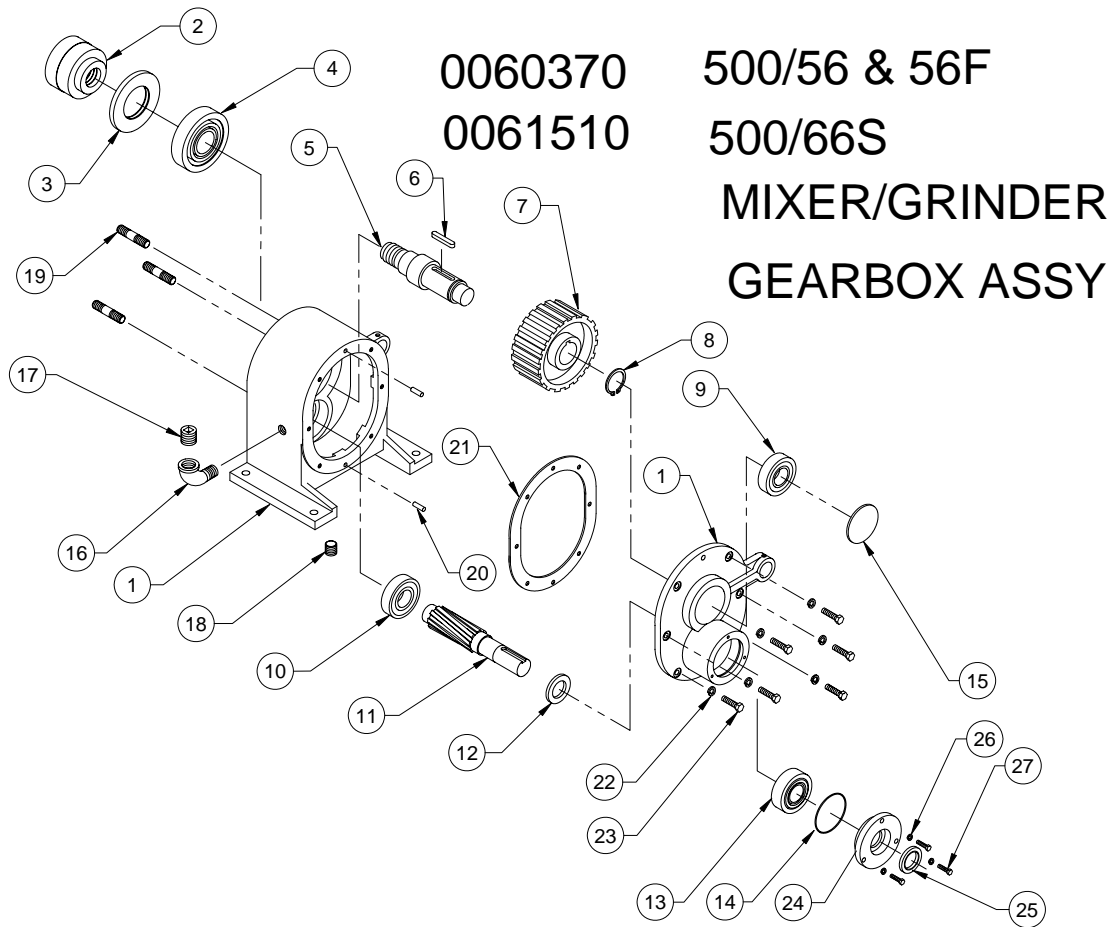


PART#	DESCRIPTION	QTY	PART#	DESCRIPTION	QTY
0060188	THRUST WASHER	2	0090160	HUB-DRIVEN SPROCKET	2
0060203	BEARING BRAKCTET W/ BUSHING	2	0090740	BUSHING-BEARING BRACKET	4
0061188	COUPLING ASSEMBLY	1	0091050	DRIVEN SPROCKET S/N 102-121	2
0061189	BRACE	2	0091054	DRIVEN SPROCKET S/N 121-ON	2
0061191	SPACER	4	0091056	DRIVE SPROCKET S/N 121-ON	1
0061192	REDUCER OUTPUT SHAFT	1	0091058	DRIVE SPROCKET S/N 102-121	1
0061263	FRONT BRACE	1	0091116	CHAIN ASSEMBLY S/N 121-ON	1
0061266	FRONT BRACE	1	0091127	CHAIN ASSEMBLY S/N 102-121	1
0061285	STUD	4	0092257	10 HP MOTOR	1
0062059	CHECKER ANGLE	1	0095028	REDUCER	1
0062195	DRIVE SHAFT ASSEMBLY	2			

CONVEYOR DRIVE 1000 MIXER GRINDER

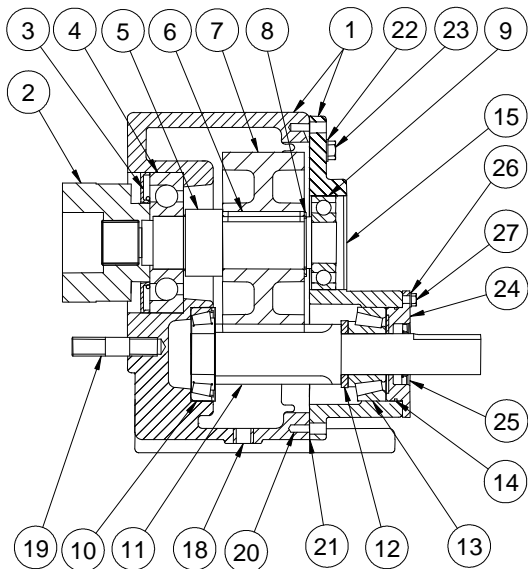


ITEM	PART#	DESCRIPTION	QTY.	ITEM	PART#	DESCRIPTION	QTY.
1	0060242S	MOTOR MOUNT PIN	1	15	0090432	SEAL	1
2	0060349S	SWIVEL GUIDE	1	16	0090325	THRUST BALL BEARING	1
3	0060348S	INDICATOR ROD	1	17	0090740	BUSHING	1
4	0060374S	SWIVEL UNIT	1	18	0060212S	DRIVE SHAFT	1
5	0060355S	INDICATOR BRACKET	1	19	0090199-146	HUB	1
6	0060361S	ADJUSTING SCREW	1	20	0095026	WORM REDUCER	1
7	0060350S	LEVER FORK	1	21	0091055	DRIVEN SPROCKET	1
8	0060364	BRONZE SPACER	1	22	0090195	VARI-SPEED PULLEY	1
9	0060369	WASHER SPACER	1	23	0090523	BELT	1
10	0060225S	MOTOR MOUNT BASE	1	24	0090196	SHEAVE	1
11	0090740	BUSHING	1	25	0091133	CHAIN ASSY	1
12	0060205S	BEARING BRK. W/BUSHING	1	26	0060322	DRIVE SPROCKET	1
13	0060365S	CRANK HANDLE	1	27	0092191	5 HP MOTOR	1
14	0090433	RING	1				



0060370
0061510

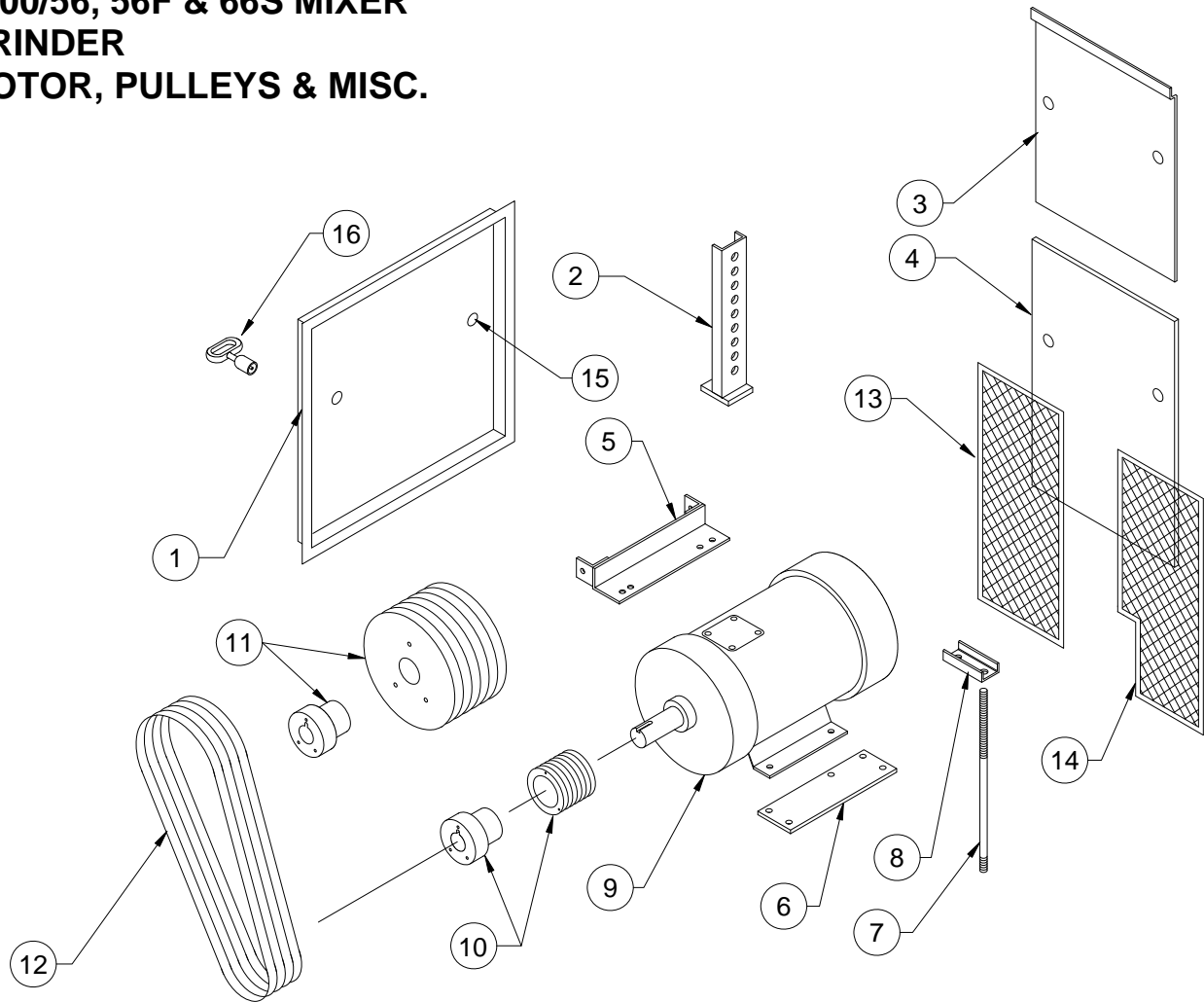
500/56 & 56F
500/66S
MIXER/GRINDER
GEARBOX ASSY



ITEM	PART#	DESCRIPTION	QTY.
1	0058240	GEAR HOUSING & LID ASSY	1
2	0058222	56 FEED SCREW CHUCK	1
	0601303-CS	66 FEED SCREW CHUCK	1
3	0090407	SEAL	1
4	0090312	THRUST BEARING	1
5	0061511	SHAFT	1
6	0059401-15	KEY	1
7	000058025-J	GEAR WHEEL (SOLD WITH ITEM 12)	1
8	0090235	RETAINING RING	1
9	0090306	BALL BEARING	1
10	0058527	TAPER BEARING ASSEMBLY	1
11	0060132	PINION (SOLD WITH ITEM 7)	1
12	0060133	SPACER	1
13	0090340	TAPER ROLLER BEARING	1
14	0090482	O-RING	1
15	0060134	PLUG	1
16	0090624	1/2" X 45° STREET ELBOW	1
17	0090623	1/2" PIPE PLUG	1
18	0095159	3/8" CSK SOC PIPE PLUG	1
19	0058231	STUD (56 & 56F)	3
	0061508	STUD (SUPER 66)	3
20	DP-05-16-N	DOWEL PIN Ø5/16 X 1" LG	2
21	0059095	GASKET	1
22	SLW-06-N	LOCK WASHER	6
23	HHCS-23-20-N	HEX HD CAP SCREW	6
24	0058526	END CAP	1
25	0090481	SEAL	1
26	SLW-04-S	LOCK WASHER	3
27	HHCS-19-10-S	HEX HD CAP SCREW	3

BUTCHER BOY 1000 MIXER GRINDER

1000/56, 56F & 66S MIXER GRINDER MOTOR, PULLEYS & MISC.



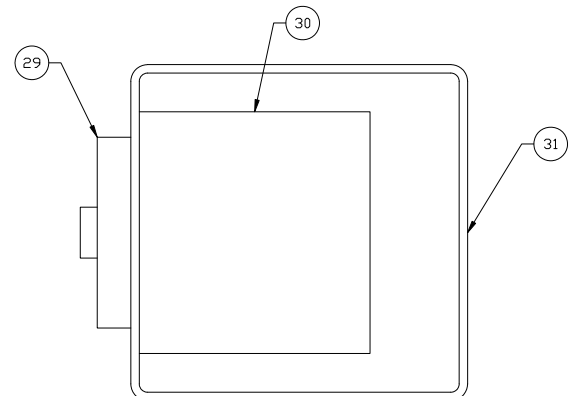
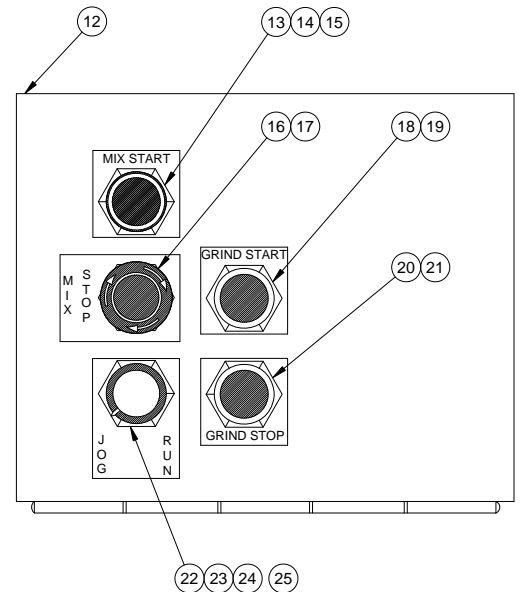
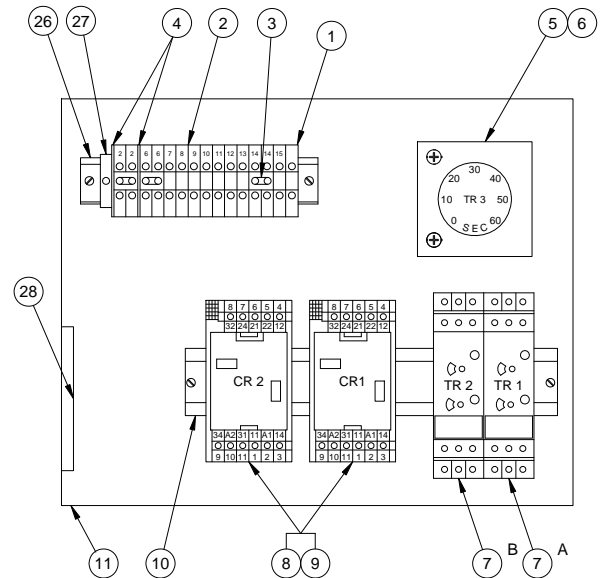
ITEM	PART#	DESCRIPTION	QTY
1	0061575	EXTENDED SIDE COVER	2
2	0030515	LEG	4
3	0061425	UPPER REAR COVER	1
4	0060411	LOWER REAR COVER	1
5	0062305S	MOTOR BASE ASSY 25 & 30HP	1
5	0060605S	MOTOR BASE ASSY 40HP	1
6	00623175	MOTOR PLATE 25 & 30HP	1
6	0060604S	MOTOR PLATE 40HP	1
7	0060139	BELT TENSION ROD ASSY	2
8	0060156	ROD EXTENSION	2
9	0092322	25HP MOTOR 200V 3PH ODP	1
9	0092345	30HP MOTOR 203-460V 3PH ODP	1
9	0092349	40HP MOTOR 230-460V 3PH ODP	1
10	0058406	MOTOR PULLEY & HUB STD 56 & 56F	1
10	0058407	MOTO PULLEY & HUB SUPPER 66	1
11	0058405	DRIVEN PULLEY & HUB	1
12	0090521	BELT	6
13	0060585	RH SAFETY SCREEN	1
14	0060586	LH SAFETY SCREEN	1
15	0095772	COVER LOCK	8
16	0060586	COVER KEY	1

BUTCHER BOY 1000 MIXER GRINDER

ELECTRICAL COMPONENTS

THIS PAGE FOR USE BY QUALIFIED REPAIR TECHNICIANS ONLY

ITEM	PART#	DESCRIPTION	QTY.
1	0093999-069	GROUND TERMINAL	1
2	0093999-070	TERMINAL BLOCK	14
3	0093999-071	JUMPER	3
4	0093999-072	TERMINAL SPACER	2
5	0093999-034	TIMER-JOG	1
6	0093999-035	TIMER BLOCK	1
7A	0093999-038	TIMER-MIXER	1
7B	0093999-038	TIMER-CONVEYOR	
8	0093999-172	BASE-RELAY	2
9	0093999-173	RELAY	2
10	0093999-077	DIN RAIL	1
11	0060539	MOUNTING PLATE	1
12	0060550	CONTROL BOX ASSY	1
13	0093999-078	BUTTON ASM/MIX-START	1
14	0093999-079	LAMP	1
15	0060571-1	PLATE-MIX START	1
16	0093999-080	BUTTON ASM/MIX STOP	1
17	0060571-4	PLATE-MIX STOP	1
18	0090999-031	BUTTON ASM/MIX-STOP	1
19	0060571-2	PLATE-GRIND START	1
20	0093999-081	BUTTON ASM/GRIND-STOP	1
21	0060571-3	PLATE-GRIND STOP	1
22	0093999-037	BLOCK-SWITCH	1
23	0093999-082	SWITCH ASM/JOG/RUN	1
24	0093999-083	CAP SWITCH	1
25	0060571-5	PLATE-JOG/RUN	1
26	0093999-084	RAIL TERMINAL	1
27	0093999-187	END BLOCK	1
28	0093999-216	MOISTURE CAN	1
29	0093999-055	ACTUATOR	1
30	0093999-057	LOAD SWITCH	1
31	0093999-171	ENCLOSURE	1

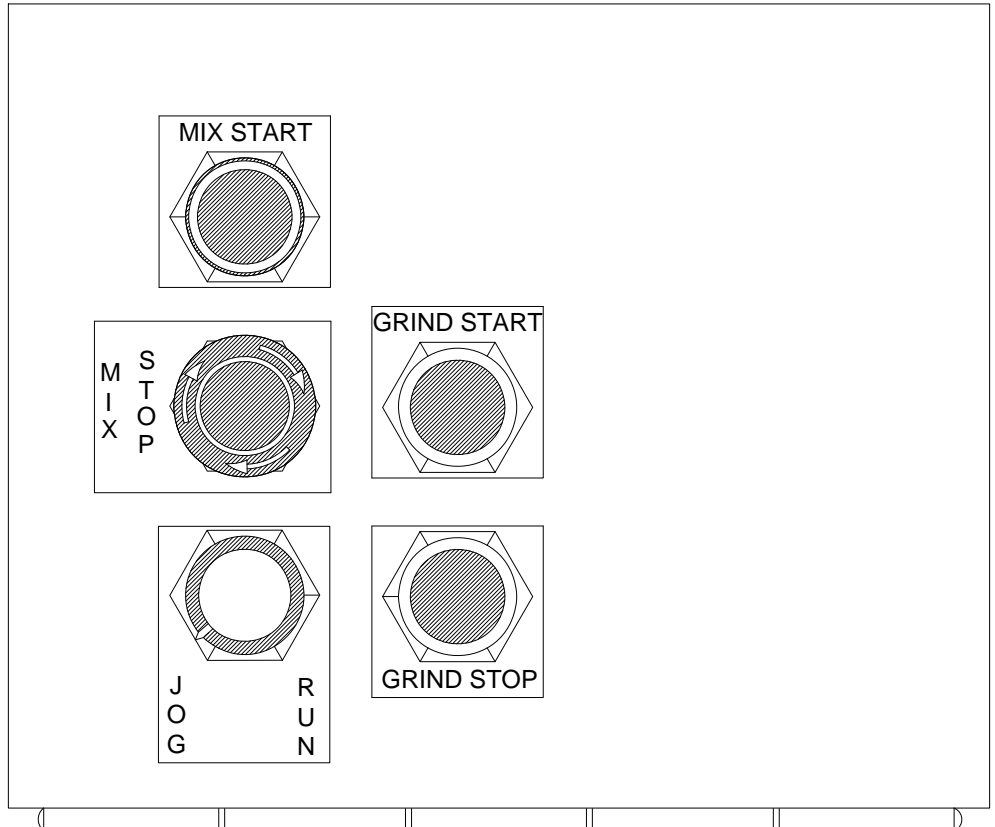


BUTCHER BOY 1000 MIXER GRINDER

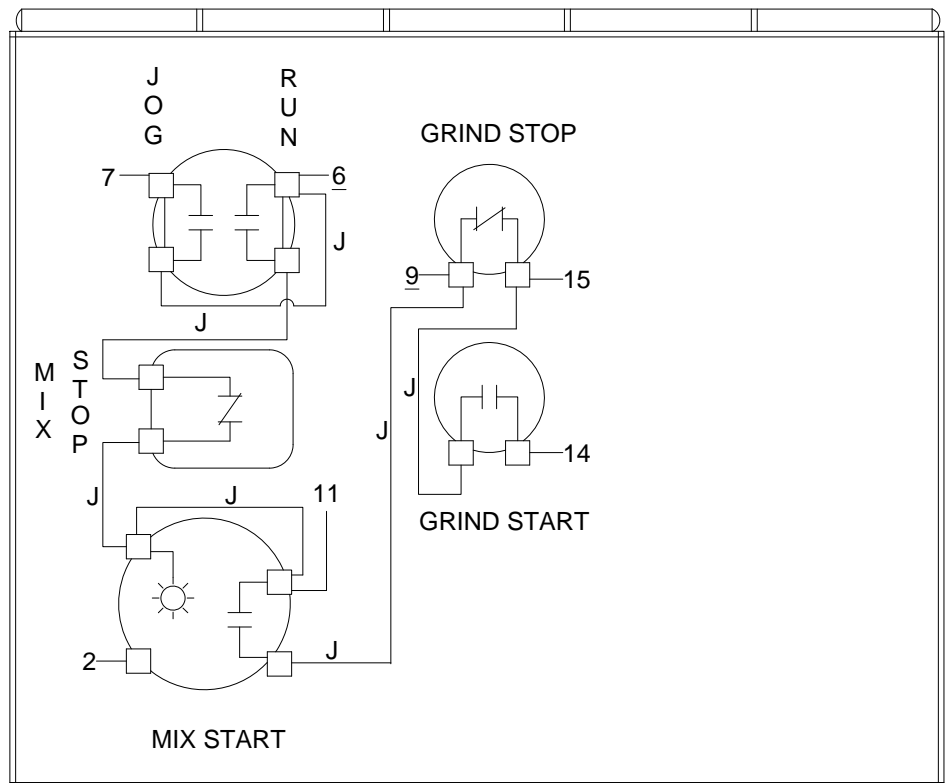
ELECTRICAL COMPONENTS

THIS PAGE FOR USE BY QUALIFIED REPAIR TECHNICIANS ONLY

CONTROL
BOX
OUTSIDE
COVER



CONTROL
BOX
INSIDE
COVER



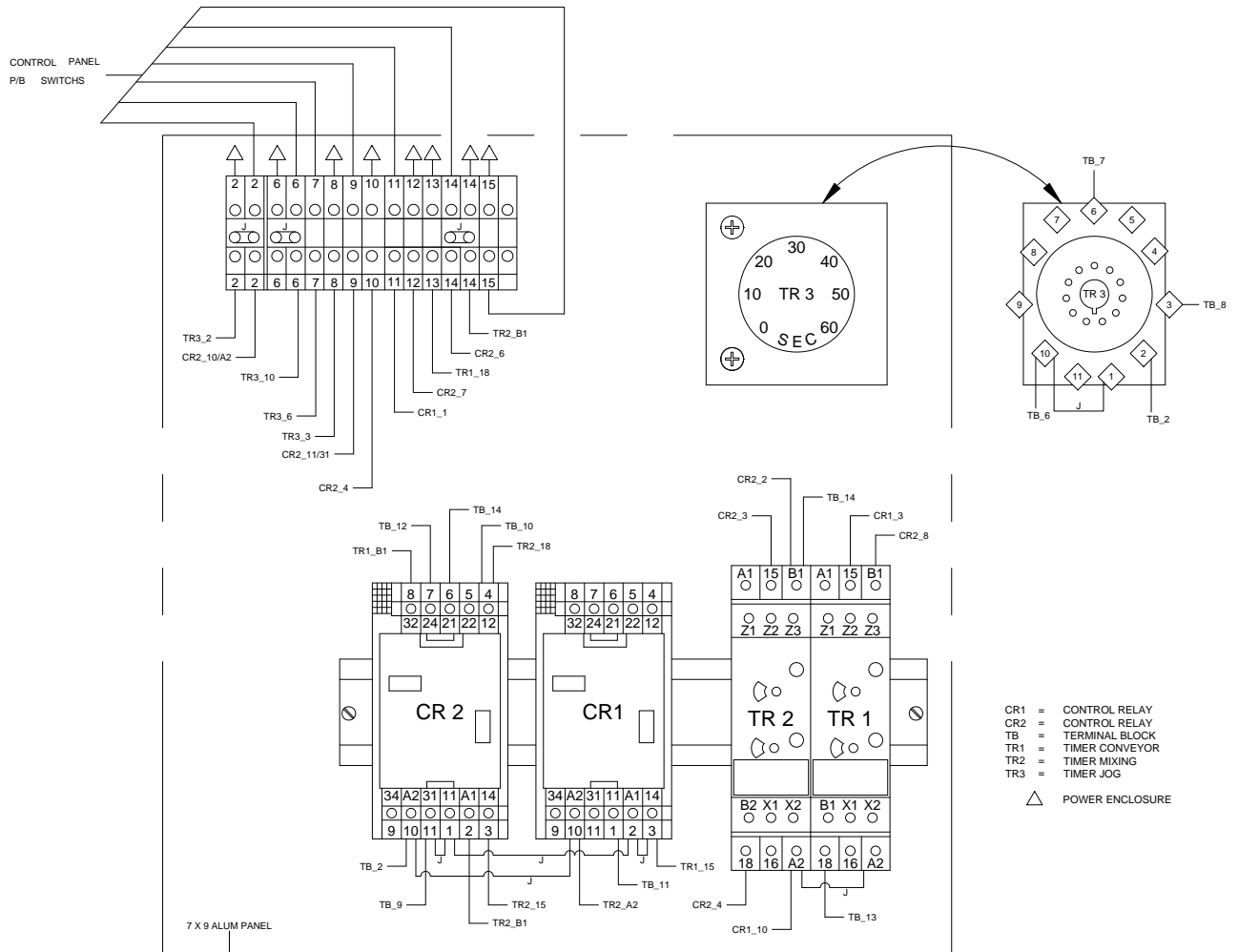
MG 24V CONTROL

BUTCHER BOY 1000 MIXER GRINDER

ELECTRICAL SCHEMATICS

THIS PAGE FOR USE BY QUALIFIED REPAIR TECHNICIANS ONLY

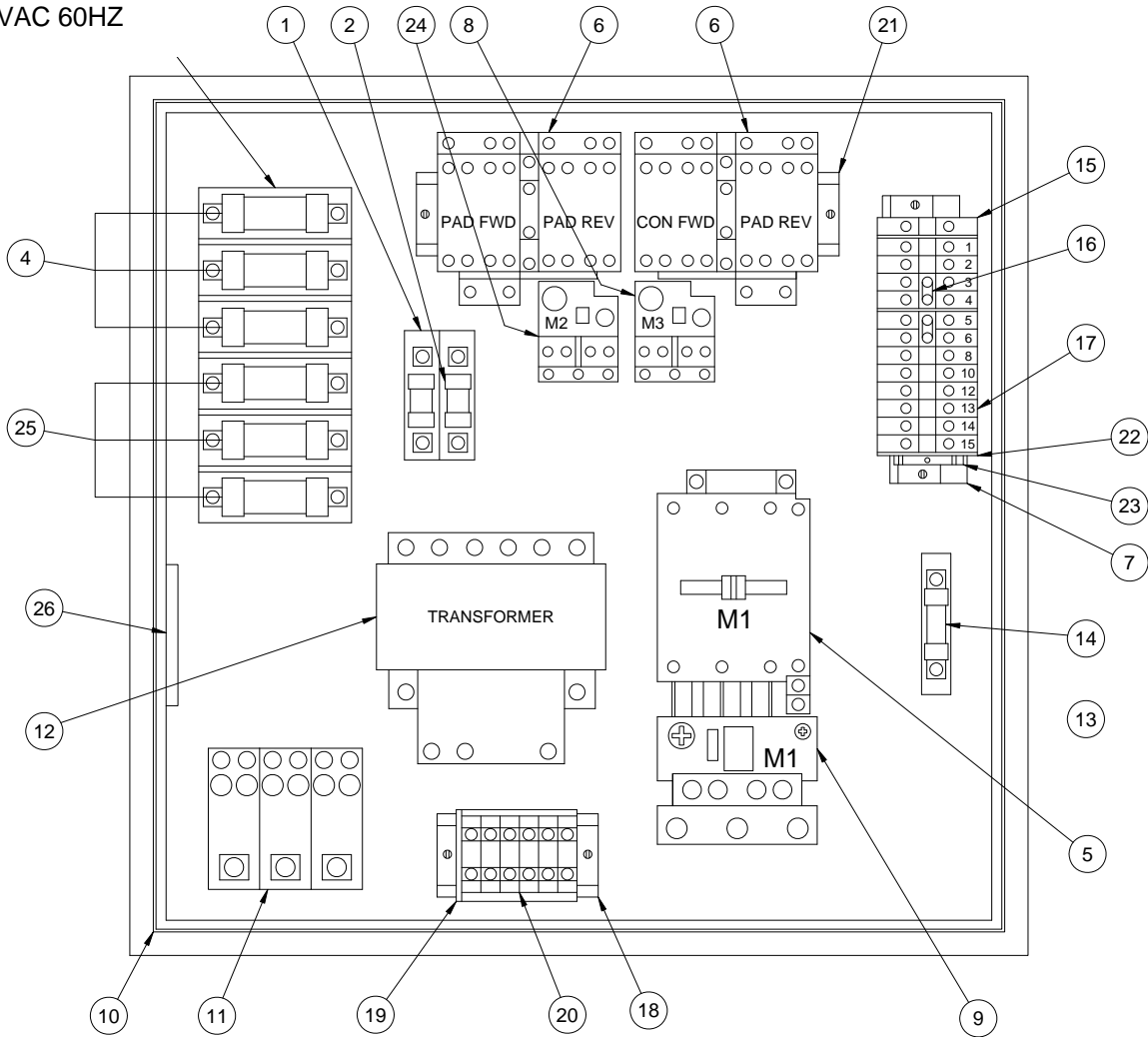
MG_CONTR (CONTROL PANEL) MANUAL ADJUSTED CONVEYOR



BUTCHER BOY 1000 MIXER GRINDER

FOR USE WITH MANUAL ADJUSTMENT CONVEYOR

25HP, 10HP & 5HP
460VAC 60HZ



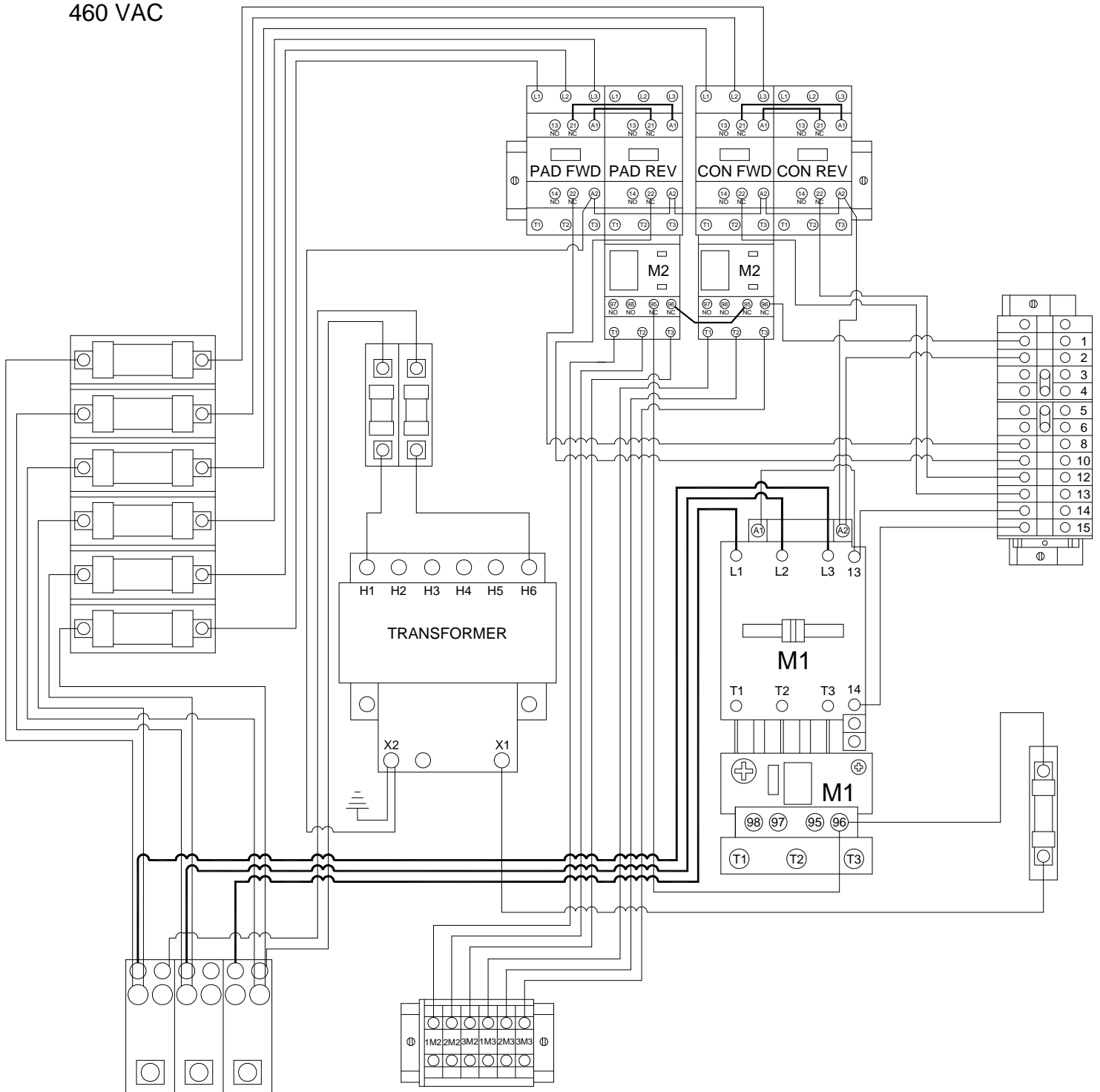
ITEM#	PART#	DESCRIPTION	QTY	ITEM#	PART#	DESCRIPTION	QTY
1	0093999-024	FUSE HOLDER (2)	1	14	0093999-050	FUSE	1
2	0093999-046	FUSE	2	15	0093999-072	GROUND TERM.	1
3	0093999-047	FUSE HOLDER (3)	2	16	0093999-071	JUMPER	2
4	0093999-219	FUSE 15 AMP	3	17	0093999-070	TERMINAL BLOCK	12
5	0093999-157	MOTOR CONTACTOR-GRINDER	1	18	0093796-#	RAIL-RELAY	6"
6	0093999-150	REVERSING CONTACTOR	2	19	0093999-152	END BLOCK	1
7	0093999-077	RAIL RELAY	5"	20	0093999-151	TERMINAL BLOCK	6
8	0093999-089	OVERLOAD-MIX	1	21	0093999-153	RAIL-RELAY	9"
9	0093999-169	OVERLOAD-GRINDER	1	22	0093999-069	END SEC. TERM.	1
10	0093999-142	ENCLOSURE	1	23	0093999-187	END SEC. TERM.	1
11	0093999-051	BLOCK	1	24	0093999-143	OVERLOAD-MIX	1
12	0093999-085	TRANSFORMER	1	25	0093999-220	FUSE 20AMP	3
13	0093999-049	FUSE HOLDER	1	26	0093999-216	MOISTURE CAN	1

BUTCHER BOY 1000 MIXER GRINDER

ELECTRICAL COMPONENTS

THIS PAGE FOR USE BY QUALIFIED REPAIR TECHNICIANS ONLY

460 VAC



BUTCHER BOY 1000 MIXER GRINDER

ELECTRICAL SCHEMATICS

THIS PAGE FOR USE BY QUALIFIED REPAIR TECHNICIANS ONLY

