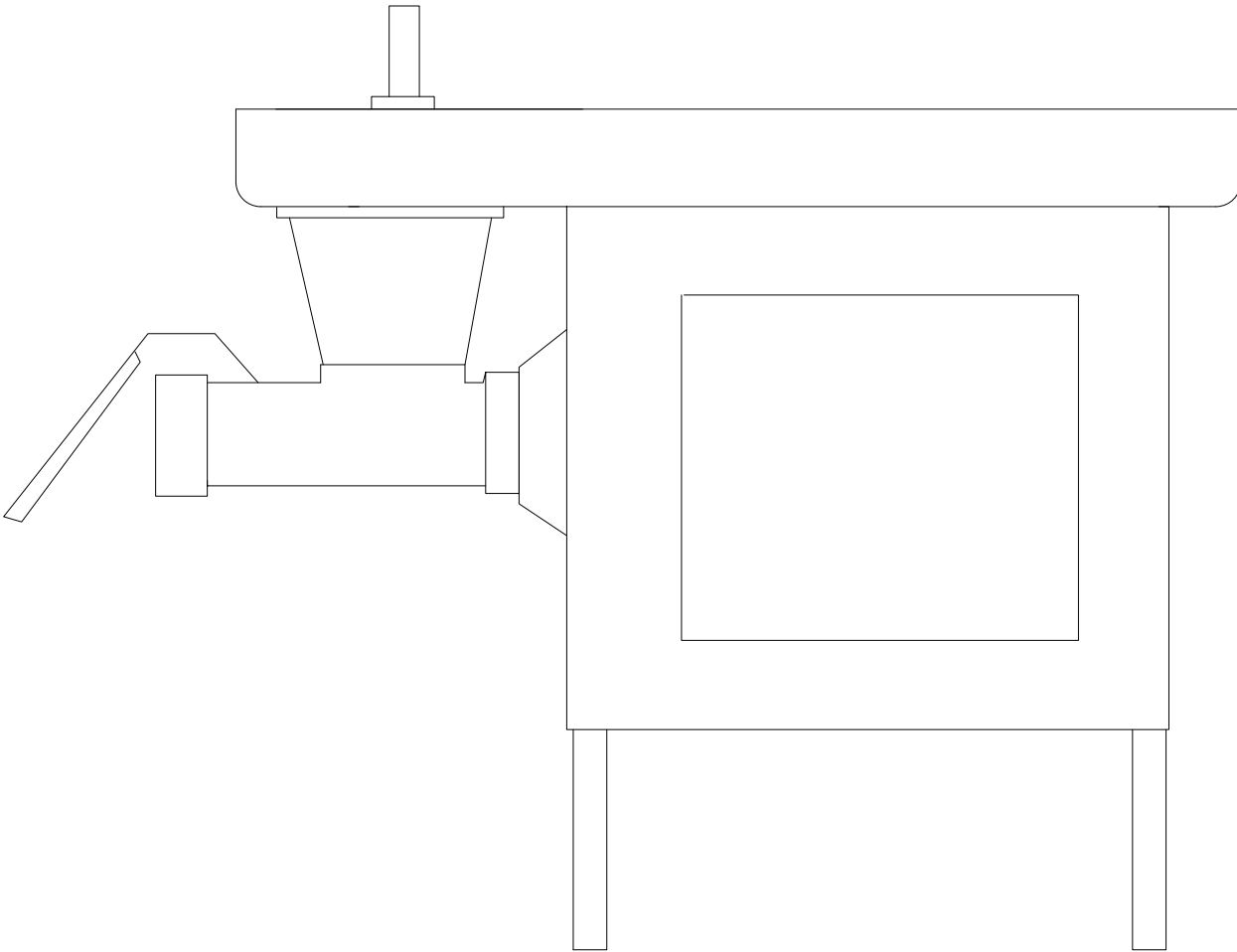


BUTCHER BOY A52 FLOOR GRINDER

OPERATING INSTRUCTIONS AND PARTS MANUAL

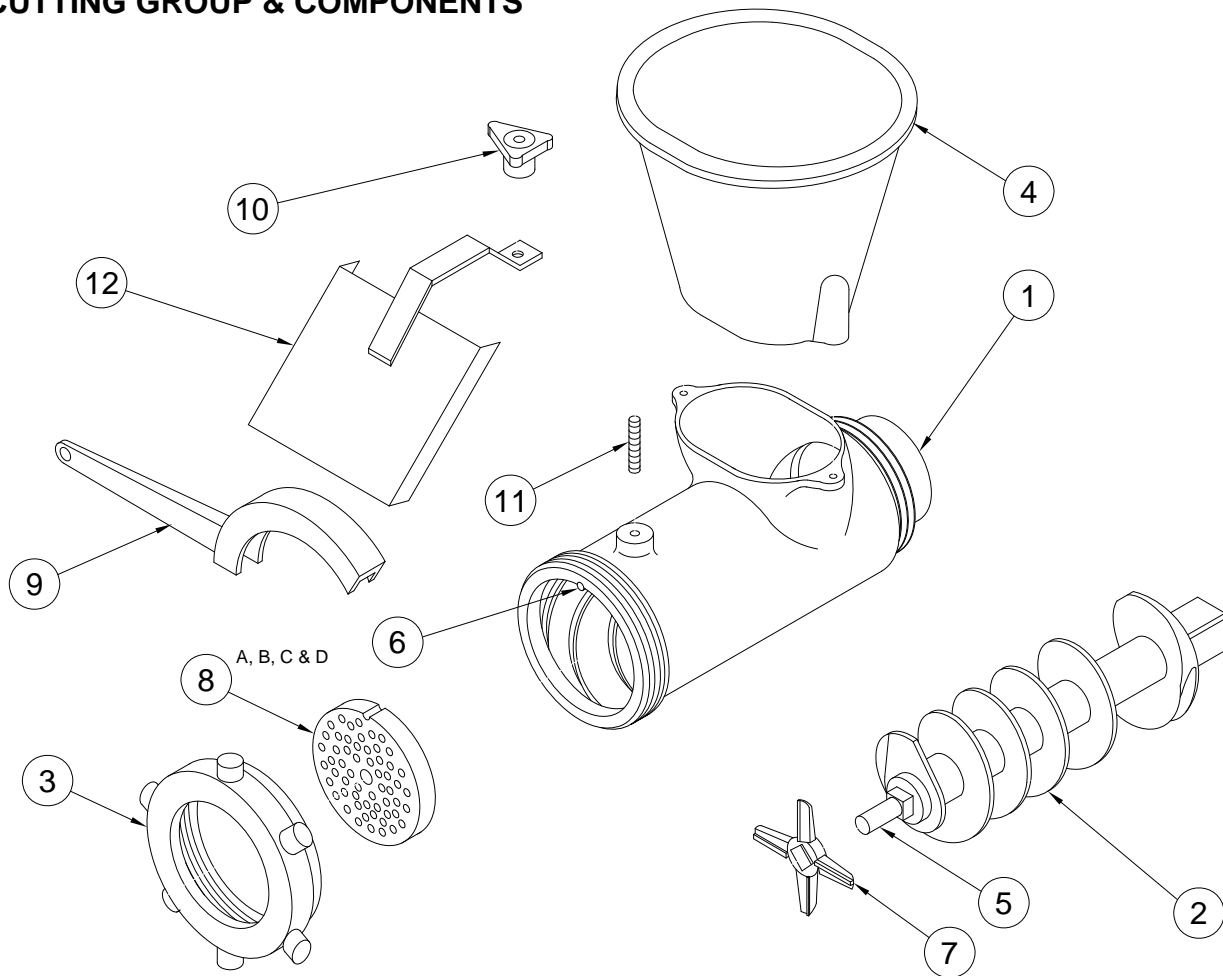


MANUFACTURED BY:

AMERICAN MEAT EQUIPMENT LLC.
640 MULBERRY AVENUE
SELMER, TN 38375
PH: 731-434-1012 • FAX 731-645-6056

BUTCHER BOY A52 FLOOR GRINDER

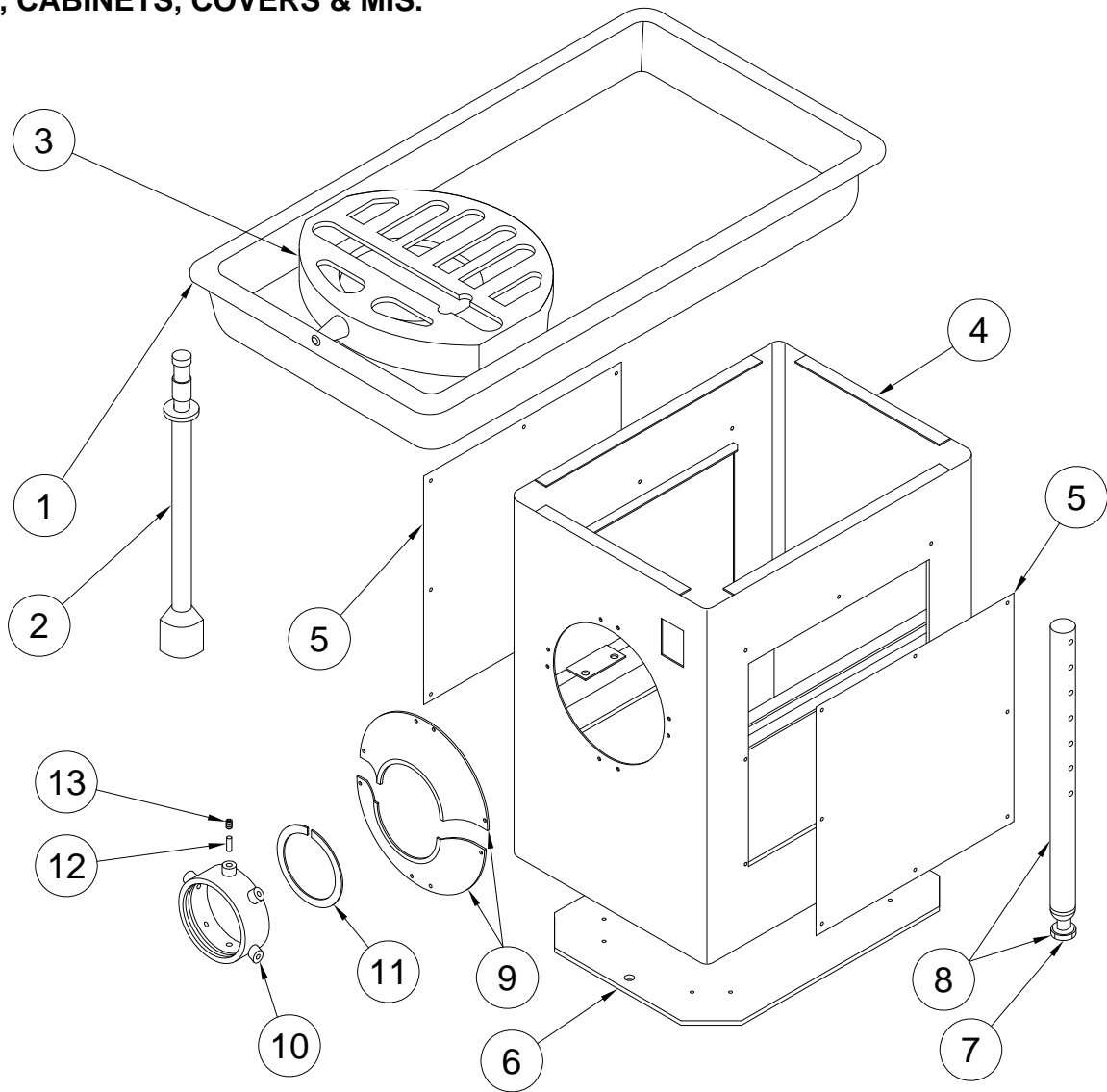
CUTTING GROUP & COMPONENTS



NO	PART#	DESCRIPTION	UOM
1	0053013	A52 STRAIGHT BOWL	1
2	0053042	FEED SCREW ASSEMBLY	1
3	0053016	A52 KNIFE & PLATE RING	1
4	0053014	BOWL EXTENSION	1
5	0052026	A52 FEED SCREW STUD	1
6	DP-05-24	PIN PLATE HOLDER	1
7	0090934P	52 KNIFE (PREMIUM)	1
8A	0090931	52-1/8" HOLE PLATE	1
8B	0090932	52-3/16" HOLE PLATE	1
8C	0090935	52-1/4" HOLE PLATE	1
8D	0090933	52-3/8" HOLE PLATE	1
9	0059188	WRENCH	1
10	0059224	HAND WHEEL SPURT GUARD	1
11	0059223	STUD HAND WHEEL	1
12	0059208	SPURT GUARD	1

BUTCHER BOY A52 FLOOR GRINDER

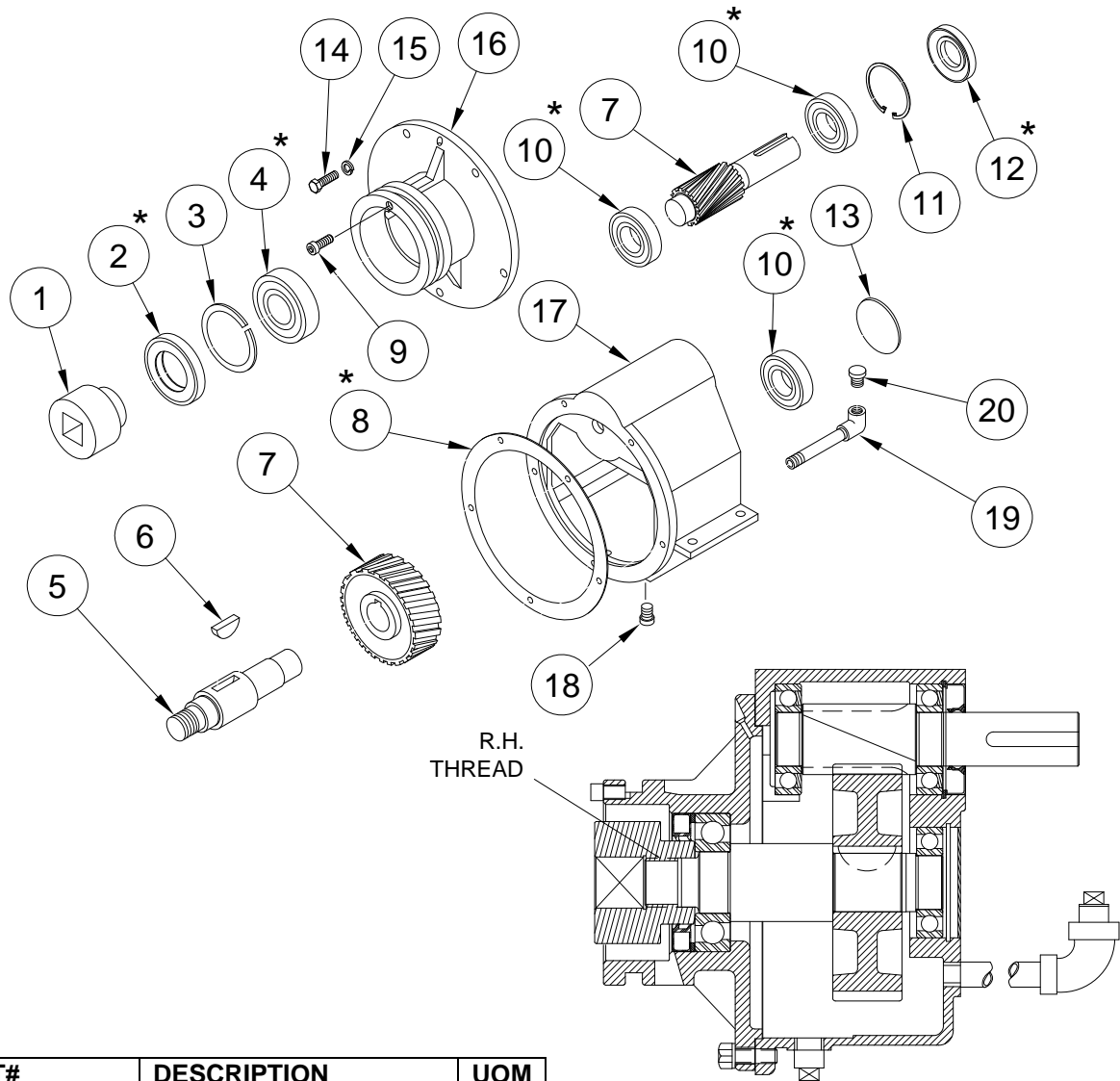
PAN, CABINETS, COVERS & MIS.



NO	PART#	DESCRIPTION	UOM	NO	PART#	DESCRIPTION	UOM
1	0059272	PAN	1	8	0059199S	SS LEG ASSEMBLY	4
2	0059396	A52 STOMPER	1	9	0059064	COVER RING	1
3	0059395	A52 GUARD	1	10	0059535	LOCKING RING	1
4	0059391	A42 & A52 CABINET	1	11	0059128	SNAP RING	1
5	0059143	SS SIDE COVER	2	12	DP-05-14-SS	PIN	6
6	0059177S	SS BOTTOM COVER	1	13	0095810	SCREW M10X1.5	6
7	0059390	FOOT ASSEMBLY	4				

BUTCHER BOY A52 FLOOR GRINDER

GEAR BOX ASSEMBLY 0059054 & COMPONENTS



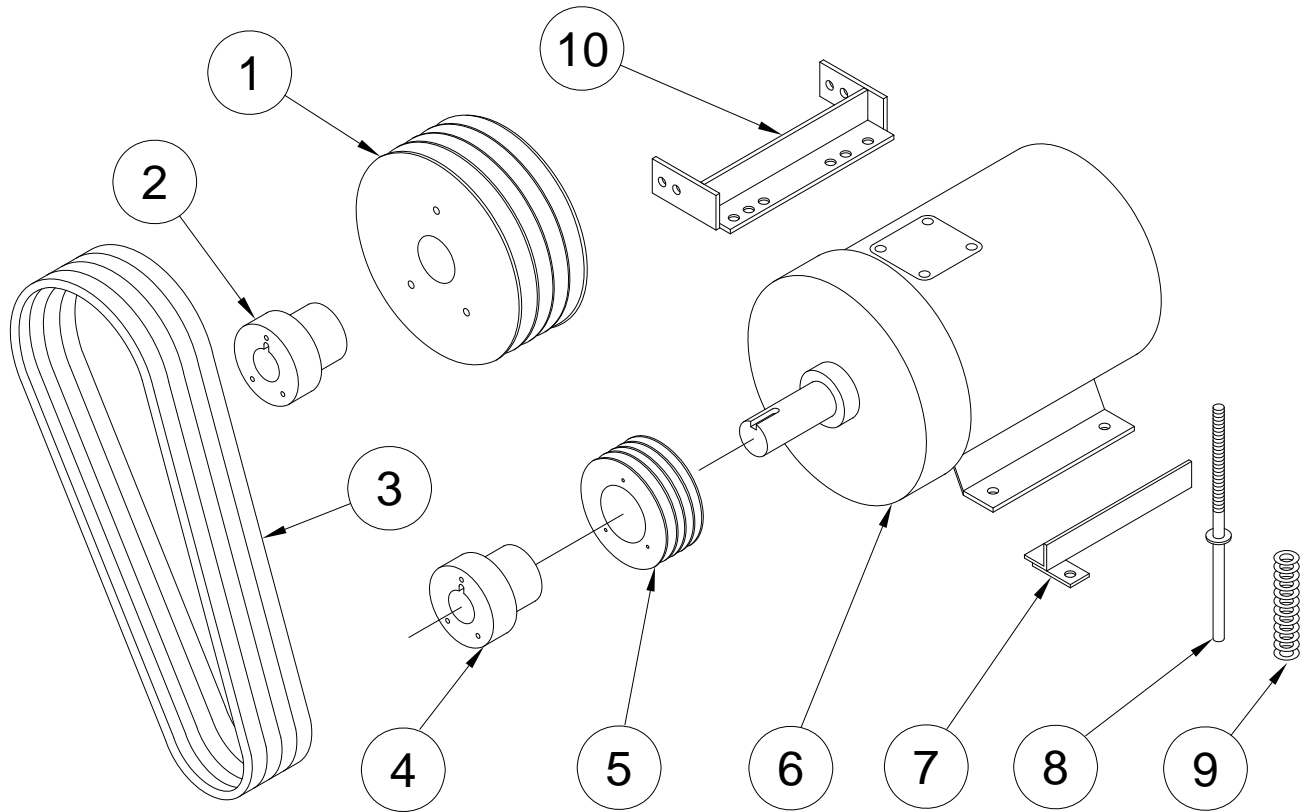
NO	PART#	DESCRIPTION	UOM
1	0059060	FEED SCREW CHUCK	1
*2	0090405	SEAL (LARGE)	1
3	0059157	SPACER	1
*4	0090303	THRUST BEARING	1
5	0059057	DRIVE SHAFT	1
6	0090607	WOODRUFF KEY	1
7	0059052	PINION & GEAR WHEEL	1
*8	0059061	GASKET	1
9	SHCS-23-08-SS	SOC. HD. CAP SCREW	1
*10	0090304	BALL BEARING	3
11	0090205	RETAINING RING	1
*12	0090404	SEAL (SMALL)	1
13	0059058	PLUG	1
14	HHCS-23-16-SS	HEX HD. CAP SCREW	5

ALL PARTS WITH * MAKE UP 0059050 REBUILD KIT

NO	PART#	DESCRIPTION	UOM
15	SLW-06-SS	LOCK WASHER	5
16	0059056	GEAR BOX COVER	1
17	0040012	GEAR HOUSING	1
18	0090613	PIPE PLUG	1
19	0059140	PIPE ASSEMBLY	1
20	0090610	BREATHER	1
21	0059050	REBUILD KIT*	

BUTCHER BOY A52 FLOOR GRINDER

DRIVE COMPONENTS



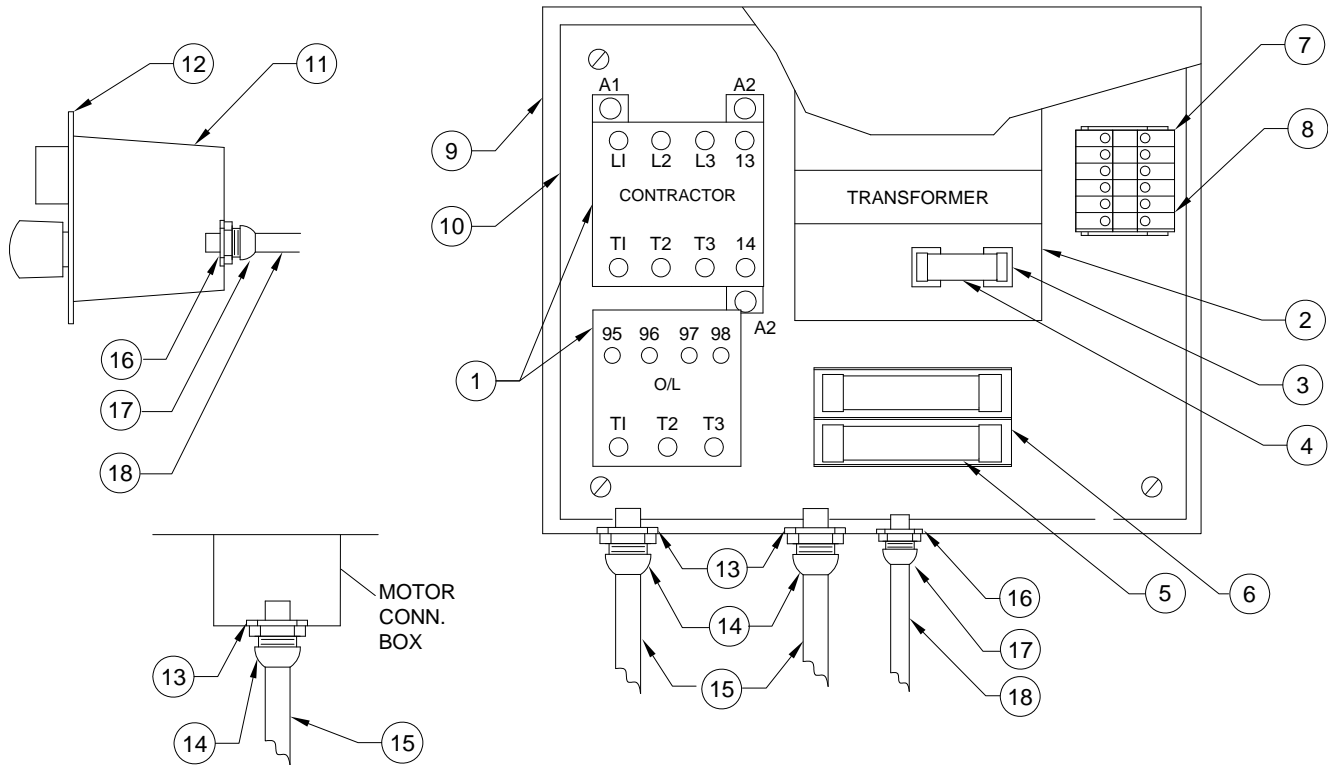
NO	PART#	DESCRIPTION	UOM
1	0090111	DRIVEN PULLEY 4GR 7.5 & 10HP	1
2	0090153	DRIVEN HUB	1
3	0090502	BELT	4
4	0090149	MOTOR HUB 7.5 HP & 10HP	1
5	0090108	MOTOR PULLEY 4GR 7.5 & 10HP	1
6	0092230	MOTOR 7.5HP, 3PH, 60Hz	1
6	0092257	MOTOR 10HP, 3PH, 60HZ	1
7	0059332S	SS TENSION ANGLE	1
8	0059342S	SS TENSION ROD	1
9	0059345	TENSION SPRING	1
10	0059340S	SS MOTOR MOUNT	1

BUTCHER BOY A52 FLOOR GRINDER

ELECTRICAL COMPONENTS

THIS PAGE FOR USE BY QUALIFIED REPAIR TECHNICIANS

ONLY 208/230 VOLTS 3 PHASE 60HZ



NO	PART#	DESCRIPTION	UOM
1	0093999-139	MOTOR STARTER	1
2	0093999-302	TRANSFORMER	1
3	0093999-096	CLIP-TRANSFORMER	1
4	0093999-018	FUSE	1
5	0093999-024	FUSE BLOCK	1
6	0093999-066	FUSE	2
7	0093999-069	GROUND TERMINAL	1
8	0093999-070	TERMINAL BLOCK	5
9	0093999-296	ENCLOSURE	1
10	0059394	MOUNTING PLATE	1
11	0093285	START STOP SWITCH	1
12	0040104	PUSH BUTTON PLATE	1
13	0095807	LOCK NUT	3
14	0095790	STRAIN RELIEF	3
15	0093999-236	CORD 10/4	1
16	0095767	LOCK NUT	2
17	0093999-132	STRAIN RELIEF	2
18	0093999-255	CORD 14/4	1

BUTCHER BOY A52 FLOOR CHOPPER

