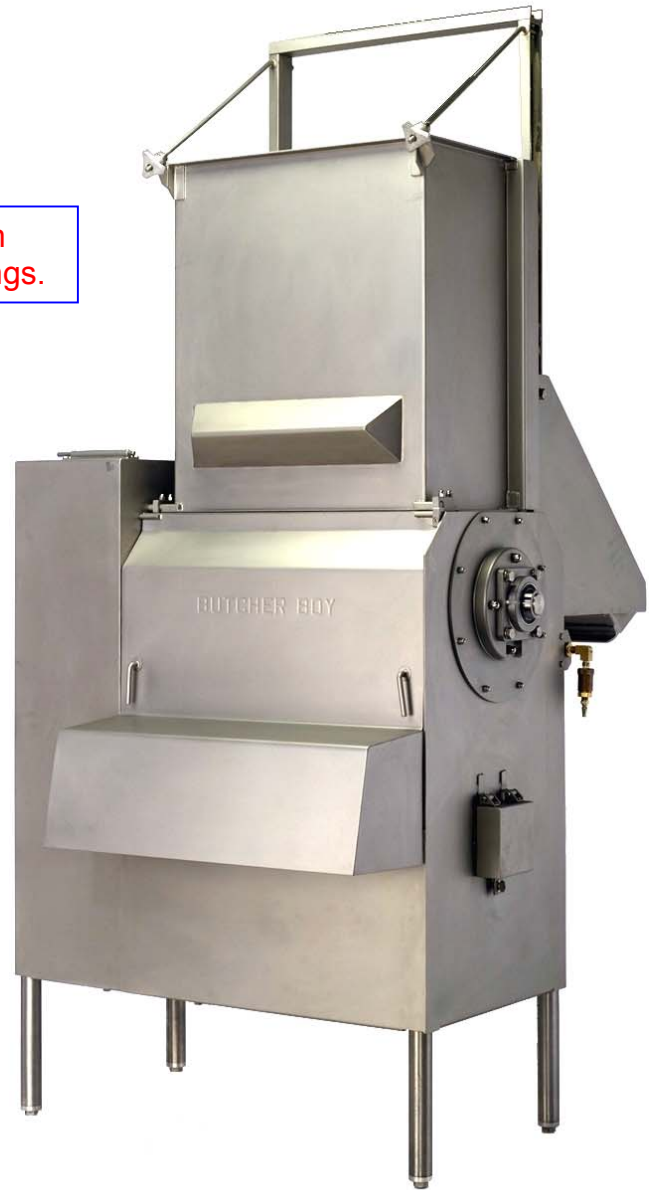


**B**<sup>®</sup>  
**U**  
**T**  
**C**  
**H**  
**E**  
**R**  
**B**  
**O**  
**Y**

**AU-MF STAINLESS STEEL FROZEN  
MEAT FLAKER**

**PARTS CATALOG  
S/N 99100015-ON**

**Stainless steel drum  
mounted on ball bearings.**



<sup>®</sup>

**MADE IN USA**

***"BUTCHER BOY"***

***QUALITY***

***DEPENDABILITY***

***SERVICE***



# BUTCHER BOY AUMF

**Before installing, operating or cleaning the AUMF all persons coming into contact with this equipment must read and completely understand the contents of this document.**

**If you have any doubts about the installation, operation or cleaning of this equipment contact the dealer from which the equipment was purchased or contact the factory.**

**THE BUTCHER BOY AUMF** is manufactured solely to flake product that has been properly tempered to a temperature of 24 to 32 degrees Fahrenheit.

UPON RECEIPT OF THE FLAKER: Thoroughly inspect the flaker for any damage, which may have occurred during transit. If damage is detected contact the carrier for instructions.

## A. INSTALLATION:

Unpack and place the flaker where it will be used.

Utilities required: Proper three phase power and 80–100 psi of clean, dry compressed air.

Make sure the flaker is configured as ordered.

Pay close attention that proper floor conditions, facilities for removal of runoff water from sanitation and sufficient access for sanitation and maintenance are present at the location.

Adjust the legs to desired working height. Level the flaker by using the adjustable feet at the end of the legs.

**Electrical connections must be made by a qualified electrician and comply with all codes.** Be sure of correct rotation (the teeth of the blade must move downward toward the loading tray).

**All covers must be in place when running the AUMF.**

## SAFETY FEATURES:

Electrical Lockout Switch: This switch provides a means to padlock the switch in the open position to ensure the power is disconnected from the flaker.

Air Lockout Switch: This switch provides a means to padlock the switch in the open position to ensure the power is disconnected from the flaker.

Hopper and Discharge Lower Door Switch: These switches prevent the flaker from starting with the doors open.

Brake motor: Stops drum from coasting.

Brake Release Door Switch: This switch prevents motor from starting with motor brake release cover open.

When the door is shut the door should push in the knob.

Brake Release Switch: Prevents motor from running with Knob in release position.

Belt Access Cover Switch: Prevents motor from running with cover removed.

## B. TO REMOVE/INSTALL THE BLADES:

### LOCKOUT THE ELECTRICAL POWER

Open the brake release door and pull the knob until it locks in the extended position. The drum may now be turned to remove the 8 blades. To install the blades, carefully inspect the blades and bolts for signs of fatigue. Place the blade in the blade pocket; be sure the blade sits flat against the drum. Install and tighten the two bolts securely but do not over tighten. Carefully rotate drum at least one revolution to check for any interference. Push in brake release, close and fasten brake release door.

## C. OPERATION OF AUMF:

**All covers must be in place when running the AUMF.**

Start machine by pushing the start button, place block of tempered product on loading chute. **BE SURE TO STAND CLEAR OF THE LOADING CHUTE AS THE CHUTE RAISES AND LOWERS.** Raise the chute by the air control valve, when the chute is inclined enough the product will fall into the drum hopper. Lower the loading chute and the product will be compressed into the drum causing very rapid flaking. When the first block is flaked the loading chute is at the loading position awaiting the next block. When all the blocks are flaked, stop the machine with the stop button.

## D. SANITATION:

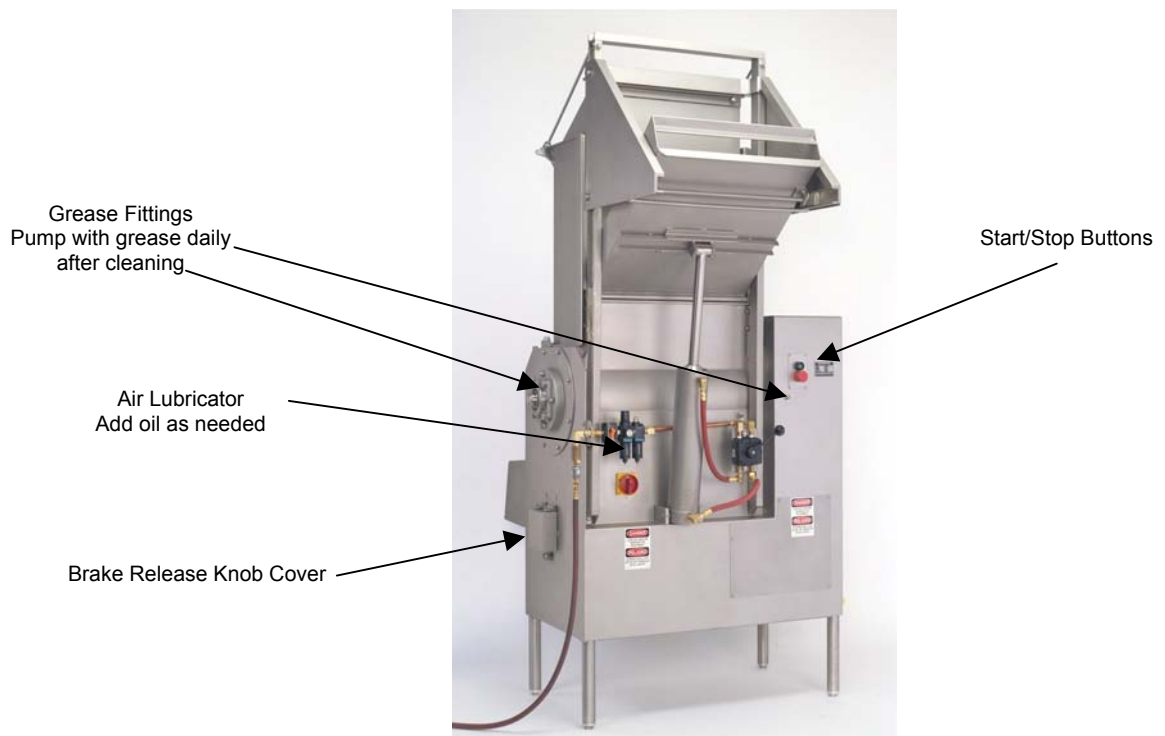
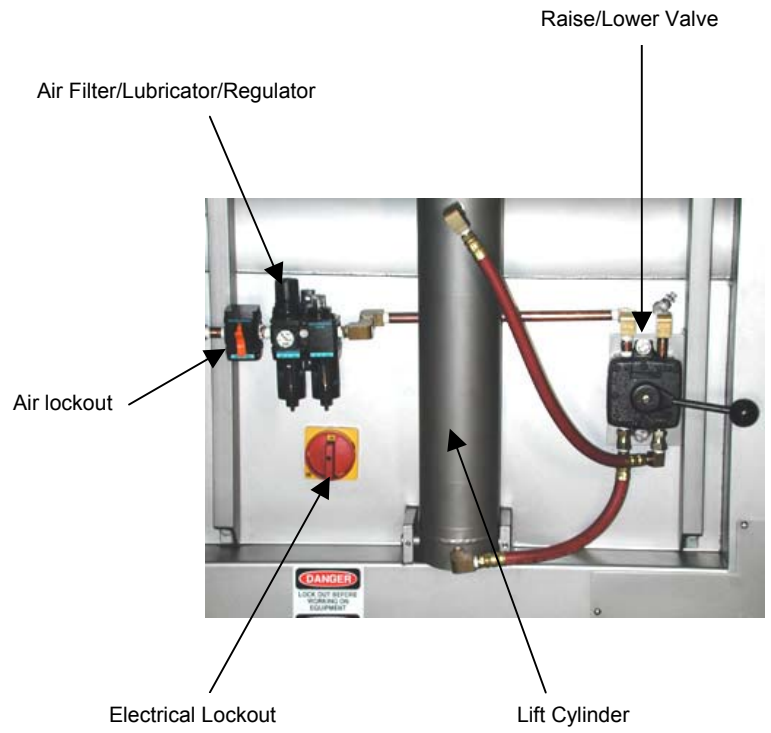
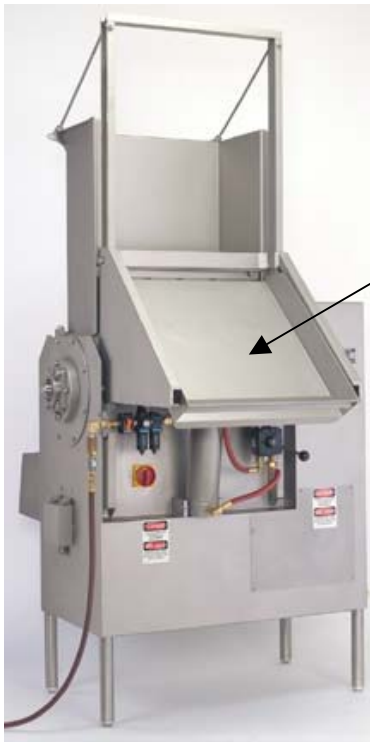
### LOCKOUT THE ELECTRICAL POWER

Open the front drum cover. Release motor brake. Remove the blades. The blades are sharp and should be hand cleaned and stored in approved oil until reinstalled.

Release the hopper and hinge it down to clean drum, run the loading chute up and down as needed to clean.

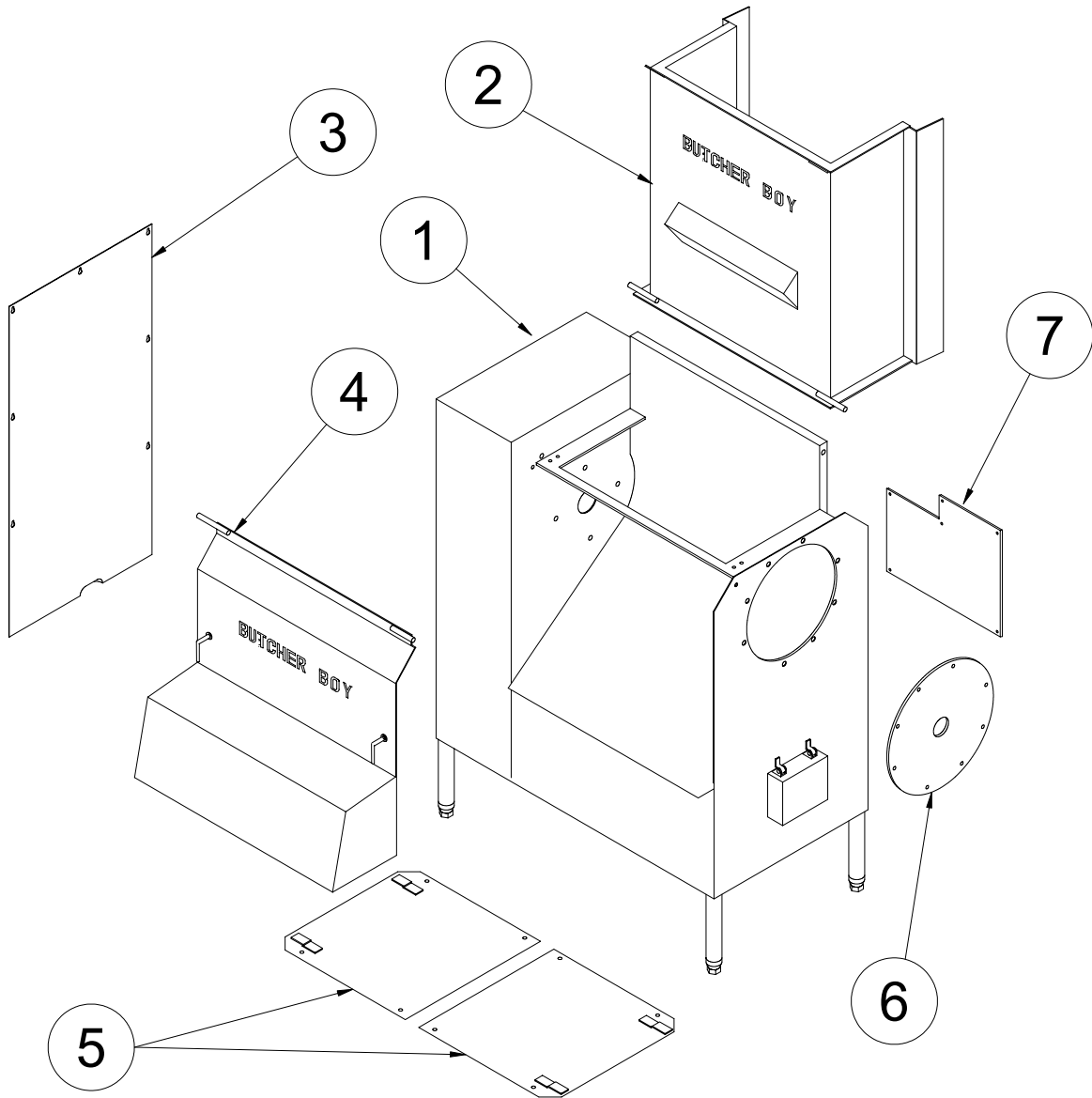
Spray the entire machine with approved sanitizer and oil.

# BUTCHER BOY AUMF



# BUTCHER BOY AUMF FLAKER STAINLESS STEEL

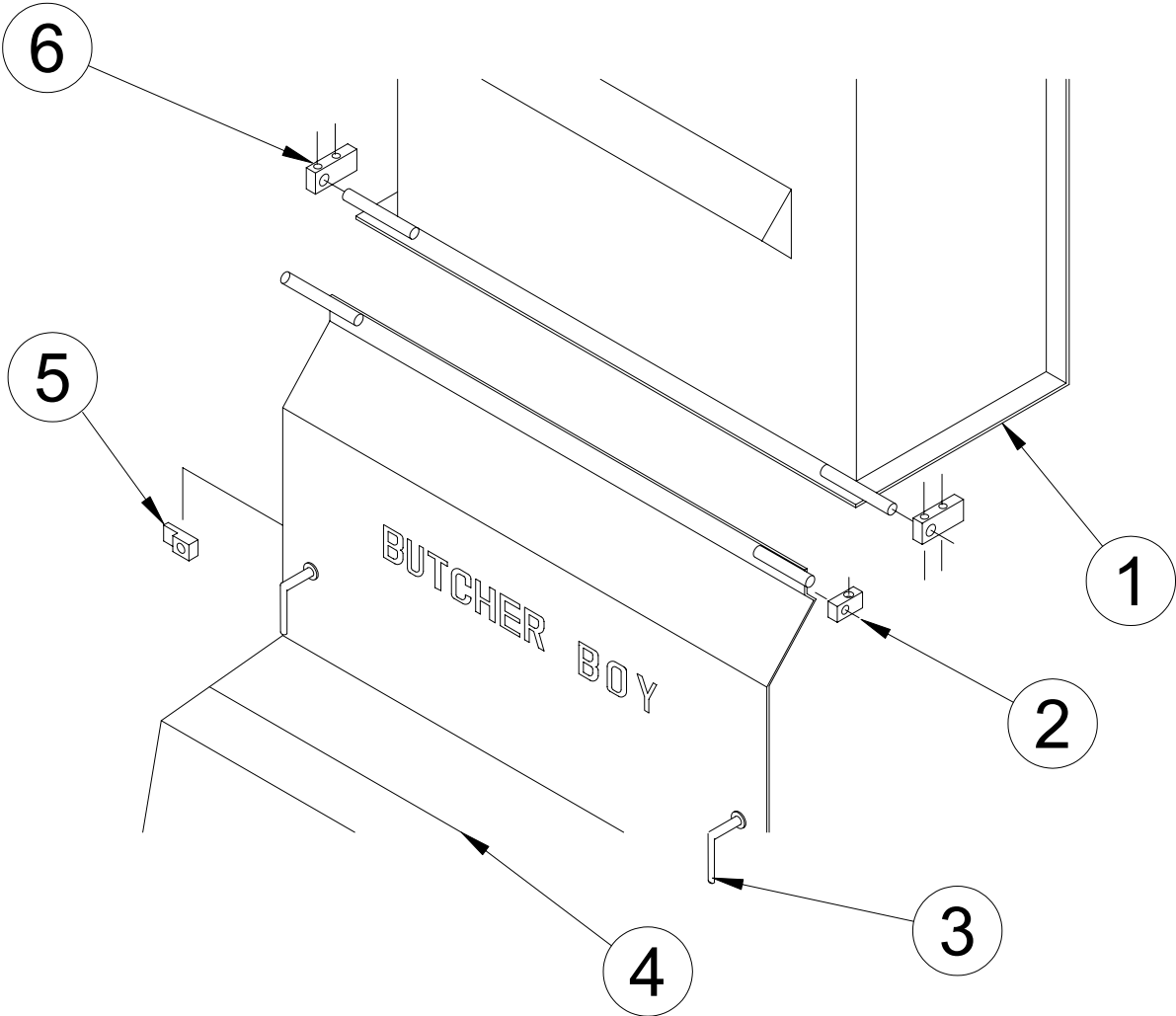
## HOPPER, DOOR & COVERS



ITEM #	PART #	DESCRIPTION	QTY.
1	0028410	CABINET-SS (FOR REF. ONLY)	1
2	0028685	HINGE HOPPER ASSY-SS	1
3	0028432	BELT COVER-SS	1
4	0028740	FRONT CHUTE DOOR-SS	1
5	0028575	BOTTOM COVER-SS	2
6	0028752	BEARING PLATE-SS	1
7	0028745	ELECTRICAL ACCESS PANEL-SS	1

# BUTCHER BOY AUMF FLAKER STAINLESS STEEL

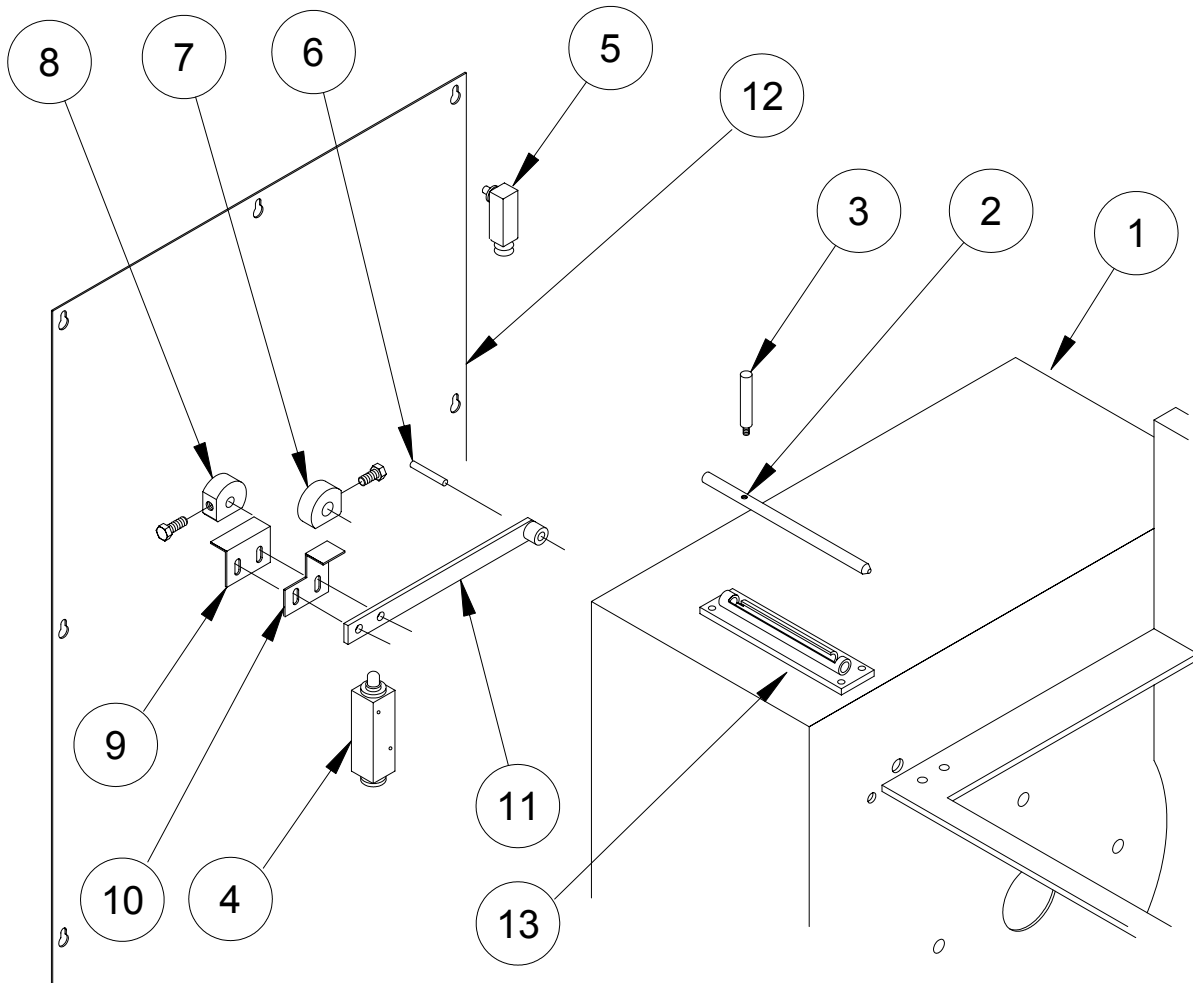
## HINGE HOPPER & FRONT DOOR ASSEMBLY



ITEM #	PART #	DESCRIPTION	QTY.
1	0028685	HINGE HOPPER ASSY-SS	1
2	0028482	HINGE BLOCK-DOOR-SS	1
3	0028505	DOOR HANDLE-SS	2
4	0028740	FRONT CHUTE-DOOR-SS	1
5	0028508	LOCK CATCH-DOOR-SS	2
6	0028647	HINGE BLOCK-HOPPER-SS	2

# BUTCHER BOY AUMF FLAKER STAINLESS STEEL

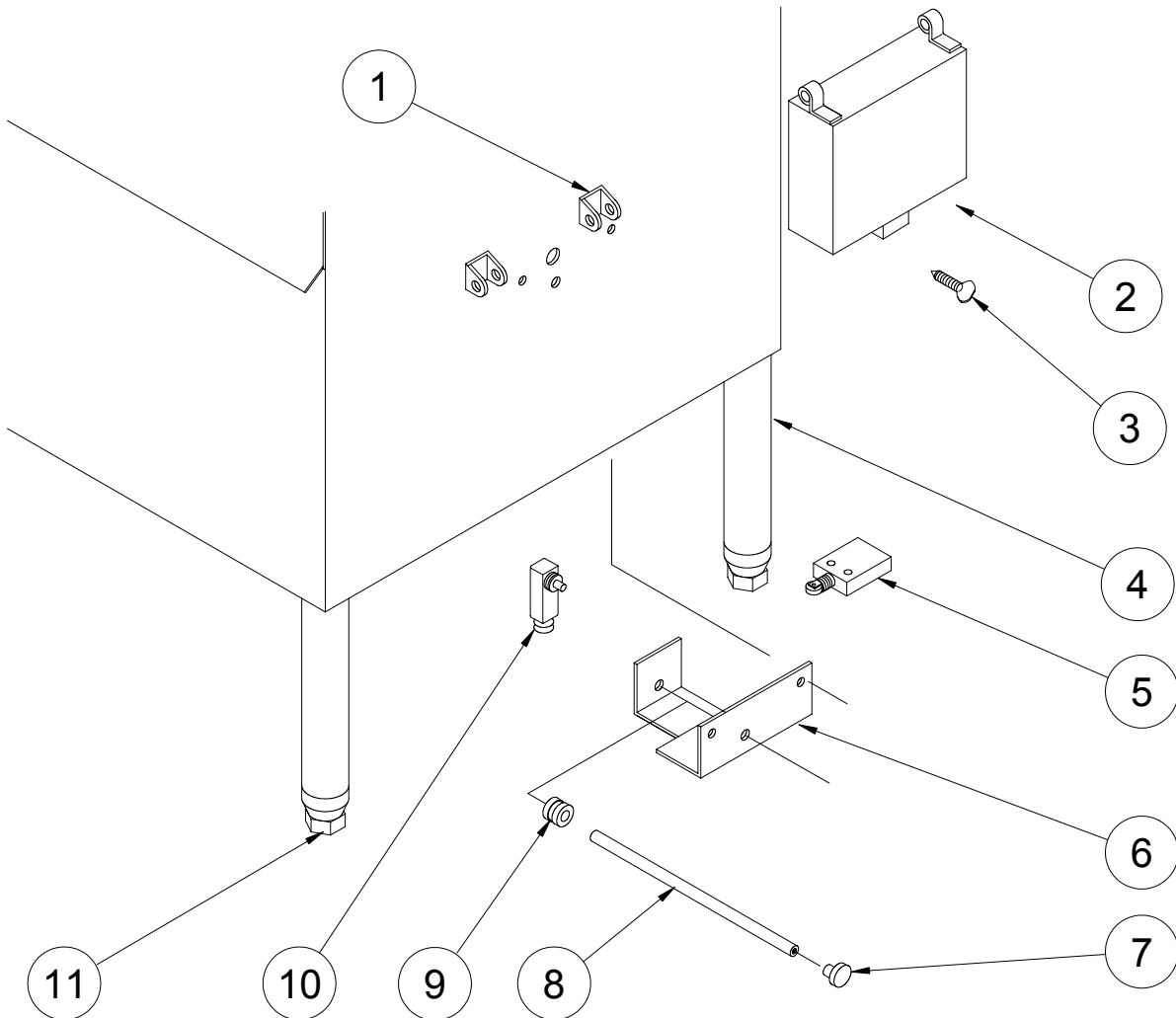
## SAFETY INTERLOCK FOR HOPPER & FRONT DOORS



ITEM #	PART #	DESCRIPTION	QTY.
1	0028410	CABINET ASSY-SS (REF ONLY)	1
2	0028723	SLIDE PIN	1
3	0028718	HANDLE-SLIDE PIN	1
4	<a href="#">0093271</a>	LIMIT SWITCH	1
5	0093855	LIMIT SWITCH	1
6	0028596S	SWITCH LEVER STUD	1
7	0028649	SWITCH CAM-HOPPER (1/2)	1
8	0028561	SWITCH CAM-DOOR (3/8)	1
9	0028560S	ANGLE-CAM-DOOR	1
10	0028559S	ANGLE-CAM-HOPPER	1
11	0028705S	SWITCH LEVER ASSEMBLY	1
12	0028432	BELT COVER-SS	1
13	0028720	LATCH	1

# BUTCHER BOY AUMF FLAKER STAINLESS STEEL

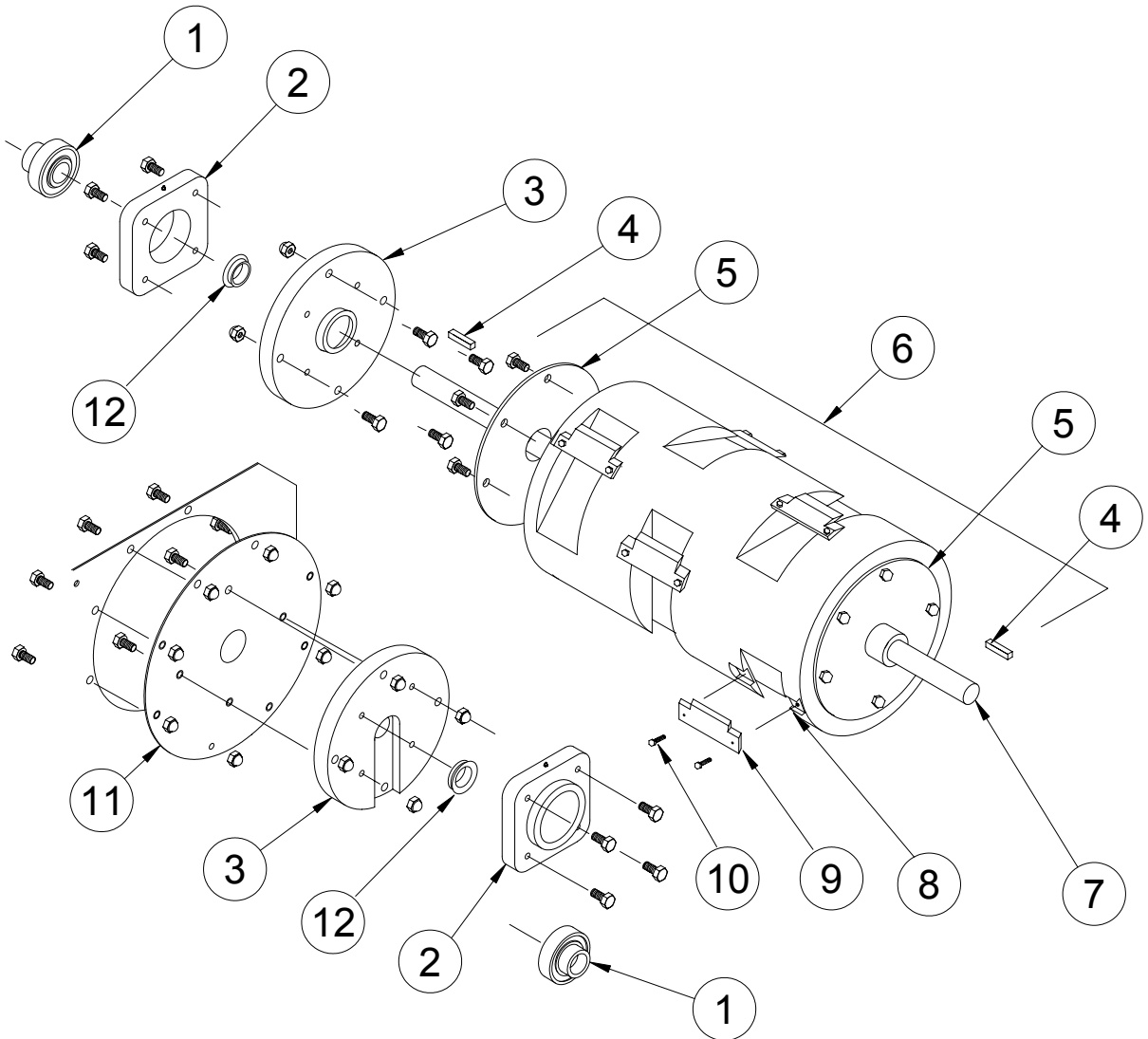
## RELEASE ASSEMBLY FOR BRAKE MOTOR



ITEM #	PART #	DESCRIPTION	QTY.
1	0010571	HINGE-SS	2
2	0028755	COVER-BRAKE HANDLE	1
3	0022085	THUMB SCREW	1
4	0028551	LEG ASSEMBLY-SS	4
5	0093999-141	LIMIT SWITCH (ROLLER)	2
6	0028735	BRACKET-BRAKE LEVER	1
7	0095317	KNOB	1
8	0028709	LEVER-BRAKE	1
9	0028734	COLLAR-BRAKE LEVER	1
10	0093855	LIMIT SWITCH-COVER	1
11	HHCS-34-56-SS	FOOT-SS	4

# BUTCHER BOY AUMF FLAKER STAINLESS STEEL

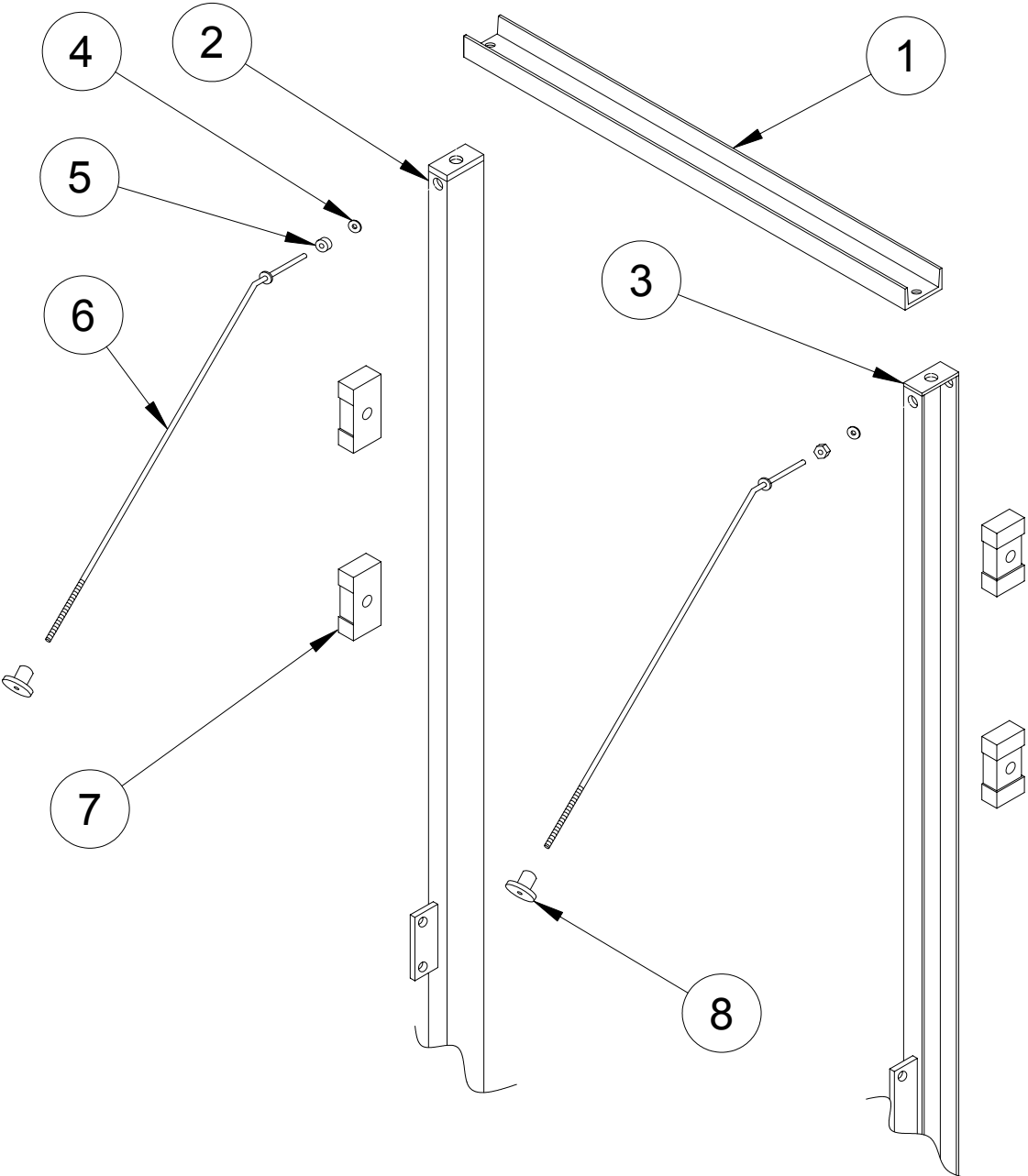
## AUMF FLAKER SS CUTTING DRUM ASSEMBLY AND ACCESSORYS



ITEM #	PART #	DESCRIPTION	QTY.
1	0090354	BEARING	2
2	0090353	HOUSING BEARING	2
3	0028751	BEARING MOUNT	2
4	0028202	KEY	3
5	0028235S	SS END PLATE-DRUM	2
6	0028201S	DRUM AND SHAFT ASSEMBLY	1
7	0028700S	SHAFT-SS	1
8	0028619	THREADED INSERT-DRUM	16
9	0028129	KNIFE	8
10	HHCS-21-16-SS	HEX BOLT-SS	16
11	0028752	BEARING PLATE-SS (CAB)	1
12	0090484	V-SEAL	2

# BUTCHER BOY AUMF FLAKER STAINLESS STEEL

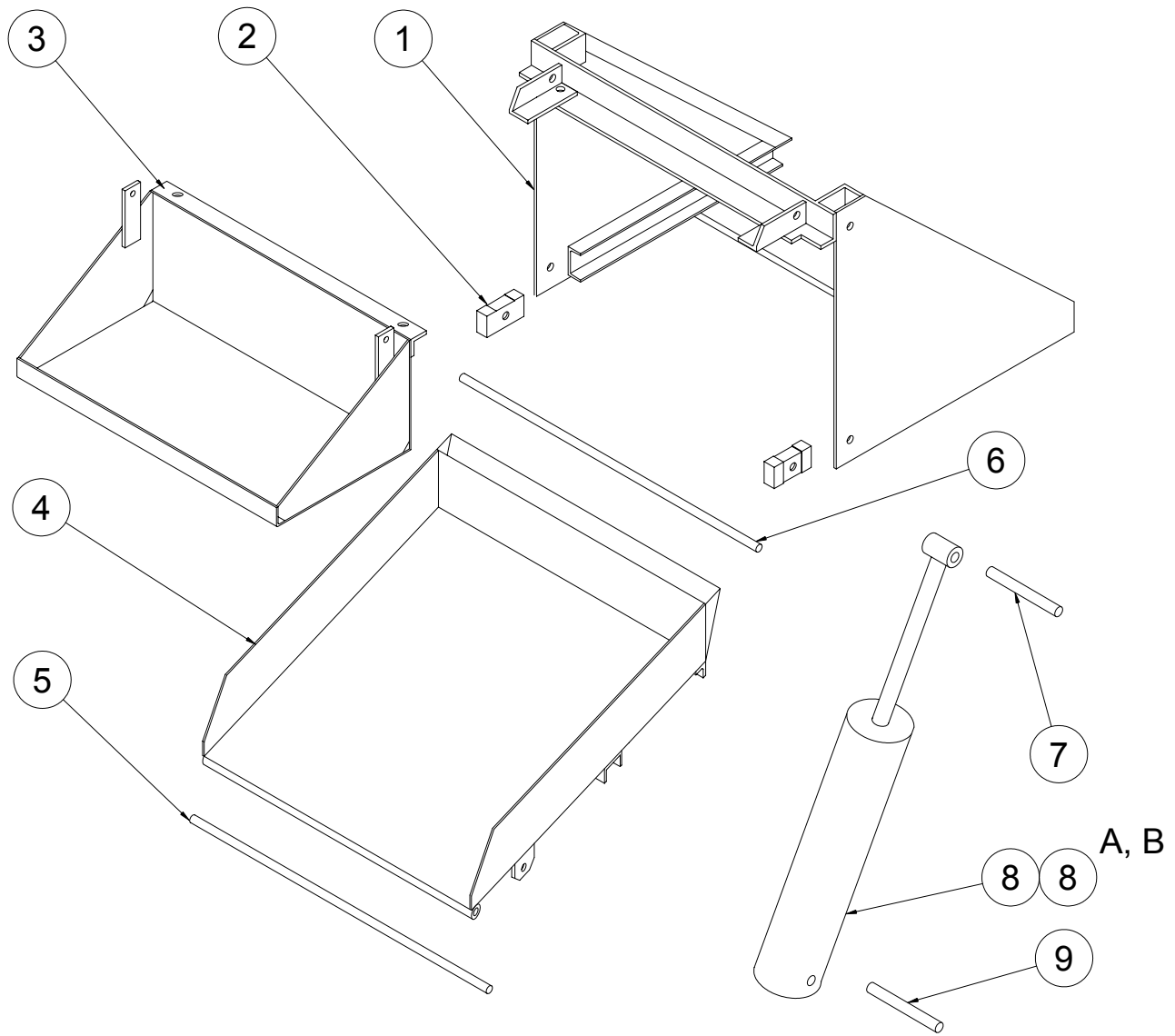
## UPPER GUIDE CHANNEL & SUPPORT



ITEM #	PART #	DESCRIPTION	QTY.
1	0028308S	UPPER GUIDE CHANNEL-SS	1
2	0028424S	GUIDE CHANNEL-REAR-SS	1
3	0028423S	GUIDE CHANNEL-FRONT-SS	1
4	0090602	RUBBER WASHER	2
5	0028603	COLLAR	2
6	0028669	TIE ROD-HOPPER-SS	2
7	0028147	SLIDE BLOCK	4
8	0010399	KNOB	2

# BUTCHER BOY AUMF FLAKER STAINLESS STEEL

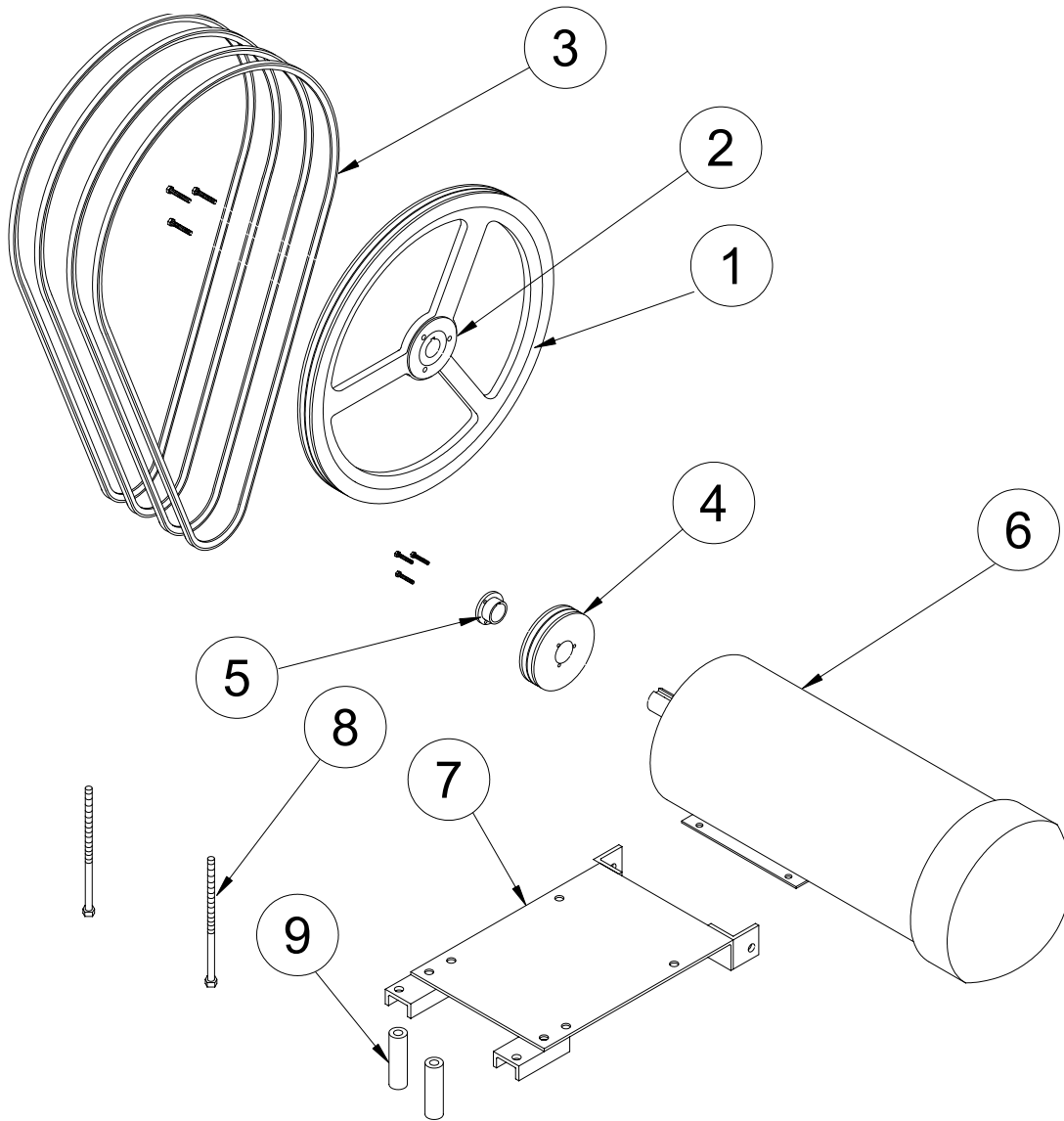
## LIFTING FRAME, HOPPER, & PRESSURE PLATE ASSY



ITEM #	PART #	DESCRIPTION	QTY.
1	0028435	LIFTING FRAME ASSEMBLY-SS	1
2	0028367	SLIDE BLOCK-LIFTING FRAME	2
3	0028676	PRESSURE PLATE ASSEMBLY-SS	1
4	<a href="#">0028448</a>	LIFTING HOPPER ASSEMBLY-SS	1
5	<a href="#">0028479</a>	PIVOT-LIFTING HOPPER-SS	1
6	0028604	PIVOT-SLIDE BLOCK-SS	1
7	<a href="#">0028529</a>	PIN-UPPER-CYLINDER-SS	1
8	<a href="#">0028227S</a>	AIR CYLINDER-SS	1
8	<a href="#">0028227S-1</a>	SEAL & BUSHING KIT, AIR CYLINDER-SS	1
9	0028528	PIN-LOWER-CYLINDER-SS	1

# BUTCHER BOY AUMF FLAKER STAINLESS STEEL

## BRAKE MOTOR & DRIVE COMPONENTS

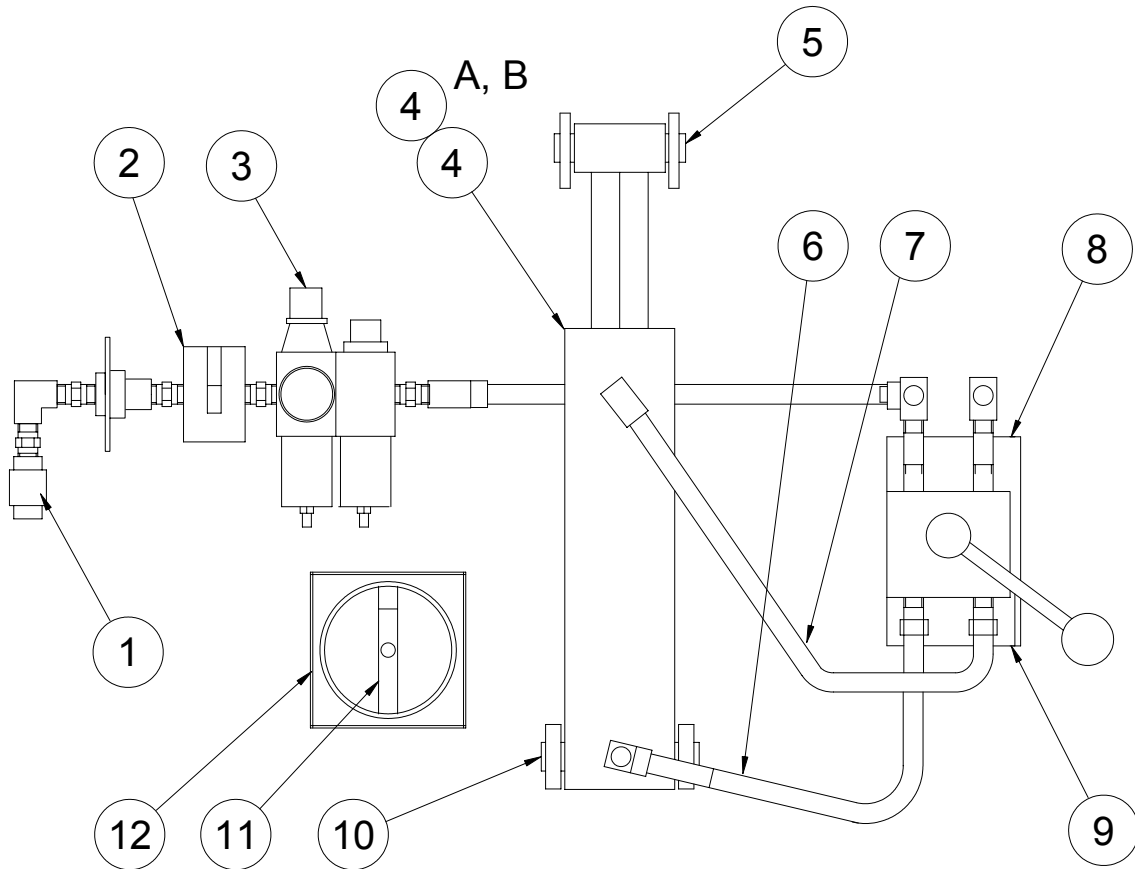


ITEM #	PART #	DESCRIPTION	QTY.
1	0090159	DRIVEN PULLEY	1
2	0090160	HUB-DRIVEN PULLEY	1
3	0090512	BELT	4
4	0090114	DRIVE PULLEY	1
5	0090149	HUB-DRIVE PULLEY	1
*6	0092259	BRAKE MOTOR-10hp	1
7	0028365S	MOTOR BASE-SS	1
8	0028689	MOTOR TENSION BOLT-SS	2

\* FOR PARTS ON BRAKE MOTOR CALL AMERICAN MEAT EQUIPMENT CORP. WITH SERIAL NUMBER ON BRAKE MOTOR.

# BUTCHER BOY AUMF FLAKER STAINLESS STEEL

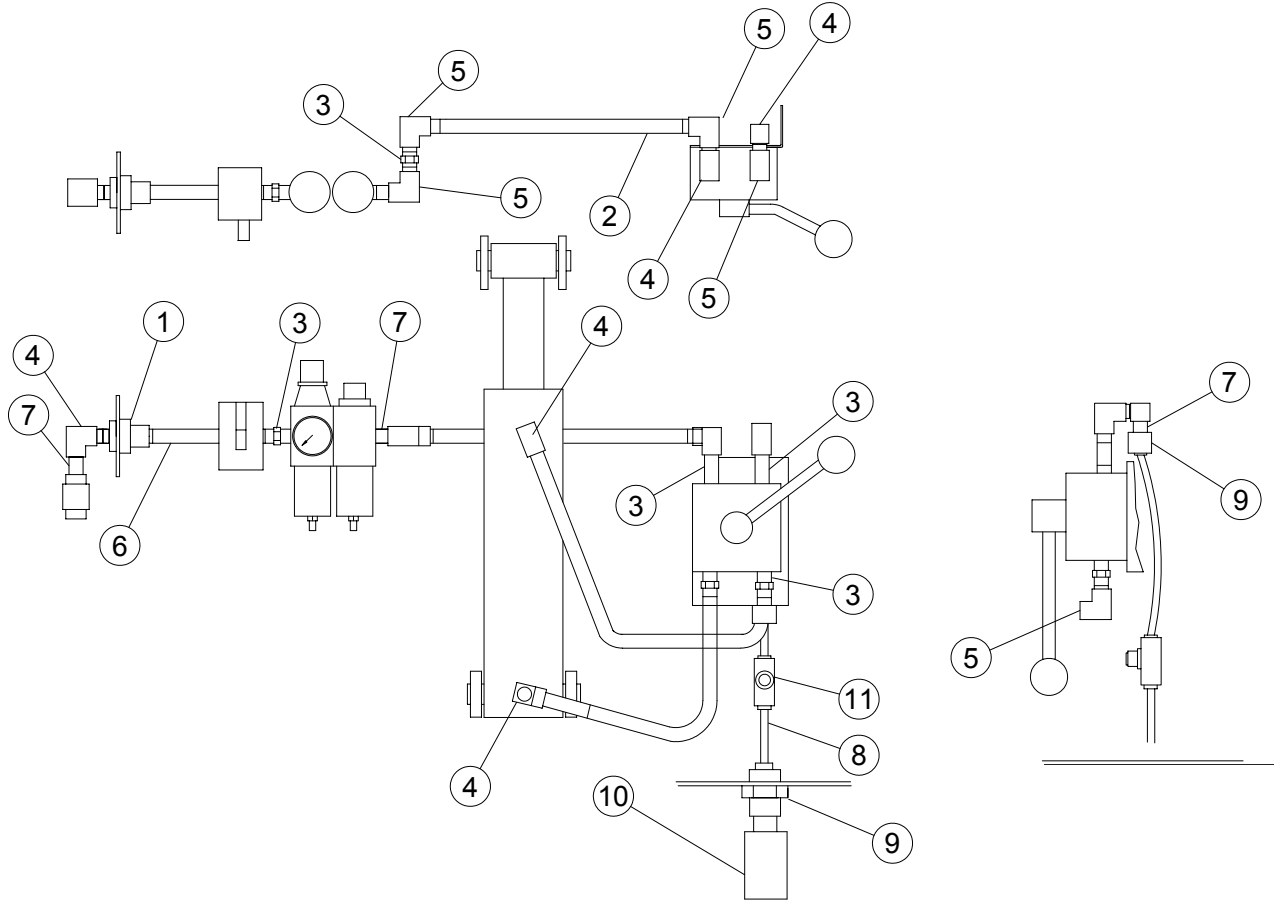
## AUMF PNEUMATICS



ITEM #	PART #	DESCRIPTION	QTY.
1	0095760	CHECK VALVE	1
2	0095759	SAFETY LOCKOUT VALVE-AIR	1
3	0095758	FILTER/REG/LUB. STACKED	1
4	<a href="#">0028227S</a>	AIR CYLINDERS-SS	1
4A	0028277S-1	SEAL & BUSHING KIT, AIR CYLINDERS-SS	1
5	<a href="#">0028529</a>	PIN-UPPER-CYLINDER-SS	1
6	0028380	AIR HOSE-OUTLET	1
7	0028381	AIR HOSE-INLET	1
8	<a href="#">0090690</a>	AIR CONTROL VALVE	1
9	0028333	BRACKET-SS	1
10	0028528	PIN-LOWER-CYLINDER-SS	1
11	<a href="#">0093999-055</a>	ACTUATOR	1
12	<a href="#">0093999-023</a>	DISCONNECT SWITCH	1

# BUTCHER BOY AUMF FLAKER STAINLESS STEEL

## AUMF PNEUMATICS FITTINGS

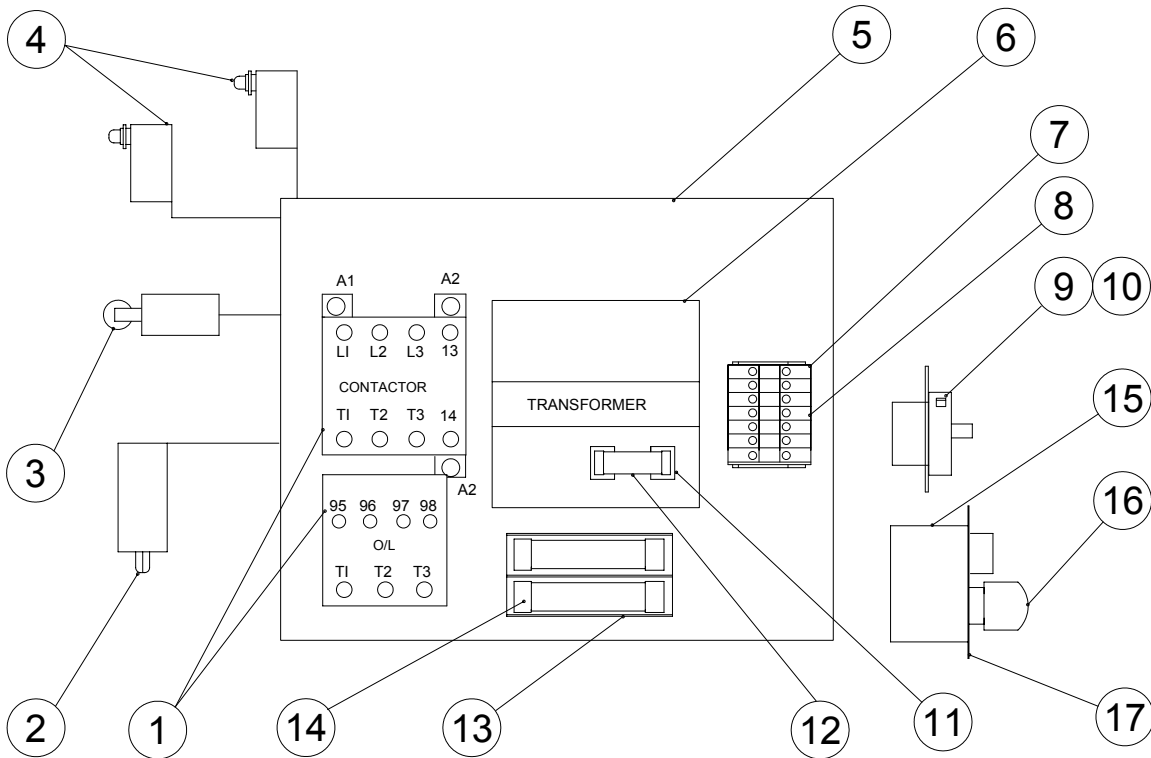


ITEM #	PART #	DESCRIPTION	QTY.
1	0095741	BRASS FITTING (1/4 PT BULKHEAD)	1
2	0095777	BRASS PIPE NIPPLE (1/4 PT X 10" LG)	1
3	0090687	BRASS HEX NIPPLE (1/4 PT X 1 1/2" LG)	5
4	0090635	BRASS ST. ELBOW (1/4 PT X 90°)	5
5	0090688	BRASS ELBOW (1/4 (F) X 1/4 (F) X 90°)	5
6	0095778	BRASS NIPPLE (1/4 PT X 3" LG)	1
7	0095779	BRASS NIPPLE (1/4 CLOSE)	2
8	0095780	TUBE (1/4 OD TUBE X 12")	1
9	0095781	BULKHEAD CONNECTOR (1/4 PT TO 1/4 OD)	2
10	0095782	FILTER	1
11	0095784	VALVE (1/4 OC TO 1/4 OD)	1

# BUTCHER BOY AUMF FLAKER STAINLESS STEEL

## AUMF ELECTRICAL COMPONENTS

THERE ARE NO USER SERVICABLE COMPONENTS IN THE ELECTRICAL ENCLOSURE. REFER ALL REPAIRS TO A QUALIFIED TECHNICIAN.

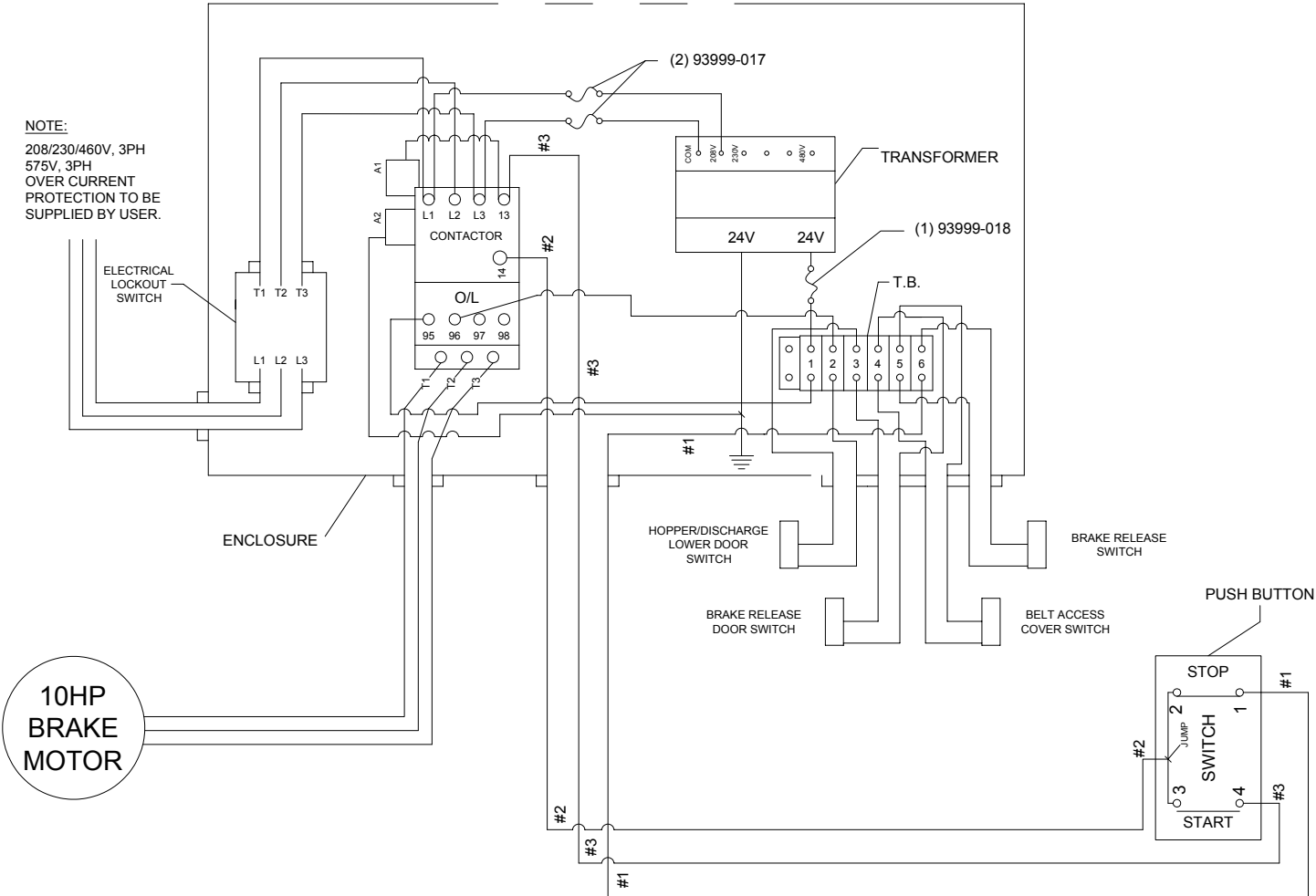


ITEM#	PART#	DESCRIPTION	QTY.
1	<a href="#">0093999-139</a>	CONTACT & O/L (230V)	1
	<a href="#">0093999-138</a>	CONTACT & O/L (460V)	1
2	<a href="#">0093271</a>	LIMIT SWITCH	1
3	<a href="#">0093999-140</a>	LIMIT SWITCH W/ROLLER	1
4	<a href="#">0093855</a>	LIMIT SWITCH PANEL MT.	2
5	<a href="#">0093999-052</a>	ENCLOSURE	1
6	<a href="#">0093999-226</a>	TRANSFORMER (208 & 230V)	1
	<a href="#">0093999-095</a>	TRANSFORMER (460V)	1
7	<a href="#">0093999-069</a>	GROUND TERMINAL	1
8	<a href="#">0093999-070</a>	TERMINAL BLOCK	6
9	<a href="#">0093999-023</a>	DISONNECT SWITCH	1
10	<a href="#">0093999-055</a>	ACTUATOR	1
11	<a href="#">0093999-096</a>	FUSE CLIP	1
12	<a href="#">0093999-018</a>	2.8A FUSE	1
13	<a href="#">0093999-024</a>	FUSE HOLDER (2)	1
14	<a href="#">0093999-017</a>	15/100A FUSE (460V)	2
	<a href="#">0093999-046</a>	6/10A FUSE (230V)	2
15	<a href="#">0093285</a>	START/STOP SWITCH ASSEMBLY	1
16	<a href="#">0093290</a>	STOP BUTTON	1
17	<a href="#">0040104</a>	SWITCH PLATE	1

# BUTCHER BOY AUMF FLAKER STAINLESS STEEL

## AUMF WIRING DIAGRAM POINT TO POINT

A QUALIFIED ELECTRICIAN SHOULD  
PERFORM ALL WIRING.



# BUTCHER BOY AUMF FLAKER STAINLESS STEEL

## AUMF WIRING DIAGRAM SCHEMATIC

A QUALIFIED ELECTRICIAN SHOULD PERFORM ALL WIRING.

