



Series e-60

In-Line Mounted Centrifugal Pumps

Maintenance Free

Replacement Parts



Bell & Gossett

a xylem brand

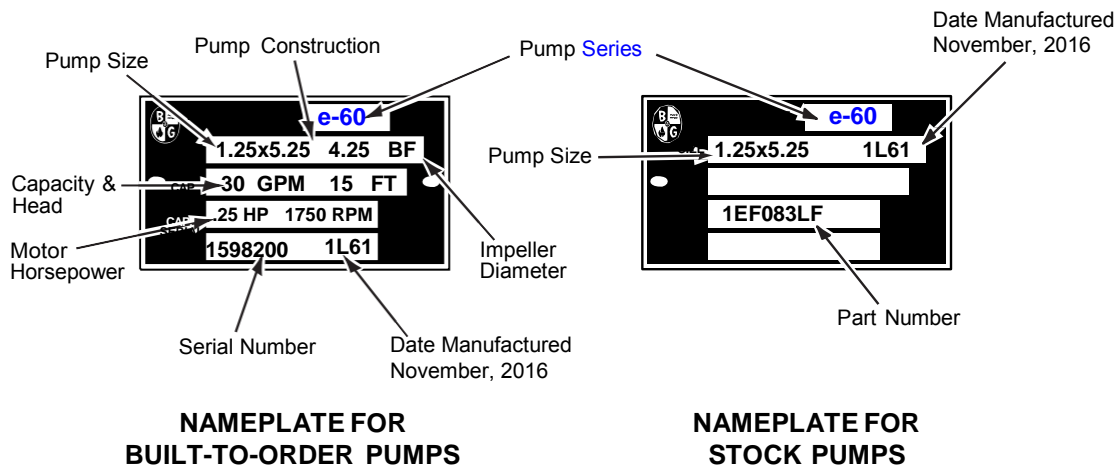


Index

| | |
|--|----|
| How to Use This Parts List..... | 3 |
| Exploded View – Series e-60 Maintenance Free Pump..... | 4 |
| Standard Stock Model Replacement Parts..... | 5 |
| Series e-60 1x1x5.25 Replacement Parts..... | 6 |
| Series e-60 1.25x1.25x5.25 Replacement Parts..... | 7 |
| Series e-60 1.5x1.5x5.25 Replacement Parts..... | 8 |
| Series e-60 1.5x1.5x6.25 Replacement Parts..... | 9 |
| Series e-60 1.5x1.5x7 Replacement Parts..... | 10 |
| Series e-60 2x2x5.25 Replacement Parts..... | 11 |
| Series e-60 2x2x6.25 Replacement Parts..... | 12 |
| Series e-60 2x2x7 Replacement Parts..... | 13 |
| Series e-60 3x3x5.25 Replacement Parts..... | 14 |
| Coupler Chart..... | 15 |

How to use this PARTS LIST

The pump nameplate identifies the pump by model number, pump construction and impeller diameter as shown below.

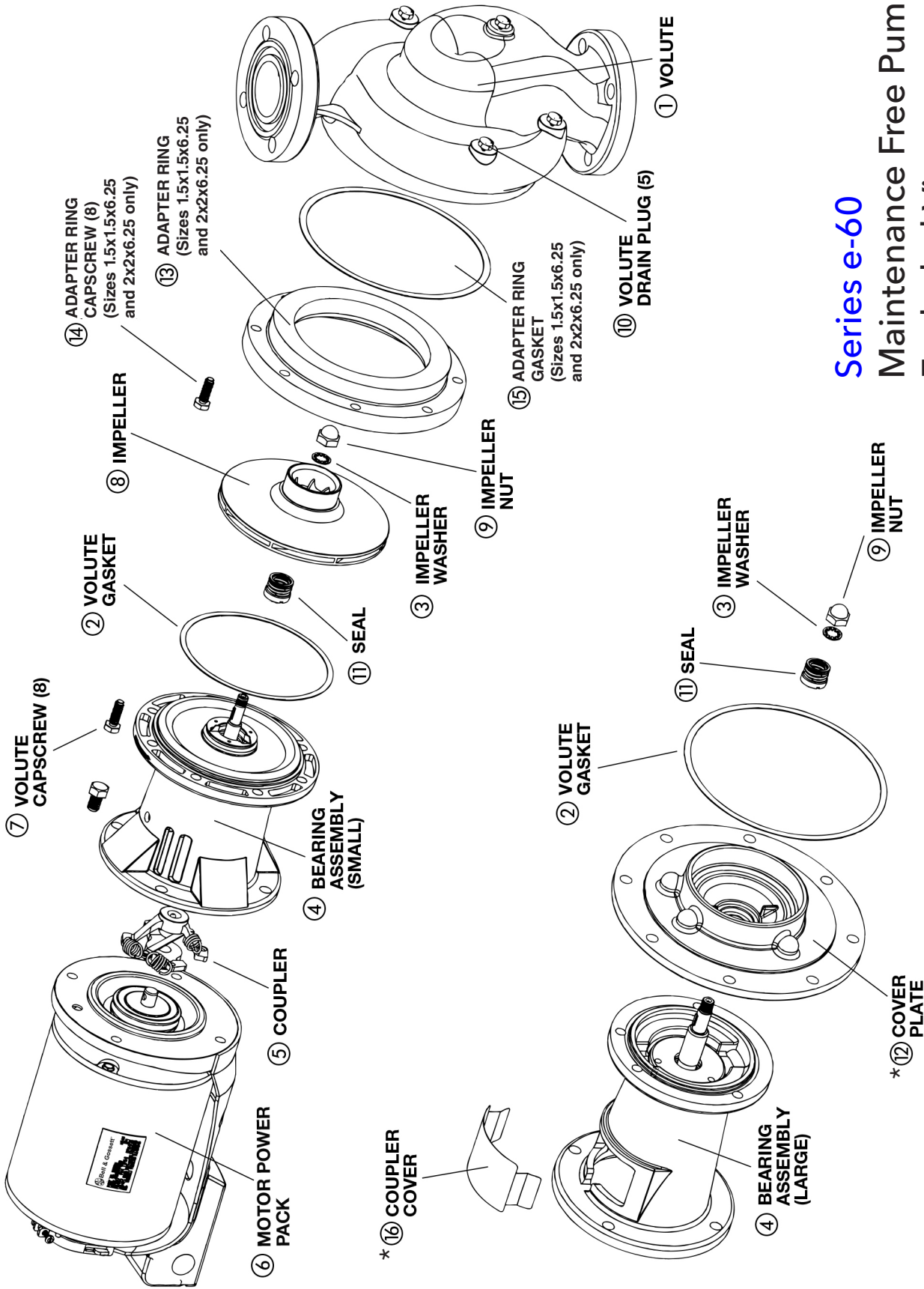


The BTO nameplate above identifies the pump as a **Series e-60**, size 1.25x5.25 with Bronze-Fitted (BF) construction. The impeller diameter is 4¹/₄" and the pump is sized to pump 30 GPM at 15 ft of head. The motor horsepower is 0.25 and the motor speed is 1750 RPM. The serial number uniquely identifies each individual BTO unit for future reference.

The Stock Pump nameplate identifies the pump as a **Series e-60**, size 1.25x5.25, with date code indicating it was built in November 2016. The part number can be used to provide all other pump information through a part number search.

DO NOT REMOVE THE NAMEPLATE. It is important when ordering replacement parts to furnish complete nameplate data. The following procedure will result in proper parts selection:

1. Using the nameplate, determine the model number, pump construction and impeller diameter.
2. Refer to the index of this document to find the parts breakdown for a specific pump model.
3. Find the column pertaining to the pump's specific materials of construction (Bronze-Fitted vs All Bronze)
4. Match the Item Number on the table to the numbered drawing on page 4 to help verify correct part number identification.



Series e-60
Maintenance Free Pump
Exploded View

*For 1.5x1.5x7 and 2x2x7 only.

STANDARD STOCK MODEL REPLACEMENT PARTS

| PUMP MODEL | PUMP SIZE | HORSEPOWER | (6) MOTOR | | (5) COUPLER | (4) BEARING† ASSEMBLY | IMPELLER DIAMETER | (8) IMPELLER |
|-----------------|----------------|------------|------------------------|------------------------|----------------|-----------------------------|-----------------------------------|-----------------|
| | | | 1 PHASE 115/208-230 | 3 PHASE 208-230/460 | | | | |
| e601S & e601T | 1x1x5.25 | 1/4 | 169224 | 169225 | 118473 | 186028LF | 4 ³ / ₈ " | P82878 |
| Be601S & Be601T | 1x1x5.25 | 1/4 | 169224 | 169225 | 118473 | 186028LF | 4 ³ / ₈ " | P82878 |
| e602S & e602T | 1x1x5.25 | 1/3 | 169226 | 169227 | 118473 | 186028LF | 4 ²⁷ / ₃₂ " | P82877 |
| Be602 & Be602T | 1x1x5.25 | 1/3 | 169226 | 169227 | 118473 | 186028LF | 4 ²⁷ / ₃₂ " | P82877 |
| e603S & e603T | 1x1x5.25 | 1/2 | 169228 | 169229 | 118473 | 186028LF | 5 ¹ / ₄ " | P58541 |
| Be603S & Be603T | 1x1x5.25 | 1/2 | 169228 | 169229 | 118473 | 186028LF | 5 ¹ / ₄ " | P58541 |
| e604S & e604T | 1.25x1.25x5.25 | 1/4 | 169224 | 169225 | 118473 | 186028LF | 4 ³ / ₈ " | P82878 |
| Be604S & Be604T | 1.25x1.25x5.25 | 1/4 | 169224 | 169225 | 118473 | 186028LF | 4 ³ / ₈ " | P82878 |
| e605S & e605T | 1.25x1.25x5.25 | 1/3 | 169226 | 169227 | 118473 | 186028LF | 4 ²⁷ / ₃₂ " | P82877 |
| Be605S & Be605T | 1.25x1.25x5.25 | 1/3 | 169226 | 169227 | 118473 | 186028LF | 4 ²⁷ / ₃₂ " | P82877 |
| e606S & e606T | 1.25x1.25x5.25 | 1/2 | 169228 | 169229 | 118473 | 186028LF | 5 ¹ / ₄ " | P58541 |
| Be606S & Be606T | 1.25x1.25x5.25 | 1/2 | 169228 | 169229 | 118473 | 186028LF | 5 ¹ / ₄ " | P58541 |
| e607S & e607T | 1.5x1.5x5.25 | 1/3 | 169226 | 169227 | 118473 | 186028LF | 4 ³ / ₈ " | P82881 |
| Be607S & Be607T | 1.5x1.5x5.25 | 1/3 | 169226 | 169227 | 118473 | 186028LF | 4 ³ / ₈ " | P82881 |
| e608S & e608T | 1.5x1.5x5.25 | 1/2 | 169228 | 169229 | 118473 | 186028LF | 4 ¹⁵ / ₁₆ " | P82880 |
| Be608S & Be608T | 1.5x1.5x5.25 | 1/2 | 169228 | 169229 | 118473 | 186028LF | 4 ¹⁵ / ₁₆ " | P82880 |
| e609S & e609T | 1.5x1.5x5.25 | 3/4 | 169230 | 169231 | 118473 | 186028LF | 5 ¹ / ₄ " | P58538 |
| Be609S & Be609T | 1.5x1.5x5.25 | 3/4 | 169230 | 169231 | 118473 | 186028LF | 5 ¹ / ₄ " | P58538 |
| e610S & e610T | 2x2x5.25 | 1/2 | 169228 | 169229 | 185329 | 186028LF | 4 ¹ / ₈ " | P82883 |
| Be610S & Be610T | 2x2x5.25 | 1/2 | 169228 | 169229 | 185329 | 186028LF | 4 ¹ / ₈ " | P82883 |
| e611S & e611T | 2x2x5.25 | 3/4 | 169230 | 169231 | 118473 | 186028LF | 4 ³ / ₄ " | P82882 |
| Be611S & Be611T | 2x2x5.25 | 3/4 | 169230 | 169231 | 118473 | 186028LF | 4 ³ / ₄ " | P82882 |
| e612S & e612T | 2x2x5.25 | 1 | 169232 | 169233 | 185329 | 186028LF | 5 ¹ / ₄ " | P58536 |
| Be612S & Be612T | 2x2x5.25 | 1 | 169232 | 169233 | 185329 | 186028LF | 5 ¹ / ₄ " | P58536 |
| e613S & e613T | 1.5x1.5x6.25 | 3/4 | 169230 | 169231 | 185329 | 186028LF* | 5 ³ / ₄ " | P82884 |
| e614S & e614T | 1.5x1.5x6.25 | 1 | 169232 | 169233 | 185329 | 186028LF* | 6 ¹ / ₄ " | P58564 |
| Be614S & Be614T | 1.5x1.5x6.25 | 1 | 169232 | 169233 | 185329 | 186028LF* | 6 ¹ / ₄ " | P58564 |
| e615S & e615T | 2x2x6.25 | 3/4 | 169230 | 169231 | 185329 | 186028LF* | 5 ⁵ / ₈ " | P82885 |
| Be615S & Be615T | 2x2x6.25 | 3/4 | 169230 | 169231 | 185329 | 186028LF* | 5 ⁵ / ₈ " | P82885 |
| e616S & e616T | 2x2x6.25 | 1 | 169232 | 169233 | 185329 | 186028LF* | 6 ⁷ / ₃₂ " | P58562 |
| e617S & e617T | 1.5x1.5x7 | 1.5 | 169236 | 169237 | 186003 | 186034LF | 6 ¹ / ₂ " | P57460 |
| e618T | 1.5x1.5x7 | 2 | NONE | 169238 | 186003 | 186034LF | 7" | P57440 |
| e619T | 2x2x7 | 2 | NONE | 169238 | 186003 | 186034LF | 6 ¹ / ₂ " | P82137 |
| e620T | 2x2x7 | 3 | NONE | 169234 | 185331 | 186034LF | 7" | P57580 |
| e621S & e621T | 1.5x1.5x6.25 | 1/2 | 169228 | 169229 | 118473 | 186028LF* | 4 ⁷ / ₈ " | P58661 |
| Be621S & Be621T | 1.5x1.5x6.25 | 1/2 | 169228 | 169229 | 118473 | 186028LF* | 4 ⁷ / ₈ " | P58661 |
| e622S & e622T | 1.5x1.5x7 | 3/4 | 169230 | 169231 | 186410 | 186034LF | 5 ¹ / ₂ " | P58662 |
| e623S & e623T | 1.5x1.5x7 | 1 | 169232 | 169233 | 185330 | 186034LF | 6" | P58663 |
| e624S & e624T | 2x2x7 | 1 | 169232 | 169233 | 185330 | 186034LF | 5 ¹¹ / ₁₆ " | P58664 |
| e625S & e625T | 2x2x7 | 1.5 | 169236 | 169237 | 186003 | 186034LF | 6 ¹ / ₈ " | P58665 |
| e626S & e626T | 3x3x5.25 | 3/4 | 169230 | 169231 | 185329 | 186028LF | 4 ³ / ₈ " | P83023 |
| Be626S & Be626T | 3x3x5.25 | 3/4 | 169230 | 169231 | 185329 | 186028LF | 4 ³ / ₈ " | P83023 |
| e627S & e627T | 3x3x5.25 | 1.5 | 169236 | 169237 | P75421 | 186028LF | 5 ¹ / ₄ " | P58636 |
| Be627S & Be627T | 3x3x5.25 | 1.5 | 169236 | 169237 | P75421 | 186028LF | 5 ¹ / ₄ " | P58636 |

*Adapter ring gasket P58542 must also be ordered when bearing assembly is replaced on all 6.25" pumps.

† With EPR/Carbon/SiC Std. Seal

— Factory recommended spare parts.

SERIES e-60 1x1x5.25

VOLUTES, IMPELLERS & FLANGES

| ITEM NO. | DESCRIPTION | BRONZE FITTED | ALL BRONZE |
|----------|-----------------------------|---------------|------------|
| 1 | Volute | 186386 | 186931LF |
| 10 | Volute Drain Plug (5 Req'd) | P39020 | P39470 |
| 7 | Volute Capscrew (8 Req'd) | P10620 | P10620 |
| 2 | Volute Gasket | P57410 | P57410 |
| 8 | Impeller (State Diameter) | P58541 | P58541 |
| | Impeller Key | P04940 | P04940 |
| 9 | Impeller Nut | P2000236 | P2000236 |
| 3 | Impeller Washer | P04660 | P04660 |
| | Flange (2 Req'd) | P01510 | P00794 |
| | Fastener Package | P64910 | P64910 |
| | Flange Gasket Set | 118368 | 118368 |

XL-11™ BEARING ASSEMBLIES (FOR BF OR AB PUMPS)

| ITEM NO. | DESCRIPTION | MODELS WITH COPPER SHAFT SLEEVE | | | MODELS WITH STAINLESS STEEL SHAFT SLEEVE | | |
|----------|--|---------------------------------|--------------------------------------|--------------------------------------|--|--------------------------------------|--------------------------------------|
| | | | | | | | |
| 4 | Bearing Assy. – Includes the Following: | 186028LF ¹ | 186029LF ² | 186030LF ³ | 186031LF ¹ | 186032LF ² | 186033LF ³ |
| 11 | Seal Kit No. <i>Seal Type</i> | 186046LF ¹ Std. | 186047LF ² <i>Opt.</i> | 186048LF ³ <i>Opt.</i> | 186046LF ¹ Std. | 186047LF ² <i>Opt.</i> | 186048LF ³ <i>Opt.</i> |
| | XL-11™ Small Bearing Frame Repair Kit* | 185335LF* | 185335LF* | 185335LF* | 185336* | 185336* | 185336* |
| 2 | Volute Gasket | P57410 | P57410 | P57410 | P57410 | P57410 | P57410 |

¹EPR/Carbon/SiC ²FKM/Carbon/SiC ³EPR/SiC/SiC

*Includes pre-assembled faceplate, nose cone, shaft and bearings. Wave spring and volute gasket are also supplied.

ITEM NO. 5 COUPLERS

See chart, p.15

ITEM NO. 6 POWER PACKS

| HP | 1 PHASE 115/208-230 | 3 PHASE 208-230/460 | RING MOUNTS |
|-----|------------------------|------------------------|----------------|
| 1/4 | 169224 | 169225 | 118228 |
| 1/3 | 169226 | 169227 | 118228 |
| 1/2 | 169228 | 169229 | 118228 |
| 3/4 | 169230 | 169231 | 118228 |

– Factory recommended spare parts.

SERIES e-60 1.25x1.25x5.25

VOLUTES, IMPELLERS & FLANGES

| ITEM NO. | DESCRIPTION | BRONZE FITTED | ALL BRONZE |
|----------|-----------------------------|---------------|------------|
| 1 | Volute | 186386 | 186931LF |
| 10 | Volute Drain Plug (5 Req'd) | P39020 | P39470 |
| 7 | Volute Capscrew (8 Req'd) | P10620 | P10620 |
| 2 | Volute Gasket | P57410 | P57410 |
| 8 | Impeller (State Diameter) | P58541 | P58541 |
| | Impeller Key | P04940 | P04940 |
| 9 | Impeller Nut | P2000236 | P2000236 |
| 3 | Impeller Washer | P04660 | P04660 |
| | Flange (2 Req'd) | P03250 | P03251 |
| | Fastener Package | P64910 | P64910 |
| | Flange Gasket Set | 118368 | 118368 |

XL-11™ BEARING ASSEMBLIES (FOR BF OR AB PUMPS)

| ITEM NO. | DESCRIPTION | MODELS WITH COPPER SHAFT SLEEVE | | | MODELS WITH STAINLESS STEEL SHAFT SLEEVE | | |
|----------|--|---------------------------------|-------------------------------|-------------------------------|--|-------------------------------|-------------------------------|
| | | | | | | | |
| 4 | Bearing Assy. – Includes the Following: | 186028LF ¹ | 186029LF ² | 186030LF ³ | 186031LF ¹ | 186032LF ² | 186033LF ³ |
| 11 | Seal Kit No. <i>Seal Type</i> | 186046LF ¹ Std. | 186047LF ² Opt. | 186048LF ³ Opt. | 186046LF ¹ Std. | 186047LF ² Opt. | 186048LF ³ Opt. |
| | XL-11™ Small Bearing Frame Repair Kit* | 185335LF* | 185335LF* | 185335LF* | 185336* | 185336* | 185336* |
| 2 | Volute Gasket | P57410 | P57410 | P57410 | P57410 | P57410 | P57410 |

¹EPR/Carbon/SiC²FKM/Carbon/SiC³EPR/SiC/SiC

*Includes pre-assembled faceplate, nose cone, shaft and bearings. Wave spring and volute gasket are also supplied.

ITEM NO. 5 COUPLERS

See chart, p.15

ITEM NO. 6 POWER PACKS

| HP | 1 PHASE 115/208-230 | 3 PHASE 208-230/460 | RING MOUNTS |
|-----|------------------------|------------------------|----------------|
| 1/4 | 169224 | 169225 | 118228 |
| 1/3 | 169226 | 169227 | 118228 |
| 1/2 | 169228 | 169229 | 118228 |
| 3/4 | 169230 | 169231 | 118228 |

 – Factory recommended spare parts.

SERIES e-60 1.5x1.5x5.25

VOLUTES, IMPELLERS & FLANGES

| ITEM NO. | DESCRIPTION | BRONZE FITTED | ALL BRONZE |
|----------|-----------------------------|---------------|------------|
| 1 | Volute | 186389 | 186932LF |
| 10 | Volute Drain Plug (5 Req'd) | P39020 | P39470 |
| 7 | Volute Capscrew (8 Req'd) | P10620 | P10620 |
| 2 | Volute Gasket | P57410 | P57410 |
| 8 | Impeller (State Diameter) | P58538 | P58538 |
| | Impeller Key | P04940 | P04940 |
| 9 | Impeller Nut | P2000236 | P2000236 |
| 3 | Impeller Washer | P04660 | P04660 |
| | Flange (2 Req'd) | P03410 | P2000090 |
| | Fastener Package | P64940 | P64930 |
| | Flange Gasket Set | 118373 | 118373 |

XL-11™ BEARING ASSEMBLIES (FOR BF OR AB PUMPS)

| ITEM NO. | DESCRIPTION | MODELS WITH COPPER SHAFT SLEEVE | | | MODELS WITH STAINLESS STEEL SHAFT SLEEVE | | |
|----------|---|---------------------------------|-------------------------------|-------------------------------|--|-------------------------------|-------------------------------|
| | | | | | | | |
| 4 | Bearing Assy. – Includes the Following: | 186028LF ¹ | 186029LF ² | 186030LF ³ | 186031LF ¹ | 186032LF ² | 186033LF ³ |
| 11 | Seal Kit No. <i>Seal Type</i> | 186046LF ¹ Std. | 186047LF ² Opt. | 186048LF ³ Opt. | 186046LF ¹ Std. | 186047LF ² Opt. | 186048LF ³ Opt. |
| | XL-11™ Small Bearing Frame Repair Kit* | 185335LF* | 185335LF* | 185335LF* | 185336 | 185336 | 185336 |
| 2 | Volute Gasket | P57410 | P57410 | P57410 | P57410 | P57410 | P57410 |

¹EPR/Carbon/SiC ²FKM/Carbon/SiC ³EPR/SiC/SiC

*Includes pre-assembled faceplate, nose cone, shaft and bearings. Wave spring and volute gasket are also supplied.

ITEM NO. 5 COUPLERS

See chart, p.15

ITEM NO. 6 POWER PACKS

| HP | 1 PHASE 115/208-230 | 3 PHASE 208-230/460 | RING MOUNTS |
|-----|------------------------|------------------------|----------------|
| 1/4 | 169224 | 169225 | 118228 |
| 1/3 | 169226 | 169227 | 118228 |
| 1/2 | 169228 | 169229 | 118228 |
| 3/4 | 169230 | 169231 | 118228 |

– Factory recommended spare parts.

SERIES e-60 1.5x1.5x6.25

VOLUTES, IMPELLERS & FLANGES

| ITEM NO. | DESCRIPTION | BRONZE FITTED | ALL BRONZE |
|----------|---------------------------------|---------------|------------|
| 1 | Volute | 186935 | 186671LF |
| 10 | Volute Drain Plug (5 Req'd) | P39020 | P39470 |
| 7 | Volute Capscrew (8 Req'd) | P10620 | P01850 |
| 2 | Volute Gasket | P57410 | P57410 |
| 13 | Adapter Ring | P58576 | P58578 |
| 14 | Adapter Ring Capscrew (8 Req'd) | DJ0034 | P01850 |
| 15 | Adapter Ring Gasket | P58542 | P58542 |
| 8 | Impeller (State Diameter) | P58564 | P58564 |
| | Impeller Key | P04940 | P04940 |
| 9 | Impeller Nut | P2000236 | P2000236 |
| 3 | Impeller Washer | P04660 | P04660 |
| | Flange (2 Req'd) | P03410 | P2000090 |
| | Fastener Package | P64940 | P64930 |
| | Flange Gasket Set | 118373 | 118373 |
| | Motor Ring Adapter | P76944 | P76944 |

XL-11™ BEARING ASSEMBLIES (FOR BF OR AB PUMPS)

| ITEM NO. | DESCRIPTION | MODELS WITH COPPER SHAFT SLEEVE | | | MODELS WITH STAINLESS STEEL SHAFT SLEEVE | | |
|----------|---|---------------------------------|----------------------------|----------------------------|--|----------------------------|----------------------------|
| | | | | | | | |
| 4 | Bearing Assy. – Includes the Following: | **186028LF ¹ | **186029LF ² | **186030LF ³ | **186031LF ¹ | **186032LF ² | **186033LF ³ |
| 11 | Seal Kit No. <i>Seal Type</i> | 186046LF ¹ Std. | 186047LF ² Opt. | 186048LF ³ Opt. | 186046LF ¹ Std. | 186047LF ² Opt. | 186048LF ³ Opt. |
| | XL-11™ Small Bearing Frame Repair Kit* | 185335LF* | 185335LF* | 185335LF* | 185336* | 185336* | 185336* |
| 2 | Volute Gasket | P57410 | P57410 | P57410 | P57410 | P57410 | P57410 |

¹EPR/Carbon/SiC ²FKM/Carbon/SiC ³EPR/SiC/SiC

*Includes pre-assembled faceplate, nose cone, shaft and bearings. Wave spring and volute gasket are also supplied.

**Adapter Ring Gasket P58542 must also be ordered when bearing assembly is replaced on all 6.25" pumps.

ITEM NO. 5 COUPLERS

See chart, p.15

ITEM NO. 6 POWER PACKS

| HP | 1 PHASE 115/208-230 | 3 PHASE 208-230/460 | RING MOUNTS |
|-----|------------------------|------------------------|-------------|
| 1/2 | 169228 | 169229 | 118228 |
| 3/4 | 169230 | 169231 | 118228 |
| 1 | 169232 | 169233 | 118848 |
| 1.5 | 169236 | 169237 | NONE |

– Factory recommended spare parts.

SERIES e-60 1.5x1.5x7

VOLUTES, IMPELLERS & FLANGES

| ITEM NO. | DESCRIPTION | BRONZE FITTED | ALL BRONZE |
|----------|-----------------------------|---------------|------------|
| 1 | Volute | 186390 | 186934LF |
| 10 | Volute Drain Plug (5 Req'd) | P39020 | P39470 |
| 7 | Volute Capscrew (8 Req'd) | P40020 | P52310 |
| 2 | Volute Gasket | P57700 | P57700 |
| 8 | Impeller (State Diameter) | P57440 | P57440 |
| | Impeller Key | P49358 | P49358 |
| 9 | Impeller Nut | P2000220 | P2000220 |
| 3 | Impeller Washer | P11220 | P11220 |
| | Flange (2 Req'd) | P03410 | P2000090 |
| | Fastener Package | P64940 | P64930 |
| | Flange Gasket Set | 118373 | 118373 |

XL-11™ BEARING ASSEMBLIES

FOR BRONZE FITTED (BF) PUMPS

| ITEM NO. | DESCRIPTION | MODELS WITH COPPER SHAFT SLEEVE | | | MODELS WITH STAINLESS STEEL SHAFT SLEEVE | | |
|----------|---|--------------------------------------|--------------------------------------|--------------------------------------|--|--------------------------------------|--------------------------------------|
| | | | | | | | |
| 4 | Bearing Assy. – Includes the following: | 186034LF ¹ | 186036LF ² | 186035LF ³ | 186037LF ¹ | 186039LF ² | 186038LF ³ |
| 11 | Seal Kit No. <i>Seal Type</i> | 186049LF ¹ <i>Std.</i> | 186050LF ² <i>Opt.</i> | 186051LF ³ <i>Opt.</i> | 186049LF ¹ <i>Std.</i> | 186050LF ² <i>Opt.</i> | 186051LF ³ <i>Opt.</i> |
| | XL-11™ Lrg. Bearing Frame Repair Kit* | 185337LF* | 185337LF* | 185337LF* | 185338* | 185338* | 185338* |
| 2 | Volute Gasket | P57700 | P57700 | P57700 | P57700 | P57700 | P57700 |
| 12 | Cover Plate | P57246 | P57246 | P57246 | P57246 | P57246 | P57246 |
| 16 | Coupler Cover | P03982 | P03982 | P03982 | P03982 | P03982 | P03982 |

FOR ALL BRONZE (AB) PUMPS

| | | | | | | | |
|----|---|--------------------------------------|--------------------------------------|--------------------------------------|--------------------------------------|--------------------------------------|--------------------------------------|
| 4 | Bearing Assy. – Includes the Following: | 186040LF ¹ | 186042LF ² | 186041LF ³ | 186043LF ¹ | 186045LF ² | 186044LF ³ |
| 11 | Seal Kit No. <i>Seal Type</i> | 186049LF ¹ <i>Std.</i> | 186050LF ² <i>Opt.</i> | 186051LF ³ <i>Opt.</i> | 186049LF ¹ <i>Std.</i> | 186050LF ² <i>Opt.</i> | 186051LF ³ <i>Opt.</i> |
| | XL-11™ Lrg. Bearing Frame Repair Kit* | 185337LF* | 185337LF* | 185337LF* | 185338* | 185338* | 185338* |
| 2 | Volute Gasket | P57700 | P57700 | P57700 | P57700 | P57700 | P57700 |
| 12 | Cover Plate | P2000095 | P2000095 | P2000095 | P2000095 | P2000095 | P2000095 |
| 16 | Coupler Cover | P03982 | P03982 | P03982 | P03982 | P03982 | P03982 |

¹EPR/Carbon/SiC ²FKM/Carbon/SiC ³EPR/SiC/SiC

*Includes pre-assembled faceplate, nose cone, shaft and bearings. Wave spring and volute gasket are also supplied.

ITEM NO. 5 COUPLERS

See chart, p.15

ITEM NO. 6 POWER PACKS

| HP | 1 PHASE 115/208-230 | 3 PHASE 208-230/460 | RING MOUNTS |
|-----------------------------|------------------------|------------------------|-------------|
| ³ / ₄ | 169230 | 169231 | 118228 |
| 1 | 169232 | 169233 | 118848 |
| 1.5 | 169236 | 169237 | NONE |
| 2 | NONE | 169238 | NONE |

SERIES e-60 2x2x5.25

VOLUTES, IMPELLERS & FLANGES

| ITEM NO. | DESCRIPTION | BRONZE FITTED | ALL BRONZE |
|----------|-----------------------------|---------------|------------|
| 1 | Volute | 186392 | 186933LF |
| 10 | Volute Drain Plug (5 Req'd) | P39020 | P39470 |
| 7 | Volute Capscrew (8 Req'd) | P10620 | P10620 |
| 2 | Volute Gasket | P57410 | P57410 |
| 8 | Impeller (State Diameter) | P58536 | P58536 |
| | Impeller Key | P04940 | P04940 |
| 9 | Impeller Nut | P2000236 | P2000236 |
| 3 | Impeller Washer | P04660 | P04660 |
| | Flange (2 Req'd) | F14200 | P2000078 |
| | Fastener Package (2 Req'd) | P65031 | P65030 |
| | Flange Gasket Set | 118378 | 118378 |
| | Motor Ring Adapter | P76944 | P76944 |

XL-11™ BEARING ASSEMBLIES (FOR BF OR AB PUMPS)

| ITEM NO. | DESCRIPTION | MODELS WITH COPPER SHAFT SLEEVE | | | MODELS WITH STAINLESS STEEL SHAFT SLEEVE | | |
|----------|--|---------------------------------|--------------------------------------|--------------------------------------|--|--------------------------------------|--------------------------------------|
| | | | | | | | |
| 4 | Bearing Assy. – Includes the Following: | 186028LF ¹ | 186029LF ² | 186030LF ³ | 186031LF ¹ | 186032LF ² | 186033LF ³ |
| 11 | Seal Kit No. <i>Seal Type</i> | 186046LF ¹ Std. | 186047LF ² <i>Opt.</i> | 186048LF ³ <i>Opt.</i> | 186046LF ¹ Std. | 186047LF ² <i>Opt.</i> | 186048LF ³ <i>Opt.</i> |
| | XL-11™ Small Bearing Frame Repair Kit* | 185335LF* | 185335LF* | 185335LF* | 185336 | 185336 | 185336 |
| 2 | Volute Gasket | P57410 | P57410 | P57410 | P57410 | P57410 | P57410 |

¹EPR/Carbon/SiC ²FKM/Carbon/SiC ³EPR/SiC/SiC

*Includes pre-assembled faceplate, nose cone, shaft and bearings. Wave spring and volute gasket are also supplied.

ITEM NO. 5 COUPLERS

See chart, p.15

ITEM NO. 6 POWER PACKS

| HP | 1 PHASE 115/208-230 | 3 PHASE 208-230/460 | RING MOUNTS |
|-----|------------------------|------------------------|-------------|
| 1/3 | 169226 | 169227 | 118228 |
| 1/2 | 169228 | 169229 | 118228 |
| 3/4 | 169230 | 169231 | 118228 |
| 1 | 169232 | 169233 | 118848 |
| 1.5 | 169236 | 169237 | NONE |

– Factory recommended spare parts.

SERIES e-60 2x2x6.25

VOLUTES, IMPELLERS & FLANGES

| ITEM NO. | DESCRIPTION | BRONZE FITTED | ALL BRONZE |
|----------|---------------------------------|---------------|------------|
| 1 | Volute | 186936 | 186672LF |
| 10 | Volute Drain Plug (5 Req'd) | P39020 | P39470 |
| 7 | Volute Capscrew (8 Req'd) | P10620 | P10620 |
| 2 | Volute Gasket | P57410 | P57410 |
| 13 | Adapter Ring | P58576 | P58578 |
| 14 | Adapter Ring Capscrew (8 Req'd) | DJ0034 | P10620 |
| 15 | Adapter Ring Gasket | P58542 | P58542 |
| 8 | Impeller (State Diameter) | P58562 | P58562 |
| | Impeller Key | P04940 | P04940 |
| 9 | Impeller Nut | P2000236 | P2000236 |
| 3 | Impeller Washer | P04660 | P04660 |
| | Flange (2 Req'd) | F14200 | P2000078 |
| | Fastener Package (2 Req'd) | P65031 | P65030 |
| | Flange Gasket Set | 118378 | 118378 |
| | Motor Ring Adapter | P76944 | P76944 |

XL-11™ BEARING ASSEMBLIES (FOR BF OR AB PUMPS)

| ITEM NO. | DESCRIPTION | MODELS WITH COPPER SHAFT SLEEVE | | | MODELS WITH STAINLESS STEEL SHAFT SLEEVE | | |
|----------|--|---------------------------------|--------------------------------------|--------------------------------------|--|--------------------------------------|--------------------------------------|
| | | | | | | | |
| 4 | Bearing Assy. – Includes the Following: | **186028LF ¹ | **186029LF ² | **186030LF ³ | **186031LF ¹ | **186032LF ² | **186033LF ³ |
| 11 | Seal Kit No. <i>Seal Type</i> | 186046LF ¹ Std. | 186047LF ² <i>Opt.</i> | 186048LF ³ <i>Opt.</i> | 186046LF ¹ Std. | 186047LF ² <i>Opt.</i> | 186048LF ³ <i>Opt.</i> |
| | XL-11™ Small Bearing Frame Repair Kit* | 185335LF* | 185335LF* | 185335LF* | 185336* | 185336* | 185336* |
| 2 | Volute Gasket | P57410 | P57410 | P57410 | P57410 | P57410 | P57410 |

¹EPR/Carbon/SiC ²FKM/Carbon/SiC ³EPR/SiC/SiC

*Includes pre-assembled faceplate, nose cone, shaft and bearings. Wave spring and volute gasket are also supplied.

**Adapter Ring Gasket P58542 must also be ordered when bearing assembly is replaced on all 6½" pumps.

ITEM NO. 5 COUPLERS

See chart, p.15

ITEM NO. 6 POWER PACKS

| HP | 1 PHASE 115/208-230 | 3 PHASE 208-230/460 | RING MOUNTS |
|-------|------------------------|------------------------|-------------|
| 1/2 | 169228 | 169229 | 118228 |
| 3/4 | 169230 | 169231 | 118228 |
| 1 | 169232 | 169233 | 118848 |
| 1 1/2 | 169236 | 169237 | NONE |

– Factory recommended spare parts.

SERIES e-60 2x2x7

VOLUTES, IMPELLERS & FLANGES

| ITEM NO. | DESCRIPTION | BRONZE FITTED | ALL BRONZE |
|----------|-----------------------------|---------------|------------|
| 1 | Volute | 186937 | 186938LF |
| 10 | Volute Drain Plug (5 Req'd) | P39020 | P39470 |
| 7 | Volute Capscrew (8 Req'd) | P40020 | P52310 |
| 2 | Volute Gasket | P57700 | P57700 |
| 8 | Impeller (State Diameter) | P57580 | P57580 |
| | Impeller Key | P49358 | P49358 |
| 9 | Impeller Nut | P2000220 | P2000220 |
| 3 | Impeller Washer | P11220 | P11220 |
| | Flange (2 Req'd) | F14200 | P2000078 |
| | Fastener Package (2 Req'd) | P65031 | P64930 |
| | Flange Gasket Set | 118378 | 118378 |

XL-11™ BEARING ASSEMBLIES

FOR BRONZE FITTED (BF) PUMPS

| ITEM NO. | DESCRIPTION | MODELS WITH COPPER SHAFT SLEEVE | | | MODELS WITH STAINLESS STEEL SHAFT SLEEVE | | |
|----------|---|--------------------------------------|--------------------------------------|--------------------------------------|--|--------------------------------------|--------------------------------------|
| | | | | | | | |
| 4 | Bearing Assy. – Includes the following: | 186034LF ¹ | 186036LF ² | 186035LF ³ | 186037LF ¹ | 186039LF ² | 186038LF ³ |
| 11 | Seal Kit No. <i>Seal Type</i> | 186049LF ¹ <i>Std.</i> | 186050LF ² <i>Opt.</i> | 186051LF ³ <i>Opt.</i> | 186049LF ¹ <i>Std.</i> | 186050LF ² <i>Opt.</i> | 186051LF ³ <i>Opt.</i> |
| | XL-11™ Lrg. Bearing Frame Repair Kit* | 185337LF* | 185337LF* | 185337LF* | 185338* | 185338* | 185338* |
| 2 | Volute Gasket | P57700 | P57700 | P57700 | P57700 | P57700 | P57700 |
| 12 | Cover Plate | P57246 | P57246 | P57246 | P57246 | P57246 | P57246 |
| 16 | Coupler Cover | P03982 | P03982 | P03982 | P03982 | P03982 | P03982 |

FOR ALL BRONZE (AB) PUMPS

| | | | | | | | |
|----|---|--------------------------------------|--------------------------------------|--------------------------------------|--------------------------------------|--------------------------------------|--------------------------------------|
| 4 | Bearing Assy. – Includes the Following: | 186040LF ¹ | 186042LF ² | 186041LF ³ | 186043LF ¹ | 186045LF ² | 186044LF ³ |
| 11 | Seal Kit No. <i>Seal Type</i> | 186049LF ¹ <i>Std.</i> | 186050LF ² <i>Opt.</i> | 186051LF ³ <i>Opt.</i> | 186049LF ¹ <i>Std.</i> | 186050LF ² <i>Opt.</i> | 186051LF ³ <i>Opt.</i> |
| | XL-11™ Lrg. Bearing Frame Repair Kit* | 185337LF* | 185337LF* | 185337LF* | 185338* | 185338* | 185338* |
| 2 | Volute Gasket | P57700 | P57700 | P57700 | P57700 | P57700 | P57700 |
| 12 | Cover Plate | P2000095 | P2000095 | P2000095 | P2000095 | P2000095 | P2000095 |
| 16 | Coupler Cover | P03982 | P03982 | P03982 | P03982 | P03982 | P03982 |

¹EPR/Carbon/SiC²FKM/Carbon/SiC³EPR/SiC/SiC

*Includes pre-assembled faceplate, nose cone, shaft and bearings. Wave spring and volute gasket are also supplied.

ITEM NO. 5 COUPLERS

See chart, p.15

ITEM NO. 6 POWER PACKS

| HP | 1 PHASE 115/208-230 | 3 PHASE 208-230/460 | RING MOUNTS |
|-----------------------------|------------------------|------------------------|----------------|
| ³ / ₄ | 169230 | 169231 | 118228 |
| 1 | 169232 | 169233 | 118848 |
| 1½ | 169236 | 169237 | NONE |
| 2 | NONE | 169238 | NONE |
| 3 | NONE | 169234 | NONE |

SERIES e-60 3x3x5.25

VOLUTES, IMPELLERS & FLANGES

| ITEM NO. | DESCRIPTION | BRONZE FITTED | ALL BRONZE |
|----------|-----------------------------|---------------|------------|
| 1 | Volute | 118449 | P09290 |
| 10 | Volute Drain Plug (5 Req'd) | P39020 | P39470 |
| 7 | Volute Capscrew (8 Req'd) | P10620 | P01850 |
| 2 | Volute Gasket | P57410 | P57410 |
| 8 | Impeller (State Diameter) | P58536 | P58536 |
| | Impeller Key | P04940 | P04940 |
| 9 | Impeller Nut | P2000236 | P2000236 |
| 3 | Impeller Washer | P04660 | P04660 |
| | Flange (2 Req'd) | F74000 | P2000081 |
| | Fastener Package | P65130 | P65130 |
| | Flange Gasket Set | 118129 | 118129 |
| | Motor Ring Adapter | P76944 | P76944 |

XL-11™ BEARING ASSEMBLIES (FOR BF OR AB PUMPS)

| ITEM NO. | DESCRIPTION | MODELS WITH COPPER SHAFT SLEEVE | | | MODELS WITH STAINLESS STEEL SHAFT SLEEVE | | |
|----------|--|---------------------------------|-------------------------------|-------------------------------|--|-------------------------------|-------------------------------|
| | | | | | | | |
| 4 | Bearing Assy. – Includes the Following: | 186028LF ¹ | 186029LF ² | 186030LF ³ | 186031LF ¹ | 186032LF ² | 186033LF ³ |
| 11 | Seal Kit No. <i>Seal Type</i> | 186046LF ¹ Std. | 186047LF ² Opt. | 186048LF ³ Opt. | 186046LF ¹ Std. | 186047LF ² Opt. | 186048LF ³ Opt. |
| | XL-11™ Small Bearing Frame Repair Kit* | 185335LF* | 185335LF* | 185335LF* | 185336 | 185336 | 185336 |
| 2 | Volute Gasket | P57410 | P57410 | P57410 | P57410 | P57410 | P57410 |

¹EPR/Carbon/SiC ²FKM/Carbon/SiC ³EPR/SiC/SiC

*Includes pre-assembled faceplate, nose cone, shaft and bearings. Wave spring and volute gasket are also supplied.

ITEM NO. 5 COUPLERS

See chart, p.15


ITEM NO. 6 POWER PACKS

| HP | 1 PHASE 115/208-230 | 3 PHASE 208-230/460 | RING MOUNTS |
|-------|------------------------|------------------------|-------------|
| 1/3 | 169226 | 169227 | 118228 |
| 1/2 | 169228 | 169229 | 118228 |
| 3/4 | 169230 | 169231 | 118228 |
| 1 | 169232 | 169233 | 118848 |
| 1 1/2 | 169236 | 169237 | NONE |

– Factory recommended spare parts.

ITEM NO. 5 COUPLERS

| PUMP SIZE | SHAFT DIAMETER | MOTOR HP (60 Hz) | MOTOR FRAME SIZE | MOTOR SHAFT SIZE | STANDARD COUPLER | ELASTOMERIC COUPLER OPTION |
|--------------------|----------------|------------------|------------------|------------------|------------------------|----------------------------|
| 1x1x5.25 | ½" | ¼ - ½ | B&G POWER | ½" | 118473 | 185329 |
| 1.25x1.25x5.25 | | ¾ - 1 | PACK | | 185329 | 185329 |
| 1.5x1.5x5.25 | | ¼ - 1.5 | 56 | ⅝" | 185330 | 185330 |
| 1.5x1.5x6.25 | | 1.5 | 56C | ⅝" | P75421 | P75421 |
| 2x2x5.25 | | 1.5 | 143TC | ⅞" | P75422 | P75422 |
| 2x2x6.25 | | 1 - 1.5 | 143 / 145 | ⅞" | P58598 | P58598 |
| 3x3x5.25 | | | | | | |
| 1.5x1.5x7 2x2x7 | ¾" | ¾ - 1 | B&G POWER | ½" | 186410 | 185330 |
| | | 1 | PACK | | 185330 | 185330 |
| | | ¾ - 1 | 56 | ⅝" | 186004 | 186004 |
| | | 1.5 - 3 | 56 | ⅝" | 186003 | 186003 |
| | | 1.5 - 3 | 143 / 145 | ⅞" | 185331 | 185331 |
| | | 3 | 182 / 184 | 1⅛" | P77281 | P77281 |

 - Factory recommended spare parts.

Xylem |'zīləm|

- 1) The tissue in plants that brings water upward from the roots;
- 2) a leading global water technology company.

We're a global team unified in a common purpose: creating advanced technology solutions to the world's water challenges. Developing new technologies that will improve the way water is used, conserved, and re-used in the future is central to our work. Our products and services move, treat, analyze, monitor and return water to the environment, in public utility, industrial, residential and commercial building services, and agricultural settings. With its October 2016 acquisition of Sensus, Xylem added smart metering, network technologies and advanced data analytics for water, gas and electric utilities to its portfolio of solutions. In more than 150 countries, we have strong, long-standing relationships with customers who know us for our powerful combination of leading product brands and applications expertise with a strong focus on developing comprehensive, sustainable solutions.

For more information on how Xylem can help you, go to www.xylem.com

We value your feedback. Please take our 3 question survey at **bellgossett.com/survey** to let us know how we are doing.



Xylem Inc.
8200 N. Austin Avenue
Morton Grove, Illinois 60053
Phone: (847) 966-3700
Fax: (847) 965-8379
www.bellgossett.com

Bell & Gossett is a trademark of Xylem Inc. or one of its subsidiaries.
© 2017 Xylem Inc. CP-107-PL May 2017