



# CATALOG OF REPLACEMENT PARTS

## MODEL X13-PLUS SERIES SLICERS

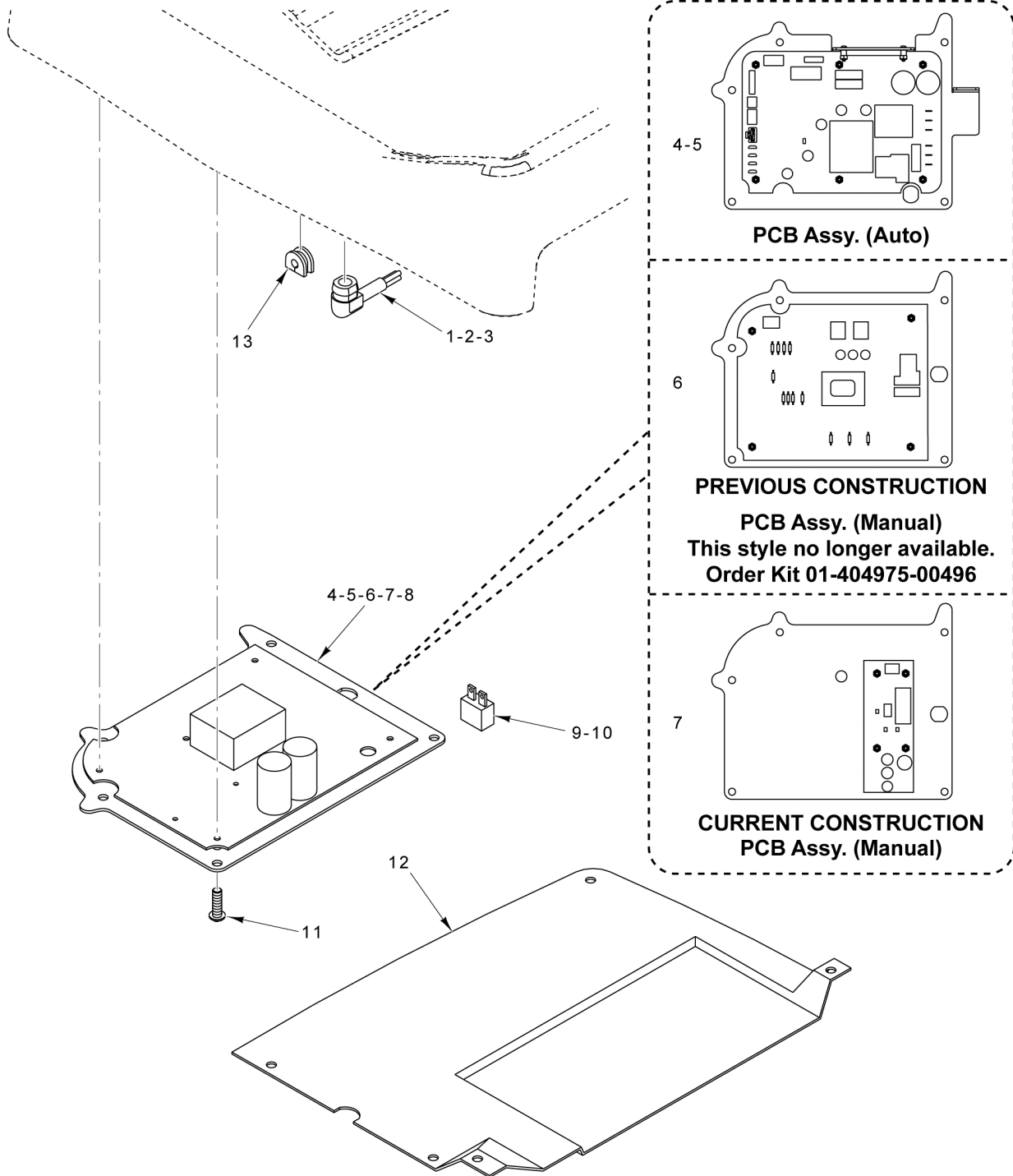


- |                  |  |
|------------------|--|
| <b>ML-136257</b> | <b>X13 PLUS (Manual<br/>W/Interlocks)</b>    |
| <b>ML-136258</b> | <b>X13A PLUS (Auto W/<br/>Interlocks)</b>    |
| <b>ML-136259</b> | <b>X13AE PLUS (Auto<br/>W/O Interlocks)</b>  |
| <b>ML-136262</b> | <b>X13E PLUS (Manual<br/>W/O Interlocks)</b> |



**Table of Contents**

5	ELECTRICAL COMPONENTS
7	RING GUARD AND CENTER PLATE
9	ARM ASSEMBLY
11	GAUGE PLATE ASSEMBLY
13	PRODUCT TABLE
15	KNIFE AND MOTOR ASSEMBLY
17	AUTODRIVE ASSEMBLY
19	KNIFE SHARPENER UNIT
21	KICKSTAND ASSEMBLY AND ACCESSORIES
23	HARNESS - CONTROL BOARD & KEYPAD
25	HARNESS - AUTO CONTROL & AUTO MOTOR



- 14 01-404175-00745 Plug - Jumper (J12)
  - 15 01-404175-00121 Jumper Wire Assy.
- PARTS NOT ILLUSTRATED**

PL-58977

**ELECTRICAL COMPONENTS**

**ELECTRICAL COMPONENTS**

ILLUS.	PART NO.	NAME OF PART	AMT.
	PL-58977		
1	FE-021-21	Strain Relief.....	1
2	01-404175-00719	Cord - Power (120 V.).....	1
3	00-117542-00122	Cord & Plug Assy. (240 V.).....	1
4	01-404875-00057	PCB Assy. - Main Board (120 V., 60 Hz., 1 Ph.) (Auto) (Incls. Items 2 & 9).....	1
5	01-404875-00061	PCB Assy. - Main Board (230V., 50 Hz., 1 Ph.) (Incls. Items 3 & 10).....	1
*6	01-404975-00496	Kit - PCB Assy. (Manual) (Before S/N 311481491) (Incls. Items 2, 7, 9, 14, & 15).....	1
7	01-404875-00060	PCB Assy. (Manual) (Starting S/N 311481932) (Incls. Items 2, 9, 14, & 15).....	1
8	01-402675-00752	Circuit Breaker (12 Amp., 120 V.).....	1
9	00-088196-016-2	Switch Reset (10 Amp.).....	1
10	00-088196-00035	Switch Reset (Canada) (5 Amp.).....	1
11	01-402175-02854	Cap Screw M5 x 10mm Button Socket Hd.....	3
12	01-403875-00238	Cover - Bottom.....	1
13	01-403875-00234	Grommet - Electric Enclosure.....	1
14	01-404175-00745	Plug - Jumper (J12) (Required for X13A or X13AE Slicers).....	1
15	01-404175-00121	Jumper Wire Assy.....	1

\* (Also Incls. Items 2, 5, 31, & 34 on GAUGE PLATE ASSEMBLY)

**WARNING / AVERTISSEMENT**

- Rotating knife
- Use product table handle
- Sharpen knife in manual mode
- Read owners manual before operating
- Close gouge plate when not in use
- Unplug cord before cleaning, servicing or removing parts
- Lame rotative
- Utilisez la poignée du porte-produit
- Affûtez la lame en mode manuel
- Lisez le mode d'emploi avant d'utiliser l'appareil
- Fermez la plaque de calibrage quand l'appareil n'est pas en service
- Débranchez le cordon électrique avant de nettoyer, entretenir ou retirer des pièces de cet appareil

**WARNING/AVERTISSEMENT**

HIGH VOLTAGE ELECTRONICS ENCLOSED  
 - DO NOT OPEN  
 - UNPLUG MACHINE  
 - CALL YOUR AUTHORIZED SERVICE AGENT

DISPOSITIFS ÉLECTRONIQUES À HAUTE TENSION  
 À L'INTÉRIEUR  
 - NE PAS OUVRIR  
 - DEBRANCHEZ L'APPAREIL  
 - CONTACTEZ VOTRE AGENCE DE SERVICE TECHNIQUE AUTORISÉE

GRD/TERRE

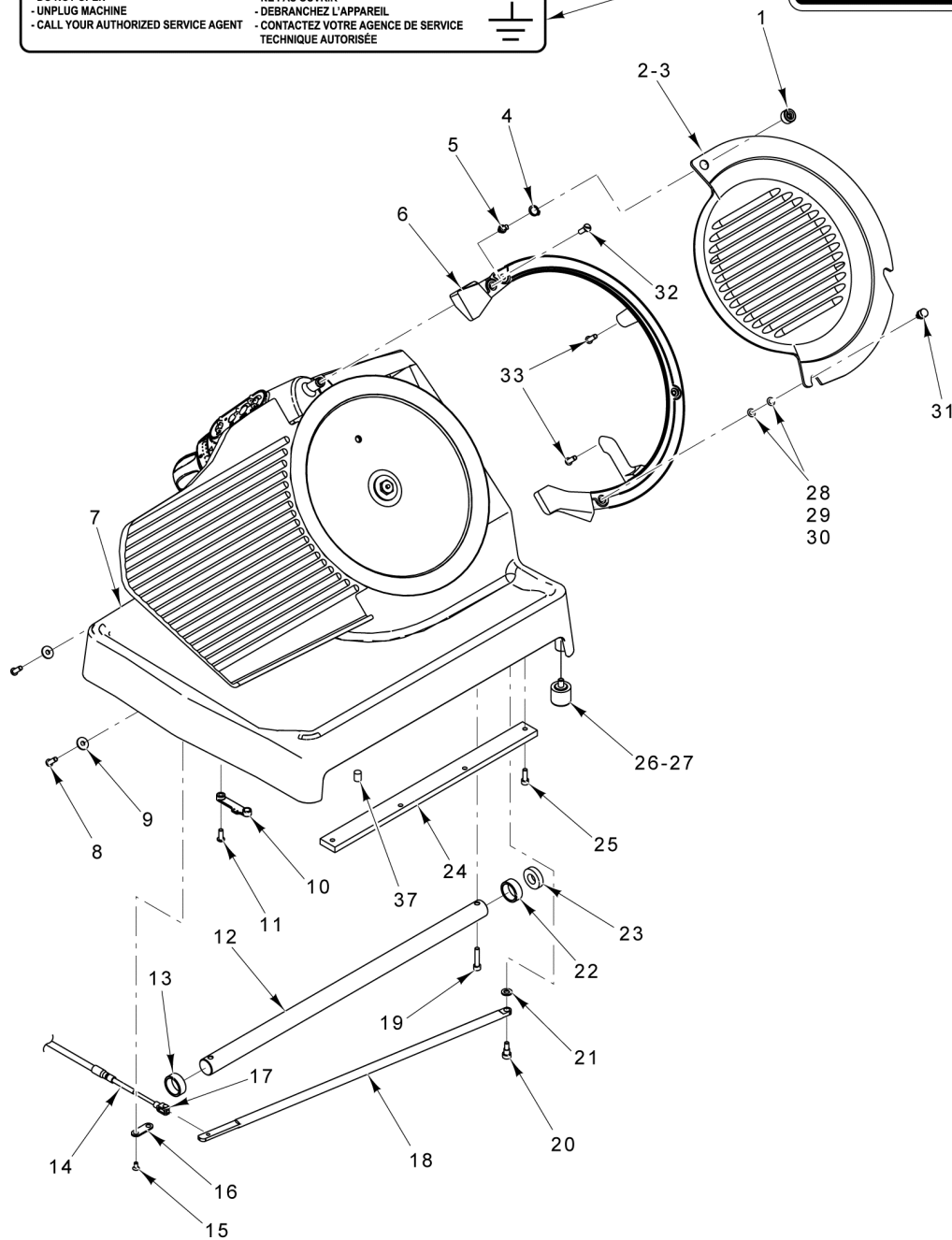
**WARNING**

This area contains a chemical known to the State of California to cause cancer, birth defects or other reproductive harm.

**AVERTISSEMENT**

Cette zone contient un agent chimique connu dans l'État de la Californie pour causer le cancer, des malformations congénitales ou autres anomalies de la reproduction.

00-916957-00118

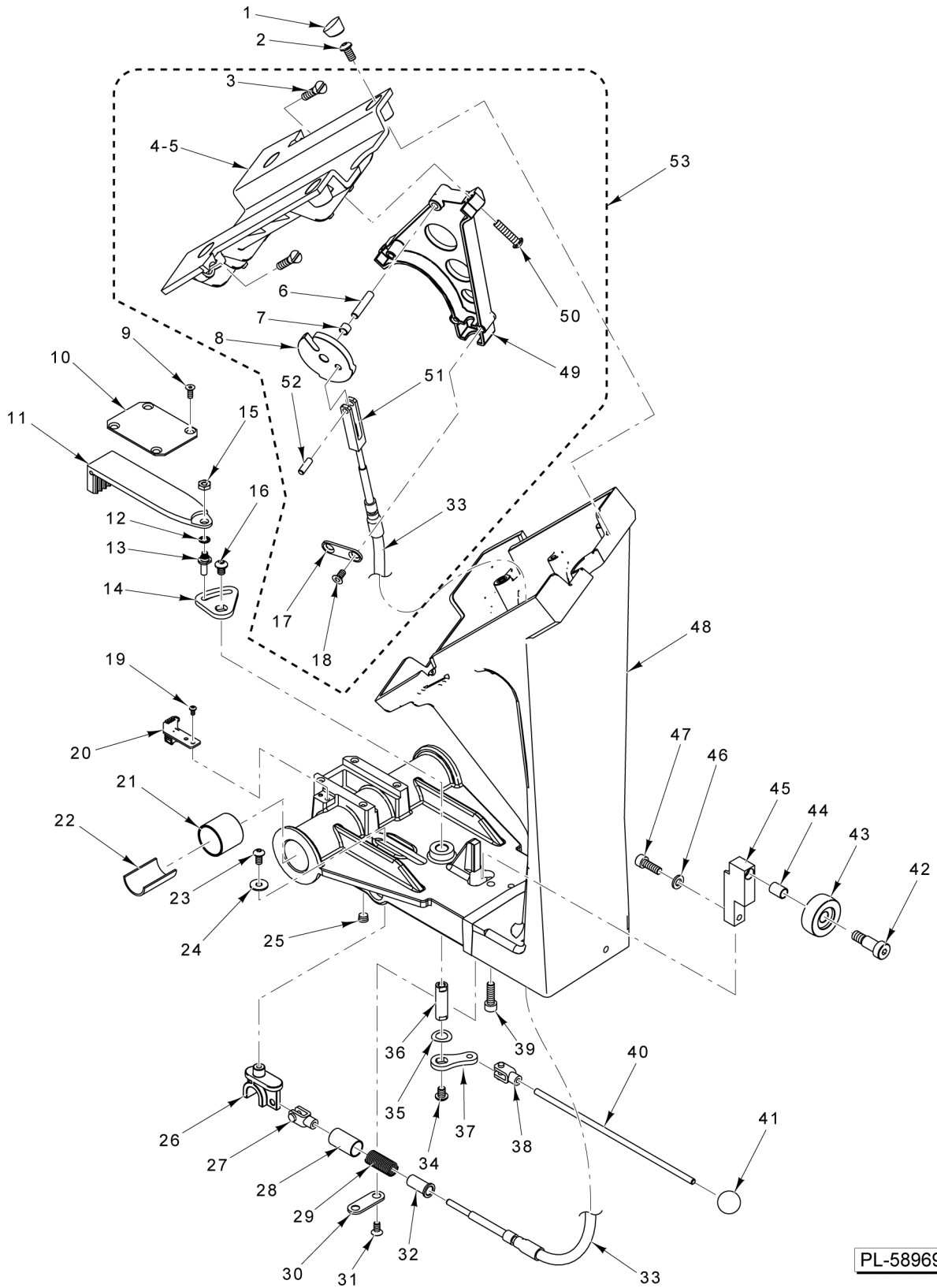


PL-58968

**RING GUARD AND CENTER PLATE**

## RING GUARD AND CENTER PLATE

ILLUS.	PART NO.	NAME OF PART	AMT.
PL-58968			
1	01-403375-01392	Knob.....	1
2	01-404675-01144	Center Plate Assy. (Incls. Items 1, 3, & 4).....	1
3	01-403775-00499	Center Plate - Solid.....	1
4	01-402275-00608	Ring - Retaining (5160).....	1
5	01-403375-01391	Stud - Post.....	1
6	01-403775-00497	Ring Guard.....	1
7	01-403875-00171	Base.....	1
8	01-402175-02867	Screw M6 x 18mm Button Socket Hd. (For Ring Guard).....	2
9	01-402275-00586	Washer.....	2
10	01-403875-00183	Guide - Interlock Slide Bar.....	1
11	01-402175-02866	Cap Screw M6 x 16mm Button Socket Hd. (SST).....	2
12	01-403375-01306	Rail - Round.....	1
13	01-403275-00233	Bumper - Transport Rail.....	1
14	01-402375-00175	Cable - Interlock Base Assy.....	1
15	SC-120-93	Mach. Screw M5 x 0.8 x 10mm Hex Flat Hd. (SST).....	2
16	01-403375-01286	Clamp - Interlock Assy.....	1
17	01-402375-00184	Clevis - Stock.....	1
18	01-403375-01275	Slide - Bar Interlock.....	1
19	01-402175-02861	Screw M6 x 6mm Button Socket Hd.....	2
20	01-402175-00503	Shoulder Bolt.....	1
21	01-402275-00588	Washer.....	1
22	01-403275-00243	Bumper - Rubber.....	1
23	01-402275-00629	Washer - Bumper.....	1
24	01-403375-01278	Rail - Square.....	1
25	01-402175-02743	Cap Screw M6 x 14mm.....	4
26	01-403875-00239	Foot.....	4
27	01-403875-00249	Foot (Suction).....	4
28	01-403275-00237	Shim (1.0mm).....	AR
29	01-403275-00238	Shim (0.5mm).....	AR
30	01-403275-00241	Shim (0.3mm).....	AR
31	01-403375-01388	Shoulder Stud.....	2
32	01-402175-00529	Screw Flat Hd.....	1
33	01-402175-02744	Cap Screw Socket Hd.....	2
34	00-916957-00021	Label - Warning.....	1
35	00-916957-00018	Label - Warning (California).....	1
36	00-916957-00023	Label - Warning.....	1
37	01-402675-00912	Magnet.....	1

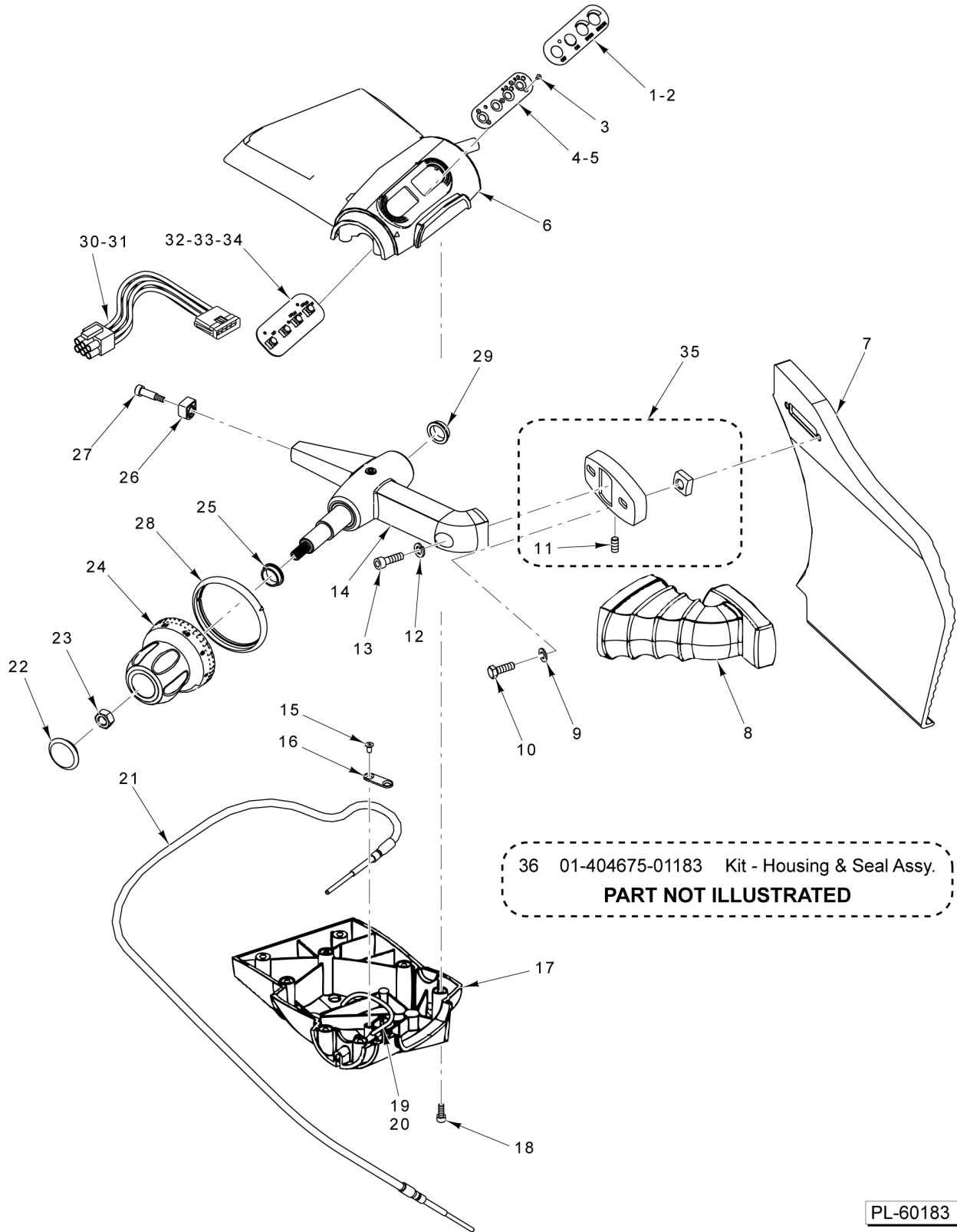


PL-58969

**ARM ASSEMBLY**

## ARM ASSEMBLY

ILLUS.	PART NO.	NAME OF PART	AMT.
PL-58969			
1	01-403875-00235	Plug - Top Plate.....	4
2	01-402175-02864	Cap Screw Socket Button Hd.....	4
3	01-402175-00524	Screw Table Adjustment.....	2
4	01-403875-00233	Top Plate (With Interlock).....	1
5	01-403875-00233	Top Plate (With Interlock).....	1
6	01-402275-00582	Pin - Dowel.....	1
7	01-402275-00614	Bushing.....	1
8	01-404575-01037	Actuator Assy. - Interlock (Incls. Item 7).....	1
9	01-402175-02923	Cap Screw Flat Socket Hd.....	4
10	01-403475-01023	Plate - Autodrive Clutch.....	1
11	01-404575-01033	Clip Assy. - Autodrive Belt (Incls. Items 12, 13, & 15).....	1
12	01-402275-03047	Lockwasher #10 Internal.....	1
13	01-403375-01390	Pin - Eccentric.....	1
14	01-403475-01021	Cam - Autodrive Clutch.....	1
15	01-402175-00082	Nut - Hex.....	1
16	01-402175-02862	Cap Screw Socket Button Hd.....	1
17	01-403375-01286	Clamp - Interlock Assy.....	1
18	01-402175-00520	Self-Tapping Screw Button Socket Hd.....	2
19	01-402175-02831	Cap Screw Socket Button Hd.....	2
20	01-402675-00920	PCB Assy. - Arm Flex Cable.....	1
21	01-402275-00521	Bushing.....	2
22	01-403275-00035	Wick - Oil.....	1
23	01-402175-00520	Self-Tapping Screw Button Socket Hd.....	1
24	01-402275-00589	Washer.....	1
25	01-402175-00541	Plug - Pipe.....	1
26	01-403875-00195	Slider - Interlock Bar.....	1
27	01-402375-00184	Clevis - Stock.....	1
28	01-403875-00498	Spring Cup.....	1
29	01-403275-00236	Spring - Compressed.....	1
30	01-403375-01286	Clamp - Interlock Assy.....	1
31	01-402175-02934	Cap Screw Flat Socket Hd.....	1
32	01-403875-00499	Spring Shoulder.....	1
33	01-402375-00168	Cable - Interlock Arm.....	1
34	01-402175-02862	Cap Screw Socket Button Hd.....	1
35	01-402275-00592	Disc - Spring.....	1
36	01-403375-01376	Shaft - Clutch Pivot.....	1
37	01-403475-01022	Crank - Autodrive Clutch.....	1
38	01-402375-00184	Clevis - Stock (Incls. Pin).....	1
39	01-402175-00510	Screw Socket Nylon Hd.....	1
40	01-403375-01373	Rod - Clutch Engage.....	1
41	01-402275-00580	Knob - Clutch Engage.....	1
42	01-402175-00502	Shoulder Bolt.....	1
43	01-402375-00167	Roller - Transport.....	1
44	01-403375-01378	Spacer - Shaft.....	1
45	01-403375-01280	Mount - Transport Roller.....	1
46	01-402275-00587	Washer.....	1
47	01-402175-02745	Cap Screw Socket Hd.....	1
48	01-404375-00226	Arm - Transport (Incls. Item 21).....	1
49	01-403875-00240	Arm - Top Plate Brace.....	1
50	01-402175-00520	Self-Tapping Screw Button Socket Hd.....	2
51	01-403375-01282	Clevis - Table Interlock.....	1
52	01-402275-00232	Pin - Dowel.....	1
53	01-404675-01127	Top Plate Assy. (W/Interlocks) (Incls. Items 3, 4, 6, 7, 8, 17, 18, 33, & 49 thru 52) .....	1

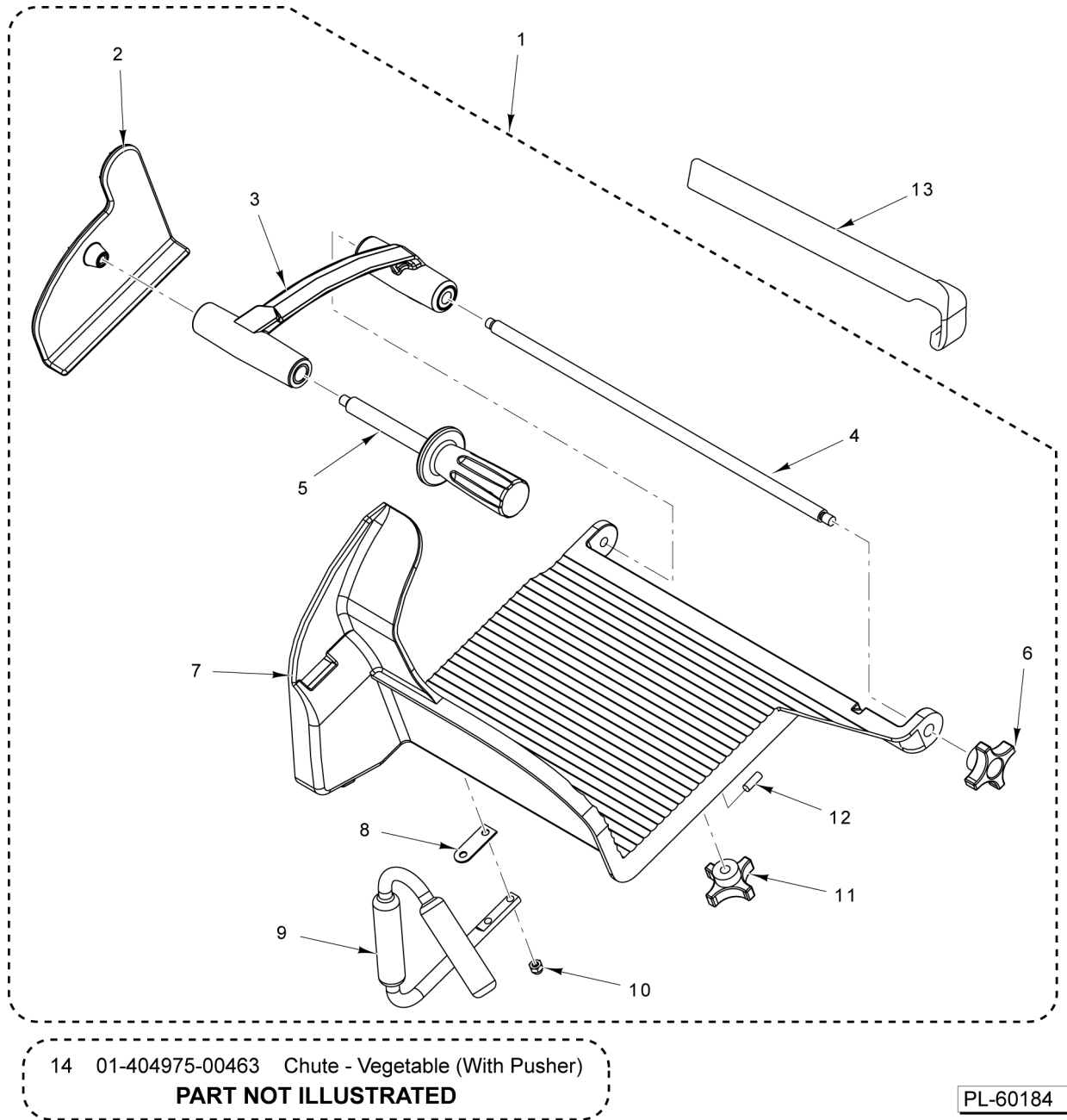


**GAUGE PLATE ASSEMBLY**

**GAUGE PLATE ASSEMBLY**

ILLUS.	PART NO.	NAME OF PART	AMT.
PL-60183			
1	01-403175-00941	Overlay - (Automatic) Berkel.....	1
2	01-403175-00945	Overlay - (Manual) Berkel.....	1
3	01-402175-00528	Screw M5 x 10mm Flat Hd.....	AR
4	01-403875-00237	Mount - Upper (Previous Construction).....	1
5	01-403875-00286	Bezel (Current Construction).....	1
6	01-403875-00283	Housing - Upper.....	1
7	01-403775-00458	Plate - Gauge.....	1
8	01-403875-00236	Boot - Rubber Arm.....	1
9	01-402275-05055	Lockwasher.....	2
10	01-402175-02756	Cap Screw M8 x 20mm Hex Hd.....	2
11	01-402175-00500	Set Screw.....	2
12	01-402275-06075	Lockwasher.....	1
13	01-402175-02779	Cap Screw M12 x 35 Hex Hd.....	1
14	01-404375-00232	Arm - Index Support Assy. (Incls. Items 26 & 27).....	1
15	01-402175-00517	Self-Tapping Screw M5 x 10mm Flat Socket Hd.....	2
16	01-403375-01286	Clamp - Interlock Assy.....	1
17	01-403875-00282	Housing - Lower.....	1
18	01-402175-02744	Cap Screw M6 x 16mm Socket Hd.....	AR
19	01-402275-00609	Grommet Assy. (X13E & X13AE).....	1
20	01-403375-01393	Stop Pin - Index Knob (X13E & X13AE).....	1
21	01-402375-00175	Cable - Interlock Base Assy. (X13 & X13A).....	1
22	01-402275-00414	Plug.....	1
23	01-402175-00504	Nut.....	1
24	01-403875-00173	Knob - Index Assy.....	1
25	01-403875-00257	Bushing - Plastic Flanged.....	1
26	01-403875-00258	Arm - Slider.....	1
27	01-402175-00501	Shoulder Bolt.....	1
28	01-403875-00272	Seal - Index Knob.....	1
29	01-403875-00257	Bushing - Plastic Flanged.....	1
30	01-404175-00715	Harness - Upper Panel (Previous Construction X13 & X13E; All X13A & X13AE).....	1
31	01-404175-00746	Harness - Upper Panel (Current Construction X13 & X13E).....	1
32	01-402675-00918	PCB Assy. Upper (Automatic).....	1
*33	01-404975-00496	Kit - PCB Assy. (Manual) (Incls. Items 2, 5, 31, 34, & 37) (Before S/N 311481491).....	1
34	00-915613	PCB Assy. (Keypad) (Current Construction X13 & X13E).....	1
35	01-404675-01186	Block Assy. (Adjustment) (Incls. Item 11).....	1
36	01-404675-01183	Kit - Housing & Seal Assy. (Incls. Items 6, 17, & 28).....	1

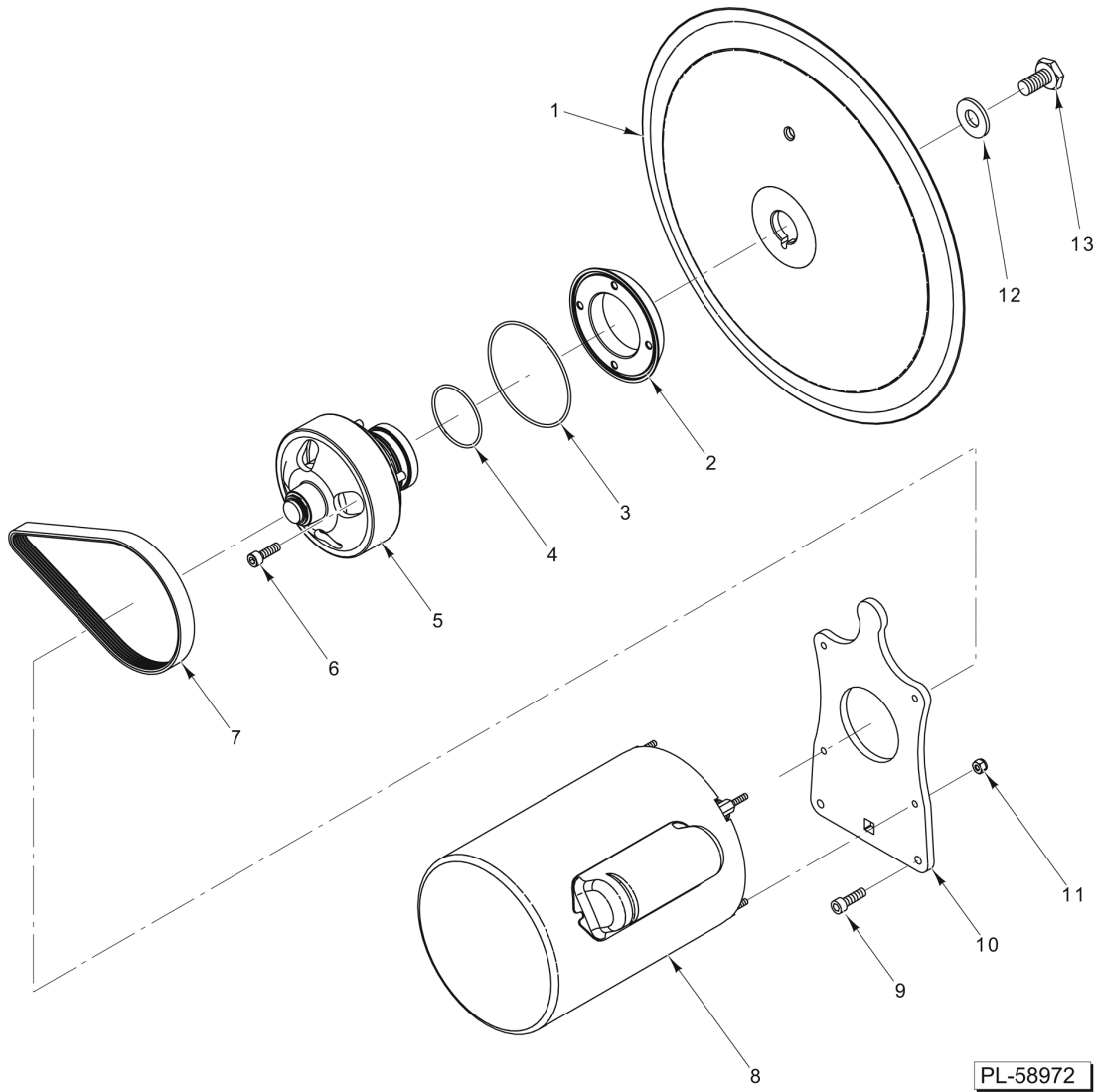
\* (Also Incls. Items 1, 2, 6, 9, & 15 on ELECTRICAL COMPONENTS)



**PRODUCT TABLE**

**PRODUCT TABLE**

ILLUS.	PART NO.	NAME OF PART	AMT.
PL-60184			
1	01-404675-01184	Product Table Assy. (Incls. Items 2 thru 12).....	1
2	01-403875-00177	Pusher Assy.....	1
3	01-404375-00245	Arm - Pusher.....	1
4	01-403375-01417	Rail - Guide.....	1
5	01-404575-01032	Handle - Pusher.....	1
6	01-402275-00622	Knob.....	1
7	01-403875-00284	Table - Product.....	1
8	01-403875-00285	Gasket - Handle.....	1
9	01-403875-00279	Handle Assy.....	1
10	NS-025-04	Crown Nut 1/4-20 (SST).....	2
11	01-402275-00622	Knob.....	1
12	01-402275-00585	Dowel Pin.....	1
13	01-404675-01135	Fence - Product.....	1
14	01-404975-00463	Chute - Vegetable (Incls. Pusher).....	1

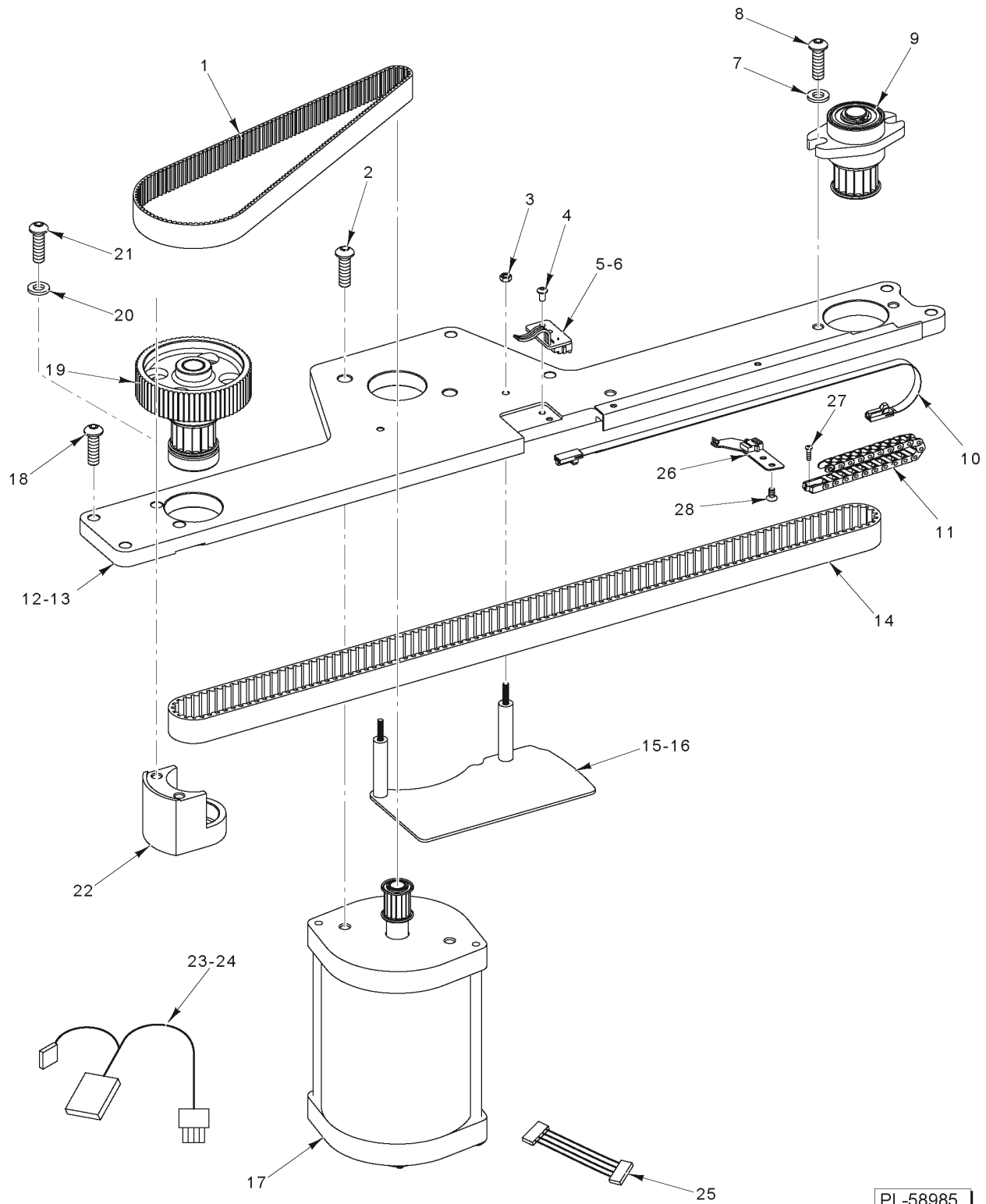


PL-58972

**KNIFE AND MOTOR ASSEMBLY**

**KNIFE AND MOTOR ASSEMBLY**

ILLUS.	PART NO.	NAME OF PART	AMT.
PL-58972			
1	01-403675-00277	Knife.....	1
2	01-403375-01269	Mount - Spindle.....	1
3	01-402275-00530	O-Ring (Spindle Mount).....	1
4	01-402275-00554	O-Ring (Bearing Housing).....	1
5	01-404675-01177	Hub Assy. (Knife) (Incls. Items 2, 3, 4, & 6).....	1
6	01-402175-02745	Cap Screw Socket Hd.....	4
7	01-402375-00176	Belt - Knife Drive.....	1
8	01-404175-00686	Motor (110-115 V.).....	1
9	01-402175-02744	Cap Screw Socket Hd.....	2
10	01-403475-00963	Mount - Knife Motor.....	1
11	NS-031-08	Stop Nut 8-32 Special (SST).....	4
12	01-402275-00524	Washer.....	1
13	01-402175-00468	Bolt - Knife.....	1



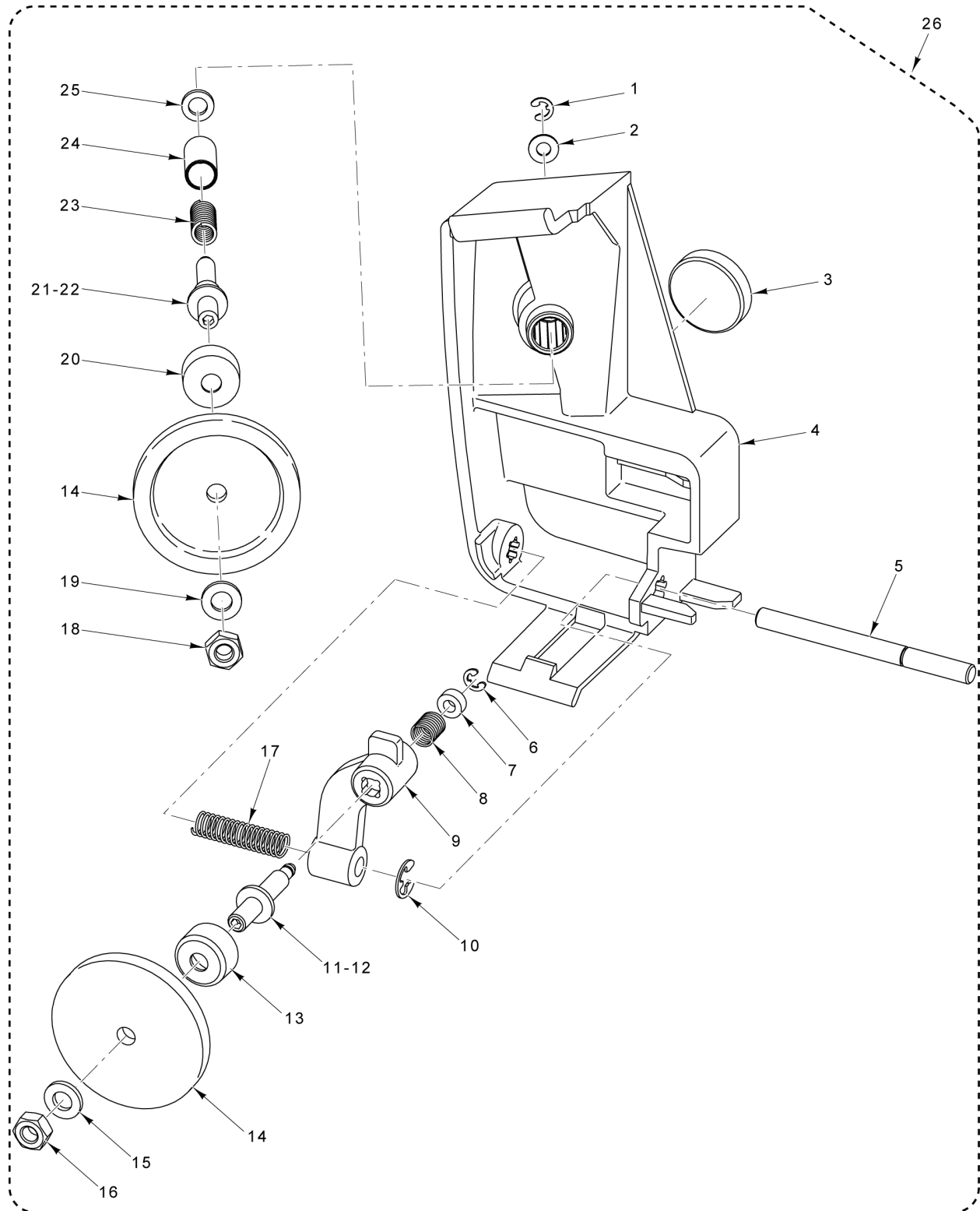
PL-58985

**AUTODRIVE ASSEMBLY**

**AUTODRIVE ASSEMBLY**

ILLUS.	PART NO.	NAME OF PART	AMT.
PL-58985			
1	01-402375-00172	Belt - Secondary.....	1
2	01-402175-02868	Cap Screw Socket Button Hd.....	1
3	01-402175-00522	Lock Nut Hex.....	2
4	01-402175-02831	Cap Screw Socket Button Hd.....	2
5	01-404175-00732	Cable (J4) (Non-Interlock) (X13AE).....	1
6	01-404175-00740	Cable Assy. (J4) (Interlock) (X13A) (Incls. Micro Switch, Not Shown).....	1
7	01-402275-00587	Washer.....	2
8	01-402175-02866	Cap Screw Socket Button Hd.....	2
9	01-404375-00224	Tensioner Assy.....	1
10	01-404175-00714	Flex Cable Assy.....	1
11	01-404675-01185	Flex Chain.....	1
*12	01-404975-00497	Kit - Auto Drive Assy. (Used on Units Without Flex Chain) (Incls. Items 11, 13, 16, & 26).....	1
13	01-403575-00456	Autodrive Plate Assy. (Used on Units With Flex Chain).....	1
14	01-402375-00171	Belt - Primary.....	1
15	01-404675-01151	Guide Assy. (Used On Units Without Flex Chain).....	1
16	01-403875-00287	Guide Assy. (Used On Units With Flex Chain).....	1
**17	00-937902	Kit - Motor Assy. (Incls. Items 24 & 25).....	1
18	01-402175-02868	Cap Screw Socket Button Hd.....	1
19	01-404375-00225	Transmission.....	1
20	01-402275-00603	Washer - Nylon.....	2
21	01-402175-02868	Cap Screw Socket Button Hd.....	2
22	01-403775-00495	Housing - Autodrive Transmission.....	1
***23	01-404175-00716	Harness - Wiring (J9).....	1
****24	00-937901	Harness - Wiring (J9).....	1
25	01-404175-00739	Harness Assy. (Encoder to J9 Harness).....	1
26	01-402675-00920	PCB Assy. - Arm Flex Cable.....	1
27	SC-131-95	Screw M2 x 0.4 x 8mm.....	1
28	01-402175-00521	Cap Screw Socket Button Hd.....	1

\* (Also Incls. Items 1 thru 53 on ARM ASSEMBLY)  
 \*\* Starting S/N: 311564931  
 \*\*\* S/N: 311564930 and below  
 \*\*\*\* S/N: 311564931 and above



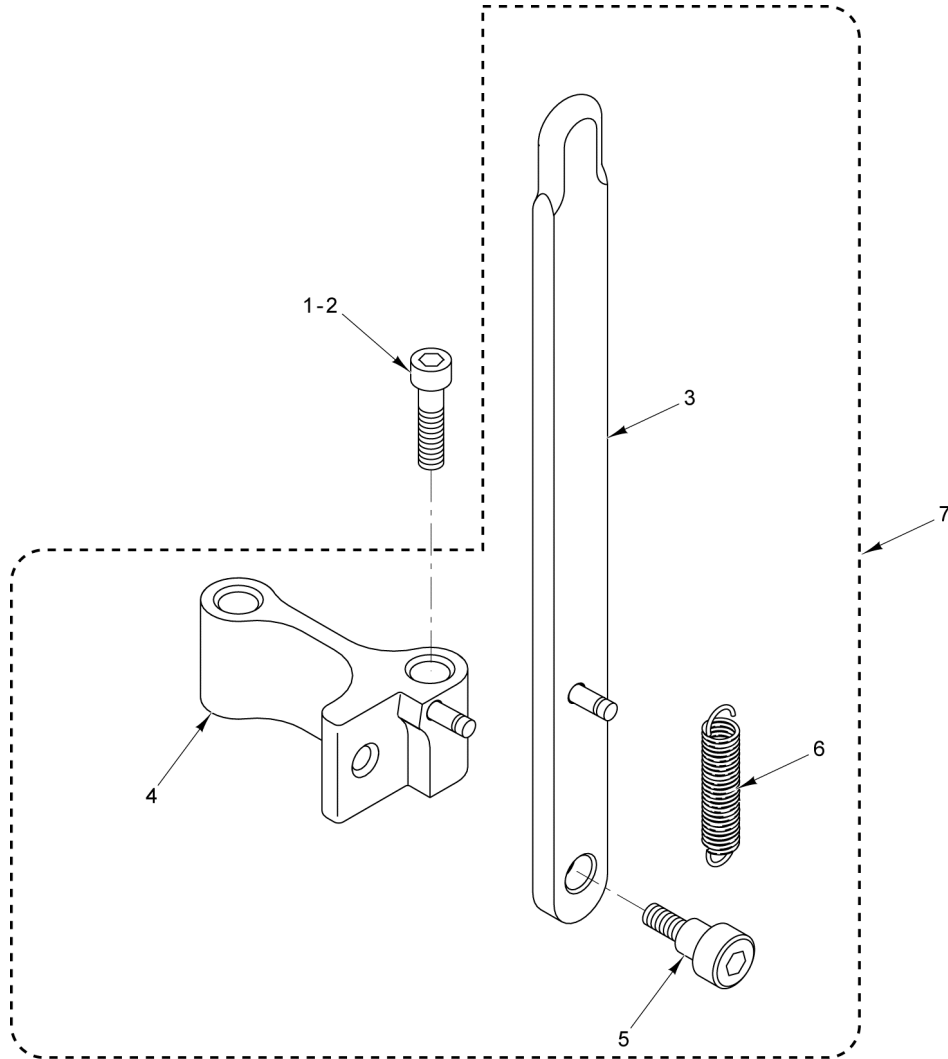
PL-58986

**KNIFE SHARPENER UNIT**

**KNIFE SHARPENER UNIT**

ILLUS.	PART NO.	NAME OF PART	AMT.
PL-58986			
1	01-402275-00594	E-Clip.....	1
2	01-402275-00441	Washer.....	1
3	01-402775-00733	Magnet.....	1
4	01-403875-00231	Frame - Sharpener.....	1
5	01-403375-01381	Shaft - Sharpener Actuator.....	1
6	01-402275-00594	E-Clip.....	1
7	01-402275-00595	Bushing.....	1
8	01-403275-00231	Spring - Debur.....	1
9	01-403875-00230	Frame - Debur.....	1
10	01-402275-00583	E-Clip.....	1
*11	01-404975-00485	Kit - Debur Spindle (RH) (Incls. Item 16).....	1
12	01-403375-01411	Shaft - Debur Spindle (RH).....	1
13	01-403875-00232	Skirt (Debur).....	1
14	01-403675-00283	Stone - Borazon.....	2
15	01-402275-00587	Washer.....	1
*16	01-402175-00540	Nut M6-1 Hex (RH).....	1
17	01-403275-00232	Spring - Sharpener Actuator.....	1
*18	01-402175-00540	Nut M6-1 Hex (RH).....	1
19	01-402275-00587	Washer.....	1
20	01-403875-00232	Skirt (Sharpener).....	1
*21	01-404975-00484	Kit - Sharpening Spindle (RH) (Incls. Item 18).....	1
22	01-403375-01410	Shaft - Sharpening Spindle (RH).....	1
23	01-403275-00230	Spring - Sharpener.....	1
24	01-402275-00596	Bushing.....	1
25	01-403475-01040	Washer - Fiber.....	1
26	01-404675-01158	Knife Sharpener Assy. (Incls. Items 1 thru 25).....	1

\* (When replacing left-hand threaded nuts or shafts with right-hand threaded parts, use kit item 11 or 21. Note that left-hand nuts and shafts are no longer available.)



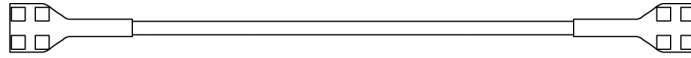
- |   |                 |                                 |
|---|-----------------|---------------------------------|
| 8 | 01-404975-00463 | Chute - Vegetable (With Pusher) |
| 9 | 01-403875-00241 | Tray - Slaw                     |
- PARTS NOT ILLUSTRATED**

PL-58984

**KICKSTAND ASSEMBLY AND ACCESSORIES**

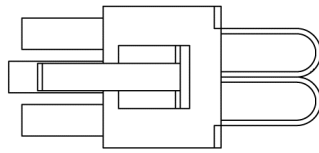
**KICKSTAND ASSEMBLY AND ACCESSORIES**

ILLUS.	PART NO.	NAME OF PART	AMT.
PL-58984			
1	01-402175-00527	Screw M6 x 40mm Button Socket Hd. (Automatic Slicers).....	1
2	01-402175-02869	Cap Screw Button Hd. (Manual Slicers).....	1
3	01-404375-00235	Leg - Kickstand Sub Assy.....	1
4	01-404375-00234	Bracket Assy. - Kickstand.....	1
5	01-402175-00525	Shoulder Bolt.....	1
6	01-403275-00234	Spring - Extension.....	1
7	01-404675-01139	Kickstand Assy. (Incls. Items 3 thru 6).....	1
8	01-404975-00463	Chute - Vegetable (Incls. Pusher).....	1
9	01-403875-00241	Tray - Slaw.....	1



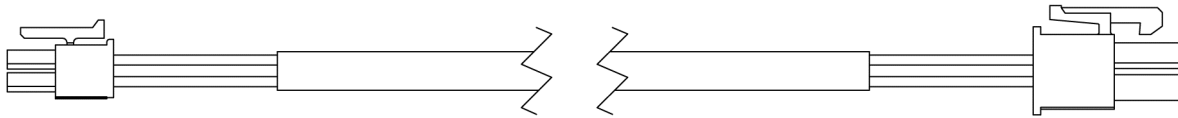
1 01-404175-00121 Jumper Wire Assy. (X13 & X13E)

---



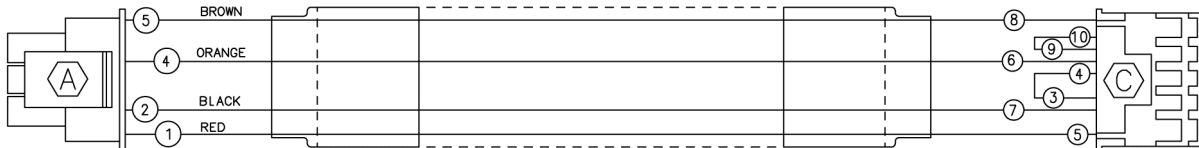
2 01-404175-00745 Plug - Jumper (J12) (X13A & X13AE)

---



3 01-404175-00715 Harness - Upper Panel (Keypad to Main PCB)  
(Previous Construction X13 & X13E) (All X13A & X13AE)

---



4 01-404175-00746 Harness - Upper (Current Construction X13 & X13E) (Keypad to Main PCB)

---

PL-60925

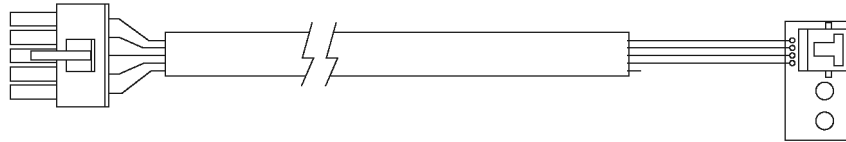
## HARNESS - CONTROL BOARD & KEYPAD

**HARNESS - CONTROL BOARD & KEYPAD**

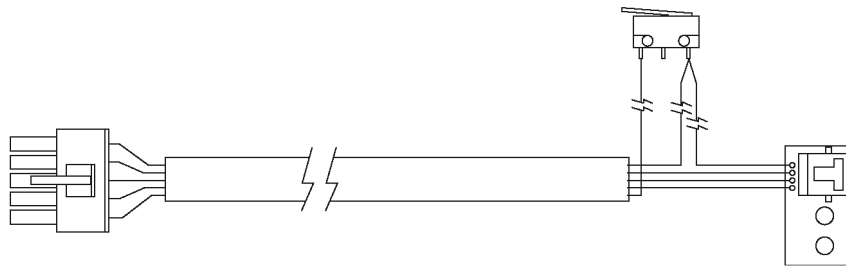
ILLUS.	PART NO.	NAME OF PART	AMT.
PL-60925			
1	01-404175-00121	Jumper Wire Assy. (X13 & X13E).....	1
2	01-404175-00745	Plug - Jumper (J12) (X13A & X13AE).....	1
3	01-404175-00715	Harness - Upper Panel (Keypad to Main PCB) (Previous Construction X13 & X13E) (All X13A & X13AE).....	1
4	01-404175-00746	Harness - Upper Panel (Current Construction X13 & X13E) (Keypad to Main PCB) .....	1



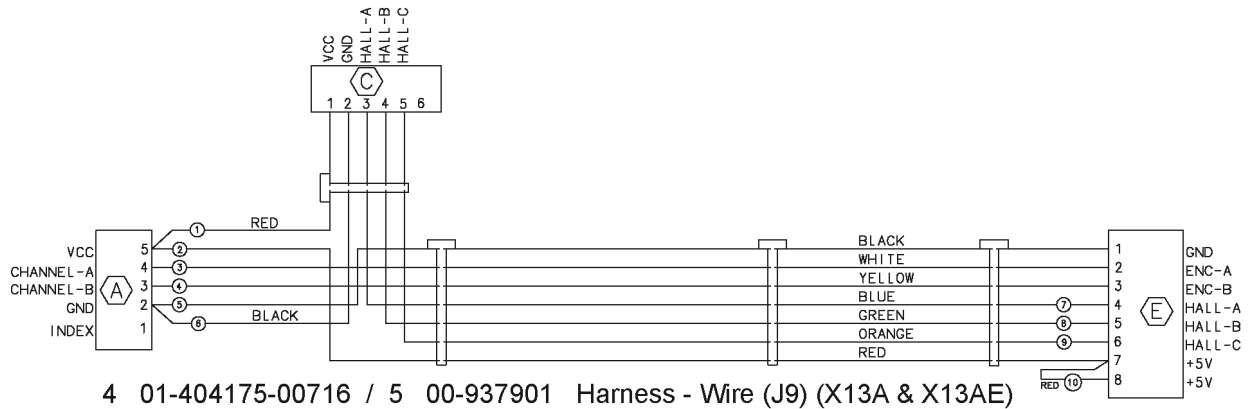
1 01-404175-00714 Flex Cable Assembly (X13A & X13AE)



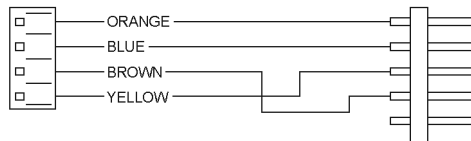
2 01-404175-00732 Harness (J4) (Non-Interlocks) (X13AE)



3 01-404175-00740 Harness (J4) (With Interlocks, Incls. Micro-Switch) (X13A)



4 01-404175-00716 / 5 00-937901 Harness - Wire (J9) (X13A & X13AE)



6 01-404175-00739 Harness Assy. (Encoder to J9 Harness)

PL-60926

**HARNESS - AUTO CONTROL & AUTO MOTOR**

**HARNESS - AUTO CONTROL & AUTO MOTOR**

ILLUS.	PART NO.	NAME OF PART	AMT.
PL-60926			
1	01-404175-00714	Flex Cable Assy. (X13A & X13AE).....	1
2	01-404175-00732	Harness (J4) (Non-Interlocks) (X13AE).....	1
3	01-404175-00740	Harness (J4) (With Interlocks, Incls. Micro-Switch) (X13A).....	1
*4	01-404175-00716	Harness - Wire (J9).....	1
**5	00-937901	Harness - Wire (J9) (X13A & X13AE).....	1
6	01-404175-00739	Harness Assy. (Encoder to J9 Harness).....	1

\* S/N: 311564930 and below  
 \*\* S/N: 311564931 and above

