

MODEL No.

**BLG-TC**

PHASE

**1**

DRAWN BY

**JDS**

VOLTAGE

**120**

AMPS

**5.0**

KILOWATTS

**0.6**

BREAKER SIZE

**15**

REV. No.

**1**

TYPE SIZE

**S B**

DRAWING No.

**16290300**

DATE

**06/29/17**

OPERATOR CONTROL PANEL

TOUCH SCREEN BOARD (NOT SHOWN) (CP0117)

RELAY BOARD CP-0118

9-PIN CAPI/PLUG CONNECTOR

DRAIN, 250V S0064

HI-LIMIT, 54.0" T0036

TRANSFMR, 120V/AC 24V/AC SEC. TF0005

TRANSFMR, 120V/AC 24V/AC SEC. TF0005

MOTOR ON TL CP0110

MOTOR ON TL CP0110

TRANSFORMER, 120VAC PRIMARY, 230VAC SEC. TF0504

TRANSFORMER, 120VAC PRIMARY, 230VAC SEC. TF0504

LEGEND

4-CONDUCTOR NUT

RTD ASSY. T0184

RTD ASSY. T0184

TRANSFMR, 120V/AC 24V/AC SEC. TF0005

TRANSFMR, 120V/AC 24V/AC SEC. TF0005

FUSE, 15A F0097

FUSE, 15A F0097

RELAY R0197

RELAY R0197

FUSE, 1.0A F0417

FUSE, 1.0A F0417

RELAY R0196

RELAY R0196

BLOWER, 120V/AC AB19310900

BLOWER, 120V/AC AB19310900

PUMP MOTOR, 120V M0121

PUMP MOTOR, 120V M0121

WH LIFT ACTUATOR M0113

WH LIFT ACTUATOR M0113

IGNITION TRANSFORMER 6041095

IGNITION TRANSFORMER 6041095

3-PIN CAPI/PLUG CONNECTOR

3-PIN CAPI/PLUG CONNECTOR

FUSE, 1.0A F0417

FUSE, 1.0A F0417

IGNITER X0511

IGNITER X0511

FLAME

FLAME

IGNITION MODULE 7020217

IGNITION MODULE 7020217

GAS VALVE (NOT SHOWN) 7020204

GAS VALVE (NOT SHOWN) 7020204

AIR PRESSURE SWITCH S0097

AIR PRESSURE SWITCH S0097

TRANSFORMER, 120VAC PRIMARY, 230VAC SEC. TF0504

TRANSFORMER, 120VAC PRIMARY, 230VAC SEC. TF0504

3-PIN CAPI/PLUG CONNECTOR

3-PIN CAPI/PLUG CONNECTOR

IGNITION TRANSFORMER 6041095

IGNITION TRANSFORMER 6041095

3-PIN CAPI/PLUG CONNECTOR

3-PIN CAPI/PLUG CONNECTOR

LEGEND

4-CONDUCTOR NUT

RTD ASSY. T0184

RTD ASSY. T0184

TRANSFMR, 120V/AC 24V/AC SEC. TF0005

TRANSFMR, 120V/AC 24V/AC SEC. TF0005

FUSE, 15A F0097

FUSE, 15A F0097

RELAY R0197

RELAY R0197

FUSE, 1.0A F0417

FUSE, 1.0A F0417

RELAY R0196

RELAY R0196

BLOWER, 120V/AC AB19310900

BLOWER, 120V/AC AB19310900

PUMP MOTOR, 120V M0121

PUMP MOTOR, 120V M0121

WH LIFT ACTUATOR M0113

WH LIFT ACTUATOR M0113

IGNITION TRANSFORMER 6041095

IGNITION TRANSFORMER 6041095

3-PIN CAPI/PLUG CONNECTOR

3-PIN CAPI/PLUG CONNECTOR

FUSE, 1.0A F0417

FUSE, 1.0A F0417

IGNITER X0511

IGNITER X0511

FLAME

FLAME

IGNITION MODULE 7020217

IGNITION MODULE 7020217

GAS VALVE (NOT SHOWN) 7020204

GAS VALVE (NOT SHOWN) 7020204

AIR PRESSURE SWITCH S0097

AIR PRESSURE SWITCH S0097

TRANSFORMER, 120VAC PRIMARY, 230VAC SEC. TF0504

TRANSFORMER, 120VAC PRIMARY, 230VAC SEC. TF0504

3-PIN CAPI/PLUG CONNECTOR

3-PIN CAPI/PLUG CONNECTOR

IGNITION TRANSFORMER 6041095

IGNITION TRANSFORMER 6041095

3-PIN CAPI/PLUG CONNECTOR

3-PIN CAPI/PLUG CONNECTOR

LEGEND

4-CONDUCTOR NUT

RTD ASSY. T0184

RTD ASSY. T0184

TRANSFMR, 120V/AC 24V/AC SEC. TF0005

TRANSFMR, 120V/AC 24V/AC SEC. TF0005

FUSE, 15A F0097

FUSE, 15A F0097

RELAY R0197

RELAY R0197

FUSE, 1.0A F0417

FUSE, 1.0A F0417

RELAY R0196

RELAY R0196

BLOWER, 120V/AC AB19310900

BLOWER, 120V/AC AB19310900

PUMP MOTOR, 120V M0121

PUMP MOTOR, 120V M0121

WH LIFT ACTUATOR M0113

WH LIFT ACTUATOR M0113

IGNITION TRANSFORMER 6041095

IGNITION TRANSFORMER 6041095

3-PIN CAPI/PLUG CONNECTOR

3-PIN CAPI/PLUG CONNECTOR

FUSE, 1.0A F0417

FUSE, 1.0A F0417

IGNITER X0511

IGNITER X0511

FLAME

FLAME

IGNITION MODULE 7020217

IGNITION MODULE 7020217

GAS VALVE (NOT SHOWN) 7020204

GAS VALVE (NOT SHOWN) 7020204

AIR PRESSURE SWITCH S0097

AIR PRESSURE SWITCH S0097

TRANSFORMER, 120VAC PRIMARY, 230VAC SEC. TF0504

TRANSFORMER, 120VAC PRIMARY, 230VAC SEC. TF0504

3-PIN CAPI/PLUG CONNECTOR

3-PIN CAPI/PLUG CONNECTOR

IGNITION TRANSFORMER 6041095

IGNITION TRANSFORMER 6041095

3-PIN CAPI/PLUG CONNECTOR

3-PIN CAPI/PLUG CONNECTOR

LEGEND

4-CONDUCTOR NUT

RTD ASSY. T0184

RTD ASSY. T0184

TRANSFMR, 120V/AC 24V/AC SEC. TF0005

TRANSFMR, 120V/AC 24V/AC SEC. TF0005

FUSE, 15A F0097

FUSE, 15A F0097

RELAY R0197

RELAY R0197

FUSE, 1.0A F0417

FUSE, 1.0A F0417

RELAY R0196

RELAY R0196

BLOWER, 120V/AC AB19310900

BLOWER, 120V/AC AB19310900

PUMP MOTOR, 120V M0121

PUMP MOTOR, 120V M0121

WH LIFT ACTUATOR M0113

WH LIFT ACTUATOR M0113

IGNITION TRANSFORMER 6041095

IGNITION TRANSFORMER 6041095

3-PIN CAPI/PLUG CONNECTOR

3-PIN CAPI/PLUG CONNECTOR

FUSE, 1.0A F0417

FUSE, 1.0A F0417

IGNITER X0511

IGNITER X0511

FLAME

FLAME

IGNITION MODULE 7020217

IGNITION MODULE 7020217

GAS VALVE (NOT SHOWN) 7020204

GAS VALVE (NOT SHOWN) 7020204

AIR PRESSURE SWITCH S0097

AIR PRESSURE SWITCH S0097

TRANSFORMER, 120VAC PRIMARY, 230VAC SEC. TF0504

TRANSFORMER, 120VAC PRIMARY, 230VAC SEC. TF0504

3-PIN CAPI/PLUG CONNECTOR

3-PIN CAPI/PLUG CONNECTOR

IGNITION TRANSFORMER 6041095

IGNITION TRANSFORMER 6041095

3-PIN CAPI/PLUG CONNECTOR

3-PIN CAPI/PLUG CONNECTOR

LEGEND

4-CONDUCTOR NUT

RTD ASSY. T0184

RTD ASSY. T0184

TRANSFMR, 120V/AC 24V/AC SEC. TF0005

TRANSFMR, 120V/AC 24V/AC SEC. TF0005

FUSE, 15A F0097

FUSE, 15A F0097

RELAY R0197

RELAY R0197

FUSE, 1.0A F0417

FUSE, 1.0A F0417

RELAY R0196

RELAY R0196

BLOWER, 120V/AC AB19310900

BLOWER, 120V/AC AB19310900

PUMP MOTOR, 120V M0121

PUMP MOTOR, 120V M0121

WH LIFT ACTUATOR M0113

WH LIFT ACTUATOR M0113

IGNITION TRANSFORMER 6041095

IGNITION TRANSFORMER 6041095

3-PIN CAPI/PLUG CONNECTOR

3-PIN CAPI/PLUG CONNECTOR

FUSE, 1.0A F0417

FUSE, 1.0A F0417

IGNITER X0511

IGNITER X0511

FLAME

FLAME

IGNITION MODULE 7020217

IGNITION MODULE 7020217

GAS VALVE (NOT SHOWN) 7020204

GAS VALVE (NOT SHOWN) 7020204

AIR PRESSURE SWITCH S0097

AIR PRESSURE SWITCH S0097

TRANSFORMER, 120VAC PRIMARY, 230VAC SEC. TF0504

TRANSFORMER, 120VAC PRIMARY, 230VAC SEC. TF0504

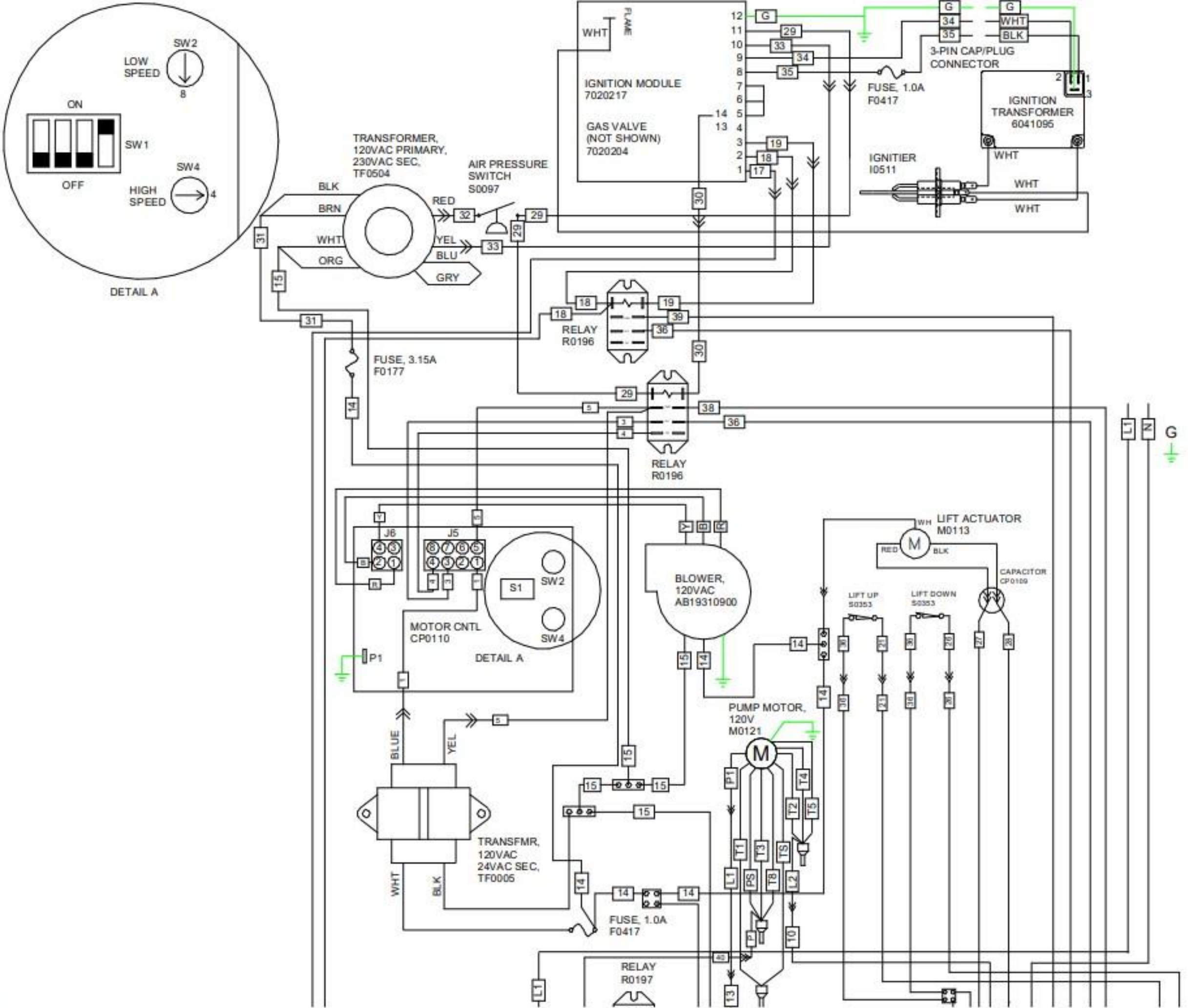
3-PIN CAPI/PLUG CONNECTOR

3-PIN CAPI/PLUG CONNECTOR

IGNITION TRANSFORMER 6041095

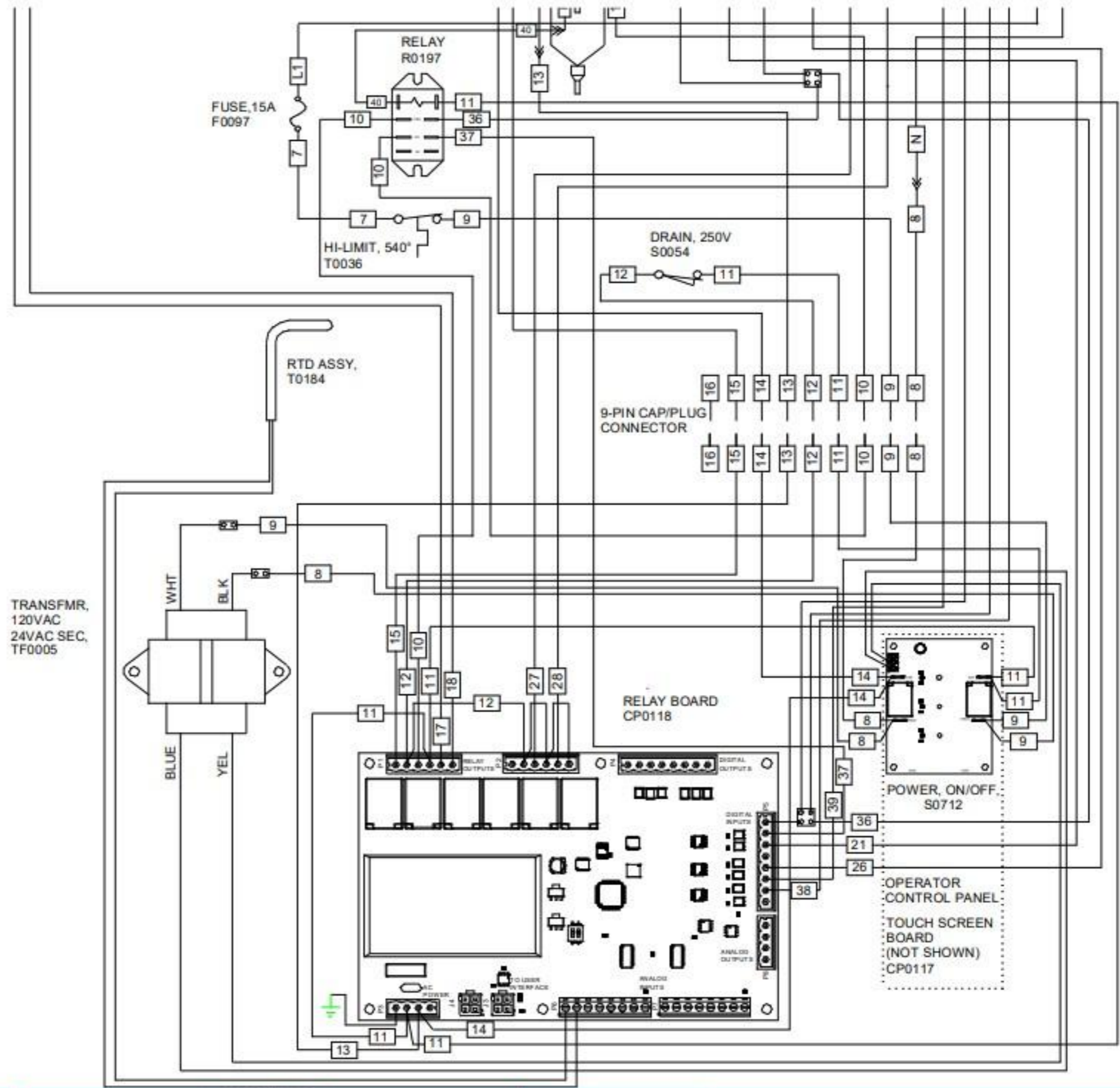
IGNITION TRANSFORMER 6041095

3-PIN CAPI/PLUG CONNECTOR



Continued next page

Continued from previous page



LEGEND

  
4-CONDUCTOR  
NUT

|                            |                          |                       |                     |                         |                           |
|----------------------------|--------------------------|-----------------------|---------------------|-------------------------|---------------------------|
| MODEL No.<br><b>BLG-TC</b> |                          | VOLTAGE<br><b>120</b> | AMPS.<br><b>5.0</b> | KILOWATTS<br><b>0.6</b> | BREAKER SIZE<br><b>15</b> |
| PHASE<br><b>1</b>          | No. OF WIRES<br><b>3</b> |                       |                     |                         |                           |
| DRAWN BY<br><b>JDS</b>     | DATE<br><b>06/29/17</b>  |                       |                     |                         |                           |



|                        |          |          |                 |
|------------------------|----------|----------|-----------------|
| REV. No.               | TYPE     | SIZE     | DRAWING No.     |
| <b>02 - ECO 18-009</b> | <b>S</b> | <b>B</b> | <b>16290300</b> |