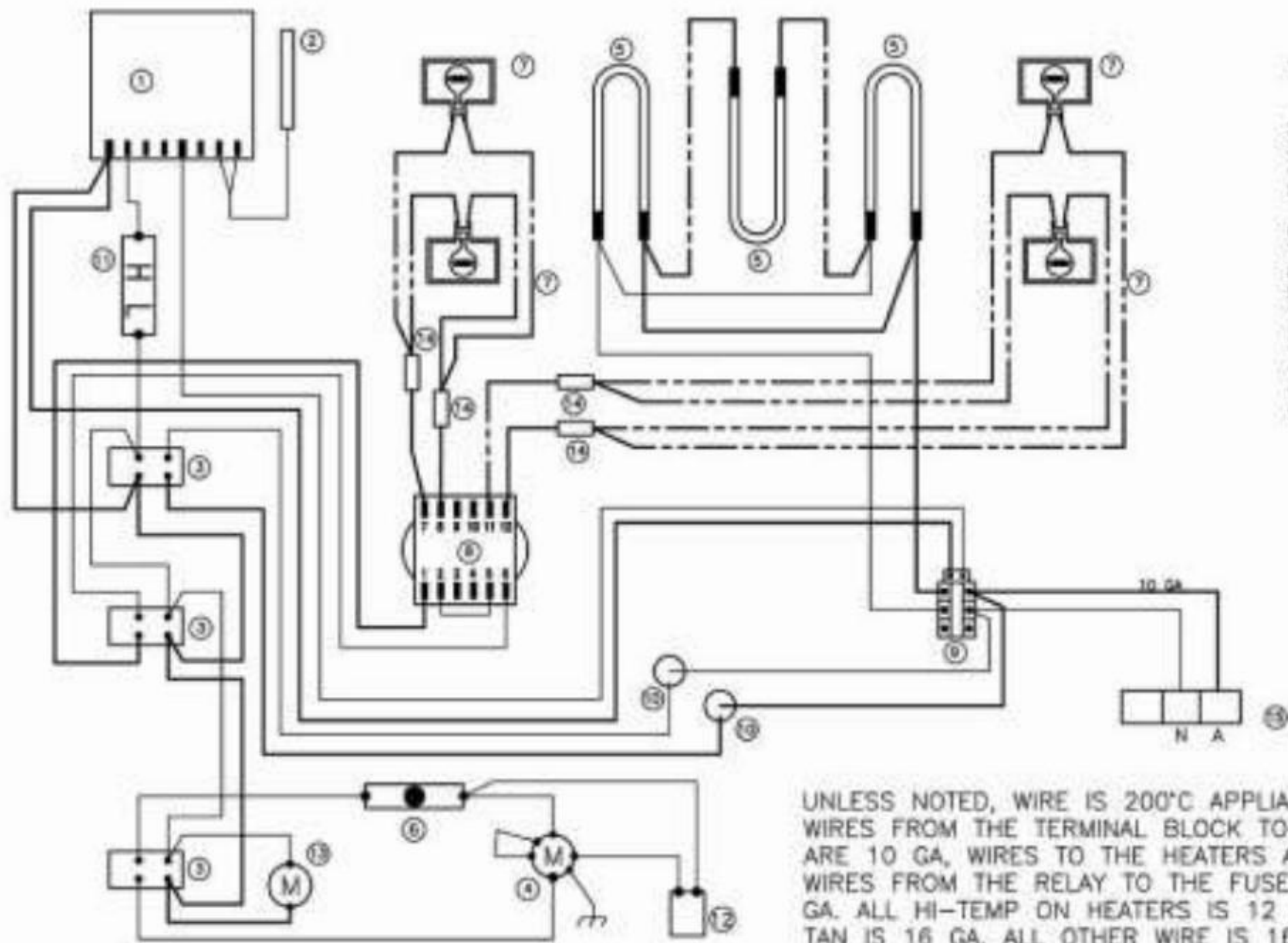


CONSULT UNIT RATING TAG PRIOR TO ELECTRICAL CONNECTION

APPROVED BY	DATE	MODEL No.	VOLTAGE	PHASE	No. OF WIRES	AMPS	KILOWATTS	BREAKER SIZE	REV. No.	TYPE/DATE DRAWING No.
ADM	9/5/02	DR34	240/415	1	2	25.9	6.2	35	[1] 03-134 7/28/03	S, B, 951908
ADM	9/5/02	DR34	220/380	1	2	31.5	6.9	40		

Figure 16. 240/415V, 220/380V, 1 Phase (Sheet 2 of 2)



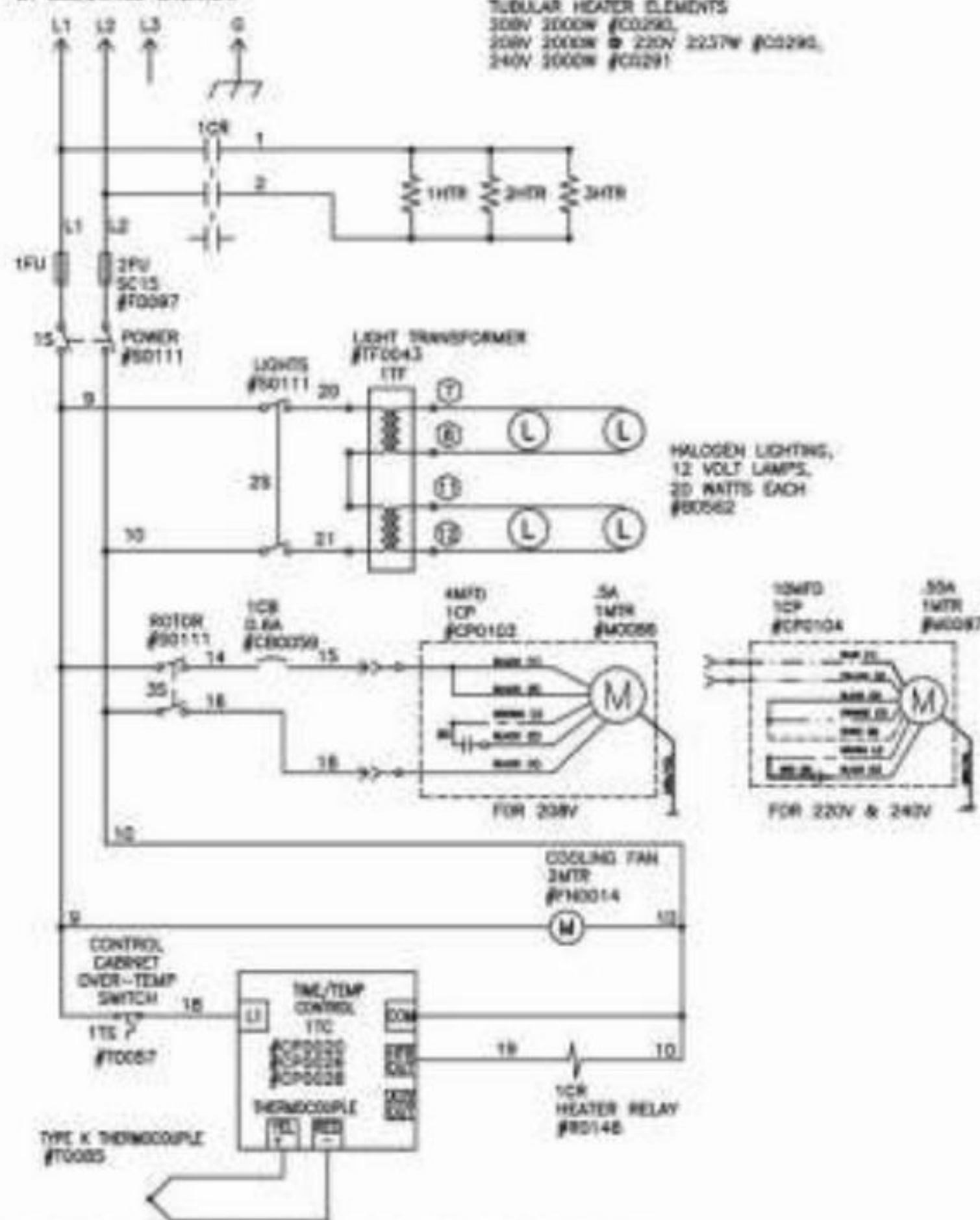
1. THERMOSTAT - CPO020  
THERMOSTAT °C - CPO026  
THERMOSTAT 300° - CPO028
2. TEMPERATURE PROBE - TO085
3. SWITCH - S0111
4. MOTOR 220V, 240V - MO087
5. ELEMENT - 208V 2000W Ø220V 2237W - C0290  
ELEMENT - 240V 2000W - C0291
6. BREAKER, 0.6A - CB0059
7. LAMP, 20W - B0562, HOLDER - LH0024
8. TRANSFORMER - TFO043
9. RELAY - RO148
10. FUSE, 15A - FO097
11. HI-LIMIT - TC057
12. CAPACITOR, 10MFD - CP0104
13. FAN - FN0014
14. CERAMIC SPLICE - F0358
15. TERMINAL BLOCK - TBO081

UNLESS NOTED, WIRE IS 200°C APPLIANCE WIRE, WIRES FROM THE TERMINAL BLOCK TO THE RELAY ARE 10 GA, WIRES TO THE HEATERS ARE 12 GA, WIRES FROM THE RELAY TO THE FUSES ARE 12 GA. ALL HI-TEMP ON HEATERS IS 12 GA, HI-TEMP TAN IS 16 GA. ALL OTHER WIRE IS 16 GA.

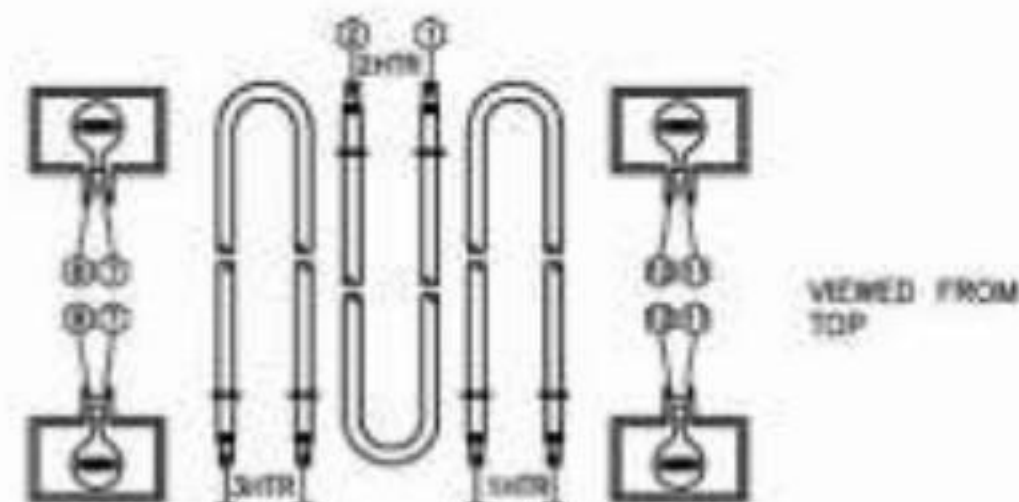
-----	WHITE
-----	GREEN (GND)
-----	BLACK (NEUT)
-----	RED (A)
-----	BLUE (C)
-----	ORANGE
-----	PURPLE
-----	BROWN
-----	YELLOW (B)
-----	GRAY
-----	HI-TEMP

CONNECT TO 208V, 220V OR 240V PER NAMEPLATE. CIRCUIT TO BE PROTECTED BY DESIGNATED BREAKER.

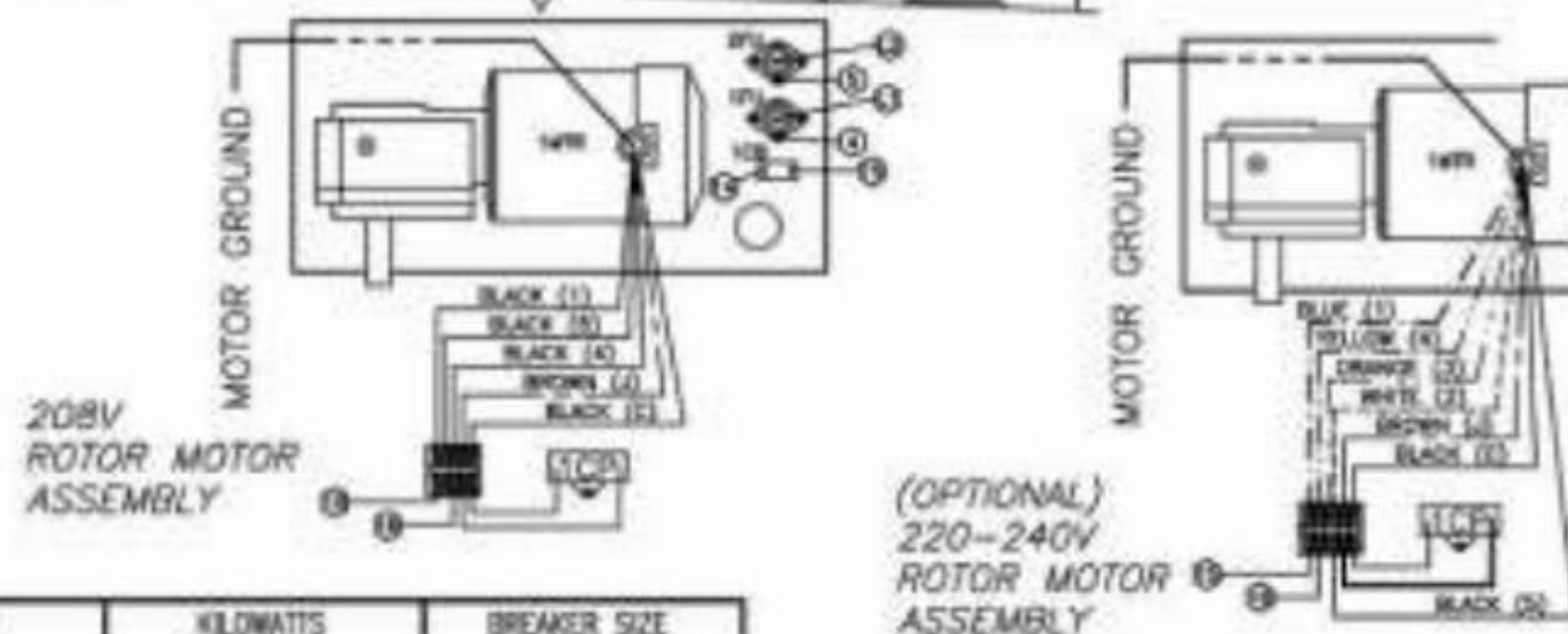
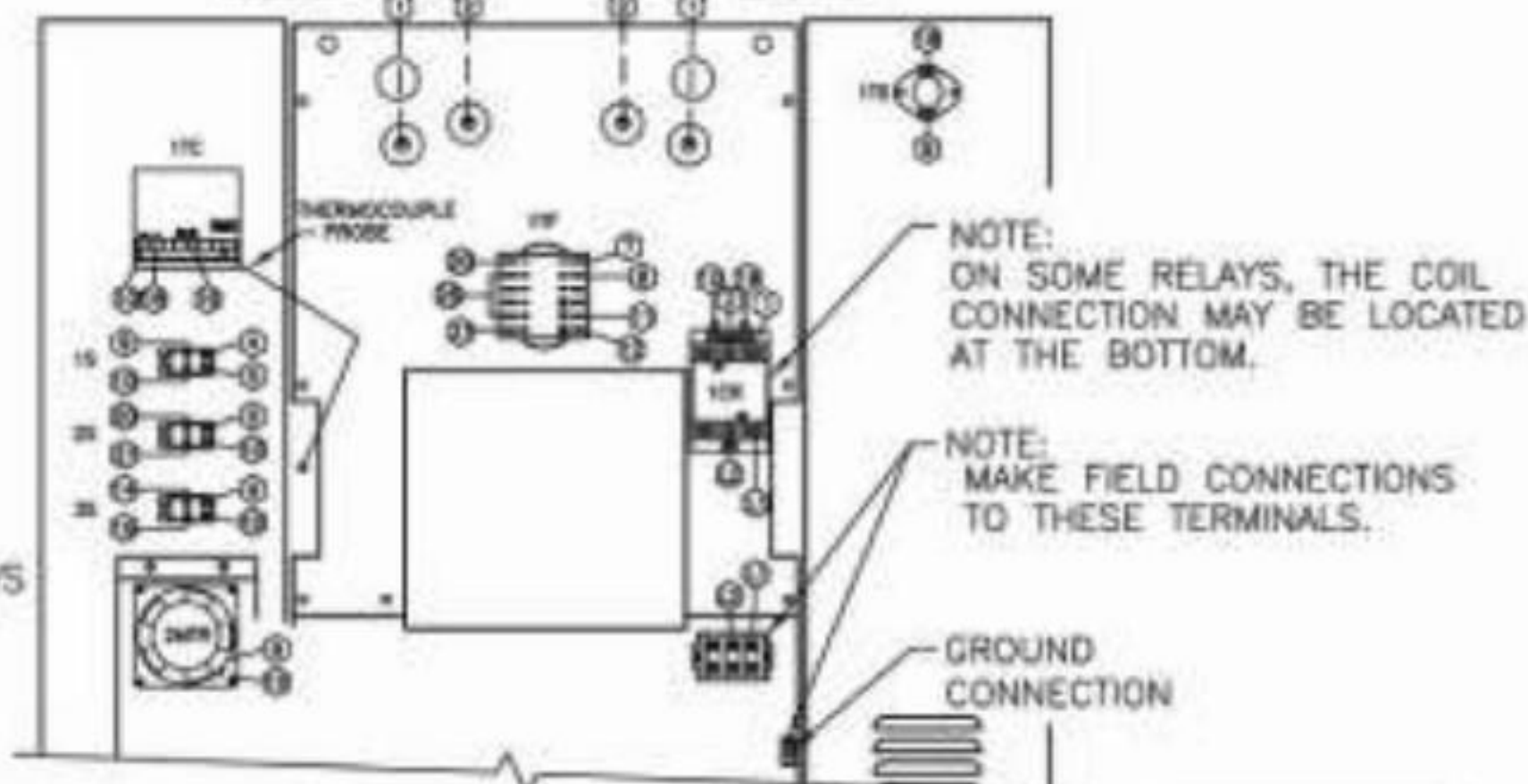
TUBULAR HEATER ELEMENTS  
 208V 3000W #C0290,  
 208V 3000W @ 220V 2237W #C0290,  
 240V 3000W #C0291



OVEN LIGHTS  
 ACCESS THROUGH  
 PANELS ON TOP  
 OF OVEN



NOTE:  
 FAN BLOWS  
 AIR INTO  
 CABINET.



CONSULT UNIT RATING TAG PRIOR TO ELECTRICAL CONNECTION

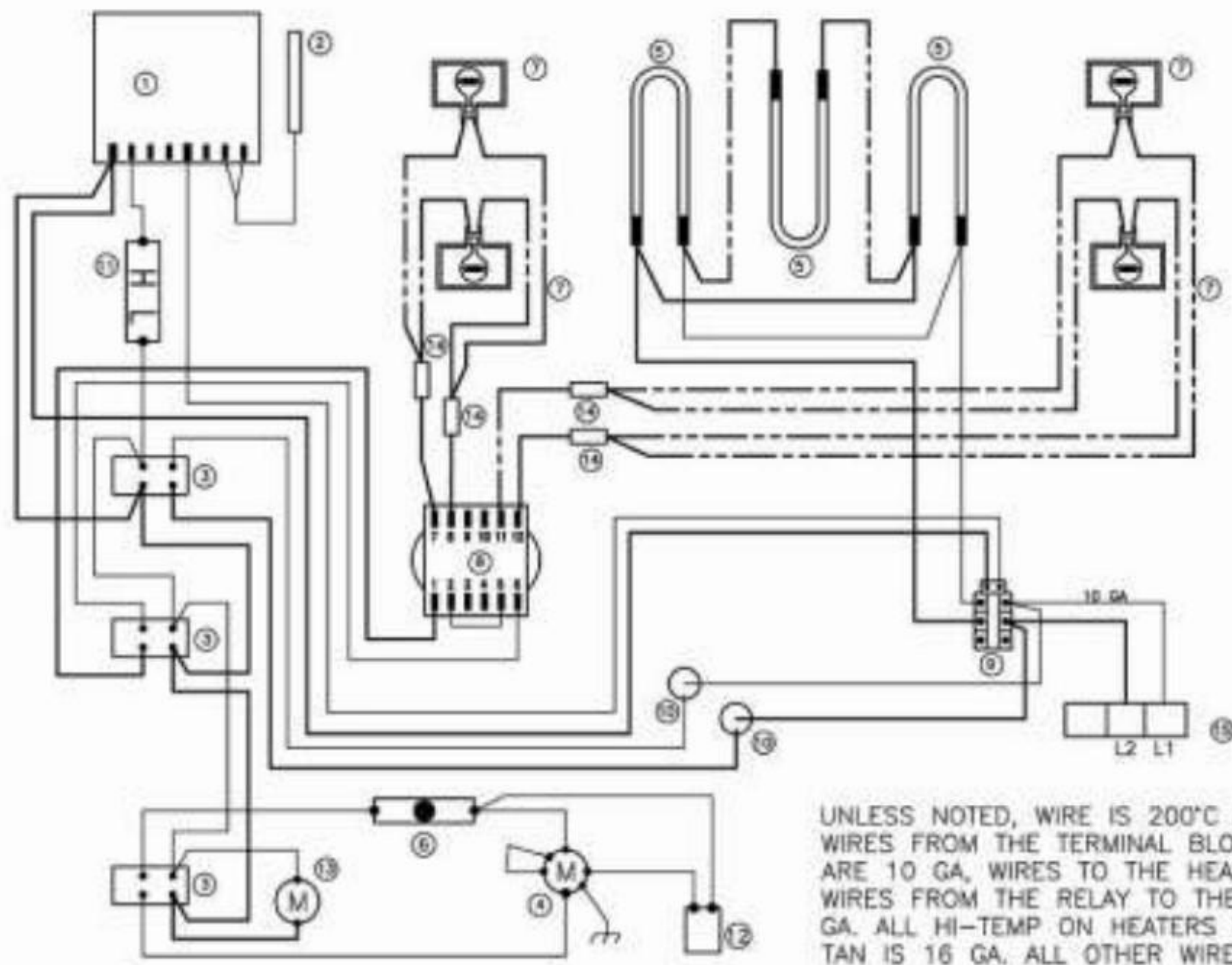
APPROVED BY	DATE	MODEL No.	VOLTAGE	PHASE	No. OF WIRES	AMPS.	KILOWATTS	BREAKER SIZE
ADM	9/5/02	DR34	220	1	2	31.4	6.91	40
ADM	9/5/02	DR34	240	1	2	25.9	6.21	35
ADM	9/5/02	DR34	208	1	2	29.7	6.18	40



SHT 2 OF 2

REV. No. [1] 03-134 7/28/03  
 TYPE SIZE S, B 951906  
 DRAWING No.

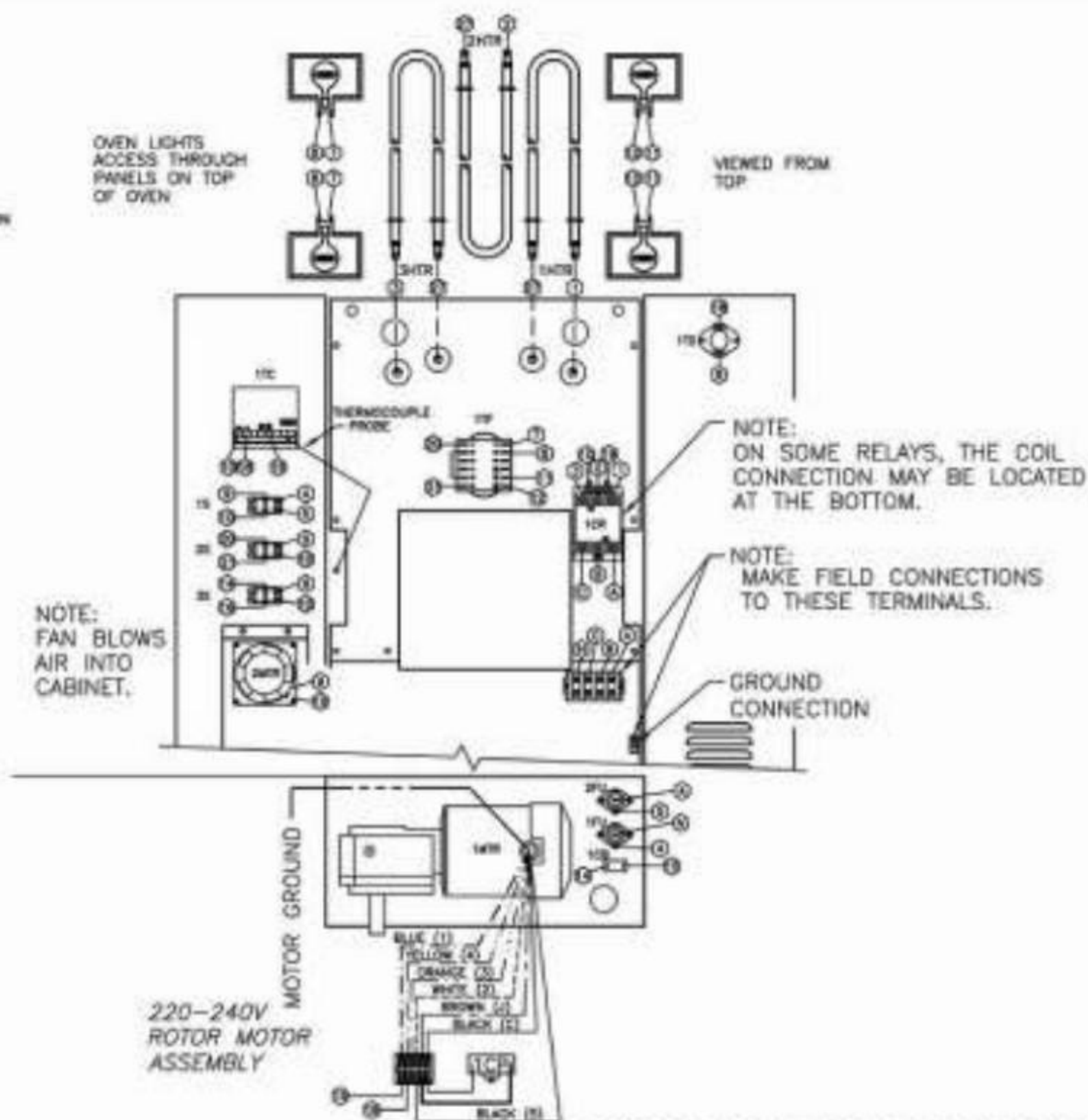
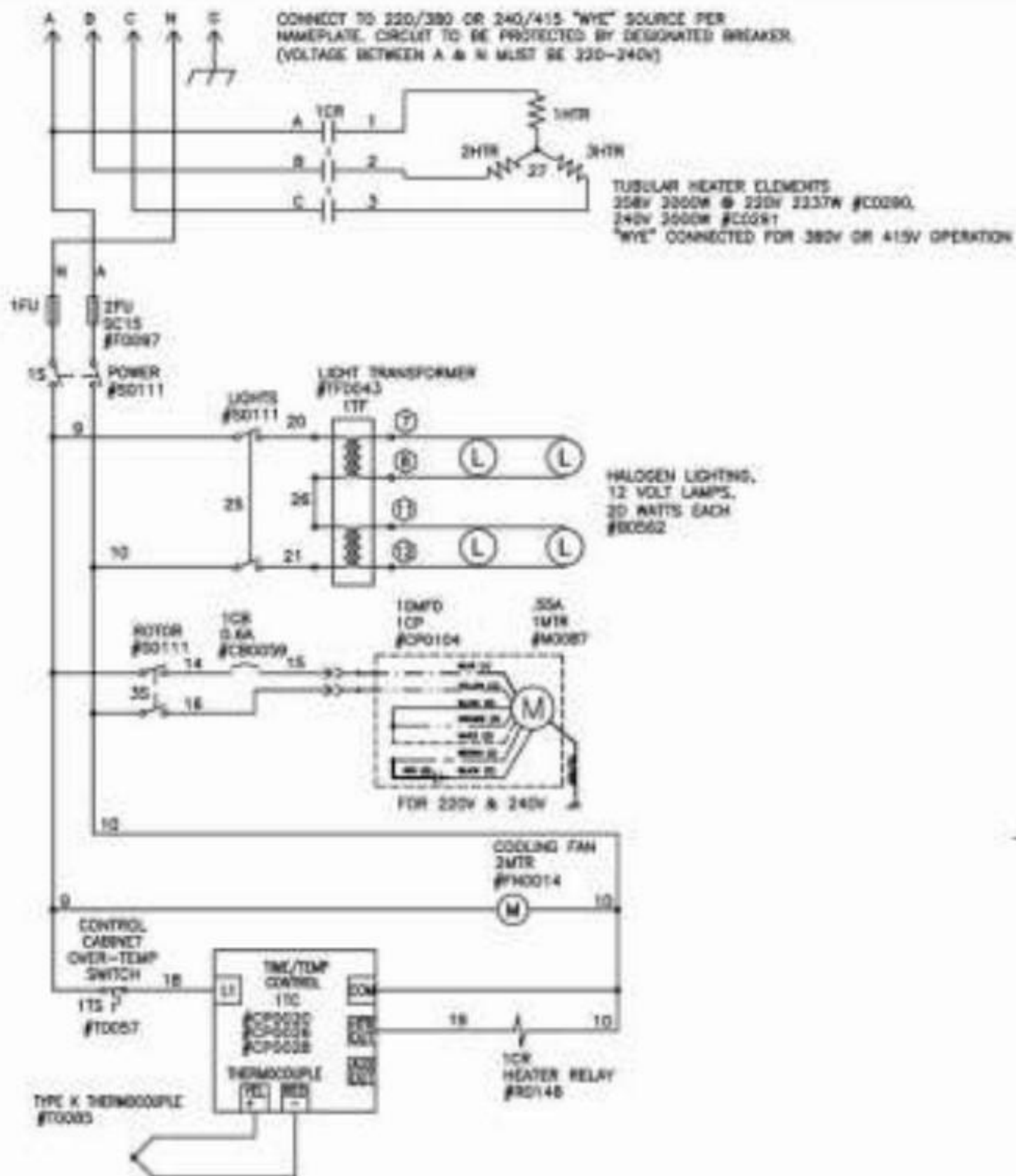
Figure 15. 220V, 240V, 208V, 1 Phase (Sheet 2 of 2)



1. THERMOSTAT - CP0020  
THERMOSTAT °C - CP0026  
THERMOSTAT 300° - CP0028
2. TEMPERATURE PROBE - TC085
3. SWITCH - S0111
4. MOTOR 208V - M0086  
MOTOR 220V, 240V - M0087
5. ELEMENT - 208V 2000W - C0290  
ELEMENT - 208V 2000W @220V 2237W - C0290  
ELEMENT - 240V 2000W - C0291
6. BREAKER, 0.6A - CB0059
7. LAMP, 20W - B0562, HOLDER - LH0024
8. TRANSFORMER - TF0043
9. RELAY - R0148
10. FUSE, 15A - F0097
11. HI-LIMIT - TC057
12. CAPACITOR, 4MFD - CP0103  
CAPACITOR, 10MFD - CP0104
13. FAN - FN0014
14. CERAMIC SPLICE - F0358
15. TERMINAL BLOCK - TB0051

UNLESS NOTED, WIRE IS 200°C APPLIANCE WIRE, WIRES FROM THE TERMINAL BLOCK TO THE RELAY ARE 10 GA, WIRES TO THE HEATERS ARE 12 GA, WIRES FROM THE RELAY TO THE FUSES ARE 12 GA. ALL HI-TEMP ON HEATERS IS 12 GA, HI-TEMP TAN IS 16 GA. ALL OTHER WIRE IS 16 GA.

- WHITE (NEUT.)
- GREEN (GND)
- BLACK (L1)
- RED (L2)
- BLUE (L3)
- ORANGE
- PURPLE
- BROWN
- YELLOW
- GRAY
- HI-TEMP



CONSULT LWT RATING TAG PRIOR TO ELECTRICAL CONNECTION

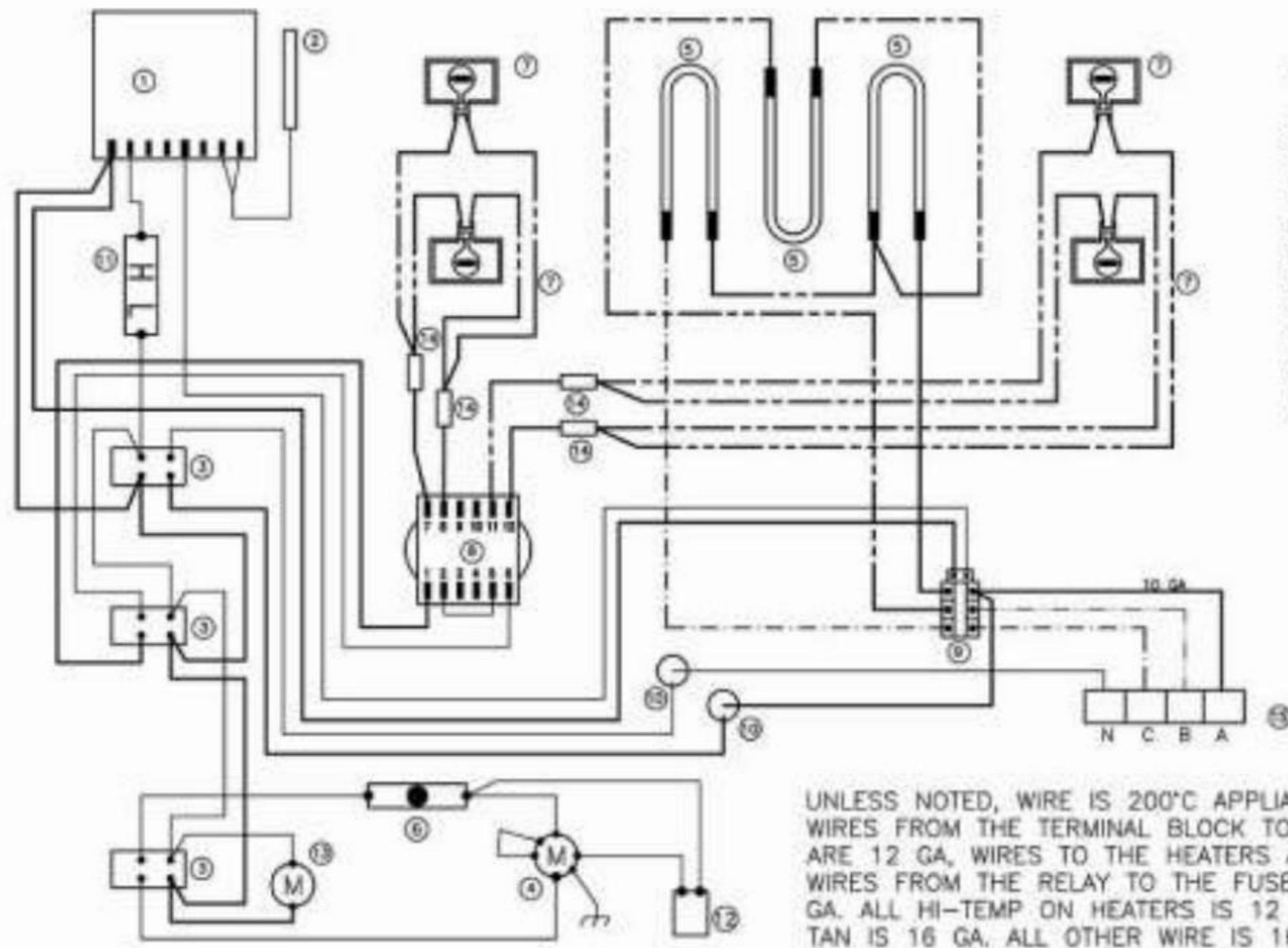
NOTICE:  
THE COMBINATION OF THIS DATA SHEET, DRAWING, AND ASSEMBLY DATA WHICH MAY BE CONTAINED IN THE DRAWING ARE OF A PROPRIETARY NATURE TO BKI. THESE MATERIALS ARE NOT TO BE USED OR COPIED WITHOUT EXPRESS WRITTEN PERMISSION FROM BKI. RIGHTS ARE RESERVED.



REV. No.	TYPE/SIZE	DRAWING No.
[1] 03-134 7/28/03	S, B	951903

Figure 14. 240/415V, 220/380V, 3 Phase (Sheet 2 of 2)

APPROVED BY	DATE	MODEL No.	VOLTAGE	PHASE	No. OF WIRES	AMPS.	KILOWATTS	BREAKER SIZE
ADM	9/4/02	DR34	240/415	3	4	10	6.2	15
APPROVED BY	DATE	MODEL No.	VOLTAGE	PHASE	No. OF WIRES	AMPS.	KILOWATTS	BREAKER SIZE
ADM	9/4/02	DR34	220/380	3	4	12	6.9	15



1. THERMOSTAT - CP0020  
THERMOSTAT °C - CP0026  
THERMOSTAT 300° - CP0028
2. TEMPERATURE PROBE - T0085
3. SWITCH - SD111
4. MOTOR 220V, 240V - M0087
5. ELEMENT - 208V 2000W Ø220V 2237W - C0290  
ELEMENT - 240V 2000W - C0291
6. BREAKER, 0.6A - CB0059
7. LAMP, 20W - B0562, HOLDER - LH0024
8. TRANSFORMER - TF0043
9. RELAY - R0148
10. FUSE, 15A - F0097
11. HI-LIMIT - T0057
12. CAPACITOR, 10MFD - CP0104
13. FAN - FN0014
14. CERAMIC SPLICE - F0358
15. TERMINAL BLOCK - TB0082

UNLESS NOTED, WIRE IS 200°C APPLIANCE WIRE, WIRES FROM THE TERMINAL BLOCK TO THE RELAY ARE 12 GA, WIRES TO THE HEATERS ARE 12 GA, WIRES FROM THE RELAY TO THE FUSES ARE 12 GA. ALL HI-TEMP ON HEATERS IS 12 GA, HI-TEMP TAN IS 16 GA. ALL OTHER WIRE IS 16 GA.

-----	WHITE
-----	GREEN (GND)
-----	BLACK (NEUT)
-----	RED (A)
-----	BLUE (C)
-----	ORANGE
-----	PURPLE
-----	BROWN
-----	YELLOW (B)
-----	GRAY
-----	HI-TEMP



