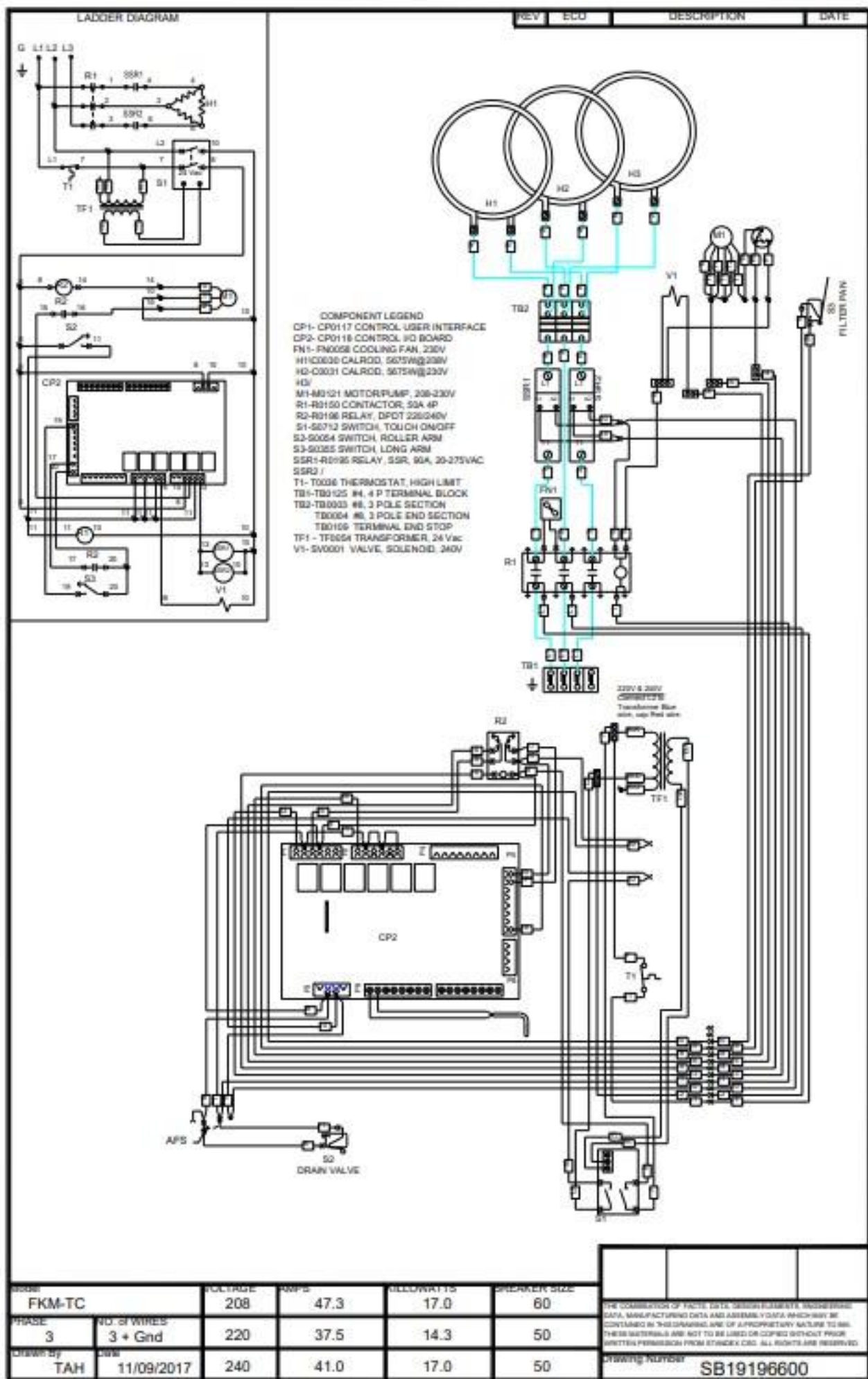
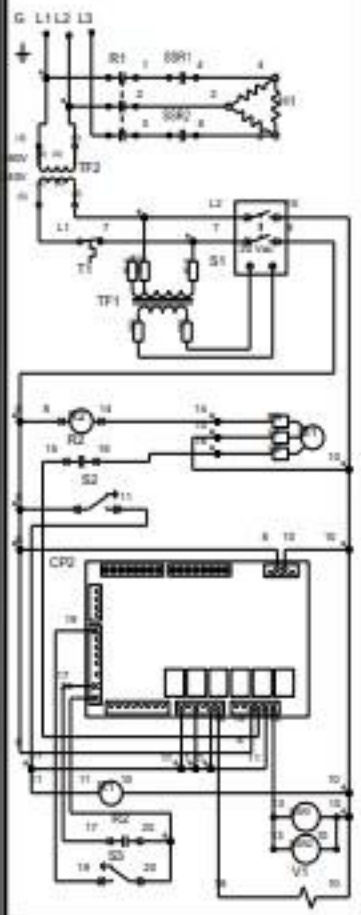


Wiring Diagram

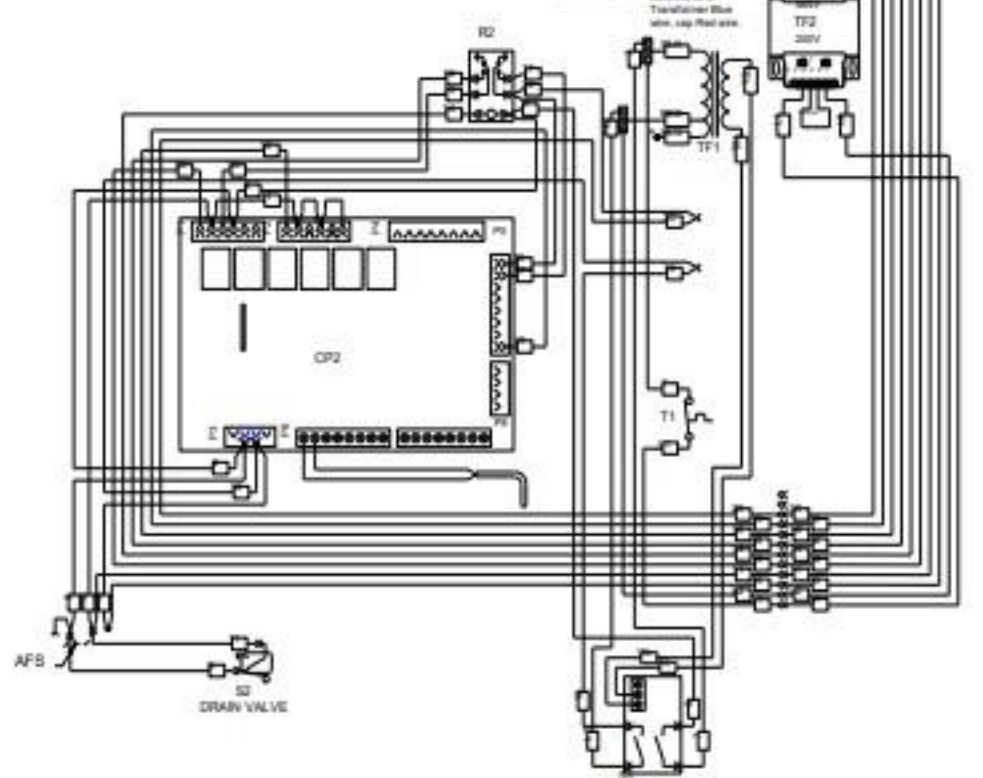
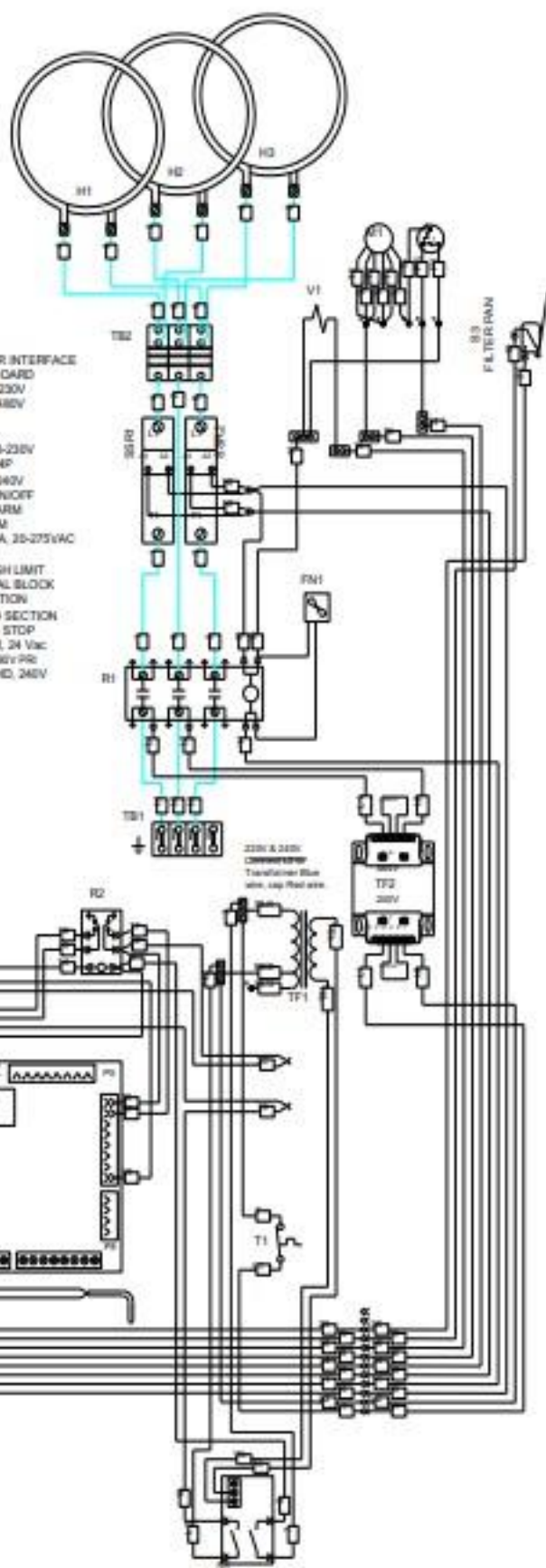


LADDER DIAGRAM



REV	ECO	DESCRIPTION	DATE
01	18-080	PRODUCTION RELEASE	05/16/18

- COMPONENT LEGEND**
- CP1- CP0117 CONTROL USER INTERFACE
 - CP2- CP0118 CONTROL I/O BOARD
 - FN1- FN0558 COOLING FAN, 230V
 - HY03132 CALROD, 5675W@480V
 - HQ-
 - HV-
 - M1-M6121 MOTORPUMP, 208-230V
 - R1-R0150 CONTACTOR, 50A 4P
 - R2-R0196 RELAY, DPDT 230/240V
 - S1-S0712 SWITCH, TOUCH ON/OFF
 - S2-S0054 SWITCH, ROLLER ARM
 - S3-S0355 SWITCH, LONG ARM
 - SSR1-R0195 RELAY, SSR, 90A, 25-275VAC
 - SSR2 |
 - T1- T0036 THERMOSTAT, HIGH LIMIT
 - TB1-TB0125 #4 4 P TERMINAL BLOCK
 - TB2-TB0003 #8 3 POLE SECTION
 - TB0004 #8 3 POLE END SECTION
 - TB0109 TERMINAL END STOP
 - TF1 - TF0254 TRANSFORMER, 24 Vac
 - TF2 - TF0255 TRANSFORMER, 480V PR
 - V1-SV0001 VALVE, SOLENOID, 240V



MODEL	VOLTAGE	AMPS	BELLOWS/TS	BREAKER SIZE
FKM-TC	480	20.5	17.0	
WIRING	3 + Grnd			
DATE	04/26/18			

THE COMBINATION OF FACTS, DATA, DESIGN ELEMENTS, ENGINEERING DATA, MANUFACTURING DATA AND ASSEMBLY DATA ENCOMPASSED BY THIS DRAWING ARE OF A PROPRIETARY NATURE TO BILTRONIC SYSTEMS AND NOT TO BE USED OR COPIED WITHOUT PROPER WRITTEN PERMISSION FROM STANDEX CORP. ALL RIGHTS ARE RESERVED.

Drawing Number: **SB19196700**