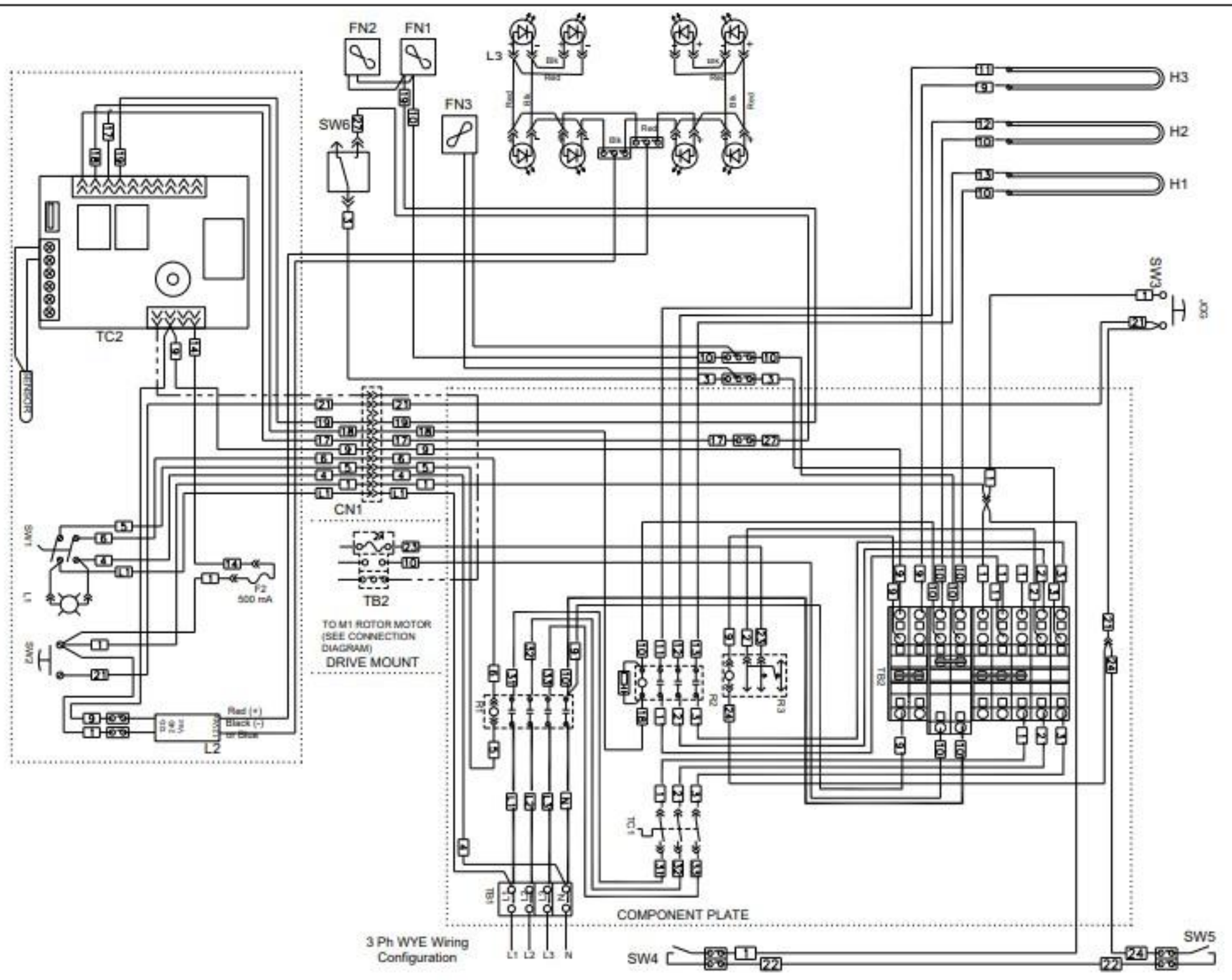
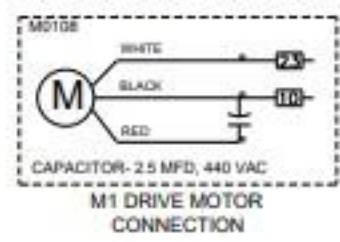
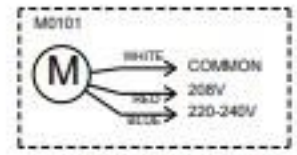


- #### COMPONENT LEGEND
- F1-F0394 FUSE, 8 A
 - F2-FU010UK FUSE, 1/2 A
 - FU004UK FUSE HOLDER
 - FN1-M0101 FAN MOTOR, 208-240V
 - FN2/ FN0032 FAN IMPELLER
 - FN3/
 - FN4- FN0012 COOLING FAN, 230V
 - H1/
 - H2-C0327 CALROD, 1900W@230V
 - H3/
 - L1-L1016UK CLR PILOT LIGHT, 250V
 - L2-LED011 POWER SUPPLY, 12 Vdc
 - L3-EA55097100 LED LAMP
 - M1-AN55015008 GEAR MOTOR, 208-240V
 - R1-R0150 CONTACTOR, 40A 4P
 - R2-R0127 CONTACTOR, 25A 4P
 - RD140 RC SUPPRESSOR
 - R3-R0171 RELAY, SPDT 220/240V
 - SW1/ S0304 2 POS. OPERATOR / S0307 CONTACT BLOCK, 1 N.O.
 - SW2/ S0309 PB OPERATOR
 - SW3/ S0307 CONTACT BLOCK, 1 N.O.
 - SW4- S0363 REED SWITCH, N.O.
 - SW5/
 - SW6- S0355 MICRO SWITCH
 - TB1-TB0125 #4, 4 P TERMINAL BLOCK
 - TB2-TB0003 #8, 3 POLE SECTION
 - TB0004 #8, 3 POLE END SECTION
 - TB0121 JUMPER, #8 x 2 POLE
 - TB0100 #10, 3 POLE SECTION
 - TB0102 #10, 3 POLE END PLATE
 - TB0106 JUMPER, #10 x 2 POLE
 - TB0109 TERMINAL END STOP
 - TC1-TM015UK THERMOSTAT, HI-LIMIT
 - TC2-CP0065 CONTROLLER, TOUCH SCREEN

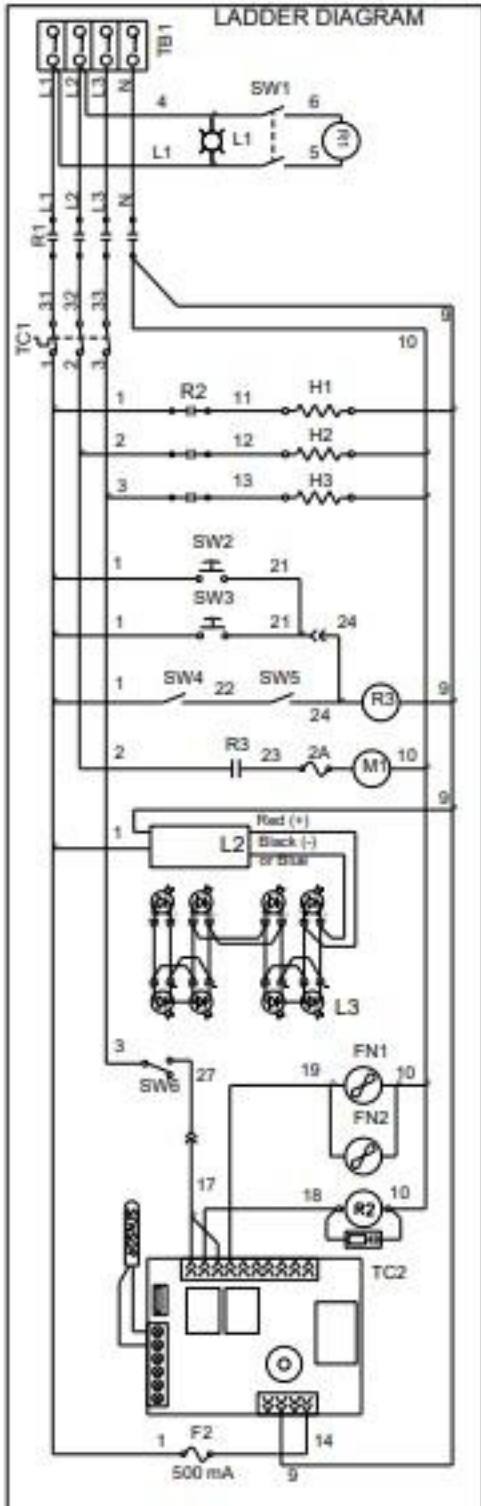


NOTICE: THE COMBINATION OF FACTS, DATA, DESIGN ELEMENTS, ENGINEERING DATA, MANUFACTURING DATA AND ASSEMBLY DATA WHICH MAY BE CONTAINED IN THIS DRAWING ARE OF A PROPRIETARY NATURE TO BKI. THESE MATERIALS ARE NOT TO BE USED OR COPIED WITHOUT PRIOR WRITTEN PERMISSION FROM BKI. ALL RIGHTS ARE RESERVED.		VOLTAGE	AMPS.	KILOWATTS	BREAKER SIZE
PHASE 3+N+E	No. OF WIRES 5	220/380	9.3	5.3	20
		230/400	9.5	6.2	20
		240/415	9.9	6.7	20

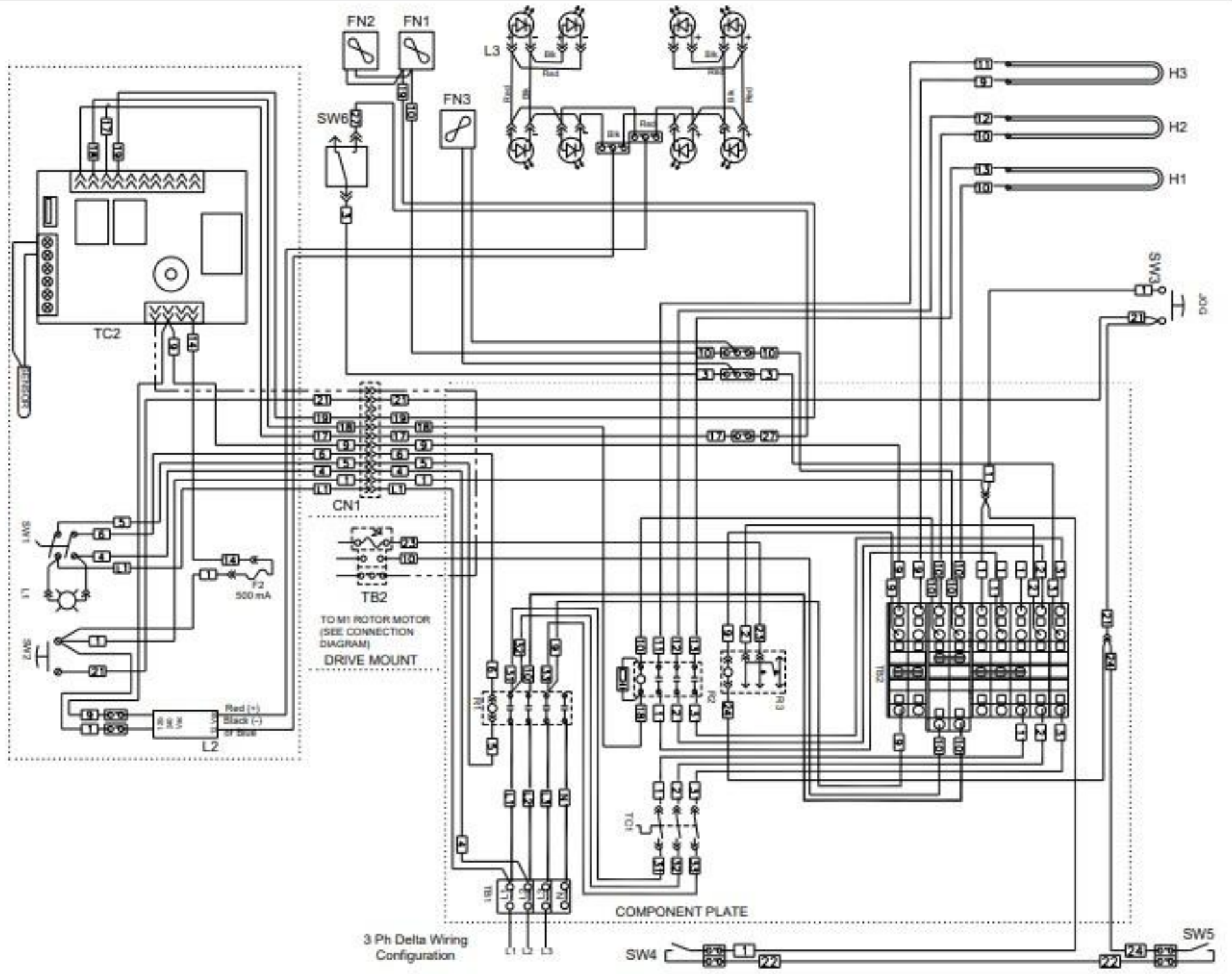
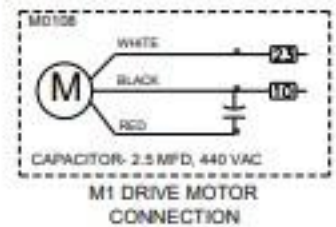
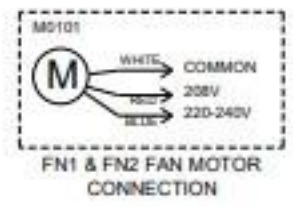


DRAWN BY: TAH
DATE: 8/08/18
MODEL No.: VGG-5, LED Lights

REV. No.:
TYPE: S, B
SIZE: 55092100
DRAWING No.: 55092100



- #### COMPONENT LEGEND
- F1-F0394 FUSE, 8 A
 - F2-FU010UK FUSE, 1/2 A
 - FU004UK FUSE HOLDER
 - FN1/ M0101 FAN MOTOR, 208-240V
 - FN2/ FN0032 FAN IMPELLER
 - FN3/
 - FN4- FN0012 COOLING FAN, 230V
 - H1- C0325 CALROD, 1900W@208V
 - H2-C0327 CALROD, 1900W@230V
 - H3/
 - L1-LJ016UK CLR PILOT LIGHT, 250V
 - L2-LED011 POWER SUPPLY, 12 Vdc
 - L3-EA55097100 LED LAMP
 - M1-AN5501500S GEARMOTOR, 208-240V
 - R1-R0150 CONTACTOR, 40A 4P
 - R2-R0127 CONTACTOR, 25A 4P
 - R0140 RC SUPPRESSOR
 - R3-R0171 RELAY, SPDT 220/240V
 - SW1/ S0304 2 POS. OPERATOR / S0307 CONTACT BLOCK, 1 N.O.
 - SW2/ S0309 PB OPERATOR
 - SW3/ S0307 CONTACT BLOCK, 1 N.O.
 - SW4- S0363 REED SWITCH, N.O.
 - SW5/
 - SW6- S0355 MICRO SWITCH
 - TB1-TB0125 #4, 4 P TERMINAL BLOCK
 - TB2-TB0003 #8, 3 POLE SECTION
 - TB0004 #8, 3 POLE END SECTION
 - TB0121 JUMPER, #8 x 2 POLE
 - TB0100 #10, 3 POLE SECTION
 - TB0102 #10, 3 POLE END PLATE
 - TB0106 JUMPER, #10 x 2 POLE
 - TB0109 TERMINAL END STOP
 - TC1-TM015UK THERMOSTAT, HI-LIMIT
 - TC2-CP0065 CONTROLLER, TOUCH SCREEN



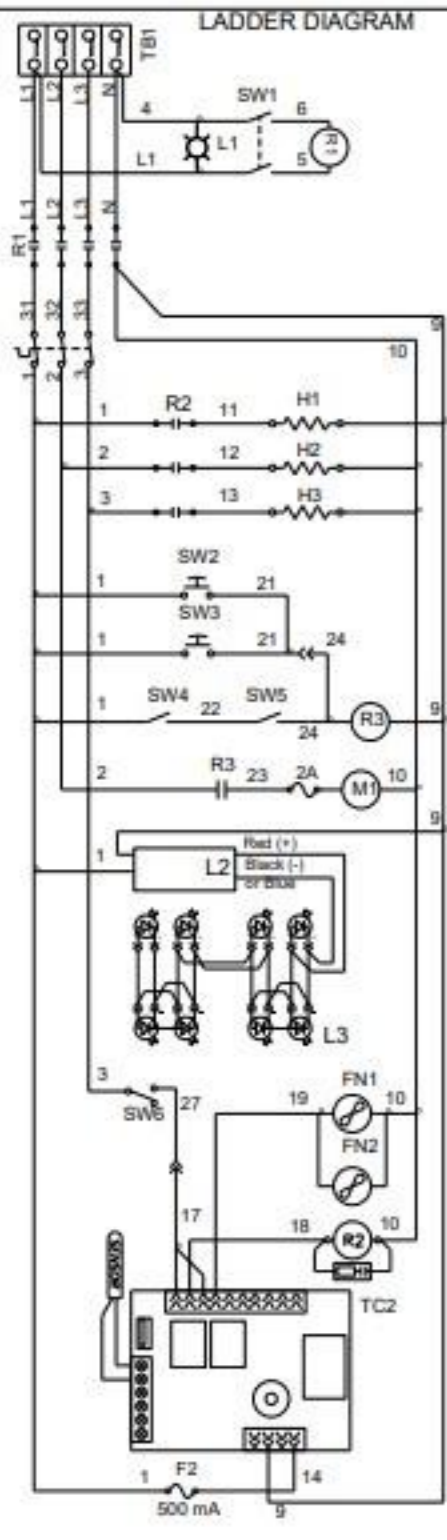
NOTICE:
THE COMBINATION OF FACTS, DATA, DESIGN ELEMENTS, ENGINEERING DATA, MANUFACTURING DATA AND ASSEMBLY DATA WHICH MAY BE CONTAINED IN THIS DRAWING ARE OF A PROPRIETARY NATURE TO BKL. THESE MATERIALS ARE NOT TO BE USED OR COPIED WITHOUT PRIOR WRITTEN PERMISSION FROM BKL. ALL RIGHTS ARE RESERVED.

PHASE	No. OF WIRES
3	4

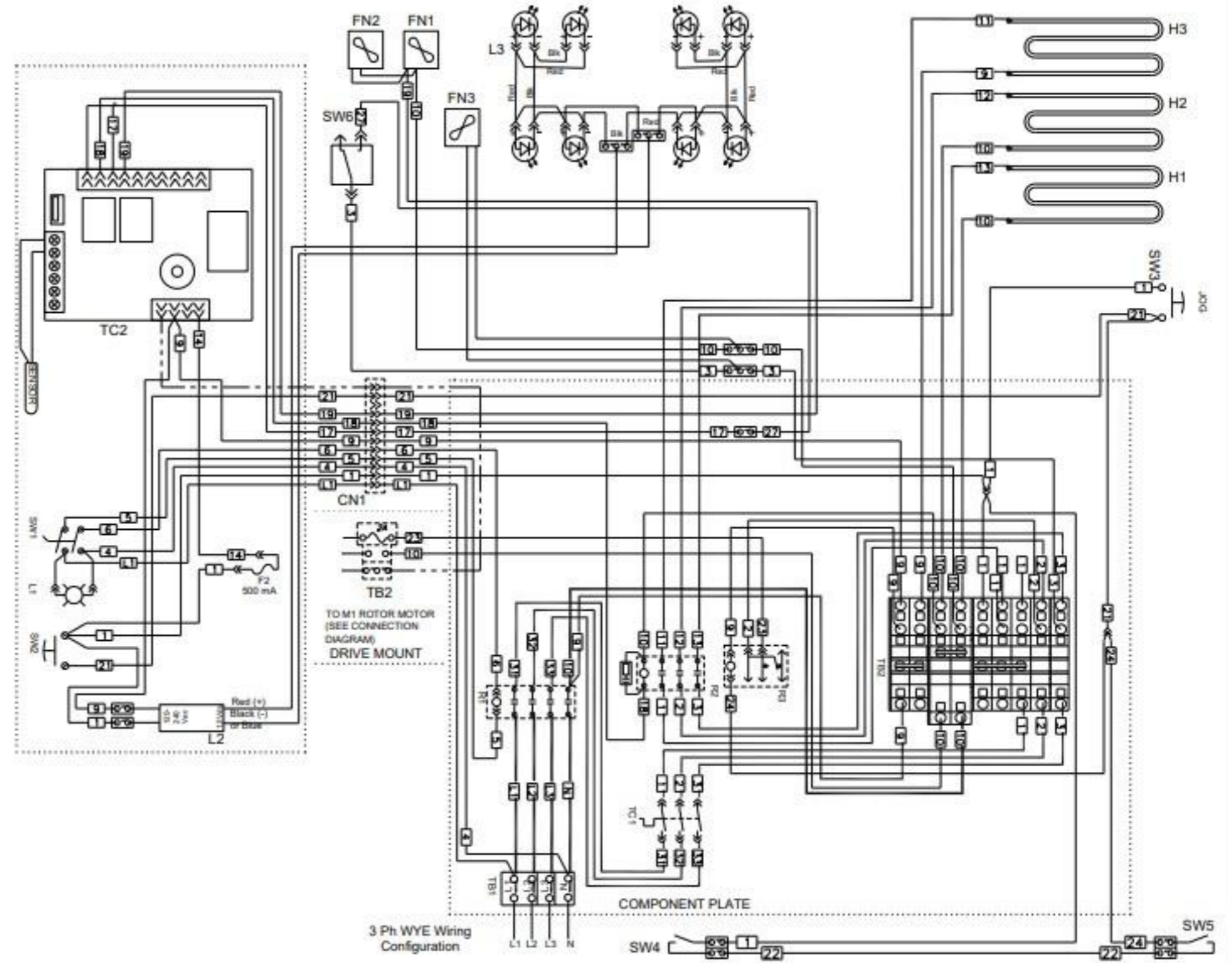
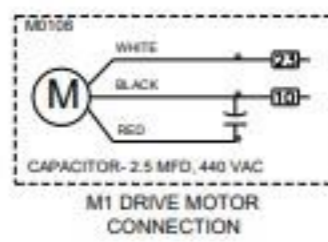
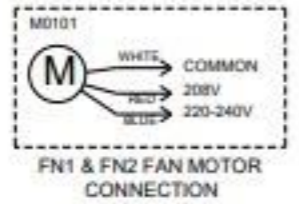
VOLTAGE	AMPS.	KILOWATTS	BREAKER SIZE
208	17.9	6.2	30
220	15.6	5.7	20
240	16.7	6.7	40

REV. No.	TYPE/SIZE	DRAWING No.
	S, B	55092000

DRAWN BY	DATE	MODEL No.
TAH	8/08/18	VGG-5, LED Lights



- COMPONENT LEGEND**
- F1-F0394 FUSE, 8 A
 - F2-FU010UK FUSE, 1/2 A
 - FU004UK FUSE HOLDER
 - FN1/ M0101 FAN MOTOR, 208-240V
 - FN2/ FN0032 FAN IMPELLER
 - FN3/
 - FN4- FN0012 COOLING FAN, 230V
 - H1/
 - H2-C0326 CALROD, 3800W@230V
 - H3/
 - L1-L1016UK CLR PILOT LIGHT, 250V
 - L2-LED011 POWER SUPPLY, 12 Vdc
 - L3-EA55097100 LED LAMP
 - M1-AN5501500S GEARMOTOR, 208-240V
 - R1-R0150 CONTACTOR, 40A 4P
 - R2-R0127 CONTACTOR, 25A 4P
 - R0140 RC SUPPRESSOR
 - R3-R0171 RELAY, SPDT 220/240V
 - SW1/ S0304 2 POS. OPERATOR / S0307 CONTACT BLOCK, 1 N.O.
 - SW2/ S0309 PB OPERATOR
 - SW3/ S0307 CONTACT BLOCK, 1 N.O.
 - SW4- S0363 REED SWITCH, N.O.
 - SW5/
 - SW6- S0355 MICRO SWITCH
 - TB1-TB0125 #4, 4 P TERMINAL BLOCK
 - TB2-TB0003 #8, 3 POLE SECTION
 - TB0004 #8, 3 POLE END SECTION
 - TB0121 JUMPER, #8 x 2 POLE
 - TB0100 #10, 3 POLE SECTION
 - TB0102 #10, 3 POLE END PLATE
 - TB0106 JUMPER, #10 x 2 POLE
 - TB0109 TERMINAL END STOP
 - TC1-TM015UK THERMOSTAT, HI-LIMIT
 - TC2-CP0065 CONTROLLER, TOUCH SCREEN



NOTICE:
THE COMBINATION OF FACTS, DATA, DESIGN ELEMENTS, ENGINEERING DATA, MANUFACTURING DATA AND ASSEMBLY DATA WHICH MAY BE CONTAINED IN THIS DRAWING ARE OF A PROPRIETARY NATURE TO BKI. THESE MATERIALS ARE NOT TO BE USED OR COPIED WITHOUT PRIOR WRITTEN PERMISSION FROM BKI. ALL RIGHTS ARE RESERVED.

VOLTAGE	AMPS.	KILOWATTS	BREAKER SIZE
220/380	17.2	10.9	30
230/400	17.8	11.9	30
240/415	18.5	12.9	30

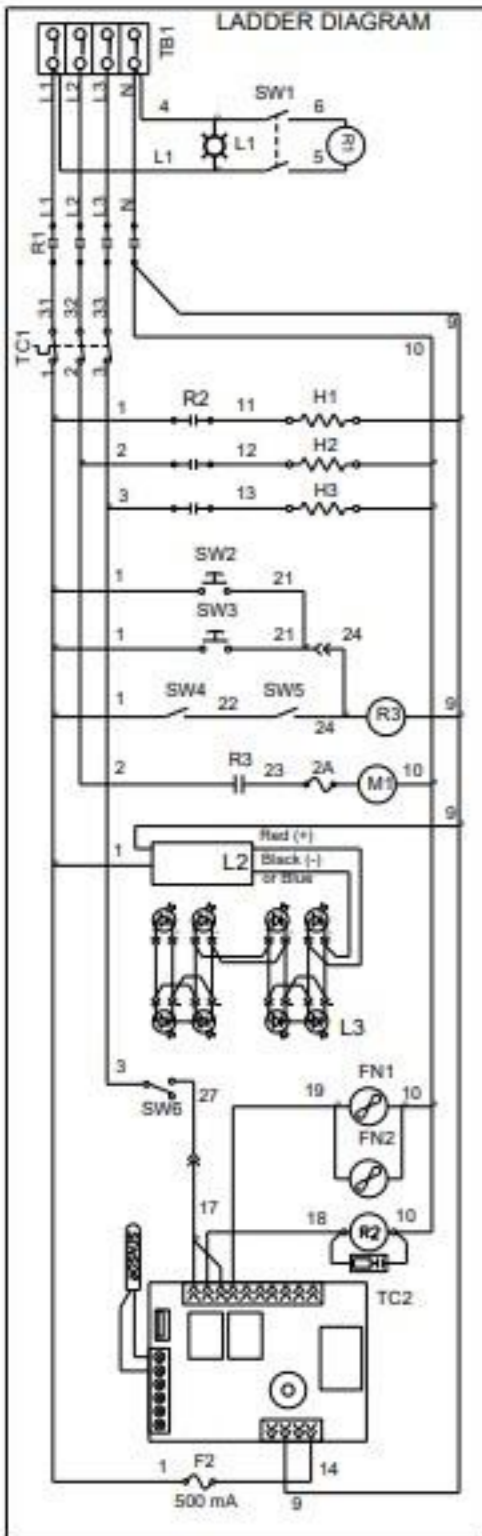
DRAWN BY	DATE	MODEL No.
TAH	8/08/18	VGG-8, LED Lights, High Wattage

PHASE	No. OF WIRES
3+N+E	5

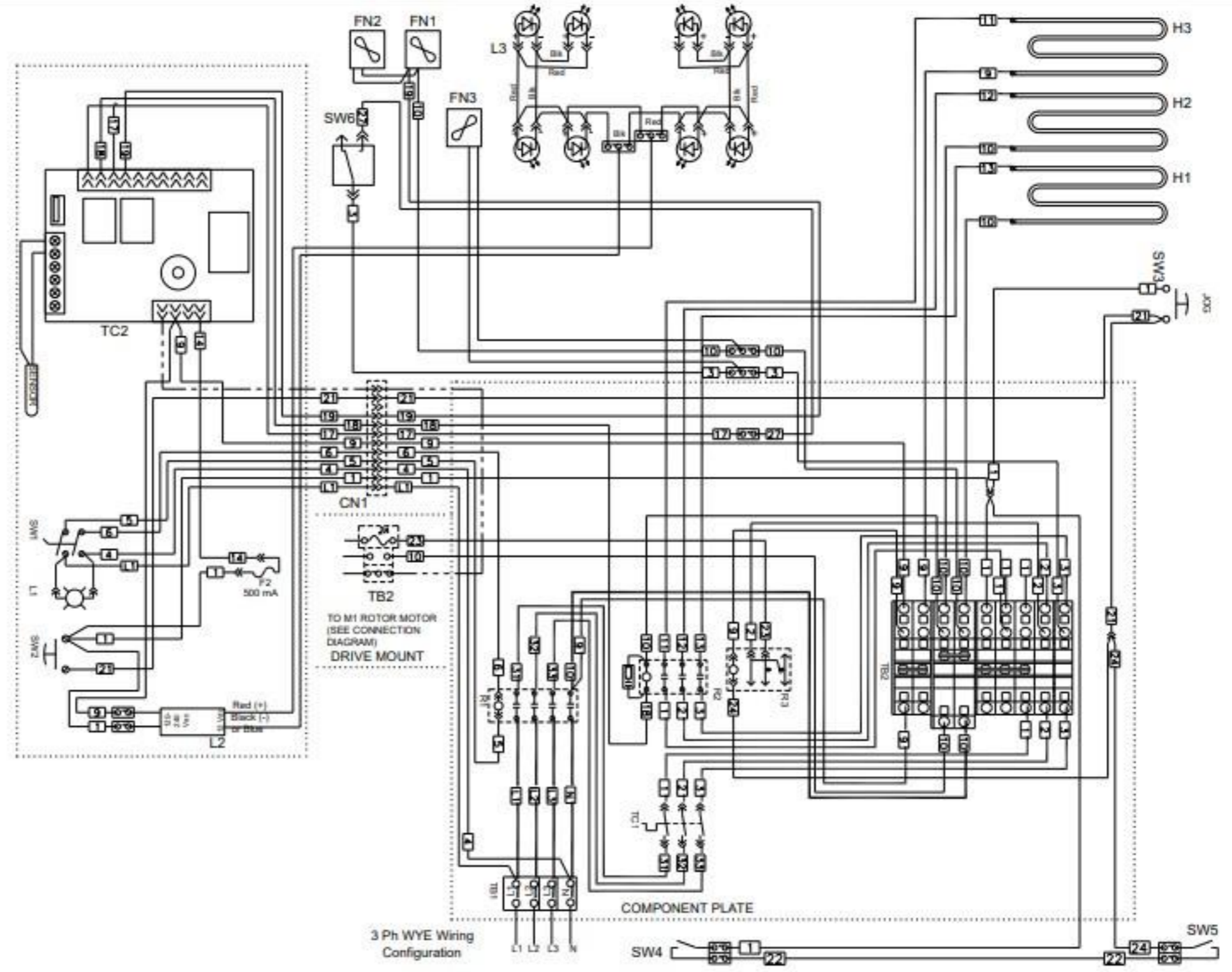
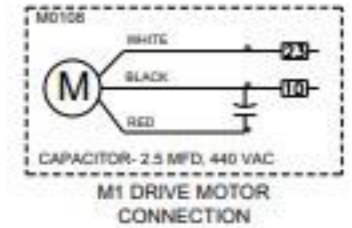
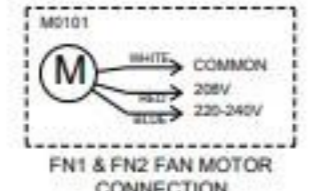
REV. No.

BKI 

TYPE/SIZE DRAWING No.
S, B 55090300



- #### COMPONENT LEGEND
- F1-F0394 FUSE, 8 A
 - F2-FU010UK FUSE, 1/2 A
 - FU004UK FUSE HOLDER
 - FN1- M0101 FAN MOTOR, 208-240V
 - FN2/ FN0032 FAN IMPELLER
 - FN3-
 - FN4- FN0012 COOLING FAN, 230V
 - H1-
 - H2-C0322 CALROD, 3400W@230V
 - H3-
 - L1-L1018UK CLR PILOT LIGHT, 250V
 - L2-LED011 POWER SUPPLY, 12 Vdc
 - L3-EA55097100 LED LAMP
 - M1-AN5501500S GEARMOTOR, 208-240V
 - R1-R0150 CONTACTOR, 40A 4P
 - R2-R0127 CONTACTOR, 25A 4P
 - R0140 RC SUPPRESSOR
 - R3-R0171 RELAY, SPDT 220/240V
 - SW1- S0304 2 POS. OPERATOR / S0307 CONTACT BLOCK, 1 N.O.
 - SW2- S0309 PB OPERATOR
 - SW3- S0307 CONTACT BLOCK, 1 N.O.
 - SW4- S0363 REED SWITCH, N.O.
 - SW5-
 - SW6- S0355 MICRO SWITCH
 - TB1-TB0125 #4, 4 P TERMINAL BLOCK
 - TB2-TB0003 #8, 3 POLE SECTION
 - TB0004 #8, 3 POLE END SECTION
 - TB0121 JUMPER, #8 x 2 POLE
 - TB0100 #10, 3 POLE SECTION
 - TB0102 #10, 3 POLE END PLATE
 - TB0106 JUMPER, #10 x 2 POLE
 - TB0109 TERMINAL END STOP
 - TC1-TM015UK THERMOSTAT, HI-LIMIT
 - TC2-CP0065 CONTROLLER, TOUCH SCREEN



NOTICE:
 THE COMBINATION OF FACTS, DATA, DESIGN ELEMENTS, ENGINEERING DATA, MANUFACTURING DATA AND ASSEMBLY DATA WHICH MAY BE CONTAINED IN THIS DRAWING ARE OF A PROPRIETARY NATURE TO BKI. THESE MATERIALS ARE NOT TO BE USED OR COPIED WITHOUT PRIOR WRITTEN PERMISSION FROM BKI. ALL RIGHTS ARE RESERVED.

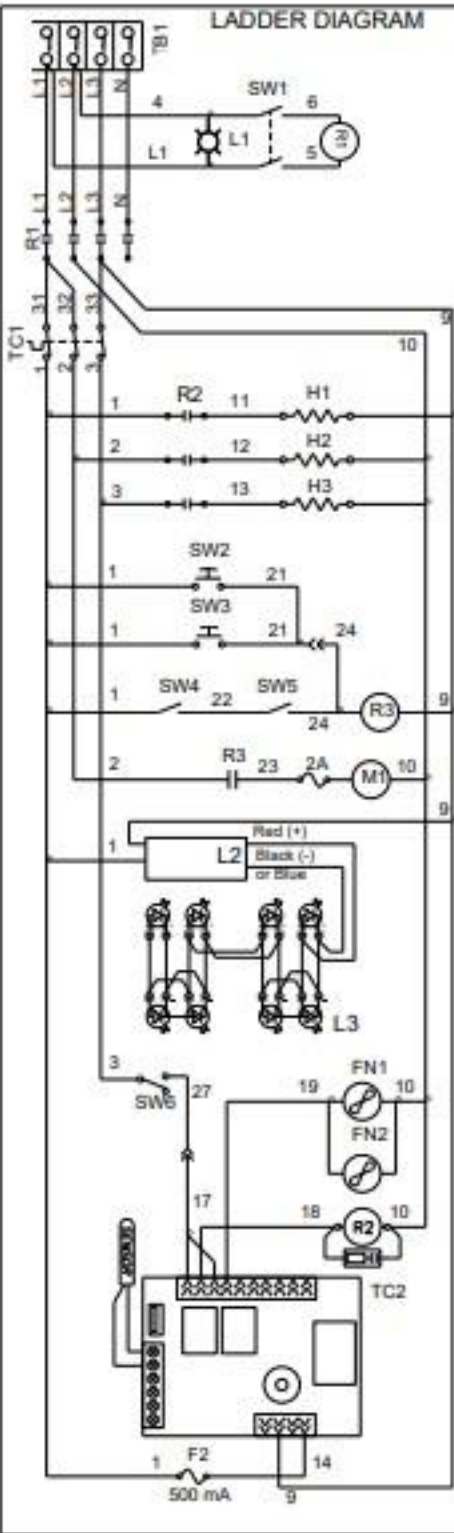
VOLTAGE	AMPS.	KILOWATTS	BREAKER SIZE
220/380	15.6	9.8	20
230/400	16.0	10.7	20
240/415	16.7	11.6	30



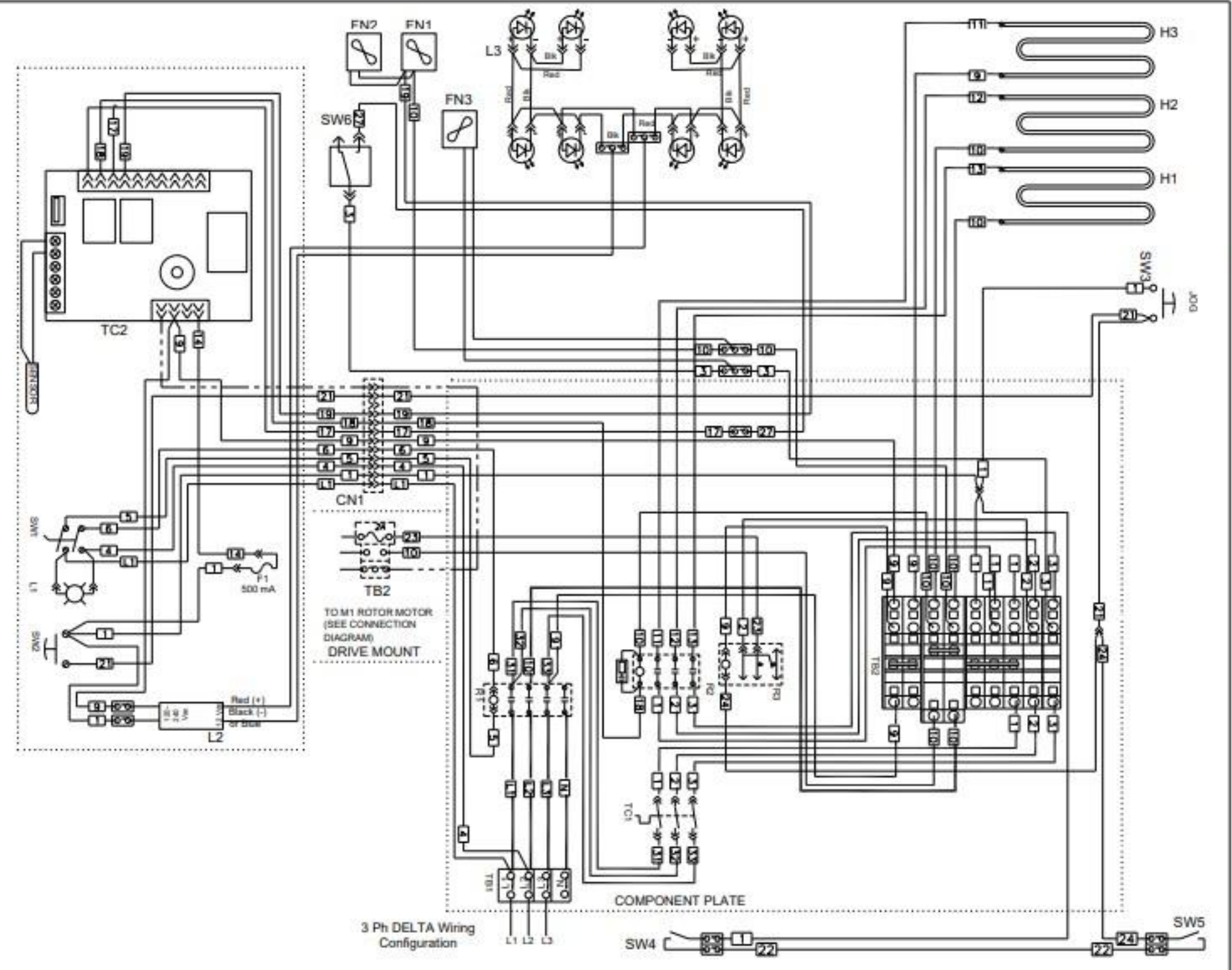
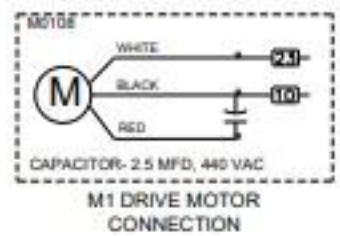
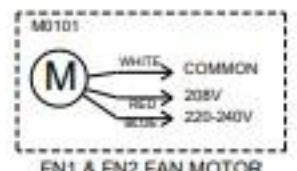
DRAWN BY	DATE	MODEL No.
TAH	8/08/18	VGG-8, LED Lights, Std Wattage

PHASE	No. OF WIRES
3+N+E	5

REV. No.	TYPE SIZE DRAWING No.
	S, B, 55090200



- #### COMPONENT LEGEND
- F1-FU016UK FUCC, 1/2 A
 - FU004UK FUSE HOLDER
 - FN1/ M0101 FAN MOTOR, 208-240V
 - FN2/ FN0032 FAN IMPELLER
 - FN3/
 - FN4- FN0012 COOLING FAN, 230V
 - H1/C0323 CALROD, 4060W@208V
 - H2-C0326 CALROD, 3800W@230V
 - H3/
 - L1-L1016UK CLR PILOT LIGHT, 250V
 - L2-LED011 POWER SUPPLY, 12 Vdc
 - L3-EA55097100 LED LAMP
 - M1-AN5501500S GEARMOTOR, 208-240V
 - R1-R0150 CONTACTOR, 40A 4P
 - R2-R0127 CONTACTOR, 25A 4P
 - R0140 RC SUPPRESSOR
 - R3-R0171 RELAY, SPDT 220/240V
 - SW1/ S0304 2 POS. OPERATOR
 - / S0307 CONTACT BLOCK, 1 N.O.
 - SW2/ S0309 PS OPERATOR
 - SW3/ S0307 CONTACT BLOCK, 1 N.O.
 - SW4- S0363 REED SWITCH, N.O.
 - SW5/
 - SW6- S0355 MICRO SWITCH
 - TB1-TB0125 #4, 4 P TERMINAL BLOCK
 - TB2-TB0003 #8, 3 POLE SECTION
 - TB0004 #8, 3 POLE END SECTION
 - TB0121 JUMPER, #8 x 2 POLE
 - TB0100 #10, 3 POLE SECTION
 - TB0102 #10, 3 POLE END PLATE
 - TB0106 JUMPER, #10 x 2 POLE
 - TB0109 TERMINAL END STOP
 - TC1-TM015UK THERMOSTAT, HI-LIMIT
 - TC2-CP0065 CONTROLLER, TOUCH SCREEN



NOTICE:
THE COMBINATION OF FACTS, DATA, DESIGN ELEMENTS,
ENGINEERING DATA, MANUFACTURING DATA AND
ASSEMBLY DATA WHICH MAY BE CONTAINED IN THIS
DRAWING ARE OF A PROPRIETARY NATURE TO BKI.
THESE MATERIALS ARE NOT TO BE USED OR COPIED
WITHOUT PRIOR WRITTEN PERMISSION FROM BKI. ALL
RIGHTS ARE RESERVED.

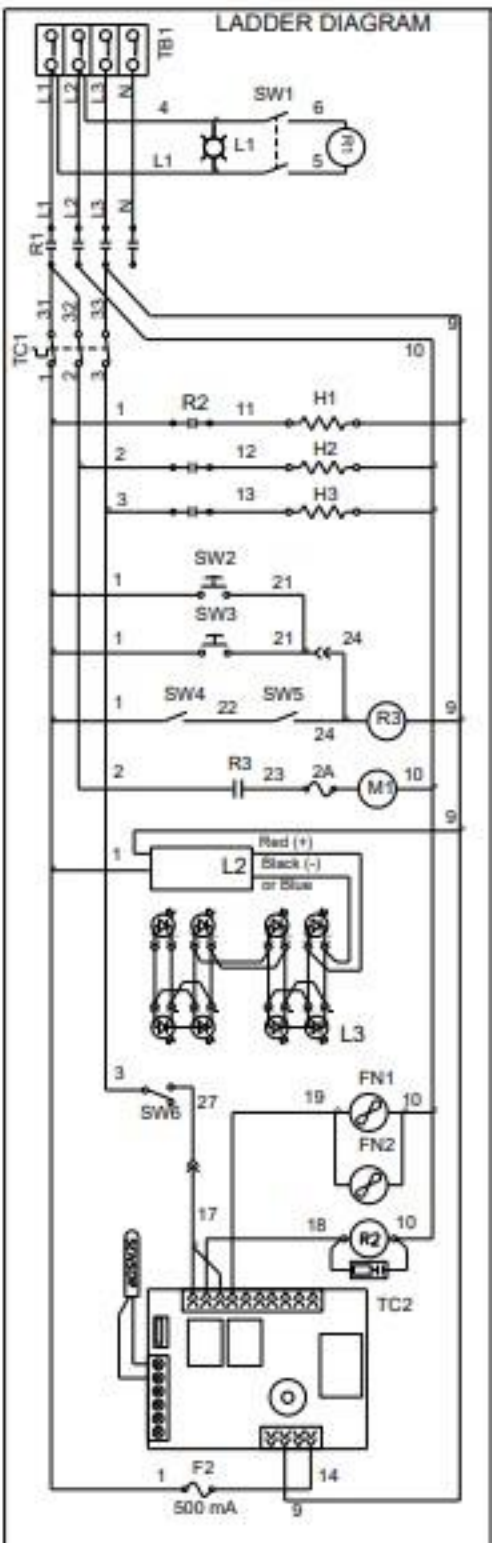
VOLTAGE	AMPS.	KILOWATTS	BREAKER SIZE
208	35.8	12.7	50
220	29.3	10.9	50
240	31.6	12.9	50



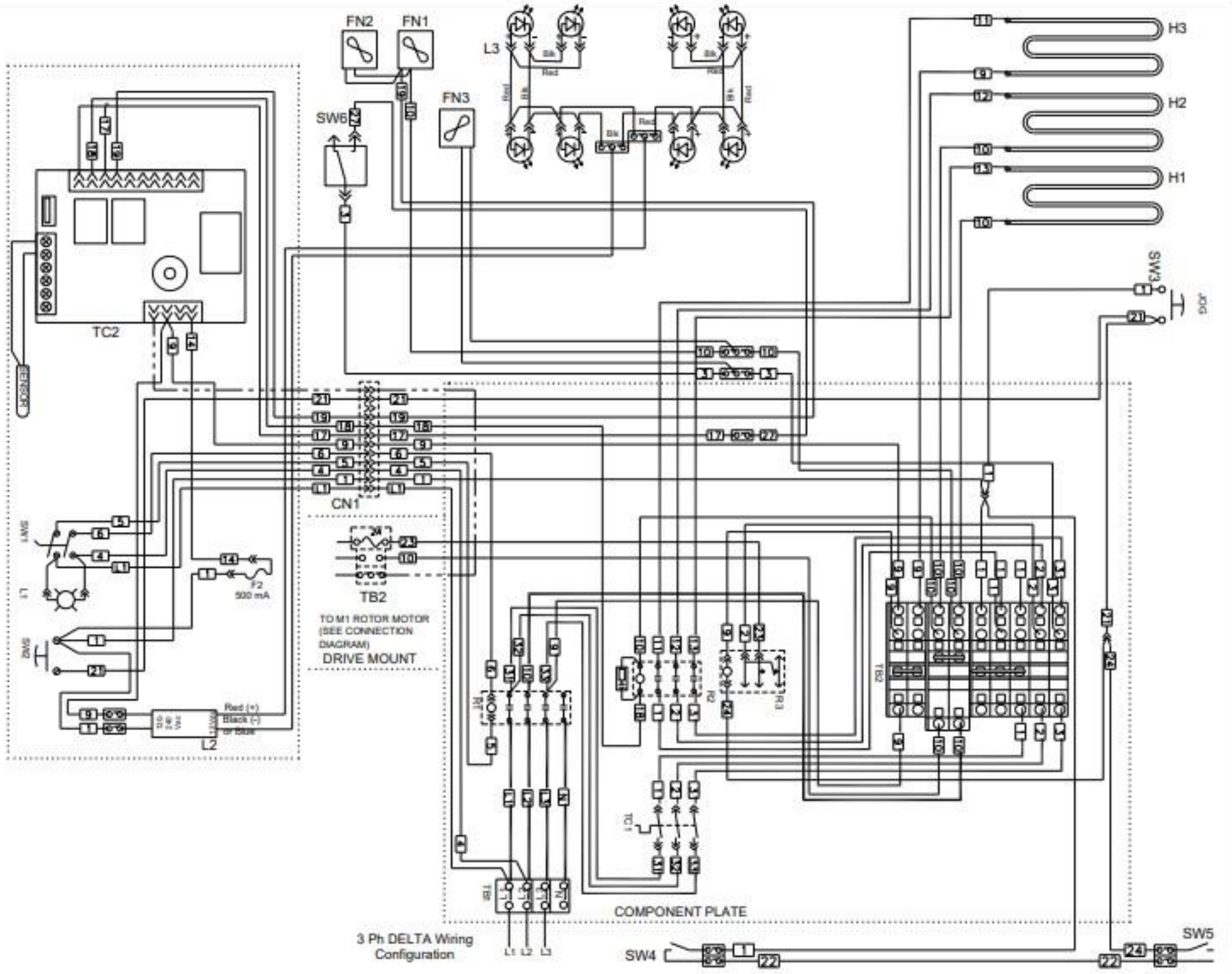
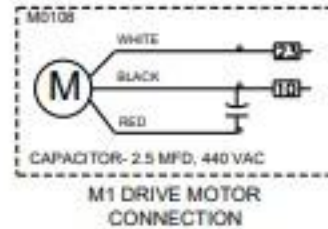
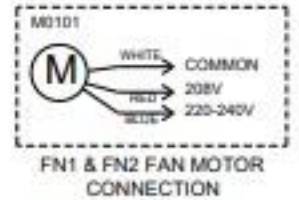
DRAWN BY: TAH
DATE: 8/07/18
MODEL No.: VGG-8, LED Lights, High Wattage

PHASE: 3
No. OF WIRES: 4

REV. No.:
TYPE | SIZE | DRAWING No.:
S | B | 55090100



- #### COMPONENT LEGEND
- F1-F0304 FUSE, 8 A
 - F2-FU010UK FUSE, 1/2 A
 - FU004UK FUSE HOLDER
 - FN1/ M0101 FAN MOTOR, 208-240V
 - FN2/ FN0032 FAN IMPELLER
 - FN3/
 - FN4- FN0012 COOLING FAN, 230V
 - H1/H0321 CALROD, 3400W@208V
 - H2-C0322 CALROD, 3400W@230V
 - H3/
 - L1-L1016UK CLR PILOT LIGHT, 250V
 - L2-LED011 POWER SUPPLY, 12 Vdc
 - L3-EA55097 100 LED LAMP
 - M1-AN5501500S GEARMOTOR, 208-240V
 - R1-R0150 CONTACTOR, 40A 4P
 - R2-R0127 CONTACTOR, 25A 4P
 - R0140 RC SUPPRESSOR
 - R3-R0171 RELAY, SPDT 220/240V
 - SW1/ S0304 2 POS. OPERATOR / S0307 CONTACT BLOCK, 1 N.O.
 - SW2/ S0309 PB OPERATOR
 - SW3/ S0307 CONTACT BLOCK, 1 N.O.
 - SW4- S0363 REED SWITCH, N.O.
 - SW5/
 - SW6- S0355 MICRO SWITCH
 - TB1-TB0125 #4, 4 P TERMINAL BLOCK
 - TB2-TB0003 #8, 3 POLE SECTION
 - TB0004 #8, 3 POLE END SECTION
 - TB0121 JUMPER, #8 x 2 POLE
 - TB0100 #10, 3 POLE SECTION
 - TB0102 #10, 3 POLE END PLATE
 - TB0106 JUMPER, #10 x 2 POLE
 - TB0109 TERMINAL END STOP
 - TC1-TM015UK THERMOSTAT, HI-LIMIT
 - TC2-CP0065 CONTROLLER, TOUCH SCREEN



NOTICE: THE COMBINATION OF FACTS, DATA, DESIGN ELEMENTS, ENGINEERING DATA, MANUFACTURING DATA AND ASSEMBLY DATA WHICH MAY BE CONTAINED IN THIS DRAWING ARE OF A PROPRIETARY NATURE TO BSI. THESE MATERIALS ARE NOT TO BE USED OR COPIED WITHOUT PRIOR WRITTEN PERMISSION FROM BSI. ALL RIGHTS ARE RESERVED.		VOLTAGE	AMPS.	KILOWATTS	BREAKER SIZE
		208	30.3	10.7	40
		220	26.4	9.8	40
PHASE	No. OF WIRES	240	28.5	11.6	40



DRAWN BY	DATE	MODEL No.
TAH	3/09/18	VGG-8, LED Lights, Std Wattage

REV. No.	TYPE	SIZE	DRAWING No.
	S	B	55090000