



30 Pine Street • New Rochelle • New York • 10801

1 - 914 / 576 - 0200

1 - 914 / 576 - 0605 fax

1 - 800 - 431 - 2745 US & Canada

www.bakerspride.com web address

# EP, EB & ER 3836/5736

## Electric Deck Oven

### PARTS LIST

## SUPERDeck SERIES



Model Number: **EP, EB & ER 3836**  **8"**

**EP, EB & ER 5736**  **12"**

Serial Number: \_\_\_\_\_

**Voltage/Phase**

208V/1  208V/3

240V/1  240V/3

# EP, EB & ER 3836/5736

Electric Deck Oven

30 Pine Street • New Rochelle • New York • 10801

1 - 914 / 576 - 0200

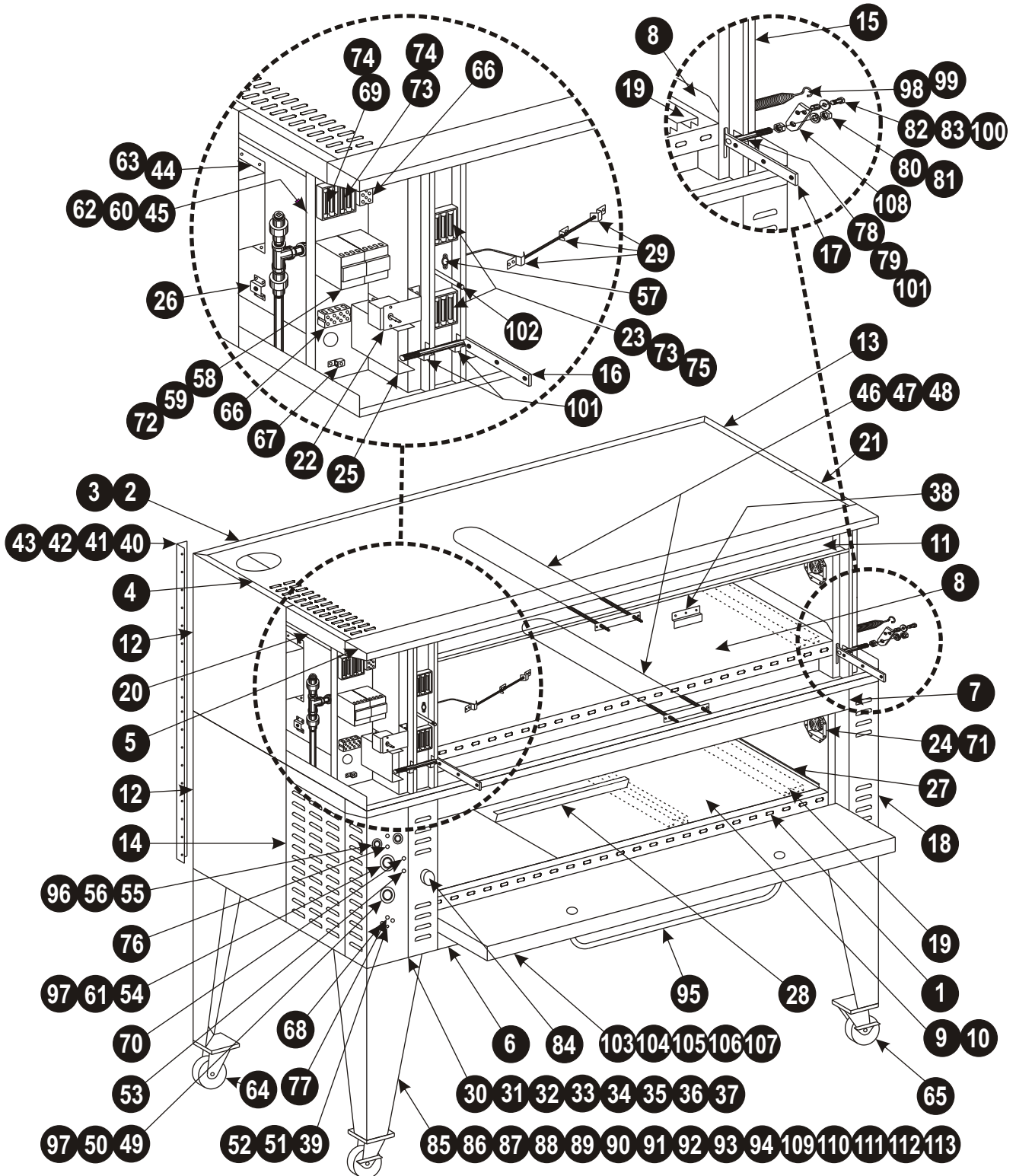
1 - 914 / 576 - 0605 fax

1 - 800 - 431 - 2745 US & Canada

www.bakerspride.com web address



## EXPLODED VIEW



## PARTS LIST

Item	3836	5736	Description	Item	All Mdl's	Description
1	C4038K	C4039K	Deck Trim	57	M1370A	Hi-Limit Switch 140C 240/120V 10/15A
2	C4049U	C4050U	Outer Back Asm 8"	58	M1371A	Contactora 4 Pole 600V 25A 208V 50/60 Hz
3	C4142U	C4143U	Outer Back Asm 12"	59	M1372A	Contactora 4 Pole 600V 25A 220-240V 50/60 Hz
4	C4056U	C4057U	Outer Top Asm	60	M1387A	Solenoid Valve 1/2B 1/2P
5	C4067K	C4068K	Top Trim	61	M1374A	Electric Timer 250V 5 Hour
6	C4077K	C4078K	Bottom Apron	62	M1388A	Solenoid Coil 208-240V 50/60Hz
7	C4079K	C4080K	Top Apron	63	M1376A	Transformer 480/240V 0.25KVA
8	T1224U	T1225U	Steel Deck Asm	64	S1022X	Caster 4" No Lock (each)
9	T1232Y	T1232X	Hearth Baking Deck (Set/2 for 3836 - Set/3 for 5736)	65	S1023X	Caster 4" w/Lock (each)
10	T1232A	T1232A	Hearth Baking Deck 19 x 36 x 1 (each)	66	P1004A	Terminal Block 4 Pole 600V 85A
11	S6060Y	S6060X	Insulation Needled Blanket 1"	67	P1025A	Grounding Lug 140A
68	M1049X		PB Switch SPST Mom Contact 250/125V 3/6A (Steam)	69	P1118A	Fuse KTK Class CC 600V 10A
69	P1118A		Fuse KTK Class CC 600V 10A	70	P1128A	Indicator Lamp 1/2" 250V 1/3W Green (Timer)
70	P1128A		Indicator Lamp 1/2" 250V 1/3W Green (Timer)	71	P1145A	Lamp Asm 240V 15W
71	P1145A		Lamp Asm 240V 15W		P1147X	Bulb, 240V 15W
72	P1150A		Mounting Strip for Contactors	72	P1150A	Mounting Strip for Contactors
73	P1164A		Fuse KTK Class CC 600V 30A	73	P1164A	Fuse KTK Class CC 600V 30A
74	P1165A		Fuse Block 2 Pole 600V 30A	74	P1165A	Fuse Block 2 Pole 600V 30A
75	P1166A		Fuse Block 3 Pole 600V 30A	75	P1166A	Fuse Block 3 Pole 600V 30A
76	P1167A		Indicator Lamp 1/2" 250V 1/3W Amber (Heat selector)	76	P1167A	Indicator Lamp 1/2" 250V 1/3W Amber (Heat selector)
77	P1168A		Indicator Lamp 1/2" 250V 1/3W Red (Steam)	77	P1168A	Indicator Lamp 1/2" 250V 1/3W Red (Steam)
78	Q3001A		Flat Washer 19/32 x 1" x 1/8 (2)	78	Q3001A	Flat Washer 19/32 x 1" x 1/8 (2)
79	Q3002A		Flat Washer 19/32 x 1" x 1/16 (4)	79	Q3002A	Flat Washer 19/32 x 1" x 1/16 (4)
80	Q3007A		Split Lock Washer 9/16 (Door Rod)	80	Q3007A	Split Lock Washer 9/16 (Door Rod)
81	Q2401A		Hexagon Nut 9/16-18 (Door Rod)	81	Q2401A	Hexagon Nut 9/16-18 (Door Rod)
82	Q3010A		Flat Washer 7/16 x 1" x 5/64 (Bushing/Sleeve)	82	Q3010A	Flat Washer 7/16 x 1" x 5/64 (Bushing/Sleeve)
83	Q2301A		Shoulder Bolt 3/8-16 x 1" (Bushing/Sleeve)	83	Q2301A	Shoulder Bolt 3/8-16 x 1" (Bushing/Sleeve)
84	S1005A		Push-Pull Knob 3/8-16 (Vent)	84	S1005A	Push-Pull Knob 3/8-16 (Vent)
85	S1018Y		Legs 12" (Set/4 w/Bolts & Washers)	85	S1018Y	Legs 12" (Set/4 w/Bolts & Washers)
86	S1018T		Leg 12" (each) w/Bolts & Washers	86	S1018T	Leg 12" (each) w/Bolts & Washers
87	S1004Y		Legs 30" (Set/4) w/Bolts & Washers	87	S1004Y	Legs 30" (Set/4) w/Bolts & Washers
88	S1004X		Leg 30" (each) w/Bolts & Washers	88	S1004X	Leg 30" (each) w/Bolts & Washers
89	S1406Y		Legs 36" (Set/4) w/Bolts & Washers	89	S1406Y	Legs 36" (Set/4) w/Bolts & Washers
90	S1406A		Leg 36" (each) w/Bolts & Washers	90	S1406A	Leg 36" (each) w/Bolts & Washers
91	S1019Y		Legs 6" (Set/4) w/Bolts & Washers	91	S1019Y	Legs 6" (Set/4) w/Bolts & Washers
92	S1019T		Leg 6" (each) w/Bolts & Washers	92	S1019T	Leg 6" (each) w/Bolts & Washers
93	S1251Y		Legs 24" (Set/4) w/Bolts & Washers	93	S1251Y	Legs 24" (Set/4) w/Bolts & Washers
94	S1251A		Leg 24" (each) w/Bolts & Washers	94	S1251A	Leg 24" (each) w/Bolts & Washers
95	S1196A		Door Handle 30" w/Screws	95	S1196A	Door Handle 30" w/Screws
96	S1205A		Knob 1/4 D (Heat Selector)	96	S1205A	Knob 1/4 D (Heat Selector)
97	S1311A		Knob 1/4 D (Timer/Thermostat)	97	S1311A	Knob 1/4 D (Timer/Thermostat)
98	S3004A		Door Spring 13/16 x 6-3/4	98	S3004A	Door Spring 13/16 x 6-3/4
99	S3003A		Door Spring 1-1/8 x 9-3/4	99	S3003A	Door Spring 1-1/8 x 9-3/4
100	S3108A		Bushing/Sleeve Asm	100	S3108A	Bushing/Sleeve Asm
101	S3239A		Bearing Block 1 x 1 x 1/2 Bronze	101	S3239A	Bearing Block 1 x 1 x 1/2 Bronze
102	S3241A		Flue Rod 3/8-16 x 37"	102	S3241A	Flue Rod 3/8-16 x 37"
103	U1043A		Bakers Pride Logo 13-1/4	103	U1043A	Bakers Pride Logo 13-1/4
104	C4085T		Door Asm 3836-8" w/o Door Arm Asm's	104	C4085T	Door Asm 3836-8" w/o Door Arm Asm's
105	C4086T		Door Asm 5736-8" w/o Door Arm Asm's	105	C4086T	Door Asm 5736-8" w/o Door Arm Asm's
106	C4151T		Door Asm 3836-12" w/o Door Arm Asm's	106	C4151T	Door Asm 3836-12" w/o Door Arm Asm's
107	C4152T		Door Asm 5736-12" w/o Door Arm Asm's	107	C4152T	Door Asm 5736-12" w/o Door Arm Asm's
108	A3295E		Spring Lever	108	A3295E	Spring Lever
109	S1075X		S/S Leg Wrap 6" (Set/2)	109	S1075X	S/S Leg Wrap 6" (Set/2)
110	S1076X		S/S Leg Wrap 12" (Set/2)	110	S1076X	S/S Leg Wrap 12" (Set/2)
111	S1331X		S/S Leg Wrap 24 1/2" (Set/2)	111	S1331X	S/S Leg Wrap 24 1/2" (Set/2)
112	S1078X		S/S Leg Wrap 30" (Set/2)	112	S1078X	S/S Leg Wrap 30" (Set/2)
113			S/S Leg Wrap 36" (Set/2)	113		S/S Leg Wrap 36" (Set/2)

