



30 Pine Street • New Rochelle • New York • 10801
 914 / 576 - 0200
 914 / 576 - 0605 fax
 1 - 800 - 431 - 2745 US & Canada
 www.bakerspride.com web address

P18S / BK18

Electric Countertop Oven

PARTS LIST



Model Number: **P18S** **BK18**

Serial Number: _____

Voltage (Single Phase Only)

115V 200V 208-240V

P18S / BK18

Electric Countertop Oven

30 Pine Street • New Rochelle • New York • 10801

914 / 576 - 0200

914 / 576 - 0605 fax

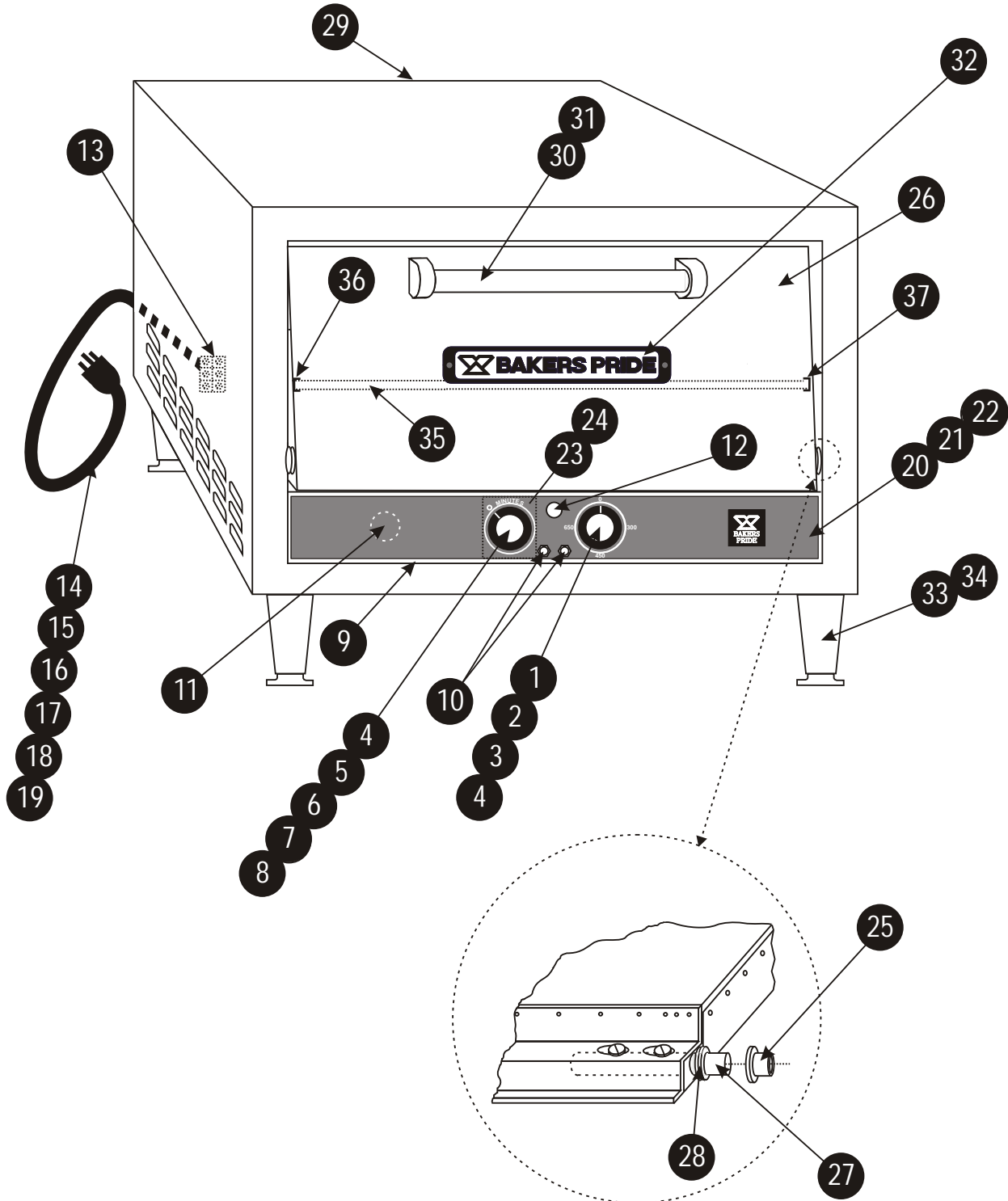
1 - 800 - 431 - 2745 US & Canada

www.bakerspride.com web address



Figure A

Exterior / Door / Controls (Rotary Timers)





30 Pine Street • New Rochelle • New York • 10801
 914 / 576 - 0200
 914 / 576 - 0605 fax
 1 - 800 - 431 - 2745 US & Canada
 www.bakerspride.com web address

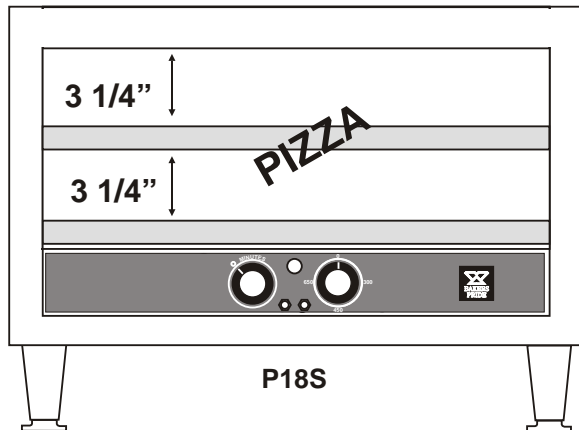
P18S / BK18

Electric Countertop Oven

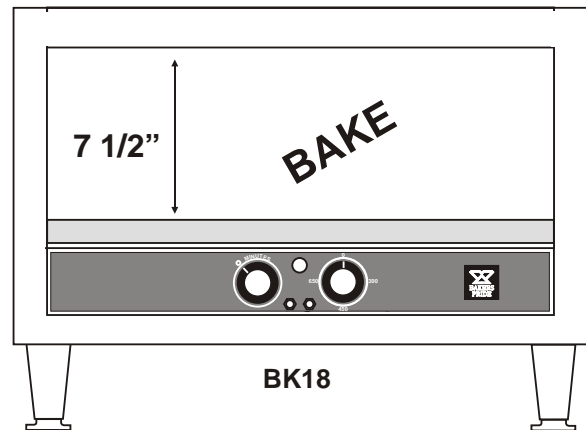
Item	Part #	Description	Item	Part #	Description
1	M1098X	Thermostat w/Knob, EGO (Standard) P-18	20	U1302X	Control Panel Overlay, EGO (P-18)
2	M1192X	Thermostat w/Knob, EGO (High Heat) P-18	21	U1307A	Control Panel Overlay, EGO Hi-Heat (P-18)
3	M1110X	Thermostat w/Knob, KA-72, 550deg (BK-18)	22	U1314A	Control Panel Overlay (BK-18)
4	S1311X	Knob (Thermostat & Timer)	23	U1297A	18 Minute Timer Overlay (50 cycles)
5	M1332X	Timer, Rotary-Elec, 60 Min, 120V (BK-18)	24	U1296A	72 Minute Timer Overlay (50 cycles)
6	M1346X	Timer, Rotary-Elec, 60 Min, 220V (BK-18)	25	S3019X	Bushing, Door
7	M1331X	Timer, Rotary-Elec, 15 Min, 120V (P-18)	26	D3106X	Door Assy w/Handle
8	M1345X	Timer, Rotary-Elec, 15 Min, 220V (P-18)	27	S3001X	Door Rod
9	D3157K	Control Panel	28	Q3021X	Door Rod Spacer Kit (1 Kit per Door)
10	M1330A	Circuit Breaker, 3 Amp	29	D3105K	Outer Back
11	M1335X	Audio Alarm	30	S1316U	Door Handle Assy, 10"
12	P1127X	Pilot Light, Amber	31	Q2041A	Screw, 1/4-20 x 1/2 Rd Hd (Door Handle)
13	P1089A	Terminal Block, 3 Pole	32	U1044X	Bakers Pride Nameplate, 8"
14	P6004X	Line Cord 125V/15A (US) P & BK	33	S1014X	4" Adjustable Leg (Set/4)
15	P6005X	Line Cord 250V/15A (US & Japan) P & BK	34	S1014Y	4" Adjustable Leg (each)
16	P6383X	Line Cord 125V/20A (Canada)	35	T3150A	Intermediate Wire Rack (Option, BK18)
17	P6009X	Line Cord 250V/20A (Canada)	36	D3162U	Wire Rack Support Assy, Left (Option)
18	P6006X	Line Cord, 230V/16A "C" Type (CE)	37	D3163U	Wire Rack Support Assy, Right (Option)
19	P6343X	Line Cord, 230V/13A (UK)			

Figure B

DECK ARRANGEMENT BY MODEL



P18S



BK18

P18S / BK18

Electric Countertop Oven

30 Pine Street • New Rochelle • New York • 10801

914 / 576 - 0200

914 / 576 - 0605 fax

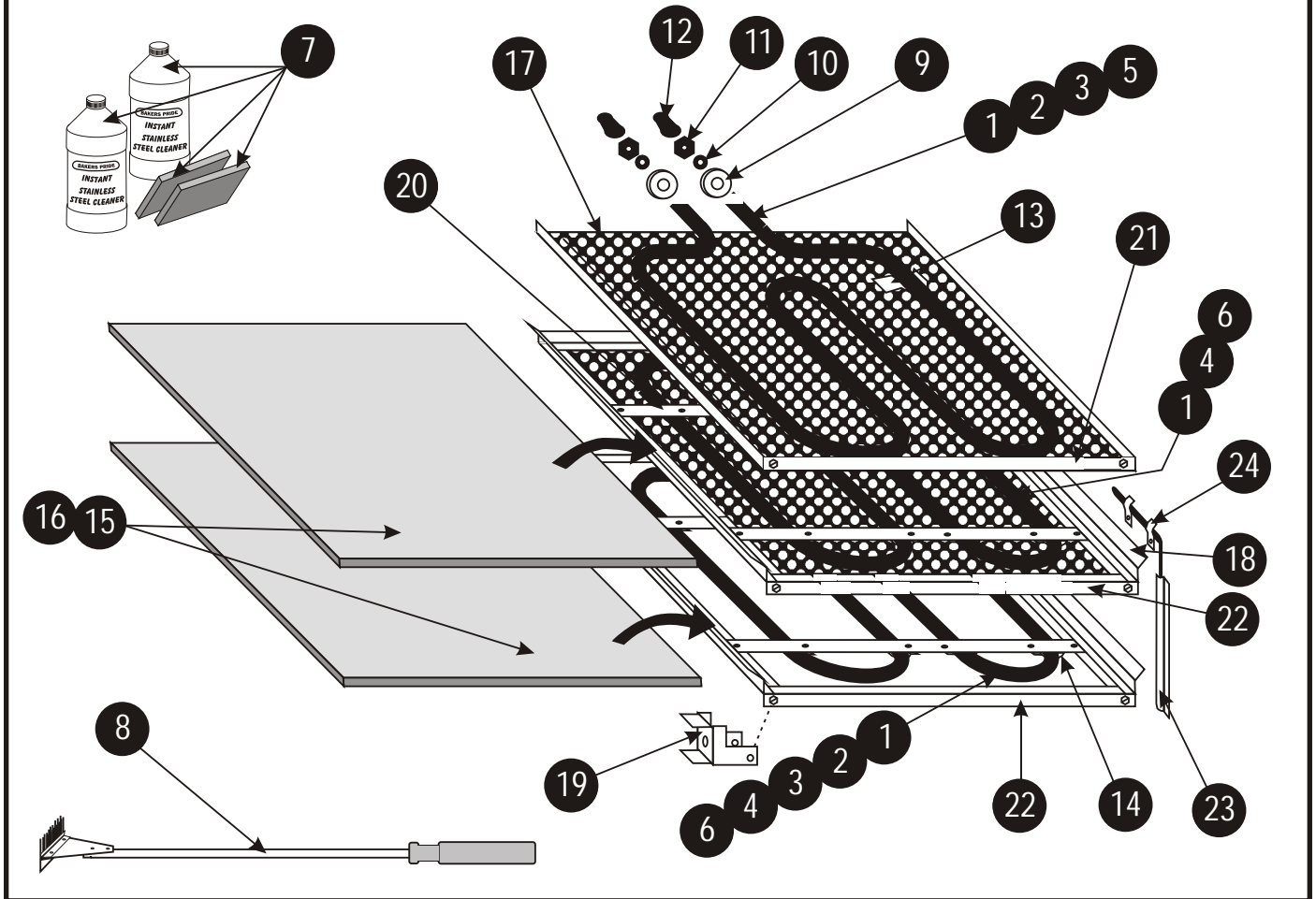
1 - 800 - 431 - 2745 US & Canada

www.bakerspride.com web address



Figure C

Interior Components & Accessories



Item	Part #	Description	Item	Part #	Description
1	L1024X	Element 115V/600W (US/Can) P-18, T,C & B	13	K1355X	Baffle & Top Elem. Clips (5) BK
2	L1171X	Element 115V/850W (US/Can) BK-18, T & B	14	P1042A	Element Clip, 5/16", Center & Bottom
3	L1025X	Element 208-240V/850W (US/Can/CE) P Top, BK T&B	15	T1120Y	Ceramic Deck, 17 1/2 x 17 3/4 x 1/2 (each)
4	L1026X	Element 208-240V/1KW (US/Can/CE) P-18 C & B	16	T1120X	Ceramic Deck, 17 1/2 x 17 3/4 x 1/2 (set/2)
5	L1112X	Element 200V/850W (Japan) P-18 Top	17	D3140Z	Fresh Dough Baffle
6	L1113X	Element 200V/1000W (Japan) P-18 C & B	18	D3152T	Hearth Frame Assy
7	T5118X	Stainless Steel Cleaner (2 16oz Bottles w/pads)	19	D4039K	Deck Support
8	T5107Y	Deck Scraper Brush	20	D3151K	Element Support
9	P1019X	Porcelain Spacer	21	D3131K	Baffle Trim
10	Q3016A	Washer, Star, #6	22	D3142K	Deck Trim
11	Q1002A	Nut, 6-32	23	D1134K	Capillary Cover
12	S1061X	6-32 Terminal Cap	24	Q4021X	Clip 3/16", Temp Sensor (2)