



30 Pine Street • New Rochelle • New York • 10801  
 914 / 576 - 0200  
 914 / 576 - 0605 fax  
 1 - 800 - 431 - 2745 US & Canada  
 www.bakerspride.com web address

P-44S / P-44BL / P-46S / P-48S

Electric Countertop Oven

## PARTS LIST



**THIS PARTS LIST PERTAINS TO THE FOLLOWING UNITS:**

Model #	Voltage	Starting Serial #	Date
P-44BL	All	All	
P-44S	208VAC	#9503	11/12/99
P-44S	230VAC	#6475	11/12/99
P-46S	All	#17309	3/1/00
P-48S	All	#17161	2/18/00

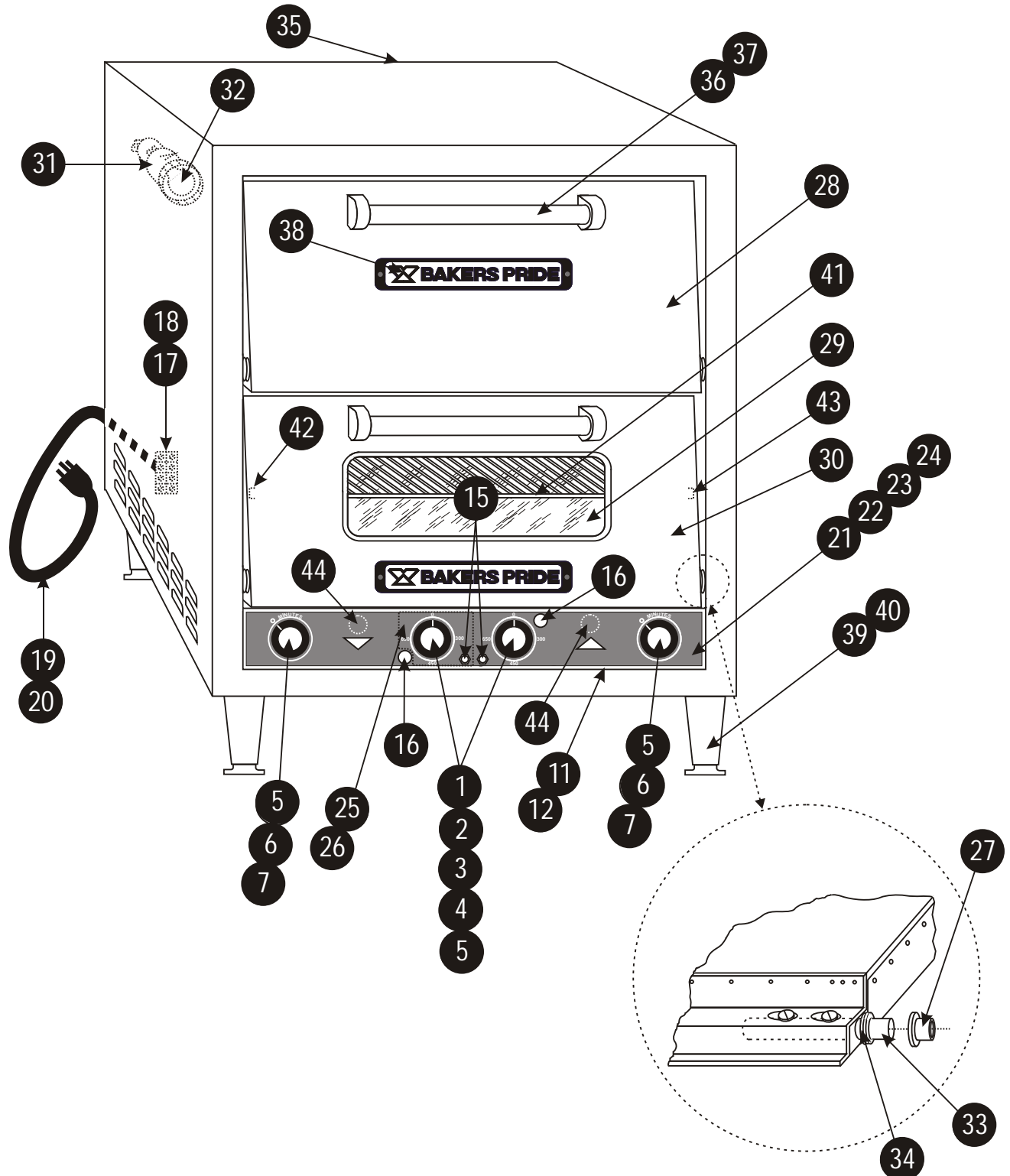


Model Number	Serial Number	Voltage	Phase
P-44S <input type="checkbox"/> P-44BL <input type="checkbox"/>	_____	200V <input type="checkbox"/> 208V <input type="checkbox"/> 230V <input type="checkbox"/>	1 <input type="checkbox"/>
P-46S <input type="checkbox"/> P-48S <input type="checkbox"/>		220/240V <input type="checkbox"/> 230/400V <input type="checkbox"/>	3 <input type="checkbox"/>



Figure A

EXTERIOR / DOOR / CONTROLS (NO LIGHTS, ROTARY TIMERS)





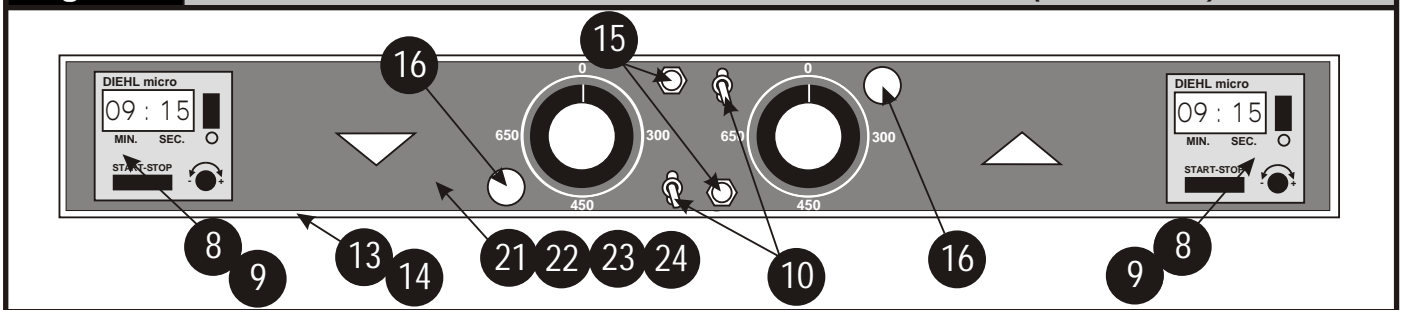
30 Pine Street • New Rochelle • New York • 10801  
 914 / 576 - 0200  
 914 / 576 - 0605 fax  
 1 - 800 - 431 - 2745 US & Canada  
 www.bakerspride.com web address

*P-44S / P-44BL / P-46S / P-48S*

*Electric Countertop Oven*

Item	Part #	Description	Item	Part #	Description
1	M1098X	Thermostat w/Knob, 650F EGO, 44(2) 46(1)	23	U1316A	Control Panel Overlay (P-46)
2	M1192X	Thermostat w/Knob, CE "430C" High Heat 44	24	U1318A	Control Panel Overlay (P-48)
3	M1342X	Thermostat Kit w/Knob, 250F (Special)	25	U1297A	18 Minute Timer Overlay (50 cycles)
4	M1110X	Thermostat w/Knob, 550F KA72, 46 (1), 48 (2)	26	U1296A	72 Minute Timer Overlay (50 cycles)
5	S1311X	Knob (T-stat "F", 15 Min Timer: Rot-Elec)	27	S3019X	Door Bushing
6	M1345X	Timer, Rotary-Elec, 15 Min, 44(2) 46(1)	28	D1106U	Door Assy (No Window)
7	M1346X	Timer, Rotary-Elec, 60 Min, 46(1) 48(2)	29	S1020X	Window Assy (Door)
8	M1275X	Timer, Electronic (Digital Readout) 60 cycle	30	D1143U	Door Assy (w/Window)
9	M1274X	Timer, Electronic (Digital Readout) 50 cycle	31	P1145X	Light Fixture (w/240V,15W Bulb)
10	M1259X	Toggle Switch (Lights, On/Off)	32	P1147X	Light Bulb, 240V/15W
11	D2157K	Control Panel (Rot/Elect Timer-No Lights)	33	S3001X	Door Rod
12	D2101K	Control Panel (Rot/Elect Timer-w/Lights)	34	Q3021X	Door Rod Spacer Kit (1 Kit per Door)
13	D2156K	Control Panel (Electronic Timer-No Lights)	35	D2105K	Outer Back
14	D2102K	Control Panel (Electronic Timer-W/Lights)	36	S1316U	Door Handle
15	M1330A	Circuit Breaker, 3A	37	Q2041A	Screws, 1/4-20 x 1/2 RH (Door Handle)
16	P1127X	Pilot Light, Amber	38	U1044X	Bakers Pride Nameplate, 8"
17	P1003X	Terminal Block, 3 Pole, 1 Phase	39	S1014X	4" Adjustable Leg (Set/4)
18	P1004X	Terminal Block, 4 Pole, 3 Phase	40	S1014Y	4" Adjustable Leg (each)
19	P6399A	Line Cord, 125/250V, 50A	41	T3139A	Intermediate Wire Rack (Option 46 & 48)
20	P6385A	Line Cord, 250V, 30A (P-46 & P-48)	42	D1162U	Wire Rack Support Assy, Left (Option)
21	U1304A	Control Panel Overlay (44 & 44BL)	43	D1163U	Wire Rack Support Assy, Right (Option)
22	U1310A	Control Panel Overlay, Hi Heat (44 & 44BL)	44	M1335A	Audio Alarm

**Figure B** CONTROL PANEL WITH LIGHTS & DIGITAL TIMERS (OPTIONAL)



**Figure C** DECK ARRANGEMENT BY MODEL

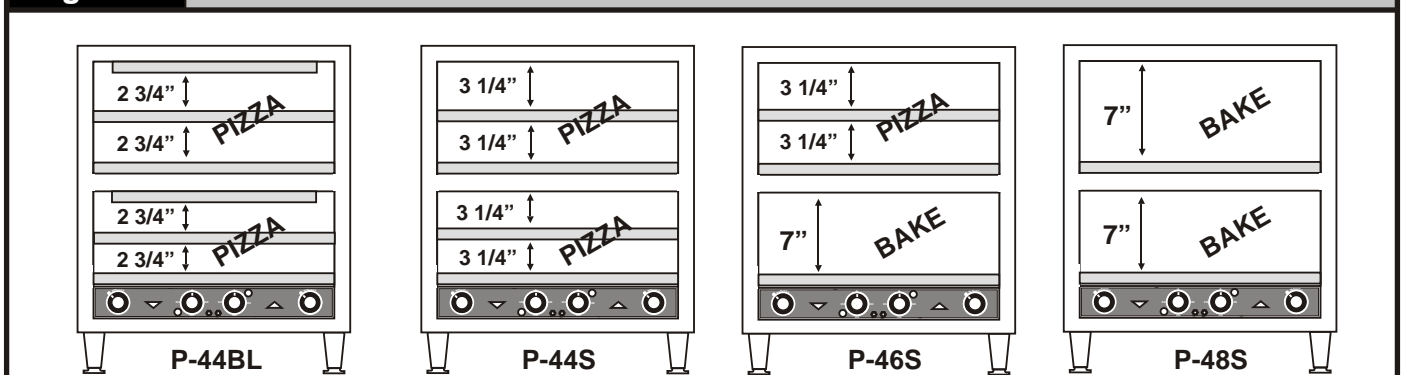
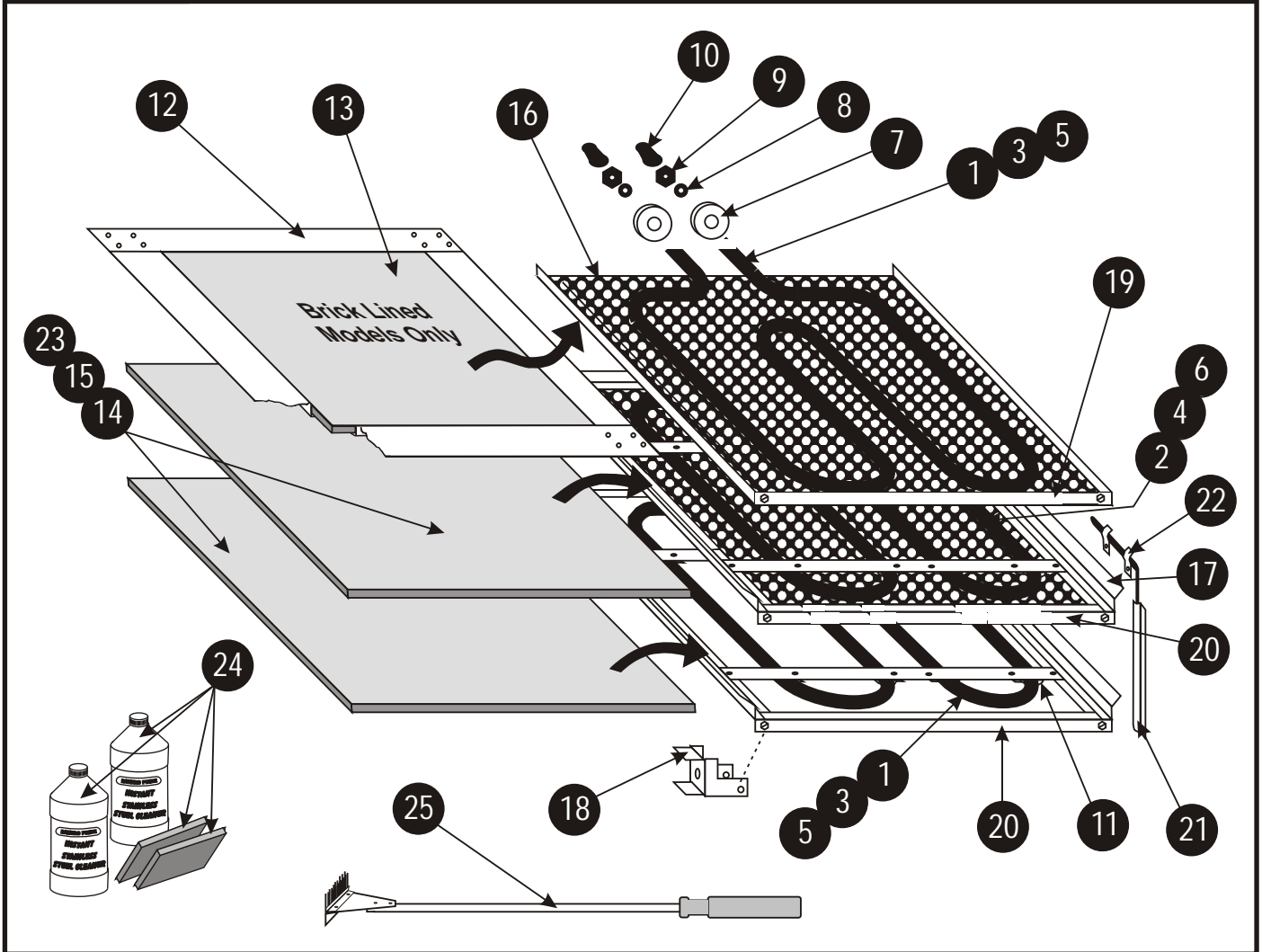




Figure D

Interior Components & Accessories



Item	Part #	Description	Item	Part #	Description
1	L1072X	Element, 208V/1075W, Top & Bottom	14	T1121Y	Deck 20 13/16 x 20 13/16 x 1/2 (each)
2	L1071X	Element, 208V/1450W, Center	15	T1121X	Deck 20 13/16 x 20 13/16 x 1/2 (Set/2)
3	L1035X	Element, 230V/1075W, Top & Bottom	16	D4040X	Fresh Dough Baffle
4	L1034X	Element, 230V/1450W, Center	17	D1152T	Hearth Frame Assy (No Element)
5	L1117X	Element, 200V/1075W, Top & Bottom (Japan)	18	D4039K	Deck Support
6	L1116X	Element, 200V/1450W, Center (Japan)	19	D4031K	Baffle Trim
7	P1019A	Porcelain Spacer	20	D1142K	Hearth Trim
8	Q3016A	Washer, Star, #6	21	D1134K	Capillary Cover
9	Q1002A	Nut, 6-32	22	Q4021X	Clip, 3/16"
10	S1061X	Terminal Cap, 6-32	23	T1222K	Steel Deck (Optional)
11	K1355X	Element Clip	24	T5118X	Stainless Steel Cleaner (2 16oz Bottles w/Pads)
12	D1158U	Ceramic Top Frame Assy (P-44BL Only)	25	T5107Y	Deck Scraper Brush
13	T1120Y	Deck, ea 17 3/4 x 17 1/2 x 1/2 (P-44BL Only)			