



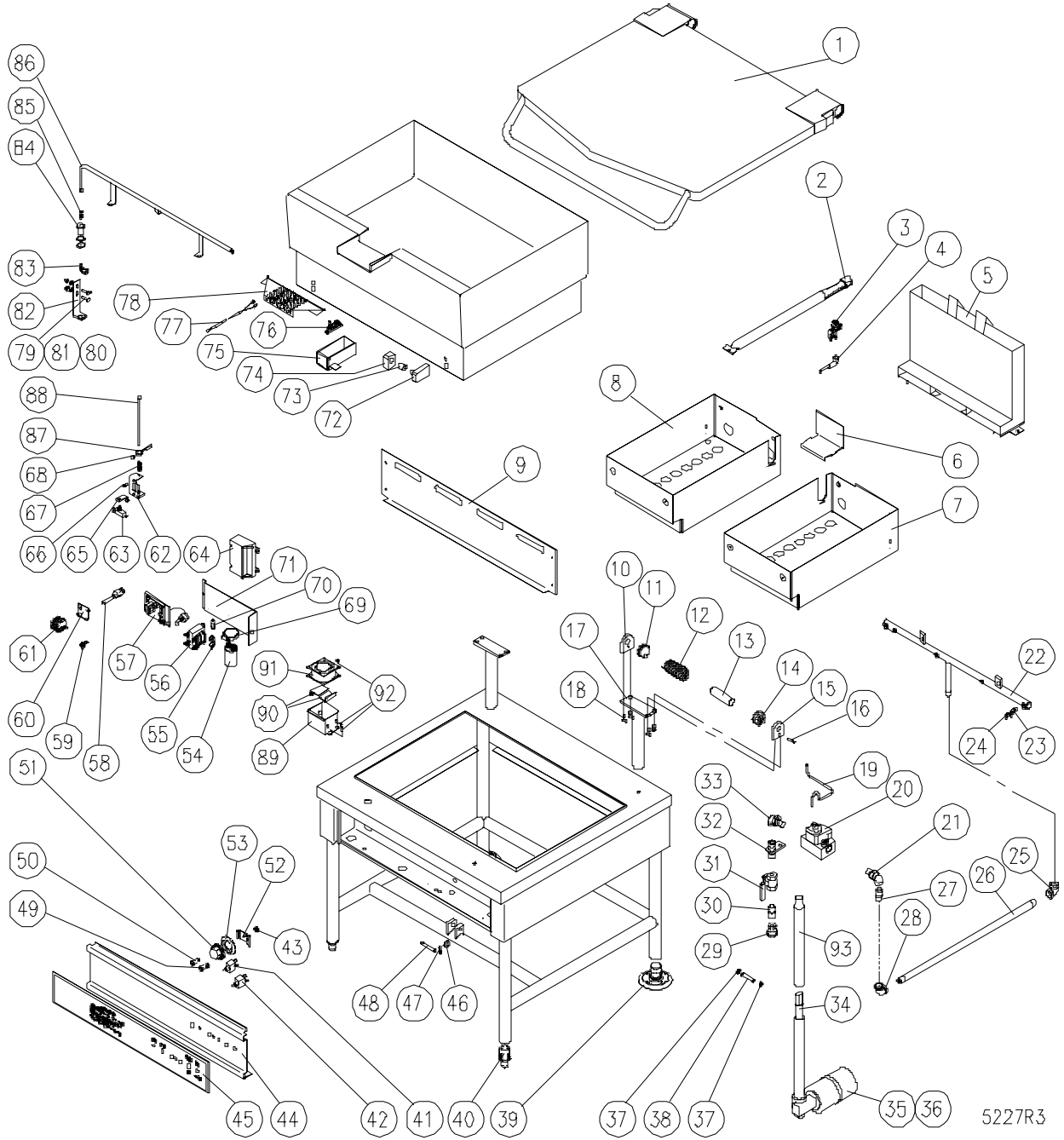
**PARTS LIST**  
**GAS TILTING SKILLETS**  
**BLODGETT MODELS: BLP-30G**  
**BLP-40G**



Revised October 23, 2006

**BLODGETT OVEN CO** ▪ 44 lakeside Ave ▪ Burlington, VT 05446  
Tel. 800-331-5842 ▪ Fax 802-860-3732 ▪ [www.blodgett.com](http://www.blodgett.com)

**FIGURE 1**



5227R3

<u>ITEM</u>	<u>Part #</u>	<u>DESCRIPTION</u>	<u>QUANTITY</u>	
			<u>BLP-30G</u>	<u>BLP-40G</u>
1	41308	Pan Cover Assembly	1	
	41309	Pan Cover Assembly		1
2	42550	Burner	4	6
** 3	42349	Pilot Complete With Spark Ignitor, Nat.	1	1
	42350	Pilot Complete With Spark Ignitor, LP	1	1
4	41039	Ignition Cable	1	1
5	41266	Flue Assembly	1	
	41265	Flue Assembly		1
6	42365	Compartment Spacer (3665)	1	1
7	41335	Right Hand Burner Compartment	1	
	41337	Right Hand Burner Compartment		1
8	41334	Left Hand Burner Compartment	1	
	41336	Left Hand Burner Compartment		1
9	40194	Back Panel	1	
	40195	Back Panel		1
10	41520	End Stop Plate	2	2
11	43107	Rotary Disc	2	2
12	41526	Spring	2	2
13	41100	Core	2	2
14	43106	Stationary Disc	2	2
15	41546	End Lock Plate	2	2
16	41543	Lock Pin	2	2
17	43299	Hinge Support Assembly	2	
	43300	Hinge Support Assembly		2
18	40098	Cap Screw 5/8-18 x 3/4	8	8
19	40859	Pilot Burner Tube, 30 gallon	1	
19	43301	Pilot Burner Tube, 40 gallon		1
** 20	41108	Combination Gas Control, Nat	1	1
	41109	Combination Gas Control, LP	1	1
21	40771	Union Elbow Assembly 1/2"	1	1
22	40164	Gas Manifold Assembly	1	

<u>ITEM</u>	<u>Part #</u>	<u>DESCRIPTION</u>	<u>QUANTITY</u>	
			<u>BLP-30G</u>	<u>BLP-40G</u>
	40065	Gas Manifold Assembly		1
23	40312	Orifice Nipple	4	6
** 24	42299	Burner Orifice, Natural Gas	4	
	42300	Burner Orifice, Natural Gas		6
	42307	Burner Orifice, LP	4	
	42308	Burner Orifice, LP		6
25	41788	90° Elbow ½"	1	1
26	43302	Pipe ½" x 27 ½"	1	1
27	41774	Nipple ½" x 1 ½"	1	1
28	41788	90° Elbow ½"	1	1
29	41812	Reducing Coupling, ¾" x ½"	1	1
30	41773	Close Nipple, ½"	1	1
31	41893	Gas Shut Off Valve	1	1
32	43303	Nipple with Flange, ½" x 2 ½"	1	1
33	40616	Union Elbow, ½"	1	
** 34	41126	Ball Drive Actuator Assembly, 115V (Includes 35, 36, 93)	1	1
	41096	Ball Drive Actuator Assembly, 220V (Includes 35, 36, 93)	1	1
** 35	42267	Motor 115V	1	1
	42265	Motor 220V	1	1
36	40720	Motor Cover	1	1
37	40127	Retaining Ring	2	2
38	41932	Yoke Pin	1	1
39	43254	Adjustable Foot-Flanged	2	2
40	41131	Adjustable Foot	2	2
41	41883	Power Switch	1	1
42	41884	Up/Down Switch	1	1
43	41882	Rotary Shaft Seal	1	1
44	40181	Control Panel	1	
	40193	Control Panel		1

<u>ITEM</u>	<u>Part #</u>	<u>DESCRIPTION</u>	<u>QUANTITY</u>	
			<u>BLP-30G</u>	<u>BLP-40G</u>
45	41250	Control Panel Label	1	
	41251	Control Panel Label		1
46	41850	Washer, 1" Dia. X 3/8 OD	1	1
47	43304	Cotter Pin, 1/8 x 3/4 S.S.	1	1
48	43305	Pin Lower	1	1
49	42530	Pilot Light - Temp., Red	1	1
50	42529	Pilot Light - Ignition, Green	1	1
** 51	40740	Dial F°	1	1
	40828	Dial C°	1	1
52	40438	Pot Spacer	1	1
53	40994	Bezel	1	1
** 54	42266	Capacitor 30 MFD, 120V	1	1
	42264	Capacitor 10 MFD, 220V	1	1
55	41844	Fuse Holder	1	1
** 56	41885	Transformer, 115/230V-24V, 50 VA	1	1
** 57	41127	Temperature Control w/Potentiometer, 120V	1	1
	41128	Temperature Control w/Potentiometer, 240V	1	1
58	40663	Power Cord - 120V Only	1	1
59	40840	Ground Lug	1	1
60	40488	Terminal Block Bracket	1	1
61	40708	Terminal Block Section	2	2
	40707	End Section	1	1
62	43306	Switch Mounting Bracket	1	1
63	42137	Limit Micro Switch	1	1
64	42351	Ignition Module	1	1
65	43307	Switch Bracket	1	1
66	43308	Machine Screw, 10-24 x 3/8	2	2
67	43309	Spring	1	1
68	43310	Set Screw 8-32 x 3/16	1	1
69	41800	Gear Clamp	1	1
70	41859	Fuse - 1 amp, 250V	1	1

<u>ITEM</u>	<u>Part #</u>	<u>DESCRIPTION</u>	<u>QUANTITY</u>	
			<u>BLP-30G</u>	<u>BLP-40G</u>
71	40779	Control Mounting Plate	1	1
72	43311	Tilt Bracket Assembly	2	2
73	40452	Bushing	2	2
74	43312	Tilt Bracket	2	2
75	40162	Hi-Limit Box	1	1
76	41920	Hi-Limit Safety	1	1
77	40739	Thermocouple	1	1
78	42224	Strainer	1	1
79	43313	Hex Cap Screw 1/4-20 x 1/2	2	2
80	43021	Lock Washer 1/4"	2	2
81	43314	Hex Nut, 1/4 - 20	2	2
82	40546	Lighter Orifice Bracket	1	1
83	40443	Elbow 3/8 cc x 1/8 MPT	1	1
84	40318	Bulk Head	1	1
** 85	42281	Lighter Orifice, Natural Gas	1	1
	42282	Lighter Orifice, LP	1	
	42284	Lighter Orifice, LP		1
86	41149	Lighter Tube	1	
86	41151	Lighter Tube		1
87	43315	Switch Actuator	1	1
88	43316	Actuator Rod	1	1
89	43317	Fan Bracket	1	1
90	43318	Deflector	2	2
** 91	42585	Box Fan, 120V	1	1
	43319	Box Fan, 240V	1	1
92	43320	Machine Screw, 6-32 x 1/4	10	10
93	41096	Lift Jack Extension Shield	1	1

\* NOT SHOWN.

\*\* SELECT AS REQUIRED.