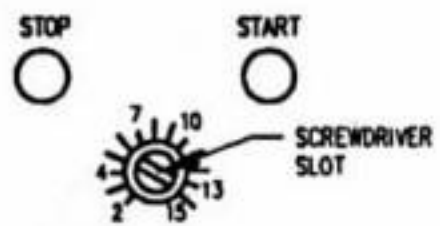


NOTE: 3 WIRE 120VAC CORD & PLUG PROVIDED. CONNECT TO NEMA RECEPTACLE 5-20 R. (15 AMP LOAD)

BREW & TRANSFER CIRCUIT: (1) FOR EACH SPRAY ARM
HEAT & FILL CIRCUIT: (1) FOR ENTIRE URN

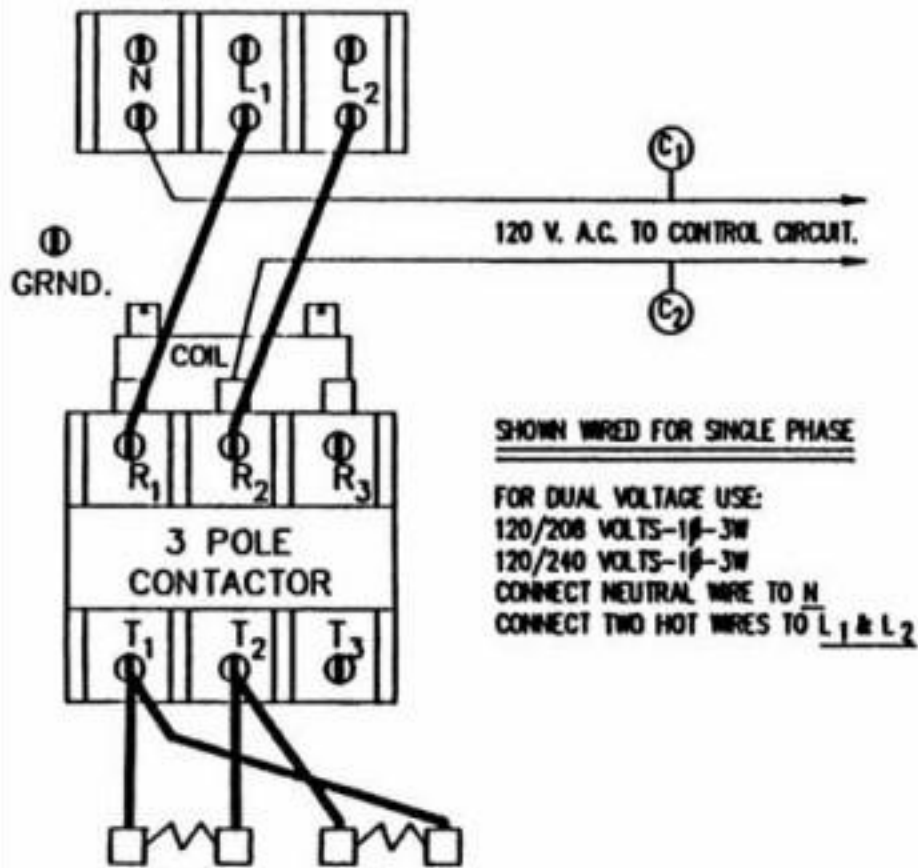


TIMER ADJUSTMENT UNDER SNAP PLUG ON CONTROL PANEL FACE

REVISIONS			AMERICAN METAL WARE		
NO.	DATE	BY			
A	11-29-93 ECN #972	WK	WIRING DIAGRAM AMV BREW URN W/NCC TIMER, AUTO REFILL/LOW WATER CUTOFF, DELAYED AUTO AIR AGITATION, STEAM OR ELECTRIC HEAT		
B					
C			DRAWN BY WK	SCALE	MATERIAL
D			CHK'D	DATE 5-1-91	DRAWING NO.
E			TRACES	APPS	091-359

SINGLE PHASE ONLY

CONNECT POWER HERE



SHOWN WIRED FOR SINGLE PHASE

FOR DUAL VOLTAGE USE:
 120/208 VOLTS-1Ø-3Ø
 120/240 VOLTS-1Ø-3Ø
 CONNECT NEUTRAL WIRE TO N
 CONNECT TWO HOT WIRES TO L₁ & L₂

2 HEATING ELEMENTS - SINGLE PHASE ONLY

DO NOT WIRE 2 ELEMENTS 3 PHASE

NOTE: A 2 POLE CONTACTOR MAY BE USED ON MODELS HAVING A LOW WATTAGE HEATER

ELECTRIC SERVICE

STANDARD PARTS

120/208/3Ø/4 WIRE
 120/208/1Ø/3 WIRE
 120/240/1Ø/3 WIRE

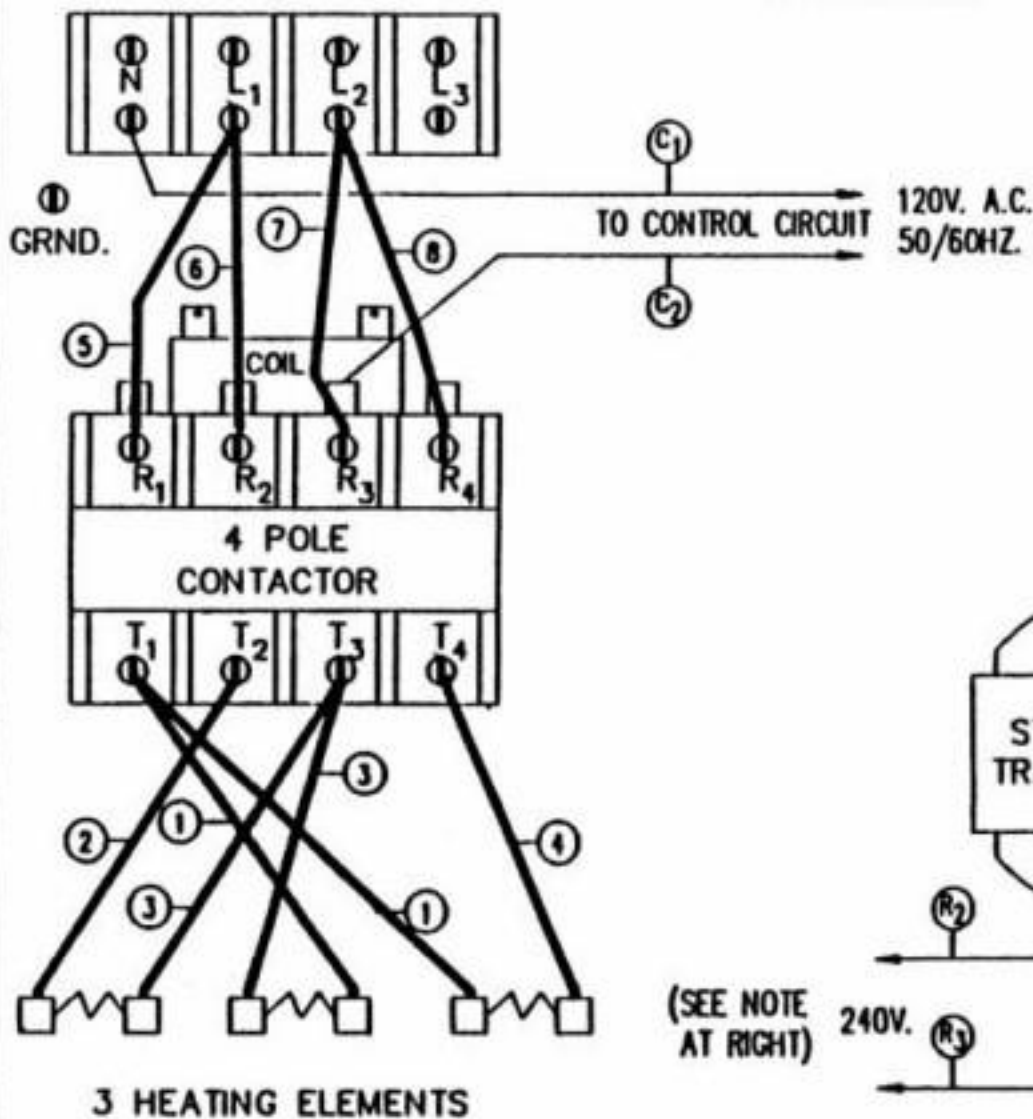
REQUIRES CIRCUIT BREAKER FOR CONTROL CIRCUIT PROTECTION. NEUTRAL TERMINAL BLOCK PROVIDED.

208/1Ø/2 WIRE
 240/1Ø/2 WIRE
 240/3Ø/3 WIRE
 208/3Ø/3 WIRE

NO NEUTRAL TERMINAL BLOCK SUPPLIED. NON PUMP TYPE URNS INCLUDE STEPDOWN TRANSFORMER OR SEPARATE 120V CORD FOR CONTROL CIRCUIT. PUMP TYPE AND REMOTE DISPENSING URNS HAVE SEPARATE 120V CORD FOR CONTROL CIRCUIT.

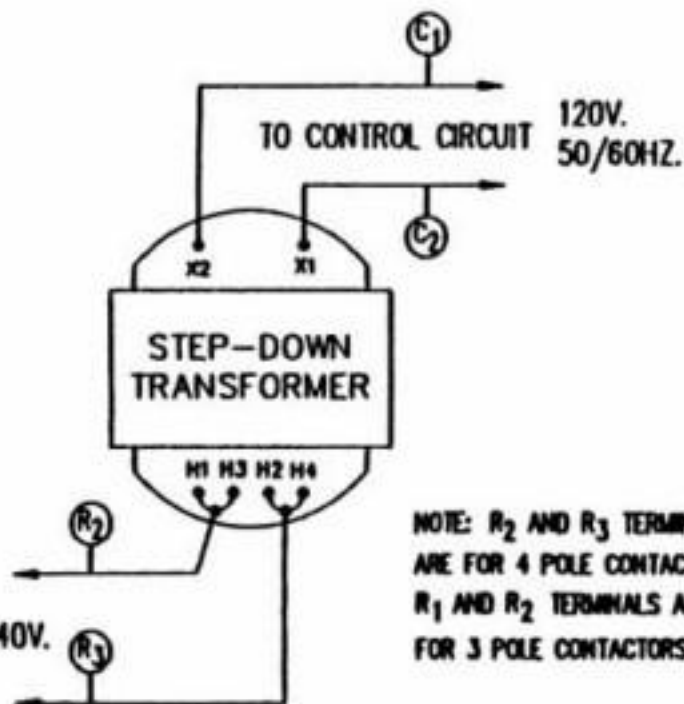
CONNECT POWER HERE

SEE ELECTRICAL NAMEPLATE FOR PROPER VOLTAGE, PHASE AND NUMBER OF WIRES AND AMPERE LOAD.



SINGLE PHASE WIRING SHOWN TO CONVERT TO THREE PHASE Δ

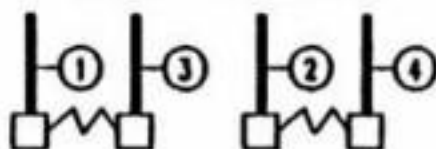
- 1) MOVE WIRE ⑤ FROM L₁ TO L₃.
- 2) MOVE WIRE ④ FROM T₄ TO T₂.



NOTE: R₂ AND R₃ TERMINALS SHOWN ARE FOR 4 POLE CONTACTORS. R₁ AND R₂ TERMINALS ARE USED FOR 3 POLE CONTACTORS.

(SEE NOTE AT RIGHT)

3 HEATING ELEMENTS

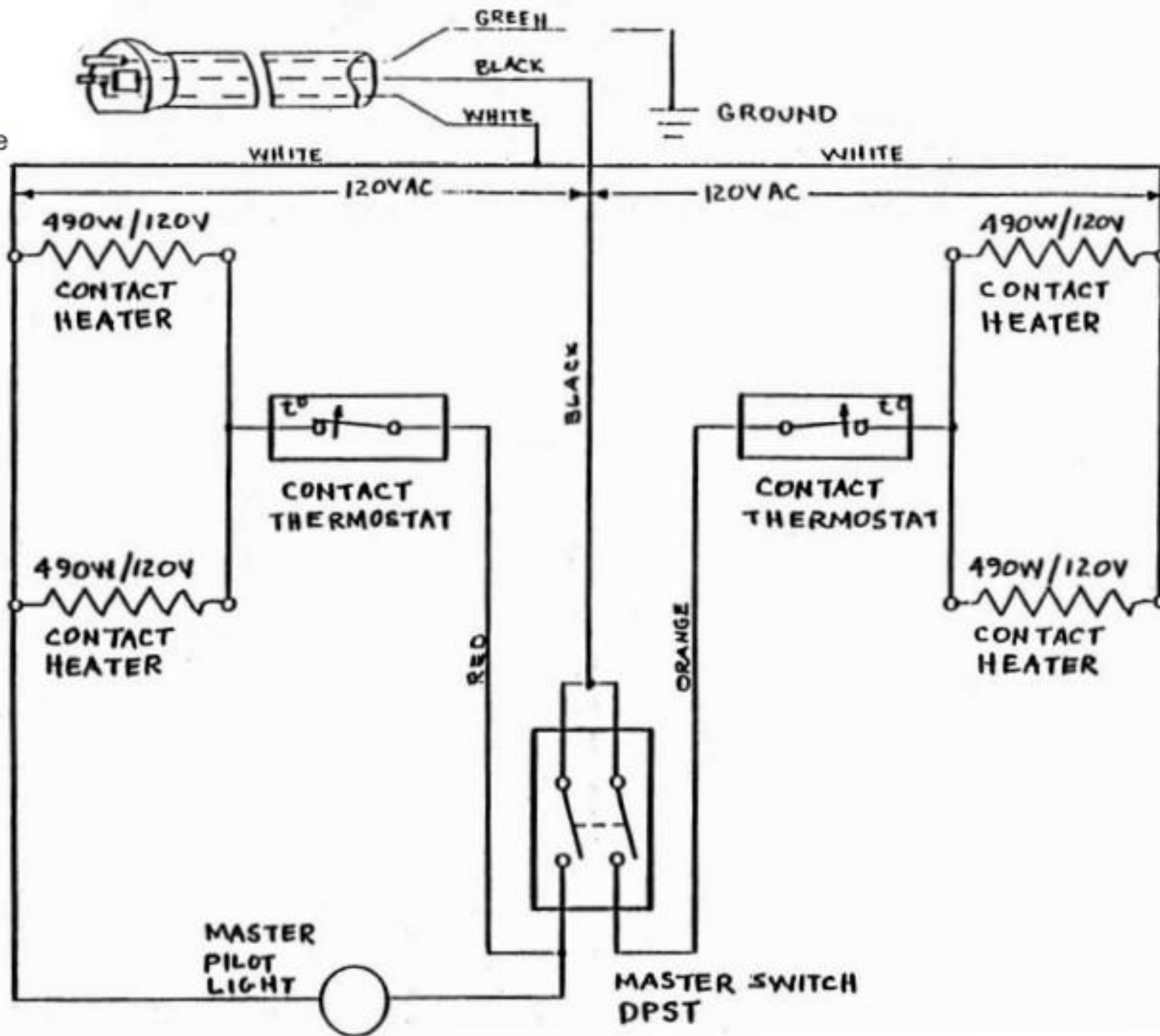


2 HEATING ELEMENTS - SINGLE PHASE ONLY
 DO NOT WIRE 2 ELEMENTS 3 PHASE

NEUTRAL TERMINAL BLOCK NOT SUPPLIED WITH TRANSFORMER

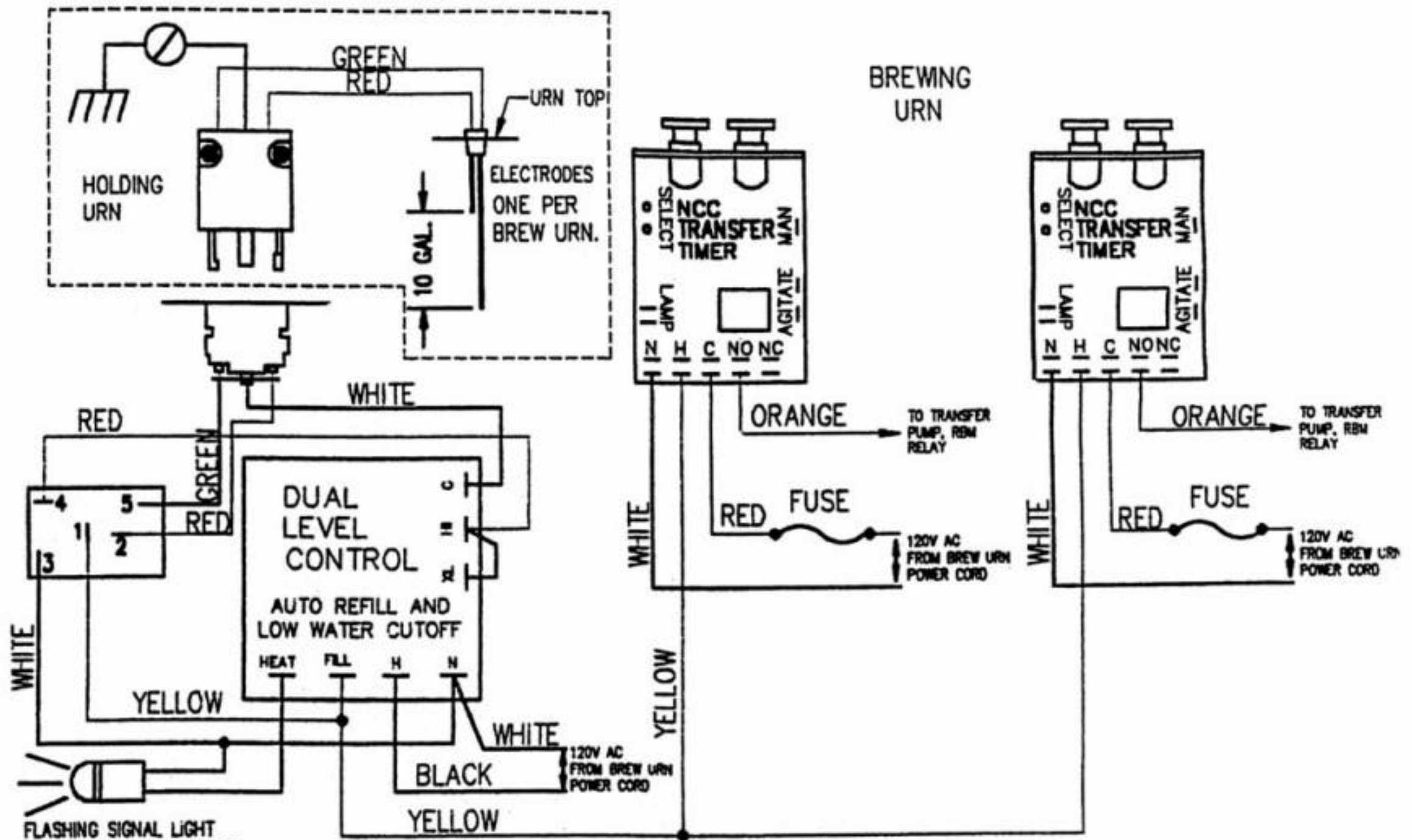
REVISIONS			AMERICAN METAL WARE	
NO.	DATE / ECH	BY		
A			STD., TOL.: .XXX ₂ .005, .XX ₂ .010, FRACTIONS ± 1/64, ANGLES ± 1°	
B			SCALE	MATL
C			DRAWN BY GP	CHK'D APP'D
D			DATE 3-29-88	DATE DATE
E			PRE TAB TERMINAL HEATER WIRING-208-240V URNS	
F			DRAWING NO. 091-227	

Includes 6 foot long,
3 wire cord & plug.
Connect to 120V
AC, 20 amp circuit,
Use NEMA receptacle
No. 5-20R.



correct wire

REVISIONS			AMERICAN METAL WARE				
NO.	DATE	BY					
1			AMV HOLDING URN HEATER SCHEMATIC 2 KW, 120V, 1 ϕ , 16.5 AMP LOAD				
2							
3			DRAWN BY	LRO	SCALE	74	MATERIAL
4			CHK'D		DATE	12-23-80	DRAWING NO.
5			TRACES		APPS		A-1182



FLASHING SIGNAL LIGHT
TRANSFER CANNOT START
WHEN SIGNAL IS LIT—
—COFFEE LEVEL NEAR FULL
1 PER TRANSFER PUMP

- NOTE: (1) A SEPARATE, ISOLATED ELECTRODE AND 18/3 CORD WITH MIDGET TWIST LOCK CONNECTOR PROVIDED FOR EACH BREW URN IN SYSTEM
(2) TRANSFER TIMERS LOCATED IN PUMP HOUSING ON SIDES OF BANQUET BREW URN
(3) SEE CONTROL CIRCUIT SCHEMATIC FOR OTHER WIRING DETAILS

REVISIONS		
NO.	DATE / ECN	BY
A		
B		
C		
D		
E		



AMERICAN METAL WARE

WIRING DIAGRAM
OPT.121 OVERFILL PROTECTION
FOR AMV COFFEE HOLDING URN

DATE
4-22-93
DRAWN BY
WK
DRAWING NO.
091-418