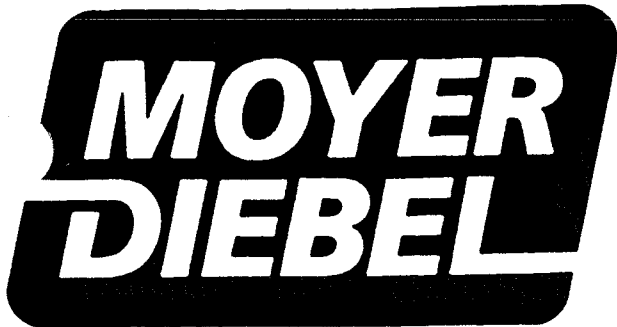


Service Parts

DOL-FYNM4

***Simply
Engineered
Better***

0503357



WARRANTY

DF **SW400** **SW600** **500T** **500HT**

Glass and Warewashers manufactured by Moyer Diebel are warranted to the original purchaser as follows:

They shall be free of defective parts and workmanship and if fault is found, the defective part shall be repaired or replaced at the option of Moyer Diebel if notice is given within 12 months of the date of shipment from the factory.

In addition to the parts and workmanship warranty, Moyer Diebel warrants to the original purchaser of glasswashers, that for those glasswashers installed within an area (50 mile/80 km radius) normally serviced by a Moyer Diebel authorized service agent; to provide free installation of parts for the first 90 days following the installation date accepted by Moyer Diebel and to provide free installation of parts for the first year following the installation date accepted by Moyer Diebel for the 500TM2 and 500HT models.

These warranties are subject to:

1. No accident, misuse, or abuse befell the machine, and the handbook was read and its instructions followed.
2. After the 90 day period defined above, for glasswashers, the defective part(s) is returned to the service agent or factory F.O.B. destination, whereupon parts determined to be defective, under the terms of the warranty, by a factory engineer, shall be repaired or replaced and the item returned to the purchaser.
3. The above labour and parts coverage is applicable from the date of start-up accepted by Moyer Diebel and only if start-up was performed by an authorized Moyer Diebel service agent. If start-up date not advised, invoice date applies. Start-up must be performed within 10 days of installation. Shipment of warranty parts will be sent by Moyer Diebel's normal procedure. Shipments such as air freight, or next day delivery will be the responsibility of the party requesting the service.

(START-UP FOR 500 SERIES OPTIONAL IN U.S. ONLY)

4. ADJUSTMENT OF CHEMICAL FEEDERS, WATER AND THERMOSTAT LEVELS ARE NOT COVERED UNDER WARRANTY SERVICE. ADVISE ACCOUNT TO CONTACT CHEMICAL SUPPLIER.
5. CLEANING OF DRAINS, SPRAY TUBES, SCREENS, ETC. ARE THE RESPONSIBILITY OF THE MACHINE LOCATION'S STAFF AND NOT COVERED BY WARRANTY.
6. Failure to keep thermostats and chemical feeders properly adjusted; drain, spray tubes and screens clean, may void the warranty.
7. Service calls due to neglect of cleaning, maintenance, or abuse during warranty period will NOT be covered by Moyer Diebel, but must be the responsibility of the party requesting the service.
8. Charges above the Authorized Service Agency's normal rates (such as overtime) are to be billed to the party requesting service.
9. The above warranty coverage applies only in areas normally covered by an Authorized Service Agency.
10. Travel charges such as time and mileage for service calls made outside the normal area of coverage (50 miles or 80 km) of the Authorized Service Agency is the responsibility of the party requesting service.

No liability may be assumed for consequential damage to other parts from failure to repair or replace defective parts.

Use of chemical feed systems not furnished or authorized by Moyer Diebel voids the warranty.

Use of parts not supplied by Moyer Diebel to repair Moyer Diebel equipment voids the warranty.

Use of parts supplied by Moyer Diebel and used on machines of other manufacturers voids the parts warranty.

The obligations of the company are limited to statute, common law otherwise and the company, its servants and agents shall not be liable for any claims for personal injuries or consequential damage or loss, howsoever caused.

This is the sole warranty of the manufacturer, despite any other representation implied or expressed by any person, company or corporation connected in any way with the manufacturer.

MOYER DIEBEL
PRODUCT WARRANTY
NEW MACHINES

UNDER COUNTER WARE WASHERS

All Ware Washer models manufactured by Moyer Diebel are warranted to the original purchaser as follows:

They shall be free of defective parts and workmanship and if fault is found, the defective part shall be repaired or replaced at the option of Moyer Diebel if notice is given within 1 year of the date of start-up as shown on the start-up certificate, provided that date does not exceed 12 months from shipment from the factory.

In addition to the parts and workmanship warranty, Moyer Diebel warrants to the original purchaser; that for those washers installed within an area (50 mile/80 km radius) normally serviced by a Moyer Diebel authorized service agent; to provide free installation of parts during normal business hours for **ONE CALENDAR YEAR** following the installation date accepted by Moyer Diebel.

GLASS WASHERS

All Glass Washer Models have a limited warranty application. All Glass Washer components shall be free of defective parts and workmanship and if fault is found, the defective part shall be repaired or replaced at the option of Moyer Diebel if notice is given within 12 months of the date of shipment from the factory.

In addition to the parts and workmanship warranty, Moyer Diebel warrants to the original purchaser; that for those washers installed within an area (50 mile/80 km radius) normally serviced by a Moyer Diebel authorized service agent; to provide free installation of parts for the first **90 DAYS** following the installation date accepted by Moyer Diebel.

REPLACEMENT PARTS

Replacement parts are warranted for 90 days from date of installation, or to the end of the original machine warranty, whichever date occurs last, when installed by an authorized service agency or approved by the factory. Warranty does not apply when replacement part is installed by others.

**PAGE LEFT
INTENTIONALLY
BLANK**

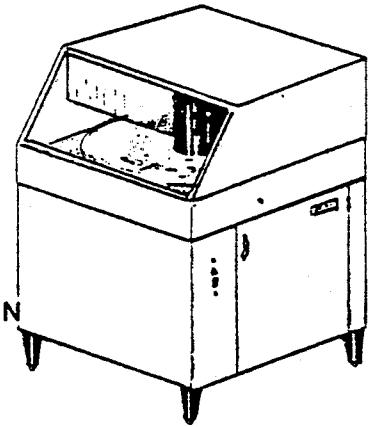
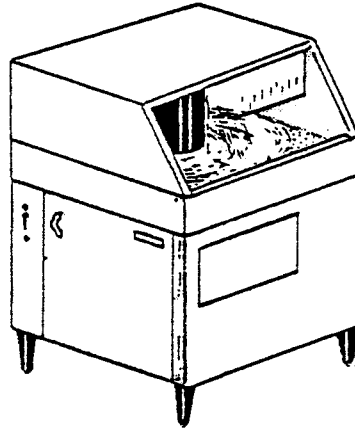
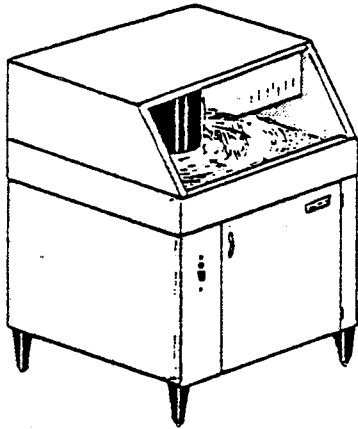
SERVICE

DOL-FYNM4

DOL-FYN-2M4

DOL-FYNM4

DOL-FYN-1M4



COUNTERCLOCKWISE ROTATION

CLOCKWISE ROTATION

CLOCKWISE ROTATION

CONGRATULATIONS! YOU HAVE JUST PURCHASED A HIGH QUALITY APPLIANCE THAT WILL GIVE YOU MANY YEARS OF DEPENDABLE SERVICE. WITH PROPER MAINTENANCE AND CLEANING, YOUR DOLFYN AUTOMATIC GLASS WASHER WILL OPERATE TROUBLE FREE.

THE SIMPLE INSTRUCTIONS AND ILLUSTRATIONS CONTAINED IN THIS HANDBOOK ANSWER ALL QUESTIONS RELATIVE TO INSTALLATION, MAINTENANCE AND OPERATION. FOLLOW THEM CAREFULLY

LISTED BY



LISTED BY



LISTED BY



CONTENTS

SERVICE

DOLFYN

PAGES:

INSTALLATION	8
OPERATION	11
CLEANING	14
PLUMBING DIAGRAM	16
ELECTRICAL DIAGRAM	17
TROUBLE GUIDE	18

PARTS

DOLFYN

PAGES:

PLATES:

CABINET AND WASH COMPONENTS	25	731A
DRIVE COMPLETE	27	8B
ELECTRIC BOX	29	952
DETERGENT TANK	31	711
FLOAT BOX	33	683
FLOW METER ASSEMBLY	35	743A
PUMP COMPLETE	37	706
DETERGENT TIMER & OSCILLATING PUMP	39	894
INLET PLUMBING	41	738
SANITIZER PLUMBING	43	734A
VACUUM BREAKER	45	714
WASH AND RINSE PLUMBING	47	713A
ACCESSORIES	49	732
RINSE INJECTOR BOX	51	953
PUMP RINSE INJECTOR	53	954

EFFECTIVE AT SERIAL NUMBER 84DFM4 11418 TO 11527

MOYER DIEBEL

P.O. BOX 4183
WINSTON-SALEM, N.C.
27115

1-800-228-8350 1-919-723-2289



MOYER DIEBEL

P.O. BOX 301, G.E.W.
JORDAN STATION, ONT.
LOR 1S0

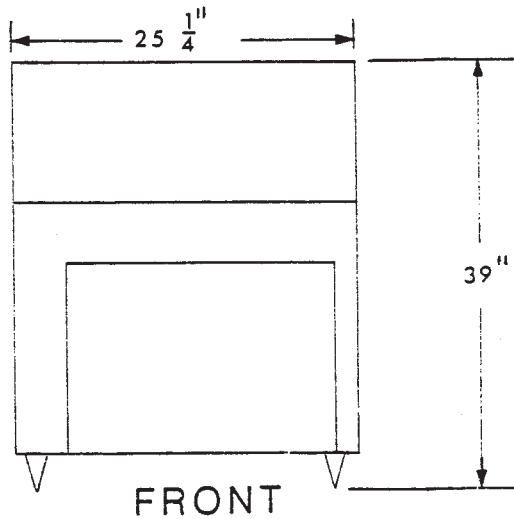
416-562-4195 FAX 416-562-4518

INSTALLATION

DFM4 MDM

MEASUREMENTS

The Dolfyn glass washer is 25 1/4" wide x 25 1/8" deep. The height is 39" with an adjustment of up to 1 3/4" in height. (Please allow sufficient space for under bar installation.)



PLUMBING

Have all of the plumbing roughed in and checked out according to fig. 1. Vacuum breaker is factory installed.

Minimum line pressure - cold and hot water - 25 p.s.i.

Maximum line pressure - cold and hot water - 95 p.s.i.

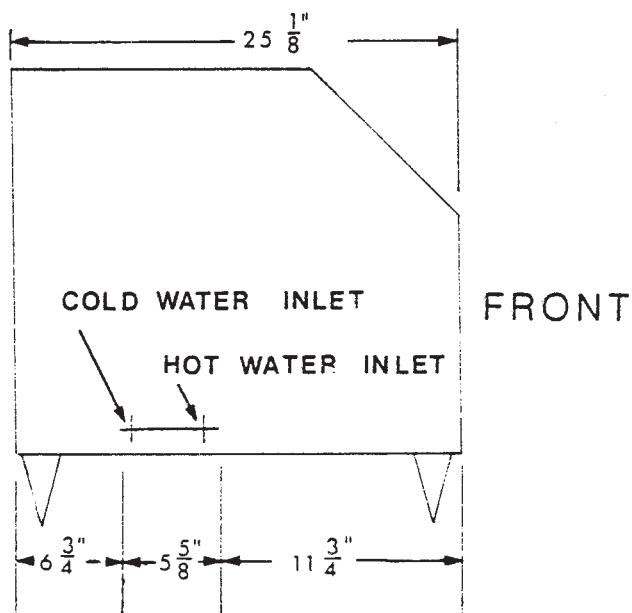


FIG. 1

INSTALLATION

DFM4 MDM

WATER

Set in desired location and level. Ensure that all of the bullet feet are in contact with the floor.

Install check valves on hot and cold water inlets, as close as possible to the solenoid valves.

1/2" IPS for ambient temperature water.

1/2" IPS for hot water. Water temperature should be 145°F at filler spout. Have stop valve in the closed position for cold water rinsing.

WARNING: Detergent tank float is packed in the down position for shipping. The packing must be removed before operation.

STOP VALVE

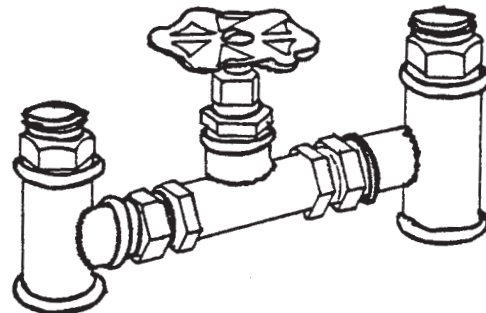
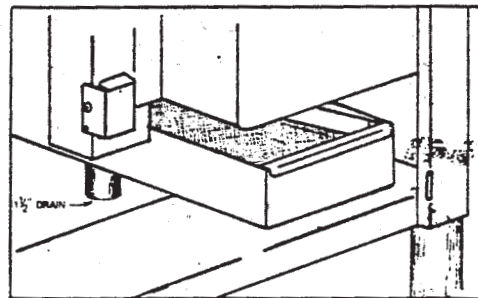


FIG. 2

DRAIN

Connect roughed-in drain to 1 1/2" O.D. tailpiece on glass washer.



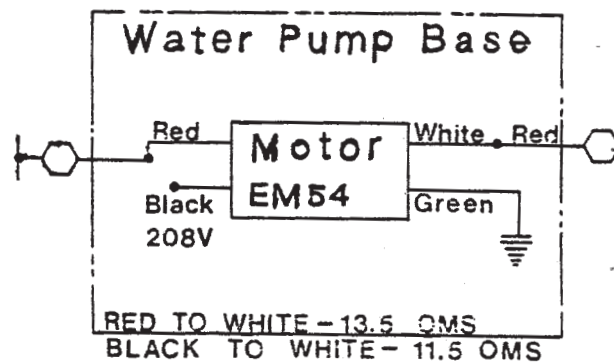
ELECTRICAL

The glass washer has a six foot power cord with a "U" ground tandem plug for connection to the power receptacle.

INSTRUCTIONS FOR 208 VOLT OPERATION

1. If voltage at the receptacle is 208 volts, a wiring change should be made in the base of the water pump.
2. The four wire cable from the water pump motor into the base has a red wire and a loose black wire. Change the red with the black at the connector. The red wire will now be taped and loose, and the black will be connected to a black for the operation on 208 volts.
3. All other electrical components operate satisfactorily on 208 volts without modification.

Provide a nonlocking 250 volt, 15 ampere 2 pole 3 wire grounding receptacle within four feet of the base of the glass washer. This should be installed by a qualified electrician to meet the specifications of the local electrical code.

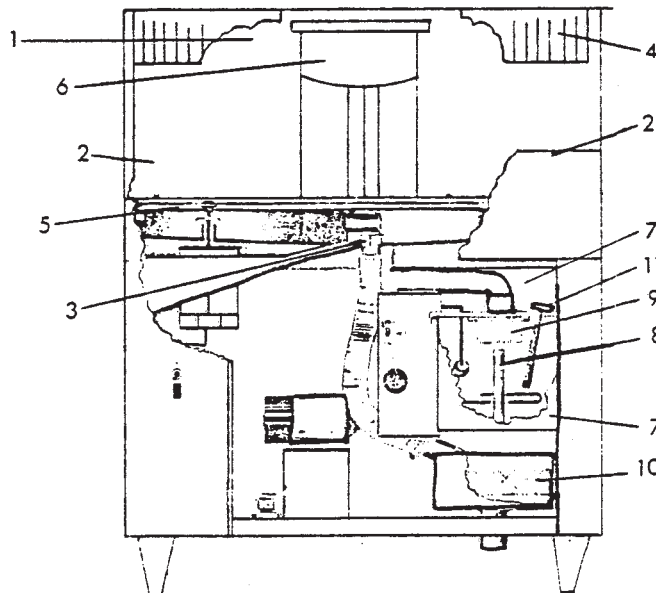


INSTALLATION

DFM4 MDM

INSTALLATION

1. Remove packing plate from the top of the conveyor stack.
2. Remove all packing from glass operated switch and right and left hand trays. Check that right and left hand trays are positioned properly.
3. Check that drain deflector is secure in rinse drain.
4. Check the position of the splash curtain.
5. Check that conveyor is level and the drive wheel is engaged in the conveyor's outer rim.
6. Raise extension sleeve on conveyor until the three clips engage with the top of the conveyor stack.
7. Remove packing from within and above the detergent tank.
8. Ensure the standpipe is in position.
9. Ensure the detergent screen in detergent tank is in position.
10. Check that the lower drain screen is in position.
11. Replace detergent tank cover and thermometer.



OPERATION

DFM4
MDM

DETERGENT AND SANITIZER CONTROL

WATER

1. The detergent tank is equipped with a float control that operates two cam operated switches.
2. The water temperature is controlled between 120 F and 160 F with a heater and a thermostat.

CAM "A" - HEATER CAM

CAM "B" - WATER LEVEL CONTROL CAM

To Fill Detergent Tank

Ensure stand pipe is in place (fig. 3)
Put switch "C" to AUTO position. Water will flow until proper level is reached. It will shut off automatically.

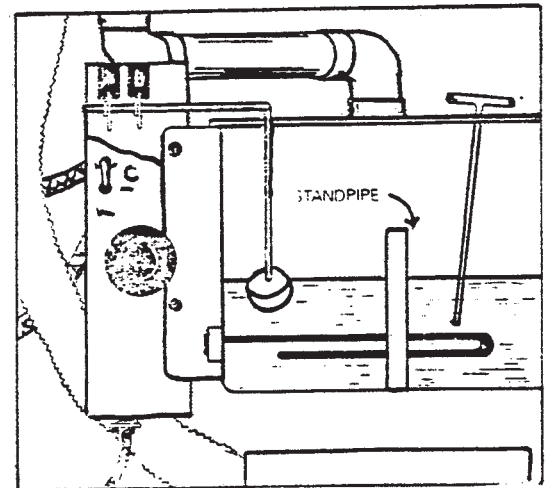


FIG. 3

DETERGENT is fed from the supply container into the detergent tank in controlled amounts by the oscillating pump. Use at a strength of 0.2% or as recommended by your chemical supplier to accomplish the necessary cleaning job.

Note: Use a heavy duty non-chlorinated liquid detergent manufactured specifically for glassware washing machinery.

Your chemical representative will test the solution to ensure the proper strength as recommended.

NOTE:

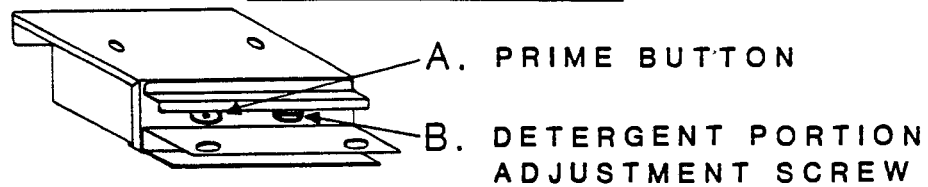
MANY OF THE DETERGENTS USED IN GLASS AND DISHWASHERS ARE HARMFUL TO THE SKIN IN THEIR CONCENTRATED FORM.

TO PREVENT ACCIDENTAL EXPOSURE TO THIS DANGER, BE SURE ALL HOSES ARE SECURE AND CLAMPED AFTER SERVICE TO MACHINES.

OPERATION

DFM4 MDM

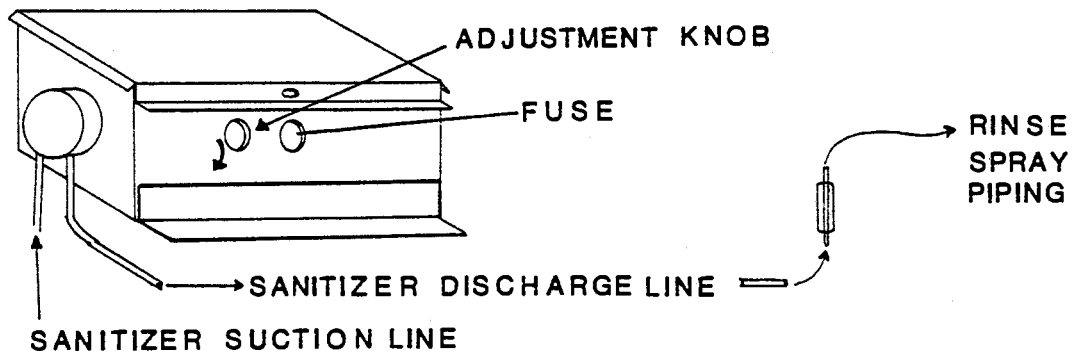
DETERGENT TIMER & OSCILLATING PUMP



TO ADJUST DETERGENT FEEDER:

1. WHEN A NEW DETERGENT CONTAINER IS INSTALLED, PUSH PRIME BUTTON IN AND HOLD UNTIL DETERGENT FEED TUBES ARE FULL.
2. INSTALL DETERGENT TANK STANDPIPE AND SWITCH TANK FILL TOGGLE SWITCH TO "AUTO" POSITION. THE DETERGENT FEEDER WILL NOW FEED DETERGENT INTO THE DETERGENT TANK IN PULSES EVERY 7.5 SECONDS OF FILL TIME
3. TO INCREASE DETERGENT VOLUME, TURN THE DETERGENT PORTION ADJUSTMENT SCREW (B) COUNTER CLOCKWISE.
4. TO DECREASE DETERGENT VOLUME, TIGHTEN THE DETERGENT PORTION ADJUSTMENT SCREW (B) IN A CLOCKWISE DIRECTION.

RINSE INJECTOR



TO SET RINSE INJECTOR:

THE SANITIZER IS AUTOMATICALLY FED INTO THE LINE THROUGH THE PUMP RINSE INJECTOR. INJECTION IS INTO THE FINAL RINSE SPRAYS.

1. START THE WASHER - TAKE SAMPLE FROM FINAL RINSE SPRAY TUBES.
2. TO INCREASE VOLUME OF SANITIZER - TURN ADJUSTMENT KNOB CLOCKWISE.
3. TO DECREASE VOLUME OF SANITIZER - TURN ADJUSTMENT KNOB COUNTERCLOCKWISE.

NOTE: ABOVE ONLY ALLOWS FOR TESTING THE SANITIZER BEING FED. ACTUAL SANITIZING RINSE SOLUTION SHOULD BE TESTED BY YOUR CHEMICAL SUPPLIER REPRESENTATIVE.

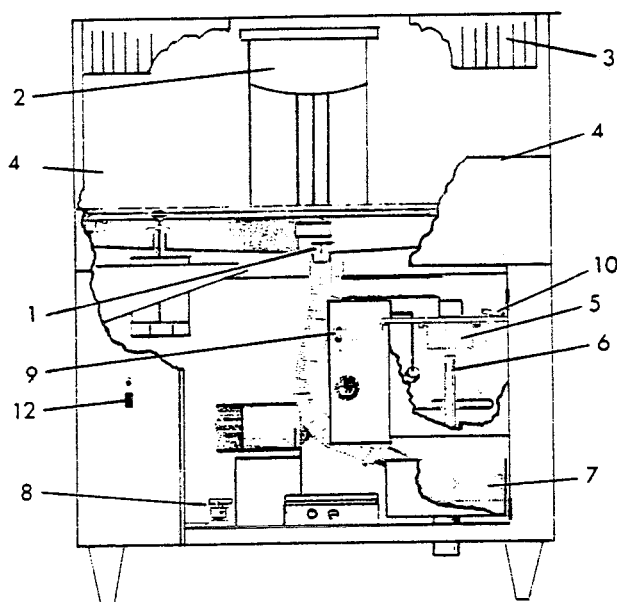
NOTE: TO MEET THE REQUIREMENTS OF N.S.F. STANDARDS, IODOPHOR IN A CONCENTRATION OF 12.5 P.P.M. MUST BE USED IN FINAL RINSE.

OPERATION

DFM4 MDM

DAILY CHECKOUT

1. Drain Deflector is in position in rinse drain.
2. Extension Sleeve of the conveyor is in top position.
3. Splash curtain in position.
4. Right Hand & Left Hand trays in position.
5. Detergent screen for wash water is clean and in place.
6. Standpipe in detergent tank in place.
7. Bottom drain screen in position.
8. Stop valve closed (for cold pre and final rinse).
9. Place filler valve switch in "AUTO" position.
10. Wait for detergent tank water to reach desired temperature.
11. Check detergent and sterilizer supply.
12. Switch glasswasher on.

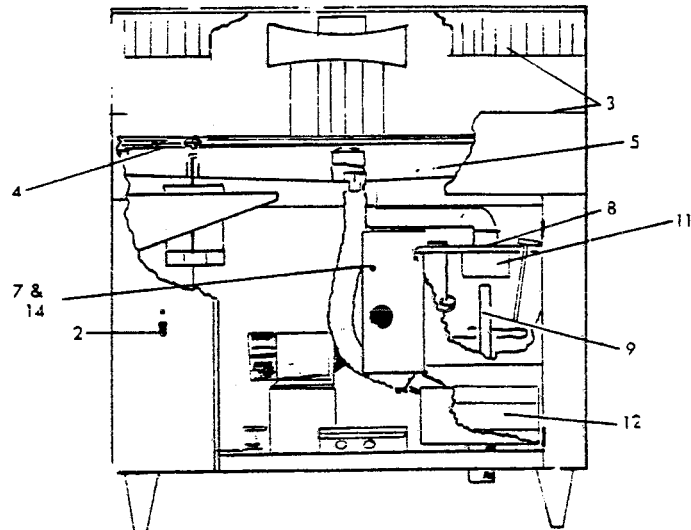


CLEANING

DFM4 MDM

DAILY CLEANING INSTRUCTIONS

1. Run glassware through machine - then clear conveyor of glassware.
 2. Turn off machine.
 3. Remove RH & LH trays and splash curtain. Wash with hot soapy water.
 4. Remove conveyor as follows:
 - lower extension sleeve on centre of conveyor (pull down).
 - lift up back of conveyor until free of drive wheel.
 - raise front of conveyor and remove from wash section.
 5. Clean out wash and rinse area with hot soapy water.
 6. Replace RH & LH trays, splash curtain and conveyor. Ensure conveyor is level and engaged with drive wheel. Raise extension sleeve.
 7. Turn auto fill switch of "OFF" position.
 8. Remove front half cover of detergent tank.
 9. Remove standpipe in detergent tank.
 10. Wash down interior of detergent tank and flush out.
- NOTE: When machine is not used for extended periods such as overnight - drain the detergent tank, flush with fresh water & allow to air dry. Do not refill tank till required for operation.
11. Remove detergent screen from detergent tank and clean.
 12. Remove drain screen from below detergent tank and clean.
 13. Replace items 12,11,9, and 8.
 14. Turn fill switch to "AUTO" position.
 15. Ensure there is product in detergent and sanitizer containers.
 16. Check detergent and sanitizer feed lines to ensure that they are in place and securely clamped.



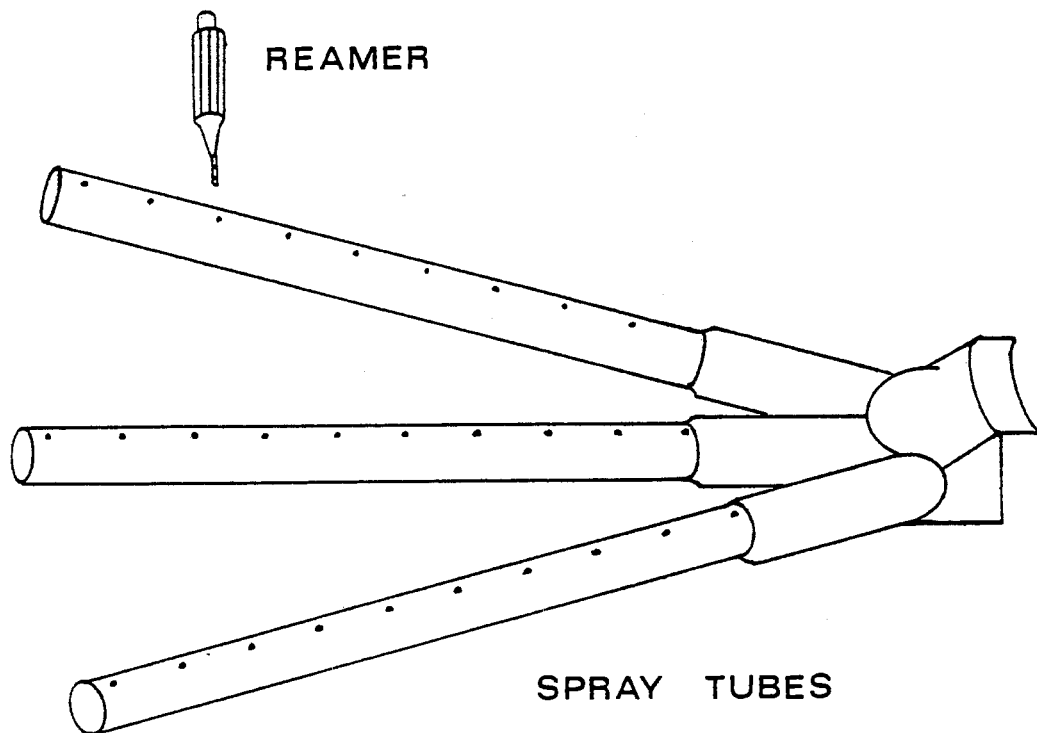
CLEANING

DFM4 MDM

WEEKLY CLEANING INSTRUCTIONS

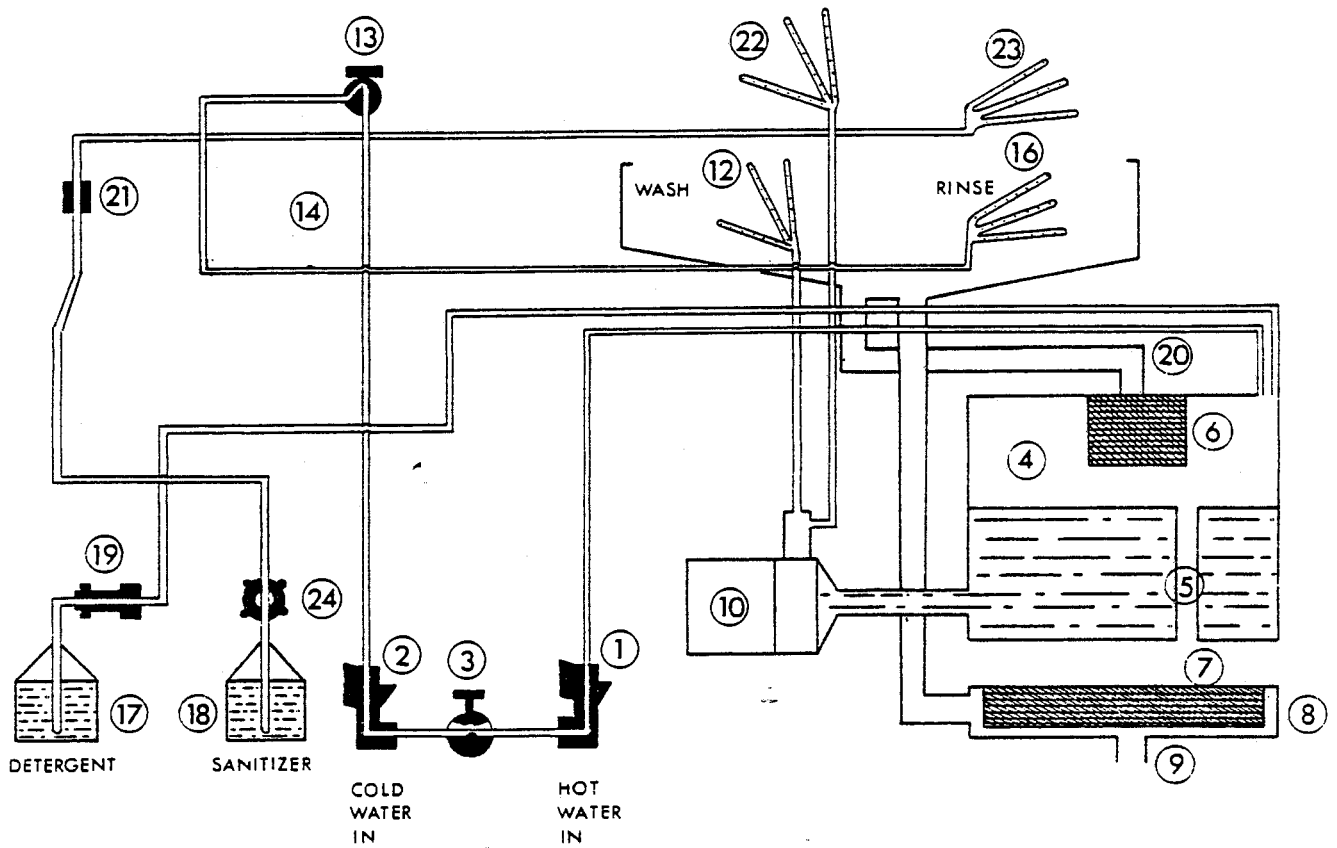
In Addition To Daily Cleaning Instructions.

1. Remove spray tube banks from manifold and clean spray tubes with reamer, brush and tube scraper provided.
2. Remove detergent and sanitizer feed lines from their respective containers. Place feed lines in a container of hot water. Operate washer until flushed out. Replace feed lines in their respective containers.



PLUMBING DIAGRAM

DFM4



- | | |
|--------------------------------------|--------------------------------------|
| 1. SOLENOID VALVE - HOT WATER INLET | 13. VACUUM BREAKER |
| 2. SOLENOID VALVE - COLD WATER INLET | 14. PRESSURE GAUGE |
| 3. STOP VALVE | |
| 4. DETERGENT TANK | 16. BOTTOM RINSE SPRAY TUBE ASSEMBLY |
| 5. STAND PIPE | 17. DETERGENT SUPPLY |
| 6. DETERGENT SCREEN ASSEMBLY | 18. SANITIZER SUPPLY |
| 7. DRAIN SCREEN ASSEMBLY | 19. OSCILLATING PUMP |
| 8. DRAIN PAN ASSEMBLY | 20. WATER RETURN ASSEMBLY |
| 9. DRAIN ASSEMBLY | 21. FLOW METER - SANITIZER |
| 10. WATER PUMP | 22. TOP WASH SPRAY TUBE ASSEMBLY |
| 12. BOTTOM WASH SPRAY TUBE ASSEMBLY | 23. TOP RINSE SPRAY TUBE ASSEMBLY |
| | 24. SANITIZER INJECTION PUMP |

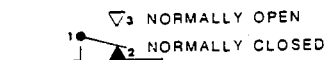
ELECTRICAL DIAGRAM

DFM4 MDM

ELECTRICAL DIAGRAM

THE CIRCUIT IS SHOWN WITH DETERGENT TANK FILLED AND UP TO TEMPERATURE
RINSE VALVE SOLENOID ENERGISED. DRIVE AND PUMP MOTORS OPERATING.

SWITCHES

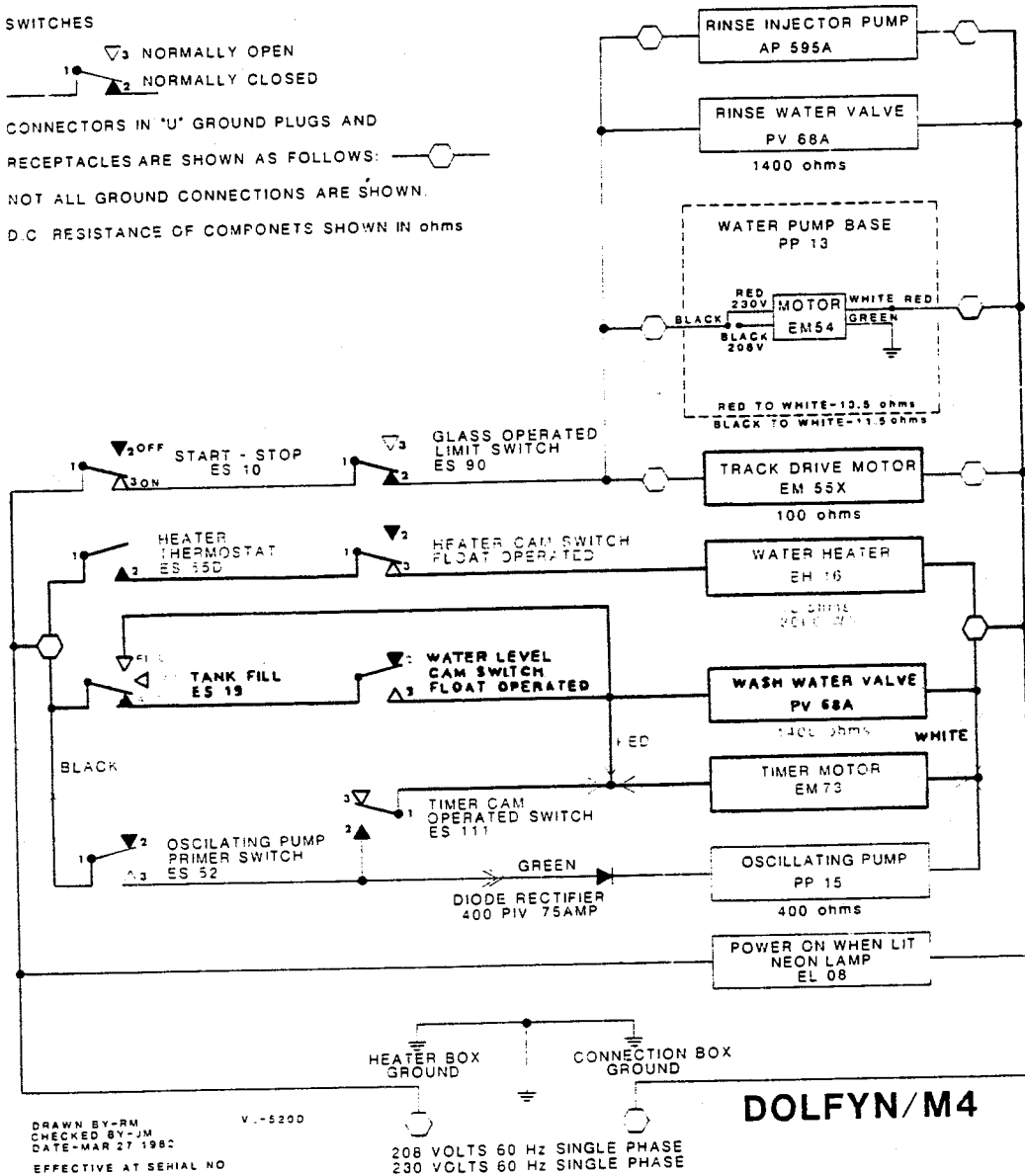


CONNECTORS IN 'U' GROUND PLUGS AND
RECEPTACLES ARE SHOWN AS FOLLOWS:



NOT ALL GROUND CONNECTIONS ARE SHOWN.

D.C. RESISTANCE OF COMPONENTS SHOWN IN ohms



DRAWN BY-RM
CHECKED BY-JM
DATE-MAR 27 1962
EFFECTIVE AT SERIAL NO

V.-5200

DOLFYN/M4

TROUBLE GUIDE

DFM4 MDM

1. CONVEYOR DOES NOT TURN

CAUSE	SOLUTION
1. No power.	1. Check fuse panel.
2. Drive motor cord not plugged into receptacle.	2. Plug into receptacle labelled drive.
3. Drive motor burnt out.	3. Replace drive motor.
4. Drive sprocket is slipping.	4. Tighten set screw.
5. Drive chain too slack.	5. Adjust drive chain tension.
6. Drive chain seized or broken.	6. Lubricate drive chain or replace.
7. Obstruction in wash or rinse.	7. Remove obstruction.
8. Micro switch in conveyor selector switch box faulty or not making contact.	8. Adjust to make contact or replace if faulty.
9. Conveyor mounting bracket not in position.	9. Position properly.

2. OVERSPRAY FROM HOOD SECTION

CAUSE	SOLUTION
1. Splash curtain not in position.	1. Install splash curtains.
2. Washer running without any glasses on conveyor.	2. Keep conveyor loaded with glasses.
3. Spray tubes at wrong angle.	3. Check spray tube ends are in slots provided to ensure proper spray angle.
4. Spray tubes plugged.	4. Clean thoroughly with reamer, brush and drill. Clear line of cause.

TROUBLE GUIDE

DFM4 MDM

3. HOT WATER BELOW REQUIRED TEMPERATURE IN DETERGENT TANK

CAUSE	SOLUTION
1. Thermostat set too low.	1. Increase temperature by turning thermostat knob clockwise.
2. Heater not on.	2. (a) Check for power to machine. (b) Check for power to receptacle labelled heater. (c) Check that heater cord is plugged into receptacle labelled heater. (d) Check that Cam is operating ES-51 heater switch. (e) Check for power from heater switch to thermostat. Replace if necessary.
3. Heater burnt out.	3. Replace heater. Check Cam setting on float rod to ensure low water level cut-off cam operates micro switch.
4. Thermostat defective.	4. Replace.
5. Incoming water too cold.	5. Incoming water should be at 145 F, otherwise allow detergent tank heater time to bring water temperature up to 145 F.

4. LACK OF SPRAY PRESSURE IN RINSE SPRAY TUBES

CAUSE	SOLUTION
1. Shut-off valve on supply line closed.	1. Open valve.
2. Low water pressure.	2. Have pressure test taken on main cold line to machine. Pressure must be at least 25 P.S.I.
3. Rinse solenoid will not operate.	3. (a) Replace coil if necessary. (b) Check power to machine.
4. Rinse solenoid strainer plugged.	4. Clean or replace.
5. Spray tubes plugged or supply line plugged.	5. Clean thoroughly with reamer, brush & drill provided. Clear line of cause.

TROUBLE GUIDE

DFM4 MDM

5. LACK OF PRESSURE AT WASH SPRAY TUBES

CAUSE	SOLUTION
1. No water in detergent tank.	1. (a) Make sure standpipe is in place in tank. (b) Check that fill switch is in AUTO position and that tank fills. (c) Make sure that fill switch is operated by float cam. (d) Check that fill solenoid is operating. Replace if necessary.
2. Pump not operating.	2. (a) Check power supply to machine. (b) Check that pump cord is plugged into receptacle labelled pump. (c) Replace pump if defective.
3. Pump not operating properly.	3. (a) Replace pump impeller if defective. (b) Check for voltage drop.
4. Wash spray tubes dirty.	4. Clean thoroughly with reamer, brush and pin drill provided.
5. Supply line plugged.	5. Clear line of cause.

6. CONTINUAL FLOW OF COLD WATER THROUGH SPRAY TUBES WITH MACHINE OFF

CAUSE	SOLUTION
1. Solenoid valve in cold line not seating.	1. (a) Turn off water supply. (b) Take apart and clean thoroughly. (c) If above does not cure, replace plunger and seat.

TROUBLE GUIDE

DFM4 MDM

7. CONTINUAL FLOW OF HOT WATER TO DETERGENT TANK

CAUSE	SOLUTION
1. Solenoid valve in hot line not seating.	1. (a) Turn off hot water supply. (b) Take apart and clean thoroughly. (c) If above does not cure, replace plunger and seat.

8. WATER ON FLOOR

CAUSE	SOLUTION
1. Pump seal leaking	1. Replace seal.
2. Rinse drain in wash tank plugged.	2. Clear obstruction.
3. Wash drain in wash tank plugged.	3. Clear obstruction.
4. Detergent screen in detergent tank is plugged.	4. Clean screen.
5. Drain screen under detergent tank plugged.	5. Clean screen.
6. Main drain plugged.	6. Clean drain.

9. DETERGENT NOT FEEDING

CAUSE	SOLUTION
1. No detergent in container.	1. Refill container.
2. Detergent crystallized or turned to gel form. This plugs the line and detergent feeder.	2. Clean out feed line and feeder. Use a fresh supply of detergent.
3. Foot valve at bottom of feed line in detergent container plugged.	3. Remove feed line from container and clean foot valve. Clean pump or replace if defective.

TROUBLE GUIDE

DFM4 MDM

- | | | | |
|----|--|----|---|
| 4. | Oscillating pump plugged or defective. | 4. | Clean pump or replace if defective. |
| 5. | No detergent being fed. | 5. | Adjustment screw turned in too far - loosen until pulse feed achieved |
| 6. | Detergent feeds constantly while fill is "ON". | 6. | Adjustment screw must be tightened in until pulse feed achieved. |
| 7. | Adjustment screw does not affect feed rate. | 7. | Detergent feeder control defective - repair. |

10. SANITIZER NOT FEEDING

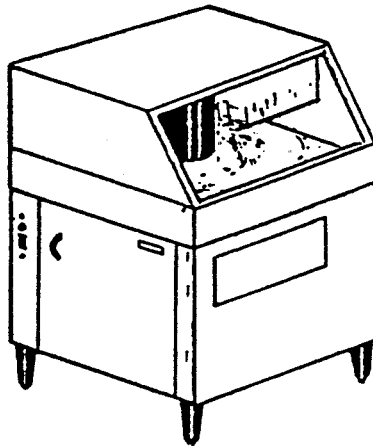
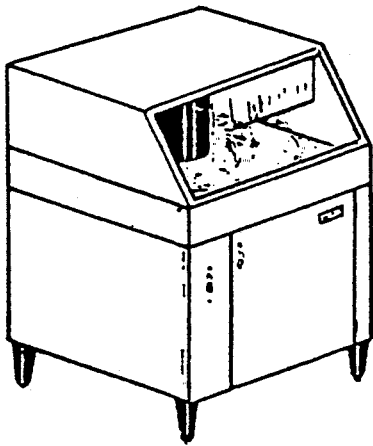
- | | | | |
|----|---|----|--|
| 1. | No sanitizer in container. | 1. | Refill container. |
| 2. | Sanitizer crystallized or turned to gel form, plugging the lines. | 2. | Clean feed lines and replace sanitizer with fresh supply. |
| 3. | Foot valve at end of feed line in container plugged. | 3. | Remove feed line from container and clean foot valve. |
| 4. | Sanitizer Feeder pump rollers not turning. | 4. | Check that power plug to feeder is plugged in. Turn feeder adjustment knob fully clockwise. If still not turning - repair. Tighten roller locking set screw, if found loose. |

PARTS

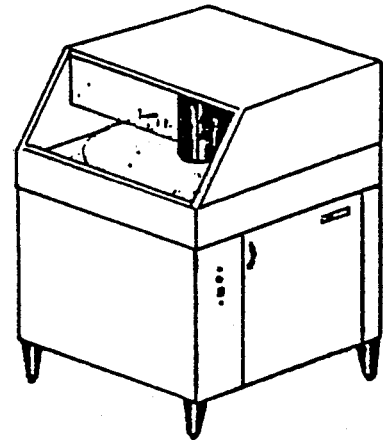
DOL-FYNM4

DOL-FYN-2M4

DOL-FYNM4



DOL-FYN-1M4



ORDERING INSTRUCTIONS

1. TO IDENTIFY THE PART THAT YOU WISH, LOCATE IT VISUALLY IN THE PARTS CATALOGUE AND REFER TO IT BY THE PLATE AND PART NUMBERS GIVEN.
2. PLACE YOUR ORDER FOR PARTS WITH YOUR DEALER OR SERVICE AGENT.

SERVICE

FOR COMPLETE SERVICE TO YOUR DOL-FYN,
CONTACT YOUR DEALER OR SERVICE AGENT.

1.	NOT AVAILABLE	1	CABINET WELDED ASSEMBLY DFM4, DF-1M4
	NOT AVAILABLE	1	CABINET WELDED ASSEMBLY DFM4-CCW, DF1M4-CCW, DF2M4, DF2M4-CCW
2.	0701142	1	TANK WELDED ASSEMBLY DFM4, DF-1M4
	0701143	1	TANK WELDED ASSEMBLY DF-2M4
3.	0701185	1	DOOR PANEL ASSEMBLY
4.	0501921	1	DOOR HANDLE
6.	0301003	1	TOP HOOD BOLTED
7.	0501885	1	MAGNETIC CATCH (NOT SHOWN)
9.	0501873	4	PLASTIC FOOT
10.	0301008	1	SWITCH SUPPORT BRACKET DFM4, DF-1M4
	0300874	1	SWITCH SUPPORT BRACKET DF-2M4
11.	0501413	2	#10-32 x 5/16 PAN HD MC SCREW
14.	0501483	1	3/4 OD .257 x 1/16 FLT CELT WASHER
15.	0501404	1	#10-32 x 3/8 RH MC SCREW - BRASS
16.	0501493	1	#10 LOCKWASHER EXTTOOTH - BRONZE
17.	0501533	2	#10-32 HEX NUT - BRASS
18.	0503649	1	#10 FLAT WASHER - BRASS
19.	0503592	1	GROUND LABEL
20.	0501382	1	TRIP SWITCH - SEALED
21.	0503723	1	#6-32 x 1 RH MC SCREW
22.	0301012	1	NUT PLATE
23.	0701011	1	SHUT OFF ROD ASSEMBLY
24.	0300848	1	ACTIVATOR ASSEMBLY DFM4, DF-1M4
	0300875	1	ACTIVATOR ASSEMBLY DF-2M4
25.	0501395	1	1/4-20 x 5/16 SS SOCK SET SCREW
46.	0701119	1	LH TRAY ASSEMBLY DF-2M4
26.	0701019	1	RH TRAY ASSEMBLY DFM4, DF-1M4
26.	0701128	1	RH TRAY ASSEMBLY DF-2M4
=====INCLUDES=====			
12.	0701128	1	RH TRAY WELDED ASSEMBLY
27A.	0503810	1	PLEXIGLASS DIVIDER
27B.	0501412	2	#10-32 x 3/8 SS MC SCREW
=====			
27.	0701026	1	LH TRAY ASSEMBLY DFM4, DF-1M4
=====INCLUDES=====			
13.	0701026	1	LH TRAY WELDED ASSEMBLY
27A.	0503810	1	PLEXIGLASS DIVIDER
27B.	0501412	2	#10-32 x 3/8 SS MC SCREW
=====			
28.	0707268	1	USE CONVEYOR KIT ASSEMBLY #0707268
29.	0701080	1	EXTENSION STUB
30.	0700354	1	DOLFYN CURTAIN ASSEMBLY
=====INCLUDES=====			
31.	0300997	1	SPRAY CURTAIN SUPPORT ASSEMBLY
32.	0300998	1	SUPPORT CLAMP
33.	0501625	1	SPRAY CURTAIN ASSEMBLY
34.	0501411	5	#10-32 x 1/4 RH SS MC SCREW
35.	0503722	5	#10-32 SS HEX NUT
=====			
36.	0300814	2	TANK MOUNT BRACKET DFM4
	0300846	2	TANK MOUNT BRACKET DF-1M4, DF-2M4
37.	0501424	2	1/4-20 x 3/8 HEX SS MC SCREW
38.	0503675	1	BUTTON BUMPER
39.	0701168	1	FRONT FACING ASSEMBLY
42.	0503343	1	WARRANTY VOID LABEL (NOT SHOWN)
43.	NOT AVAILABLE	1	INSTALLATION LABEL (NOT SHOWN)
45.	0503789	2	#10-24 x 5/8 TH MC SCREW
46.	0501804	2	DOOR HANDLE SPACER (NOT SHOWN)

CABINET AND WASH COMPONENTS

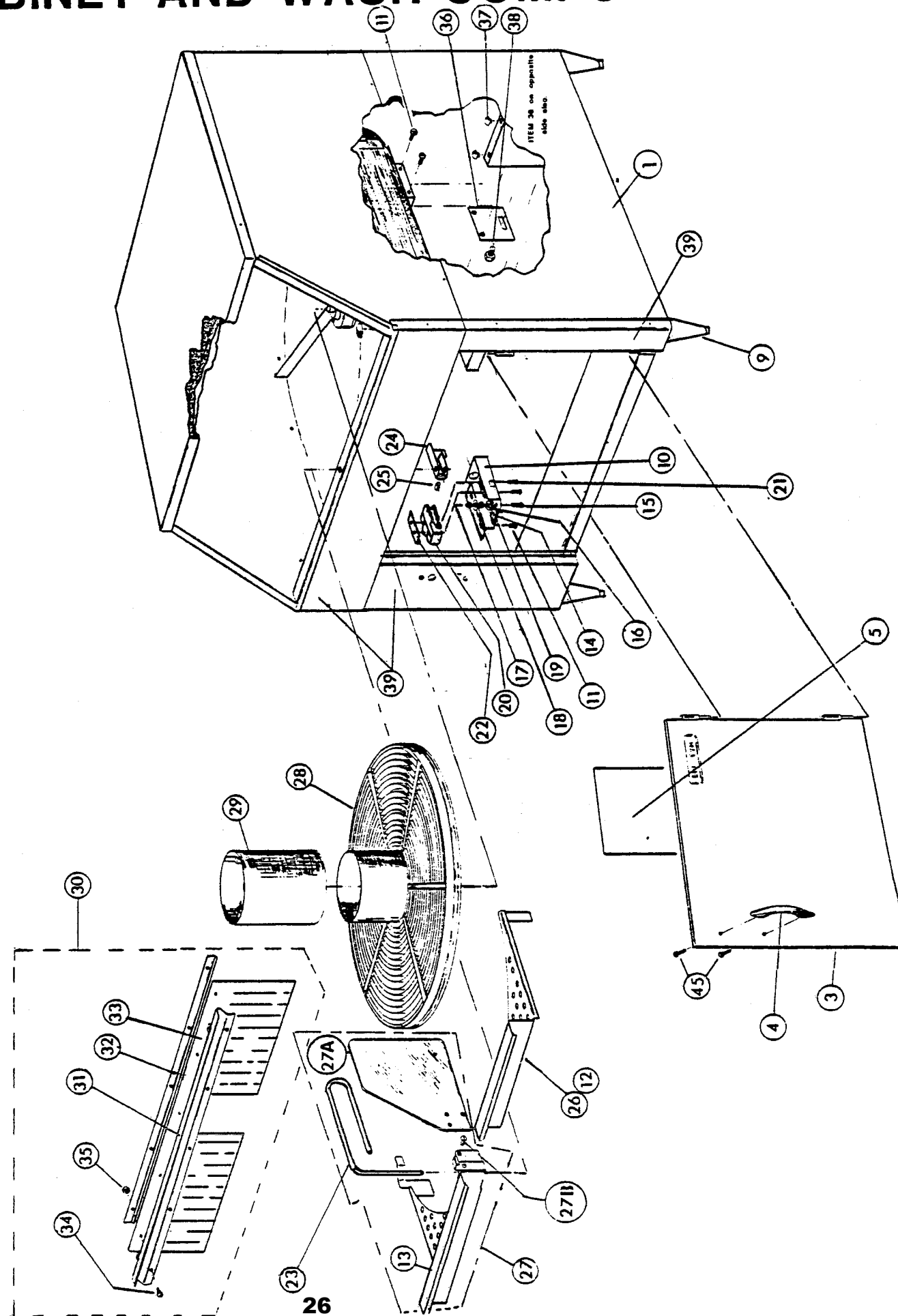


PLATE 8B

DRIVE COMPLETE

1. 0707268 1 DRIVE MOTOR COMPLETE (ORDER
CONVEYOR CONVERSION KIT #0707268)

=====INCLUDES
2. 0700994 1 DRIVE SUPPORT ASSEMBLY
3. 0501456 5 1/4-20 x 1/2 IND HEX SEMS MC SCREW
4. 0701155 1 MOTOR HOUSING ASSEMBLY
5. 0501689 2 SPACER
6. 0501923 1 EXTENSION SPRING

0703770 1 DRIVE MOTOR ASSEMBLY

=====INCLUDES
7. 0703770 1 230V 60 HZ MOTOR
8. 0303771 1 10T PLASTIC SPROCKET
9. 0501524 1 3/32 x 9/16 SEL LOC PIN
=====

10. 0503648 4 #8-32 x 5/16 PAN SEMS MC SCREW
11. 0501404 1 #10-32 x 3/8 RH BRASS MC SCREW
12. 0501493 1 #10 LOCK WASHER EXT TOOTH BRONZE
13. 0501472 4 #10L FLAT WASHER BRASS
14. 0300923 1 SIDE COVER
15. 0501558 2 1/8 ALUMINUM POP RIVET
16. 0300852 1 END COVER
17. 0501441 4 #10-32 x 5/16 PAN HD MC SCREW
18. NOT AVAILABLE 1 CABLE CLAMP
19. 0502658 1 1/2 ID x 025 PVC TUBING 2" LONG
20. 0501283 1 DRIVE MOTOR CORD SET
21. 0501894 2 BUSHING

22. 0301891 1 3/8" ID COLLAR

=====INCLUDES
23. 0700939 1 #10-32 x 3/16 SS SOCKET SET SCREW
=====

24. 0700939 1 DRIVE ROLLER ASSEMBLY

=====INCLUDES
30. 0501395 2 1/4-20 x 1/2" SOCKET SET SCREW
=====

25. 0303796 1 30T SPROCKET DRILLED AND TAPPED
26. 0501401 1 1/4-20 x 1/2 SOCKET
27. 0501886 1 CHAIN #25 x 58 ROLLERS
28. 0705006 1 BOTTOM COVER
29. 0501890 1 DRIVE SHAFT 3/8 x 7 1/2" LONG
31. 0300860 1 MOTOR DRIVE TUBE

DRIVE COMPLETE

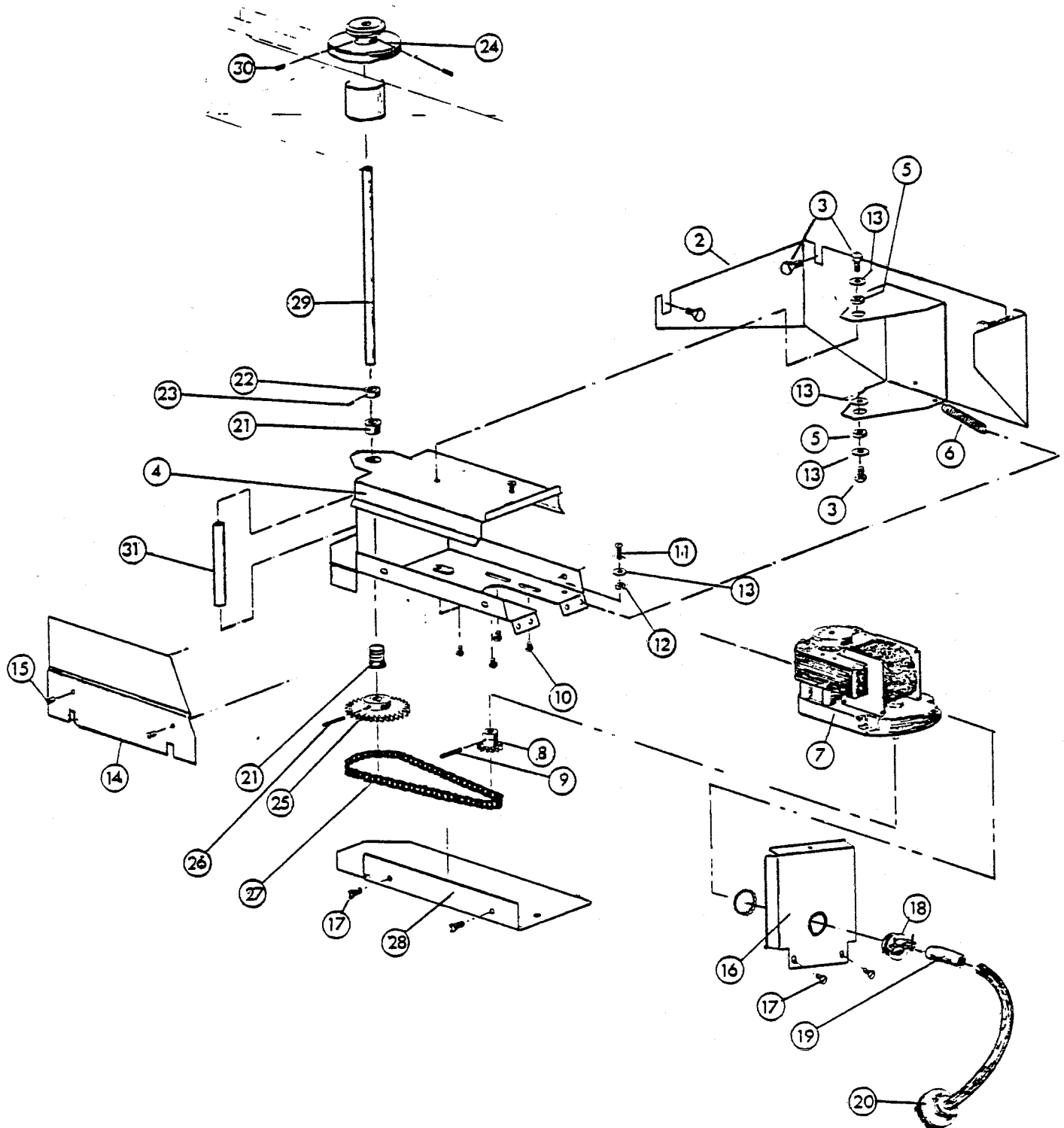


PLATE 952

ELECTRICAL BOX

1.	NOT AVAILABLE	1	ELECTRICAL BOX COMPLETE
-----			<u>INCLUDES</u>
2.	0701164	1	ELECTRICAL BOX ASSEMBLY
3.	0501413	2	#10-32 x 3/8 RH SS MC SCREW
4.	0501305	4	250V 15 A RECEPTACLE
5.	0501450	6	#6-32 x 1/4 RH NIBS MC SCREW
6.	0501361	1	DPDT ROCKET SWITCH 20A
7.	0501460	2	#8-32 x 3/8 RH MC SCREW
8.	0503579	2	#8-32 KEPS NUT
9.	0503765	1	230V AMBER NEON LAMP
10.	0501403	1	#10-32 x 3/4 RH MC SCREW - BRASS
11.	0501493	1	#10L LOCKWASHER EXT TOOTH - BRONZE
12.	0501533	2	#10-32 NUT - BRASS
13.	0503649	4	#10 FLAT WASHER - BRASS
14.	0503592	1	GROUND LABEL
15.	0501323	3	3/8 x 90 DEG ANGLE CONNECTOR
16.	0501231	1	POWER LEAD CORD SET
17.	0501230	1	SWITCH LEAD CORD SET
18.	0501232	1	RINSE VALVE CORD SET
19.	0300851	1	ELECTRICAL BOX COVER
20.	0501413	4	#10-32 x 5/16 PAN HD MC SCREW
21.	NOT AVAILABLE	1	PLUG INDICATOR LABEL
22.	0501280	1	ELECTRICAL BOX HARNESS (NOT SHOWN)
23.	NOT AVAILABLE	3	STRAIGHT 2 SCREW CABLE CLAMP

ELECTRICAL BOX

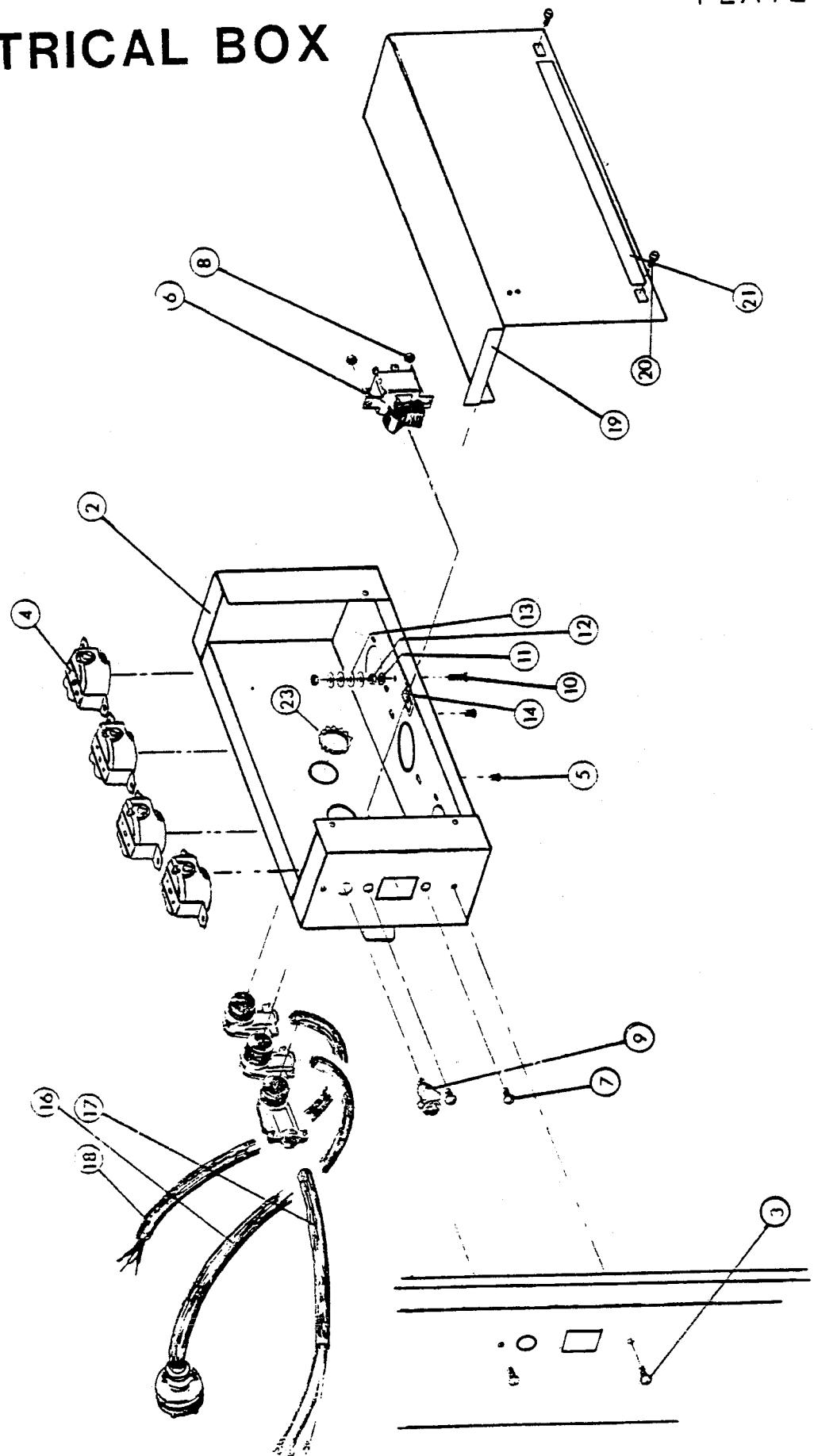


PLATE 711

DETERGENT TANK

1.	0700948	1	DETERGENT TANK WELDED ASSEMBLY
2.	0701107	1	REAR DETERGENT TANK COVER ASSEMBLY
3.	0701106	1	FRONT DETERGENT TANK COVER ASSEMBLY
4.	0700827	1	DETERGENT SCREEN ASSEMBLY
5.	0300831	1	STAND PIPE
6.	0501600	1	THERMOMETER
10.	0701180	1	DRAIN SCREEN ASSEMBLY DFM4, DF-1M4
	0701117	1	DRAIN SCREEN ASSEMBLY DF-2M4
11.	0701178	1	DRAIN PAN ASSEMBLY DFM4, DF-1M4
	0701183	1	DRAIN PAN ASSEMBLY DF-2M4
12.	0503928	1	SS DRAIN
=====INCLUDES=====			
13.	0502568	1	TAILPIECE GASKET
14.	0502566	1	TAILPIECE
=====			
16.	0501412	2	#10-32 3/8 TH SS MC SCREW
33.	0501330	1	230V 3000W HEATER WITH "O" RING
20.	0501424	2	1/4-20 x 3/8 MC SCREW
21.	0701016	1	DRAIN ASSEMBLY
22.	0502571	3	1 1/2" SS GEAR "T" HOSE CLAMP
23.	0502662	1	1 1/2" VAC FLEX CBS 16" LONG
24.	0504864	1	OPERATING TEMPERATURE LABEL
25.	0505112	1	DATA LABEL
26.	0300867	1	ADAPTOR SUPPORT
27.	0502663	1	3/8 ID x 5/8 OD BRD PVC 26" TUBING
28.	0503656	1	3/8 SNAP BUSHING

DETERGENT TANK

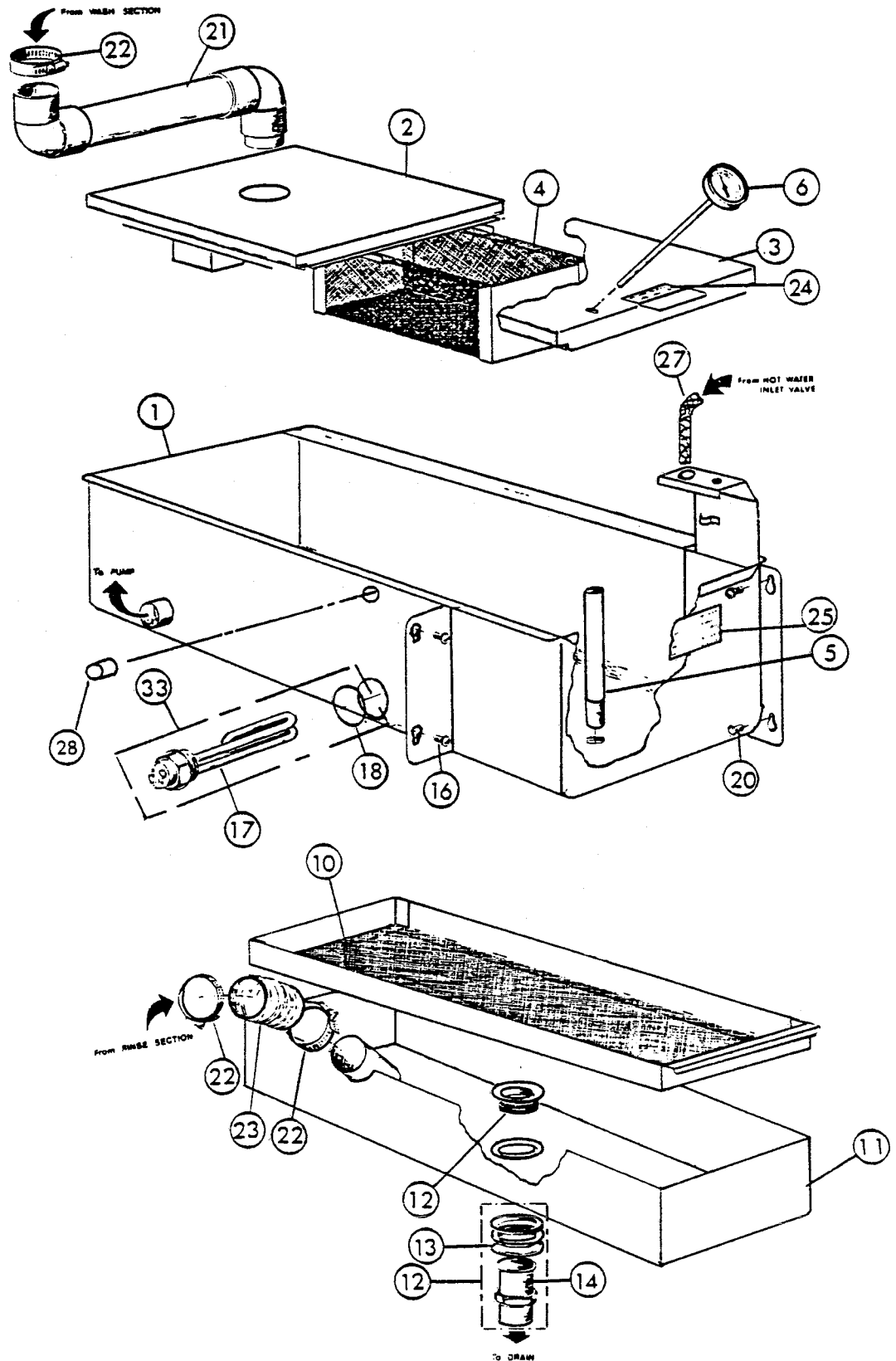


PLATE 683A

FLOAT BOX ASSEMBLY

1.	0703168	1	FLOAT BOX COVER ASSEMBLY
2.	NOT AVAILABLE	1	FLOAT BOX ASSEMBLY
3.	0501373	1	3 POS. TOGGLE SWITCH
4.	0503574	2	SMALL STRAIN RELIEF
5.	0501412	4	#10-32 x 3/8 TH MC SCREW
7.	NOT AVAILABLE	1	RUBBER GROMMET
8.	0703372	2	SPRING CLIP ASSEMBLY FOR THERMOSTAT
9.	0303465	3	SPACER
10.	0503701	2	TIMER SHAFT BEARING
11.	0701933	1	FLOAT CAM
12.	0700380	1	1" BRASS CAM & SET SCREW
13.	0703673	1	CAM BUSHING - MACHINED
14.	0300811	1	FLOAT ROD
15.	0503670	1	FLOAT BALL - SS
16.	0501375	2	TRIP SWITCH C/W ROLLER
17.	0503657	2	#6-32 x 1 3/4" RH MC SCREW
18.	0501377	1	VARIABLE THERMOSTAT
20.	0704763	1	THERMOSTAT COVER
21.	0501533	2	#10-32 NUT - BRASS
22.	0501472	2	#10L FLATWASHER - BRASS
23.	0501493	1	#10 LOCKWASHER EXTTOOTH - BRONZE
24.	0501403	1	#10-32 x 3/4 RH MC SCREW - BRASS
25.	0503592	1	GROUND LABEL
26.	0501228	1	HEATER CORD SET (NOT SHOWN)
27.	0501275	1	FLOAT BOX HARNESS (NOT SHOWN)
28.	0503693	1	SWITCH UP WHEN OPERATING LABEL

PLATE 743A

FLOW METER ASSEMBLY

1. 0301700 1 FLOW METER C/W 3/16" BARB

=====INCLUDES

2. 0501895 1 SS BALL
4. 0501644 2 "O" RING 3/16 ID x 1/16
5. 0501647 2 HOSE BARB FOR 3/16 HOSE
6. 0502867 1 FLOW METER GLASS

=====

7. 0501869 1 STRAINER
8. 0501518 3 4" NYLON TIE
9. 0300924 1 FLOW METER BRACKET
10. 0502666 1 1/8 ID x 1/4 OD PVC BEV 20" TUBING
11. 0503694 1 STERILIZER LABEL
12. 0502666 1 1/8 ID x 1/4 OD PVC BEV 30" TUBING
13. 0306363 1 STIFFENING WIRE
14. 0504911 2 #8 x 6/16 PAN HD MC SCREW
15. NOT AVAILABLE 1 PUMP OUTLET LABEL

FLOW METER ASSEMBLIES

PLATE 743A

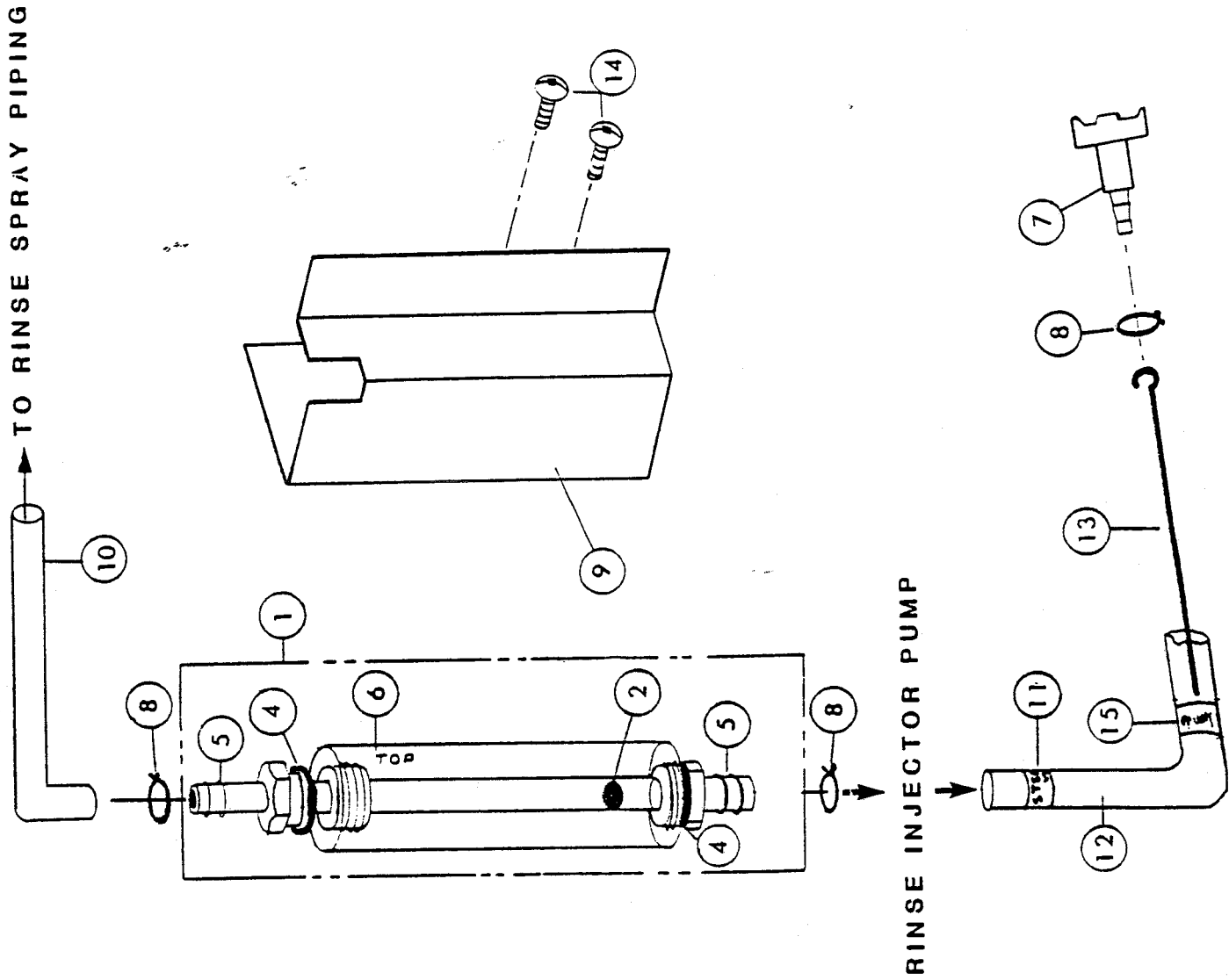
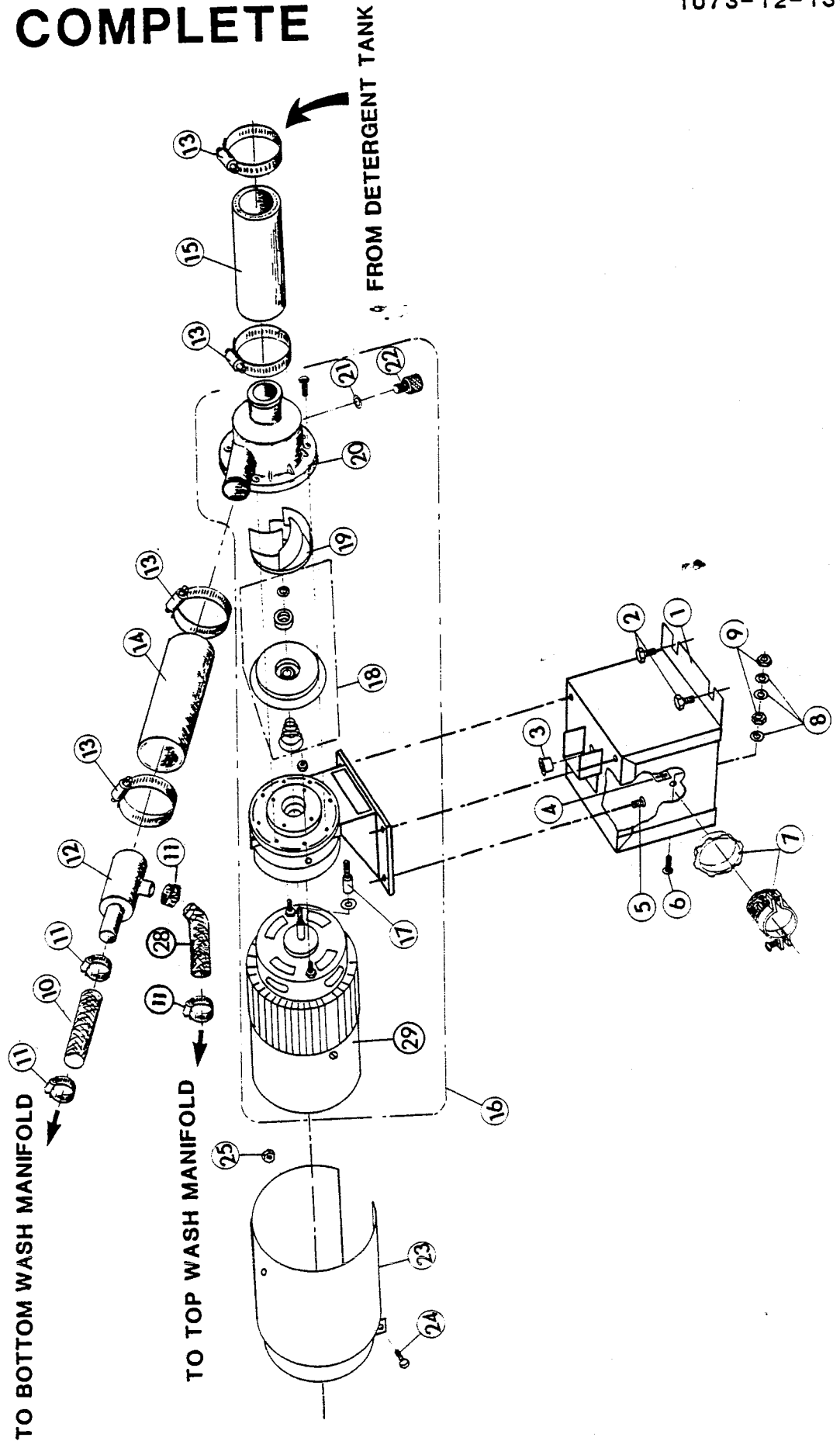


PLATE 706

PUMP COMPLETE

1.	0701202	1	PUMP BASE ASSEMBLY
2.	0501456	2	1/4-20 x 1/2 IND HEX SEMS MC SCREW
3.	0505232	1	1/2 SNAP BUSHING
4.	0503592	1	GROUND LABEL
5.	0503648	4	#8-32 x 5/16 PAN SEMS MC SCREW
6.	0501403	1	#10-32 x 3/4 RH MC SCREW - BRASS
7.	NOT AVAILABLE	1	STRAIGHT 2 SCREW CABLE CLAMP
8.	0501472	3	#10L FLAT WASHER - BRASS
9.	0501533	2	#10-32 NUT - BRASS
10.	0502665	1	1/2" ID x 13/16 OD BRD PVC 5" TUBE
11.	0503679	4	7/16 SS GEAR TYPE HOSE CLAMP
12.	0501632	1	PUMP HOSE CONNECTOR
13.	0502563		1" SS GEAR TYPE HOSE CLAMP
14.	0502668		1" ID x 1 BRD WATER HOSE 4"
15.	0502668		1" ID x 1 BRD WATER HOSE 4"
16.	0502692	1	230V 60HZ PUMP & MOTOR COMPLETE
=====			
<u>INCLUDES</u>			
17.	0502734	1	STUB SHAFT
18.	0502730	1	SEAL KIT C/W SPRING
19.	0502729	1	IMPELLER
20.	0502731	1	PUMP HOUSING
21.	0501635	1	"O" RING 5/16" ID x 1/16
22.	0502732	1	SEAL SCREW FOR HOUSING
29.	NOT AVAILABLE	1	PUMP MOTOR (USE ITEM #16)
=====			
30.	0701087	1	PUMP SHIELD
24.	0501463	1	8-32 x 3/4 RH MC SCREW
25.	0501538	1	#8-32 HEX NUT
26.	0501284	1	PUMP MOTOR CORD SET (NOT SHOWN)
27.	0501320	3	IDEAL CONNECTOR (NOT SHOWN)
28.	0502663	1	3/8 ID 5/8 OD BRD PVC 15" TUBING

PUMP COMPLETE



0700366 1 DETERGENT TIMER & OSCILLATING PUMP
 =====
 INCLUDES

1. 0502694 1 OSCILLATING PUMP 230V 60HZ
 =====
 INCLUDES
 2. 0502739 1 HOSE CONNECTOR OUTLET
 3. 0502737 1 POPPET VALVE ASSEMBLY
 4. 0502736 1 DIODE
 5. 0502735 1 COIL & FRAME ASSEMBLY
 6. 0502738 1 CONNECTOR INLET
 =====

7. 0703076 1 PUMP SUPPORT MOUNT ASSEMBLY
 8. 0703083 1 OSCILLATING PUMP SUPPORT ASSEMBLY
 9. 0501518 2 5 1/2" NYLON TIE
 10. 0502667 1 1/4 ID x 3/8 OD PVC BEV 33" TUBING
 11. 0502667 1 1/4 ID x 3/8 OD PVC BEV 40" TUBING
 15. 0501274 1 OSCILLATING PUMP CORD (NOT SHOWN)
 16. 0501315 1 SWITCH INSULATION (NOT SHOWN)
 17. 0505899 1 15 POINT TERMINAL BLOCK
 18. NOT AVAILABLE 1 STRAIGHT 2 SCREW CABLE CLAMP
 19. 0501348 1 TIMER MOTOR 230V 60HZ
 20. 0504861 2 #4-40 x 1/4 RH MC SCREW
 21. 0501403 1 #10-32 x 3/4 RH MC SCREW - BRASS
 22. 0501493 1 #10 LOCKWASHER EXTTOOTH - BRONZE
 23. 0501533 2 #10-32 NUT - BRASS
 24. 0501472 3 #10L FLAT WASHER - BRASS
 25. 0503592 1 GROUND LABEL
 26. 0306792 1 TIMER CAM ASSEMBLY
 27. 0501397 1 #6-40 x 3/16 SOCK SET CUP PT.
 28. 0501432 1 PORTION SCREW
 29. 0503363 1 PORTION SWITCH BRACKET
 30. 0501924 4 EXTENSION SPRING
 31. NOT AVAILABLE 1 7/8" SNAP BUSHING
 32. 0506649 1 SELECTION SWITCH (PRIMING)
 33. 0501363 1 SWITCH (PORTION)
 34. 0300903 1 SWITCH HOLDER CLAMP
 35. 0501413 6 #10-32 x 5/16 PAN HD MC SCREW
 36. 0503723 1 #6-32 x 1 RH MC SCREW
 37. 0501551 1 #6-32 KEPS NUT
 38. 0501925 1 SPRING (PORTION) (NOT SHOWN)
 39. 0505469 2 #6-32 x 1/2 RH MC SCREW
 40. 0501551 2 #6-32 KEPS NUT
 41. 0303075 1 TIMER BOX
 42. 0503343 1 WARRANTY VOID LABEL (NOT SHOWN)
 43. 0501543 2 5/16-24 HEX JAM NUT
 =====

12. 0503695 1 DETERGENT LABEL
 13. 0306363 1 STIFFENER WIRE
 14. 0501869 1 STRAINER

DETERGENT TIMER & OSCILLATING PUMP

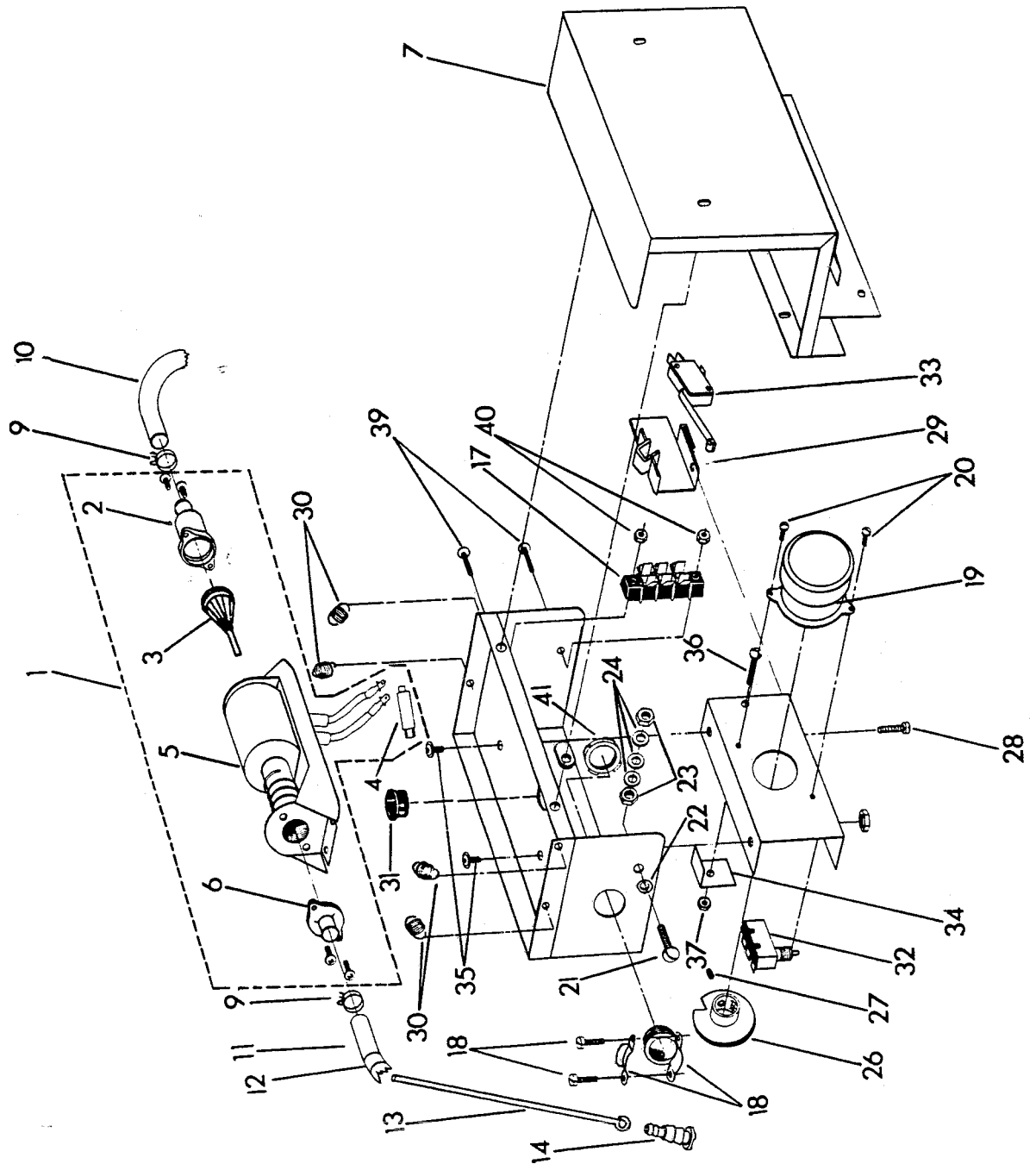


PLATE 738

INLET PLUMBING

1.	0501406	4	#8-32 x 1/2" RH SS MC SCREW
2.	0300861	2	CABLE CLAMP
3.	0300862	2	CABLE CLAMP BRACKET
4.	0503592	2	GROUND LABEL
5.	0501403	2	#10-32 x 3/4" RH BRASS MC SCREW
6.	0501538	4	#8-32 HEX NUT SS
7.	0501493	2	#10 LOCKWASHER EXTTOOTH - BRONZE
8.	0501533	2	#10-32 NUT BRASS
9.	0502783	2	SOLENOID VALVE 230V 60HZ
=====INCLUDES=====			
10.	0502806	1	230V 50/60HZ COIL
11.	0505229	1	SOLENOID GUIDE
12.	0505230	1	DIAPHRAGM KIT
13.	0502803	1	SCREEN
14.	0502804	1	SEAL WASHER
15.	0502810	1	FLOW WASHER
16.	0502807	1	WASHER
=====			
17.	0502618	1	COUPLER 3/8 MPT x 1/2 OD HOSE BARB
18.	0502606	1	COUPLER 3/8" HOSE BARB x 3/8" MPT
19.	0502605	4	REDUCING HEX NIPPLE 1/2" x 3/8"
20.	0502581	2	TEE 1/2" FPT
21.	0502768	1	STOP VALVE 3/8" FPT x 3/8" FPT
22.	0503748	1	U BOLT 1 1/8" ID x 1/4-20
23.	0501496	2	5/16 LOCKWASHER
24.	0501539	2	1/4-20 HEX NUT SS
25.	0502663	2	3/8 ID x 5/8 OD BRD PVC 28" TUBING
26.	0503679	2	7/16" SS GEAR TYPE CLAMP
27.	0503697	1	HOT WATER LABEL (NOT SHOWN)
28.	0503692	1	MIXING VALVE LABEL (NOT SHOWN)
29.	0503337	1	COLD WATER LABEL (NOT SHOWN)
30.	0502580	1	TEE 3/8 IPS
31.	0503800	1	NIPPLE 3/8 IPS BRASS 2" LONG
32.	0503668	1	THERMOMETER

INLET PLUMBING

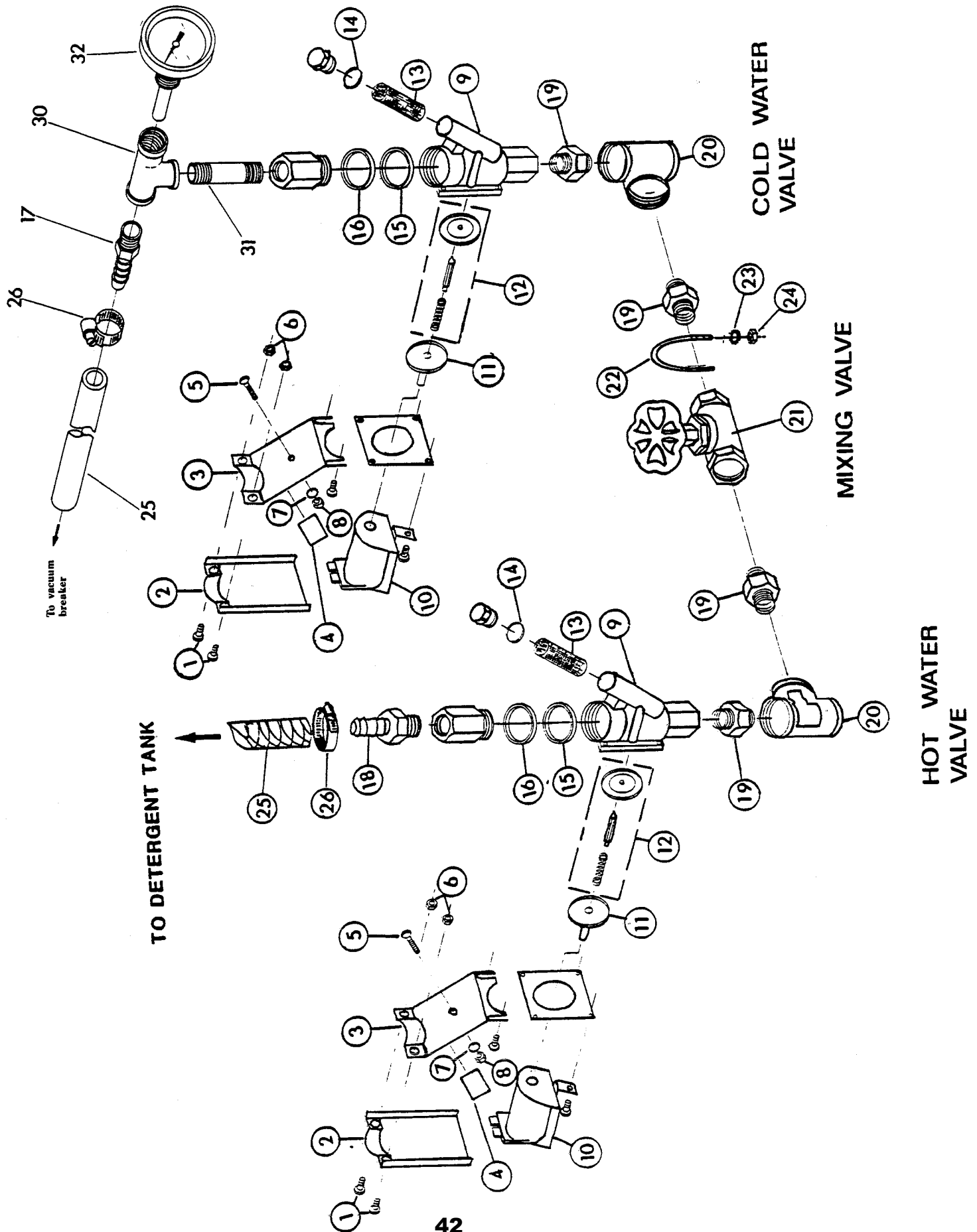


PLATE 734A

SANITIZER PLUMBING

1.	0700845	1	DEMA CONNECTOR ASSEMBLY
2.	0503679	3	7/16 SS GEARTYPE HOSE CLAMP
3.	0502663	1	3/8 ID x 5/8 OD BRD PVC 10" TUBING
4.	0502618	1	COUPLER 3/8 MPT x 1/2 OD
5.	0502665	1	1/2 ID 13/16 OD BRD PVC 30" TUBE
6.	0300918	1	PLUMBING CLAMP
7.	0501456	2	1/4-20 x 1/2 IND HEX SEMS MC SCREW
8.	0507100	1	PRESSURE GAUGE
9.	0502781	1	NEEDLE VALVE 1/4 MPT x 1/4 FPT
10.	0501779	1	INJECTOR BARB FITTING
11.	0501644	1	"O" RING 3/16 x 1/16 WALL
12.	0501647	1	HOSE BARB FOR 3/16" HOSE

PLATE 714

VACUUM BREAKER

1. 0502751 1 1/2" VACUUM BREAKER

=====INCLUDES
3. 0502763 1 REPAIR KIT
=====

5. 0700886 1 FEED LINE ASSEMBLY
6. 0700888 1 RETURN LINE ASSEMBLY
7. 0502665 1 1/2 ID x 13/16 OD BRD PVC 13" TUBE
8. 0503679 2 7/16" SS GEARTYPE HOSE CLAMP

VACUUM BREAKER

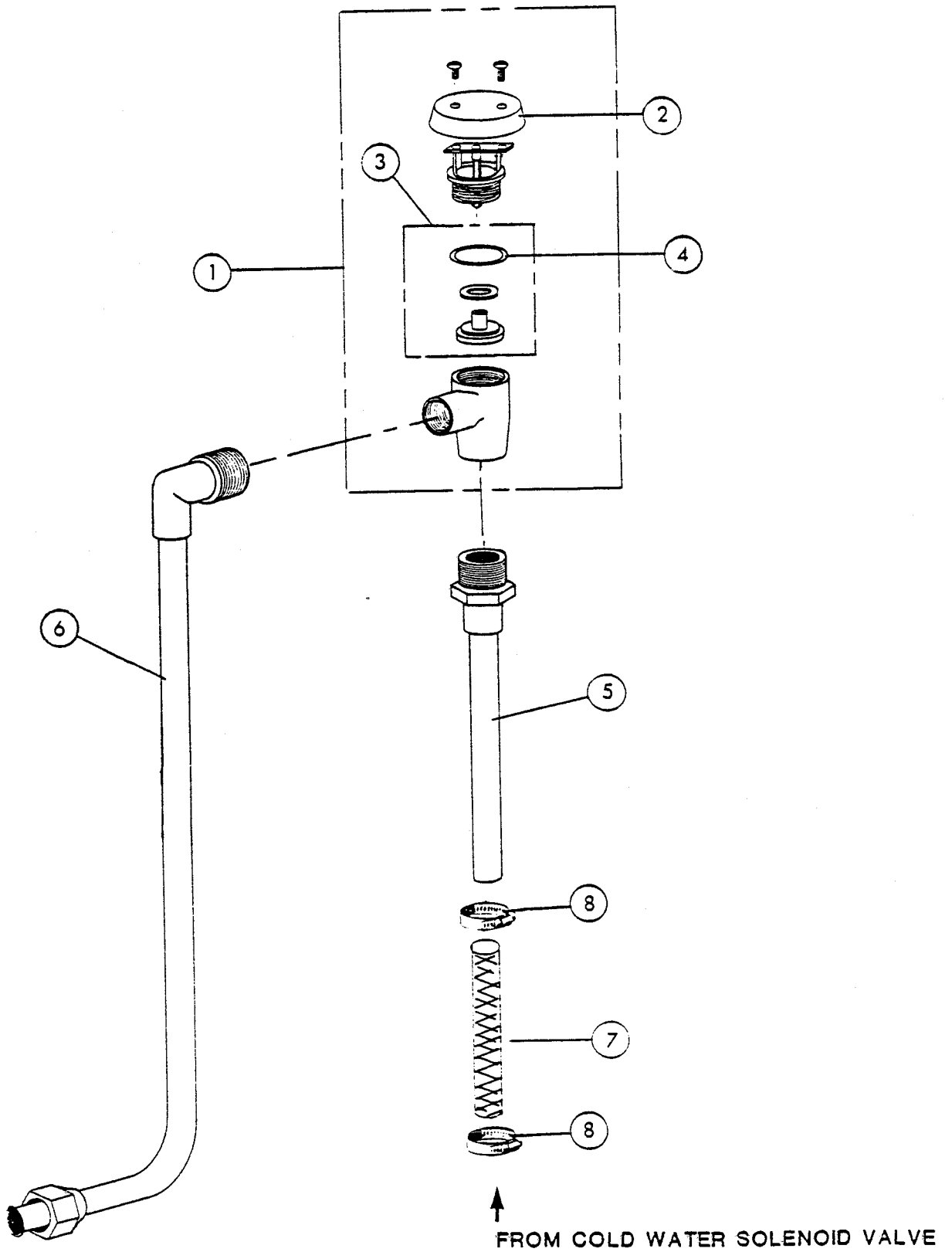


PLATE 713AWASH AND RINSE PLUMBING

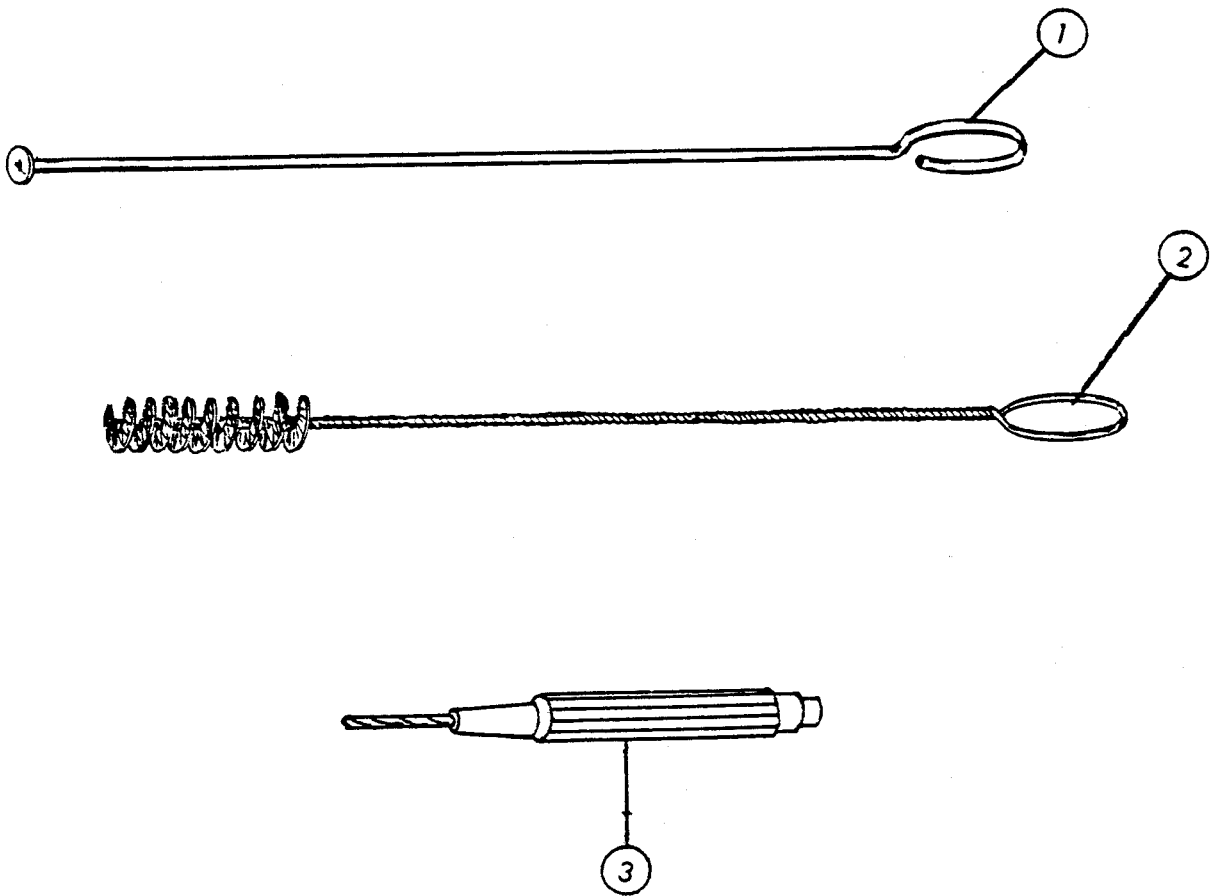
1.	0301622	1	BOTTOM MANIFOLD
	0501610	1	TOP MANIFOLD
2.	0501412	4	#10-32 x 3/8 TH SS MC SCREW
3.	0501613	2	TOP & BOTTOM WASH SPRAYTUBE DF CW
	0501692	2	TOP & BOTTOM WASH SPRAYTUBE DF CCW
4.	0501738	2	TOP & BOTTOM RINSE SPRAYTUBE DF CW
	0501740	2	TOP & BOTTOM RINSE SPRAYTUBE DF CCW
5.	0501608	4	"O" RING 9/16" ID x 3/32 W
6.	0700911	1	DEFLECTOR SCREW ASSEMBLY
7.	0503679	6	7/16 GEAR TYPE HOSE CLAMP SS
8.	0500813	1	BOTTOM MANIFOLD INLET
9.	0500813	2	TAPERED BOTTOM MANIFOLD INLET
10.	0502663	1	3/8 ID x 5/8 OD BRD PVC 15" TUBING
11.	NOT AVAILABLE	1	ADJUST FOR 3/8" HOLE
12.	0501621	5	SPRAYTUBE AND ROLLER SUPPORT
13.	0501616	4	TRACK SUPPORT ROLLER
14.	0501483	4	3/4 OD x .257 x 1/16 FLT CELC
15.	0501423	8	#10-32 x 1 1/4 RH SS MC SCREW
16.	0300822	4	SPRAY TUBE SUPPORT
17.	0300908	2	TOP RINSE TUBE
18.	INCLUDED WITH ITEM #22	1	TOP MANIFOLD INLET (SHORT)
19.	0502663	2	3/8 ID x 5/8 OD BRD PVC 5" TUBING
20.	INCLUDED WITH ITEM #22	1	TOP MANIFOLD INLET (LONG)
21.	030841	1	REAR DRAIN DEFLECTOR (NOT SHOWN)
22.	0501610	1	TOP MANIFOLD
23.	0501476	1	1/4 FLAT WASHER SS
24.	0501422	1	1/4-20 x 1 1/2 HEX BOLT SS
25.	0501608	1	"O" RING
26.	0301014	1	HOT WATER TOP LINE
27.	0301014	1	COLD WATER TOP LINE

PLATE 732

ACCESSORIES

1.	0700838	1	TUBE SCRAPER
2.	0501826	1	TUBE BRUSH
3.	0501633	1	JET REAMER C/W DRILL

ACCESSORIES



	NOT AVAILABLE	1	RINSE INJECTOR BOX
=====			<u>INCLUDES</u>
1.	0700371	1	RINSE INJECTOR BOX ASSEMBLY
=====			<u>INCLUDES</u>
2.	0504861	6	#4-40 x 1/4 RH MC SCREW
3.	0501549	2	#4-40 KEPS NUT
4.	NOT AVAILABLE	4	SPACE SELECTION BUTTON
5.	0700371	1	PUMP CONTROLLER BOARD
6.	NOT AVAILABLE	1	RINSE INJECTOR HARNESS (NOT SHOWN)
7.	0505901	1	HEAT SINK 1.8 x 1.8 x 1.3
9.	0501403	1	#10-32 3/4 RH MC SCREW
10.	0501493	1	#10 LOCKWASHER EXTTOOTH - BRONZE
11.	0501472	3	#10L FLAT WASHER - BRASS
12.	0501533	1	#10-32 NUT - BRASS
13.	NOT AVAILABLE	1	STRAIGHT 2 SC CABLE CLAMP
14.	0503592	1	EARTH LABEL (NOT SHOWN)
15.	0306659	1	INCREASE/DECREASE LABEL (NOT SHOWN)
16.	0503301	1	CAUTION LABEL (NOT SHOWN)
17.	0506876	1	230V/17V TRANSFORMER VA
18.	0503580	2	#10-32 KEPS NUT
19.	0501413	5	#10-32 x 5/16 HD MC SCREW
20.	0503635	1	FUSE HOLDER
21.	0506647	1	3/4 AMP FUSE
22.	0301160	1	INJECTOR BOX WELDED
23.	0301163	1	INJECTOR COVER
24.	NOT AVAILABLE	1	CONTROL KNOB
25.	0504861	4	#4-40 x 1/2 RH MC SCREW
26.	0503767	1	1/4 x 1 1/4 LONG HEAT SHRINK
27.	104309	3	FEMALE FASTON (NOT SHOWN)
28.	NOT AVAILABLE	1	CONN. NYLON PIGTAIL (NOT SHOWN)
29.	NOT AVAILABLE	1	RESISTOR
30.	0300929	1	RESISTOR CLIP
31.	NOT AVAILABLE	1	FUSE AMPERAGE LABEL (NOT SHOWN)

PLATE 954

PUMP RINSE INJECTOR

1.	0502700	1	MASTERFLEX PUMP RINSE INJECTOR
=====INCLUDES=====			
2.	0502713	2	PUMP HEAD
4.	0502715	1	PUMP SPINDLE
5.	0502716	2	#8-32 x 1 PHIL. HEAD
6.	0502717	2	THROUGH BOLT
=====			
7.	0502672	1	1/16 x 3/16 NORPRENE HOSE 15" LONG
8.	NOT AVAILABLE	4	SPACER 3/4" LONG ALUMINUM
9.	NOT AVAILABLE	1	PUMP MOUNT PLATE
10.	NOT AVAILABLE	2	PUMP OUTLET LABEL (NOT SHOWN)
11.	0501282	1	RINSE INJECTOR CORD (NOT SHOWN)
12.	0505976	1	MOTOR BUSHING
13.	0501398	1	#8-32 x 3/16 SOCK SET KN CONE
14.	0501352	1	PUMP MOTOR
15.	0501453	4	#8-32 5/16 RH HD LONG LOC
16.	0501463	4	#8-32 x TH SLOT
17.	0505141	1	PUMP TUBE FITTING

PUMP RINSE INJECTOR

