



# MODEL UC 60e

## PARTS MANUAL Rev 1.00B



DISTRIBUTED EXCLUSIVELY BY  
CMA DISHMACHINES  
12700 KNOTT AVENUE  
GARDEN GROVE, CALIFORNIA 92841

800-854-6417  
FAX 714-895-2141

[www.cmadishmachines.com](http://www.cmadishmachines.com)

# TABLE OF CONTENTS

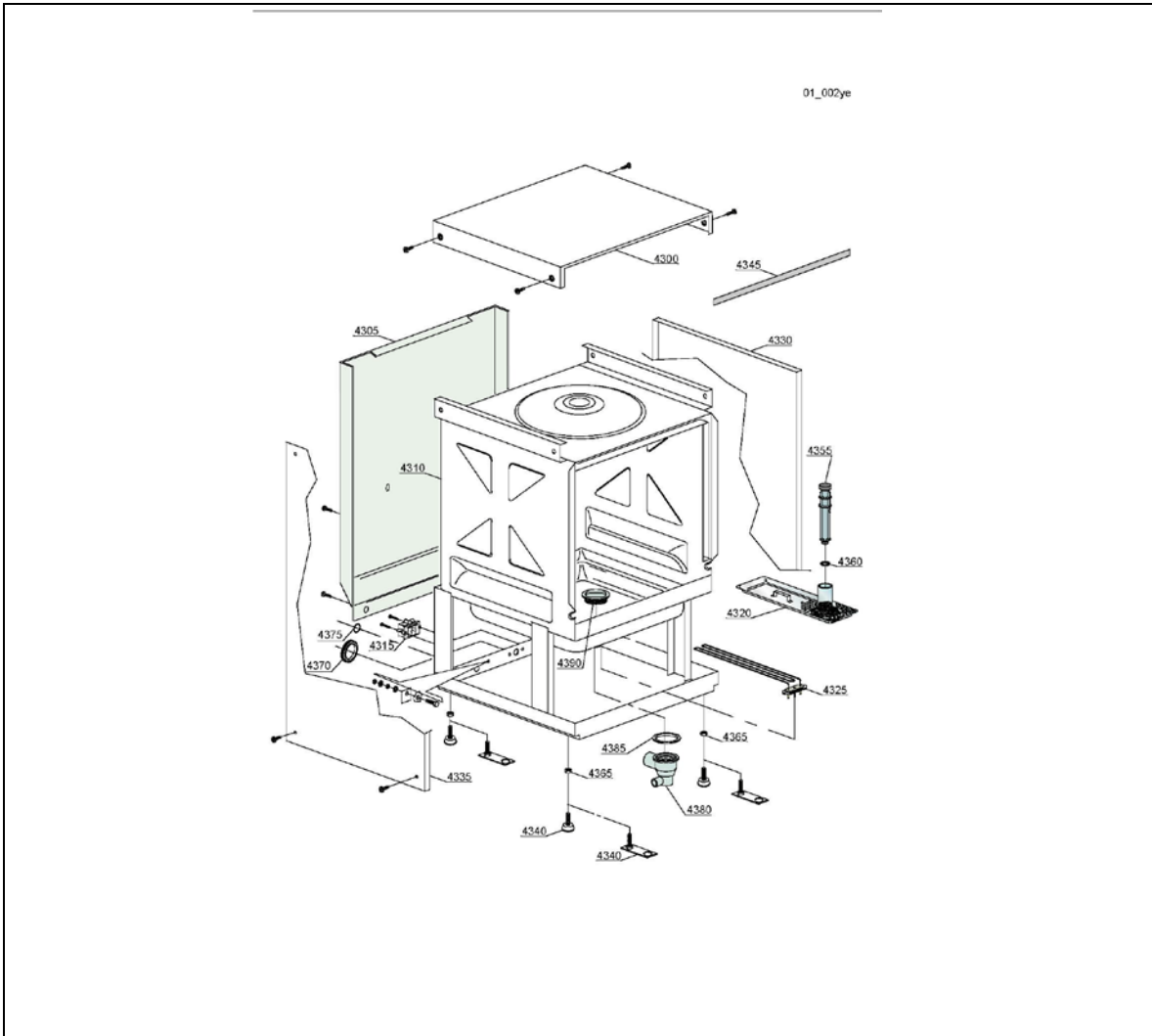
## MODEL UC60E

<b>1. PARTS MANUAL</b> .....	<b>3</b>
1.1. MECHANICAL DRAWINGS.....	3
1.1.1. General Body Parts .....	3
1.1.2. Lockup System .....	4
1.1.3. Command Electronic Control.....	5
1.1.4. Electric Control Components .....	6
1.1.5. Solenoid Valve Group.....	7
1.1.6. 3 Ways Connection .....	7
1.1.7. Rinse With Steady Temperature.....	8
1.1.8. Booster Pump .....	9
1.1.9. Rinse Aid Dispenser Group .....	10
1.1.10. Detergent Dispenser Group.....	11
1.1.11. Boiler Group.....	12
1.1.12. Wash Pump.....	13
1.1.13. Drain pump Group .....	14
1.1.14. Pressure Switch Group.....	14
1.1.15. Turret Group.....	15

# 1. Parts Manual

## 1.1. Mechanical Drawings

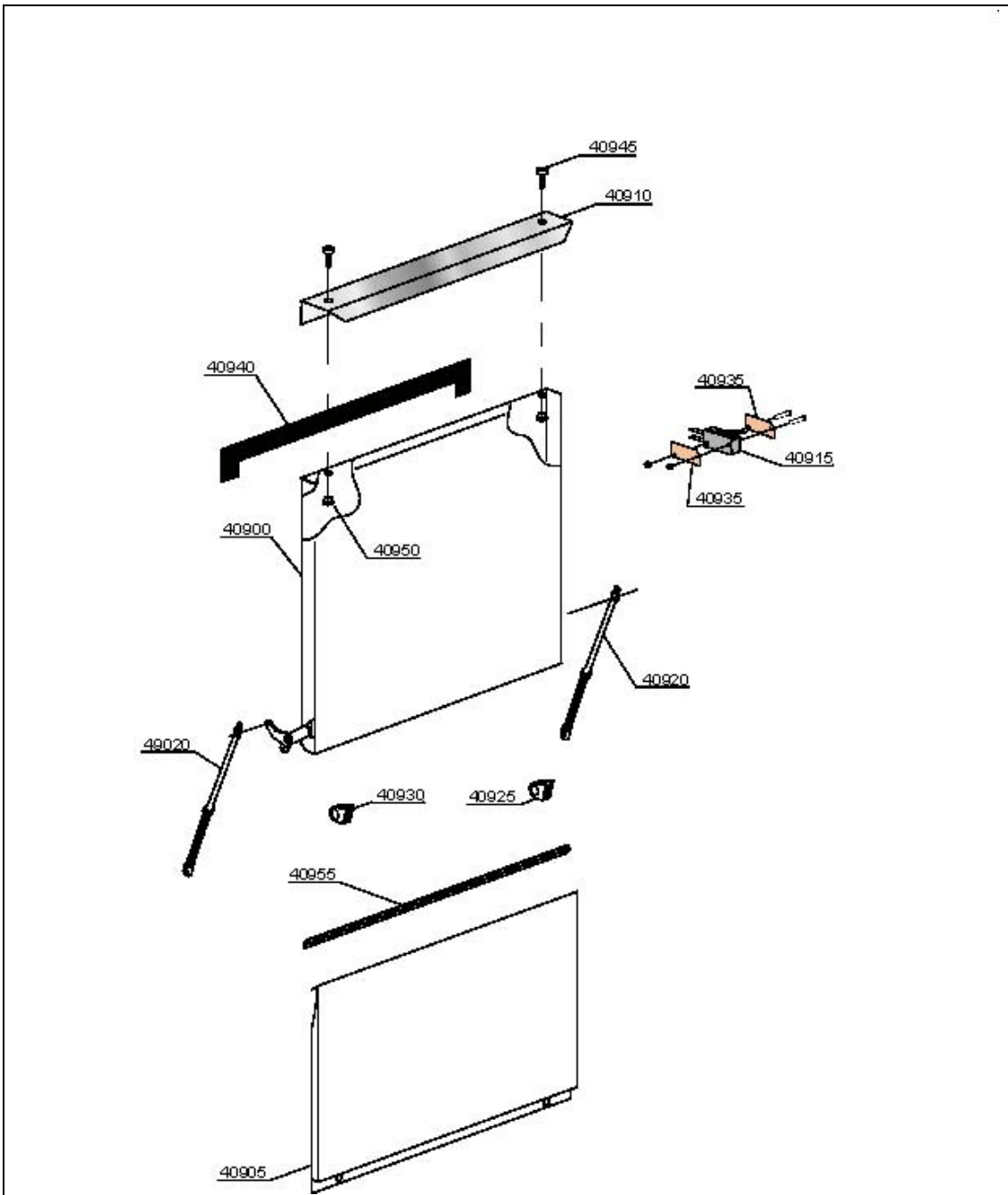
### 1.1.1. General Body Parts



ID	P- Code	DESCRIPTION
4300	2105.01	Top Cover
4305	2105.02	Back panel
4310	2405.12	Body
4315	2101.23	Cable-fastener with screw
4320	2405.17	Surface filter
4325	2100.66	2,7KW - 230V heating element
4330	2105.03	Right side panel
4335	2105.04	Left side panel
4340	2105.05	M10x25 040 black foot (minimum 4 pcs)

ID	P- Code	DESCRIPTION
4345	2405.19	Profile for door O-ring
4355	2405.21	Drain pump overflow pipe
4360	2100.57	DEM 40 O-ring (minimum 2 pieces)
4365	2405.23	M10 zinc plated nut (minimum 20 pcs)
4370	2101.28	D.40mm unloading pipe (min 2 pcs)
4375	2101.29	D.13mm dosing pipe (minimum 2 pcs)
4380	2100.70	Right side scrap tray
4385	2101.07	D 95x75x3 O-ring
4390	2405.25	Right nut

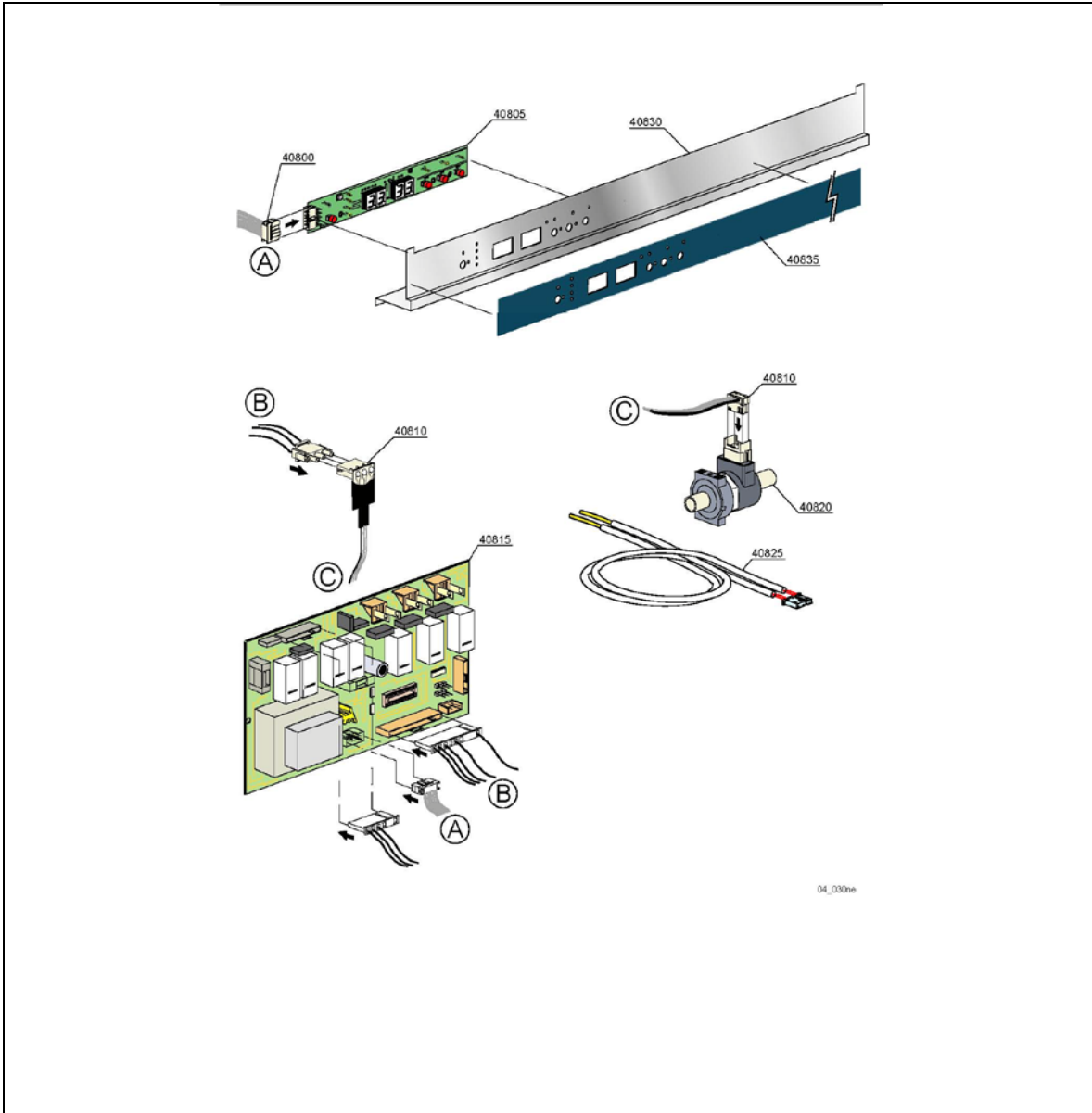
1.1.2. Lockup System



ID	P- Code	DESCRIPTION
40900	2405.27	Door with steel handle
40905	<a href="#">2405.29</a>	Lower door
40910	2405.31	Neutral Stainless steel handle
40915	2405.06	Door micro switch
40920	<a href="#">2405.33</a>	Door spring
40925	2405.35	Right lock for door hinge (min 2 pcs)

ID	P- Code	DESCRIPTION
40930	2405.37	Left lock for door hinge (min 2 pcs)
40935	2405.39	Insulation door micro switch (min 3 pcs)
40940	<a href="#">2405.19</a>	Profile for door O-ring
40945	<a href="#">2101.35</a>	M4x14 TCB-CR Inox Screw
40950	2405.41	M4 Inox Plated nut
40955	<a href="#">2105.07</a>	Profile for lower-door O-ring

1.1.3. Command Electronic Control

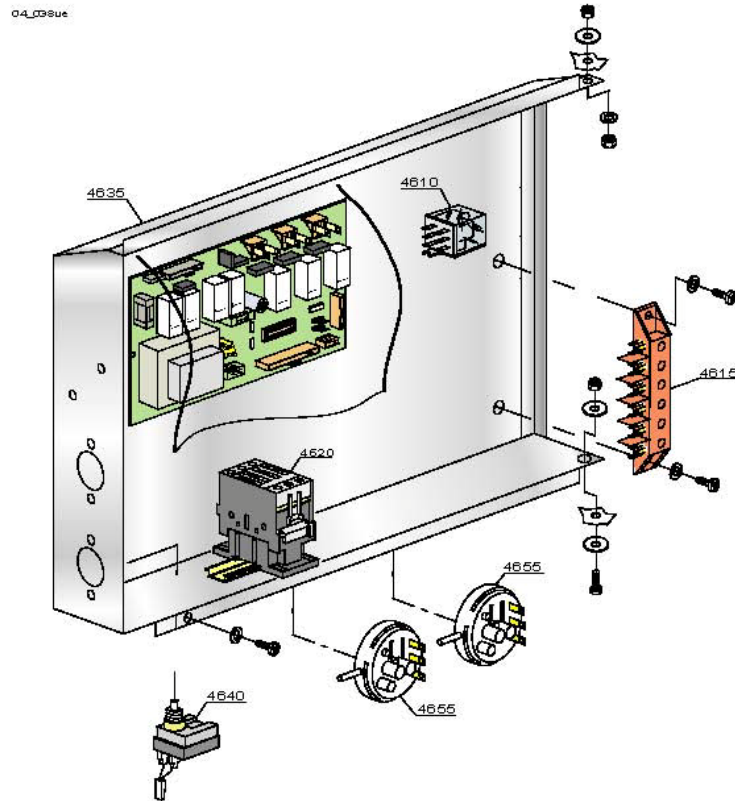


04\_030ne

ID	P- Code	DESCRIPTION
40800	<a href="#">2405.43</a>	Plug L=2300mm
40805	<a href="#">2105.08</a>	Touch sensitive
40810	<a href="#">2105.09</a>	Water float board
40815	<a href="#">2105.10</a>	Electronic timer with main board

ID	P- Code	DESCRIPTION
40820	<a href="#">2105.11</a>	Water flow meter for board
40825	<a href="#">2405.45</a>	Temperature probe set
40830	<a href="#">2405.47</a>	Control Panel
40835	<a href="#">2405.49</a>	Silkscreen processed grill

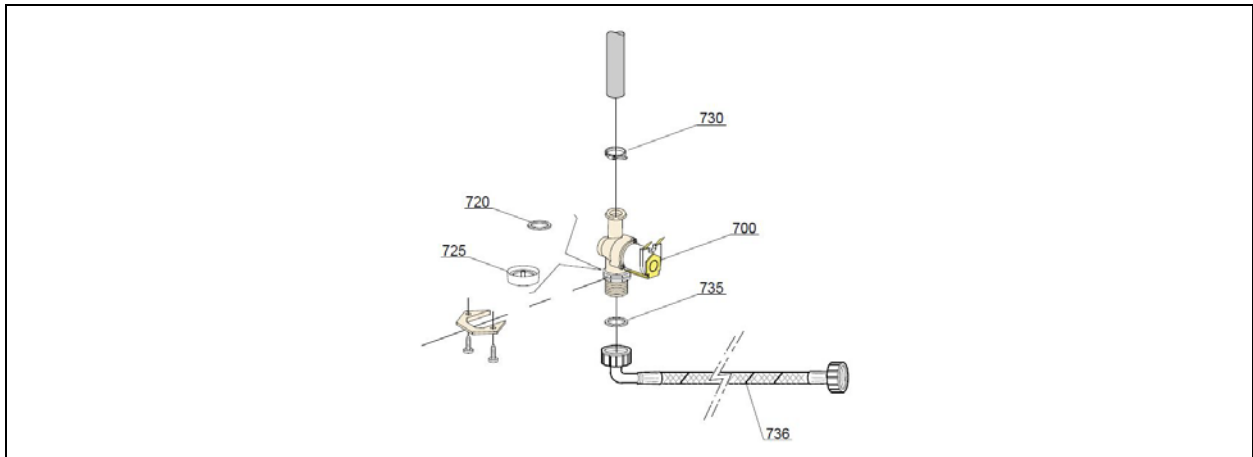
1.1.4. Electric Control Components



ID	P- Code	DESCRIPTION
4610	2105.16	16A tripolar relay - 230Vac 50/60Hz
4615	<a href="#">2100.51</a>	6 poles terminal board
4620	<a href="#">2100.49</a>	36A/20A contactor 3NA 230Vac 50/60Hz

ID	P- Code	DESCRIPTION
4635	2405.51	Electric components panel
4640	<a href="#">2100.37</a>	Safety thermostat
4655	<a href="#">2100.41</a>	47-27 "EL" Pressure switch

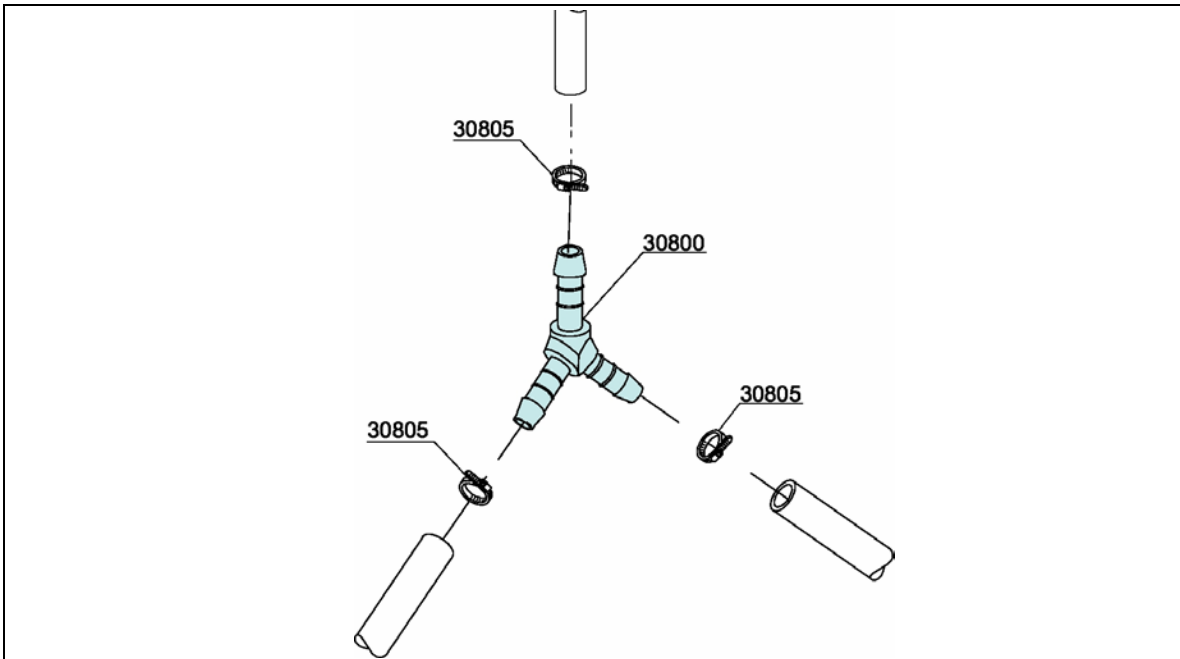
**1.1.5. Solenoid Valve Group**



ID	P- Code	DESCRIPTION
700	<a href="#">2100.13</a>	Single solenoid valve - 230Vac
720	N.C.	Pressure reducing valve
730	<a href="#">2101.42</a>	12/22 clamp (minimum 3 pieces)

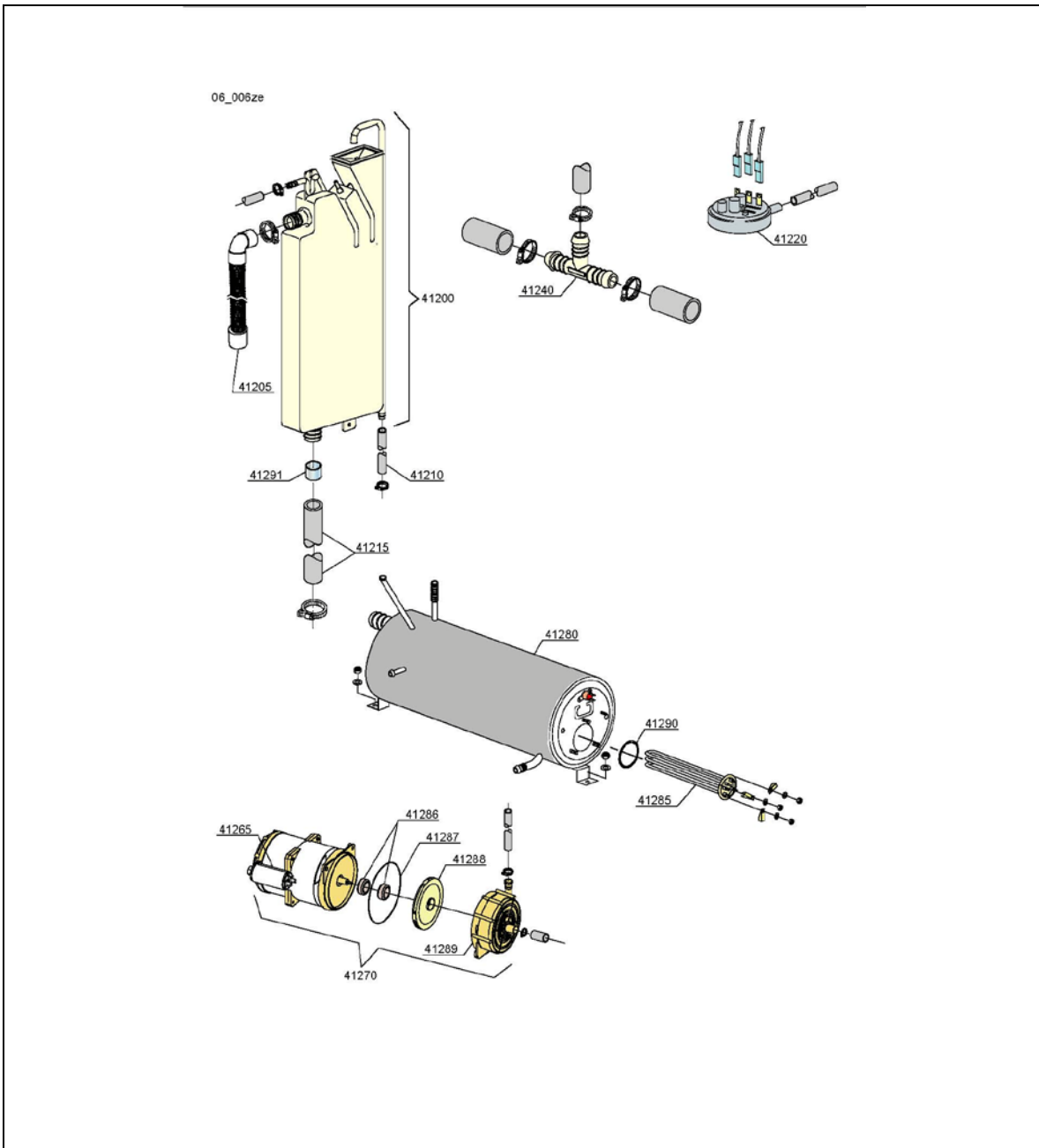
ID	P- Code	DESCRIPTION
735	<a href="#">2101.43</a>	3/4 gasket
736	<a href="#">2100.64</a>	Fill Hose

**1.1.6. 3 Ways Connection**



ID	P- Code	DESCRIPTION
30800	<a href="#">2101.12</a>	012 mm plastic 3 ways connection
30805	<a href="#">2101.42</a>	12/22 clamp (minimum 3 pieces)

1.1.7. Rinse With Steady Temperature

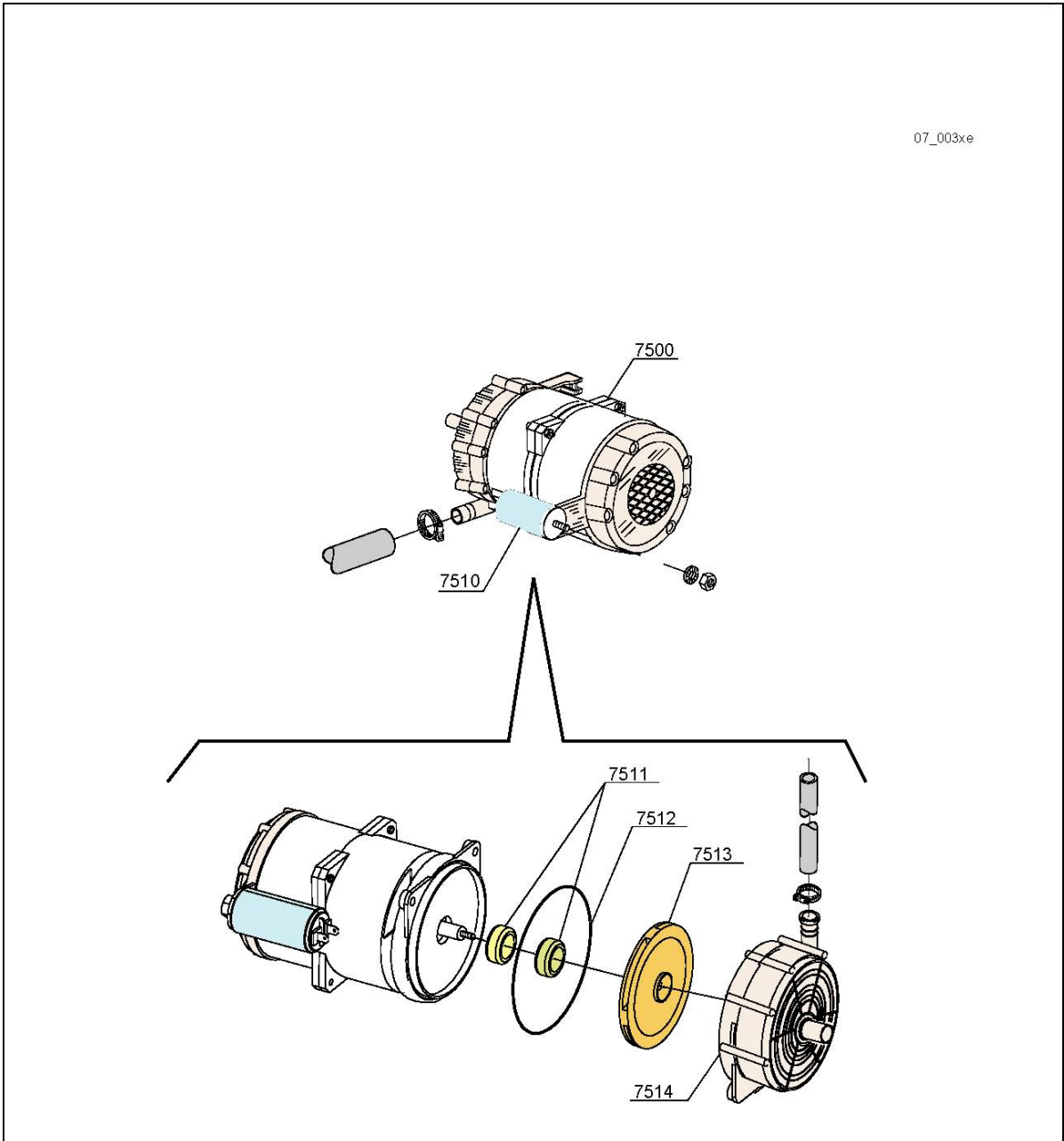


ID	P- Code	DESCRIPTION
41200	<a href="#">2405.53</a>	Break tank assembly
41205	2401.77	BT middle pipe L=920
41210	2401.79	PVC WRAS rubber hose
41215	-	Pipe coupling
41220	<a href="#">2100.41</a>	47-27 pressure switch
41240	2401.99	3 ways D25
41265	2401.87	5 uF condenser
41270	<a href="#">2105.14</a>	220/240V 60 Hz Plus Rinsing pump
41275	2401.85	Pump pipe coupling

ID	P- Code	DESCRIPTION
41280	<a href="#">2105.13</a>	Boiler
41285	<a href="#">2100.01</a>	6000/6530W 230/240V heating elem.
41286	2402.01	Rotating seals
41287	2402.03	O-ring gasket EPDM
41288	2402.05	Pump rotor
41289	2402.07	Scroll
41290	2403.27	O-ring 6225 gasket 160 NBR
41291	2405.55	Exit Pipe Reinforcement

1.1.8. Booster Pump

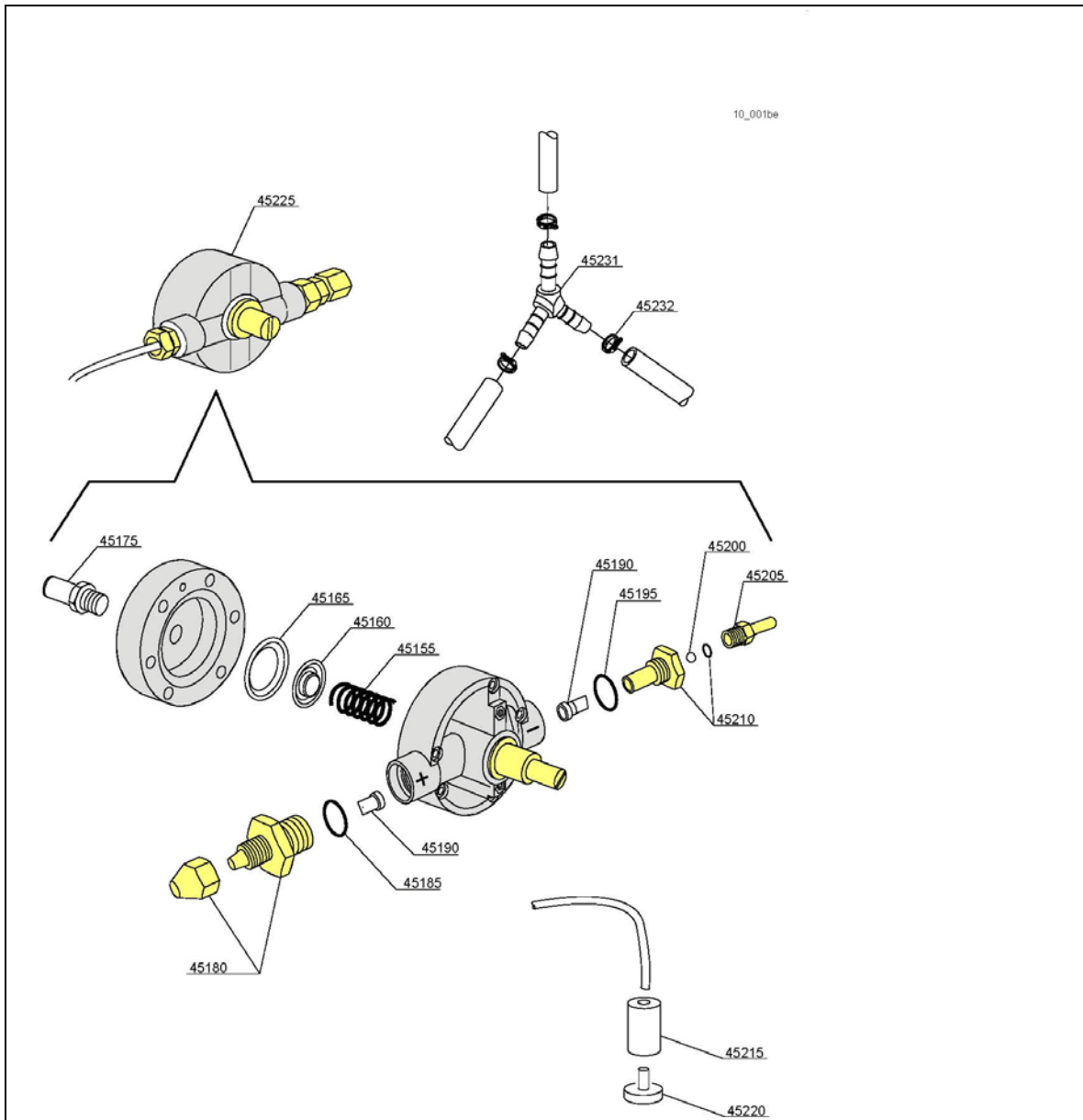
07\_003xe



ID	P- Code	DESCRIPTION
7500	2105.14	220/240V 60 Hz Plus Rinse pump
7510	2401.87	5 uF condenser - 450V
7511	2402.01	Rotating seals

ID	P- Code	DESCRIPTION
7512	2402.03	O-ring gasket EPDM
7513	2402.05	Pump rotor
7514	2402.07	Scroll

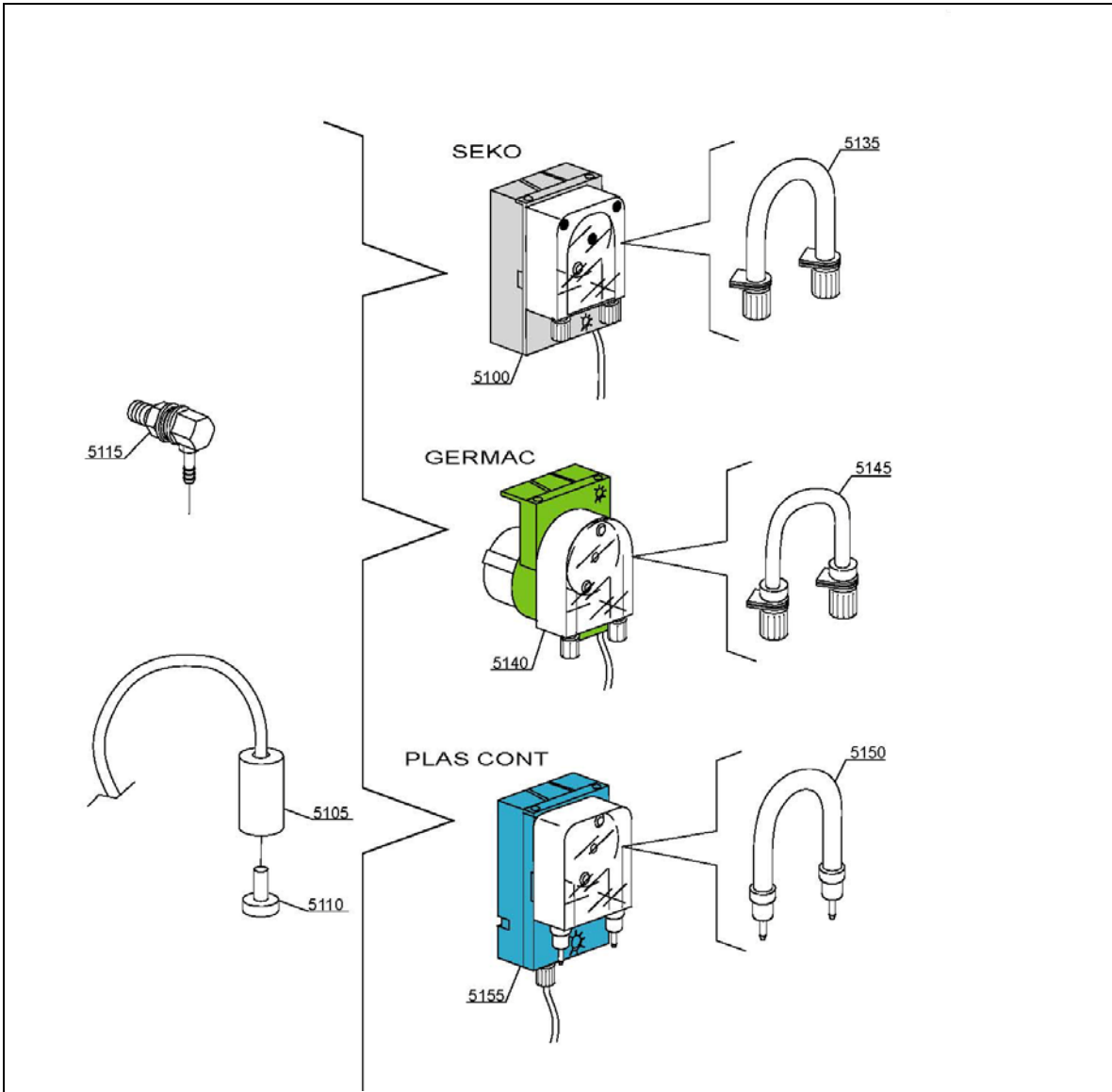
1.1.9. Rinse Aid Dispenser Group



ID	P- Code	DESCRIPTION
45155	2402.41	Spring
45160	2402.43	Disc to membrane
45165	2402.45	Membrane
45175	2402.47	Rubber-holder O 10mm
45180	2402.49	Pipe fitting
45185	2402.51	OR-gasket
45190	2402.53	Silicone valve
45195	2402.51	OR-gasket

ID	P- Code	DESCRIPTION
45200	2402.53	Sphere made of Teflon
45205	2402.55	Brass pipe fitting
45210	2402.57	OR-gasket Guide valve
45215	<a href="#">2101.47</a>	Ballast
45220	<a href="#">2101.48</a>	Small filter (minimum 3 pieces)
45225	<a href="#">2105.15</a>	GERMAC rinse aid dispenser
45231	<a href="#">2101.12</a>	Ø12 mm plastic 3 ways connection
45232	<a href="#">2101.42</a>	Clamp 12-22 (minimum 3 pieces)

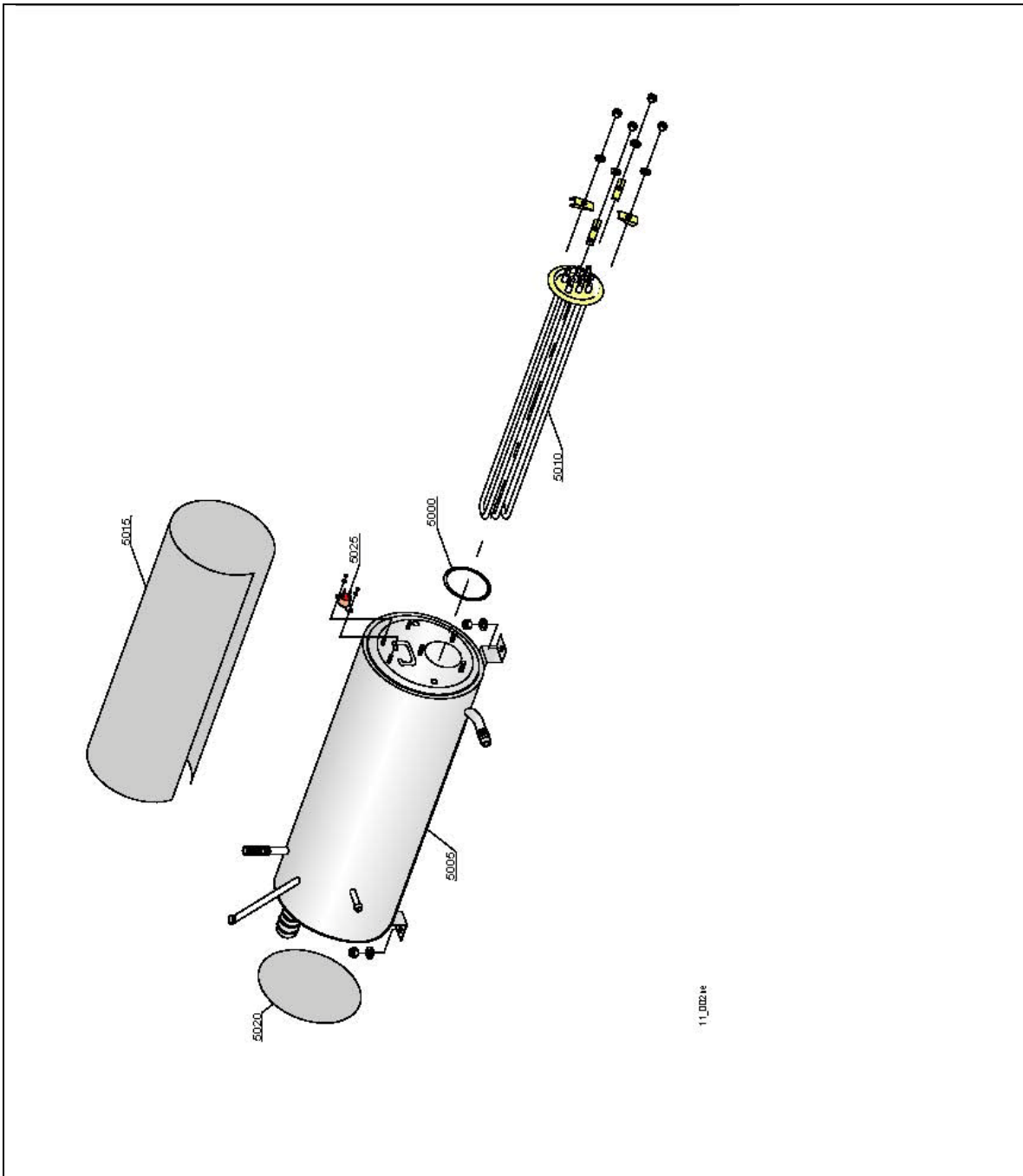
1.1.10. Detergent Dispenser Group



ID	P- Code	DESCRIPTION
5100	<a href="#">2100.19</a>	Seco detergent pump
5105	<a href="#">2101.47</a>	Ballast
5110	<a href="#">2101.48</a>	Small filter
5115	<a href="#">2101.02</a>	Complete s/s injector
51135	<a href="#">2100.95</a>	Squeeze Tube

ID	P- Code	DESCRIPTION
5140	<a href="#">2100.19</a>	Germac detergent pump
5145	<a href="#">2100.96</a>	Squeeze Tube
5150	<a href="#">2100.97</a>	Squeeze Tube
5155	<a href="#">2100.19</a>	Detergent Pump

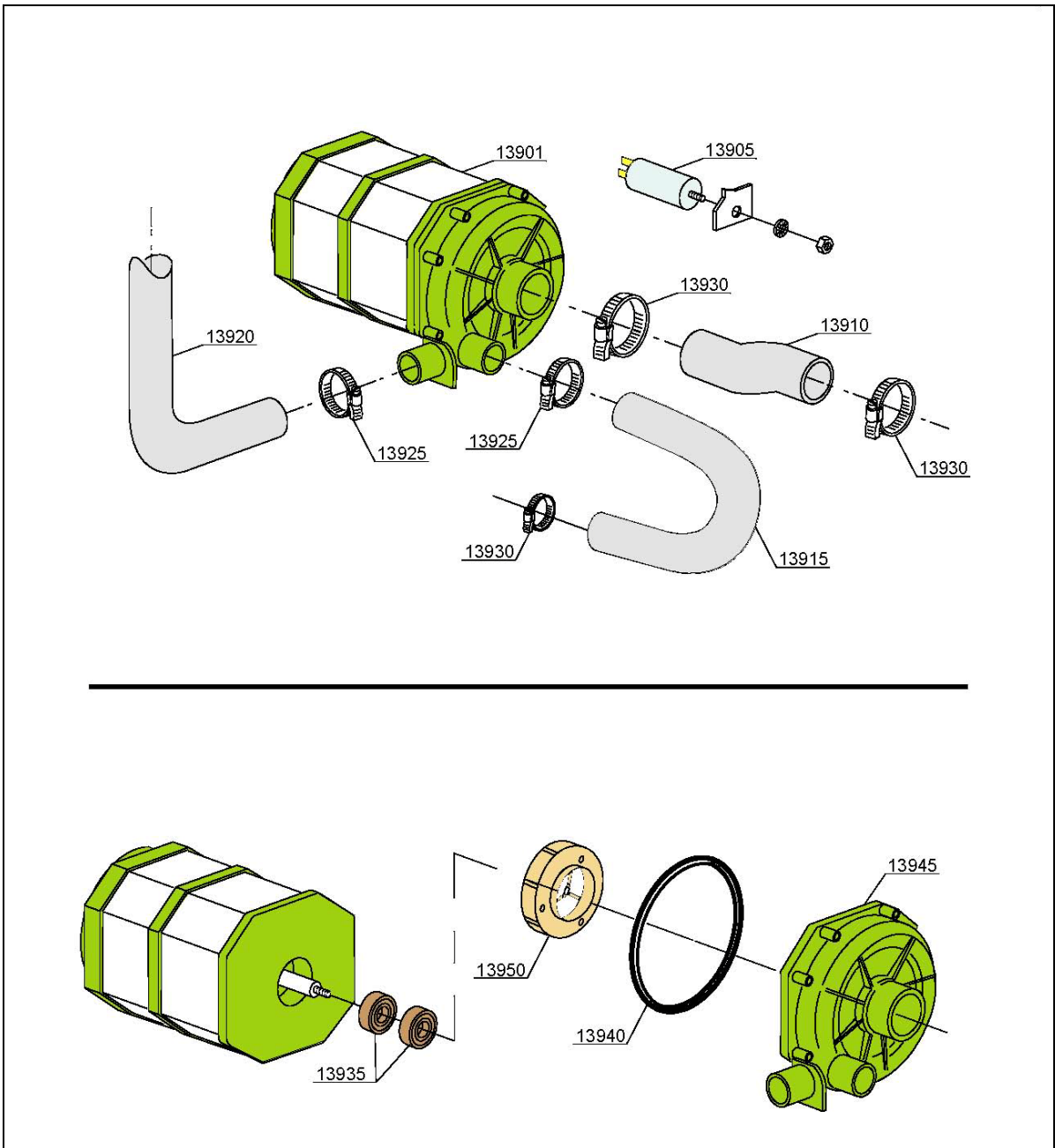
1.1.11. Boiler Group



ID	P- Code	DESCRIPTION
5000	<a href="#">2101.11</a>	OR 151 NBR O-ring (minimum 5 pcs)
5005	<a href="#">2105.13</a>	Boiler
5010	<a href="#">2100.01</a>	6/6.53 KW 230/240V 3 heating element

ID	P- Code	DESCRIPTION
5015	2405.57	Insulation boiler
5020	<a href="#">2101.51</a>	D160 End piece (minimum 2 pieces)
5025	<a href="#">2101.52</a>	Safety thermostat

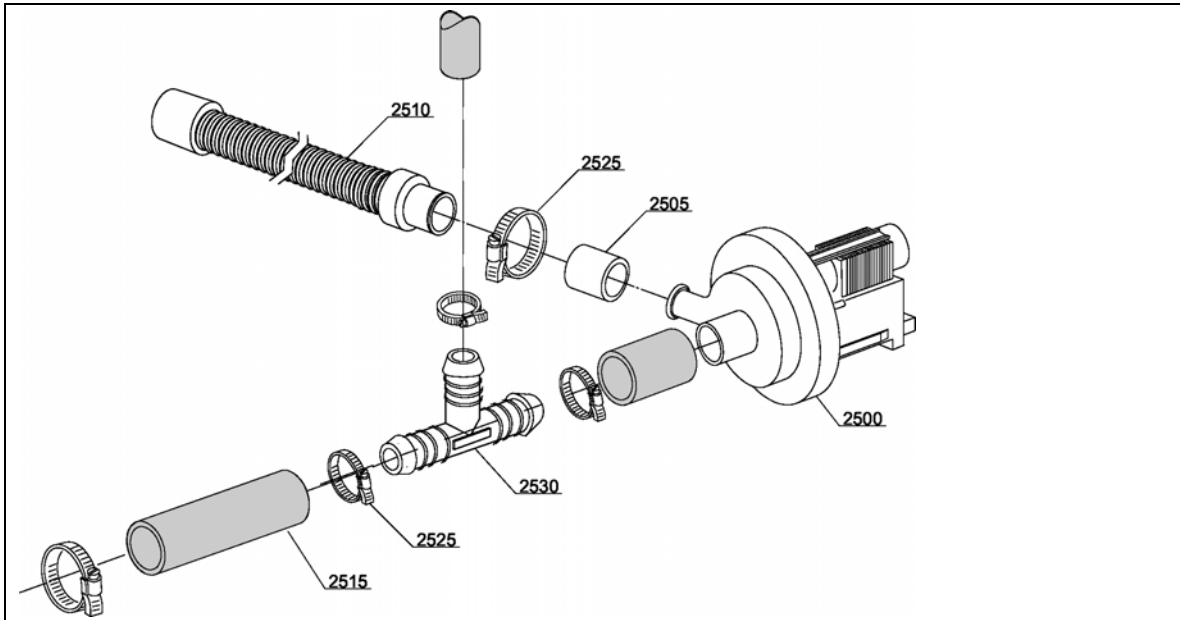
1.1.12. Wash Pump



ID	P- Code	DESCRIPTION
13901	<a href="#">2100.20</a>	Wash Pump (Olympia)
13905	<a href="#">2100.55</a>	R12,5 uF condenser
13910	<a href="#">2101.13</a>	Suction pipe coupling
13915	<a href="#">2405.59</a>	Lower wash pipe coupling
13920	<a href="#">2101.15</a>	Wash ramp
13925	<a href="#">2101.54</a>	25/40 clamp (minimum 2 pieces)

ID	P- Code	DESCRIPTION
13930	2101.55	30/45 clamp (minimum 2 pieces)
13935	<a href="#">2101.56</a>	Rotating seals
13940	<a href="#">2101.57</a>	OR pump O-ring (minimum 2 pcs)
13945	2405.61	Scroll (Olympia)
13950	2405.63	Pump rotor (Olympia)
13950	2405.65	Pump rotor (Olympia)

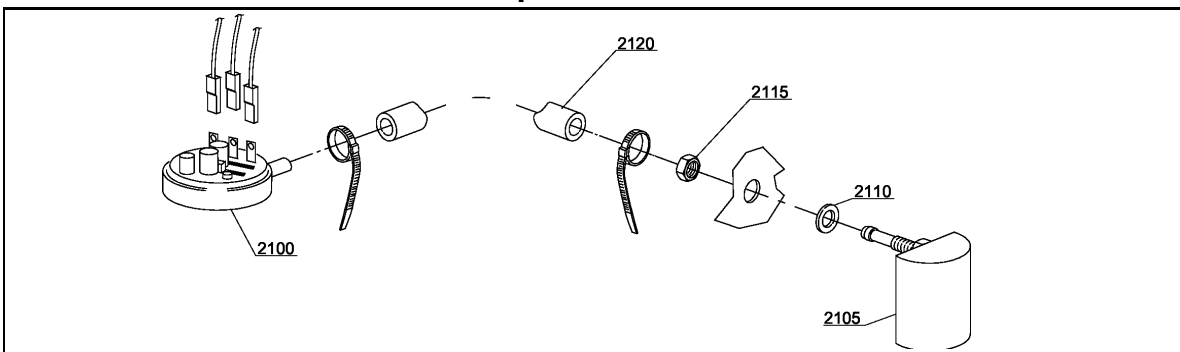
**1.1.13. Drain pump Group**



ID	P/N	DESCRIPTION
2500	<a href="#">2100.17</a>	Drain pump 230V 60Hz (UL)
2505	<a href="#">2101.16</a>	Pipe fitting (minimum 3 pieces)
2510	<a href="#">2100.60</a>	Drain pipe

ID	P/N	DESCRIPTION
2515	<a href="#">2101.17</a>	028 top wash pipe
2525	<a href="#">2101.54</a>	25/40 clamp (minimum 2 pieces)
2530	2101.18	Plastic Tee

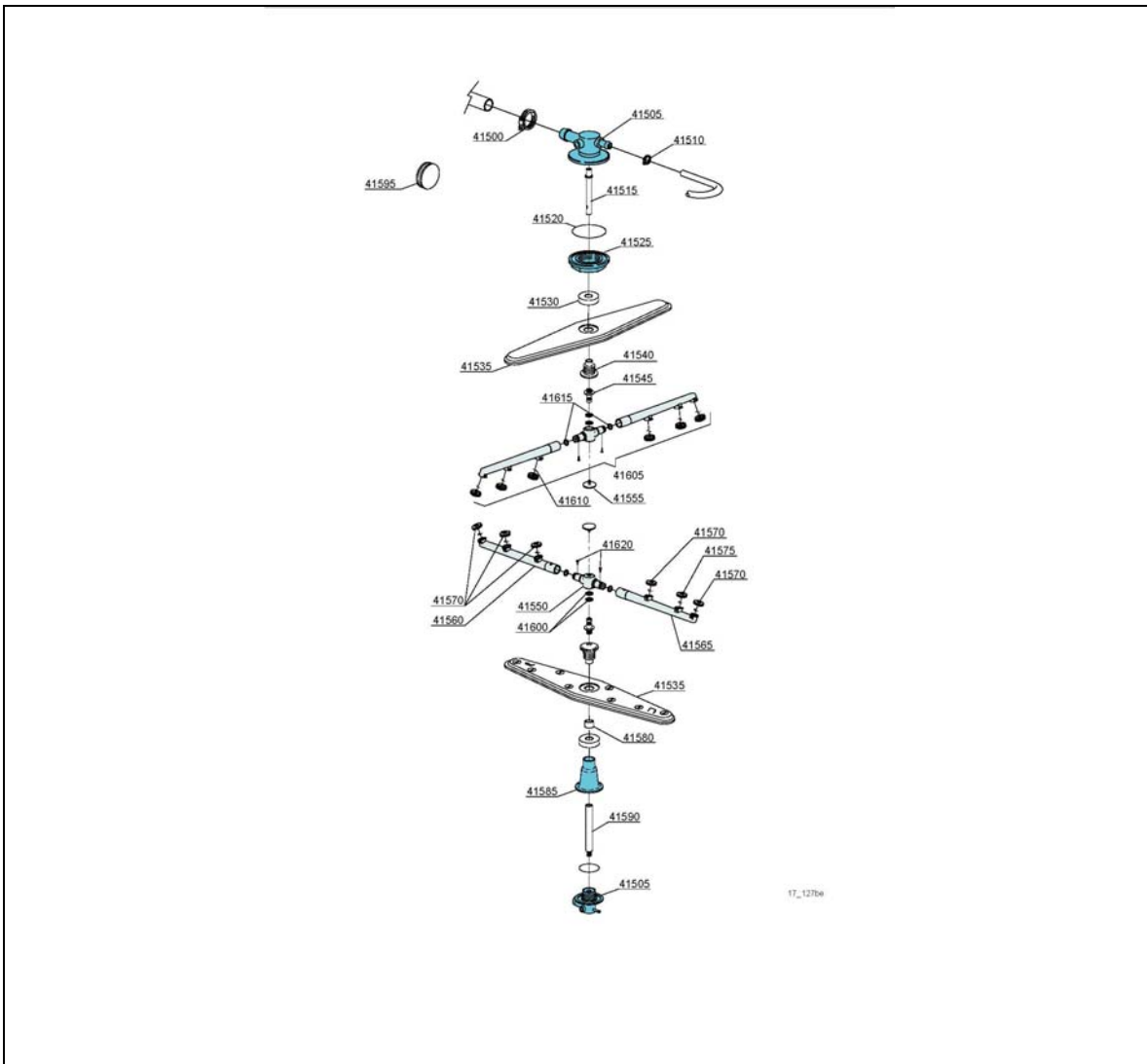
**1.1.14. Pressure Switch Group**



ID	P- Code	DESCRIPTION
2100	<a href="#">2100.41</a>	47-27 pressure switch
2105	<a href="#">2101.60</a>	Grey air trap assembly
2110	2400.77	O-ring (minimum 10 pcs) D14x8x1,5

ID	P- Code	DESCRIPTION
2115	2402.97	M8 stainless steel nut (minimum 10 pcs)
2120	2402.99	4,5X9 EPDM rubber hose (minimum 2mt)

1.1.14. Turret Group



ID	P/N	DESCRIPTION
41500	<a href="#">2101.54</a>	25/40 clamp (minimum 2 pieces)
41505	<a href="#">2100.73</a>	Top/lower turret
41510	<a href="#">2101.42</a>	12/22 clamp (minimum 3 pieces)
41515	2102.11	Upper rinse axle extension
41520	<a href="#">2100.85</a>	6225 OR 160 NBR O-ring (min 5 pcs)
41525	<a href="#">2101.64</a>	Ring nut for fixing turret
41535	<a href="#">2101.04</a>	Stainless steel wash rotor
41540	<a href="#">2102.05</a>	Hub for rotor (inox rinse arm)
41545	<a href="#">2101.65</a>	Rinse axle
41550	<a href="#">2102.12</a>	Hub for rinse arm
41555	<a href="#">2101.67</a>	Rinse arm screw
41560	<a href="#">2102.13</a>	Right plastic rinse arm

ID	P/N	DESCRIPTION
41565	<a href="#">2102.14</a>	Left plastic rinse arm
41570	<a href="#">2102.15</a>	Open plastic rinse nozzle
41575	<a href="#">2102.16</a>	Closed plastic rinse nozzle
41580	<a href="#">2101.70</a>	Hub rotor/pipe coupling spacer
41585	<a href="#">2100.72</a>	Lower pipe coupling
41590	<a href="#">2101.71</a>	Rinse lower distributor connection axle
41595	<a href="#">2101.72</a>	DVGW hole O-ring
41600	<a href="#">2102.17</a>	O-ring for hub (rinse arm)
41605	<a href="#">2102.10</a>	Top/lower rinse arm complete
41610	<a href="#">2102.18</a>	OR R6 NBR O-ring
41615	<a href="#">2102.18</a>	OR R6 NBR O-ring
41620	<a href="#">2102.19</a>	4x10 TCB 8 spax toothed screw