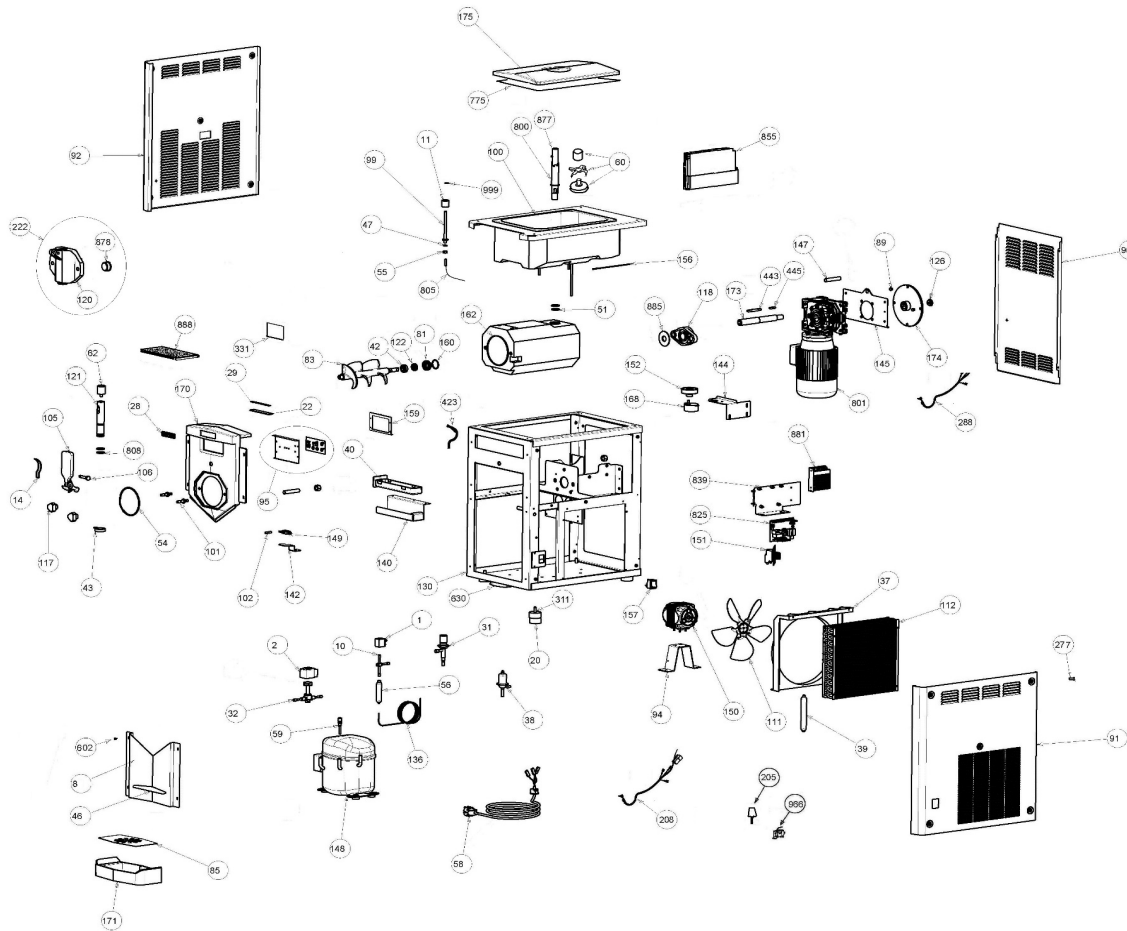


# 01.CHUK1G/115 - 1208-002



Position #	Part #	DESCRIPTION
0	03.BC0005.001	PLASTIC BAG
0	03.HU0002.001	U-GO PACKAGING
0	03.HU0003.001	U-GO EDGE PROTECTION
0	03.HU0004.001	U-GO FRONTAL PROTECTION
0	03.HU0005.001	U-GO UPPER PROTECTION
0	03.HU0006.001	KARMA PALLET
0	04.GC0227.001	CRATHCO STICKER
0	04.IP0373.001	"DANGER-ELECTRICAL SHOCK" STICKER
0	04.ZZ0597.001	LUBRICANT TUBE
0	02.IP0125.001	ETL FOOT
1	04.ZZ0177.001	115/60 COIL
2	04.HU0014/110	115/60 CASTEL COIL
10	04.GT1005/110	115/60 SOLENOID VALVE
11	04.HU0019.001	FLOAT
14	02.KE0061.001	KARMA/KSOFT HANDLE SPRING TH.2
20	02.BB0097.001	FOOT
22	02.HU0151.001	LED PROTECTION
28	04.HU0066.001	KARMA LOGO STICKER
29	02.HU0150.001	KARMA LED KIT

31	04.HU0001.001	PARKER VALVE
32	04.HU0013.001	CASTEL VALVE ART. 1028/2E AT. 1/4 ODS
37	02.IP0119.001	CONVEYOR
38	04.HU0002.001	PARKER EPR139 040915-006 EVAPORATOR
39	04.ZZ0307.001	FILTER
40	02.HU0100.001	DRIP DRAWER
42	04.HU0083.001	KARMA ROTATORY SEAL
43	02.HU0057.001	STAR-SHAPED SPOUT
46	02.HU0147.001	FRONT PANEL DRIP COLLECTOR
47	04.HU0011.001	7,66X1,78 NBR70 O-RING
51	04.HU0081.001	22X3 O-RING
54	04.HU0009.001	101,19X3,53 NBR70 (4400) O-RING
55	ZZ.DA0030.001	NUT
56	04.NI0004.001	FILTER
58	05.BB0005.002	20 AMP PLUG CABLE
59	04.ZZ0047.001	REFILL VALVE
60	05.HU0018.002	UPPER TANK ETL COMPLETE MIXER
62	02.HU0017.001	PISTON TAP EXTENSION
81	02.HU0188.001	GASKET REDUCTION BUSHING
83	02.HU0183.002	KARMA PLASTIC AUGER
85	02.HU0134.001	DRIP TRAY GRILL
86	02.HU0140.001	KARMA STAINLESS STEEL PANEL
89	02.HU0129.001	WHEEL SENSOR PIN
91	02.HU0131.002	KARMA RIGHT WHITE SIDE
92	02.HU0132.002	KARMA LEFT WHITE PANEL
94	02.HU0121.001	KARMA FAN MOTOR SUPPORT
95	02.HU0136.002	KARMA CONTROL PANEL
96	02.HU0030.002	KARMA WHITE BACK PANEL
99	02.HU0069.001	LEVER INDICATOR SHAFT
100	02.HU0146.002	KARMA GRAVITY UPPER TANK
101	02.KE0012.001	FRONT FLANGE FIXING BOLT
102	02.HU0015.001	SAFETY MICROSWITCH PIN
105	02.HU0110.001	KARMA TAP LEVER
106	02.HU0056.001	KARMA TAP LEVER PIN
111	04.BC0004.001	254-25 FAN
112	04.BB0104.001	CONDENSER
117	02.HU0154.002	FLANGE FIXING KNOB
118	04.HU0005.001	UCFL 205 SUPPORT
120	02.HU0014.001	KARMA FRONTAL FLANGE
121	02.HU0016.001	KARMA TAP SHAFT
122	04.HU0084.001	KARMA STATIONARY SEAL
126	02.HU0201.001	WHEEL BLOCKING WASHER
130	02.HU0120.002	KARMA FRAME
136	04.ZZ0168.001	CAPILLARY PIPE
140	02.HU0139.001	DRIP DRAWER SUPPORT
142	02.HU0029.001	KARMA MICROSWITCH BRACKET
144	02.HU0199.001	SUPPORT KARMA N/B GRAV/PM 1
144	02.HU0200.001	SUPPORT KARMA N/B GRAV/PM 2
145	02.HU0126.001	KARMA GEAR MOTOR SUPPORT BRACKET
147	04.HU0008.002	IME WIRED INDUCTIVE SENSOR 4MMM12
148	04.IP0391/115	NEU2168 115/60 COMPRESSOR
149	04.KE0007.001	ETL SAFETY MICRO SWITCH
150	04.BB0016/110	82UL-3016 FAN MOTOR
151	04.BA0031.001	K50 THERMOSTAT
152	02.MD0008.002	MAGNETIC WHEEL
156	02.HU0066.001	KARMA PT1000 2WIRES W=1000MM
157	04.BB0061.001	BLACK MAIN SWITCH
159	02.HU0160.001	CONTROL PANEL FRAME
160	04.BA0030.001	30X3 O-RING
162	02.HU0170.002	KARMA COMPLETE CYLINDER
168	08.CC0002/110	CROUZET MOTOR 115/60
170	02.HU0137.001	KARMA PLASTIC BLACK FRONT PANEL
171	02.HU0133.001	KARMA BLACK DRIP TRAY
173	02.HU0125.001	KARMA SHAFT
174	02.HU0181.001	KARMA P SENSORS WHEEL
175	02.HU0192.001	KARMA ETL LID
205	04.EC0016.001	FUSE PLUG
208	08.HU0013/115	KARMA 115/60 HARNESS
277	ZZ.VI0159.001	5X14 PANEL SCREW
288	08.HU0010/115	KARMA MOTOR CABLE 115/60

311	<a href="#">ZZ.VI0206.001</a>	8X45 SCREW
331	<a href="#">04.HU0064.002</a>	KARMA CONTROL PANEL STICKER
423	<a href="#">08.HU0014/115</a>	KARMA CONTROL PANEL 115/60
443	<a href="#">ZZ.ZZ0504.001</a>	SHAFT KEY 8X7X28
445	<a href="#">ZZ.ZZ0505.001</a>	SHAFT KEY 6X6X28
602	<a href="#">ZZ.VI0005.001</a>	3,5X6,5 SCREW
630	<a href="#">02.HU0021.001</a>	DRIP TRAY SUPPORT
775	<a href="#">02.HU0195.001</a>	KARMA LID ETL STAINLESS STEEL
800	<a href="#">02.HU0197.001</a>	FLOW REGULATION TUBE
801	<a href="#">04.HU0060.001</a>	KARMA GEAR MOTOR 115/60
805	<a href="#">04.HU0020.002</a>	KARMA D.4MM CYLINDRIC WIRED REED
808	<a href="#">04.BA0026.TPS</a>	15,47X3,53 SILICONE O-RING
825	<a href="#">02.HU0149.001</a>	KARMA/KSOFT ELECTRONIC BOARD
839	<a href="#">02.HU0187.001</a>	KARMA BOARD SUPPORT
855	<a href="#">04.ZZ0602/115</a>	VIOLET INVERTER ETL
877	<a href="#">02.HU0198.001</a>	AIR REGULATION PIPE
878	<a href="#">02.HU0159.001</a>	PLASTIC AUGER ADJUSTING BUSHING
881	<a href="#">04.HB0388.001</a>	LRS-50-24 POWER SUPPLIER
885	<a href="#">04.HU0048.001</a>	KARMA SHAFT SEAL
888	<a href="#">02.HU0155.001</a>	UPPER PLATE FRONT SEAL
966	<a href="#">04.BC0050.001</a>	CUT-OUT PRESSURE SWITCH
999	<a href="#">ZZ.RO0054.001</a>	FLAT STAINLESS STEEL SEEGER