

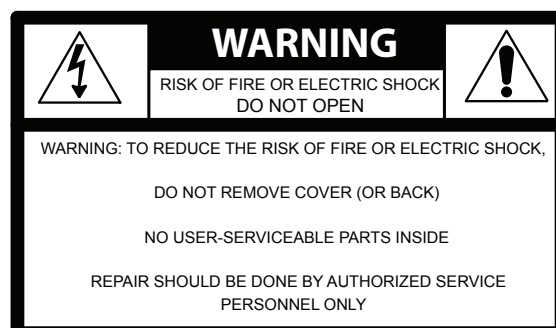
## OPERATING and MAINTENANCE INSTRUCTIONS

### Models: H137UA...D & H13818...D Series Hot Cabinets (Aluminum) H137SUA...D & H138S18...D Series Hot Cabinets (Stainless)

#### ELECTRICAL SPECIFICATIONS:

Model No.	Volts	Watts	Amps	Hertz	Phase	NEMA
H137SUA12D2K H137UA12D2K H138S1834D2K H1381834D2K H137S1332D	120	2000	16.7	60	1	5-20P
H137SUA12D208 H137UA12D208 H138S1834D208 H1381834D208 H137S1332D208	208	2000	9.6	60	1	6-15P
H137SUA12D240 H137UA12D240 H138S1834D240 H1381834D240 H137S1332D240	240	2000	8.3	60	1	6-15P
H137SUA12D H137UA12D H137SUA9D H137UA9D H138S1834D H1381834D	120	1500	12.5	60	1	5-15P
H137SUA9D208 H137UA9D208	208	1500	7.2	60	1	6-15P
H137SUA9D240 H137UA9D240	240	1500	6.2	60	1	6-15P
H137SUA6D H137SUA5D H138S1816D H138S185D	120	1000	8.3	60	1	5-15P
H137SUA6D208 H138S1816D208 H137SUA5D208 H138S185D208	208	1000	4.8	60	1	6-15P
H137SUA6D240 H138S1816D240 H137SUA5D240 H138S185D240	240	1000	4.2	60	1	6-15P

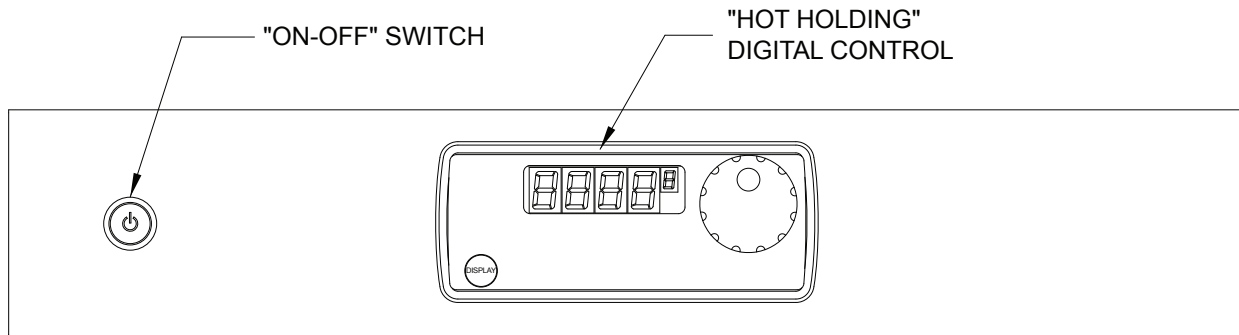
**NOTE:** The above model numbers are basic models. They may include letters: **P, M, E, V, L** or ending with **S, Z, U, HT** and/or **SA**.



Insulated Hot Cabinet	FL-2354
Rev. 6 (1/16)	Page 2 of 5

## OPERATING and MAINTENANCE INSTRUCTIONS

### Models: H137UA...D & H13818...D Series Hot Cabinets (Aluminum) H137SUA...D & H138S18...D Series Hot Cabinets (Stainless)



#### HOW TO INSTALL UNIT:

1. Place cabinet on level floor, in a well ventilated area.
2. Unpack and install inner pan slides parts.
3. Plug cord end into proper wall outlet.

#### HOW TO CHANGE FROM °C TO °F (if needed)

1. Push the switch on; the light will come on.
2. Push and hold the “SET” button and the button in the lower left hand corner together for 5 seconds. You are now entered into the menu.
3. Scroll over the “Unit” and change it to “C” , then scroll to the “END”.

#### FIRST TIME OPERATION:

**NOTE:** A new oven needs to “burn off” manufacturing oils and excess adhesive before its first use.  
***Do NOT load food into oven until this has been done!***

#### FIRST TIME OPERATION (*continued*):

1. Push the switch on; the light will come on.  
**NOTE:** The letters “LOTPR” (Low Temperature) will show on the control panel until it reaches 140°F (60°C).
2. Turn the control knob to show 200°F (93°C). Push the knob to set the temperature. Run the unit for one (1) hour.
3. Push the switch off and let cool.
4. Wipe the inside clean with detergent and hot water.

#### HOW TO START UNIT:

1. Push the switch on; the light will come on.  
**NOTE:** The letters “LOTPR” will show on the control panel until it reaches 140°F (60°C).
2. Turn the “Hot Holding” control knob to a temperature between 140°F (60°C) to 220°F (104°C). Push the knob to set the temperature.
3. Preheat the cabinet for one (1) hour.
4. Put the food into the cabinet.

**NOTE:** Press the “Display” button to see the actual temperature inside the cabinet.

#### TO TURN OFF UNIT:

Push the POWER switch off; the light will go out.

## OPERATING and MAINTENANCE INSTRUCTIONS

### Models: H137UA...D & H13818...D Series Hot Cabinets (Aluminum) H137SUA...D & H138S18...D Series Hot Cabinets (Stainless)

### **WARNING**

**BEFORE CLEANING CABINET:**

1. Allow the cabinet to cool.
  2. Do NOT use abrasives or harsh chemicals.
- Is your cabinet aluminum or stainless steel construction? Be sure your cleaner is suitable for that material.**

**Note:** Stainless Steel cabinets have an “S” in their model numbers.

**Cleaning hints:**

1. Wipe up spills as soon as possible.
2. Clean cabinet regularly to avoid heavy dirt build-up.
3. Make a test spot with cleaner.
4. Follow manufacturer’s directions on cleaner.
5. Do not mix cleaners.
6. Avoid drips and splashes.
7. Do not use “Cres Clean” on plastic parts or labels.

**HOW TO CLEAN THE UNIT:**

Soil	Cleaner	Method
Dirt	Mild Detergent* and hot water, or mild abrasive cleaner.	1. Wipe with soft, damp cloth. 2. Rinse with hot water. 3. Wipe Dry.
	Steam (no strong alkaline additive)	1. Rinse after steam cleaning. 2. Wipe Dry
Fingerprints, grease, oil	Mild abrasive cleaner. Oily or waxy cleaner.	Apply with soft, clean cloth.
	Chemical oven cleaner.	Follow oven cleaner manufacturer’s instructions
Water Spots	Mild abrasive cleaner.	1. Apply with soft, clean cloth. 2. Wipe with damp cloth.
<i>*Mild detergent includes soaps and non-abrasive cleaners.</i>		

**Note:** Gaskets are removable for cleaning.

**TROUBLE-SHOOTING CHART:**

**FAILURE:**

1. Switch light or control display does NOT light up.
2. Unit gets too hot or won’t shut off.
3. Unit does not heat.
4. Thermostat control reads “err oo”

**POSSIBLE CAUSE:**

- 1a. Circuit breaker/fuse to wall outlet is blown
- 1b. Cord is unplugged from wall outlet.
- 1c. Switch is “OFF.”
- 1d. Switch or control defective.
- 2a. Relay or control defective.

***UNPLUG UNIT FROM WALL OUTLET***

3. Defective heater, relay, blower or control.
4. Temperature probe defective.

Insulated Hot Cabinet	<b>FL-2354</b>
Rev. 6 (1/16)	Page 4 of 5

## OPERATING and MAINTENANCE INSTRUCTIONS

### Models: H137UA...D & H13818...D Series Hot Cabinets (Aluminum) H137SUA...D & H138S18...D Series Hot Cabinets (Stainless)

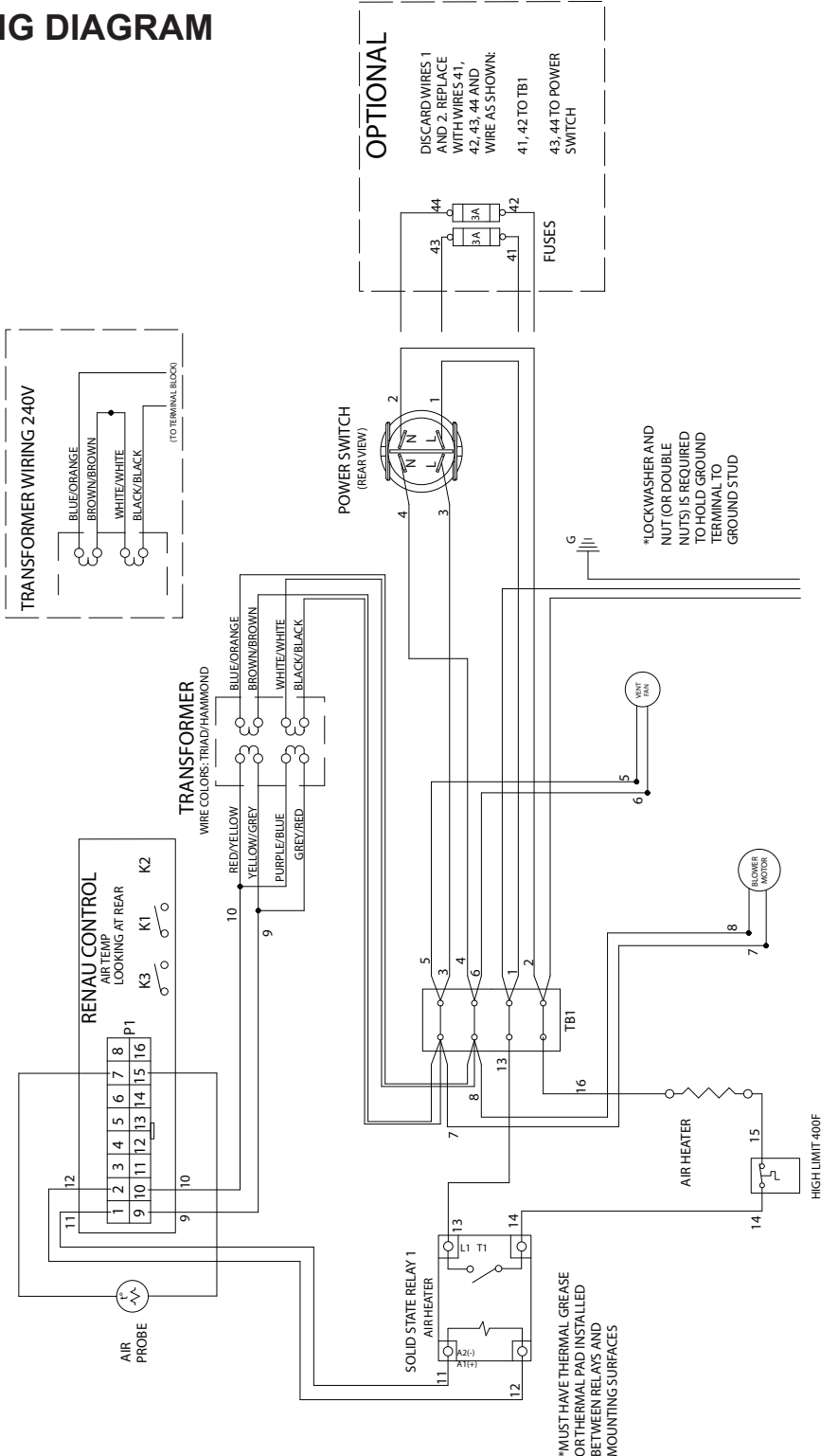
#### REPLACEMENT PARTS: H137UA...D/H1381834D and H137SUA...D/H138S1834D

		<b>120 V</b>	<b>208 V</b>	<b>240 V</b>
Blower Kit		0769-180-K	0769-182-K	0769-182-K
Heater Kit	2000W	0811-022-K	0811-185-K	0811-023-K
	1500W	0811-019-K	0811-020-01-K	0811-020-K
	1000W	0811-214-K	0811-250	0811-215
High Limit		0848-033	0848-033	0848-033
Power Cord	2000W	0810-065-12-K	0810-039-07	0810-039-07
	1500W	0810-029-06	0810-039-07	0810-039-07
	1000W	0810-029-06	0810-039-07	0810-039-07
Relay, Solid State		0857-136	0857-136	0857-136
Switch, Power		0808-125	0808-125	0808-125
Thermostat Control (Hot)		0848-092-01-K	0848-092-01-K	0848-092-01-K
Thermostat Probe		0848-091-K	0848-091-K	0848-091-K
Terminal Block		0852-119	0852-119	0852-119
Transformer		0769-197	0769-197	0769-197
Vent Fan		0769-165	0769-174	0769-174

Door, complete	Aluminum	UA12/UA6/1834	1221-578-K
	Aluminum	UA9	1221-599-K
	Stainless Steel	UA12/UA6/1834	1221-579-K
	Stainless Steel	UA9	1221-600
	Stainless Steel	UA5	1221-597
	Stainless Steel	S1332D	1221-585
Door, gasket	Aluminum	UA12/UA6/1834	0861-235-K
	Aluminum	UA9	0861-236-K
	Stainless Steel	UA12/UA6/1834	0861-185-K
	Stainless Steel	UA9	0861-182-K
	Stainless Steel	UA5	0861-250-K
	Stainless Steel	S1332D	0861-274
Door, hinge			0519-074-K
Door, hinge (Aluminum Cabinet)			0519-087-K
Door Latch			1006-122-01-K
Door Handle (Aluminum Cabinet)			0911-111
Handle, Side Pull			0911-087
Casters, 5"			0569-306-K
Casters, 5" w/Brake			0569-306-BK
Wire Angles ( 2 per kit)			0621-281-K
Pan Rack Insert (-1834 model)			1103-109
Transport Hasp Latch (Aluminum Cabinet)			1246-031-K
(Stainless Cabinet)			1246-038-K

**OPERATING and MAINTENANCE INSTRUCTIONS**  
**Models: H137UA...D & H13818...D Series Hot Cabinets (Aluminum)**  
**H137SUA...D & H138S18...D Series Hot Cabinets (Stainless)**

**WIRING DIAGRAM**



**OPTIONAL**  
 DISCARD WIRES 1 AND 2. REPLACE WITH WIRES 41, 42, 43, 44 AND WIRE AS SHOWN: 41, 42 TO TB1 43, 44 TO POWER SWITCH

**TRANSFORMER WIRING 240V**  
 BLUE/ORANGE  
 BROWN/BROWN  
 WHITE/WHITE  
 BLACK/BLACK  
 (TO TERMINAL BLOCK)

\*LOCKWASHER AND NUT (OR DOUBLE NUTS) IS REQUIRED TO HOLD GROUND TERMINAL TO GROUND STUD

\*MUST HAVE THERMAL GREASE OR THERMAL PAD INSTALLED BETWEEN RELAYS AND MOUNTING SURFACES