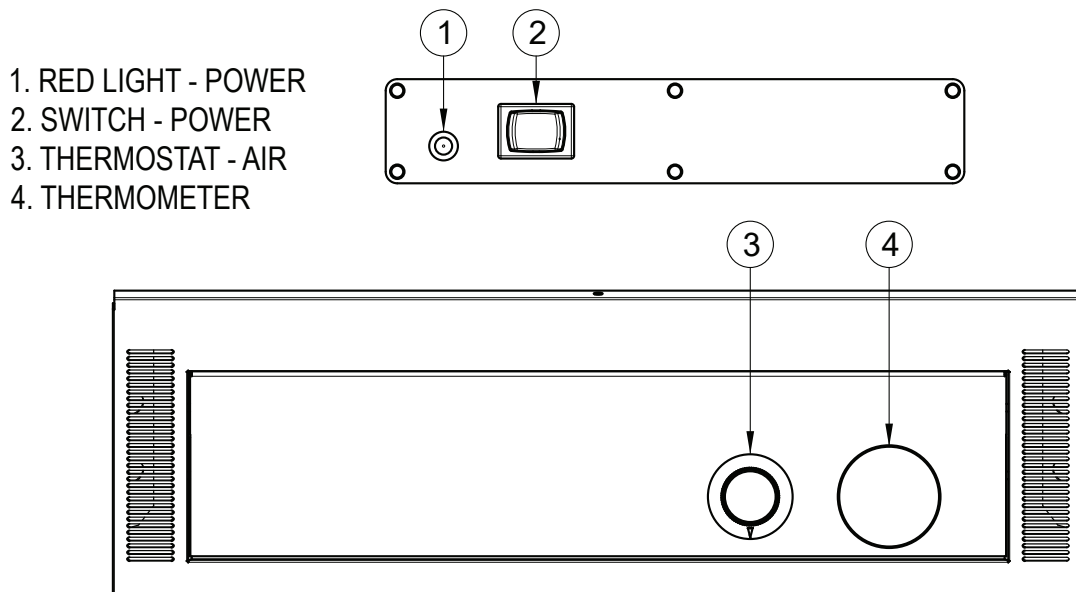


## OPERATING and MAINTENANCE INSTRUCTIONS

### H135SUA11A & H135SUA6A Hot Cabinets (Stainless Steel)

Model No.	Volts	Watts	Amps	Hertz	Phase	NEMA
H135SUA6A H135SUA11A	120	1500	12.3	60	1	5-15P
H135SUA6A240 H135SUA11A240	240	1500	6.1	60	1	6-15P

The above are base model numbers. Other characters may be present.



#### HOW TO INSTALL UNIT:

- Place cabinet near warm ovens if possible. For best results, do *NOT* put in drafty areas or near ventilating systems.
- Plug cord end into proper wall outlet.

#### HOW TO START UNIT:

- Turn thermostat to #10.
- Preheat cabinet for 30 minutes.
- Put food into cabinet.
- Turn thermostat to #8 and close door.

**NOTE:** No. 9 setting = approx. 190°F (88°C)  
No. 7 setting = approx. 165°F (74°C)

Proper food holding temperature is 140°F (60°C) or higher. The thermometer shows the temperature inside.

#### TO TURN OFF UNIT:

- Turn thermostat off.
- Turn the POWER switch off.

## OPERATING and MAINTENANCE INSTRUCTIONS H135SUA11A & H135SUA6A Hot Cabinets (Stainless Steel)



### HOW TO CLEAN THE CABINET:

**⚠ WARNING** *BEFORE* cleaning the cabinet:

1. Allow cabinet to cool.
2. Do NOT use abrasives or harsh chemicals.

### Cleaning Notes:

1. Wipe up spills as soon as possible.
2. Clean cabinet regularly to avoid heavy dirt build-up.
3. Make a test spot with cleaner.
4. Follow manufacturer's directions on cleaner.
5. Do not mix cleaners.
6. Avoid drips and splashes.

### HOW TO CLEAN UNIT:

	Soil	Cleaner	Method
DOORS Stainless Steel	Dirt, Grease and Oil	Mild Detergent* and water.	1. Wipe with soft, damp cloth. 2. Rinse well.
CABINETS Stainless Steel	Dirt	Mild detergent* and hot water, or mild abrasive cleaner.	1. Use soft, damp cloth. 2. Rinse with hot water. 3. Wipe dry.
		Steam (No strong alkaline additive)	1. Rinse after steam cleaning. 2. Wipe dry.
	Fingerprints, Grease and Oil	Chemical oven cleaner for cabinet material	Follow oven manufacturer's directions
		Mild abrasive cleaner; oily or waxy cleaner	Apply with clean, soft cloth. Wipe with damp cloth.
Water Spots	Mild abrasive cleaner. Oily or waxy cleaner.	Apply with soft, clean cloth. Wipe with damp cloth.	

## OPERATING and MAINTENANCE INSTRUCTIONS H135SUA11A & H135SUA6A Hot Cabinets (Stainless Steel)

### TROUBLE-SHOOTING CHART:

<b>FAILURE</b>	<b>POSSIBLE CAUSE</b>
1. <i>Red</i> light at switch does NOT light.	1a. Switch is “ <i>OFF</i> ”. 1b. Cord is unplugged from wall outlet. 1c. Circuit breaker/fuse to wall outlet is blown.
2. Unit does not heat.	2a. Thermostat set too low or is “ <i>OFF</i> ”. 2b. Switch is “ <i>OFF</i> ”. 2c. Defective electrical parts.
3. Unit gets too hot or won’t shut off.	3a. Defective electrical parts. <b>UNPLUG UNIT FROM WALL OUTLET.</b>
4. Blower does not work or makes noise.	4a. Defective blower.

**NOTE:** Optional digital thermometer will flash if cabinet temperature is below 140° F or above 250° F.  
Call the factory if you need different settings.  
If cause is none of the above, refer to our list of Authorized Service Centers, FL-1400.

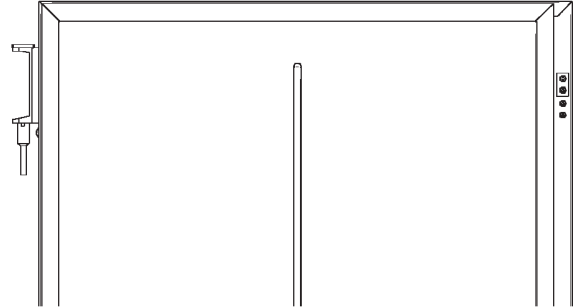
Hot Cabinets	<b>FL-2408</b>
Rev. 0 (1/19)	Page 4 of 7

## OPERATING and MAINTENANCE INSTRUCTIONS H135SUA11A & H135SUA6A Hot Cabinets (Stainless Steel)

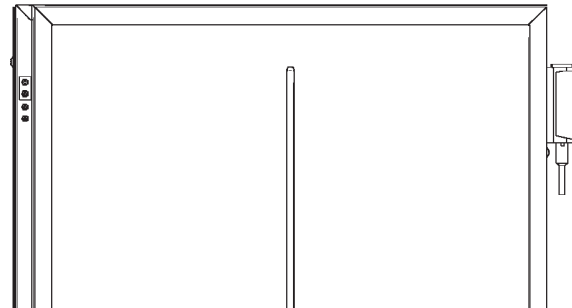
### HOW TO REVERSE DOOR SWING FOR OPPOSITE HAND:

1. Remove hinge covers with a screwdriver.
2. Open door and lift up to remove door from cabinet.
3. Unscrew and re-mount the hinges and latch strike to the opposite sides of the cabinet.
4. Remove the door hinges and magnets.
5. Move extra screws to opposite end of hole patterns.
6. Mount hinges and magnets. Make sure hinges are mounted post down.
7. Put door onto cabinet and adjust as necessary.
8. Snap on hinge covers.

Right Hand



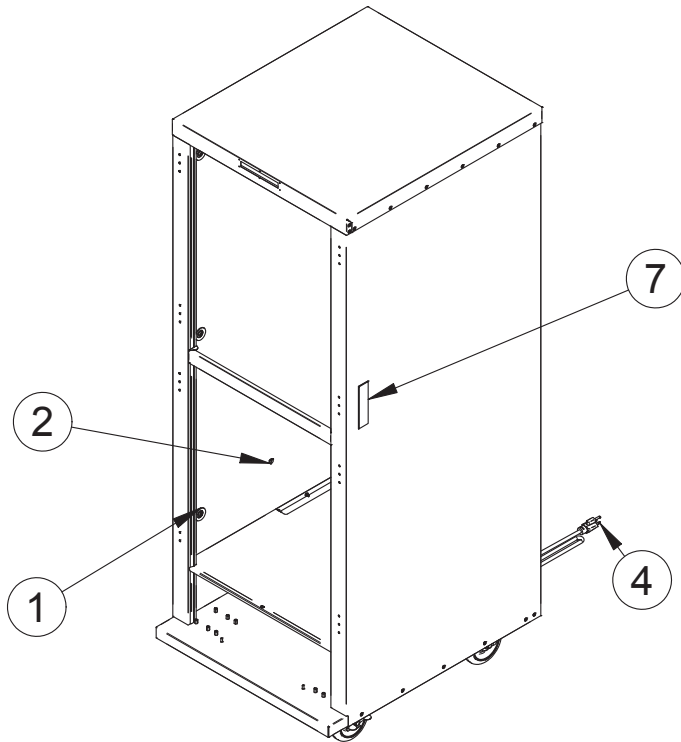
Left Hand



## OPERATING and MAINTENANCE INSTRUCTIONS

### H135SUA11A & H135SUA6A Hot Cabinets (Stainless Steel)

#### REPLACEMENT PARTS: CABINET



<b>CABINET PARTS</b>		
PART NO.	DESCRIPTION	ITEM
0567-697	WASHER, 1.500	1
0567-822	SHOULDER SCREW, 10-24	2
0806-011	CLAMP - CABLE, 1/4" DIA.	3
0810-029-06	CORD SET 15A, 125V 12.5"LG	4
0818-057	STRAIN RELIEF BUSHING	5
0852-091	TERMINAL BLOCK	6
0911-087	HANDLE	7
1202-013	BUSHING 2"	8
5032-024	HEAT SHIELD	9
5258-010	CORD CLIP	10
5361-014	PANEL, VENT	11

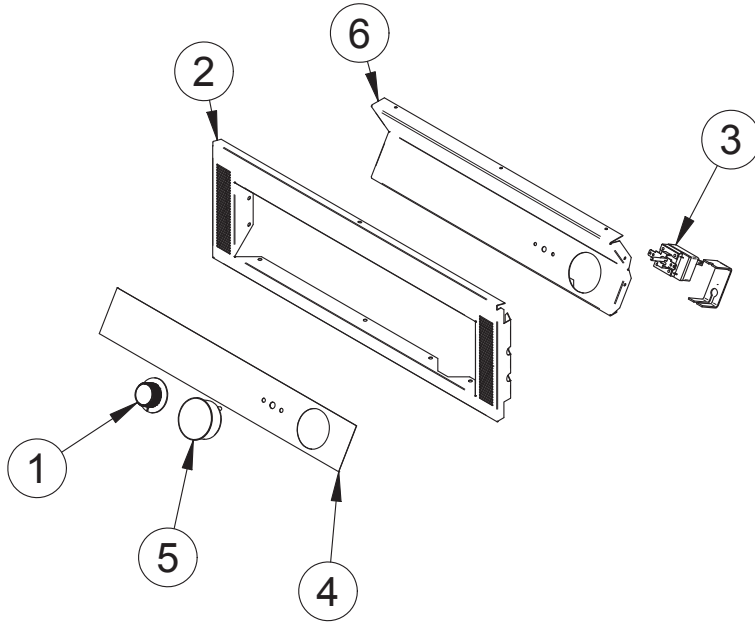
<b>MISC PARTS</b>	
PART	DESCRIPTION
0569-306	CASTER, 5"
0569-306-B	CASTER, 5",
1221-684	DOOR, WINDOW*

\*FOR RED DOORS ADD -R

## OPERATING and MAINTENANCE INSTRUCTIONS

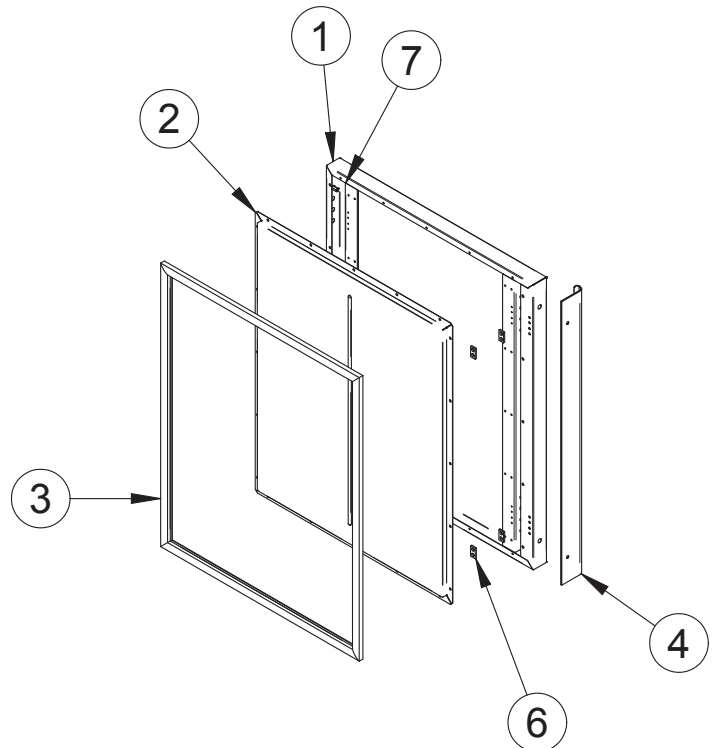
### H135SUA11A & H135SUA6A Hot Cabinets (Stainless Steel)

#### REPLACEMENT PARTS: CABINET



<b>CONTROL PANEL PARTS</b>		
PART NO.	DESCRIPTION	ITEM
0595 061	KNOB	1
0750-021	CONTROL PANEL, FACE	2
0848-062	THERMOSTAT	3
1115-661	LABEL, H135 A SERIES	4
5238-030	THERMOMETER - ANALOG	5
6537-402	CONTROL PANEL	6

<b>SOLID DOOR PARTS</b>		
PART NO.	DESCRIPTION	ITEM
* 0685-512	DOOR, OUTER	1
0686-274-SS	DOOR, INNER	2
0861-271	GASKET, DOOR	3
0911-129	PULL HANDLE	4
1228-379	INSULATION	5
1447-031	MAGNET	6
1466-693	REINFORCMENT, DOOR	7

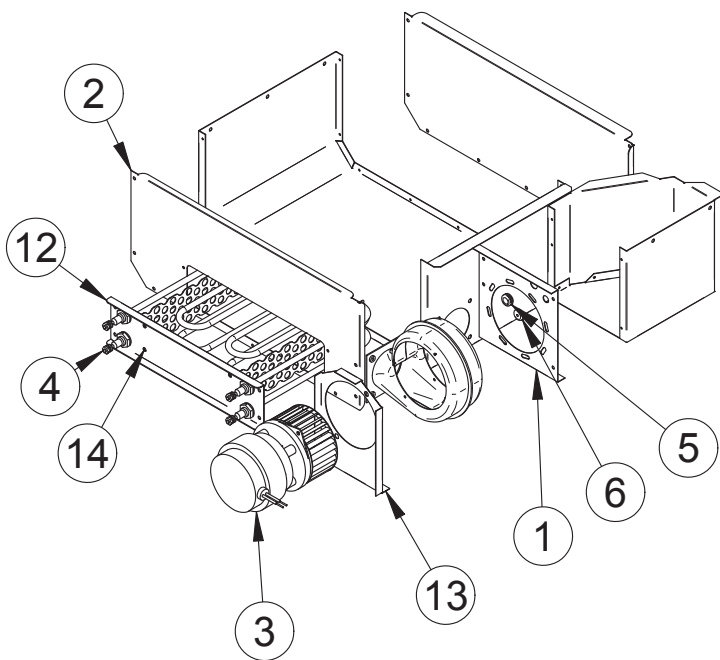


\*FOR RED DOORS ADD -R

## OPERATING and MAINTENANCE INSTRUCTIONS

### H135SUA11A & H135SUA6A Hot Cabinets (Stainless Steel)

#### REPLACEMENT PARTS: HOT UNIT



HOT UNIT PARTS		
PART NO.	DESCRIPTION	ITEM
0553-934	COVER, BLOWER	1
0553-935	COVER, HEATER BOX	2
0769-180	BLOWER ASSY, 120V	3
0811-285-01	HEATER 750W/120V	4
1202-008	GROMMET	5
1202-016	GROMMET, HI TEMP SILICONE	6
1228-473	INSUALTION, HEATER	7
1228-475	INSUALTION, BLOWER	8
1228-477	INSULATION, HEAT SHIELD	9
1228-478	INSULATION, BOTTOM	10
1228-480	INSULATION, BLOWER	11
1410-032	BRKT, HEATERS	12
5032-023	SHROUD, BLOWER	13
5032-025	DIFFUSER	14

SWITCH PLATE PARTS		
PART NO.	DESCRIPTION	ITEM
0766-101	LIGHT, RED, 120VAC	1
0807-173	TERMINAL, QC	2
0808-131	SWITCH, ROCKER,	3
0817-014	LEVERNUT, WIRE - 3 POLE	4
0817-015	LEVERNUT, WIRE - 5 POLE	5
0988-022	COVER, SWITCH	6
1115-662	COVER, SWITCH	7

