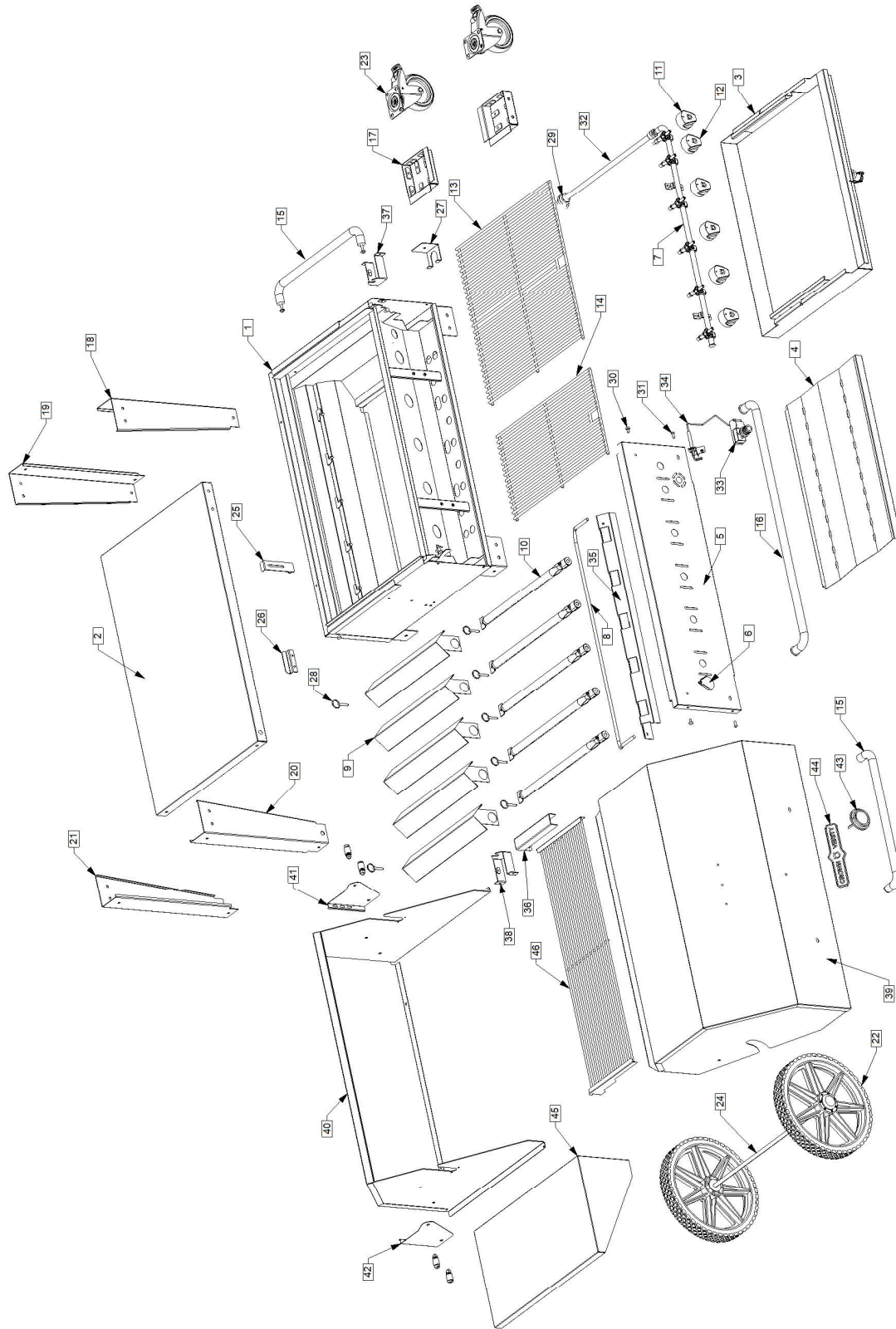


MCB Grill - Exploded Parts View



Parts List

ITEM	DESCRIPTION	PART NUMBER	MODEL
Not Shown	30" GRILL BODY	ZCV-8020-1	MCB 30
1	36" GRILL BODY	ZCV-3020-1	MCB 36
Not Shown	48" GRILL BODY	ZCV-4020-1	MCB 48
Not Shown	60" GRILL BODY	ZCV-6020-1	MCB 60
Not Shown	72" GRILL BODY	ZCV-7020-1	MCB 72
Not Shown	30" UNDERSHELF	ZCV-8020-2	MCB 30
2	36" UNDERSHELF	ZCV-3020-2	MCB 36
Not Shown	48" UNDERSHELF	ZCV-4020-2	MCB 48
Not Shown	60" UNDERSHELF	ZCV-6020-2	MCB 60
Not Shown	72" UNDERSHELF	ZCV-7020-2	MCB 72
Not Shown	24"GREASE TRAY	ZCV-4020-3	MCB 48
Not Shown	30"GREASE TRAY	ZCV-8020-3	MCB 30/60
3	36"GREASE TRAY	ZCV-3020-3	MCB 36/72
Not Shown	24" DEFLECTOR	ZCV-4020-4	MCB 48
Not Shown	30" DEFLECTOR	ZCV-8020-4	MCB 30/60
4	36" DEFLECTOR	ZCV-3020-4	MCB 36/72
Not Shown	30" FACE PLATE	ZCV-8020-5	MCB 30
5	36" FACE PLATE	ZCV-3020-5	MCB 36
Not Shown	48" FACE PLATE	ZCV-4020-5	MCB 48
Not Shown	60" FACE PLATE	ZCV-6020-5	MCB 60
Not Shown	72" FACE PLATE	ZCV-7020-5	MCB 72
6	WING DOOR	ZCV-3020-6	ALL
Not Shown	COMBUSTION MANIFOLD L/H 24" COMPLETE	ZCV-CM-24-L-C	MCB 48 (LP)
Not Shown	COMBUSTION MANIFOLD R/H 30" COMPLETE	ZCV-CM-30-R-C	MCB 30/48
Not Shown	COMBUSTION MANIFOLD L/H 30" COMPLETE	ZCV-CM-30-L-C	MCB 60 (LP)
7	COMBUSTION MANIFOLD R/H 36" COMPLETE	ZCV-CM-36-R-C	MCB 36/72
Not Shown	COMBUSTION MANIFOLD L/H 36" COMPLETE	ZCV-CM-36-L-C	MCB 72 (LP)
Not Shown	COMBUSTION MANIFOLD 48" MCB INF COMPLETE	ZCV-CM-48MCB-NG-C	MCB 48 (NG)
Not Shown	MANIFOLD - NATURAL GAS MCB 60	ZCV-MCB60-6003	MCB 60 (NG)
Not Shown	MANIFOLD - NATURAL GAS MCB 48	ZCV-MCB72-6003	MCB 72 (NG)
Not Shown	LIGHTER TUBE, 30-BI	ZCV-8032-BI	MCB 30
Not Shown	LIGHTER TUBE, R/H-60 (FRONT LIGHT MODEL)	ZCV-6033-BI	MCB 60
8	LIGHTER TUBE, 36-BI	ZCV-3032-BI	MCB 36/72
Not Shown	LIGHTER TUBE, R/H-72 (FRONT LIGHT MODEL)	ZCV-7033-BI	MCB 72
Not Shown	MCB48 LIGHTER TUBE .500 DIA	ZCV-4832-MCB	MCB 48
9	RADIANT, STAINLESS, (ALL CV GRILLS)	ZCV-2070	ALL
10	BURNER, TUBULAR, STAINLESS, (ALL CV GRILLS)	ZCV-2060	ALL

Not Shown	ORIFICE, BURNER, LP #56, (ALL CV GRILLS)	ZCV-2032	ALL
Not Shown	ORIFICE, LIGHTER TUBE, LP. #70 (ALL CV GRILLS)	ZCV-2042	ALL
Not Shown	REGULATOR & HOSE ASSY, LP, TWO-STAGE, (MCB)	ZCV-2200	ALL
Not Shown	REGULATOR, 1/2", NATURAL GAS (MCB & BI-30,36,48) OPTIMAL TEMP REG	ZCV-2180-2	ALL
Not Shown	LABEL, LIGHTING INSTRUCTIONS, MCB, (ALL MODELS)	ZCV-2202	ALL
Not Shown	MANUAL, MCB (ALL MODELS)	ZCV-2223	ALL
11	KNOB, PILOT, MCB, RED - DIE CAST	ZCV-2090-2	ALL
12	KNOB, BURNER, MCB, BLACK - DIE CAST	ZCV-2080-2	ALL
13	GRATE, COOKING, 22", -- MCB	ZCV-2150	ALL
14	GRATE, COOKING, 12" -- MCB	ZCV-2170	ALL
Not Shown	GRATE, COOKING, 14" -- MCB	ZCV-2160	ALL
15	HANDLE,18", -- RD, MCB, PF-1,	ZCV-2105	ALL
Not Shown	CRASH BAR, 27", -- MCB-30,60, BI-30	ZCV-2208	MCB 30/60
16	CRASH BAR, 33" -- MCB-36,72, BI-36, PF-2	ZCV-2209	MCB 36/72
Not Shown	CRASH BAR, 45", -- MCB-48, BI-48, TG'S	ZCV-2210	MCB 48
17	CASTER MOUNT - PLATE-- MCB	ZCV-2222	ALL
18	LEG, L/H, CASTER END, -- MCB	ZCV-2212	ALL
19	LEG, R/H, CASTER END, -- MCB	ZCV-2213	ALL
20	LEG, L/H, AXLE END, -- MCB	ZCV-2217	ALL
21	LEG, R/H, AXLE END, -- MCB	ZCV-2218	ALL
22	WHEEL, 14", STANDARD, MCB'S	ZCV-2141	ALL
23	CASTER, 5", W BRAKE, -- ALL MCB & PF'S (with mounting plate)	ZCV-2216-P	ALL
24	AXLE, MCB, -- 30" 36" 48"	ZCV-2215	ALL
Not Shown	NUT, FULL HEX, #10-24	ZCV-1024	ALL
Not Shown	MACHINE SCREW, #10-24x1/2", PAN PHILLIPS (MANIFOLDS)	ZCV-2073	ALL
Not Shown	LOCK WASHER, INT. TOOTH, 1/4"	ZCV-2018	ALL
Not Shown	HEX CAP SCREW, 1/4-20x5/8" (HANDLES)	ZCV-2026	ALL
Not Shown	FENDER WASHER, 1/4" x 1.25" (HANDLES)	ZCV-2019	ALL
Not Shown	NUT, FULL HEX, 1/4"-20	ZCV-2017	ALL
Not Shown	MACHINE SCREW, 1/4-20x5/8", ROUND-SLOT, (TANK BRKT)	ZCV-2196	ALL
Not Shown	WING BOLT, 1/4"-20x1" -- MCB TANK BRACKET	ZCV-2027	ALL
Not Shown	LOCK WASHER,5/16", INT. TOOTH (MCB LEGS)	ZCV-2013	ALL
Not Shown	NUT, FULL HEX, 5/16-18 (MCB LEGS)	ZCV-2014	ALL
Not Shown	MACHINE SCREW, ROUND-SLOT, 5/16-18 x 5/8" (MCB LEGS)	ZCV-2142	ALL
Not Shown	FLAT WASHER, 1/2", -- AXLE	ZCV-2146	ALL
Not Shown	COTTER PIN, 1/8"x1, -- AXLE	ZCV-2148	ALL

Not Shown	HEX CAP SCREW, 1/2-13 x 3/4", SS (MCB CASTER)	ZCV-2031	ALL
25	TANK BRACKET, UPPER W/O HDWE -- MCB-LP	ZCV-2103	ALL (LP)
26	TANK BRACKET, LOWER W/O HDWE -- MCB-LP	ZCV-2104	ALL (LP)
27	HOSE HANGER, SS, -- MCB'S-LP	ZCV-2151	ALL (LP)
Not Shown	UTILITY LIGHTER	ZCV-5006-1	ALL
Not Shown	CAP, FGH, C/W CHAIN -- MCB WATER PAN	ZCV-2153	ALL
Not Shown	FLAT WASHER, (.195x.354 x .057-.065) 18.8 FOR BI & MCB WING DOOR	ZCV-1047	ALL
28	PIN, ROLL DOME, C/W RING -- RD'S	ZCV-2020	ALL
Not Shown	FRONT SHELF MOUNTING BOLT, SS -- (RFS) - LONGER THREAD	ZCV-2029-2	ALL
29	ELBOW, 1/2" FPT, BRASS	ZCV-2147BR	ALL
Not Shown	WASHER 1/4 - 20 FOR PHS-5	ZSC-9216	ALL
Not Shown	HEX CAP SCREW, 1/4-20x1-1/2" (HANDLES)	ZCV-2504	ALL
30	SHELF MOUNTING BOLT, SS -- (RES, DS) - SHORTER THREAD	ZCV-2029	ALL
31	MACHINE SCREW 1/4-20 x 1/2" SS	ZCV-2501	ALL
32	EXTENSION PIPE-MCB (581mm, 22") 1/2NPT Male, 3/4" Female Flare	ZCV-CM-EXT	ALL
33	PIZZA PIEZO IGNITOR	ZCV-2138	ALL
34	IGNITOR KIT	ZCV-IGNITOR-K	ALL
Not Shown	30" PILOT TUBE COVER RH	ZCV-8020-6	MCB 30/60
Not Shown	30" PILOT TUBE COVER LH	ZCV-6020-6	MCB 60
35	36" PILOT TUBE COVER RH	ZCV-3020-6	MCB 36/72
Not Shown	36" PILOT TUBE COVER LH	ZCV-7020-6	MCB 72
Not Shown	48" PILOT TUBE COVER	ZCV-4020-6	MCB 48
36	LIGHTER TUBE COVER	ZCV-3020-7	ALL
37	PILOT TUBE COVER BRACKET RH	ZCV-3020-8	ALL
38	PILOT TUBE COVER BRACKET LH	ZCV-3020-9	ALL
Not Shown	NIPPLE, 1/2"MPT, W/HEX, BRASS	ZCV-2242	ALL (NG)
Not Shown	VENT PROTECTOR	ZCV-2193	ALL (NG)
Not Shown	HOSE, 1/2"x10', WITH Q.D. SET, LP/NG	ZCV-NGH05	ALL (NG)
Not Shown	ROLL DOME OUTER, MCB-30/60, NOT ASSEMBLED	ZCV-6010-1	MCB 30/60
Not Shown	ROLL DOME INNER, MCB-30/60, NOT ASSEMBLED	ZCV-6010-2	MCB 30/60
39	ROLL DOME OUTER, MCB-36/72, NOT ASSEMBLED	ZCV-3010-1	MCB 36/72
40	ROLL DOME INNER, MCB-36/72, NOT ASSEMBLED	ZCV-3010-2	MCB 36/72
Not Shown	ROLL DOME OUTER, MCB-48, NOT ASSEMBLED	ZCV-4010-1	MCB 48
Not Shown	ROLL DOME INNER, MCB-48, NOT ASSEMBLED	ZCV-4010-2	MCB 48

Not Shown	ROLL DOME OUTER, MCB-60- (single dome 60"), NOT ASSEMBLED	ZCV-8010-1	MCB 60
Not Shown	ROLL DOME INNER, MCB-60- (single dome 60"), NOT ASSEMBLED	ZCV-8010-2	MCB 60
41	BUN RACK BRACKET RH	ZCV-3010-3	ALL
42	BUN RACK BRACKET LH	ZCV-3010-4	ALL
43	THERMOMETER, 800 DEG., BI-METAL -- RD'S	ZCV-2005	ALL
44	NAME PLATE, CV NEW LOGO 2016, BRONZE	ZCV-2003-16	ALL
45	END SHELF, REMOVEABLE, FOR MCB	ZCV-RES	ALL
Not Shown	BUN RACK, 30" --RD-30/60	CV-ABR-30	MCB 30/60
46	BUN RACK, 36", -- RD-36/72	CV-ABR-36/72	MCB 36/72
Not Shown	BUN RACK, 48", -- RD-48 & TG	CV-ABR-48	MCB 48
Not Shown	BUN RACK, 60" -- RD-60	CV-ABR-60	MCB 60

Not finding the part you're looking for?

To find parts for older models or specific components that aren't listed, please reach out to **Parts & Service at 1-888-505-7240** or email us at service@crownverity.com