

**24ACA4
Comfort™ Series 14 Air Conditioner
with Puron® Refrigerant
1 – 1/2 to 5 Tons (Sizes 18 To 60)**



Turn to the Experts.™

Product Data



A04030



Comfort
SERIES

Carrier Air Conditioners with Puron® refrigerant provide a collection of features unmatched by any other family of equipment. The 24ACA has been designed utilizing Carrier's Puron refrigerant. The environmentally sound refrigerant allows you to make a responsible decision in the protection of the earth's ozone layer.

As an Energy Star® Partner, Carrier Corporation has determined that this product meets the Energy Star® guidelines for energy efficiency. Refer to the combination ratings in the Product Data for system combinations that meet Energy Star® guidelines.

NOTE: Ratings contained in this document are subject to change at any time. Always refer to the AHRI directory (www.ahridirectory.org) for the most up-to-date ratings information.

INDUSTRY LEADING FEATURES / BENEFITS

Efficiency

- 14 SEER / 11.5 - 12.0 EER
- Microtube Technology™ refrigeration system
- Indoor air quality accessories available

Sound

- Sound level as low as 74 dBA
- Compressor sound blanket

Comfort

- System supports Thermidistat™ or standard thermostat controls

Reliability

- Puron® refrigerant - environmentally sound, won't deplete the ozone layer and low lifetime service cost.
- Front-seating service valves
- Scroll compressor
- Internal pressure relief valve
- Internal thermal overload
- Low pressure switch
- High pressure switch
- Filter drier
- Balanced refrigeration system for maximum reliability

Durability

WeatherArmor™ protection package:

- Solid, Durable sheet metal construction
- Steel louver coil guard
- Baked-on, complete outer coverage, powder paint
- Color matched ceramic coated screws

Applications

- Long-line - up to 250 feet (76.2 m) total equivalent length, up to 200 feet (60.96 m) condenser above evaporator, or up to 80 ft. (24.38 m) evaporator above condenser (See Longline Guide for more information.)
- Low ambient (down to -20°F/-28.9°C)) with accessory kit

Warranty

- 10 year limited compressor warranty
- 5 year limited parts warranty

MODEL NUMBER NOMENCLATURE

1	2	3	4	5	6	7	8	9	10	11	12	13
N	N	A	A	A/N	N	N	N	A/N	A/N	A/N	N	N
2	4	A	C	A	4	3	6	A	0	0	3	0
Product Series	Product Family	Tier	Major Series	SEER	Cooling Capacity	Variations	Open	Open	Voltage	Minor Series		
24=AC	A=RES AC	C=Comfort	A=Puron	4=14 SEER		A=Standard	0=Not Defined	0=Not Defined	3=208/230-1	0, 1, 2...		



This product has been designed and manufactured to meet Energy Star® criteria for energy efficiency when matched with appropriate coil components. However, proper refrigerant charge and proper air flow are critical to achieve rated capacity and efficiency. Installation of this product should follow all manufacturing refrigerant charging and air flow instructions. **Failure to confirm proper charge and air flow may reduce energy efficiency and shorten equipment life.**

STANDARD FEATURES

Features	Unit Size – Series						
	18–31	24–32	30–32	36–31	42–32	48–31	60–31
Puron Refrigerant	X	X	X	X	X	X	X
Maximum SEER Rating	15.5	16.0	16.0	16.0	16.0	15.0	14.5
Scroll Compressor	X	X	X	X	X	X	X
Louvered Coil Guard	X	X	X	X	X	X	X
Field Installed Filter Drier	X	X	X	X	X	X	X
Front Seating Service Valves	X	X	X	X	X	X	X
Internal Pressure Relief Valve	X	X	X	X	X	X	X
Internal Thermal Overload	X	X	X	X	X	X	X
Long Line capability	X	X	X	X	X	X	X
Low Ambient capability with Kit	X	X	X	X	X	X	X
Low Pressure (loss of charge) Switch	X	X	X	X	X	X	X
High Pressure Switch	X	X	X	X	X	X	X
Compressor Sound Blanket	X	X	X	X	X	X	X

X = Standard

24ACA4

PHYSICAL DATA

UNIT SIZE – SERIES	18–31	24–32	30–32	36–31	42–32	48–31	60–31
Operating Weight lb (kg)	197 (89.36)	184 (83.5)	177 (80.3)	225 (102.1)	228 (103.4)	270 (122.5)	337 (152.9)
Shipping Weight lb (kg)	225 (102.1)	223 (101.2)	218 (98.9)	259 (117.5)	266.5 (120.9)	303 (137.4)	372 (168.7)
Compressor Type	Scroll						
REFRIGERANT	Puron® (R-410A)						
Control	TXV (Puron® Hard Shutoff)						
Charge lb (kg)	5.7 (2.56)	5.5 (2.49)	5.8 (2.63)	7.25 (3.29)	9.5 (4.31)	11 (4.99)	13.9 (6.30)
COND FAN	Propeller Type, Direct Drive						
Air Discharge	Vertical						
Air Qty (CFM)	2235	3223	3223	3800	3810	3800	4050
Motor HP	1/12	1/12	1/12	1/5	1/5	1/5	1/4
Motor RPM	800	800	800	800	800	800	800
COND COIL							
Face Area (Sq ft.)	19.40	17.60	17.60	22.63	17.60	20.12	30.18
Fins per In.	25	25	25	25	25	20	20
Rows	1	1	1	1	1	2	2
Circuits	3	4	4	5	4	7	7
VALVE CONNECT. (In. ID)							
Vapor	5/8	5/8	3/4	3/4	7/8	7/8	7/8
Liquid	3/8						
REFRIGERANT TUBES (In. OD)							
Rated Vapor*	5/8		3/4		7/8		1–1/8
Liquid	3/8						

*Units are rated with 25 ft (7.6 m) of lineset length. See Vapor Line Sizing and Cooling Capacity Loss table when using other sizes and lengths of lineset.

VAPOR LINE SIZING AND COOLING CAPACITY LOSS

LONG LINE APPLICATION: An application is considered "Long line" when the total equivalent tubing length exceeds 80 ft. (24.38 m) or when there is more than 20 ft. (6.09 m) vertical separation between indoor and outdoor units. These applications require additional accessories and system modifications for reliable system operation. The maximum allowable total equivalent length is 250 ft. (76.2 m). The maximum vertical

separation is 200 ft. (60.96 m) when outdoor unit is above indoor unit, and 80 ft. (24.38 m) when the outdoor unit is below the indoor unit. Refer to Accessory Usage Guideline below for required accessories. See Longline Application Guideline for required piping and system modifications. Also, refer to the table below for the vapor tube diameters based on the total length to minimize the cooling capacity loss.

Unit Nominal Size (Btuh)	Maximum Liquid Line Diameters (In. OD)	Vapor Line Diameters (In. OD)	Cooling Capacity Loss (%) Total Equivalent Line Length ft. (m)									
			Standard Application		Long Line Application Requires Accessories							
			26–50 (7.9–15.2)	51–80 (15.5–24.4)	81–100 (24.7–30.5)	101–125 (30.8–38.1)	126–150 (38.4–45.7)	151–175 (46.0–53.3)	176–200 (53.6–61.0)	201–225 (61.3–68.6)	226–250 (68.9–76.2)	
18000 1 Stage Puron AC	3/8	1/2	1	2	3	4	6	7	8	9	10	
		5/8	0	0	1	1	1	2	2	3	3	
24000 1 Stage Puron AC	3/8	5/8	0	1	1	2	3	3	4	4	5	
		3/4	0	0	0	0	1	1	1	1	1	
30000 1 Stage Puron AC	3/8	7/8	0	0	0	0	0	0	0	0	0	
		5/8	1	2	3	3	4	5	6	7	8	
36000 1 Stage Puron AC	3/8	3/4	0	0	1	1	1	2	2	2	3	
		7/8	0	0	0	0	1	1	1	1	1	
42000 1 Stage Puron AC	3/8	5/8	1	2	4	5	6	7	9	10	11	
		3/4	0	0	1	1	2	2	3	3	4	
48000 1 Stage Puron AC	3/8	7/8	0	0	0	0	1	1	1	1	2	
		3/4	0	1	2	3	4	5	5	6	7	
60000 1 Stage Puron AC	3/8	1 1/8	0	0	0	0	0	0	0	0	0	
		7/8	0	0	1	1	2	2	2	3	3	
		3/4	1	2	4	5	6	7	9	10	11	
		7/8	0	1	2	2	3	4	4	5	5	
		1 1/8	0	0	0	1	1	1	1	1	1	

Applications in this area are long line. Accessories are required as shown recommended on Long Line Application Guidelines

Applications in this area may have height restrictions that limit allowable total equivalent length, when outdoor unit is below indoor unit. See Long Line Application Guidelines

24ACA4

ACCESSORIES

ORDER NUMBER	DESCRIPTION	18-31	24-32	30-32	36-31	42-32	48-31	60-31
KAACH1201AAA	CRANKCASE HTR					X	X	X
KAACH1401AAA	CRANKCASE HTR	X	X	X	X			
KSACY0101AAA	CYCLE PROTECTOR	X	X	X	X	X	X	X
KAFT0101AAA	FREEZE THERMOSTAT	X	X	X	X	X	X	X
KSAHS1701AAA	HARD START (CAP / RELAY)	X	X	X	X	X	X	X
KSALA0301410*	LOW AMBIENT PSW	X	X	X	X	X	X	X
HC32GE234	MOTOR FAN BALL BEARING	X						
HC34GE239	MOTOR FAN BALL BEARING		X	X				
HC38GE228	MOTOR FAN BALL BEARING					X		
HC40GE226	MOTOR FAN BALL BEARING				X			
HC40GE228	MOTOR FAN BALL BEARING						X	X
KSALA0601AAA*	MOTORMASTER 230V	X	X	X	X	X	X	X
KAALS0201LLS	SOLENOID VALVE	X	X	X	X	X	X	X
KAACS0201PTC	START ASSIST PTC	X	X	X	X	X	X	X
KSASF0101AAA	SUPPORT FEET	X	X	X	X	X	X	X
KAATD0101TDR	TIME DELAY RELAY	X	X	X	X	X	X	X
KSATX0201PUR	TXV PURON HSO	X	X	X				
KSATX0301PUR	TXV PURON HSO				X	X		
KSATX0401PUR	TXV PURON HSO						X	
KSATX0501PUR	TXV PURON HSO							X
KAAWS0101AAA	WINTER START	X	X	X	X	X	X	X

x = Accessory

* See Accessory Usage Guideline for other accessories needed for low ambient cooling applications.

THERMOSTATS

THERMOSTAT / SUBBASE PKG.	DESCRIPTION
TSTATCCPRH01-B	Thermostat Control – Programmable / Non-Programmable Thermostat with Humidity control
TSTATCCPAC01-B	Thermostat – Auto Changeover, 7-Day Programmable, °F/°C, 1-Stage Heat, 1-Stage Cool
TSTATCCNAC01-C	Thermostat – Auto Changeover, Non-Programmable, °F/°C, 1-Stage Heat, 1-Stage Cool
TSTATCCBAC01-B	Builder's Thermostat – Manual Changeover, Non-Programmable, °F/°C, 1-Stage Heat, 1-Stage Cool
TSTATCCSEN01-B	Outdoor Air Temperature Sensor
TSTATXBPP01	Backplate for Builder's Thermostat
TSTATXNBP01	Backplate for Non-Programmable Thermostat
TSTATXPBP01	Backplate for Programmable Thermostat
TSTATXCNV10	Thermostat Conversion Kit (4 to 5 wires) – 10 Pack
TP-PRH-01	Programmable Thermostat
TP-NRH-01	Non-programmable Thermostat
TC-PAC-01	Comfort Series Programmable AC Stat
TC-NAC-01	Comfort Series Non-programmable AC Stat

ACCESSORY USAGE GUIDELINE

ACCESSORY	REQUIRED FOR LOW-AMBIENT COOLING APPLICATIONS (Below 55°F/12.8°C)	REQUIRED FOR LONG LINE APPLICATIONS* (Over 80 ft./24.38 m)	REQUIRED FOR SEA COAST APPLICATIONS (Within 2 miles/3.22 km)
Ball Bearing Fan Motor	Yes†	No	No
Compressor Start Assist Capacitor and Relay	Yes	Yes	No
Crankcase Heater	Yes	Yes	No
Evaporator Freeze Thermostat	Yes	No	No
Hard Shut-Off TXV	Yes	Yes	Yes
Liquid Line Solenoid Valve	No	No	No
Motor Master® Control or Low-ambient Pressure Switch	Yes	No	No
Support Feet	Recommended	No	Recommended
Winter Start Control	Yes	No	No

* For tubing line sets between 80 and 200 ft. (24.38 and 60.96 m) and/or 20 ft. (6.09 m) vertical differential, refer to Residential Split-System Longline Application Guideline.

† Required for Low-Ambient Controller (full modulation feature) MotorMaster® Control.

Accessory Description and Usage (Listed Alphabetically)

1. Ball-Bearing Fan Motor

A fan motor with ball bearings which permits speed reduction while maintaining bearing lubrication.

Usage Guideline:

Required on all units when MotorMaster® —

2. Compressor Start Assist - Capacitor and Relay

Start capacitor and relay gives a "hard" boost to compressor motor at each start up.

Usage Guideline:

Required for reciprocating compressors in the following applications:

- Long line
- Low ambient cooling
- Hard shut off expansion valve on indoor coil
- Liquid line solenoid on indoor coil

Required for single-phase scroll compressors in the following applications:

- Long line
- Low ambient cooling

Suggested for all compressors in areas with a history of low voltage problems.

3. Compressor Start Assist — PTC Type

Solid state electrical device which gives a "soft" boost to the compressor at each start-up.

Usage Guideline:

Suggested in installations with marginal power supply.

4. Crankcase Heater

An electric resistance heater which mounts to the base of the compressor to keep the lubricant warm during off cycles. Improves compressor lubrication on restart and minimizes the chance of liquid slugging.

Usage Guideline:

- Required in low ambient cooling applications.
- Required in long line applications.
- Suggested in all commercial applications.

5. Cycle Protector

The cycle protector is designed to prevent compressor short cycling. This control provides an approximate 5-minute delay after power to the compressor has been interrupted for any reason, including power outage, protector control trip, thermostat jiggling, or normal cycling.

6. Evaporator Freeze Thermostat

An SPST temperature-actuated switch that stops unit operation when evaporator reaches freeze-up conditions.

Usage Guideline:

Required when low ambient kit has been added.

7. Low-Ambient Pressure Switch Kit

A long life pressure switch which is mounted to outdoor unit service valve. It is designed to cycle the outdoor fan motor in order to maintain head pressure within normal operating limits (approximately 100 psig/689.5 KpA to 225 psig/1551.3 KpA). The control will maintain working head pressure at low-ambient temperatures down to 0°F when properly installed.

Usage Guideline:

A Low-Ambient Pressure Switch or MotorMaster® Low-Ambient Controller must be used when cooling operation is used at outdoor temperatures below 55°F (12.8°C).

8. MotorMaster® Low-Ambient Controller

A fan-speed control device activated by a temperature sensor, designed to control condenser fan motor speed in response to the saturated, condensing temperature during operation in cooling mode only. For outdoor temperatures down to -20°F (-28.9°C), it maintains condensing temperature at 100°F ±10°F (37.8°C ± -12°C).

Usage Guideline:

A MotorMaster® Low Ambient Controller or Low-Ambient Pressure Switch must be used when cooling operation is used at outdoor temperatures below 55°F (12.8°C).

Suggested for all commercial applications.

9. Outdoor Air Temperature Sensor

Designed for use with Carrier Thermostats listed in this publication. This device enables the thermostat to display the outdoor temperature. This device also

is required to enable special thermostat features such as auxiliary heat lock out.

Usage Guideline:

Suggested for all Carrier thermostats listed in this publication.

Accessory Description and Usage (Listed Alphabetically) (Continued)

10. Sound Hood

Wraparound sound reducing cover for the compressor. Reduces the sound level by about 2 dBA.

Usage Guideline:

Suggested when unit is installed closer than 15 ft (4.57 m) to quiet areas, bedrooms, etc.

Suggested when unit is installed between two houses less than 10 ft (3.05 m) apart.

11. Support Feet

Four stick-on plastic feet that raise the unit 4 in. (101.6 mm) above the mounting pad. This allows sand, dirt, and other debris to be flushed from the unit base, minimizing corrosion.

Usage Guideline:

Suggested in the following applications:

Coastal installations.

Windy areas or where debris is normally circulating.

Rooftop installations.

For improved sound ratings.

12. Thermostatic Expansion Valve (TXV)

A modulating flow-control valve which meters refrigerant liquid flow rate into the evaporator in response to the superheat of the refrigerant gas leaving the evaporator.

Kit includes valve, adapter tubes, and external equalizer tube. Hard shut off types are available.

NOTE: When using a hard shut off TXV with single phase reciprocating compressors, a Compressor Start Assist Capacitor and Relay is required.

Usage Guideline:

Required to achieve ARI ratings in certain equipment combinations. Refer to combination ratings.

Hard shut off TXV or LLS required in air conditioner long line applications.

Required for use on all zoning systems.

13. Time-Delay Relay

An SPST delay relay which briefly continues operation of indoor blower motor to provide additional cooling after the compressor cycles off.

NOTE: Most indoor unit controls include this feature. For those that do not, use the guideline below.

Usage Guideline:

For improved efficiency ratings for certain combinations of indoor and outdoor units. Refer to ARI Unitary Directory.

14. Winter Start Control

This control is designed to alleviate nuisance opening of the low-pressure switch by bypassing it for the first 3 minutes of operation.

ELECTRICAL DATA

UNIT SIZE – SERIES	V/PH	OPER VOLTS*		COMPR		FAN	MCA	MIN WIRE SIZE†	MIN WIRE SIZE†	MAX LENGTH ft. (m)‡	MAX LENGTH ft. (m)‡	MAX FUSE** or CKT BRK AMPS
		MAX	MIN	LRA	RLA	FLA		60° C	75° C	60° C	75° C	
18–31	208/230/1	253	197	48.0	9.0	0.5	11.7	14	14	67 (20.4)	64 (19.5)	15
24–32				58.3	13.5	0.5	17.3	14	14	46 (14.0)	43 (13.1)	30
30–32				73.0	14.1	0.5	18.1	14	14	44 (13.4)	41 (12.5)	30
36–31				79.0	16.7	1.2	22.0	12	12	57 (17.4)	54 (16.5)	35
42–32				112.0	17.9	1.2	23.6	12	10	53 (16.2)	50 (15.2)	40
48–31				117.0	21.8	1.2	28.4	10	10	70 (21.3)	67 (20.4)	40
60–31				134.0	26.4	1.2	34.2	8	8	91 (27.7)	86 (26.2)	50

* Permissible limits of the voltage range at which the unit will operate satisfactorily

† If wire is applied at ambient greater than 30° C, consult table 310–16 of the NEC (ANSI/NFPA 70). The ampacity of non-metallic-sheathed cable (NM), trade name ROMEX, shall be that of 60° C conditions, per the NEC (ANSI/NFPA 70) Article 336–26. If other than uncoated (no-plated), 60 or 75° C insulation, copper wire (solid wire for 10 AWG or smaller, stranded wire for larger than 10 AWG) is used, consult applicable tables of the NEC (ANSI/NFPA 70).

‡ Length shown is as measured 1 way along wire path between unit and service panel for voltage drop not to exceed 2%.

** Time-Delay fuse.

FLA – Full Load Amps

LRA – Locked Rotor Amps

MCA – Minimum Circuit Amps

RLA – Rated Load Amps

NOTE: Control circuit is 24–V on all units and requires external power source. Copper wire must be used from service disconnect to unit.

All motors/compressors contain internal overload protection.

24ACA4

SOUND POWER

UNIT SIZE – VOLTAGE, SERIES	STANDARD RATING (dBA)	TYPICAL OCTAVE BAND SPECTRUM (dB, without tone adjustment)						
		125	250	500	1000	2000	4000	8000
18–31	74	53.0	60.5	65.0	67.0	63.5	60.0	52.0
24–32	76	50.0	59.5	67.0	67.0	64.5	60.0	54.0
30–32	76	54.0	62.5	69.5	70.0	67.0	62.0	55.0
36–31	74	54.5	62.0	66.0	69.5	66.5	65.0	60.0
42–32	76	58.0	65.0	68.0	69.0	65.5	61.0	54.0
48–31	74	59.0	63.5	65.5	69.0	63.5	59.0	53.0
60–31	74	55.5	64.0	67.0	69.0	65.0	60.0	54.5

NOTE: Tested in accordance with ARI Standard 270–95. (Not listed with ARI).

CHARGING SUBCOOLING (TXV-TYPE EXPANSION DEVICE)

UNIT SIZE – SERIES	REQUIRED SUBCOOLING °F (°C)
18–31	10 (5.6)
24–32	10 (5.6)
30–32	11 (6.1)
36–31	10 (5.6)
42–32	12 (6.7)
48–31	9 (5.0)
60–31	9 (5.0)

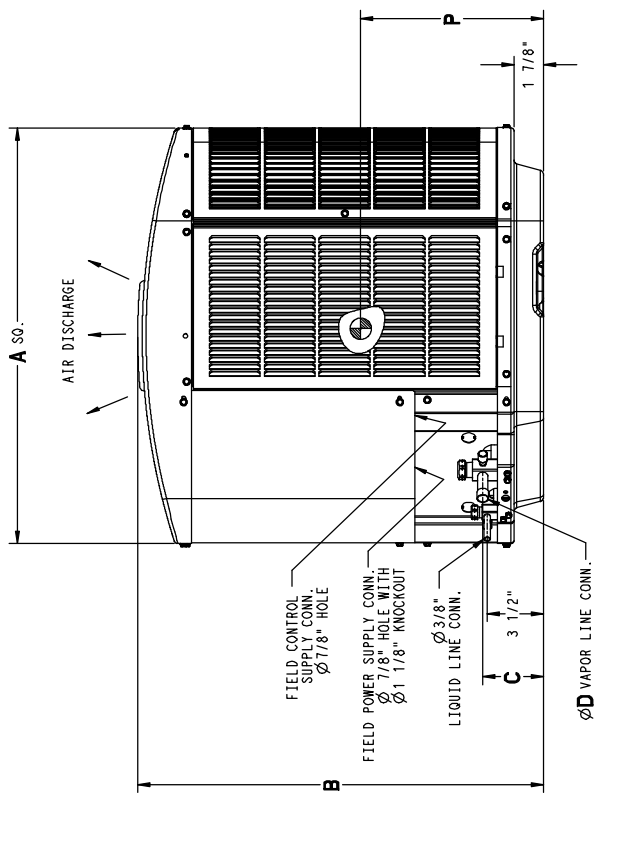
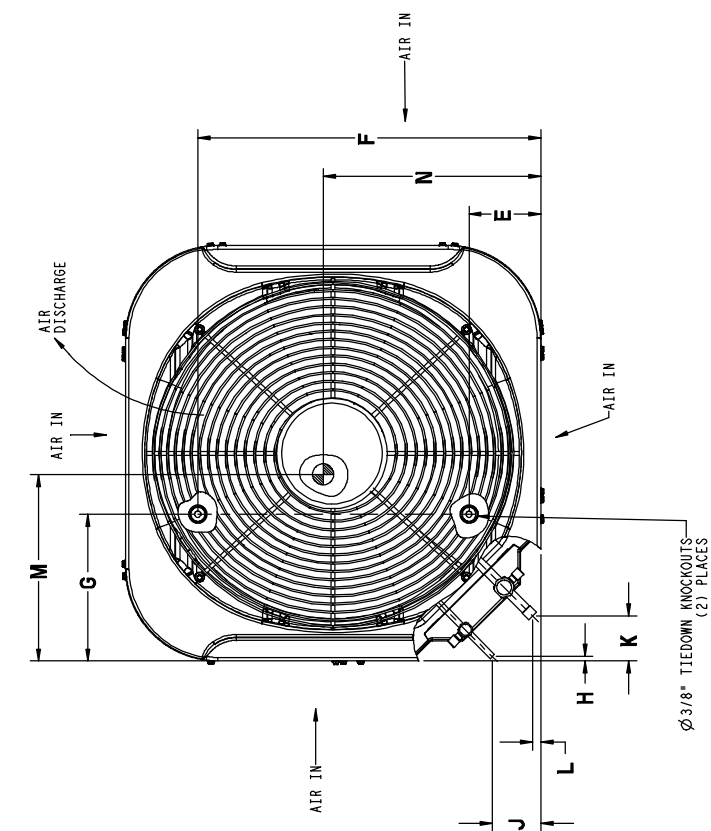
24ACA4

DIMENSIONS

UNIT	SERIES	ELECTRICAL CHARACTERISTICS	A	B	C	D	E	F	G	H	J	K	L	M	N	P	OPERATING WEIGHT	SHIPPING WEIGHT	SHIPPING DIMENSIONS (L x W x H)
24ACA418	1	X 0 0 0	31 3/16*	35 3/4"	3 3/4"	5/8"	6 9/16"	24 11/16"	9 1/8"	5/16"	3"	2 13/16"	1/2"	16 1/4"	16"	16 5/8"	197#	225#	32 3/8" X 35 1/2" X 39 3/8"
24ACA424	2	X 0 0 0	35"	28 15/16"	3 3/4"	5/8"	6 9/16"	28 7/16"	9 1/8"	5/16"	3"	2 13/16"	1/2"	17 1/2"	15 3/4"	14 1/2"	184#	223#	36 1/8" X 39 5/16" X 32 9/16"
24ACA430	2	X 0 0 0	35"	28 15/16"	3 3/4"	3/4"	6 9/16"	28 7/16"	9 1/8"	5/16"	3"	2 13/16"	1/2"	16 1/4"	15 1/2"	14 1/2"	177#	218#	36 1/8" X 39 5/16" X 32 9/16"
24ACA436	1	X 0 0 0	35"	35 3/4"	3 3/4"	3/4"	6 9/16"	28 7/16"	9 1/8"	5/16"	3"	2 13/16"	1/2"	18 1/4"	18 1/2"	17 1/2"	225#	259#	36 1/8" X 39 5/16" X 39 3/8"
24ACA442	2	X 0 0 0	35"	28 15/16"	3 7/8"	7/8"	6 9/16"	28 7/16"	9 1/8"	5/16"	3"	2 15/16"	5/8"	15 1/4"	16 7/8"	13 1/4"	228#	267#	36 1/8" X 39 5/16" X 32 9/16"
24ACA448	1	X 0 0 0	35"	32 5/16"	3 7/8"	7/8"	6 9/16"	28 7/16"	9 1/8"	5/16"	3"	2 15/16"	5/8"	17 3/4"	18 3/4"	15 1/2"	270#	303#	36 1/8" X 39 5/16" X 35 15/16"
24ACA460	1	X 0 0 0	35"	45 15/16"	3 7/8"	7/8"	6 9/16"	28 7/16"	9 1/8"	5/16"	3"	2 15/16"	5/8"	17 7/8"	18 5/8"	20 1/4"	337#	372#	36 1/8" X 39 5/16" X 49 9/16"

X = YES
O = NO

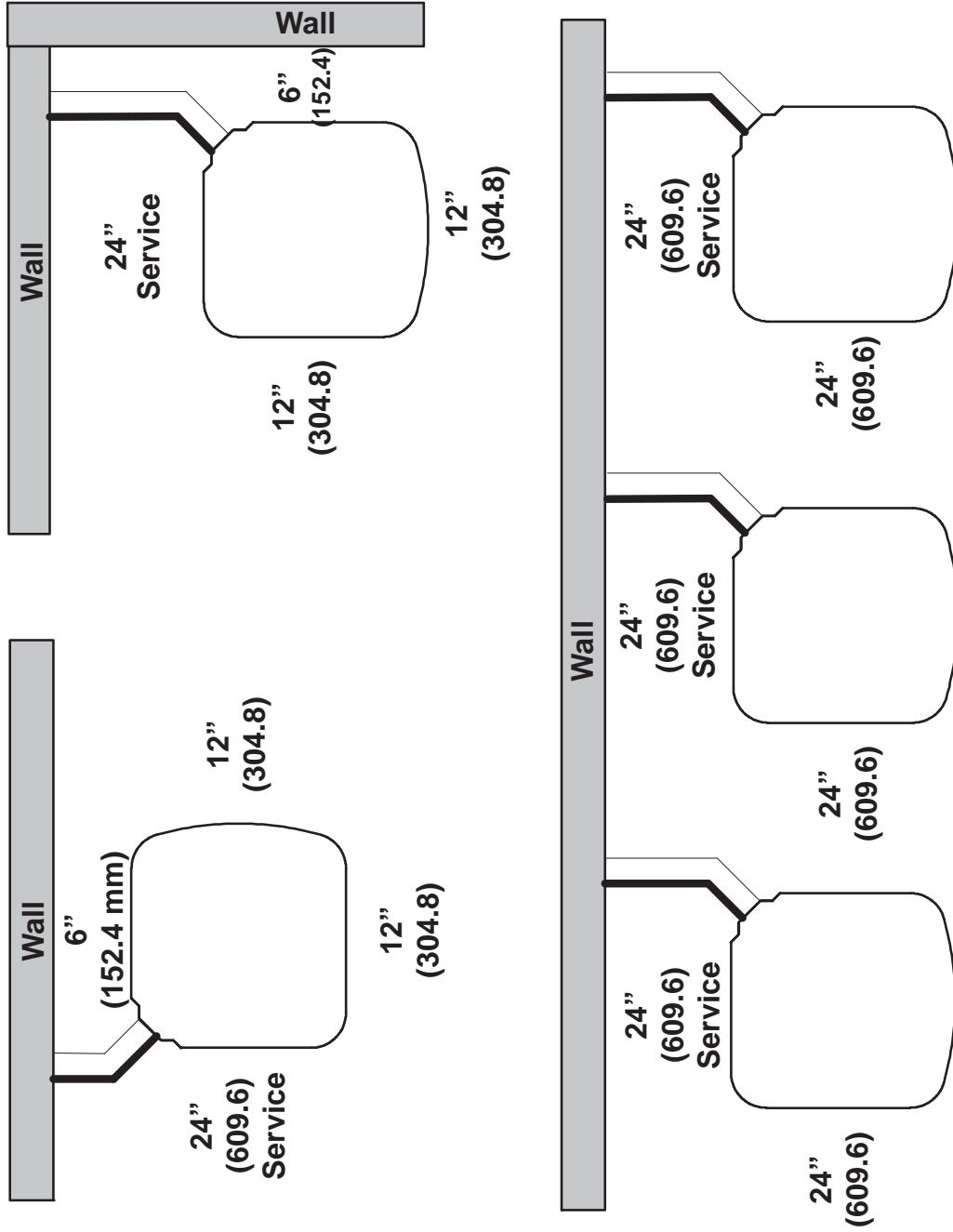
- NOTES:
1. ALLOW 30" CLEARANCE TO SERVICE SIDE OF UNIT, 48" ABOVE UNIT, 6" ON ONE SIDE, 12" ON REMAINING SIDE, AND 24" BETWEEN UNITS FOR PROPER AIRFLOW.
 2. MINIMUM OUTDOOR OPERATING AMBIENT IN COOLING MODE IS 55° F., MAX. 125° F.
 3. SERIES DESIGNATION IS THE 13TH POSITION OF THE UNIT MODEL NUMBER.
 4. CENTER OF GRAVITY



UNIT SIZE	MINIMUM MOUNTING PAD DIMENSIONS
-	26" X 26"
18	31 1/2" X 31 1/2"
24, 30, 36, 42, 48, 60	35" X 35"

CLEARANCES

Clearances (various examples)



Note: Numbers in () = mm

COMBINATION RATINGS

24ACA4

Unit Size – Series	Indoor Model	Total Cap. BTUH	Factory Supplied Enhancement	SEER		EER	Furnace Model	
				Standard Rating	TDR†			
18-31	*CAP**2414A**	18,000	TXV		14.00	11.50		
	CAP**1814A**	17,600	TDR&TXV	15.00		12.50	58CV(A,X)070-12	
	CAP**1814A**	18,000	TDR&TXV	15.25		12.75	58PH*045-08	
	CAP**1814A**	17,800	TXV		13.50	11.20		
	CAP**2414A**	17,900	TDR&TXV	15.50		13.00	58CV(A,X)070-12	
	CAP**2414A**	18,200	TDR&TXV	15.50		13.00	58PH*045-08	
	CAP**2417A**	17,900	TDR&TXV	15.50		13.00	58CV(A,X)090-16	
	CAP**2417A**	17,900	TDR&TXV	15.50		13.00	58MVB060-14	
	CAP**2417A**	17,900	TDR&TXV	15.50		13.00	58UVB060-14	
	CNPF*2418A**	18,000	TXV		14.00	11.50		
	CNPH*2417A**	17,900	TDR&TXV	15.50		13.00	58CV(A,X)070-12	
	CNPH*2417A**	17,900	TDR&TXV	15.50		13.00	58CV(A,X)090-16	
	CNPH*2417A**	17,900	TDR&TXV	15.50		13.00	58MVB040-14	
	CNPH*2417A**	17,900	TDR&TXV	15.50		13.00	58MVB060-14	
	CNPH*2417A**	17,900	TDR&TXV	15.50		13.00	58MVB080-14	
	CNPH*2417A**	18,200	TDR&TXV	15.50		13.00	58PH*045-08	
	CNPH*2417A**	18,000	TXV		14.00	11.50		
	CNPV*1814A**	17,600	TDR&TXV	15.00		12.50	58CV(A,X)070-12	
	CNPV*1814A**	18,000	TDR&TXV	15.25		12.75	58PH*045-08	
	CNPV*1814A**	17,800	TXV		13.50	11.20		
	CNPV*2414A**	17,900	TDR&TXV	15.50		13.00	58CV(A,X)070-12	
	CNPV*2414A**	18,200	TDR&TXV	15.50		13.00	58PH*045-08	
	CNPV*2414A**	18,000	TXV		14.00	11.50		
	CNPV*2417A**	17,900	TDR&TXV	15.50		13.00	58CV(A,X)090-16	
	CNPV*2417A**	17,900	TDR&TXV	15.50		13.00	58MVB060-14	
	CNPV*2417A**	17,900	TDR&TXV	15.50		13.00	58UVB060-14	
	CNPV*2417A**	18,000	TXV		14.00	11.50		
	CSPH*2412A**	17,900	TDR&TXV	15.50		13.00	58CV(A,X)070-12	
	CSPH*2412A**	17,900	TDR&TXV	15.50		13.00	58CV(A,X)090-16	
	CSPH*2412A**	17,900	TDR&TXV	15.50		13.00	58MVB040-14	
	CSPH*2412A**	17,900	TDR&TXV	15.50		13.00	58MVB060-14	
	CSPH*2412A**	17,900	TDR&TXV	15.50		13.00	58MVB080-14	
	CSPH*2412A**	18,200	TDR&TXV	15.50		13.00	58PH*045-08	
	CSPH*2412A**	18,000	TXV		14.00	12.00		
	FE4ANF002	18,200	TDR&TXV	16.00		13.20		
	FF1ENP018	17,800	TDR&TXV	13.50		11.20		
	FF1ENP024	18,000	TDR&TXV	13.50		11.20		
	FV4BNF002	18,200	TDR&TXV	16.00		13.20		
	FX4CNF018	18,000	TDR&TXV	15.50		13.00		
	FX4CNF024	18,300	TDR&TXV	15.50		13.00		
	FY4ANF018	17,800	TDR&TXV	13.50		11.20		
	FY4ANF024	17,900	TDR&TXV	13.50		11.20		
	24-32	*CAP**2414A**	23,200	TXV		14.00	11.70	
		CAP**2414A**	23,000	TDR&TXV	15.50		13.00	58CV(A,X)070-12
		CAP**2414A**	23,200	TDR&TXV	15.25		12.75	58PH*045-08
CAP**2417A**		23,000	TDR&TXV	15.50		13.00	58CV(A,X)090-16	
CAP**2417A**		23,000	TDR&TXV	15.50		13.00	58MV(B,C)060-14	
CAP**2417A**		23,000	TDR&TXV	15.50		13.00	58UVB060-14	
CAP**2417A**		23,200	TXV		14.00	11.70		
CAP**3014A**		23,200	TDR&TXV	15.50		13.00	58CV(A,X)070-12	
CAP**3014A**		23,400	TDR&TXV	15.50		13.00	58PH*045-08	
CAP**3014A**		23,400	TXV		14.00	12.00		
CAP**3017A**		23,200	TDR&TXV	16.00		13.20	58CV(A,X)090-16	
CAP**3017A**		23,200	TDR&TXV	15.50		13.00	58MV(B,C)060-14	
CAP**3017A**		23,200	TDR&TXV	15.50		13.00	58UVB060-14	
CAP**3017A**		23,400	TXV		14.00	12.00		
CNPF*2418A**		23,200	TXV		14.00	11.70		
CNPH*2417A**		22,800	TDR&TXV	15.50		12.50	58CV(A,X)070-12	
CNPH*2417A**		23,000	TDR&TXV	15.50		13.00	58CV(A,X)090-16	
CNPH*2417A**		23,000	TDR&TXV	15.50		12.50	58CV(A,X)110-20	
CNPH*2417A**		23,000	TDR&TXV	15.50		13.00	58CV(A,X)135-22	
CNPH*2417A**		23,000	TDR&TXV	15.50		13.00	58CV(A,X)155-22	
CNPH*2417A**		23,000	TDR&TXV	15.50		13.00	58MV(B,C)060-14	

See notes on page 18

COMBINATION RATINGS (CONTINUED)

Unit Size – Series	Indoor Model	Total Cap. BTUH	Factory Supplied Enhancement	SEER		EER	Furnace Model
				Standard Rating	TDR†		
	CNPH*2417A**	23,000	TDR&TXV	15.50		12.50	58MV(B,C)080-14
	CNPH*2417A**	22,800	TDR&TXV	15.50		13.00	58MV(B,C)080-20
	CNPH*2417A**	23,000	TDR&TXV	15.50		13.00	58MV(B,C)100-20
	CNPH*2417A**	22,800	TDR&TXV	15.00		12.50	58MV(B,C)120-20
	CNPH*2417A**	23,000	TDR&TXV	15.50		12.50	58MVB040-14
	CNPH*2417A**	23,000	TDR&TXV	15.25		12.75	58PH*045-08
	CNPH*2417A**	23,200	TXV		14.00	11.70	
	CNPH*3017A**	23,200	TDR&TXV	15.50		13.00	58CV(A,X)070-12
	CNPH*3017A**	23,200	TDR&TXV	16.00		13.20	58CV(A,X)090-16
	CNPH*3017A**	23,200	TDR&TXV	15.50		13.00	58CV(A,X)110-20
	CNPH*3017A**	23,400	TDR&TXV	15.50		13.00	58CV(A,X)135-22
	CNPH*3017A**	23,400	TDR&TXV	16.00		13.20	58CV(A,X)155-22
	CNPH*3017A**	23,200	TDR&TXV	15.50		13.00	58MV(B,C)060-14
	CNPH*3017A**	23,200	TDR&TXV	15.50		13.00	58MV(B,C)080-14
	CNPH*3017A**	23,000	TDR&TXV	15.50		13.00	58MV(B,C)080-20
	CNPH*3017A**	23,200	TDR&TXV	15.50		13.00	58MV(B,C)100-20
	CNPH*3017A**	23,200	TDR&TXV	15.50		13.00	58MV(B,C)120-20
	CNPH*3017A**	23,200	TDR&TXV	15.50		13.00	58MVB040-14
	CNPH*3017A**	23,600	TDR&TXV	15.25		13.00	58PH*045-08
	CNPH*3017A**	23,400	TXV		14.00	12.00	
	CNPV*2414A**	22,800	TDR&TXV	15.50		12.50	58CV(A,X)070-12
	CNPV*2414A**	23,000	TDR&TXV	15.25		12.75	58PH*045-08
	CNPV*2414A**	23,200	TXV		14.00	11.70	
	CNPV*2417A**	23,000	TDR&TXV	15.50		13.00	58CV(A,X)090-16
	CNPV*2417A**	23,000	TDR&TXV	15.50		13.00	58MV(B,C)060-14
	CNPV*2417A**	23,000	TDR&TXV	15.50		13.00	58UVB060-14
	CNPV*2417A**	23,200	TXV		14.00	11.70	
	CNPV*3014A**	23,200	TDR&TXV	15.50		13.00	58CV(A,X)070-12
	CNPV*3014A**	23,400	TDR&TXV	15.50		13.00	58PH*045-08
	CNPV*3014A**	23,400	TXV		14.00	12.00	
	CNPV*3017A**	23,200	TDR&TXV	16.00		13.20	58CV(A,X)090-16
	CNPV*3017A**	23,200	TDR&TXV	15.50		13.00	58MV(B,C)060-14
	CNPV*3017A**	23,200	TDR&TXV	15.50		13.00	58UVB060-14
	CNPV*3017A**	23,400	TXV		14.00	12.00	
	CSPH*2412A**	23,200	TDR&TXV	15.50		13.00	58CV(A,X)070-12
	CSPH*2412A**	23,200	TDR&TXV	15.50		13.00	58CV(A,X)090-16
	CSPH*2412A**	23,200	TDR&TXV	15.50		13.00	58CV(A,X)110-20
	CSPH*2412A**	23,200	TDR&TXV	15.50		13.00	58CV(A,X)135-22
	CSPH*2412A**	23,200	TDR&TXV	15.50		13.00	58CV(A,X)155-22
	CSPH*2412A**	23,200	TDR&TXV	15.50		13.00	58MV(B,C)060-14
	CSPH*2412A**	23,200	TDR&TXV	15.50		13.00	58MV(B,C)080-14
	CSPH*2412A**	23,000	TDR&TXV	15.50		13.00	58MV(B,C)080-20
	CSPH*2412A**	23,200	TDR&TXV	15.50		13.00	58MV(B,C)100-20
	CSPH*2412A**	23,200	TDR&TXV	15.50		13.00	58MV(B,C)120-20
	CSPH*2412A**	23,200	TDR&TXV	15.50		13.00	58MVB040-14
	CSPH*2412A**	23,200	TDR&TXV	15.50		13.00	58PH*045-08
	CSPH*2412A**	23,400	TXV		14.00	12.00	
	CSPH*3012A**	23,200	TDR&TXV	15.50		13.00	58CV(A,X)070-12
	CSPH*3012A**	23,400	TDR&TXV	16.00		13.20	58CV(A,X)090-16
	CSPH*3012A**	23,400	TDR&TXV	15.50		13.00	58CV(A,X)110-20
	CSPH*3012A**	23,400	TDR&TXV	15.50		13.00	58CV(A,X)135-22
	CSPH*3012A**	23,400	TDR&TXV	15.50		13.00	58CV(A,X)155-22
	CSPH*3012A**	23,400	TDR&TXV	15.50		13.00	58MV(B,C)060-14
	CSPH*3012A**	23,200	TDR&TXV	15.50		13.00	58MV(B,C)080-14
	CSPH*3012A**	23,000	TDR&TXV	15.50		13.00	58MV(B,C)080-20
	CSPH*3012A**	23,400	TDR&TXV	15.50		13.00	58MV(B,C)100-20
	CSPH*3012A**	23,200	TDR&TXV	15.50		13.00	58MV(B,C)120-20
	CSPH*3012A**	23,400	TDR&TXV	15.50		13.00	58MVB040-14
	CSPH*3012A**	23,600	TDR&TXV	15.50		13.00	58PH*045-08
	CSPH*3012A**	23,600	TXV		14.00	12.00	
	FE4AN(B,F)003	23,600	TDR&TXV	16.00		13.20	
	FE4ANF002	23,400	TDR&TXV	16.00		13.20	
	FE5ANB004	24,200	TDR&TXV	16.00		13.20	
	FF1ENP024	23,000	TDR&TXV	13.50		11.70	
	FF1ENP030	23,000	TDR&TXV	13.50		11.70	
	FV4BN(B,F)003	23,600	TDR&TXV	16.00		13.20	
	FV4BNF002	23,400	TDR&TXV	16.00		13.20	
	FX4CNF024	23,400	TDR&TXV	15.00		12.50	
	FX4CNF030	23,600	TDR&TXV	15.50		13.00	
	FY4ANF024	23,000	TDR&TXV	14.00		11.70	
	FY4ANF030	23,200	TDR&TXV	14.00		12.00	

24-32

24ACA4

See notes on page 18

COMBINATION RATINGS (CONTINUED)

24ACA4

Unit Size – Series	Indoor Model	Total Cap. BTUH	Factory Supplied Enhancement	SEER		EER	Furnace Model
				Standard Rating	TDR†		
30-32	*CAP**3014A**	29,000	TXV		14.00	11.70	
	CAP**3014A**	28,800	TDR&TXV	15.00		12.50	58CV(A,X)070-12
	CAP**3017A**	28,800	TDR&TXV	15.50		12.50	58CV(A,X)090-16
	CAP**3017A**	28,800	TDR&TXV	15.00		12.50	58MV(B,C)060-14
	CAP**3017A**	29,000	TDR&TXV	15.00		12.50	58PH*070-16
	CAP**3017A**	28,800	TDR&TXV	15.00		12.50	58UVB060-14
	CAP**3017A**	29,000	TXV		14.00	11.70	
	CAP**3614A**	28,800	TDR&TXV	15.00		12.50	58CV(A,X)070-12
	CAP**3614A**	28,200	TXV		14.00	11.70	
	CAP**3617A**	29,000	TDR&TXV	15.50		13.00	58CV(A,X)090-16
	CAP**3617A**	28,800	TDR&TXV	15.00		12.50	58MV(B,C)060-14
	CAP**3617A**	29,200	TDR&TXV	15.00		12.50	58PH*070-16
	CAP**3617A**	28,800	TDR&TXV	15.00		12.50	58UVB060-14
	CAP**3617A**	29,200	TXV		14.00	11.70	
	CAP**3621A**	29,000	TDR&TXV	15.50		13.00	58CV(A,X)110-20
	CAP**3621A**	28,800	TDR&TXV	15.50		12.50	58MV(B,C)080-14
	CAP**3621A**	29,000	TDR&TXV	15.50		12.50	58MV(B,C)080-20
	CAP**3621A**	28,800	TDR&TXV	15.50		12.50	58MV(B,C)100-20
	CAP**3621A**	29,400	TDR&TXV	15.50		13.00	58PH*090-16
	CAP**3621A**	28,800	TDR&TXV	15.50		12.50	58UVB080-14
	CAP**3621A**	29,000	TDR&TXV	15.50		12.50	58UVB080-20
	CAP**3621A**	28,800	TDR&TXV	15.50		12.50	58UVB100-20
	CAP**3621A**	29,200	TXV		14.00	11.70	
	CNPF*3618A**	29,000	TXV		14.00	11.70	
	CNPH*3017A**	28,800	TDR&TXV	15.00		12.50	58CV(A,X)070-12
	CNPH*3017A**	28,800	TDR&TXV	15.50		12.50	58CV(A,X)090-16
	CNPH*3017A**	29,000	TDR&TXV	15.50		12.50	58CV(A,X)110-20
	CNPH*3017A**	29,000	TDR&TXV	15.00		12.50	58CV(A,X)135-22
	CNPH*3017A**	29,000	TDR&TXV	15.50		13.00	58CV(A,X)155-22
	CNPH*3017A**	28,800	TDR&TXV	15.00		12.50	58MV(B,C)060-14
	CNPH*3017A**	28,800	TDR&TXV	15.00		12.50	58MV(B,C)080-14
	CNPH*3017A**	28,800	TDR&TXV	15.00		12.50	58MV(B,C)080-20
	CNPH*3017A**	28,600	TDR&TXV	15.00		12.50	58MV(B,C)100-20
	CNPH*3017A**	28,800	TDR&TXV	15.00		12.50	58MV(B,C)120-20
	CNPH*3017A**	28,800	TDR&TXV	15.00		12.50	58MVB040-14
	CNPH*3017A**	29,000	TDR&TXV	15.00		12.50	58PH*070-16
	CNPH*3017A**	29,000	TDR&TXV	15.25		12.50	58PH*090-16
	CNPH*3017A**	29,000	TXV		14.00	11.70	
	CNPH*3617A**	28,800	TDR&TXV	15.00		12.50	58CV(A,X)070-12
	CNPH*3617A**	28,800	TDR&TXV	15.50		12.50	58CV(A,X)090-16
	CNPH*3617A**	29,000	TDR&TXV	15.50		12.50	58CV(A,X)110-20
	CNPH*3617A**	29,000	TDR&TXV	15.50		12.50	58CV(A,X)135-22
	CNPH*3617A**	29,000	TDR&TXV	15.50		13.00	58CV(A,X)155-22
	CNPH*3617A**	28,800	TDR&TXV	15.00		12.50	58MV(B,C)060-14
	CNPH*3617A**	28,800	TDR&TXV	15.00		12.50	58MV(B,C)080-14
	CNPH*3617A**	28,800	TDR&TXV	15.00		12.50	58MV(B,C)080-20
	CNPH*3617A**	28,600	TDR&TXV	15.00		12.50	58MV(B,C)100-20
	CNPH*3617A**	28,800	TDR&TXV	15.00		12.50	58MV(B,C)120-20
	CNPH*3617A**	28,800	TDR&TXV	15.00		12.50	58MVB040-14
	CNPH*3617A**	29,000	TDR&TXV	15.00		12.50	58PH*070-16
CNPH*3617A**	29,000	TDR&TXV	15.25		12.50	58PH*090-16	
CNPH*3617A**	29,000	TXV		14.00	11.70		
CNPV*3014A**	28,800	TDR&TXV	15.00		12.50	58CV(A,X)070-12	
CNPV*3014A**	29,000	TXV		14.00	11.70		
CNPV*3017A**	28,800	TDR&TXV	15.50		12.50	58CV(A,X)090-16	
CNPV*3017A**	28,800	TDR&TXV	15.00		12.50	58MV(B,C)060-14	
CNPV*3017A**	29,000	TDR&TXV	15.00		12.50	58PH*070-16	
CNPV*3017A**	28,800	TDR&TXV	15.00		12.50	58UVB060-14	
CNPV*3017A**	29,000	TXV		14.00	11.70		
CNPV*3617A**	28,800	TDR&TXV	15.50		12.50	58CV(A,X)090-16	
CNPV*3617A**	28,800	TDR&TXV	15.00		12.50	58MV(B,C)060-14	
CNPV*3617A**	29,000	TDR&TXV	15.00		12.50	58PH*070-16	
CNPV*3617A**	28,800	TDR&TXV	15.00		12.50	58UVB060-14	
CNPV*3617A**	29,000	TXV		14.00	11.70		
CNPV*3621A**	29,000	TDR&TXV	15.50		12.50	58CV(A,X)110-20	
CNPV*3621A**	28,800	TDR&TXV	15.00		12.50	58MV(B,C)080-14	
CNPV*3621A**	28,800	TDR&TXV	15.00		12.50	58MV(B,C)080-20	

See notes on page 18

COMBINATION RATINGS (CONTINUED)

Unit Size – Series	Indoor Model	Total Cap. BTUH	Factory Supplied Enhancement	SEER		EER	Furnace Model
				Standard Rating	TDR†		
30–32	CNPV*3621A**	28,600	TDR&TXV	15.00		12.50	58MV(B,C)100–20
	CNPV*3621A**	29,000	TDR&TXV	15.25		12.50	58PH*090–16
	CNPV*3621A**	28,800	TDR&TXV	15.00		12.50	58UVB080–14
	CNPV*3621A**	28,800	TDR&TXV	15.00		12.50	58UVB080–20
	CNPV*3621A**	28,600	TDR&TXV	15.00		12.50	58UVB100–20
	CNPV*3621A**	29,000	TXV		14.00	11.70	
	CSPH*3012A**	29,000	TDR&TXV	15.00		12.50	58CV(A,X)070–12
	CSPH*3012A**	29,000	TDR&TXV	15.50		12.50	58CV(A,X)090–16
	CSPH*3012A**	29,000	TDR&TXV	15.00		12.50	58CV(A,X)110–20
	CSPH*3012A**	29,000	TDR&TXV	15.50		12.50	58CV(A,X)135–22
	CSPH*3012A**	29,000	TDR&TXV	15.50		12.50	58CV(A,X)155–22
	CSPH*3012A**	28,800	TDR&TXV	15.00		12.50	58MV(B,C)060–14
	CSPH*3012A**	28,800	TDR&TXV	15.00		12.50	58MV(B,C)080–14
	CSPH*3012A**	29,000	TDR&TXV	15.00		12.50	58MV(B,C)080–20
	CSPH*3012A**	28,800	TDR&TXV	15.00		12.50	58MV(B,C)100–20
	CSPH*3012A**	28,800	TDR&TXV	15.00		12.50	58MV(B,C)120–20
	CSPH*3012A**	28,800	TDR&TXV	15.00		12.50	58MVB040–14
	CSPH*3012A**	29,000	TDR&TXV	15.00		12.50	58PH*070–16
	CSPH*3012A**	29,000	TDR&TXV	15.25		12.50	58PH*090–16
	CSPH*3012A**	29,000	TXV		14.00	11.70	
	CSPH*3612A**	29,000	TDR&TXV	15.50		12.50	58CV(A,X)070–12
	CSPH*3612A**	29,000	TDR&TXV	15.50		13.00	58CV(A,X)090–16
	CSPH*3612A**	29,000	TDR&TXV	15.50		13.00	58CV(A,X)110–20
	CSPH*3612A**	29,000	TDR&TXV	15.50		13.00	58CV(A,X)135–22
	CSPH*3612A**	29,000	TDR&TXV	15.50		13.00	58CV(A,X)155–22
	CSPH*3612A**	29,000	TDR&TXV	15.50		13.00	58MV(B,C)060–14
	CSPH*3612A**	29,000	TDR&TXV	15.50		12.50	58MV(B,C)080–14
	CSPH*3612A**	29,000	TDR&TXV	15.50		13.00	58MV(B,C)080–20
	CSPH*3612A**	29,000	TDR&TXV	15.50		13.00	58MV(B,C)100–20
	CSPH*3612A**	29,000	TDR&TXV	15.50		13.00	58MV(B,C)120–20
	CSPH*3612A**	29,000	TDR&TXV	15.50		12.50	58MVB040–14
	CSPH*3612A**	29,400	TDR&TXV	15.25		12.50	58PH*070–16
	CSPH*3612A**	29,400	TDR&TXV	15.50		13.00	58PH*090–16
	CSPH*3612A**	29,200	TXV		14.00	11.70	
	FE4AN(B,F)003	29,200	TDR&TXV	15.50		13.00	
	FE4AN(B,F)005	30,000	TDR&TXV	16.00		13.20	
	FE4ANF002	29,000	TDR&TXV	15.50		12.50	
	FE5ANB004	30,200	TDR&TXV	16.00		13.20	
	FF1ENP030	28,600	TDR&TXV	14.00		11.70	
	FF1ENP036	29,200	TDR&TXV	14.00		11.70	
	FV4BN(B,F)003	29,200	TDR&TXV	15.50		13.00	
	FV4BN(B,F)005	30,000	TDR&TXV	16.00		13.20	
	FV4BNF002	29,000	TDR&TXV	15.50		12.50	
	FX4CN(B,F)036	29,400	TDR&TXV	14.50		12.20	
	FX4CNF030	29,200	TDR&TXV	15.00		12.50	
FY4ANF030	28,800	TDR&TXV	14.00		11.70		
*CAP**4221A**	35,800	TXV		14.00	12.00		
CAP**3614A**	34,000	TDR&TXV	14.50		12.50	58CV(A,X)070–12	
CAP**3614A**	35,000	TDR&TXV	14.00		12.00	58PH*045–08	
CAP**3614A**	34,400	TXV		14.00	11.50		
CAP**3617A**	35,000	TDR&TXV	15.00		12.50	58CV(A,X)090–16	
CAP**3617A**	35,000	TDR&TXV	15.00		12.50	58MVB060–14	
CAP**3617A**	35,200	TDR&TXV	14.50		12.20	58PH*070–16	
CAP**3617A**	35,000	TDR&TXV	15.00		12.50	58UVB060–14	
CAP**3617A**	35,400	TXV		14.00	11.50		
CAP**3621A**	35,200	TDR&TXV	15.00		13.00	58CV(A,X)110–20	
CAP**3621A**	35,000	TDR&TXV	14.50		12.50	58MVB080–14	
CAP**3621A**	35,000	TDR&TXV	15.00		12.50	58MVB080–20	
CAP**3621A**	35,200	TDR&TXV	15.00		13.00	58MVB100–20	
CAP**3621A**	35,600	TDR&TXV	15.00		12.75	58PH*090–16	
CAP**3621A**	35,800	TDR&TXV	15.25		13.00	58PH*110–20	
CAP**3621A**	35,000	TDR&TXV	14.50		12.50	58UVB080–14	
CAP**3621A**	35,000	TDR&TXV	15.00		12.50	58UVB080–20	
CAP**3621A**	35,200	TDR&TXV	15.00		13.00	58UVB100–20	
CAP**3621A**	35,400	TXV		14.00	11.50		
CAP**4221A**	35,400	TDR&TXV	15.00		13.00	58CV(A,X)110–20	
CAP**4221A**	35,200	TDR&TXV	14.50		12.50	58MVB080–14	
CAP**4221A**	35,400	TDR&TXV	15.00		12.50	58MVB080–20	
CAP**4221A**	35,400	TDR&TXV	15.00		12.50	58MVB100–20	
CAP**4221A**	35,800	TDR&TXV	15.25		13.00	58PH*090–16	
CAP**4221A**	36,000	TDR&TXV	15.25		13.00	58PH*110–20	

24ACA4

See notes on page 18

COMBINATION RATINGS (CONTINUED)

24ACA4

Unit Size – Series	Indoor Model	Total Cap. BTUH	Factory Supplied Enhancement	SEER		EER	Furnace Model
				Standard Rating	TDR†		
36-31	CAP**4221A**	35,200	TDR&TXV	14.50		12.50	58UVB080-14
	CAP**4221A**	35,400	TDR&TXV	15.00		12.50	58UVB080-20
	CAP**4221A**	35,400	TDR&TXV	15.00		12.50	58UVB100-20
	CAP**4224A**	35,400	TDR&TXV	15.00		13.00	58CV(A,X)135-22
	CAP**4224A**	35,200	TDR&TXV	15.00		12.50	58MVB040-14
	CAP**4224A**	35,400	TDR&TXV	15.00		13.00	58MVB120-20
	CAP**4224A**	35,200	TDR&TXV	15.00		12.50	58UVB040-14
	CAP**4224A**	35,400	TDR&TXV	15.00		13.00	58UVB120-20
	CAP**4224A**	35,800	TXV		14.00	12.00	
	CAP**4224A**	35,800	TXV		14.00	12.00	
	CNPF*3618A**	35,400	TXV		14.00	11.50	
	CNPF*3618A**	35,400	TXV		14.00	11.50	
	CNPH*3617A**	35,000	TDR&TXV	14.50		12.50	58CV(A,X)070-12
	CNPH*3617A**	34,800	TDR&TXV	14.50		12.50	58MVB040-14
	CNPH*3617A**	35,000	TDR&TXV	14.00		12.00	58PH*045-08
	CNPH*3617A**	35,000	TDR&TXV	14.50		12.20	58PH*070-16
	CNPH*3617A**	35,200	TDR&TXV	15.00		12.50	58PH*090-16
	CNPH*3617A**	35,400	TDR&TXV	15.00		12.50	58PH*110-20
	CNPH*3617A**	35,400	TXV		14.00	11.50	
	CNPH*3617A**	35,400	TXV		14.00	11.50	
	CNPH*4221A**	35,200	TDR&TXV	15.00		13.00	58CV(A,X)070-12
	CNPH*4221A**	35,200	TDR&TXV	15.50		13.00	58CV(A,X)135-22
	CNPH*4221A**	35,200	TDR&TXV	15.50		13.00	58CV(A,X)155-22
	CNPH*4221A**	35,200	TDR&TXV	15.00		13.00	58MVB040-14
	CNPH*4221A**	35,400	TDR&TXV	14.50		12.20	58PH*045-08
	CNPH*4221A**	35,400	TDR&TXV	15.00		12.50	58PH*070-16
	CNPH*4221A**	35,600	TDR&TXV	15.25		13.00	58PH*090-16
	CNPH*4221A**	35,800	TDR&TXV	15.25		13.00	58PH*110-20
	CNPH*4221A**	35,200	TXV		14.00	12.00	
	CNPH*4221A**	35,200	TXV		14.00	12.00	
	CNPV*3617A**	35,000	TDR&TXV	14.50		12.50	58CV(A,X)070-12
	CNPV*3617A**	35,000	TDR&TXV	15.00		12.50	58CV(A,X)090-16
	CNPV*3617A**	35,000	TDR&TXV	14.50		12.50	58MVB060-14
	CNPV*3617A**	35,000	TDR&TXV	14.50		12.20	58PH*070-16
	CNPV*3617A**	35,000	TDR&TXV	14.50		12.50	58UVB060-14
	CNPV*3617A**	35,400	TXV		14.00	11.90	
	CNPV*3617A**	35,400	TXV		14.00	11.90	
	CNPV*3621A**	35,000	TDR&TXV	15.00		12.50	58CV(A,X)110-20
	CNPV*3621A**	34,800	TDR&TXV	14.50		12.50	58MVB080-14
	CNPV*3621A**	35,200	TDR&TXV	15.00		12.50	58PH*090-16
	CNPV*3621A**	35,400	TDR&TXV	15.00		12.50	58PH*110-20
	CNPV*3621A**	34,800	TDR&TXV	14.50		12.50	58UVB080-14
	CNPV*3621A**	35,400	TXV		14.00	11.50	
	CNPV*3621A**	35,400	TXV		14.00	11.50	
	CNPV*4221A**	35,400	TDR&TXV	15.50		13.00	58CV(A,X)110-20
	CNPV*4221A**	35,200	TDR&TXV	15.00		13.00	58MVB080-14
	CNPV*4221A**	35,600	TDR&TXV	15.25		13.00	58PH*090-16
	CNPV*4221A**	35,800	TDR&TXV	15.25		13.00	58PH*110-20
	CNPV*4221A**	35,200	TDR&TXV	15.00		13.00	58UVB080-14
	CNPV*4221A**	35,200	TXV		14.00	12.00	
	CNPV*4221A**	35,200	TXV		14.00	12.00	
	CSPH*3612A**	35,000	TDR&TXV	15.00		12.50	58CV(A,X)070-12
	CSPH*3612A**	35,000	TDR&TXV	15.00		12.50	58MVB040-14
	CSPH*3612A**	35,800	TDR&TXV	14.50		12.20	58PH*045-08
	CSPH*3612A**	35,800	TDR&TXV	15.00		12.50	58PH*070-16
	CSPH*3612A**	35,800	TDR&TXV	15.25		13.00	58PH*090-16
	CSPH*3612A**	35,800	TDR&TXV	15.25		13.00	58PH*110-20
	CSPH*3612A**	35,400	TXV		14.00	12.00	
	CSPH*3612A**	35,400	TXV		14.00	12.00	
	CSPH*4212A**	35,200	TDR&TXV	15.00		12.50	58CV(A,X)070-12
	CSPH*4212A**	35,200	TDR&TXV	15.00		12.50	58MVB040-14
	CSPH*4212A**	35,200	TDR&TXV	15.00		12.50	58MVB120-20
	CSPH*4212A**	36,000	TDR&TXV	14.50		12.20	58PH*045-08
	CSPH*4212A**	36,000	TDR&TXV	15.00		12.50	58PH*070-16
	CSPH*4212A**	36,000	TDR&TXV	15.25		13.00	58PH*090-16
	CSPH*4212A**	36,000	TDR&TXV	15.25		13.00	58PH*110-20
	CSPH*4212A**	35,200	TXV		14.00	12.00	
	CSPH*4212A**	35,200	TXV		14.00	12.00	
	FE4ANB006	37,000	TDR&TXV	16.00		13.50	
	FE4ANF002	35,200	TDR&TXV	15.00		12.50	
	FE4ANF003	35,400	TDR&TXV	15.50		13.00	
	FE4ANF005	36,800	TDR&TXV	15.50		13.00	
	FF1ENP036	35,000	TDR&TXV	14.00		12.00	
	FV4BNB006	37,000	TDR&TXV	16.00		13.50	
	FV4BNF002	35,200	TDR&TXV	15.00		12.50	
	FV4BNF003	35,400	TDR&TXV	15.00		13.00	
	FV4BNF005	36,600	TDR&TXV	15.50		13.00	

See notes on page 18

COMBINATION RATINGS (CONTINUED)

Unit Size – Series	Indoor Model	Total Cap. BTUH	Factory Supplied Enhancement	SEER		EER	Furnace Model
				Standard Rating	TDR†		
36–31	FX4CN(B,F)036	36,000	TDR&TXV	15.00		12.50	
	FX4CN(B,F)042	36,600	TDR&TXV	15.00		13.00	
	FY4ANF036	34,800	TDR&TXV	14.00		11.50	
	FY4ANF042	36,000	TDR&TXV	14.00		11.50	
	*CAP**4821A**	40,000	TXV		14.00	12.00	
42–32	CAP**4221A**	39,500	TDR&TXV	15.00		12.50	58CV(A,X)110–20
	CAP**4221A**	39,000	TDR&TXV	14.50		12.20	58MV(B,C)080–14
	CAP**4221A**	39,000	TDR&TXV	14.50		12.20	58MV(B,C)080–20
	CAP**4221A**	39,000	TDR&TXV	14.50		12.50	58MV(B,C)100–20
	CAP**4221A**	39,500	TDR&TXV	15.00		12.50	58PH*090–16
	CAP**4221A**	39,500	TDR&TXV	15.00		12.50	58PH*110–20
	CAP**4221A**	39,000	TDR&TXV	14.50		12.20	58UVB080–14
	CAP**4221A**	39,000	TDR&TXV	14.50		12.20	58UVB080–20
	CAP**4221A**	39,000	TDR&TXV	14.50		12.50	58UVB100–20
	CAP**4221A**	39,500	TXV		13.50	11.70	
	CAP**4224A**	39,500	TDR&TXV	15.00		12.50	58CV(A,X)135–22
	CAP**4224A**	39,500	TDR&TXV	15.00		12.50	58CV(A,X)155–22
	CAP**4224A**	39,000	TDR&TXV	14.50		12.20	58MV(B,C)120–20
	CAP**4224A**	39,000	TDR&TXV	14.50		12.20	58MV(B,C)120–20
	CAP**4224A**	39,500	TDR&TXV	15.00		12.50	58PH*135–20
	CAP**4224A**	39,000	TDR&TXV	14.50		12.20	58UVB120–20
	CAP**4224A**	39,500	TXV		13.50	11.70	
	CAP**4817A**	40,000	TDR&TXV	15.00		12.50	58CV(A,X)090–16
	CAP**4817A**	40,000	TDR&TXV	14.50		12.20	58MV(B,C)060–14
	CAP**4817A**	40,000	TDR&TXV	14.50		12.20	58PH*070–16
	CAP**4817A**	40,000	TDR&TXV	14.50		12.20	58UVB060–14
	CAP**4817A**	40,000	TXV		14.00	12.00	
	CAP**4821A**	40,000	TDR&TXV	15.00		12.50	58CV(A,X)110–20
	CAP**4821A**	39,500	TDR&TXV	14.50		12.20	58MV(B,C)080–14
	CAP**4821A**	39,500	TDR&TXV	14.50		12.20	58MV(B,C)080–20
	CAP**4821A**	39,500	TDR&TXV	14.50		12.50	58MV(B,C)100–20
	CAP**4821A**	40,000	TDR&TXV	15.00		12.75	58PH*090–16
	CAP**4821A**	40,000	TDR&TXV	15.25		13.00	58PH*110–20
	CAP**4821A**	39,500	TDR&TXV	14.50		12.20	58UVB080–14
	CAP**4821A**	39,500	TDR&TXV	14.50		12.20	58UVB080–20
	CAP**4821A**	39,500	TDR&TXV	14.50		12.50	58UVB100–20
	CAP**4824A**	40,000	TDR&TXV	15.00		12.50	58CV(A,X)135–22
	CAP**4824A**	40,000	TDR&TXV	15.00		12.50	58CV(A,X)155–22
	CAP**4824A**	40,000	TDR&TXV	15.00		12.50	58MV(B,C)120–20
	CAP**4824A**	39,500	TDR&TXV	14.50		12.20	58MVB040–14
	CAP**4824A**	40,000	TDR&TXV	15.00		13.00	58PH*135–20
	CAP**4824A**	40,000	TDR&TXV	15.00		12.50	58UVB120–20
	CAP**4824A**	40,000	TXV		14.00	12.00	
	CNPF*4818A**	40,000	TXV		14.00	12.00	
	CNPH*4221A**	39,000	TDR&TXV	14.00		12.00	58CV(A,X)070–12
	CNPH*4221A**	39,500	TDR&TXV	14.50		12.20	58CV(A,X)090–16
	CNPH*4221A**	39,500	TDR&TXV	14.50		12.20	58CV(A,X)110–20
CNPH*4221A**	39,500	TDR&TXV	15.00		12.50	58CV(A,X)135–22	
CNPH*4221A**	39,500	TDR&TXV	15.00		12.50	58CV(A,X)155–22	
CNPH*4221A**	39,000	TDR&TXV	14.50		12.20	58MV(B,C)060–14	
CNPH*4221A**	39,000	TDR&TXV	14.00		12.00	58MV(B,C)080–14	
CNPH*4221A**	39,000	TDR&TXV	14.50		12.20	58MV(B,C)080–20	
CNPH*4221A**	39,000	TDR&TXV	14.50		12.20	58MV(B,C)100–20	
CNPH*4221A**	39,000	TDR&TXV	14.50		12.20	58MV(B,C)120–20	
CNPH*4221A**	39,000	TDR&TXV	14.00		12.00	58MVB040–14	
CNPH*4221A**	39,000	TDR&TXV	14.00		12.00	58PH*070–16	
CNPH*4221A**	39,500	TDR&TXV	15.00		12.50	58PH*090–16	
CNPH*4221A**	39,500	TDR&TXV	15.00		12.50	58PH*110–20	
CNPH*4221A**	39,500	TDR&TXV	15.00		12.50	58PH*135–20	
CNPH*4221A**	39,500	TXV		13.50	11.70		
CNPH*4821A**	40,000	TDR&TXV	14.50		12.20	58CV(A,X)070–12	
CNPH*4821A**	40,000	TDR&TXV	15.00		12.50	58CV(A,X)090–16	
CNPH*4821A**	40,000	TDR&TXV	15.00		12.50	58CV(A,X)110–20	
CNPH*4821A**	40,000	TDR&TXV	15.00		12.50	58CV(A,X)135–22	
CNPH*4821A**	40,000	TDR&TXV	15.50		13.00	58CV(A,X)155–22	
CNPH*4821A**	40,000	TDR&TXV	15.00		12.50	58MV(B,C)060–14	
CNPH*4821A**	39,500	TDR&TXV	14.50		12.20	58MV(B,C)080–14	
CNPH*4821A**	39,500	TDR&TXV	14.50		12.20	58MV(B,C)080–20	
CNPH*4821A**	39,500	TDR&TXV	15.00		12.50	58MV(B,C)100–20	
CNPH*4821A**	40,000	TDR&TXV	15.00		12.50	58MV(B,C)120–20	

24ACA4

See notes on page 18

COMBINATION RATINGS (CONTINUED)

24ACA4

Unit Size – Series	Indoor Model	Total Cap. BTUH	Factory Supplied Enhancement	SEER		EER	Furnace Model
				Standard Rating	TDR†		
42-32	CNPH*4821A**	39,500	TDR&TXV	14.50		12.20	58MVB040-14
	CNPH*4821A**	4,000	TDR&TXV	14.50		12.20	58PH*070-16
	CNPH*4821A**	4,000	TDR&TXV	15.25		13.00	58PH*090-16
	CNPH*4821A**	40,500	TDR&TXV	15.25		13.00	58PH*110-20
	CNPH*4821A**	40,500	TDR&TXV	15.25		13.00	58PH*135-20
	CNPH*4821A**	40,000	TXV		14.00	12.00	
	CNPV*4221A**	39,500	TDR&TXV	14.50		12.20	58CV(A,X)110-20
	CNPV*4221A**	39,000	TDR&TXV	14.00		12.00	58MV(B,C)080-14
	CNPV*4221A**	39,000	TDR&TXV	14.50		12.20	58MV(B,C)080-20
	CNPV*4221A**	39,000	TDR&TXV	14.50		12.20	58MV(B,C)100-20
	CNPV*4221A**	39,500	TDR&TXV	15.00		12.50	58PH*090-16
	CNPV*4221A**	39,500	TDR&TXV	15.00		12.50	58PH*110-20
	CNPV*4221A**	39,000	TDR&TXV	14.00		12.00	58UVB080-14
	CNPV*4221A**	39,000	TDR&TXV	14.50		12.20	58UVB080-20
	CNPV*4221A**	39,000	TDR&TXV	14.50		12.20	58UVB100-20
	CNPV*4221A**	39,500	TXV		13.50	11.70	
	CNPV*4821A**	40,000	TDR&TXV	15.00		12.50	58CV(A,X)110-20
	CNPV*4821A**	39,500	TDR&TXV	14.50		12.20	58MV(B,C)080-14
	CNPV*4821A**	39,500	TDR&TXV	14.50		12.20	58MV(B,C)080-20
	CNPV*4821A**	39,500	TDR&TXV	15.00		12.50	58MV(B,C)100-20
	CNPV*4821A**	40,000	TDR&TXV	15.00		13.00	58PH*090-16
	CNPV*4821A**	40,500	TDR&TXV	15.25		13.00	58PH*110-20
	CNPV*4821A**	39,500	TDR&TXV	14.50		12.20	58UVB080-14
	CNPV*4821A**	39,500	TDR&TXV	14.50		12.20	58UVB080-20
	CNPV*4821A**	39,500	TDR&TXV	15.00		12.50	58UVB100-20
	CNPV*4821A**	40,000	TXV		14.00	12.00	
	CNPV*4824A**	40,000	TDR&TXV	15.00		12.50	58CV(A,X)135-22
	CNPV*4824A**	40,000	TDR&TXV	15.00		12.50	58CV(A,X)155-22
	CNPV*4824A**	40,000	TDR&TXV	15.00		12.50	58MV(B,C)120-20
	CNPV*4824A**	39,500	TDR&TXV	14.50		12.20	58MVB040-14
	CNPV*4824A**	40,500	TDR&TXV	15.25		13.00	58PH*135-20
	CNPV*4824A**	40,000	TDR&TXV	15.00		12.50	58UVB120-20
	CNPV*4824A**	40,000	TXV		14.00	12.00	
	CSPH*4212A**	39,500	TDR&TXV	14.50		12.20	58CV(A,X)070-12
	CSPH*4212A**	39,500	TDR&TXV	15.00		12.50	58CV(A,X)090-16
	CSPH*4212A**	39,500	TDR&TXV	15.00		12.20	58CV(A,X)110-20
	CSPH*4212A**	39,500	TDR&TXV	15.00		12.50	58CV(A,X)135-22
	CSPH*4212A**	39,500	TDR&TXV	15.00		12.50	58CV(A,X)155-22
	CSPH*4212A**	39,000	TDR&TXV	14.50		12.20	58MV(B,C)060-14
	CSPH*4212A**	39,000	TDR&TXV	14.50		12.20	58MV(B,C)080-14
	CSPH*4212A**	39,000	TDR&TXV	14.50		12.20	58MV(B,C)080-20
	CSPH*4212A**	39,000	TDR&TXV	14.50		12.20	58MV(B,C)100-20
	CSPH*4212A**	39,000	TDR&TXV	14.50		12.50	58MV(B,C)120-20
	CSPH*4212A**	39,000	TDR&TXV	14.50		12.20	58MVB040-14
	CSPH*4212A**	40,000	TDR&TXV	14.50		12.20	58PH*070-16
	CSPH*4212A**	40,000	TDR&TXV	15.00		13.00	58PH*090-16
	CSPH*4212A**	40,000	TDR&TXV	15.25		13.00	58PH*110-20
	CSPH*4212A**	40,000	TDR&TXV	15.25		13.00	58PH*135-20
	CSPH*4212A**	40,000	TXV		14.00	12.00	
	CSPH*4812A**	40,000	TDR&TXV	14.50		12.20	58CV(A,X)070-12
	CSPH*4812A**	40,000	TDR&TXV	15.00		12.50	58CV(A,X)090-16
	CSPH*4812A**	40,000	TDR&TXV	15.00		12.50	58CV(A,X)110-20
	CSPH*4812A**	40,000	TDR&TXV	15.00		12.50	58CV(A,X)135-22
	CSPH*4812A**	40,000	TDR&TXV	15.50		13.00	58CV(A,X)155-22
	CSPH*4812A**	40,000	TDR&TXV	14.50		12.20	58MV(B,C)060-14
	CSPH*4812A**	40,000	TDR&TXV	14.50		12.20	58MV(B,C)080-14
	CSPH*4812A**	40,000	TDR&TXV	14.50		12.20	58MV(B,C)080-20
	CSPH*4812A**	40,000	TDR&TXV	15.00		12.50	58MV(B,C)100-20
	CSPH*4812A**	40,000	TDR&TXV	15.00		12.50	58MV(B,C)120-20
	CSPH*4812A**	40,000	TDR&TXV	14.50		12.20	58MVB040-14
	CSPH*4812A**	40,000	TDR&TXV	14.50		12.20	58PH*070-16
	CSPH*4812A**	40,500	TDR&TXV	15.00		13.00	58PH*090-16
	CSPH*4812A**	40,500	TDR&TXV	15.25		13.00	58PH*110-20
	CSPH*4812A**	40,500	TDR&TXV	15.00		13.00	58PH*135-20
	CSPH*4812A**	40,000	TXV		14.00	12.00	
	FE4AN(B,F)003	39,500	TDR&TXV	15.00		12.50	
	FE4AN(B,F)005	41,000	TDR&TXV	15.50		13.00	
	FE4ANB006	41,000	TDR&TXV	15.50		13.50	
	FE5ANB004	41,000	TDR&TXV	16.00		13.50	
	FV4BN(B,F)003	39,500	TDR&TXV	15.00		12.50	
	FV4BN(B,F)005	41,000	TDR&TXV	15.50		13.00	
	FV4BNB006	41,000	TDR&TXV	15.50		13.50	

See notes on page 18

COMBINATION RATINGS (CONTINUED)

Unit Size – Series	Indoor Model	Total Cap. BTUH	Factory Supplied Enhancement	SEER		EER	Furnace Model
				Standard Rating	TDR†		
42–32	FX4CN(B,F)042	40,500	TDR&TXV	14.50		12.50	
	FX4CN(B,F)048	41,500	TDR&TXV	15.00		13.00	
	FY4ANF042	40,000	TDR&TXV	13.50		11.70	
	FY4ANF048	40,500	TDR&TXV	13.50		11.70	
	*CAP**6024A**	48,000	TXV		14.00	11.50	
	CAP**4817A**	46,000	TDR&TXV	14.20		11.50	58CV(A,X)090–16
	CAP**4817A**	46,500	TDR&TXV	13.00		11.00	58PH*070–16
	CAP**4817A**	46,500	TXV		13.50	11.20	
	CAP**4821A**	46,500	TDR&TXV	14.20		12.00	58CV(A,X)110–20
	CAP**4821A**	46,500	TDR&TXV	14.20		11.50	58MVB080–20
	CAP**4821A**	46,500	TDR&TXV	14.20		11.50	58MVB100–20
	CAP**4821A**	46,500	TDR&TXV	14.00		11.70	58PH*090–16
	CAP**4821A**	46,500	TDR&TXV	14.50		12.00	58PH*110–20
	CAP**4821A**	46,500	TDR&TXV	14.20		11.50	58UVB080–20
	CAP**4821A**	46,500	TDR&TXV	14.20		11.50	58UVB100–20
	CAP**4821A**	47,500	TXV		13.50	11.20	
	CAP**4824A**	47,000	TDR&TXV	14.50		12.00	58CV(A,X)135–22
	CAP**4824A**	47,000	TDR&TXV	14.50		12.00	58CV(A,X)155–22
	CAP**4824A**	46,500	TDR&TXV	14.20		11.50	58MVB120–20
	CAP**4824A**	46,500	TDR&TXV	14.00		12.00	58PH*135–20
	CAP**4824A**	46,500	TDR&TXV	14.20		11.50	58UVB120–20
	CAP**4824A**	47,500	TXV		13.50	11.20	
	CAP**6021A**	47,000	TDR&TXV	14.50		12.00	58CV(A,X)110–20
	CAP**6021A**	46,500	TDR&TXV	14.20		12.00	58MVB080–20
	CAP**6021A**	46,500	TDR&TXV	14.50		12.00	58MVB100–20
	CAP**6021A**	48,000	TDR&TXV	14.50		12.20	58PH*090–16
	CAP**6021A**	48,000	TDR&TXV	15.00		12.50	58PH*110–20
	CAP**6021A**	46,500	TDR&TXV	14.20		12.00	58UVB080–20
	CAP**6021A**	46,500	TDR&TXV	14.50		12.00	58UVB100–20
	CAP**6021A**	47,000	TXV		14.00	11.50	
	CAP**6024A**	48,000	TDR&TXV	14.50		12.00	58CV(A,X)135–22
	CAP**6024A**	48,000	TDR&TXV	15.00		12.50	58CV(A,X)155–22
	CAP**6024A**	47,500	TDR&TXV	14.50		12.00	58MVB120–20
	CAP**6024A**	47,500	TDR&TXV	14.50		12.20	58PH*135–20
	CAP**6024A**	47,500	TDR&TXV	14.50		12.00	58UVB120–20
48–31	CNPF*4818A**	45,500	TXV		13.50	11.20	
	CNPH*4821A**	46,000	TDR&TXV	14.20		12.00	58CV(A,X)090–16
	CNPH*4821A**	45,500	TDR&TXV	14.20		11.50	58MVB080–20
	CNPH*4821A**	46,500	TDR&TXV	13.00		11.00	58PH*070–16
	CNPH*4821A**	47,000	TDR&TXV	14.50		12.00	58PH*090–16
	CNPH*4821A**	47,000	TDR&TXV	14.50		12.20	58PH*110–20
	CNPH*4821A**	47,000	TDR&TXV	14.50		12.00	58PH*135–20
	CNPH*4821A**	46,500	TXV		13.50	11.20	
	CNPH*6024A**	46,500	TDR&TXV	14.50		12.00	58CV(A,X)090–16
	CNPH*6024A**	46,500	TDR&TXV	14.20		12.00	58MVB080–20
	CNPH*6024A**	47,500	TDR&TXV	13.50		11.20	58PH*070–16
	CNPH*6024A**	48,000	TDR&TXV	14.50		12.20	58PH*090–16
	CNPH*6024A**	48,000	TDR&TXV	15.00		12.50	58PH*110–20
	CNPH*6024A**	48,000	TDR&TXV	14.75		12.20	58PH*135–20
	CNPH*6024A**	46,500	TXV		14.00	11.50	
	CNPV*4821A**	46,500	TDR&TXV	14.00		12.00	58CV(A,X)090–16
	CNPV*4821A**	46,000	TDR&TXV	14.20		12.00	58CV(A,X)110–20
	CNPV*4821A**	45,500	TDR&TXV	14.20		11.50	58MVB080–20
	CNPV*4821A**	46,000	TDR&TXV	14.20		12.00	58MVB100–20
	CNPV*4821A**	47,000	TDR&TXV	14.00		12.00	58PH*090–16
	CNPV*4821A**	47,000	TDR&TXV	14.50		12.20	58PH*110–20
	CNPV*4821A**	45,500	TDR&TXV	14.20		11.50	58UVB080–20
	CNPV*4821A**	46,000	TDR&TXV	14.20		12.00	58UVB100–20
	CNPV*4821A**	46,500	TXV		13.50	11.20	
	CNPV*4824A**	46,000	TDR&TXV	14.50		12.00	58CV(A,X)135–22
	CNPV*4824A**	46,000	TDR&TXV	14.50		12.00	58CV(A,X)155–22
	CNPV*4824A**	45,500	TDR&TXV	14.50		12.00	58MVB120–20
	CNPV*4824A**	47,000	TDR&TXV	14.50		12.00	58PH*135–20
	CNPV*4824A**	45,500	TDR&TXV	14.50		12.00	58UVB120–20
	CNPV*4824A**	46,500	TXV		13.50	11.20	
	CNPV*6024A**	46,500	TDR&TXV	14.50		12.00	58CV(A,X)135–22
	CNPV*6024A**	46,500	TDR&TXV	15.00		12.50	58CV(A,X)155–22

24ACA4

See notes on page 18

COMBINATION RATINGS (CONTINUED)

24ACA4

Unit Size – Series	Indoor Model	Total Cap. BTUH	Factory Supplied Enhancement	SEER		EER	Furnace Model
				Standard Rating	TDR†		
48–31	CNPV*6024A**	46,000	TDR&TXV	14.50		12.00	58MVB120–20
	CNPV*6024A**	48,000	TDR&TXV	14.75		12.20	58PH*135–20
	CNPV*6024A**	46,000	TDR&TXV	14.50		12.00	58UVB120–20
	CNPV*6024A**	47,000	TXV		14.00	11.50	
	CSPH*4812A**	45,500	TDR&TXV	14.20		12.00	58CV(A,X)090–16
	CSPH*4812A**	45,500	TDR&TXV	14.20		11.50	58MVB080–20
	CSPH*4812A**	46,500	TDR&TXV	13.00		11.00	58PH*070–16
	CSPH*4812A**	47,000	TDR&TXV	14.00		12.00	58PH*090–16
	CSPH*4812A**	47,000	TDR&TXV	14.50		12.20	58PH*110–20
	CSPH*4812A**	47,000	TDR&TXV	14.00		12.00	58PH*135–20
	CSPH*4812A**	46,500	TXV		13.50	11.20	
	CSPH*6012A**	46,500	TDR&TXV	14.50		12.00	58CV(A,X)090–16
	CSPH*6012A**	46,000	TDR&TXV	14.20		12.00	58MVB080–20
	CSPH*6012A**	47,500	TDR&TXV	13.50		11.20	58PH*070–16
	CSPH*6012A**	48,000	TDR&TXV	14.50		12.20	58PH*090–16
	CSPH*6012A**	48,000	TDR&TXV	15.00		12.50	58PH*110–20
	CSPH*6012A**	48,000	TDR&TXV	15.00		12.20	58PH*135–20
	CSPH*6012A**	47,000	TXV		14.00	11.50	
	FE4ANB006	48,500	TDR&TXV	15.00		12.50	
	FE4ANF005	48,000	TDR&TXV	15.00		12.50	
	FV4BNB006	48,500	TDR&TXV	15.00		12.50	
	FV4BNF005	48,000	TDR&TXV	15.00		12.50	
	FX4CN(B,F)048	48,500	TDR&TXV	14.50		12.00	
	FX4CN(B,F)060	49,500	TDR&TXV	14.70		12.50	
	FY4ANB060	48,500	TDR&TXV	14.00		11.50	
	FY4ANF048	47,500	TDR&TXV	13.50		11.20	
	*CAP**6024A**	59,000	TXV		14.00	12.00	
	CAP**6021A**	55,500	TDR&TXV	14.20		12.00	58MVB080–20
	CAP**6021A**	57,500	TDR&TXV	14.50		12.20	58PH*090–16
	CAP**6021A**	57,500	TDR&TXV	14.50		12.20	58PH*110–20
	CAP**6021A**	55,500	TDR&TXV	14.20		12.00	58UVB080–20
	CAP**6021A**	58,000	TXV		14.00	11.50	
CAP**6024A**	58,000	TDR&TXV	14.50		12.00	58CV(A,X)135–22	
CAP**6024A**	58,000	TDR&TXV	14.50		12.00	58CV(A,X)155–22	
CAP**6024A**	57,500	TDR&TXV	14.50		12.20	58PH*135–20	
CNPH*6024A**	57,500	TDR&TXV	14.20		12.00	58CV(A,X)110–20	
CNPH*6024A**	57,500	TDR&TXV	14.50		12.00	58CV(A,X)135–22	
CNPH*6024A**	58,000	TDR&TXV	14.50		12.00	58CV(A,X)155–22	
CNPH*6024A**	55,500	TDR&TXV	14.20		12.00	58MVB080–20	
CNPH*6024A**	55,500	TDR&TXV	14.50		12.00	58MVB100–20	
CNPH*6024A**	55,500	TDR&TXV	14.50		12.00	58MVB120–20	
CNPH*6024A**	57,000	TDR&TXV	14.00		12.00	58PH*090–16	
CNPH*6024A**	57,500	TDR&TXV	14.50		12.20	58PH*110–20	
CNPH*6024A**	57,500	TDR&TXV	14.50		12.20	58PH*135–20	
CNPH*6024A**	58,000	TXV		14.00	12.00		
CNPV*6024A**	57,500	TDR&TXV	14.00		12.00	58CV(A,X)110–20	
CNPV*6024A**	57,500	TDR&TXV	14.50		12.00	58CV(A,X)135–22	
CNPV*6024A**	58,000	TDR&TXV	14.50		12.00	58CV(A,X)155–22	
CNPV*6024A**	55,500	TDR&TXV	14.50		12.00	58MVB120–20	
CNPV*6024A**	57,500	TDR&TXV	14.50		12.20	58PH*135–20	
CNPV*6024A**	55,500	TDR&TXV	14.50		12.00	58UVB120–20	
CNPV*6024A**	58,000	TXV		14.00	12.00		
CSPH*6012A**	57,500	TDR&TXV	14.20		12.00	58CV(A,X)110–20	
CSPH*6012A**	57,500	TDR&TXV	14.50		12.00	58CV(A,X)135–22	
CSPH*6012A**	58,000	TDR&TXV	14.50		12.00	58CV(A,X)155–22	
CSPH*6012A**	56,000	TDR&TXV	14.20		12.00	58MVB080–20	
CSPH*6012A**	56,000	TDR&TXV	14.50		12.00	58MVB100–20	
CSPH*6012A**	56,000	TDR&TXV	14.50		12.00	58MVB120–20	
CSPH*6012A**	57,500	TDR&TXV	14.50		12.20	58PH*090–16	
CSPH*6012A**	58,000	TDR&TXV	14.50		12.20	58PH*110–20	
CSPH*6012A**	57,500	TDR&TXV	14.50		12.20	58PH*135–20	
CSPH*6012A**	58,000	TXV		14.00	12.00		
FE4ANB006	59,000	TDR&TXV	14.50		12.50		
FV4BNB006	59,000	TDR&TXV	14.50		12.50		
FX4CN(B,F)060	59,500	TDR&TXV	14.00		12.00		
FY4ANB060	59,000	TDR&TXV	13.50		11.50		

* Tested combination

† In most cases, only 1 method should be used to achieve TDR function. Using more than 1 method in a system may cause degradation in performance. Use either the accessory Time–Delay Relay KAATD0101TDR or a furnace equipped with TDR. Most Carrier furnaces are equipped with TDR.

EER — Energy Efficiency Ratio

SEER — Seasonal Energy Efficiency Ratio

TDR — Time–Delay Relay

TXV — Thermostatic Expansion Valve

- NOTES:**
1. Ratings are net values reflecting the effects of circulating fan motor heat. Supplemental electric heat is not included.
 2. Tested outdoor/indoor combinations have been tested in accordance with DOE test procedures for central air conditioners. Ratings for other combinations are determined under DOE computer simulation procedures.
 3. Determine actual CFM values obtainable for your system by referring to fan performance data in fan coil or furnace coil literature.
 4. Do not apply with capillary tube coils as performance and reliability are significantly affected.

DETAILED COOLING CAPACITIES#

EVAPORATOR AIR		CONDENSER ENTERING AIR TEMPERATURES deg °F (°C)																	
CFM	EWB °F (°C)	75 (23.9)			85 (29.4)			95 (35)			105 (40.6)			115 (46.1)			125 (51.7)		
		Capacity MBtuHt	Sens†	Total System KW**	Capacity MBtuHt	Sens†	Total System KW**	Capacity MBtuHt	Sens†	Total System KW**	Capacity MBtuHt	Sens†	Total System KW**	Capacity MBtuHt	Sens†	Total System KW**	Capacity MBtuHt	Sens†	Total System KW**
		24ACA418A31 Outdoor Section With CAP**2414A** Indoor Section																	
	72 (22.2)	21.57	11.21	1.17	20.52	10.80	1.32	19.45	10.39	1.49	18.33	9.97	1.67	17.18	9.55	1.88	15.93	9.09	2.11
525	67 (19.4)	19.60	13.63	1.18	18.85	13.23	1.33	17.67	12.81	1.50	16.65	12.40	1.69	15.60	11.96	1.90	14.46	11.51	2.13
	62 (16.7)	17.82	16.04	1.19	16.96	15.63	1.34	16.08	15.22	1.51	15.18	14.79	1.70	14.29	14.29	1.91	13.44	13.44	2.13
	57 (13.9)	17.16	17.16	1.20	16.49	16.49	1.35	15.79	15.79	1.51	15.06	15.06	1.70	14.29	14.29	1.91	13.44	13.44	2.13
	72 (22.2)	22.01	11.78	1.19	20.92	11.37	1.34	19.79	10.95	1.51	18.62	10.52	1.70	17.42	10.09	1.91	16.12	9.62	2.14
600	67 (19.4)	20.03	14.54	1.21	19.03	14.13	1.36	18.00	13.71	1.53	16.94	13.28	1.71	15.84	12.84	1.92	14.66	12.37	2.15
	62 (16.7)	18.27	17.29	1.22	17.38	16.88	1.37	16.50	16.41	1.54	15.70	15.70	1.72	14.86	14.86	1.93	13.95	13.95	2.16
	57 (13.9)	17.96	17.96	1.22	17.23	17.23	1.37	16.48	16.48	1.54	15.70	15.70	1.72	14.87	14.87	1.93	13.95	13.95	2.16
675	72 (22.2)	22.34	12.32	1.22	21.20	11.90	1.37	20.03	11.47	1.54	18.83	11.04	1.72	17.58	10.60	1.93	16.24	10.13	2.16
	67 (19.4)	20.35	15.42	1.23	19.31	15.00	1.38	18.25	14.57	1.55	17.15	14.13	1.74	16.02	13.68	1.95	14.80	13.21	2.18
	62 (16.7)	18.68	18.46	1.24	17.86	17.86	1.39	17.06	17.06	1.56	16.22	16.22	1.75	15.33	15.33	1.95	14.37	14.37	2.18
	57 (13.9)	18.63	18.63	1.24	17.86	17.86	1.39	17.06	17.06	1.56	16.22	16.22	1.75	15.33	15.33	1.95	14.37	14.37	2.18

Cooling Indoor Model	Capacity	Power	Furnace Model	Cooling Indoor Model	Capacity	Power	Furnace Model
*CAP**2414A**	1.00	1.00		CNPH*2417A**	0.99	0.88	58MVB060-14
CAP**1814A**	0.99	1.02		CNPH*2417A**	0.99	0.88	58MVB060-14
CAP**2417A**	1.00	1.00		CSPH*2412A**	0.99	0.88	58MVB060-14
CNPF*2418A**	1.00	1.00		CNPH*2417A**	0.99	0.88	58MVB080-14
CNPH*2417A**	1.00	1.00		CSPH*2412A**	0.99	0.88	58MVB080-14
CNPH*1814A**	0.99	1.02		CAP**1814A**	1.00	0.90	58PH*045-08
CNPH*2414A**	1.00	1.00		CAP**2414A**	1.01	0.89	58PH*045-08
CNPH*2412A**	1.00	1.00		CNPH*2417A**	1.01	0.89	58PH*045-08
CSPH*2412A**	1.00	0.96		CNPH*1814A**	1.00	0.90	58PH*045-08
FE4ANF002	1.01	0.88		CNPH*2414A**	1.01	0.89	58PH*045-08
FF1ENP018	0.99	1.02		CSPH*2412A**	1.01	0.89	58PH*045-08
FF1ENP024	1.00	1.03		CAP**2417A**	0.99	0.88	58UVB060-14
FV4BNF002	1.01	0.88		CNPH*2417A**	0.99	0.88	58UVB060-14
FX4CNF018	1.00	0.88					
FX4CNF024	1.02	0.90					

See notes on page 26

Cooling Indoor Model	Capacity	Power	Furnace Model	Cooling Indoor Model	Capacity	Power	Furnace Model
FY4ANF018	0.99	1.02					
FY4ANF024	0.98	1.00					
CAP**1814A**	0.99	0.90	58CV(A,X)070-12				
CAP**2414A**	0.99	0.88	58CV(A,X)070-12				
CNPH*2417A**	0.99	0.88	58CV(A,X)070-12				
CNPH*1814A**	0.98	0.90	58CV(A,X)070-12				
CNPH*2414A**	0.99	0.88	58CV(A,X)070-12				
CSPH*2412A**	0.99	0.88	58CV(A,X)070-12				
CAP**2417A**	0.99	0.88	58CV(A,X)090-16				
CNPH*2417A**	0.99	0.88	58CV(A,X)090-16				
CNPH*2417A**	0.99	0.88	58CV(A,X)090-16				
CSPH*2412A**	0.99	0.88	58CV(A,X)090-16				
CNPH*2417A**	0.99	0.88	58MVB040-14				
CSPH*2412A**	0.99	0.88	58MVB040-14				
CAP**2417A**	0.99	0.88	58MVB060-14				

DETAILED COOLING CAPACITIES# (CONTINUED)

CONDENSER ENTERING AIR TEMPERATURES deg °F (°C)

CFM	EWB °F (°C)	75 (23.9)			85 (29.4)			95 (35)			105 (40.6)			115 (46.1)			125 (51.7)		
		Capacity MBtuHt		Total Sys-tem KW**	Capacity MBtuHt		Total Sys-tem KW**	Capacity MBtuHt		Total Sys-tem KW**	Capacity MBtuHt		Total Sys-tem KW**	Capacity MBtuHt		Total Sys-tem KW**	Capacity MBtuHt		Total Sys-tem KW**
		Total	Sens†		Total	Sens†		Total	Sens†		Total	Sens†		Total	Sens†		Total	Sens†	
700	72 (22.2)	27.67	13.73	1.55	26.44	13.29	1.73	25.16	12.82	1.94	23.80	12.34	2.17	22.34	11.83	2.43	20.73	11.28	2.71
	67 (19.4)	25.12	16.76	1.55	23.98	16.31	1.74	22.80	15.84	1.95	21.54	15.35	2.18	20.19	14.83	2.43	18.72	14.27	2.72
	62 (16.7)	22.88	19.79	1.55	21.86	19.33	1.74	20.79	18.85	1.95	19.68	18.33	2.18	18.60	18.60	2.44	17.49	17.49	2.72
	57 (13.9)	22.21	22.21	1.55	21.39	21.39	1.74	20.53	20.53	1.95	19.60	19.60	2.18	18.60	18.60	2.44	17.49	17.49	2.72
	52 (22.2)	28.21	14.42	1.59	26.93	13.97	1.77	25.58	13.49	1.98	24.17	13.01	2.21	22.65	12.49	2.47	20.99	11.93	2.75
800	67 (19.4)	25.62	17.85	1.59	24.43	17.39	1.77	23.20	16.92	1.98	21.90	16.42	2.21	20.50	15.89	2.47	18.98	15.32	2.76
	62 (16.7)	23.44	21.28	1.59	22.40	20.78	1.78	21.36	21.36	1.99	20.39	20.39	2.22	19.32	19.32	2.47	18.13	18.13	2.76
	57 (13.9)	23.17	23.17	1.59	22.30	22.30	1.78	21.37	21.37	1.99	20.39	20.39	2.22	19.32	19.32	2.47	18.13	18.13	2.76
	52 (22.2)	28.61	15.07	1.62	27.28	14.60	1.81	25.89	14.13	2.02	24.43	13.63	2.25	22.87	13.11	2.51	21.17	12.54	2.79
	67 (19.4)	25.99	18.90	1.63	24.78	18.43	1.81	23.50	17.95	2.02	22.16	17.44	2.25	20.73	16.80	2.51	19.18	16.31	2.79
900	62 (16.7)	23.98	23.86	1.63	23.05	23.05	1.81	22.07	22.07	2.02	21.03	21.03	2.25	19.90	19.90	2.51	18.66	18.66	2.79
	57 (13.9)	23.98	23.98	1.63	23.05	23.05	1.81	22.07	22.07	2.02	21.03	21.03	2.25	19.90	19.90	2.51	18.66	18.66	2.79

24ACA424A032 Outdoor Section With CAP**2414A* Indoor Section

Cooling Indoor Model	Capacity	Power	Furnace Model	Cooling Indoor Model		Capacity	Power	Furnace Model	Cooling Indoor Model		Capacity	Power	Furnace Model		
				Capacity	Power				Capacity	Power					
*CAP**2414A**	1.00	1.00		CSPH*3012A**	1.00	0.90	58CV(A,X)070-12	CSPH*3012A**	1.00	0.90	58MV(B,C)080-14	CSPH*3012A**	1.00	0.90	58MV(B,C)080-14
CAP**2417A**	1.00	1.00		CAP**2417A**	0.99	0.89	58CV(A,X)090-16	CAP**2417A**	0.99	0.89	58MV(B,C)080-20	CAP**2417A**	0.99	0.88	58MV(B,C)080-20
CAP**3014A**	1.01	0.98		CAP**3017A**	1.00	0.89	58CV(A,X)090-16	CAP**3017A**	1.00	0.89	58MV(B,C)080-20	CAP**3017A**	1.00	0.89	58MV(B,C)080-20
CNPF*2418A**	1.00	1.00		CNPF*3017A**	1.00	0.89	58CV(A,X)090-16	CNPF*3017A**	1.00	0.89	58MV(B,C)080-20	CNPF*3017A**	1.00	0.89	58MV(B,C)080-20
CNPH*2417A**	1.00	1.00		CNPH*3017A**	0.99	0.89	58CV(A,X)090-16	CNPH*3017A**	0.99	0.89	58MV(B,C)080-20	CNPH*3017A**	0.99	0.89	58MV(B,C)080-20
CNPH*3017A**	1.01	0.98		CNPV*3017A**	1.00	0.89	58CV(A,X)090-16	CNPV*3017A**	1.00	0.89	58MV(B,C)100-20	CNPV*3017A**	1.00	0.90	58MV(B,C)100-20
CNPV*2414A**	1.00	1.00		CSPH*2412A**	1.00	0.90	58CV(A,X)090-16	CSPH*2412A**	1.00	0.90	58MV(B,C)100-20	CSPH*2412A**	1.00	0.90	58MV(B,C)100-20
CNPV*3014A**	1.01	0.98		CNPH*2417A**	0.99	0.93	58CV(A,X)110-20	CNPH*2417A**	0.99	0.93	58MV(B,C)120-20	CNPH*2417A**	0.99	0.91	58MV(B,C)120-20
CNPV*3017A**	1.01	0.98		CNPH*3017A**	1.00	0.90	58CV(A,X)110-20	CNPH*3017A**	1.00	0.90	58MV(B,C)120-20	CNPH*3017A**	1.00	0.92	58MV(B,C)120-20
CSPH*2412A**	1.01	0.98		CSPH*2412A**	1.00	0.90	58CV(A,X)110-20	CSPH*2412A**	1.00	0.90	58MV(B,C)120-20	CSPH*2412A**	1.00	0.90	58MV(B,C)120-20
CSPH*3012A**	1.02	0.99		CSPH*3012A**	1.01	0.91	58CV(A,X)135-22	CSPH*3012A**	1.01	0.91	58MV(B,C)120-20	CSPH*3012A**	1.01	0.90	58MV(B,C)120-20
FE4ANF003	1.02	0.90		CNPH*2417A**	0.99	0.89	58CV(A,X)135-22	CNPH*2417A**	0.99	0.89	58MV(B,C)040-14	CNPH*2417A**	0.99	0.93	58MV(B,C)040-14
FE4ANF002	1.01	0.89		CNPH*3017A**	1.01	0.91	58CV(A,X)135-22	CNPH*3017A**	1.01	0.91	58MV(B,C)040-14	CNPH*3017A**	1.01	0.90	58MV(B,C)040-14
FE5ANB004	1.04	0.92		CSPH*2412A**	1.00	0.90	58CV(A,X)135-22	CSPH*2412A**	1.00	0.90	58MV(B,C)040-14	CSPH*2412A**	1.00	0.90	58MV(B,C)040-14
FF1ENP024	0.99	0.99		CSPH*3012A**	1.01	0.91	58CV(A,X)155-22	CSPH*3012A**	1.01	0.91	58MV(B,C)040-14	CSPH*3012A**	1.01	0.91	58MV(B,C)040-14
FF1ENP030	0.99	0.99		CNPH*2417A**	0.99	0.89	58CV(A,X)155-22	CNPH*2417A**	0.99	0.89	58MV(B,C)045-08	CNPH*2417A**	0.99	0.92	58PH*045-08
FV4BNB,FJ003	1.02	0.90		CNPH*3017A**	1.01	0.89	58CV(A,X)155-22	CNPH*3017A**	1.01	0.89	58PH*045-08	CNPH*3017A**	1.01	0.91	58PH*045-08
FV4BNF002	1.01	0.89		CSPH*2412A**	1.00	0.90	58CV(A,X)155-22	CSPH*2412A**	1.00	0.90	58PH*045-08	CSPH*2412A**	1.00	0.91	58PH*045-08
FX4CNF024	1.01	0.94		CSPH*3012A**	1.01	0.91	58CV(A,X)155-22	CSPH*3012A**	1.01	0.91	58PH*045-08	CSPH*3012A**	1.01	0.91	58PH*045-08
FX4CNF030	1.02	0.92		CAP**2417A**	0.99	0.89	58MV(B,C)060-14	CAP**2417A**	0.99	0.89	58PH*045-08	CAP**2417A**	0.99	0.92	58PH*045-08
FV4ANF024	0.99	0.99		CAP**3017A**	1.00	0.90	58MV(B,C)060-14	CAP**3017A**	1.00	0.90	58PH*045-08	CAP**3017A**	1.00	0.91	58PH*045-08
FV4ANF030	1.00	0.98		CNPH*2417A**	0.99	0.89	58MV(B,C)060-14	CNPH*2417A**	0.99	0.89	58PH*045-08	CNPH*2417A**	0.99	0.91	58PH*045-08
CAP**2414A**	0.98	0.89		CNPH*3017A**	1.00	0.90	58MV(B,C)060-14	CNPH*3017A**	1.00	0.90	58PH*045-08	CNPH*3017A**	1.00	0.90	58PH*045-08
CAP**3014A**	1.00	0.90		CNPV*2417A**	0.99	0.89	58MV(B,C)060-14	CNPV*2417A**	0.99	0.89	58PH*045-08	CNPV*2417A**	0.99	0.92	58PH*045-08
CNPH*2417A**	0.98	0.92		CNPV*3017A**	1.00	0.90	58MV(B,C)060-14	CNPV*3017A**	1.00	0.90	58PH*045-08	CNPV*3017A**	1.00	0.89	58PH*045-08
CNPH*3017A**	1.00	0.90		CSPH*2412A**	1.00	0.90	58MV(B,C)060-14	CSPH*2412A**	1.00	0.90	58PH*045-08	CSPH*2412A**	1.00	0.90	58PH*045-08
CNPV*2414A**	0.98	0.92		CSPH*3012A**	1.01	0.91	58MV(B,C)060-14	CSPH*3012A**	1.01	0.91	58PH*045-08	CSPH*3012A**	1.01	0.89	58PH*045-08
CNPV*3014A**	1.00	0.90		CNPH*2417A**	0.99	0.89	58MV(B,C)080-14	CNPH*2417A**	0.99	0.89	58PH*045-08	CNPH*2417A**	0.99	0.90	58PH*045-08
CSPH*2412A**	1.00	0.90		CNPH*3017A**	1.00	0.90	58MV(B,C)080-14	CNPH*3017A**	1.00	0.90	58PH*045-08	CNPH*3017A**	1.00	0.90	58PH*045-08

See notes on page 26

Cooling Indoor Model	Capacity	Power	Furnace Model	Cooling Indoor Model		Capacity	Power	Furnace Model	Cooling Indoor Model		Capacity	Power	Furnace Model		
				Capacity	Power				Capacity	Power					
*CAP**2414A**	1.00	1.00		CSPH*3012A**	1.00	0.90	58CV(A,X)070-12	CSPH*3012A**	1.00	0.90	58MV(B,C)080-14	CSPH*3012A**	1.00	0.90	58MV(B,C)080-14
CAP**2417A**	1.00	1.00		CAP**2417A**	0.99	0.89	58CV(A,X)090-16	CAP**2417A**	0.99	0.89	58MV(B,C)080-20	CAP**2417A**	0.99	0.88	58MV(B,C)080-20
CAP**3014A**	1.01	0.98		CAP**3017A**	1.00	0.89	58CV(A,X)090-16	CAP**3017A**	1.00	0.89	58MV(B,C)080-20	CAP**3017A**	1.00	0.89	58MV(B,C)080-20
CNPF*2418A**	1.00	1.00		CNPF*3017A**	1.00	0.89	58CV(A,X)090-16	CNPF*3017A**	1.00	0.89	58MV(B,C)080-20	CNPF*3017A**	1.00	0.89	58MV(B,C)080-20
CNPH*2417A**	1.00	1.00		CNPH*3017A**	0.99	0.89	58CV(A,X)090-16	CNPH*3017A**	0.99	0.89	58MV(B,C)080-20	CNPH*3017A**	0.99	0.89	58MV(B,C)080-20
CNPH*3017A**	1.01	0.98		CNPV*3017A**	1.00	0.89	58CV(A,X)090-16	CNPV*3017A**	1.00	0.89	58MV(B,C)100-20	CNPV*3017A**	1.00	0.90	58MV(B,C)100-20
CNPV*2414A**	1.00	1.00		CSPH*2412A**	1.00	0.90	58CV(A,X)090-16	CSPH*2412A**	1.00	0.90	58MV(B,C)100-20	CSPH*2412A**	1.00	0.90	58MV(B,C)100-20
CNPV*3014A**	1.01	0.98		CNPH*2417A**	0.99	0.93	58CV(A,X)110-20	CNPH*2417A**	0.99	0.93	58MV(B,C)120-20	CNPH*2417A**	0.99	0.91	58MV(B,C)120-20
CNPV*3017A**	1.01	0.98		CNPH*3017A**	1.00	0.90	58CV(A,X)110-20	CNPH*3017A**	1.00	0.90	58MV(B,C)120-20	CNPH*3017A**	1.00	0.92	58MV(B,C)120-20
CSPH*2412A**	1.01	0.98		CSPH*2412A**	1.00	0.90	58CV(A,X)110-20	CSPH*2412A**	1.00	0.90	58MV(B,C)120-20	CSPH*2412A**	1.00	0.90	58MV(B,C)120-20
CSPH*3012A**	1.02	0.99		CSPH*3012A**	1.01	0.91	58CV(A,X)135-22	CSPH*3012A**	1.01	0.91	58MV(B,C)120-20	CSPH*3012A**	1.01	0.90	58MV(B,C)120-20
FE4ANF003	1.02	0.90		CNPH*2417A**	0.99	0.89	58CV(A,X)135-22	CNPH*2417A**	0.99	0.89	58MV(B,C)040-14	CNPH*2417A**	0.99	0.93	58MV(B,C)040-14
FE4ANF002	1.01	0.89		CNPH*3017A**	1.01	0.91	58CV(A,X)135-22	CNPH*3017A**	1.01	0.91	58MV(B,C)040-14	CNPH*3017A**	1.01	0.90	58MV(B,C)040-14
FE5ANB004	1.04	0.92		CSPH*2412A**	1.00	0.90	58CV(A,X)135-22</								

DETAILED COOLING CAPACITIES# (CONTINUED)

EVAPORATOR AIR		CONDENSER ENTERING AIR TEMPERATURES deg °F (°C)											
CFM	EWB °F (°C)	75 (23.9)		85 (29.4)		95 (35)		105 (40.6)		115 (46.1)		125 (51.7)	
		Capacity Total	Capacity Sens†	Capacity Total	Capacity Sens†	Capacity Total	Capacity Sens†	Capacity Total	Capacity Sens†	Capacity Total	Capacity Sens†	Capacity Total	Capacity Sens†
875	72 (22.2)	34.32	17.27	32.83	16.71	31.24	16.13	29.59	15.54	27.80	14.90	25.81	14.20
	67 (19.4)	31.45	21.21	30.06	20.84	28.59	20.05	27.04	19.44	25.38	18.78	23.54	18.08
	62 (18.7)	28.92	25.13	27.56	24.55	26.24	23.94	24.86	23.29	23.47	23.47	22.07	22.07
	57 (13.9)	28.00	28.00	26.98	26.98	25.89	25.89	24.74	24.74	23.48	23.48	22.07	22.07
	72 (22.2)	34.98	18.05	33.32	17.49	31.66	16.90	29.96	16.30	28.11	15.65	26.06	14.95
1000	67 (19.4)	31.98	22.49	30.53	21.91	29.00	21.31	27.40	20.68	25.69	20.03	23.80	19.31
	62 (18.7)	29.44	26.90	28.16	26.29	26.81	26.81	25.62	25.62	24.28	24.28	22.79	22.79
	57 (13.9)	29.10	29.10	28.01	28.01	26.85	26.85	25.62	25.62	24.28	24.28	22.79	22.79
	72 (22.2)	35.27	18.78	33.67	18.21	32.28	17.61	30.22	17.01	28.32	16.36	26.21	15.64
	67 (19.4)	32.36	23.68	30.87	23.10	29.29	22.50	27.66	21.88	25.91	21.21	23.99	20.48
1125	62 (18.7)	30.02	28.49	28.84	28.84	27.62	27.62	26.32	26.32	24.92	24.92	23.35	23.35
	57 (13.9)	29.99	29.99	28.84	28.84	27.62	27.62	26.32	26.32	24.92	24.92	23.35	23.35

Cooling Indoor Model	Capacity	Power	Furnace Model	Cooling Indoor Model		Capacity	Power	Furnace Model	Cooling Indoor Model		Capacity	Power	Furnace Model
				Capacity	Power				Capacity	Power			
*CAP**3014A**	1.00	1.00		CNPV*3617A**	0.99	0.93	58CV(A)090-16	CNPV*3617A**	0.99	0.93	58MM(B)100-20		
CAP**3017A**	1.00	1.00		CSPH*3012A**	1.00	0.94	58CV(A)090-16	CSPH*3012A**	1.00	0.94	58MM(B)100-20		
CAP**3614A**	0.97	0.97		CSPH*3612A**	1.00	0.90	58CV(A)090-16	CSPH*3612A**	1.00	0.90	58MM(B)100-20		
CAP**3617A**	1.01	1.01		CAP**3621A**	1.00	0.90	58CV(A)110-20	CAP**3621A**	1.00	0.90	58MM(B)100-20		
CAP**3621A**	1.01	1.01		CNPV*3017A**	1.00	0.94	58CV(A)110-20	CNPV*3017A**	1.00	0.94	58MM(B)100-20		
CNPV*3618A**	1.00	1.00		CNPV*3617A**	1.00	0.94	58CV(A)110-20	CNPV*3617A**	1.00	0.94	58MM(B)100-20		
CNPV*3017A**	1.00	1.00		CNPV*3621A**	1.00	0.94	58CV(A)110-20	CNPV*3621A**	1.00	0.94	58MM(B)100-20		
CNPV*3617A**	1.00	1.00		CSPH*3012A**	1.00	0.94	58CV(A)110-20	CSPH*3012A**	1.00	0.94	58MM(B)100-20		
CNPV*3017A**	1.00	1.00		CSPH*3612A**	1.00	0.94	58CV(A)110-20	CSPH*3612A**	1.00	0.94	58MM(B)100-20		
CNPV*3617A**	1.00	1.00		CNPV*3017A**	1.00	0.94	58CV(A)135-22	CNPV*3017A**	1.00	0.94	58MM(B)040-14		
CNPV*3621A**	1.00	1.00		CNPV*3617A**	1.00	0.94	58CV(A)135-22	CNPV*3617A**	1.00	0.94	58MM(B)040-14		
CSPH*3012A**	1.00	1.00		CSPH*3012A**	1.00	0.94	58CV(A)135-22	CSPH*3012A**	1.00	0.94	58MM(B)040-14		
CSPH*3612A**	1.01	1.01		CNPV*3017A**	1.00	0.90	58CV(A)155-22	CNPV*3017A**	1.00	0.90	58MM(B)070-16		
FEAANIB.F005	1.01	0.91		CNPV*3617A**	1.00	0.90	58CV(A)155-22	CNPV*3617A**	1.00	0.90	58MM(B)070-16		
FEAANIB.F005	1.03	0.92		CSPH*3012A**	1.00	0.94	58CV(A)155-22	CSPH*3012A**	1.00	0.94	58MM(B)070-16		
FEAANIB.F005	1.00	0.94		CSPH*3612A**	1.00	0.90	58CV(A)155-22	CSPH*3612A**	1.00	0.90	58MM(B)070-16		
FEAANIB004	1.04	0.92		CAP**3017A**	0.99	0.93	58MM(B)060-14	CAP**3017A**	0.99	0.93	58MM(B)070-16		
FF1ENP030	0.99	0.99		CAP**3617A**	0.99	0.93	58MM(B)060-14	CAP**3617A**	0.99	0.93	58MM(B)070-16		
FF1ENP036	1.01	1.01		CNPV*3617A**	0.99	0.93	58MM(B)060-14	CNPV*3617A**	0.99	0.93	58MM(B)070-16		
FV4BNIB.F005	1.01	0.91		CNPV*3017A**	0.99	0.93	58MM(B)060-14	CNPV*3017A**	0.99	0.93	58MM(B)070-16		
FV4BNIB.F005	1.03	0.92		CNPV*3617A**	0.99	0.93	58MM(B)060-14	CNPV*3617A**	0.99	0.93	58MM(B)070-16		
FV4BNIF002	1.00	0.94		CNPV*3012A**	0.99	0.93	58MM(B)060-14	CNPV*3012A**	0.99	0.93	58MM(B)070-16		
FX4CNIB.F036	1.01	0.97		CSPH*3012A**	0.99	0.93	58MM(B)060-14	CSPH*3012A**	0.99	0.93	58MM(B)070-16		
FX4CNIF030	1.01	0.94		CSPH*3612A**	1.00	0.90	58MM(B)060-14	CSPH*3612A**	1.00	0.90	58MM(B)070-16		
FY4ANF030	0.99	0.99		CAP**3621A**	0.99	0.93	58MM(B)060-14	CAP**3621A**	0.99	0.93	58MM(B)070-16		
CAP**3014A**	0.99	0.93	58CV(A)070-12	CNPV*3017A**	0.99	0.93	58MM(B)060-14	CNPV*3017A**	0.99	0.93	58MM(B)070-16		
CAP**3614A**	0.99	0.93	58CV(A)070-12	CNPV*3617A**	0.99	0.93	58MM(B)060-14	CNPV*3617A**	0.99	0.93	58MM(B)070-16		
CNPV*3017A**	0.99	0.93	58CV(A)070-12	CNPV*3621A**	0.99	0.93	58MM(B)060-14	CNPV*3621A**	0.99	0.93	58MM(B)070-16		
CNPV*3617A**	0.99	0.93	58CV(A)070-12	CSPH*3012A**	0.99	0.93	58MM(B)060-14	CSPH*3012A**	0.99	0.93	58MM(B)070-16		
CNPV*3014A**	0.99	0.93	58CV(A)070-12	CSPH*3612A**	0.99	0.93	58MM(B)060-14	CSPH*3612A**	0.99	0.93	58MM(B)070-16		
CSPH*3012A**	1.00	0.94	58CV(A)070-12	CAP**3621A**	1.00	0.94	58MM(B)060-20	CAP**3621A**	1.00	0.94	58MM(B)080-14		
CSPH*3612A**	1.00	0.94	58CV(A)070-12	CNPV*3017A**	0.99	0.93	58MM(B)060-20	CNPV*3017A**	0.99	0.93	58MM(B)080-14		
CAP**3017A**	0.99	0.93	58CV(A)090-16	CNPV*3617A**	0.99	0.93	58MM(B)060-20	CNPV*3617A**	0.99	0.93	58MM(B)080-20		
CAP**3617A**	1.00	0.90	58CV(A)090-16	CNPV*3621A**	1.00	0.94	58MM(B)060-20	CNPV*3621A**	1.00	0.94	58MM(B)080-20		
CNPV*3017A**	0.99	0.93	58CV(A)090-16	CSPH*3012A**	1.00	0.94	58MM(B)060-20	CSPH*3012A**	1.00	0.94	58MM(B)080-20		
CNPV*3617A**	0.99	0.93	58CV(A)090-16	CSPH*3612A**	1.00	0.94	58MM(B)060-20	CSPH*3612A**	1.00	0.94	58MM(B)080-20		
CNPV*3017A**	0.99	0.93	58CV(A)090-16	CAP**3621A**	0.99	0.93	58MM(B)100-20	CAP**3621A**	0.99	0.93	58MM(B)100-20		

See notes on page 26

DETAILED COOLING CAPACITIES# (CONTINUED)

EVAPORATOR AIR		CONDENSER ENTERING AIR TEMPERATURES deg °F (°C)											
CFM	EWB °F (°C)	75 (23.9)		85 (29.4)		95 (35)		105 (40.6)		115 (46.1)		125 (51.7)	
		Capacity MBtu/h†	Sens†	Capacity MBtu/h†	Sens†	Capacity MBtu/h†	Sens†	Capacity MBtu/h†	Sens†	Capacity MBtu/h†	Sens†	Capacity MBtu/h†	Sens†
		Total	System KW**	Total	System KW**	Total	System KW**	Total	System KW**	Total	System KW**	Total	System KW**
1050	72 (22.2)	42.83	2.35	40.92	2.63	38.92	2.89	36.78	3.29	34.47	3.68	31.94	4.12
	67 (19.4)	36.83	2.35	37.06	2.63	35.20	2.94	33.22	3.29	31.08	3.68	28.75	4.12
	62 (16.7)	35.34	2.35	33.74	2.63	32.07	3.05	30.32	3.29	28.58	3.68	26.83	4.12
	57 (13.9)	34.26	2.35	32.98	2.63	31.63	2.94	30.17	3.29	28.58	3.68	26.83	4.12
	72 (22.2)	43.66	2.40	41.67	2.68	39.58	2.99	37.36	3.34	34.96	3.73	32.33	4.17
	67 (19.4)	38.58	2.40	37.74	2.68	35.80	2.99	33.75	3.34	31.55	3.73	29.14	4.17
1200	62 (16.7)	36.18	2.40	34.56	2.68	32.87	2.99	31.35	3.34	29.67	3.73	27.80	4.17
	57 (13.9)	35.72	2.40	34.36	2.68	32.91	2.99	31.36	3.34	29.67	3.73	27.80	4.17
	72 (22.2)	44.27	2.45	42.22	2.73	40.06	3.05	37.77	3.40	35.31	3.79	32.61	4.22
	67 (19.4)	40.14	2.45	38.24	2.73	36.25	2.91	34.15	3.39	31.89	3.78	29.44	4.22
	62 (16.7)	36.97	2.45	35.49	2.73	33.97	3.04	32.33	3.39	30.56	3.78	28.59	4.22
	57 (13.9)	36.94	2.45	35.50	2.73	33.97	3.04	32.34	3.39	30.56	3.78	28.60	4.22

Cooling Indoor Model		Capacity	Power	Furnace Model	Cooling Indoor Model		Capacity	Power	Furnace Model	Cooling Indoor Model		Capacity	Power	Furnace Model
*CAP**4221A**		1.00	1.00		CNPV*3617A**	0.98	0.94	58CV(A)090-16	CNPV*3617A**	0.98	0.96	58PH*070-16		
CAP**3614A**		0.96	1.00		CAP**3621A**	0.98	0.91	58CV(A)110-20	CSPH*3621A**	1.00	0.96	58PH*070-16		
CAP**3617A**		0.99	1.03		CAP**4221A**	0.99	0.91	58CV(A)110-20	CSPH*4221A**	1.01	0.97	58PH*070-16		
CAP**3621A**		0.99	1.03		CNPV*3621A**	0.98	0.94	58CV(A)110-20	CAP**3621A**	0.99	0.94	58PH*090-16		
CAP**4224A**		1.00	1.00		CNPV*4221A**	0.99	0.91	58CV(A)110-20	CAP**4221A**	1.00	0.92	58PH*090-16		
CNPV*3618A**		0.99	1.03		CAP**4224A**	0.99	0.91	58CV(A)135-22	CNPV*3617A**	0.98	0.94	58PH*090-16		
CNPV*3617A**		0.99	1.03		CNPV*4221A**	0.98	0.91	58CV(A)135-22	CNPV*4221A**	0.99	0.92	58PH*090-16		
CNPV*4221A**		0.98	0.98		CNPV*4221A**	0.98	0.91	58CV(A)155-22	CNPV*4221A**	0.98	0.94	58PH*090-16		
CNPV*3617A**		0.99	1.00		CAP**4224A**	0.98	0.94	58MVB040-14	CNPV*4221A**	0.99	0.92	58PH*090-16		
CNPV*3621A**		0.99	1.03		CNPV*4221A**	0.97	0.93	58MVB040-14	CSPH*3612A**	1.00	0.92	58PH*090-16		
CSPH*3612A**		0.99	0.99		CSPH*3612A**	0.98	0.91	58MVB040-14	CAP**4224A**	0.98	0.94	58LVB040-14		
CSPH*4212A**		0.98	0.98		CSPH*3612A**	0.98	0.94	58MVB040-14	CNPV*3617A**	0.98	0.94	58LVB060-14		
FE4ANF002		1.03	0.92		CAP**4221A**	0.99	0.94	58MVB060-14	CAP**3621A**	0.98	0.94	58LVB080-14		
FE4ANF003		0.99	0.91		CNPV*3617A**	0.98	0.94	58MVB060-14	CNPV*4221A**	1.00	0.92	58LVB080-14		
FE4ANF005		1.03	0.95		CAP**3621A**	0.98	0.94	58MVB080-14	CNPV*3621A**	0.99	0.95	58PH*110-20		
FF1ENP036		0.98	0.98		CAP**4221A**	0.97	0.93	58MVB080-14	CNPV*4221A**	1.00	0.92	58PH*110-20		
FV4BNB006		1.03	0.92		CNPV*4221A**	0.98	0.91	58MVB080-14	CSPH*4212A**	1.01	0.93	58PH*110-20		
FV4BNF002		0.98	0.94		CAP**3621A**	0.98	0.94	58MVB080-20	CAP**4224A**	0.98	0.94	58LVB040-14		
FV4BNF003		0.99	0.91		CAP**4221A**	0.99	0.95	58MVB080-20	CNPV*3617A**	0.98	0.94	58LVB060-14		
FV4BNF005		1.02	0.94		CAP**3621A**	0.98	0.91	58MVB100-20	CNPV*3617A**	0.98	0.94	58LVB060-14		
FX4CN(B)F036		1.01	0.97		CAP**4221A**	0.99	0.95	58MVB100-20	CAP**3621A**	0.98	0.94	58LVB080-14		
FX4CN(B)F042		1.02	0.94		CAP**4224A**	0.99	0.91	58MVB120-20	CAP**4221A**	0.98	0.94	58LVB080-14		
FY4ANF036		0.97	1.01		CSPH*4212A**	0.98	0.94	58MVB120-20	CNPV*3621A**	0.97	0.93	58LVB080-14		
FY4ANF042		1.01	1.05		CAP**3614A**	0.98	0.98	58PH*045-08	CNPV*4221A**	0.98	0.91	58LVB080-14		
CAP**3614A**		0.95	0.91		CNPV*3617A**	0.98	0.98	58PH*045-08	CAP**3621A**	0.98	0.94	58LVB080-20		
CNPV*3617A**		0.98	0.94		CNPV*4221A**	0.99	0.97	58PH*045-08	CAP**4221A**	0.99	0.95	58LVB080-20		
CNPV*4221A**		0.98	0.91		CSPH*3612A**	1.00	0.98	58PH*045-08	CAP**3621A**	0.98	0.91	58LVB100-20		
CNPV*3617A**		0.98	0.94		CSPH*4212A**	1.01	0.99	58PH*045-08	CAP**4221A**	0.99	0.95	58LVB100-20		
CSPH*3612A**		0.98	0.94		CNPV*4221A**	0.98	0.97	58PH*070-16	CAP**4224A**	0.99	0.91	58LVB100-20		
CSPH*4212A**		0.98	0.94		CNPV*3617A**	0.98	0.96	58PH*070-16	CAP**4224A**	0.99	0.91	58LVB120-20		
CAP**3617A**		0.98	0.94		CNPV*4221A**	0.99	0.95	58PH*070-16	CNPV*4221A**	0.99	0.95	58LVB120-20		

See notes on page 26

DETAILED COOLING CAPACITIES# (CONTINUED)

EVAPORATOR AIR		CONDENSER ENTERING AIR TEMPERATURES deg °F (°C)																																		
CFM	EWB °F (°C)	75 (23.9)					85 (29.4)					95 (35)					105 (40.6)					115 (46.1)					125 (51.7)									
		Capacity MBtuh		Total System KW	Capacity MBtuh		Total System KW	Capacity MBtuh		Total System KW	Capacity MBtuh		Total System KW	Capacity MBtuh		Total System KW	Capacity MBtuh		Total System KW	Capacity MBtuh		Total System KW	Capacity MBtuh		Total System KW	Capacity MBtuh		Total System KW								
		Total	Sens		Total	Sens		Total	Sens		Total	Sens		Total	Sens		Total	Sens		Total	Sens		Total	Sens		Total	Sens		Total	Sens	Total	Sens				
1225	72 (22.2)	51.84	27.33	2.27	49.61	26.48	2.54	47.23	25.58	2.84	44.68	24.63	3.17	41.93	23.62	3.54	38.86	22.51	3.93	35.58	20.87	4.32	33.47	19.47	4.70	30.07	18.17	5.08	26.67	16.87						
	67 (19.4)	47.48	33.63	2.26	45.42	32.76	2.83	43.24	31.85	3.16	40.90	30.89	3.54	38.37	29.87	3.93	35.58	28.75	4.32	33.47	27.49	4.70	30.07	26.19	5.08	26.67	24.89	5.46	23.28	23.59						
	62 (16.7)	43.52	39.88	2.25	41.66	38.99	2.82	39.71	38.06	2.82	37.49	37.03	3.15	35.60	35.60	3.52	33.47	33.47	3.92	30.07	30.07	3.92	27.49	27.49	4.32	24.89	24.89	4.70	22.51	22.51						
	57 (13.9)	42.32	42.32	2.24	40.83	40.83	2.82	39.23	39.23	2.82	37.49	37.49	3.15	35.60	35.60	3.52	33.47	33.47	3.92	30.07	30.07	3.92	27.49	27.49	4.32	24.89	24.89	4.70	22.51	22.51						
	52 (12.2)	52.87	28.72	2.28	50.55	27.98	2.85	48.06	26.94	2.85	45.41	25.98	3.18	42.56	24.95	3.55	39.39	23.93	3.94	36.11	23.93	4.32	33.47	22.51	4.70	30.07	21.59	5.08	18.17	16.87						
1400	72 (22.2)	48.46	35.83	2.27	46.31	34.94	2.84	44.04	34.02	2.84	41.60	33.04	3.17	39.05	32.01	3.53	36.95	30.87	3.93	34.67	29.87	4.32	33.47	28.75	4.70	30.07	27.49	5.08	26.67	24.89						
	67 (19.4)	44.62	42.86	2.26	42.72	41.91	2.83	40.81	40.81	2.83	38.97	38.97	3.16	36.95	36.95	3.53	34.67	34.67	3.93	30.07	30.07	3.93	27.49	27.49	4.32	24.89	24.89	4.70	22.51	22.51						
	62 (16.7)	44.15	44.15	2.25	42.54	42.54	2.83	40.83	40.83	2.83	38.97	38.97	3.16	36.95	36.95	3.53	34.67	34.67	3.93	30.07	30.07	3.93	27.49	27.49	4.32	24.89	24.89	4.70	22.51	22.51						
	57 (13.9)	44.15	44.15	2.25	42.54	42.54	2.83	40.83	40.83	2.83	38.97	38.97	3.16	36.95	36.95	3.53	34.67	34.67	3.93	30.07	30.07	3.93	27.49	27.49	4.32	24.89	24.89	4.70	22.51	22.51						
	52 (12.2)	53.67	30.04	2.29	51.27	29.16	2.86	48.70	28.24	2.86	45.17	27.26	3.18	42.17	26.23	3.55	39.79	25.09	3.95	36.54	25.09	4.32	33.47	24.89	4.70	30.07	21.59	5.08	18.17	16.87						
1575	72 (22.2)	49.22	37.92	2.27	47.00	37.03	2.85	44.66	36.10	2.85	42.17	35.11	3.18	39.49	34.06	3.54	36.54	32.08	3.94	34.67	32.08	4.32	33.47	28.75	4.70	30.07	27.49	5.08	26.67	24.89						
	67 (19.4)	45.61	45.61	2.27	43.95	43.95	2.84	42.14	42.14	2.84	40.17	40.17	3.17	38.04	38.04	3.54	35.64	35.64	3.94	32.08	32.08	4.32	33.47	30.07	4.70	30.07	27.49	5.08	26.67	24.89						
	62 (16.7)	45.61	45.61	2.27	43.95	43.95	2.84	42.14	42.14	2.84	40.17	40.17	3.17	38.04	38.04	3.54	35.64	35.64	3.94	32.08	32.08	4.32	33.47	30.07	4.70	30.07	27.49	5.08	26.67	24.89						
	57 (13.9)	45.61	45.61	2.27	43.95	43.95	2.84	42.14	42.14	2.84	40.17	40.17	3.17	38.04	38.04	3.54	35.64	35.64	3.94	32.08	32.08	4.32	33.47	30.07	4.70	30.07	27.49	5.08	26.67	24.89						
	52 (12.2)	48.65	45.65	2.27	43.95	43.95	2.84	42.14	42.14	2.84	40.17	40.17	3.17	38.04	38.04	3.54	35.64	35.64	3.94	32.08	32.08	4.32	33.47	30.07	4.70	30.07	27.49	5.08	26.67	24.89						
Cooling Indoor Model		Capacity					Power					Cooling Indoor Model					Capacity					Power					Furnace Model									
*CAP**4821A**		1.00					1.00					CAP**4224A**					0.98					58CV(A)X155-22					0.95					58MV(B)040-14				
CAP**4224A**		0.99					1.01					CAP**4824A**					1.00					58CV(A)X155-22					0.96					58MV(B)040-14				
CAP**4817A**		1.00					1.00					CNPH**4221A**					1.00					58CV(A)X155-22					0.92					58PH*070-16				
CAP**4824A**		1.00					1.00					CNPV**4824A**					1.00					58CV(A)X155-22					0.96					58PH*070-16				
CNPF**4818A**		1.00					1.00					CSPH**4212A**					0.99					58CV(A)X155-22					0.95					58PH*070-16				
CNPH**4221A**		0.99					1.01					CSPH**4812A**					1.00					58CV(A)X155-22					0.92					58PH*090-16				
CNPH**4821A**		1.00					1.00					CAP**4817A**					1.00					58MV(B)C060-14					0.98					58PH*090-16				
CNPV**4221A**		0.99					1.01					CNPH**4221A**					0.98					58MV(B)C060-14					0.94					58PH*090-16				
CNPV**4821A**		1.00					1.00					CNPH**4821A**					0.96					58MV(B)C060-14					0.94					58PH*090-16				
CNPV**4824A**		1.00					1.00					CSPH**4212A**					1.00					58MV(B)C060-14					0.95					58PH*090-16				
FEAN(B)F003		0.99					1.03					CAP**4221A**					0.99					58MV(B)C080-14					1.00					58PH*090-16				
FEAN(B)F005		1.03					0.95					CNPH**4221A**					0.96					58MV(B)C080-14					0.92					58PH*090-16				
FEAN(B)F003		1.03					0.95					CNPH**4221A**					0.96					58MV(B)C080-14					0.92					58PH*090-16				
FEAN(B)F005		1.03					0.95					CNPH**4221A**					0.96					58MV(B)C080-14					0.92					58PH*090-16				
FVABN(B)F003		1.03					0.91					CAP**4221A**					0.98					58MV(B)C080-14					0.95					58PH*110-20				
FVABN(B)F005		1.03					0.91					CAP**4221A**					0.98					58MV(B)C080-14					0.95					58PH*110-20				
FXACN(B)F042		1.01					0.97					CAP**4821A**					0.98					58MV(B)C080-14					0.93					58PH*110-20				
FXACN(B)F048		1.04					0.96					CAP**4821A**					0.97					58MV(B)C080-20					0.92					58PH*110-20				
FYAANF042		1.00					1.03					CNPH**4221A**					0.98					58MV(B)C080-20					1.01					58PH*110-20				
FYAANF048		1.01					1.04					CNPH**4821A**					0.96					58MV(B)C080-20					0.93					58PH*110-20				
GNPH**4221A**		0.98					1.03					CNPV**4221A**					0.98					58MV(B)C080-20					1.00					58PH*110-20				
GNPH**4821A**		1.00					0.98					CNPV**4821A**					0.98					58MV(B)C080-20					0.99					58PH*110-20				
GNPH**4212A**		0.99					1.03					CSPH**4212A**					0.98					58MV(B)C080-20					1.00					58PH*110-20				
GNPH**4812A**		1.00					0.97					CSPH**4212A**					0.98					58MV(B)C080-20					1.00					58PH*110-20				
GNPH**4824A**		1.00					0.96					CSPH**4812A**					0.97					58MV(B)C080-20					0.92					58PH*110-20				
GNPH**4212A**		1.00					1.03					CAP**4224A**					0.99					58MV(B)C080-20					0.93					58PH*110-20				
GNPH**4812A**		1.00					0.96					CAP**4824A**					0.96					58MV(B)C080-20					0.95					58PH*110-20				
GNPH**4824A**		1.00					0.95					CAP**4817A**					0.96					58MV(B)C080-20					0.93					58PH*110-20				
GNPH**4221A**		1.00					0.96					CAP**4221A**					0.98					58MV(B)C100-20					0.99					58PH*135-20				
GNPH**4821A**		1.00					0.95					CAP**4821A**					0.96					58MV(B)C100-20					0.95					58PH*135-20				
GNPH**4824A**		1.00					0.95					CAP**4817A**					0.96					58MV(B)C100-20					0.93					58PH*135-20				
GNPH**4212A**		1.00					0.96					CAP**4221A**					0.98					58MV(B)C100-20					0.99					58PH*135-20				
GNPH**4812A**		1.00					0.95					CAP**4821A**					0.96					58MV(B)C100-20					0.93					58PH*135-20				
GNPH**4824A**		1.00					0.95					CAP**4817A**					0.96					58MV(B)C100-20					0.93					58PH*135-20				
GNPH**4221A**		1.00					0.96					CAP**4221A**					0.98					58MV(B)C100-20					0.99					58PH*135-20				
GNPH**4821A**		1.00					0.95					CAP**4821A**					0.96					58MV(B)C100-20					0.93					58PH*135-20				
GNPH**4824A**		1.00					0.95					CAP**4817A**					0.96					58MV(B)C100-20					0.93					58PH*135-20				
GNPH**4212A**		1.00					0.96					CAP**4221A**					0.98					58MV(B)C100-20					0.99					58PH*135-20				
GNPH**4812A**		1.00					0.95					CAP**4821A**					0.96					58MV(B)C100-20					0.93					58PH*135-20				
GNPH**4824A**		1.00					0.95					CAP**4817A**					0.96					58MV(B)C100-20					0.93					58PH*135-20				
GNPH**4221A**		1.00					0.96					CAP**4221A**					0.98					58MV(B)C100-20					0.99					58PH*135-20				
GNPH**4821A**		1.00					0.95					CAP**4821A**					0.96					58MV(B)C100-20					0.93					58PH*135-20				
GNPH**4824A**		1.00					0.95					CAP**4817A**					0.96					58MV(B)C100-20					0.93					58PH*135-20				
GNPH**4212A**		1.00					0.96					CAP**4221A**					0.98					58MV(B)C100-20					0.99					58PH*135-20				
GNPH**4812A**		1.00					0.95					CAP**4821A**					0.96					58MV(B)C100-20					0.93					58PH*135-20				
GNPH**4824A**		1.00					0.95					CAP**4817A**					0.96					58MV(B)C100-20					0.93					58PH*135-20				
GNPH**4221A**		1.00					0.96					CAP**4221A**					0.98					58MV(B)C100-20					0.99					58PH*135-20				
GNPH**4821A**		1.00					0.95					CAP**4821A**					0.96					58MV(B)C100-20					0.93					58PH*135-20				
GNPH**4824A**		1.00					0.95					CAP**4817A**					0.96					58MV(B)C100-20					0.93					58PH*135-20				
GNPH**4212A**		1.00					0.96					CAP**4221A**																								

DETAILED COOLING CAPACITIES# (CONTINUED)

EVAPORATOR AIR		CONDENSER ENTERING AIR TEMPERATURES deg °F (°C)																	
CFM	EWB °F (°C)	75 (23.9)			85 (29.4)			95 (35)			105 (40.6)			115 (46.1)			125 (51.7)		
		Capacity MBtuht		Total System KW**	Capacity MBtuht		Total System KW**	Capacity MBtuht		Total System KW**	Capacity MBtuht		Total System KW**	Capacity MBtuht		Total System KW**	Capacity MBtuht		Total System KW**
		Total	Sens†		Total	Sens†		Total	Sens†		Total	Sens†		Total	Sens†		Total	Sens†	
1400	72 (22.2)	60.16	31.56	3.28	57.50	30.54	3.65	54.64	29.46	4.05	51.60	28.32	4.50	48.30	27.10	4.99	44.61	25.76	5.51
	67 (19.4)	55.07	38.75	3.27	52.61	37.72	3.64	50.00	36.62	4.05	47.20	35.47	4.49	44.18	34.24	4.98	40.83	32.90	5.51
	62 (16.7)	50.45	45.90	3.27	48.23	44.83	3.64	45.88	43.71	4.04	43.41	42.48	4.49	40.91	40.91	4.98	38.37	38.37	5.51
	57 (13.9)	48.92	48.92	3.27	47.14	47.14	3.63	45.23	45.23	4.04	43.17	43.17	4.49	40.91	40.91	4.98	38.37	38.37	5.51
	72 (22.2)	61.17	33.06	3.37	58.39	32.02	3.73	55.41	30.92	4.14	52.25	29.77	4.58	48.82	28.53	5.07	45.00	27.17	5.59
1600	67 (19.4)	56.03	41.17	3.36	53.46	40.12	3.72	50.73	39.00	4.13	47.83	37.84	4.57	44.70	36.59	5.06	41.24	35.22	5.59
	62 (16.7)	51.54	48.21	3.35	49.27	48.08	3.72	46.90	46.90	4.12	44.73	44.73	4.57	42.31	42.31	5.06	39.58	39.58	5.59
	57 (13.9)	50.90	50.90	3.35	48.89	48.89	3.72	46.94	46.94	4.12	44.73	44.73	4.57	42.31	42.31	5.06	39.58	39.58	5.59
	72 (22.2)	61.90	34.47	3.45	59.02	33.42	3.81	55.95	32.30	4.22	52.69	31.14	4.66	49.16	29.88	5.15	45.24	28.51	5.67
	67 (19.4)	56.72	43.47	3.44	54.07	42.40	3.80	51.26	41.28	4.21	48.28	40.10	4.66	45.07	38.82	5.14	41.52	37.41	5.67
1800	62 (16.7)	52.54	52.16	3.43	50.46	50.46	3.80	48.29	48.29	4.20	45.95	45.95	4.65	43.40	43.40	5.14	40.51	40.51	5.67
	57 (13.9)	52.49	52.49	3.43	50.46	50.46	3.80	48.29	48.29	4.20	45.96	45.96	4.65	43.40	43.40	5.14	40.52	40.52	5.67

Cooling Indoor Model		Capacity	Power	Furnace Model
*CAP**6024A**	1.00	1.00	0.94	58CV(A,X)135-22
CAP**4821A**	0.97	0.99	0.96	58CV(A,X)135-22
CAP**4824A**	0.99	1.02	0.98	58CV(A,X)135-22
CAP**6021A**	0.99	1.02	0.98	58CV(A,X)135-22
CAP**6024A**	0.98	0.98	0.94	58CV(A,X)155-22
CNPV*4818A**	0.95	0.97	0.92	58CV(A,X)155-22
CNPV*4821A**	0.97	0.99	0.96	58CV(A,X)155-22
CNPV*4824A**	0.97	0.99	0.96	58CV(A,X)155-22
CNPV*6024A**	0.97	0.99	0.96	58CV(A,X)155-22
CNPV*6021A**	0.97	0.99	0.96	58CV(A,X)155-22
CNPV*6024A**	0.98	0.99	0.93	58MV(B)080-20
CNPV*6021A**	0.97	0.99	0.93	58MV(B)080-20
CSPH*4812A**	0.97	0.99	0.93	58MV(B)080-20
CSPH*6012A**	0.97	0.99	0.93	58MV(B)080-20
FE4ANB006	1.01	0.93	0.92	58MV(B)080-20
FV4BNB006	1.01	0.93	0.92	58MV(B)080-20
FV4BNF005	1.00	0.92	0.92	58MV(B)080-20
FX4CN(B,F)048	1.01	0.97	0.92	58MV(B)080-20
FX4CN(B,F)060	1.03	0.95	0.92	58MV(B)080-20
FY4ANB060	1.01	1.01	0.95	58MV(B)080-20
FY4ANF048	0.99	1.02	0.91	58MV(B)080-20
CAP**4817A**	0.96	0.96	0.96	58CV(A,X)090-16
CNPV*4821A**	0.96	0.96	0.92	58CV(A,X)090-16
CNPV*6024A**	0.97	0.93	0.93	58CV(A,X)090-16
CNPV*4821A**	0.97	0.93	0.93	58CV(A,X)090-16
CSPH*4812A**	0.95	0.91	0.91	58CV(A,X)090-16
CSPH*6012A**	0.97	0.93	0.93	58CV(A,X)090-16
CAP**4821A**	0.97	0.93	0.93	58CV(A,X)110-20
CAP**6021A**	0.98	0.94	0.94	58CV(A,X)110-20
CNPV*4821A**	0.96	0.92	0.92	58CV(A,X)110-20

See notes on page 26

DETAILED COOLING CAPACITIES# (CONTINUED)

EVAPORATOR AIR		CONDENSER ENTERING AIR TEMPERATURES deg °F (°C)																																					
		75 (23.9)				85 (29.4)				95 (35)				105 (40.6)				115 (46.1)				125 (51.7)																	
		CFM	EWB °F (°C)	Capacity MBtuH†		Total System KW**	Capacity MBtuH†		Total System KW**	Capacity MBtuH†		Total System KW**	Capacity MBtuH†		Total System KW**	Capacity MBtuH†		Total System KW**	Capacity MBtuH†		Total System KW**	Capacity MBtuH†		Total System KW**															
Total	Sens†			Total	Sens†		Total	Sens†		Total	Sens†		Total	Sens†		Total	Sens†		Total	Sens†		Total	Sens†																
24ACA460A31 Outdoor Section With CAP**6024A** Indoor Section																																							
1750	72 (22.2)	70.52	37.08	3.97	67.20	35.81	4.38	63.70	34.48	4.83	59.99	33.10	5.32	55.97	31.62	5.86	51.51	30.01	6.45	1750	72 (22.2)	70.52	37.08	3.97	67.20	35.81	4.38	63.70	34.48	4.83	59.99	33.10	5.32	55.97	31.62	5.86	51.51	30.01	6.45
	67 (19.4)	64.33	45.47	3.92	61.31	44.20	4.28	58.13	42.87	4.78	54.75	41.49	5.27	51.12	40.02	5.82	47.11	38.42	6.40																				
	62 (16.7)	58.81	53.84	3.87	56.12	52.55	4.28	53.31	51.19	4.73	50.40	49.71	5.23	47.55	47.55	5.78	44.50	44.50	6.38																				
2000	72 (22.2)	72.67	40.54	4.17	69.08	39.23	4.58	65.29	37.86	5.03	61.30	36.43	5.52	57.00	34.90	6.06	52.25	33.24	6.64	2000	72 (22.2)	72.67	40.54	4.17	69.08	39.23	4.58	65.29	37.86	5.03	61.30	36.43	5.52	57.00	34.90	6.06	52.25	33.24	6.64
	67 (19.4)	66.34	51.06	4.12	63.07	49.75	4.53	59.64	48.38	4.98	56.04	46.94	5.47	52.17	45.40	6.01	47.92	43.68	6.60																				
	62 (16.7)	61.32	61.32	4.08	58.90	58.90	4.49	56.27	56.27	4.95	53.45	53.45	5.45	50.38	50.38	6.00	46.91	46.91	6.59																				
2250	72 (22.2)	71.76	38.86	4.07	68.28	37.57	4.43	64.63	36.22	4.93	60.76	34.81	5.43	56.59	33.31	5.96	51.97	31.67	6.55	2250	72 (22.2)	71.76	38.86	4.07	68.28	37.57	4.43	64.63	36.22	4.93	60.76	34.81	5.43	56.59	33.31	5.96	51.97	31.67	6.55
	67 (19.4)	65.49	48.34	4.02	62.33	47.04	4.43	59.00	45.69	4.88	55.50	44.28	5.37	51.73	42.78	5.92	47.58	41.13	6.50																				
	62 (16.7)	60.13	57.72	3.98	57.39	56.32	4.38	54.66	54.66	4.84	52.02	52.02	5.34	49.12	49.12	5.89	45.84	45.84	6.48																				
2500	72 (22.2)	72.67	40.54	4.17	69.08	39.23	4.58	65.29	37.86	5.03	61.30	36.43	5.52	57.00	34.90	6.06	52.25	33.24	6.64	2500	72 (22.2)	72.67	40.54	4.17	69.08	39.23	4.58	65.29	37.86	5.03	61.30	36.43	5.52	57.00	34.90	6.06	52.25	33.24	6.64
	67 (19.4)	66.34	51.06	4.12	63.07	49.75	4.53	59.64	48.38	4.98	56.04	46.94	5.47	52.17	45.40	6.01	47.92	43.68	6.60																				
	62 (16.7)	61.32	61.32	4.08	58.90	58.90	4.49	56.27	56.27	4.95	53.45	53.45	5.45	50.38	50.38	6.00	46.91	46.91	6.59																				

Cooling Indoor Model	Capacity	Power	Furnace Model	Cooling Indoor Model	Capacity	Power	Furnace Model	Cooling Indoor Model	Capacity	Power	Furnace Model	Cooling Indoor Model	Capacity	Power	Furnace Model
*CAP**6024A**	1.00	1.00		CNPV*6024A**	0.97	0.97	56CV(A)135-22	CNPV*6024A**	0.97	0.97	56CV(A)135-22	CNPV*6024A**	0.95	0.95	58MVB120-20
CAP**6021A**	0.98	1.03		CSPH*6012A**	0.97	0.97	58CV(A)135-22	CSPH*6012A**	0.97	0.97	58CV(A)135-22	CSPH*6012A**	0.97	0.96	58PH*090-16
CNPV*6024A**	0.98	0.98		CAP**6024A**	0.98	0.98	58CV(A)155-22	CAP**6024A**	0.98	0.98	58CV(A)155-22	CNPV*6024A**	0.97	0.97	58PH*090-16
CNPV*6024A**	0.98	0.98		CNPV*6024A**	0.98	0.98	58CV(A)155-22	CNPV*6024A**	0.98	0.98	58CV(A)155-22	CNPV*6024A**	0.97	0.96	58PH*090-16
CSPH*6012A**	0.98	0.98		CNPV*6024A**	0.98	0.98	58CV(A)155-22	CNPV*6024A**	0.98	0.98	58CV(A)155-22	CNPV*6024A**	0.97	0.96	58PH*110-20
FE4ANB006	1.00	0.96		CSPH*6012A**	0.98	0.98	58CV(A)155-22	CSPH*6012A**	0.98	0.98	58CV(A)155-22	CNPV*6024A**	0.97	0.96	58PH*110-20
FV4ANB006	1.00	0.96		CAP**6021A**	0.94	0.94	58MVB080-20	CAP**6021A**	0.94	0.94	58MVB080-20	CSPH*6012A**	0.98	0.97	58PH*110-20
FX4CNB FJ060	1.01	1.01		CNPV*6024A**	0.94	0.94	58MVB080-20	CNPV*6024A**	0.94	0.94	58MVB080-20	CAP**6024A**	0.97	0.96	58PH*135-20
FY4ANB060	1.00	1.04		CSPH*6012A**	0.95	0.95	58MVB080-20	CSPH*6012A**	0.95	0.95	58MVB080-20	CNPV*6024A**	0.97	0.96	58PH*135-20
CNPV*6024A**	0.97	0.97	58CV(A)110-20	CNPV*6024A**	0.94	0.94	58MVB100-20	CNPV*6024A**	0.94	0.94	58MVB100-20	CNPV*6024A**	0.97	0.96	58PH*135-20
CNPV*6024A**	0.97	0.97	58CV(A)110-20	CNPV*6024A**	0.95	0.95	58MVB100-20	CNPV*6024A**	0.95	0.95	58MVB100-20	CNPV*6024A**	0.97	0.96	58PH*135-20
CSPH*6012A**	0.97	0.97	58CV(A)110-20	CNPV*6024A**	0.94	0.94	58MVB120-20	CNPV*6024A**	0.94	0.94	58MVB120-20	CNPV*6024A**	0.97	0.96	58PH*135-20
CAP**6024A**	0.98	0.98	58CV(A)135-22	CNPV*6024A**	0.94	0.94	58MVB120-20	CNPV*6024A**	0.94	0.94	58MVB120-20	CNPV*6024A**	0.94	0.94	58PH*135-20
CNPV*6024A**	0.97	0.97	58CV(A)135-22	CNPV*6024A**	0.94	0.94	58MVB120-20	CNPV*6024A**	0.94	0.94	58MVB120-20	CNPV*6024A**	0.94	0.94	58PH*135-20

† Total and sensible capacities are net capacities. Blower motor heat has been subtracted.
 ‡ Sensible capacities shown are based on 80°F (27°C) entering air at the indoor coil. For sensible capacities at other than 80°F (27°C), deduct 835 BtuH (245 kW) per 1000 CFM (480 L/S) of indoor coil air for each degree below 80°F (27°C), or add 835 BtuH (245 kW) per 1000 CFM (480 L/S) of indoor coil air per degree above 80°F (27°C).
 # Detailed cooling capacities are based on indoor and outdoor unit at the same elevation per ARI standard 210/240-94. If additional tubing length and/or indoor unit is located above outdoor unit, a slight variation in capacity may occur.
 ** System kw is total of indoor and outdoor unit kilowatts.
 EWB — Entering Wet Bulb
NOTE: When the required data fall between the published data, interpolation may be performed. Extrapolation is not an acceptable practice.

CONDENSER ONLY RATINGS*

SST		CONDENSER ENTERING AIR TEMPERATURES °F (°C)							
°F (°C)		55 (12.78)	65 (18.33)	75 (23.89)	85 (29.44)	95 (35.0)	105 (40.56)	115 (46.11)	125 (51.67)
24ACA418A31									
30	TCG	16.80	15.70	14.70	13.80	12.80	11.80	10.80	9.70
	SDT	66.70	76.10	85.40	94.80	104.30	113.70	123.20	132.70
	KW	0.78	0.90	1.03	1.18	1.34	1.53	1.72	1.94
35	TCG	18.60	17.40	16.40	15.30	14.20	13.20	12.00	10.90
	SDT	67.90	77.10	86.40	95.80	105.10	114.50	124.00	133.40
	KW	0.77	0.89	1.02	1.17	1.34	1.52	1.72	1.94
40	TCG	20.50	19.30	18.10	16.90	15.80	14.60	13.40	12.10
	SDT	69.10	78.30	87.50	96.80	106.10	115.40	124.80	134.10
	KW	0.76	0.88	1.01	1.16	1.33	1.51	1.72	1.94
45	TCG	22.60	21.30	20.00	18.70	17.40	16.10	14.80	13.40
	SDT	70.40	79.50	88.60	97.80	107.00	116.30	125.60	134.90
	KW	0.74	0.86	1.00	1.15	1.32	1.50	1.71	1.94
50	TCG	24.80	23.40	22.00	20.60	19.20	17.80	16.30	14.80
	SDT	71.80	80.70	89.80	98.90	108.00	117.20	126.40	135.60
	KW	0.73	0.85	0.99	1.14	1.31	1.49	1.70	1.93
55	TCG	27.20	25.60	24.10	22.50	21.00	19.40	17.90	33.70
	SDT	73.20	82.10	91.00	100.10	109.10	118.20	127.30	130.60
	KW	0.72	0.84	0.98	1.13	1.30	1.48	1.69	1.77
24ACA424A32									
30	TCG	20.90	19.70	18.60	17.40	16.20	15.00	13.70	12.40
	SDT	66.60	76.10	85.60	95.10	104.70	114.20	123.80	133.40
	KW	0.99	1.14	1.30	1.48	1.68	1.90	2.14	2.40
35	TCG	23.00	21.80	20.60	19.30	18.00	16.70	15.30	13.80
	SDT	67.70	77.10	86.60	96.00	105.50	115.00	124.60	134.10
	KW	1.00	1.14	1.30	1.48	1.68	1.90	2.15	2.41
40	TCG	25.40	24.00	22.70	21.30	19.90	18.50	17.00	15.40
	SDT	68.80	78.20	87.60	97.00	106.40	115.80	125.30	134.80
	KW	1.00	1.14	1.30	1.48	1.69	1.91	2.15	2.42
45	TCG	27.80	26.40	24.90	23.50	22.00	20.40	18.80	17.10
	SDT	70.00	79.30	88.60	98.00	107.30	116.70	126.10	135.60
	KW	1.00	1.14	1.31	1.49	1.69	1.91	2.15	2.42
50	TCG	30.50	29.00	27.40	25.80	24.20	22.50	20.80	18.90
	SDT	71.30	80.50	89.80	99.00	108.30	117.60	127.00	136.30
	KW	1.00	1.15	1.31	1.49	1.69	1.91	2.16	2.43
55	TCG	33.40	31.70	30.00	28.30	26.50	24.70	22.90	20.90
	SDT	72.60	81.80	90.90	100.10	109.30	118.60	127.80	137.10
	KW	1.01	1.15	1.31	1.49	1.69	1.92	2.16	2.43
24ACA430A32									
30	TCG	27.40	25.90	24.50	22.90	21.30	19.70	18.00	16.20
	SDT	68.50	77.80	87.20	96.60	106.00	115.40	124.90	134.30
	KW	1.25	1.43	1.63	1.85	2.09	2.35	2.63	2.93
35	TCG	30.20	28.60	27.00	25.30	23.60	21.90	20.00	18.00
	SDT	69.70	78.90	88.30	97.60	106.90	116.30	125.70	135.00
	KW	1.26	1.43	1.63	1.85	2.10	2.36	2.65	2.95
40	TCG	33.10	31.40	29.70	27.90	26.00	24.10	22.20	20.10
	SDT	70.90	80.10	89.40	98.60	107.90	117.20	126.50	135.80
	KW	1.26	1.44	1.64	1.86	2.10	2.37	2.66	2.97
45	TCG	36.20	34.40	32.50	30.60	28.60	26.50	24.40	22.10
	SDT	72.20	81.30	90.50	99.70	108.90	118.20	127.40	136.60
	KW	1.27	1.44	1.64	1.86	2.11	2.38	2.67	2.98
50	TCG	39.60	37.60	35.50	33.40	31.20	29.00	26.70	24.20
	SDT	73.60	82.60	91.70	100.90	110.00	119.20	128.30	137.40
	KW	1.27	1.45	1.65	1.87	2.12	2.39	2.68	3.00
55	TCG	43.00	40.80	38.60	36.30	33.90	31.50	29.00	26.40
	SDT	75.00	84.00	93.00	102.00	111.10	120.20	129.20	138.20
	KW	1.28	1.46	1.66	1.88	2.12	2.39	2.69	3.00

24ACA4

See notes on page 29

CONDENSER ONLY RATINGS* (CONT.)

SST		CONDENSER ENTERING AIR TEMPERATURES °F (°C)							
°F (°C)		55 (12.78)	65 (18.33)	75 (23.89)	85 (29.44)	95 (35.0)	105 (40.56)	115 (46.11)	125 (51.67)
24ACA436A31									
30	TCG	32.80	31.50	29.80	28.00	26.20	24.30	22.30	20.70
	SDT	67.90	77.60	87.10	96.60	106.00	115.40	124.80	134.20
	KW	1.41	1.73	1.98	2.25	2.53	2.85	3.20	3.45
35	TCG	36.10	34.90	33.00	31.10	29.10	27.00	24.80	22.70
	SDT	69.00	78.70	88.10	97.60	106.90	116.30	125.60	134.90
	KW	1.36	1.73	1.98	2.25	2.54	2.86	3.20	3.54
40	TCG	39.70	38.40	36.40	34.30	32.30	30.00	27.60	25.00
	SDT	70.10	79.90	89.20	98.50	107.90	117.20	126.50	135.60
	KW	1.31	1.72	1.97	2.25	2.54	2.86	3.21	3.63
45	TCG	43.50	42.30	40.10	37.90	35.50	33.20	30.50	26.40
	SDT	71.20	81.10	90.30	99.60	108.90	118.10	127.30	136.10
	KW	1.23	1.71	1.97	2.24	2.54	2.86	3.22	3.85
50	TCG	42.40	46.50	44.00	41.60	39.00	36.30	33.50	29.40
	SDT	70.90	82.40	91.50	100.70	109.90	119.00	128.20	137.00
	KW	1.21	1.74	1.96	2.24	2.54	2.87	3.24	3.84
55	TCG	47.20	50.80	48.20	45.50	42.70	39.80	36.70	32.40
	SDT	72.30	83.70	92.80	101.90	111.00	120.00	129.10	137.80
	KW	1.07	1.72	1.96	2.24	2.54	2.87	3.24	3.82
24ACA442A32									
30	TCG	36.60	34.70	32.80	30.80	28.70	26.60	24.30	21.90
	SDT	67.50	76.90	86.30	95.70	105.10	114.60	124.00	133.30
	KW	1.80	2.03	2.28	2.56	2.86	3.20	3.57	3.96
35	TCG	40.30	38.20	36.10	34.00	31.70	29.40	26.90	24.30
	SDT	68.60	78.00	87.30	96.70	106.10	115.40	124.80	134.10
	KW	1.81	2.04	2.29	2.56	2.87	3.21	3.58	3.98
40	TCG	44.20	41.90	39.70	37.30	34.90	32.30	29.70	26.80
	SDT	69.90	79.10	88.40	97.70	107.00	116.40	125.60	134.80
	KW	1.83	2.05	2.30	2.57	2.88	3.22	3.60	4.00
45	TCG	48.30	45.90	43.40	40.90	38.20	35.50	32.60	29.40
	SDT	71.20	80.30	89.60	98.80	108.10	117.30	126.50	135.60
	KW	1.84	2.06	2.31	2.59	2.90	3.24	3.61	4.01
50	TCG	52.80	50.10	47.40	44.60	41.80	38.70	35.60	32.10
	SDT	72.60	81.60	90.80	100.00	109.10	118.30	127.40	136.40
	KW	1.85	2.07	2.32	2.60	2.91	3.25	3.62	4.02
55	TCG	57.50	54.60	51.60	48.60	45.40	42.10	38.70	34.90
	SDT	74.00	83.00	92.10	101.20	110.30	119.30	128.30	137.20
	KW	1.87	2.09	2.34	2.61	2.92	3.26	3.63	4.03
24ACA448A31									
30	TCG	45.60	43.20	40.70	38.20	35.70	32.90	30.10	27.10
	SDT	70.10	79.20	88.50	97.70	107.00	116.30	125.50	134.70
	KW	2.12	2.41	2.74	3.11	3.51	3.95	4.42	4.93
35	TCG	50.10	47.50	44.90	42.20	39.30	36.40	33.30	30.00
	SDT	71.50	80.60	89.70	98.90	108.10	117.30	126.50	135.60
	KW	2.13	2.42	2.75	3.11	3.52	3.96	4.44	4.95
40	TCG	55.00	52.10	49.30	46.30	43.20	40.00	36.60	33.00
	SDT	73.00	82.00	91.10	100.20	109.30	118.40	127.50	136.50
	KW	2.14	2.43	2.76	3.12	3.53	3.97	4.45	4.97
45	TCG	60.10	57.00	53.90	50.70	47.30	43.80	40.10	36.20
	SDT	74.60	83.50	92.50	101.50	110.50	119.50	128.50	137.40
	KW	2.15	2.44	2.77	3.13	3.54	3.98	4.46	4.98
50	TCG	65.60	62.20	58.80	55.20	51.60	47.70	43.70	39.40
	SDT	76.20	85.10	93.90	102.90	111.80	120.70	129.60	138.30
	KW	2.16	2.45	2.78	3.14	3.55	3.99	4.47	4.99
55	TCG	71.30	67.70	63.90	60.00	56.00	51.80	47.40	42.70
	SDT	78.00	86.70	95.50	104.30	113.10	121.90	130.70	139.30
	KW	2.18	2.47	2.79	3.16	3.56	4.00	4.48	5.00

24ACA4

See notes on page 29

CONDENSER ONLY RATINGS* (CONT.)

SST		CONDENSER ENTERING AIR TEMPERATURES °F (°C)							
°F (°C)		55 (12.78)	65 (18.33)	75 (23.89)	85 (29.44)	95 (35.0)	105 (40.56)	115 (46.11)	125 (51.67)
24ACA460A31									
30	TCG	54.70	51.70	48.70	45.70	42.60	39.50	36.20	32.70
	SDT	72.50	81.40	90.40	99.40	108.50	117.60	126.70	135.80
	KW	2.46	2.78	3.14	3.53	3.97	4.46	4.99	5.57
35	TCG	60.20	57.00	53.80	50.50	47.10	43.60	40.00	36.10
	SDT	74.20	83.00	91.90	100.80	109.80	118.80	127.80	136.80
	KW	2.50	2.82	3.18	3.57	4.01	4.50	5.03	5.61
40	TCG	66.20	62.70	59.10	55.50	51.80	48.00	44.00	39.70
	SDT	76.00	84.70	93.40	102.30	111.20	120.10	128.90	137.80
	KW	2.55	2.86	3.22	3.62	4.06	4.54	5.07	5.65
45	TCG	72.60	68.70	64.90	60.90	56.80	52.60	48.20	43.40
	SDT	77.90	86.50	95.10	103.80	112.60	121.40	130.10	138.80
	KW	2.59	2.91	3.27	3.66	4.10	4.59	5.11	5.68
50	TCG	79.40	75.20	70.90	66.60	62.10	57.40	52.60	47.30
	SDT	79.90	88.30	96.90	105.50	114.10	122.80	131.40	139.90
	KW	2.65	2.96	3.32	3.72	4.15	4.63	5.16	5.73
55	TCG	86.60	82.00	77.30	72.50	67.60	62.50	57.20	51.40
	SDT	82.10	90.40	98.70	107.20	115.70	124.20	132.70	141.10
	KW	2.71	3.02	3.38	3.77	4.21	4.69	5.21	5.77

* ARI listing applies only to systems shown in Combination Ratings table.

KW – Outdoor Unit Kilowatts Only.

SDT – Saturated Temperature Leaving Compressor (°F/°C)

SST – Saturated Temperature Entering Compressor (°F/°C)

TCG – Gross Cooling Capacity (1000 Btuh)

24ACA4

GUIDE SPECIFICATIONS

GENERAL

System Description

Outdoor-mounted, air-cooled, split-system air conditioner unit suitable for ground or rooftop installation. Unit consists of a hermetic compressor, an air-cooled coil, propeller-type condenser fan, and a control box. Unit will discharge supply air upward as shown on contract drawings. Unit will be used in a refrigeration circuit to match up to a packaged fan coil or coil unit.

Quality Assurance

- Unit will be rated in accordance with the latest edition of ARI Standard 210.
- Unit will be certified for capacity and efficiency, and listed in the latest ARI directory.
- Unit construction will comply with latest edition of ANSI/ASHRAE and with NEC.
- Unit will be constructed in accordance with UL standards and will carry the UL label of approval. Unit will have c-UL approval.
- Unit cabinet will be capable of withstanding Federal Test Method Standard No. 141 (Method 6061) 500-hr salt spray test.
- Air-cooled condenser coils will be leak tested and pressure tested.
- Unit constructed in ISO9001 approved facility.

Delivery, Storage, and Handling

- Unit will be shipped as single package only and is stored and handled per unit manufacturer's recommendations.

Warranty (for inclusion by specifying engineer)

- U.S. and Canada only.

PRODUCTS

Equipment

- Factory assembled, single piece, air-cooled air conditioner unit. Contained within the unit enclosure is all factory wiring, piping, controls, compressor, refrigerant charge Puron® (R-410A), and special features required prior to field start-up.

Unit Cabinet

- Unit cabinet, including louvered coil guard, will be constructed of galvanized steel, bonderized, and coated with a powder coat paint.

Fans

- Condenser fan will be direct-drive propeller type, discharging air upward.

AIR-COOLED, SPLIT-SYSTEM AIR CONDITIONER

24ACA4

1-1/2 TO 5 NOMINAL TONS

- Condenser fan motors will be totally enclosed, 1-phase type with class B insulation and permanently lubricated bearings. Shafts will be corrosion resistant.
- Fan blades will be statically and dynamically balanced.
- Condenser fan openings will be equipped with coated steel wire safety guards.

Compressor

- Compressor will be hermetically sealed.
- Compressor will be mounted on rubber vibration isolators.
- Compressor will be covered with a sound absorbing blanket.

Condenser Coil

- Condenser coil will be air cooled.
- Coil will be constructed of aluminum fins mechanically bonded to copper tubes which are then cleaned, dehydrated, and sealed.

Refrigeration Components

- Refrigeration circuit components will include liquid-line shutoff valve with sweat connections, vapor-line shutoff valve with sweat connections, system charge of Puron® (R-410A) refrigerant, and compressor oil.
- Unit will be equipped with high-pressure switch, low pressure switch and filter drier for Puron refrigerant.

Operating Characteristics

- The capacity of the unit will meet or exceed _____ Btuh at a suction temperature of _____ °F/°C. The power consumption at full load will not exceed _____ kW.
- Combination of the unit and the evaporator or fan coil unit will have a total net cooling capacity of _____ Btuh or greater at conditions of _____ CFM entering air temperature at the evaporator at _____ °F/°C wet bulb and _____ °F/°C dry bulb, and air entering the unit at _____ °F/°C.
- The system will have a SEER of _____ Btuh/watt or greater at DOE conditions.

Electrical Requirements

- Nominal unit electrical characteristics will be _____ v, single phase, 60 hz. The unit will be capable of satisfactory operation within voltage limits of _____ v to _____ v.
- Unit electrical power will be single point connection.
- Control circuit will be 24v.

Special Features

- Refer to section of this literature identifying accessories and descriptions for specific features and available enhancements.

