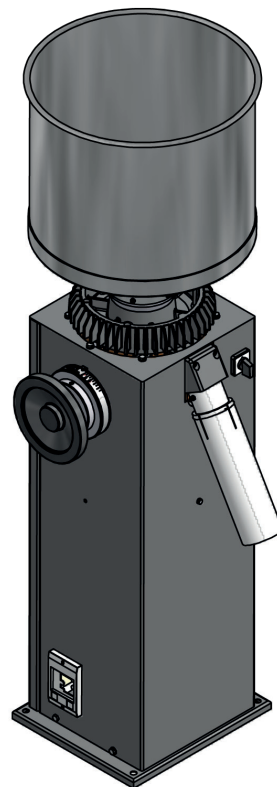
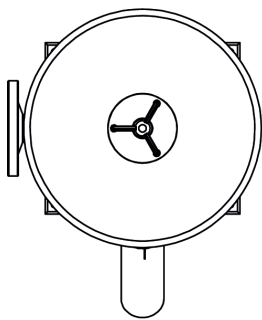
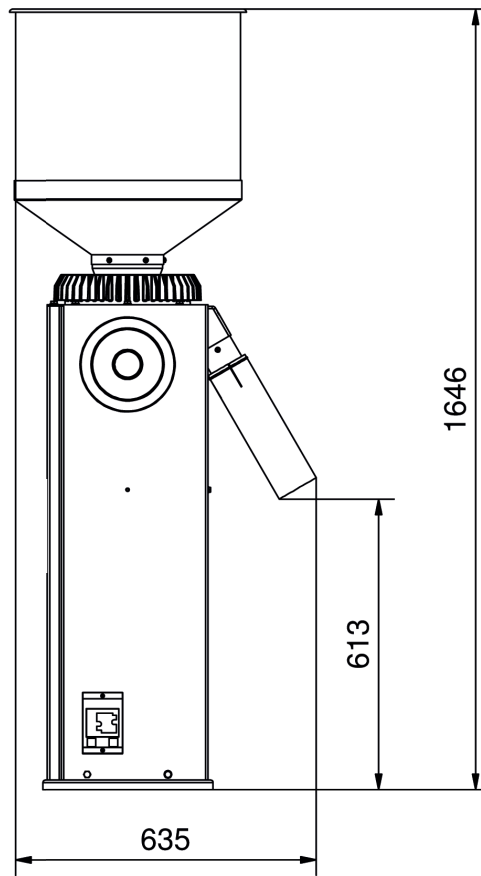
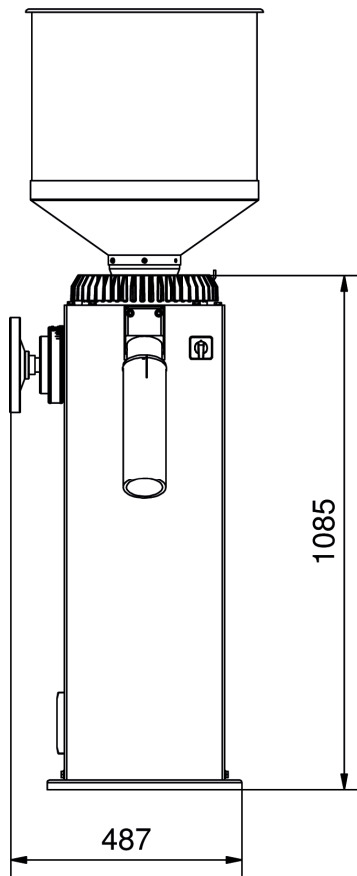




ERSATZTEILLISTE | SPARE PARTS LIST

KF 1800 220-240 V 50Hz | KF 1800 220 V 60 Hz
 KF 1800 380-415 V 50/60 Hz



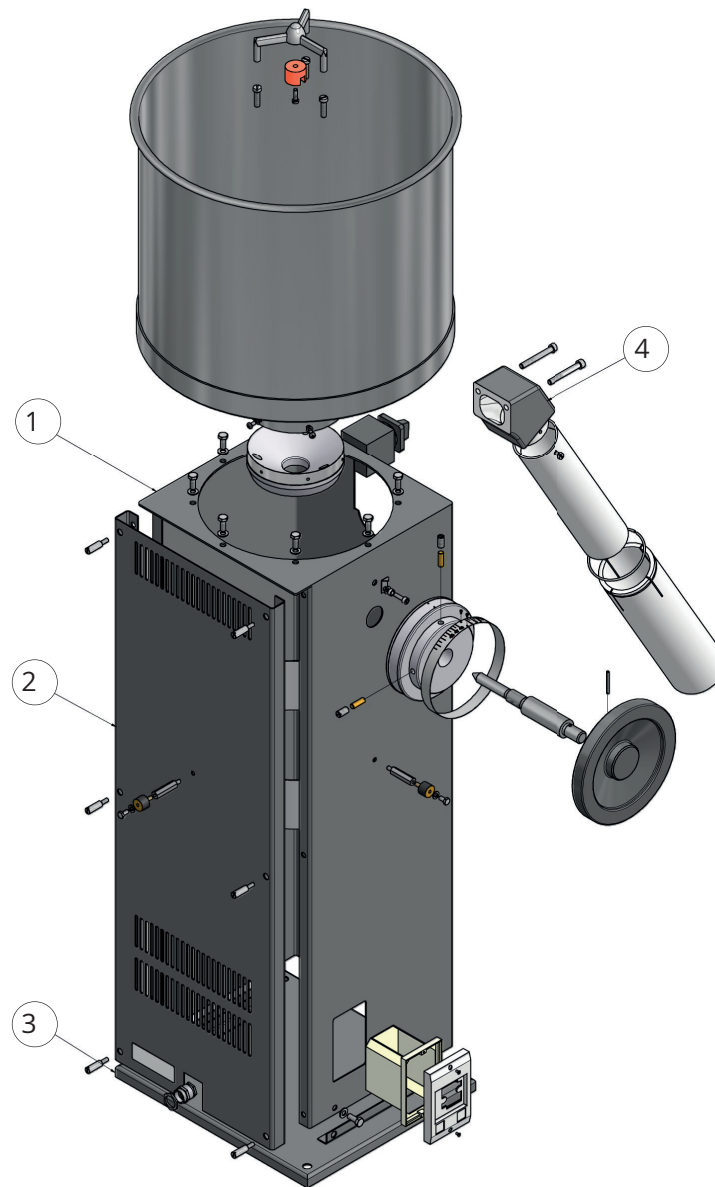
gültig ab | valid from
 2018-11-27

Änderungen ohne Vorankündigung vorbehalten. | Subject to change without prior notice.



ERSATZTEILLISTE | SPARE PARTS LIST

KF 1800 220-240 V 50Hz | KF 1800 220 V 60 Hz
 KF 1800 380-415 V 50/60 Hz



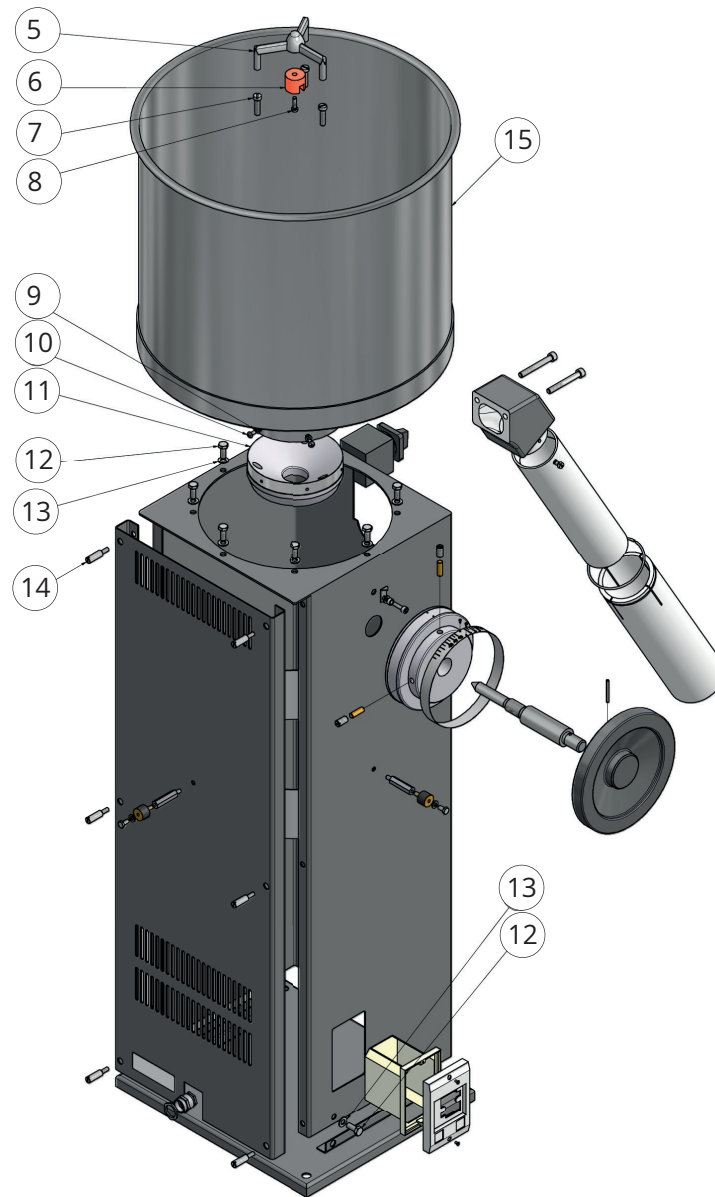
KF 1800

| MATERIAL | POS. | BESCHREIBUNG | DESCRIPTION |
|----------|------|-------------------------------|---|
| 100995 | 1 | Blechgehäuse, Farbe anthrazit | Housing panel, anthrazit colour |
| 104930 | (1) | Blechgehäuse, Farbe schwarz | Housing panel, black colour |
| 100996 | 2 | Rückwand, Farbe anthrazit | Housing panel, backside, anthrazit colour |
| 104931 | (2) | Rückwand, Farbe schwarz | Housing panel, backside, black colour |
| 104832 | 3 | Fussplatte, Farbe anthrazit | Bottom plate, anthrazit colour |
| 104935 | (3) | Fussplatte, Farbe schwarz | Bottom plate, black colour |
| 243358 | 4 | Ausguss, Farbe anthrazit | Discharge, anthrazit colour |
| 104935 | (4) | Ausguss, Farbe schwarz | Discharge, black colour |



ERSATZTEILLISTE | SPARE PARTS LIST

KF 1800 220-240 V 50Hz | KF 1800 220 V 60 Hz
 KF 1800 380-415 V 50/60 Hz



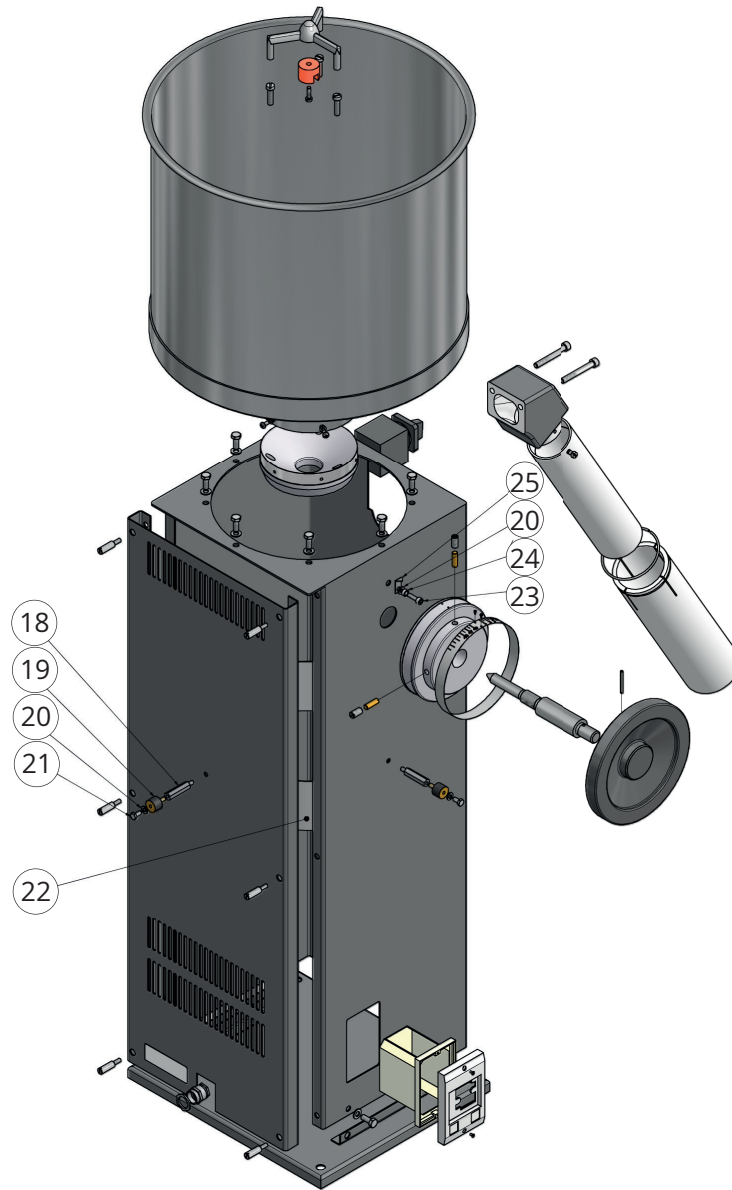
KF 1800

| MATERIAL | POS. | BESCHREIBUNG | DESCRIPTION |
|----------|------|--|--|
| 230026 | 5 | Magnetträger | Magnet holder |
| 101724 | 6 | Ringmagnet HF 24/16 Nacharbeit D31/d6.3 | Ring-magnet HF 24/16 refinished D31/d6.3 |
| 250402 | 7 | Zyl-Schraube ISO 1207-M8x30 verzinkt, 3x | Screw ISO 1207-M8x30 zinced, 3x |
| 101725 | 8 | Se-Schr ISO 2009-M6x25 A2 | Screw ISO 2009-M6x25 A2 |
| 251517 | 9 | Rip-Lock M5 Geomet 500, 6x | Washer M5 Geomet 500, 6x |
| 250431 | 10 | Ls-Schraube ISO 7045-M5x10 Ks H verzinkt, 6x | Screw ISO 7045-M5x10 Ks H zinced, 6x |
| 100967 | 11 | Flansch 1800 | Flange 1800 |
| 250319 | 12 | 6kt-Schraube ISO 4017-M8x20, 8.8 verzinkt, 12x | Screw ISO 4017-M8x20, 8.8 zinced, 12x |
| 251536 | 13 | Rip-Lock M8 Geomet 500, 15x | Washer M8 Geomet 500, 15x |
| 240310 | 14 | Schaftschraube, 6x | Headless screw, 6x |
| 210039 | 15 | Trichter | Hopper |



ERSATZTEILLISTE | SPARE PARTS LIST

KF 1800 220-240 V 50Hz | KF 1800 220 V 60 Hz
 KF 1800 380-415 V 50/60 Hz



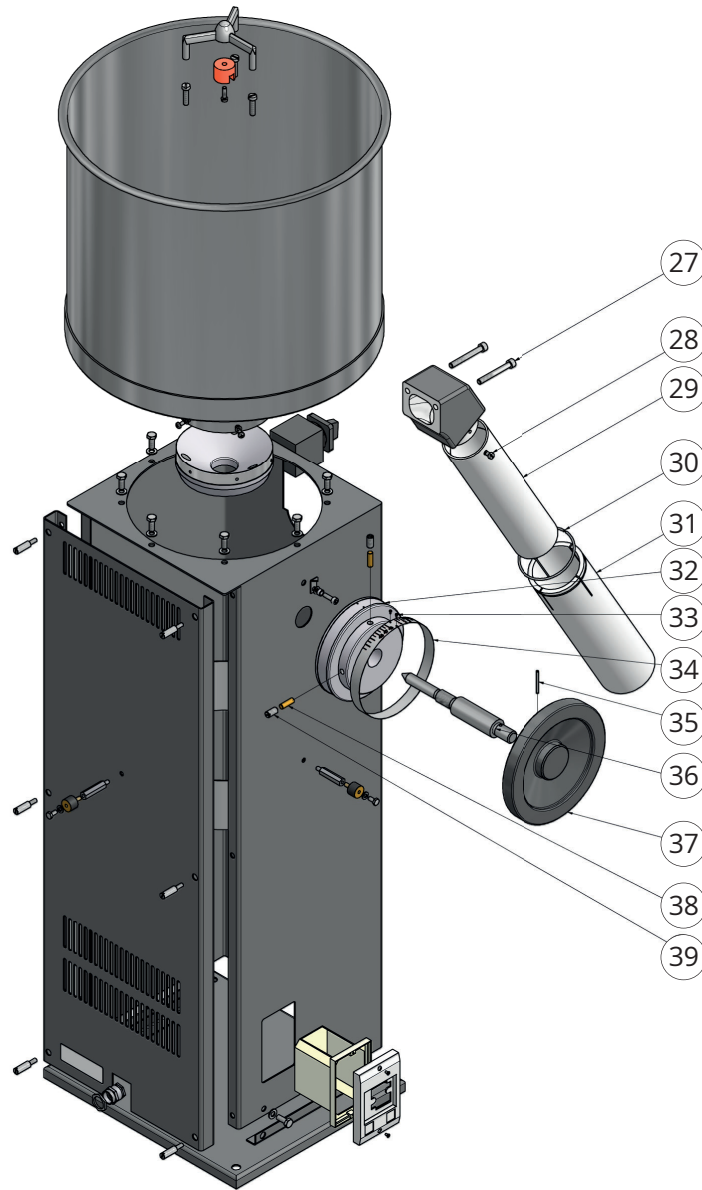
KF 1800

| MATERIAL | POS. | BESCHREIBUNG | DESCRIPTION |
|----------|------|---|---|
| 240312 | 18 | Stehbolzen, x4 | Stud bolt, x4 |
| 255702 | 19 | Gummipuffer 20x15/M6 Typ B NK 60 Shore, 4x | Rubber joint 20x15/M6 Typ B NK 60 Shore, 4x |
| 251518 | 20 | Rip-Lock M6 Geomet 500, 5x | Washer M6 Geomet 500, 5x |
| 250308 | 21 | 6kt-Schraube ISO 4017-M6x10 verzinkt, 4x | Screw ISO 4017-M6x10 zincked, x4 |
| 230025 | 22 | Ventilatorring | Ventilation drain |
| 250001 | 23 | Zyl-Schraube In-6kt ISO 4762 M6x20 verzinkt | Screw In-6kt ISO 4762 M6x20 zincked |
| 240314 | 24 | Distanzbüchse | Spacer |
| 240313 | 25 | Zeiger | Indicator |



ERSATZTEILLISTE | SPARE PARTS LIST

KF 1800 220-240 V 50Hz | KF 1800 220 V 60 Hz
 KF 1800 380-415 V 50/60 Hz



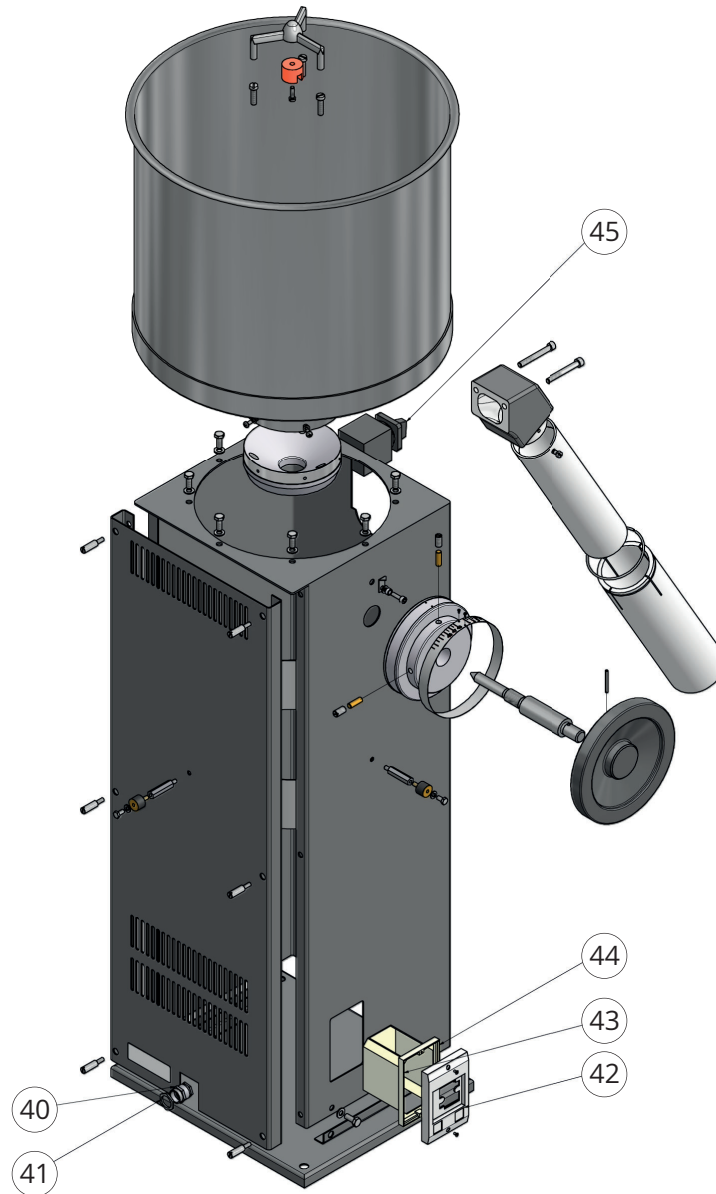
KF 1800

| MATERIAL | POS. | BESCHREIBUNG | DESCRIPTION |
|----------|------|---|---|
| 250004 | 27 | Zyl-Schraube In-6kt ISO 4762-M8x65-8.8 verzinkt, 7x | Screw In-6kt ISO 4762-M8x65-8.8 zincked, 7x |
| 250419 | 28 | Zyl-Schraube ISO 1207-M6x8 verzinkt, 2x | Screw ISO 1207-M6x8 zincked, 2x |
| 240366 | 29 | Ausgussrohr | Discharge tube |
| 252003 | 30 | Sprengring D85 DIN 7993 A, Farbe schwarz, 2x | Snap ring D85 DIN 7993 A, black colour 2x |
| 230077 | 31 | Schieberohr | Sliding discharge tube |
| 230028 | 32 | Skalaring | Scale ring |
| 250915 | 33 | Blechschraube 2.2x4.5 DIN 7971C verzinkt, 2x | Screw 2.2x4.5 DIN 7971C zincked, 2x |
| 240308 | 34 | Skala | Graduation dial |
| 254402 | 35 | Schwerspannstift 4x38 VSM 12785 | Pin 4x38 VSM 12785 |
| 230027 | 36 | Konuswelle | Adjusting cone |
| 240307 | 37 | Handrad | Handwheel |
| 240614 | 38 | Stift, 2x | Pin, 2x |
| 250701 | 39 | Gew-Stift ISO 4766-M10x20 verzinkt, 2x | Grub screw ISO 4766-M10x20 zincked, 2x |



ERSATZTEILLISTE | SPARE PARTS LIST

KF 1800 220-240 V 50Hz | KF 1800 220 V 60 Hz
 KF 1800 380-415 V 50/60 Hz



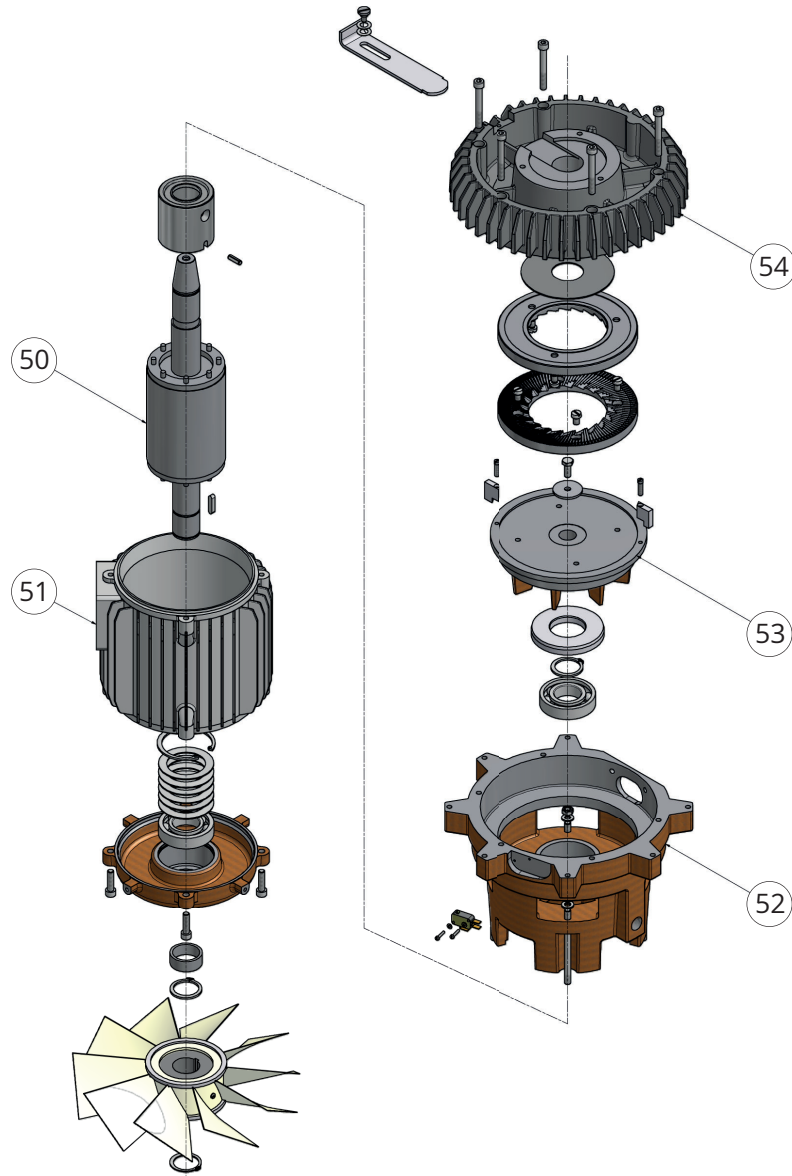
KF 1800

| MATERIAL | POS. | BESCHREIBUNG | DESCRIPTION |
|------------------------|------|--|---|
| 256913 | 40 | Stopfbuchse | Cable screw joint |
| 256914 | 41 | Gegenmutter PG 16 | Nut PG 16 |
| 257107 | 42 | Schalergehäuse | Switch housing |
| 257106 | 43 | Geräteschutzschalter 10-16A (380-415 V 50/60 Hz) | Overcurrent protector 10-16A (380-415 V 50/60 Hz) |
| 257108 | 43 | Geräteschutzschalter 16-20A (220-240 V 50/60 Hz) | Overcurrent protector 16-20A (220-240 V 50/60 Hz) |
| 257119 | 44 | Unterspannungsauslöser (380-415 V 50/60 Hz) | Interrupter (380-415 V 50/60 Hz) |
| 257120 | 44 | Unterspannungsauslöser (220-240 V 50/60 Hz) | Interrupter (220-240V 50/60 Hz) |
| 257412 | 45 | Schalter Y-D 23A 3-polig | Switch Y-D 23A 3-polig |



ERSATZTEILLISTE | SPARE PARTS LIST

KF 1800 220-240 V 50Hz | KF 1800 220 V 60 Hz
 KF 1800 380-415 V 50/60 Hz



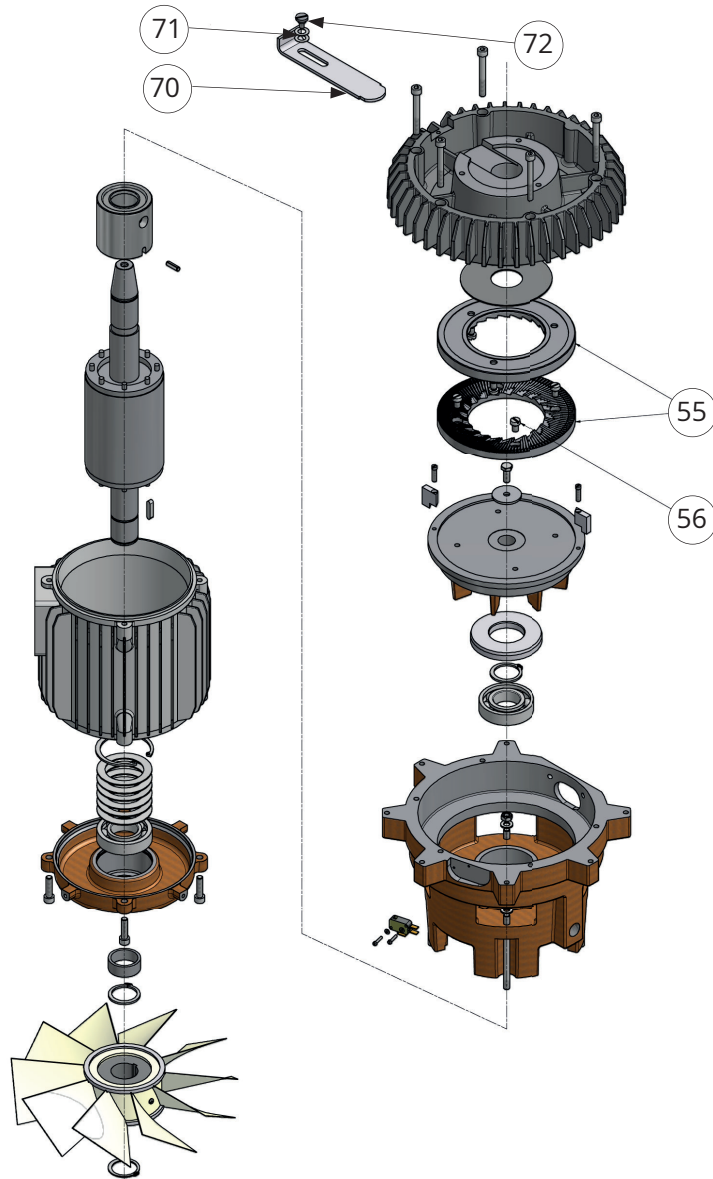
KF 1800

| MATERIAL | POS. | BESCHREIBUNG | DESCRIPTION |
|----------|------|--------------------------------------|--|
| 220055 | 50 | Rotorwelle | Rotor shaft |
| 240609 | 51 | Stator (380-415 V 50/60 Hz) | Stator (380-415 V 50/60 Hz) |
| 240611 | 51 | Stator (220-240 V 50 Hz) | Stator (220-240 V 50 Hz) |
| 241092 | 51 | Stator (220 V 60 Hz) | Stator (220 V 60 Hz) |
| 210015 | 52 | Mahlgehäuse | Housing |
| 220056 | 53 | Laufscheibenflansch | Rotating disc flange |
| 100997 | 54 | Festscheibenflansch, Farbe anthrazit | Stationary disc flange, anthrazit colour |
| 104934 | (54) | Festscheibenflansch, Farbe schwarz | Stationary disc flange, black colour |



ERSATZTEILLISTE | SPARE PARTS LIST

KF 1800 220-240 V 50Hz | KF 1800 220 V 60 Hz
 KF 1800 380-415 V 50/60 Hz



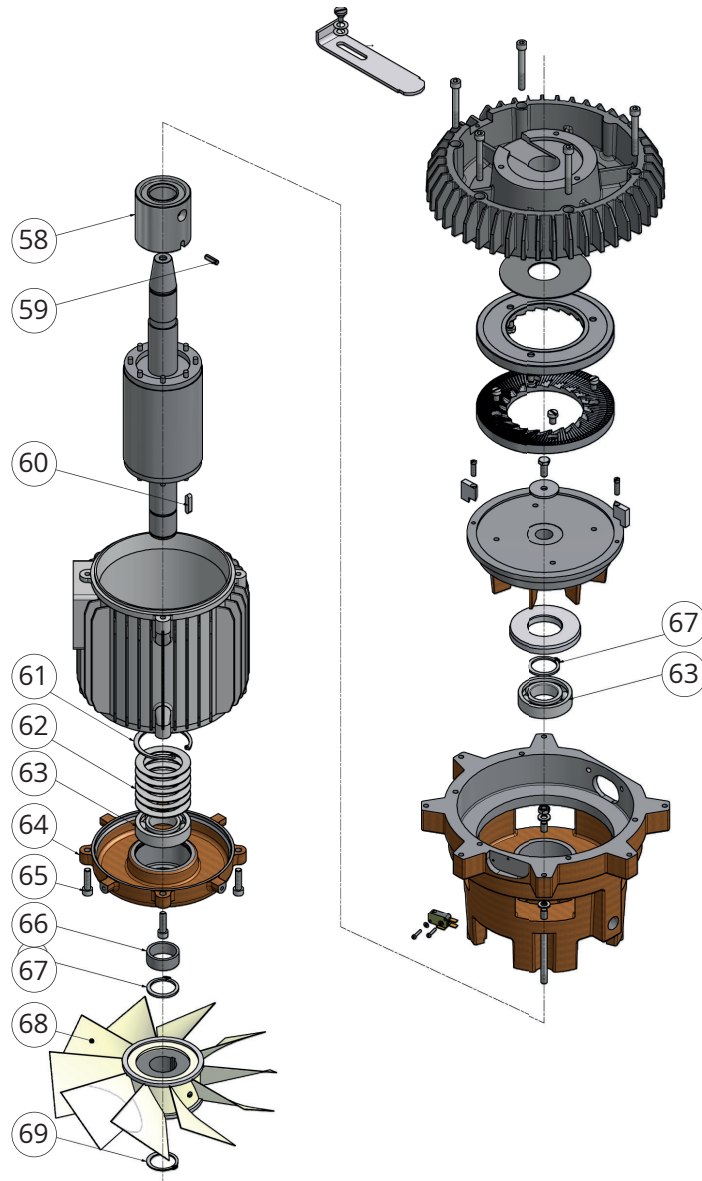
KF 1800

| MATERIAL | POS. | BESCHREIBUNG | DESCRIPTION |
|----------|------|---|-----------------------------------|
| 275809 | 55 | Mahlscheibenset 180 P MSN 1/2 plan | Grinding discs 180 P MSN 1/2 plan |
| 275805 | 55 | Mahlscheibenset 180 G 1/2 plan | Grinding discs 180 G 1/2 plan |
| 700743 | 55 | Mahlscheibenset 180 P MSN | Grinding discs 180 P MSN |
| 700742 | 55 | Mahlscheibenset 180 G | Grinding discs 180 G |
| 250439 | 56 | Zyl-Schrauben ISO 1207-M8x12 verzinkt, 7x | Screw ISO 1207-M8x12 zincked, 7x |
| 240309 | 70 | Trichterschieber | Slider |
| 252401 | 71 | Tellerfeder 18.8x10.2x0.35, 2x | Plate spring 18.8x10.2x0.35, 2x |
| 240645 | 72 | Bundschraube | Screw |



ERSATZTEILLISTE | SPARE PARTS LIST

KF 1800 220-240 V 50Hz | KF 1800 220 V 60 Hz
 KF 1800 380-415 V 50/60 Hz



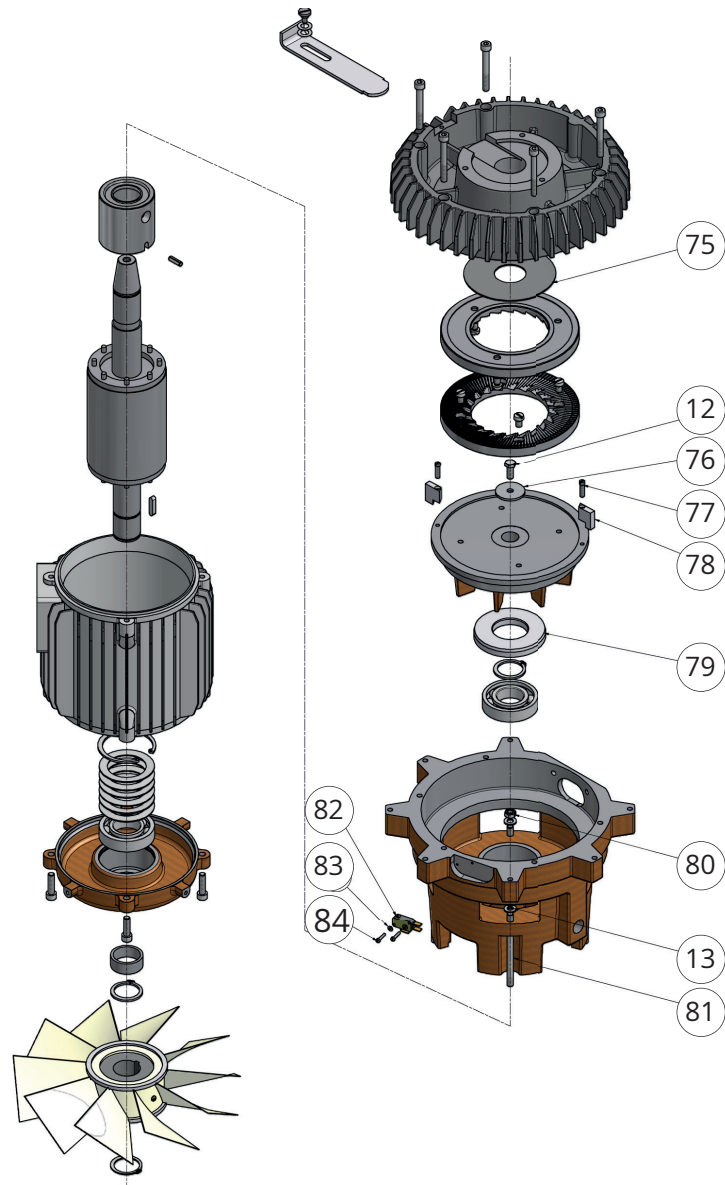
KF 1800

| MATERIAL | POS. | BESCHREIBUNG | DESCRIPTION |
|----------|------|---|---|
| 240302 | 58 | Büchse | Bushing |
| 254403 | 59 | Spannstift | Pin |
| 254910 | 60 | Federkeil 6x6x30 DIN 6885 A | Feather 6x6x30 DIN 6885 A |
| 252012 | 61 | Sicherungsring 72ix2.5 DIN 472 | Circlip 72ix2.5 DIN 472 |
| 252406 | 62 | Tellerfeder 71.5x50.5x1.5/3.0, 6x | Plate spring 71.5x50.5x1.5/3.0, 6x |
| 254008 | 63 | Schrägkugellager 7207B.TVP 35x72x17, 2x | Ball bearing 7207B.TVP 35x72x17, 2x |
| 220057 | 64 | Lagerschild | Bearing support housing |
| 250002 | 65 | Zyl-Schraube In-6kt ISO 4762 M8x30 verzinkt, 4x | Screw In-6kt ISO 4762 M8x30 zincked, 4x |
| 240306 | 66 | Distanzring | Spacer |
| 252002 | 67 | Sicherungsring 35Ax2.5 DIN 471, Farbe schwarz, 2x | Circlip 35Ax2.5 DIN 471, black colour, 2x |
| 230024 | 68 | Ventilatorflügel | Cooling fan |
| 252000 | 69 | Sicherungsring 35Ax1.5 DIN 471, Farbe schwarz | Circlip 35Ax2.5 DIN 471, black colour |



ERSATZTEILLISTE | SPARE PARTS LIST

KF 1800 220-240 V 50Hz | KF 1800 220 V 60 Hz
 KF 1800 380-415 V 50/60 Hz



KF 1800

| MATERIAL | POS. | BESCHREIBUNG | DESCRIPTION |
|------------------------|------|--|---|
| 250319 | 12 | Schraube ISO 4017-M8x20, 8.8 verzinkt | Screw ISO 4017-M8x20, 8.8 zincked |
| 251536 | 13 | Rip-Lock M8 Geomet 500 | Washer M8 Geomet 500 |
| 240311 | 75 | Abdeckring | Cover ring |
| 240646 | 76 | Scheibe D38/8.1x3 | Washer D38/8.1x3 |
| 241551 | 77 | Zyl-Schraube M6x20, 2x | Screw M6x20, 2x |
| 240303 | 78 | Flügel, 2x | Conveyor blade, 2x |
| 240305 | 79 | Abdeckring | Cover ring |
| 251007 | 80 | 6kt-Mutter M8x0.8d DIN 934 verzinkt, 4x | Nut M8x0.8d DIN 934 zincked, 4x |
| 250713 | 81 | Sti-Schraube DIN 939-M8x100/10/22 verzinkt, 4x | Screw DIN 939-M8x100/10/22 zincked, 4x |
| 700939 | 82 | Miniaturschalter | Microswitch |
| 251513 | 83 | Scheibe 3.2x6x0.5 DIN 433 zincked, 2x | Washer 3.2x6x0.5 DIN 433 zincked, 2x |
| 250465 | 84 | Zyl-Schraube ISO 1207-M3x16 zincked, 2x | Cylinder screw ISO 1207-M3x16 zincked, 2x |



ERSATZTEILLISTE | SPARE PARTS LIST

KF 1800 220-240 V 50Hz | KF 1800 220 V 60 Hz
 KF 1800 380-415 V 50/60 Hz

ÄNDERUNGEN IN DER ERSATZTEILLISTE | CHANGES IN THE SPARE PARTS LIST

| VERS. | MATERIAL | POS. | BESCHREIBUNG | DESCRIPTION | BEMERKUNG | COMMENT |
|-------|----------|------|--|---|----------------|-----------------|
| 1.2 | 101004 | 6 | Magnet 32/2 M736.8 | Magnet 32/2 M736.8 | neuer Magnet | New magnet # |
| 1.3 | 101724 | 6 | Ring-magnet HF 24/16 refinished D31/d6.3 | Ring-magnet HF 24/16 refini- shed D31/d6.3 | neuer Magnet | New magnet |
| 1.3 | 101725 | 8 | Screw ISO 2009-M6x25 A2 | Screw ISO 2009-M6x25 A2 | neue Schraube | New screw |
| 1.4 | - | - | Die Version 380-415 V ist bifrequent (50 Hz/ 60 Hz) | At 380-415 V, the grinder built - for 50 Hz/ 60 Hz operation | - | - |
| 1.5 | 100967 | 11 | Flansch 1800 | Flange 1800 machined | ersetzt 230151 | replaces 230151 |
| 1.6 | 100995 | 1 | Blechgehäuse, Farbe anthrazit | Housing panel, anthrazit colour | ersetzt 243354 | replaces 243354 |
| 1.6 | 100996 | 2 | Rückwand, Farbe anthrazit | Housing panel, backside, anthrazit colour | ersetzt 243356 | replaces 243356 |
| 1.6 | 243356 | 3 | Fussplatte, Farbe anthrazit | Bottom plate, anthrazit colour | ersetzt 104832 | replaces 104832 |
| 1.6 | 104930 | (1) | Blechgehäuse, Farbe schwarz | Housing panel, black colour | neu | new |
| 1.6 | 104931 | (2) | Rückwand, Farbe schwarz | Housing panel, backside, black colour | neu | new |
| 1.6 | 104933 | (3) | Fussplatte, Farbe schwarz | Bottom plate, black colour | neu | new |
| 1.6 | 104934 | (54) | Festscheibenflansch D180, Farbe schwarz | stationary disc flange D180, black colour | neu | new |
| 1.6 | 104935 | (4) | Ausguss, Farbe schwarz | Discharge, black colour | neu | new |
| 1.6 | 700939 | 82 | Miniaturschalter | Microswitch | ersetzt 257424 | replaces 257424 |