

# Operations Manual

Model: CSD1212DTA  
Digitally Controlled  
Clam Shell Grill



**PROGRILL**<sup>TM</sup>



**PROLUXE**<sup>TM</sup>   
formerly DOUGHPRO. New Name. Same Quality. Superior Service.  
[proluxe.com](http://proluxe.com)

# Operation Instructions

**Please read carefully before attempting to use this appliance.**

- Step 1.** Carefully unpack and clean grill plates with mild soap then sponge clean with cold water.
- Step. 2.** Place in location where it will be used allowing for clearances per the dimensions indicated.

**WARNING!** Allow 2” minimum clearance between adjacent equipment and/or wall areas.

**Do not touch hot surfaces.**

- Step 3.** Plug into proper 3 prong wall outlet. If other appliances are connected to the same circuit make sure the total load does not exceed maximum ampacity of the circuit. Electrical information is as follows:

**120V/60Hz/1 phase/% \$\$W/1) ., Amps**

## **Step 4: Warm-up**

Energize by turning on the power switch which will illuminate when turned on. The display flashes and shows left preset timer during warm-up. Pre-heat temperature time will be 40-50 minutes. When the set point is reached, the display stops flashing and beeps 3 times.

## **Step 4: Operation**

Simply place product on grill, close lid and press the desired pre-set time cycle (ex: 10 seconds). After the time cycle is finished press it again to reset the time cycle.

# Cleaning Instructions

**NOTE!** Always turn off power and allow to cool down before attempting to clean. ***Never submerge grill in water or other liquid nor use mineral spirits or other flammable material to clean this appliance.***

***!Never use ice to cool down grill, warranty will be void!***

Clean stainless steel and griddle surfaces with soap and water using a soft, clean cloth periodically as required, but at least once daily. Never use harsh abrasives. Use only non-abrasive scouring pads when required.

# Clean Cycle

---

275°F is the factory default temp for the CLEAN cycle. To change the CLEAN cycle temp, simultaneously hold down the TEMP and CLEAN buttons for 15 seconds.

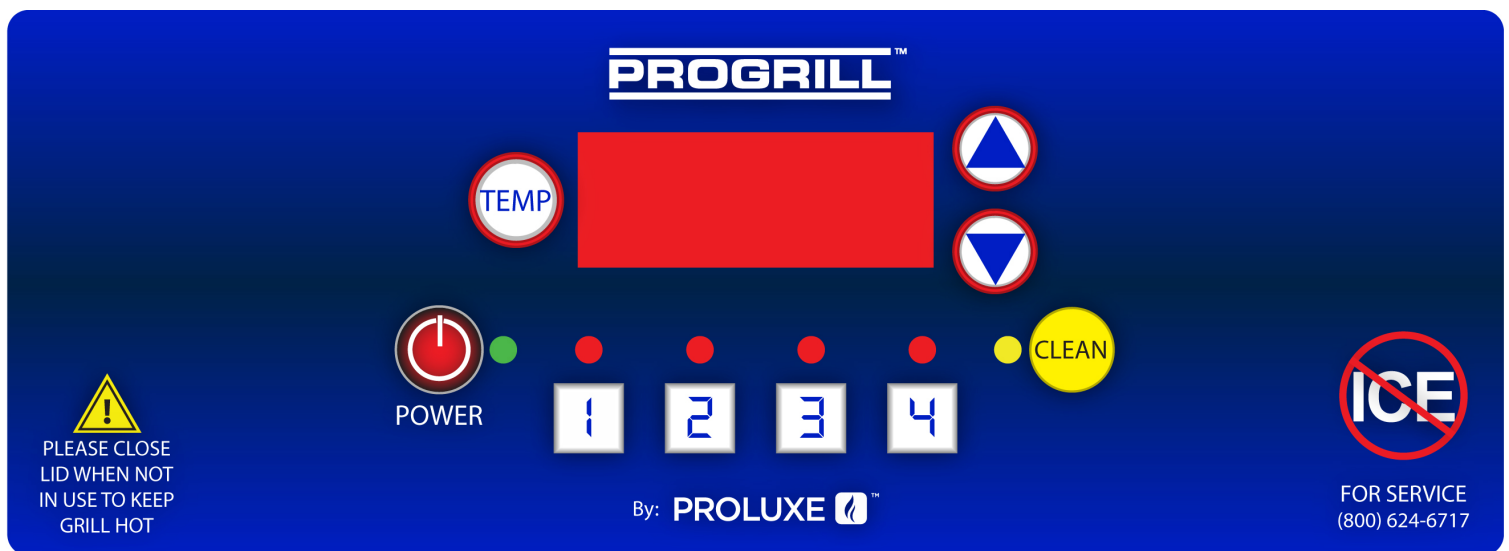
Using the up or down arrows to adjust to the desired temp.

To start a clean cycle, push CLEAN button once so the CLEAN LED light is turned on. All preset LED's are turned off, and the temperature set point is changed to the clean set point of 275°F. This also initiates the cool down to clean set point condition as well the display starts flashing until the clean set point is reached.

To stop the clean cycle, simply press the CLEAN button once to deactivate the clean cycle. The CLEAN LED is turned off, the preset LED's are restored, the temperature set point is changed to the main set point. Again, the warm-up condition is initiated and the display flashes until the cook set point is reached.

# CSDFGFG Operating Instructions:

1. Press desired time to start the time cycle. After the cycle is finished, press it again to reset the time cycle
2. If for any reason the timer has to be reset in the middle of a cycle, you must press and hold the corresponding timer button for 3 seconds.



## ***Instruction's for Adjusting the Temperature***

**PRESS** and hold the **TEMP** and **ARROW** up buttons **simultaneously** for **15 seconds**.

The current temperature setting will display on the right digital display only.

Using the **ARROW** buttons, you may now adjust the temperature to your desired setting.

Once you have set your desired temperature simply push the **TEMP** button. The digital displays will now read the preset times.

## ***Instruction's for Adjusting the Set-Time***

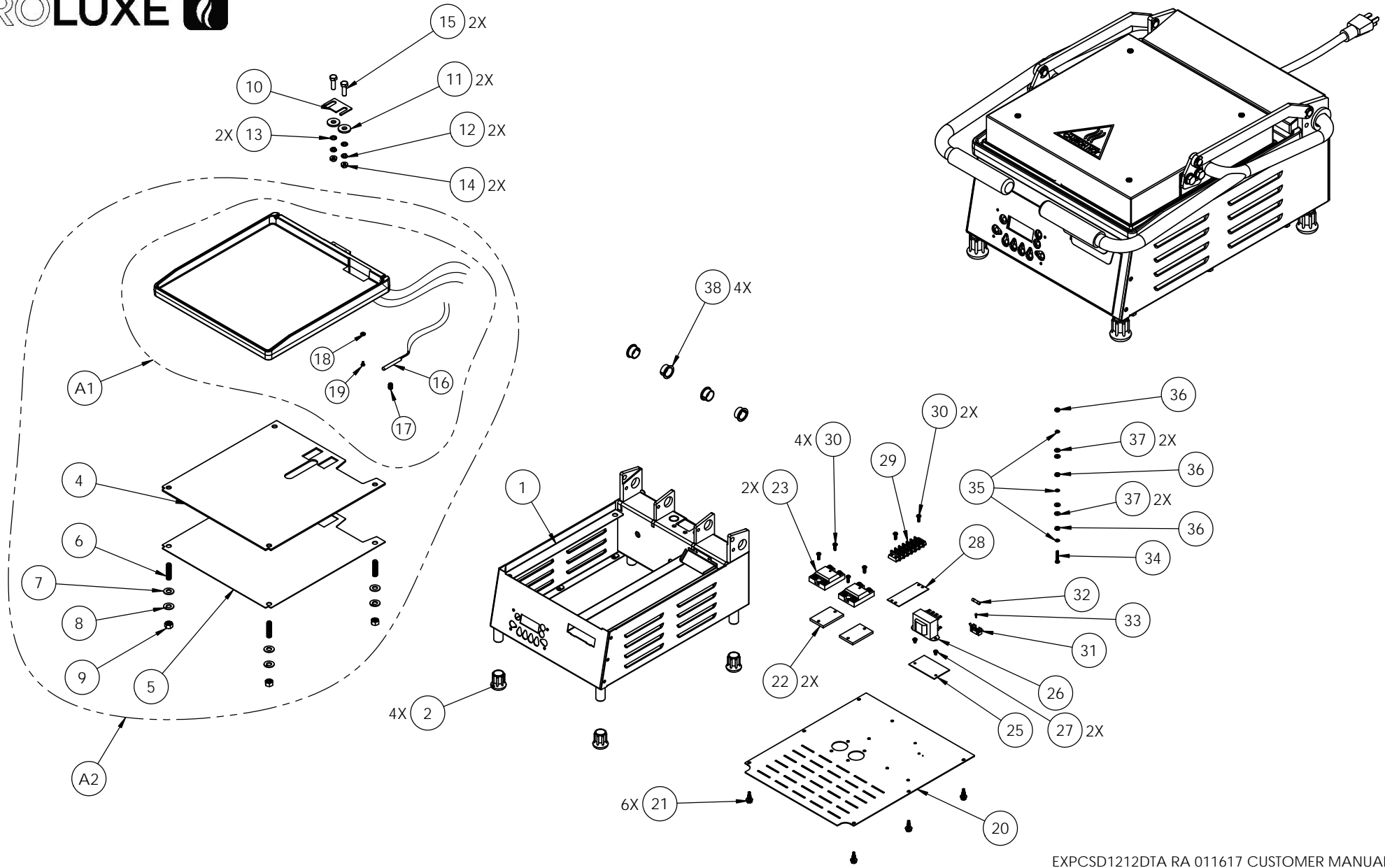
Press the **TEMP** button **first and then the desired timer button and continue to hold both** for **5 seconds**.

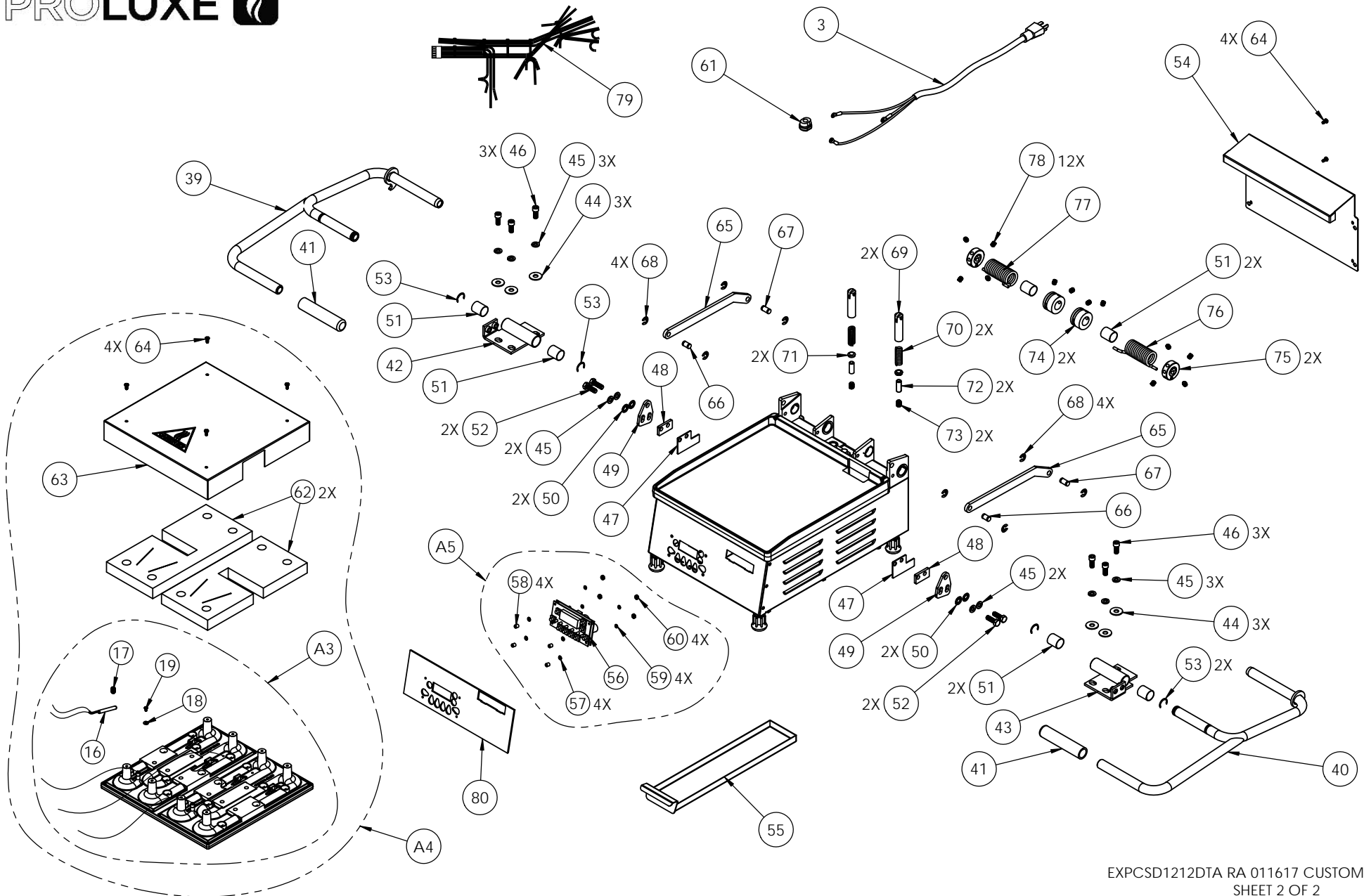
The digital displays will now read their preset times as shown here. Each side is capable of having up to 4 different settings, making a total of 8 set-times.

Now using the **ARROW** buttons you can set your desired time.

Once you have set the desired time simply press the **TEMP** button, the unit will display the new set-time.

**\*IMPORTANT NOTE:** When adjusting the time settings, The **RIGHT SIDE** time buttons control the left side, so the same time you set on the right will automatically be set to the left side accordingly. If you desire an additional set of times you can adjust the left side **AFTER** you have adjusted the right side without effecting the right side settings.





## PARTS LIST FOR MODEL CSD1212DTA

ITEM NO.	PART NUMBER	DESCRIPTION	QTY.
1	PG115100	BASE FRAME ASSEMBLY	1
2	11016546469	FEET, RUBBER 3/4	4
3	1101217174	POWER CORD, 120 VOLTS	1
4	11018344019	LOWER PLATEN, INSULATION	1
5	11018344018	LOWER PLATEN INSULATION COVER	1
6	SST3816112	SCREW, SET 3/8-16X 1-1/2	4
7	WSAE38	WASHER SAE 3/8	4
8	WL38	WASHER SPLIT LOCK	4
9	NH3816	NUT HEX 3/8-16	4
10	11018344030	SHIM, LOWER PLATEN	1
11	C4401	GREEN INSULATION WASHER	2
12	WL14	LOCK WASH 1/4	2
13	WSAE14	WASHER SAE 1/4	2
14	NHSF1420	1/4-20 SERRATED HEX NUT	2
15	BH14201	BOLT, HEX 1/4 - 20 X 1	2
16	1108881102	RTD SENSOR	2
17	SST5161812	SCREW, SET 5/16-18 X 1/2	2
18	WSAE6	WASHER SAE #6	2
19	SP63214	SCREW, PAN HEAD PHILLIPS 6-32 X 1/4	2
20	PG115200	BOTTOM COVER WITH PEM NUTS	1
21	SP83238	SCREW, PAN HEAD PHILLIPS 8-32 X 3/8	6
22	11057322	SINK, HEAT, ALUMINUM (SSR)	2
23	PL2425	SOLID STATE RELAY, 25 AMPS	2
25	1101159180	INSULATOR, TRANSFORMER	1
26	11096975	TRANSFORMER	1
27	SP83214	SCREW, PHILLIPS PAN HEAD 8-32 X 1/4	2
28	MS6016	MARKER STRIP #6	1
29	6016	TERMINAL BLOCK #6, DOUBLE	1
30	SP83212	SCREW, PAN HEAD PHILLIPS 8-32 X 1/2	6
31	MPPF708	FUSE HOLDER 1 AMP	1
32	MPPF701R	FUSE BUSS 1 AMP	1
33	SP25614	SCREW, PHILLIPS PAN 2-56 X 1/4	1
34	SP8321	SCREW, PHILLIPS PAN HEAD 8-32 X 1.0	1
35	WLIT8	WASHER, INTERNAL TOOTH LOCK #8	3
36	NH832	NUT, HEX 8-32	3
37	WSAE8	WASHER SAE #8	4
38	110115563	BUSHING FLANGED, TEFLON, 3/4 I.D. X .875 O.D. X .500"	4
39	11018344027	HANDLE LEFT ASSEMBLY	1
40	11018344026	HANDLE RIGHT ASSEMBLY	1
41	110901168	HANDLE GRIP	2
42	11018344013	CLEVIS ASSEMBLY LEFT HAND	1
43	11018344012	CLEVIS ASSEMBLY RIGHT HAND	1
44	WC516	5/16 WASHER CUT	6
45	WL516	WASHER, 5/16" SPLIT LOCK	10
46	SSH5161834	SCREW, SOCKET HD 5/16-18 X 3/4"	6
47	11018344014	SHIM, COVER	2
48	11018344024	SPACER, LINK	2
49	11018344023	LEVELING BRACKET	2
50	WLIT516	WASHER LOCK INTERNAL TOOTH 5/16	4
51	110115541	BUSHING, TEFLON, 3/4 I.D. X .875 X 1" LONG	6
52	BH516181S	5/16 - 18 x 1 SS., BOLT HEX HEAD	4
53	LCC3478	LOW CLEARANCE CLIP	4
54	11018344016	COVER, REAR	1
55	11018344005	GREASE TRAY ASSY	1

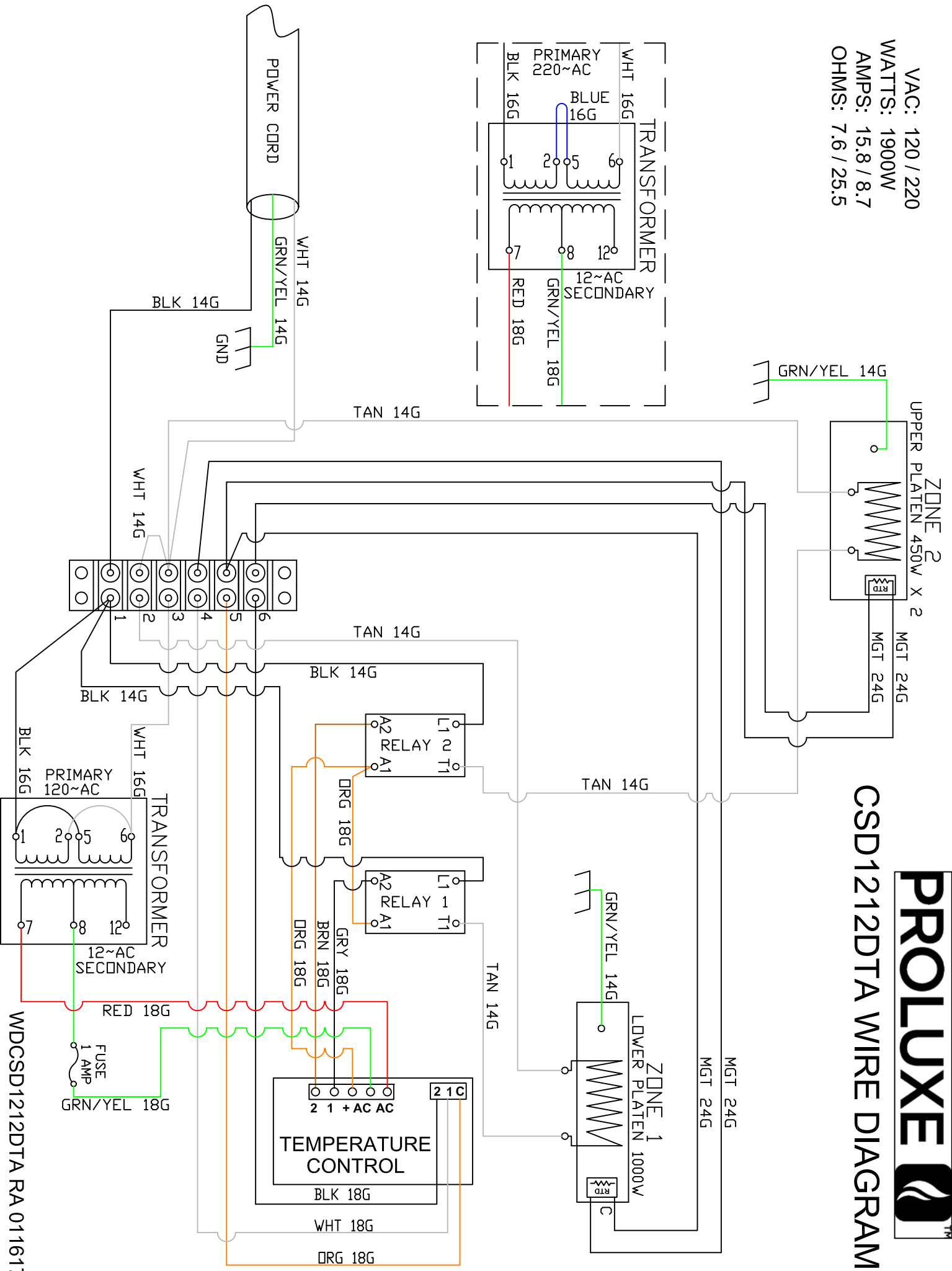
## PARTS LIST FOR MODEL CSD1212DTA

56	<a href="#">1101029052</a>	DIGITAL CONTROL	1
57	<a href="#">311150019</a>	WASHER, STEEL .311 O.D. X .150 I.D.	4
58	<a href="#">11090109</a>	NYLON SPACER 1/4 X .141 X 9/32	4
59	<a href="#">WLIT6</a>	WASHER, INTERNAL TOOTH LOCK #6	4
60	<a href="#">NH632</a>	NUT, HEX 6-32	4
61	<a href="#">1106546468</a>	STRAIN RELIEF	1
62	<a href="#">11018344074C1</a>	UPPER PLATEN, INSULATION	2
63	<a href="#">11019344010</a>	TOP SHROUD	1
64	<a href="#">SP83238S</a>	SCREW, PAN HEAD PHILLIPS 8-32 X 3/8 STAINLESS STEEL	8
65	<a href="#">11018344017</a>	TOP LINK	2
66	<a href="#">11017088865</a>	PIN, PIVOT FRONT	2
67	<a href="#">11018344020</a>	PIN, PIVOT BACK	2
68	<a href="#">11017088867</a>	RING RETAINING 3/8	8
69	<a href="#">110115544</a>	PLUNGER ASSEMBLY	2
70	<a href="#">110115555</a>	SPRING, DETENT	2
71	<a href="#">110115531</a>	TUBING-PAD	2
72	<a href="#">SST38161</a>	SCREW, SET 3/8-16 x 1.00	2
73	<a href="#">SST381612</a>	SCREW, SET 3/8-16 X 1/2	2
74	<a href="#">110115530</a>	COLLAR CAM	2
75	<a href="#">110115528</a>	HANDLE SPRING ADJUSTING COLLAR	2
76	<a href="#">110183440154R</a>	SPRING TORSION RH	1
77	<a href="#">110183440154L</a>	SPRING TORSION LH	1
78	<a href="#">SST5161838KN</a>	SCREW, SET KNURKED CUP POINT 5/16-18 X 3/8	12
79	<a href="#">PG115050</a>	WIRE HARNESS	1
80	<a href="#">OCSD1212DT</a>	CSD1212DTA OVERLAY	1
81	<a href="#">MCSD1212DT</a>	MANUAL CSD1212DTA	
A1	<a href="#">11018344032120K</a>	LOWER PLATEN WITH WIRING ONLY	1
A2	<a href="#">11018344032120AK</a>	LOWER PLATEN ASSEMBLY COMPLETE	1
A3	<a href="#">11019344074120K</a>	UPPER PLATEN WITH WIRING ONLY	1
A4	<a href="#">11019344074120AK</a>	UPPER PLATEN ASSEMBLY COMPLETE	1
A5	<a href="#">1101029052K</a>	KITTED, CONTROLLER DIGITAL	1

VAC: 120 / 220  
 WATTS: 1900W  
 AMPS: 15.8 / 8.7  
 OHMS: 7.6 / 25.5



# CSD1212DTA WIRE DIAGRAM



WDCSD1212DTA RA 011617

## Warranty & Return Policy

**Proluxe** warrants all products manufactured by it against defects in workmanship or materials from the date of purchase for a period of (1) year on parts and **labor**. **This warranty applies to only equipment purchased and used in the United States.** Warranty period shall begin when equipment ships. Warranty travel shall only be covered for 60 miles. Limited lifetime warranty on heating elements.

**ALL WARRANTY SERVICE CALLS MUST BE APPROVED BY PROLUXE. IF THIS PROCEDURE IS NOT FOLLOWED, WARRANTY SERVICE WILL NOT BE COVERED. WARRANTY SERVICE WILL BE PAID ON STRAIGHT TIME, OVERTIME WILL NOT BE COVERED.**

### **Exclusions:**

- 1. WOOD / GAS FIRED OVENS:** PROLUXE warranty applies to the main body of the oven being steel / refractory and insulation shall be free from defects in materials and workmanship for a period of four years from the date of purchase. The gas equipment shall be free from defects in materials and workmanship for a period of one (1) year from the date of purchase. Lifetime warranty against cracks on oven floor.
- 2. Air compressors are excluded from this warranty,** but PROLUXE may act as a warranty expeditor in certain instances regarding these compressors. The air compressor manufacturer provides a limited warranty and a copy of this warranty is furnished with all compressors sold by PROLUXE. For prompt handling of compressor warranty claims the instructions of the compressor manufacturer must be adhered to.
- 3. Equipment built to special order as well as accessories** cannot be canceled and are not returnable unless defective within the terms of this warranty.
- 4. In no event shall PROLUXE be liable for consequential damages arising out of the failure of any of its products if operated improperly or caused by normal wear or damage by operator abuse.**
- 5. BC2325 pedestal warranty disclaimer:** Pedestals shall only be covered under warranty if they have been cleaned using the factory approved cleaning method. cracked or damaged pedestals must be inspected by the factory before warranty is authorized.
- 6. Limited lifetime warranty on heating elements:** If replacement is needed, Proluxe will send the new part at no charge but **labor** will not be covered unless the unit is still under the 1 year manufacture warranty.

### **Returned Merchandise Policy:**

Should it become necessary to return any of the company's products, the following instructions must be adhered to: First, contact our customer service department for approval and a return authorization number. *Please have the serial number of your item available at that time.* All merchandise must be shipped *freight prepaid* by customer or service agency. Subject to the inspection of the product by the company, a restocking charge of 20% of the Net purchased price paid to PROLUXE will be assessed. Merchandise may not be returned for credit without *prior written approval* of PROLUXE. Collect shipments *will not* be accepted. No returns after 60 days of original shipment date on machines. Purchased parts may not be returned after 30 days.

If upon inspection by PROLUXE or its authorized agent it is determined the equipment has not been used in an appropriate manner, has been modified, or has not been properly maintained, or has been subject to misuse, misapplication, neglect, abuse, accident, unauthorized modification, damage during transit, delivery, fire, flood, act or war, riot or act of God, then this warranty shall be deemed null and void.

### **Terms & Conditions:**

1. Prices indicated in the PRICE LIST are suggested retail prices and are shown in U.S. DOLLARS.
2. Terms of Payment: 1% 10 days, NET 30 days.
3. **NEW ACCOUNTS:** Satisfactory credit information must be provided before open account status can be extended. Unless agreed otherwise, all shipments will be made C.O.D., CASH IN ADVANCE.
4. **PRICING:** Prices, specifications, model numbers, capacities and accessories are subject to change without notice.
5. **FREIGHT / ROUTING:** Method of shipment will be determined by PROLUXE unless otherwise advised by PURCHASER.
6. **DAMAGED CLAIMS:** All merchandise shipped at purchaser's risk. Inspection must be made by purchaser at time goods are received. If goods are damaged, the PURCHASER shall request that the agent of the transportation company make a written notation on the proper shipping documents immediately and then file a claim for damage. **GOODS DAMAGED IN SHIPMENT ARE NOT RETURNABLE.**
7. **RETURNS:** Machines may not be returned after 60 days. Purchased parts may not be returned after 30 days. A restocking fee of 20% will be assessed on non-warranty returns.
8. **TAXES:** Prices indicated herein DO NOT include State, Federal, Local or foreign taxes or duties, nor do they include fees, permits, insurance or other levies, all of which are the responsibility of the purchaser.
9. All orders are subject to acceptance by PROLUXE.
10. Possession of this price list shall not be considered an offer to sell.