

# Operations Manual

Model: DPR3000PMA

Dual Pass Dough Sheeter



**DOUGHPRO**®



**PROLUXE**™

formerly DOUGHPRO. New Name. Same Quality. Superior Service.

[proluxe.com](http://proluxe.com)

## WARNINGS FOR OPERATOR



**CAUTION**  
**DO NOT OPERATE DOUGH ROLLER**  
**WITHOUT THE GUARDS IN PLACE**



**CAUTION**  
**DO NOT CLEAN THIS DOUGH ROLLER**  
**WHILE IT IS PLUGGED IN**



**CAUTION**  
**DO NOT USE SHARP OBJECTS**  
**TO CLEAN ANY PART OF THE MACHINE**



**CAUTION**  
**KEEP HANDS AND FINGERS**  
**CLEAR OF MOVING PARTS**



**CAUTION**  
**DO NOT PLACE ITEMS**  
**OTHER THAN DOUGH INTO THE CHUTE**



**CAUTION**  
**IN CASE OF POWER CORD DAMAGE,**  
**DO NOT ATTEMPT TO REPAIR**  
**OR REPLACE THE POWER CORD.**  
**CONTACT THE MANUFACTURER**  
**OR THE LOCAL DISTRIBUTOR**



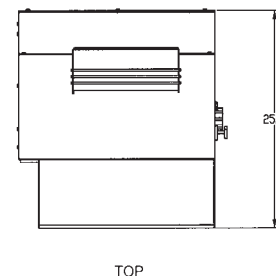
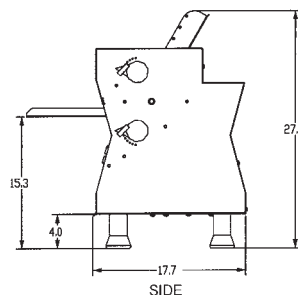
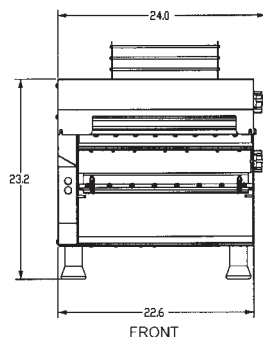
**CAUTION**  
**DO NOT USE OIL OR GREASE**  
**ON MACHINE PARTS**  
**AS THEY DO NOT**  
**REQUIRE RE-LUBRICATION**

## Dough Roller (double pass)

- Heavy duty stainless steel construction.
- Compact table top design, allows for easy placement on any counter or mobile base.
- Spring loaded scrapers make it easy to remove and clean rollers.
- Rolls up to an 18" crust.
- Simple two pass design for ease of use.
- Maintenance free drive system.
- Wide hopper, great for large dough balls.
- Perfect for rolling a large variety of dough balls such as: Focaccia, Calzones, Pie Crusts, Roti, Pita Bread and more.
- Thickness ranges from paper thin to ¼", depending upon dough structure.



<b>ON/OFF Switch</b>	Yes	<b>Electrical Data</b> 115v/60hz 8.8 amps
<b>Bearings</b>	Sealed	
<b>Adjustable Thickness</b>	Yes	230v/50hz 4.4amps
<b>Legs</b>	4"	<b>Shipping Weight</b> 235 lbs. / 106 kgs.
<b>Finish</b>	Stainless	



**Operating the DPR3000 2-pass roller is simple. Follow these easy steps.**



Once you have pre-portioned & floured your doughballs, place a small amount of flour in the hopper and on the receiving table. Next place your doughball in the hopper.



**Pass 1.** Your doughball will be partially flattened and semi oblong. Rolling out on the floured receiving table.



**Pass 2.** Is just like the first pass but now you are going to turn your dough 90 degrees left or right inserting it into the bottom rollers.



After your dough is rolled out it is good to place your hands beneath the bottom chute and lightly stretch your dough to its desired sizing placing it directly on your pan, screen or peel.

Specifications, Details and Prices are subject to change without prior notice. Please call for current pricing.

Doughpro  
20281 Harvill Ave • Perris, CA 92570  
(951) 657-0379 • (800) 624-6717 • Fax (951) 657-4594



Website: [www.doughpro.com](http://www.doughpro.com) • E-Mail: [info@doughpro.com](mailto:info@doughpro.com)

# **DOUGHPRO**<sup>®</sup>

STEARNS PRODUCT DEVELOPMENT CORPORATION  
20281 Harvill Ave, Perris, CA 92570 Tel: (800) 624-6717 - Fax: (951) 657-4594

## **HOW TO OPERATE THE DPR3000**

Once the doughballs have been pre-portioned & floured, place a small amount of flour in the hopper and on the receiving table. Next, place the doughball in the hopper.



Pass 1. The doughball will be partially flattened and semi oblong, rolling out on the floured receiving table.



Pass 2 is just like the first pass, but this time, turn the dough 90 degrees left or right, inserting it into the bottom rollers.



After the doughball is rolled out, place hands or receiving tray beneath the bottom chute. Lightly stretch dough to the desired size after placing it directly onto a pan, screen, or peel.



# DOUGHPRO<sup>®</sup>

STEARNS PRODUCT DEVELOPMENT CORPORATION  
20281 Harvill Ave, Perris, CA 92570 Tel: (800) 624-6717 - Fax: (951) 657-4594

## HOW TO CLEAN THE DPR3000

The unit should be unplugged before cleaning!

Loosen the screws to open the safety shield.



Detach the springs at each end.



Remove all scrapers.



# HOW TO CLEAN THE DPR3000 (CONTINUED)

Clean rollers, scrapers, tray, and machine housing with a damp cloth, then with a dry cloth.

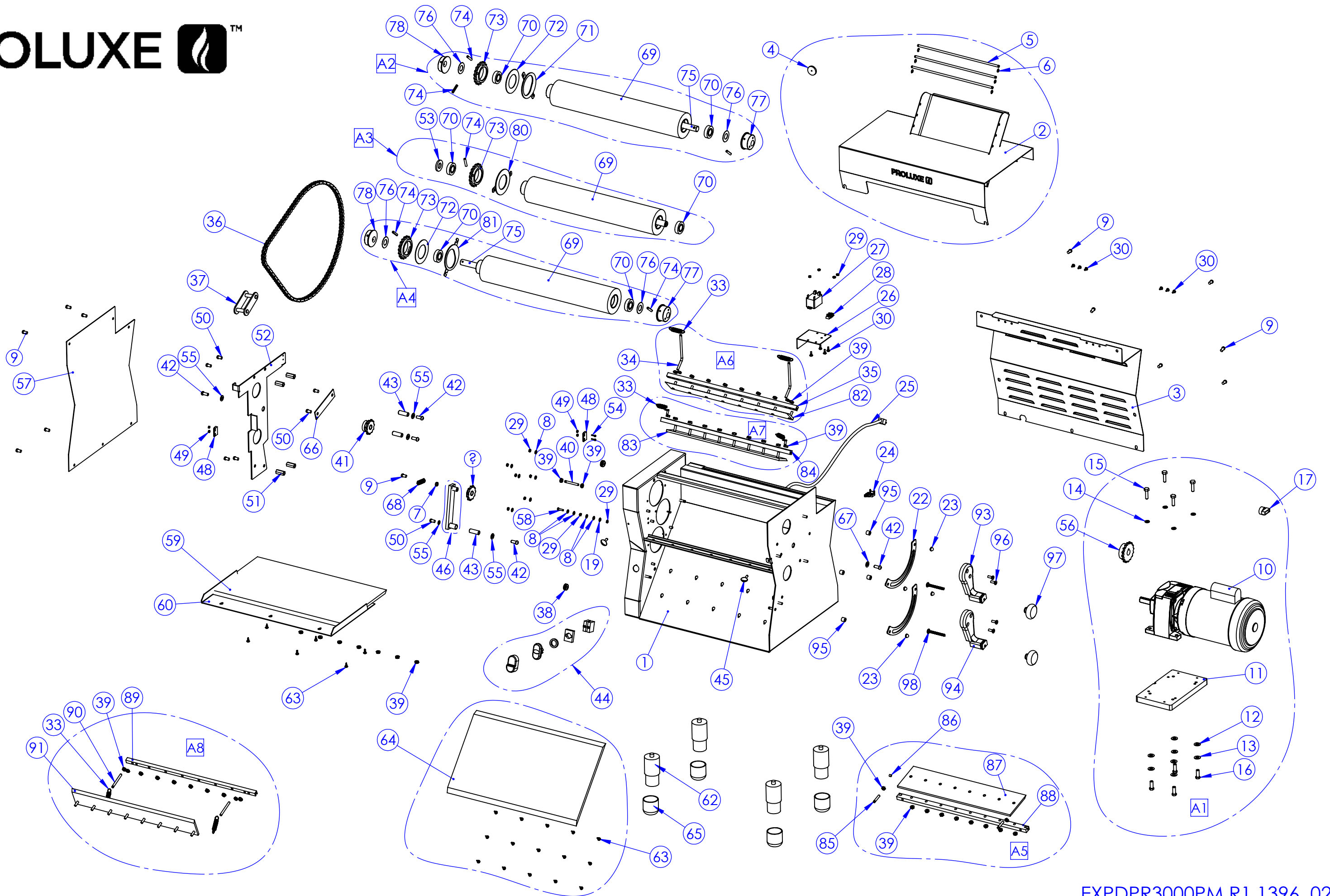


Re-attach the scrapers and springs.



Tighten the screws on the safety shield.





DPR3000PM

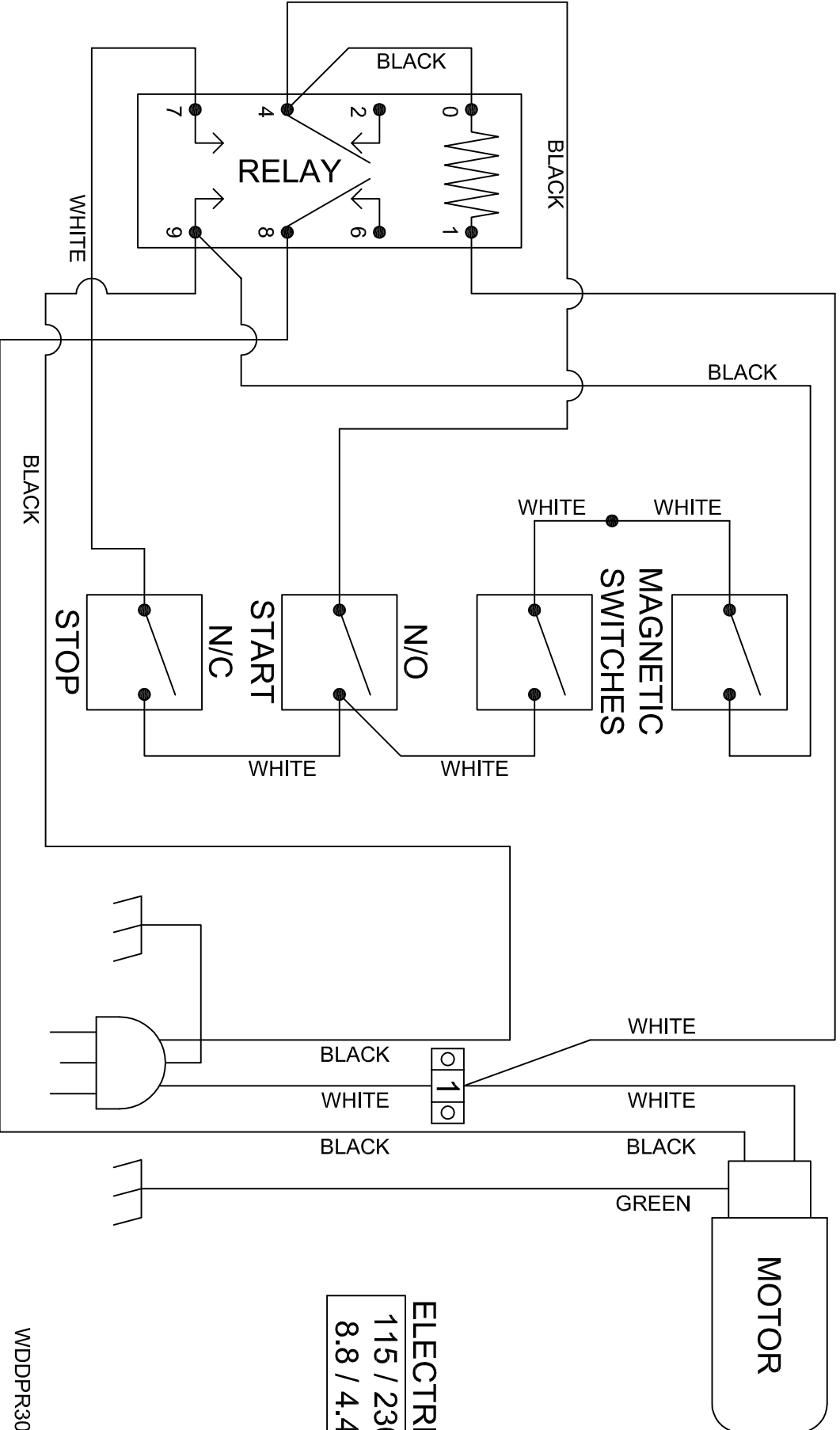
ITEM #	DESCRIPTION	PART NO.	QTY.
	<b>MODEL DPR3000PM</b>	<b>120V</b>	
1	DOUGH ROLLER WELDING ASSEMBLY	1101097001	1
2	SAFETY COVER ASSEMBLY	1101097041	1
3	BACK COVER	1101097092	1
4	ENCASED CERAMIC CUP MAGNET	1101097076	1
5	SAFETY BAR	1101097044	3
6	#3 E-CLIP	1101097045	6
7	HEX NUT 1/4-20	NH1420	1
8	WASHER #8	WSAE8	8
9	1/4-20 x 1/2 BUTTON HEAD SCREW SST	SB142012S	14
10	3/4 HP MOTOR	110579122120	1
11	MOTOR BASE	110623006	1
12	LOCK WASHER 3/8	WL38	4
13	WASHER 3/8	WSAE38	4
14	LOCK WASHER 5/16	WL516	4
15	SCREW, BOLT HEX HEAD 5/16-18 x 1-1/4 SST	BH51618114S	4
16	SCREW, BOLT HEX HEAD 3/8-16 X 1.0	BH38161	4
17	3/8 x 1/2 CLAMP CONNECTOR	100455167	1
19	WASHER #8 INTERNAL TOOTH LOCK	WLIT8	1
22	ADJUSTMENT PLATE	1101047119	2
23	ACORNNUT 1/4-20	NA1420	4
24	STRAIN RELIEF	MPS90014	1
25	POWER CORD	110969174	1
26	RELAY BRACKET	1101097080	1
27	RELAY	1101097081	1
28	TERMINAL BLOCK	6991	1
29	HEX NUT 8-32	NH832	12
30	SCREW, PHILLIP 8-32 x 3/8 SST	SP83238	12
33	EXTENSION SPRING SCRAPER	1101097052	6
34	SPRING PIN BACK SCRAPER#1	1101097051	2
35	BAR, BACK SCRAPER # 1	1101097050	1
36	#41 CHAIN	1101097114	46 3/4"
37	#41 LOCKING LINK CHAIN	1101097085	1
38	GROMMET	110969116	2
39	1/4-20 SERRATED HEX NUT	NHF1420	10
40	PIN, TENSION SPRING	1101097079	1
41	11 TEETH SPROCKET ASSEMBLY	1101097019	1
42	SCREW, SOCKET BUTTON HEAD 5/16-18 x 3/4	SB5161834	4
43	THREADED SPACER	1101097074	2
44	ON/OFF COMBINATION SWITCH	1101097083	1
45	THUMB SCREW WITH SHOULDER	1101097086	2
46	TENSIONER BAR ASSY.	1101097009	1
47	IDLER SPROCKET ASSY	1101097014	1
48	PROXIMITY SWITCH	1101097082	2
49	HEX NUT 4-40	NH440	4
50	5/16-18 x 5/8 BUTTON HEAD SCREW	SB5161858	7
51	5/16-18 x1 1/8 HE COUPLING	1101097094	4
52	CHAIN GUARD	1101097075	1
53	MIDDLE ROLLER SPACER	1101097105	2
54	SCREW ROUND HEAD 4-40 X 1/2	SR44012	2
55	WASHER CUT 5/16	WC516	3
56	SPEED REDUCER SPROCKET	110579123	1
57	LEFT SIDE COVER	1101097093	1
58	SCREW PAN HEAD PHILLIPS 8-32 X 3/4 SST	SP83234S	1
59	INTAKE TRAY	1101097040	1
60	IN-TAKE TRAY SHELF SUB ASSEMBLY	1101097037	1
62	ADJUSTABLE LEG	1101097091	4
63	6-32 x 3/8 LONG	SP63214ST	21
64	DISCHARGE PLATE	1101097073	1
65	NEOPREME FOOT PAD	1101097096	4
66	11 TEETH SPROCKET SUPPORT	1101097121	1

DPR3000PM

67	5/16 SAE WASHER	WSAE516	1
68	SPROCKET TENTION SPRING	1101097015	1
69	ROLLER	1101097021	3
70	DOUBLE SEALED BEARING	1101097026	6
71	TOP ROLLER BRACKET	1101097023	1
72	PLASTIC GUARD	1101097103	2
73	18 TEETH SPROCKET	1101097025	3
74	3/16 X 1 1/4 ROLL PIN	PR316114	7
75	UPPER & LOWER ROLLER SHAFT	1101097027	2
76	PLASTIC WASHER	1101097028	4
77	RIGHT SIDE CAM	1101047029	2
78	LEFT SIDE CAM	1101097030	2
79	MIDDLE ROLLER SHAFT	1101097033	1
80	MIDDLER ROLLER BRACKET ASSEMBLY	1101097034	1
81	BOTTOM ROLLER CONCENTRIC BRACKET	1101097036	1
82	SCRAPER, BACK #1	1101097049	1
83	SCRAPER TOP FRONT #2	1101097056	1
84	BAR, FRONT TOP SCRAPER # 2	1101097057	1
85	PIN, FRONT MIDDLE SCRAPER # 3	1101097064	2
86	MAGNET, ROUND 1/4", SAFETY SWITCH	110601065	1
87	SCRAPER MIDDLE FRONT#3	1101097061	1
88	BAR, FRONT MIDDLE SCRAPER # 3,	1101097063	1
89	BAR, FRONT BOTTOM SCRAPER # 4	1101097070	1
90	PIN, SPRING, FRONT BOTTOM , SCRAPER # 4	1101097071	2
91	SCRAPER BOTTOM FRONT #4,	1101097069	1
92	CAP, ROLLER ASSEMBLY	110104718	1
93	INFINITY ADJUSTMENT HANDLE ASSY(UPPER)	1101047118	1
94	INFINITY ADJUSTMENT HANDLE ASSY(LOWER)	1101047123	1
95	SPACER,INFINITY ADJUSTMENT PLATE	1101047XXX	4
96	SOCKET CAP, FLAT 1/4-20X5/8SS	SF142058S	4
97	KNOB SWING	110017	2
98	BOLT, CARRIAGE 1/4-20X 2 1/2 SS	BC1420212SS	2
A1	GEAR MOTOR KIT ASSEMBLY	110579120	1
A2	ROLLER, TOP ASSY	110104720K	1
A3	ROLLER, MIDDLE ASSY	1101097032	1
A4	ROLLER, BOTTOM ASSY	110104735K	1
A5	MIDDLE FRONT SCRAPER, #3 ASSEMBLY	1101097059	1
A6	BACK SCRAPER # 1 ASSEMBLY	1101097046	1
A7	TOP FRONT SCRAPER, #2 ASSEMBLY	1101097053	1
A8	BOTTOM FRONT SCRAPER , #4 ASSEMBLY	1101097066	1

# DOUGHPRO

## MODEL DPR3000 WIRE DIAGRAM



ELECTRICAL RATING	
115 / 230	VOLTS
8.8 / 4.4	AMPS

## Warranty & Return Policy

**Proluxe** warrants all products manufactured by it against defects in workmanship or materials from the date of purchase for a period of (1) year on parts and **labor**. **This warranty applies to only equipment purchased and used in the United States.** Warranty period shall begin when equipment ships. Warranty travel shall only be covered for 60 miles. Limited lifetime warranty on heating elements.

**ALL WARRANTY SERVICE CALLS MUST BE APPROVED BY PROLUXE. IF THIS PROCEDURE IS NOT FOLLOWED, WARRANTY SERVICE WILL NOT BE COVERED. WARRANTY SERVICE WILL BE PAID ON STRAIGHT TIME, OVERTIME WILL NOT BE COVERED.**

### **Exclusions:**

- 1. WOOD / GAS FIRED OVENS:** PROLUXE warranty applies to the main body of the oven being steel / refractory and insulation shall be free from defects in materials and workmanship for a period of four years from the date of purchase. The gas equipment shall be free from defects in materials and workmanship for a period of one (1) year from the date of purchase. Lifetime warranty against cracks on oven floor.
- 2. Air compressors are excluded from this warranty,** but PROLUXE may act as a warranty expeditor in certain instances regarding these compressors. The air compressor manufacturer provides a limited warranty and a copy of this warranty is furnished with all compressors sold by PROLUXE. For prompt handling of compressor warranty claims the instructions of the compressor manufacturer must be adhered to.
- 3. Equipment built to special order as well as accessories** cannot be canceled and are not returnable unless defective within the terms of this warranty.
- 4. In no event shall PROLUXE be liable for consequential damages arising out of the failure of any of its products if operated improperly or caused by normal wear or damage by operator abuse.**
- 5. BC2325 pedestal warranty disclaimer:** Pedestals shall only be covered under warranty if they have been cleaned using the factory approved cleaning method. cracked or damaged pedestals must be inspected by the factory before warranty is authorized.
- 6. Limited lifetime warranty on heating elements:** If replacement is needed, Proluxe will send the new part at no charge but **labor** will not be covered unless the unit is still under the 1 year manufacture warranty.

### **Returned Merchandise Policy:**

Should it become necessary to return any of the company's products, the following instructions must be adhered to: First, contact our customer service department for approval and a return authorization number. *Please have the serial number of your item available at that time.* All merchandise must be shipped *freight prepaid* by customer or service agency. Subject to the inspection of the product by the company, a restocking charge of 20% of the Net purchased price paid to PROLUXE will be assessed. Merchandise may not be returned for credit without *prior written approval* of PROLUXE. Collect shipments *will not* be accepted. No returns after 60 days of original shipment date on machines. Purchased parts may not be returned after 30 days.

If upon inspection by PROLUXE or its authorized agent it is determined the equipment has not been used in an appropriate manner, has been modified, or has not been properly maintained, or has been subject to misuse, misapplication, neglect, abuse, accident, unauthorized modification, damage during transit, delivery, fire, flood, act or war, riot or act of God, then this warranty shall be deemed null and void.

### **Terms & Conditions:**

1. Prices indicated in the PRICE LIST are suggested retail prices and are shown in U.S. DOLLARS.
2. Terms of Payment: 1% 10 days, NET 30 days.
3. **NEW ACCOUNTS:** Satisfactory credit information must be provided before open account status can be extended. Unless agreed otherwise, all shipments will be made C.O.D., CASH IN ADVANCE.
4. **PRICING:** Prices, specifications, model numbers, capacities and accessories are subject to change without notice.
5. **FREIGHT / ROUTING:** Method of shipment will be determined by PROLUXE unless otherwise advised by PURCHASER.
6. **DAMAGED CLAIMS:** All merchandise shipped at purchaser's risk. Inspection must be made by purchaser at time goods are received. If goods are damaged, the PURCHASER shall request that the agent of the transportation company make a written notation on the proper shipping documents immediately and then file a claim for damage. **GOODS DAMAGED IN SHIPMENT ARE NOT RETURNABLE.**
7. **RETURNS:** Machines may not be returned after 60 days. Purchased parts may not be returned after 30 days. A restocking fee of 20% will be assessed on non-warranty returns.
8. **TAXES:** Prices indicated herein DO NOT include State, Federal, Local or foreign taxes or duties, nor do they include fees, permits, insurance or other levies, all of which are the responsibility of the purchaser.
9. All orders are subject to acceptance by PROLUXE.
10. Possession of this price list shall not be considered an offer to sell.