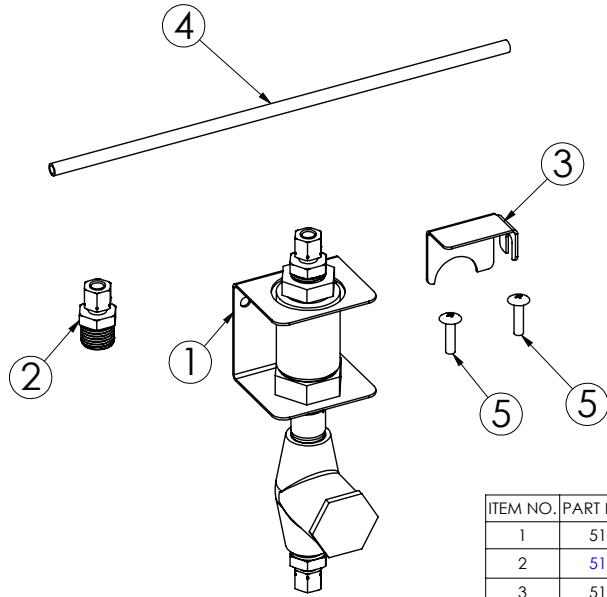




Your Solutions Partner

INSTALLATION INSTRUCTIONS

TSC PROOFER OVEN BACKFLOW PREVENTER ASSEMBLY INSTRUCTIONS FOR DUKE KIT# 600187



ITEM NO.	PART NUMBER	DESCRIPTION	QTY.
1	512602	ASM., BACKFLOW VALVE	1
2	512421	FITTING, BRASS, COMP., 1/4 TUBE X 3/8 NPT	1
3	512422	ANGLE, LOCKING, BACK FLOW VALVE	1
4	512596	TUBE, WATER, BACKFLOW TO FILTER, 10in (254 mm)	1
5	0281200	SCREW, 10-24 x 3/4" TRUSS, HD, SS	2

Items required for this installation:

- Cross Tip screw driver
- 11/16" Open End or Line Wrench
- 1/2" Open End or Line Wrench

*This manual is Copyright © 2011 Duke Manufacturing Co. All rights reserved.
 Reproduction without written permission is prohibited. Duke is a registered trademark of the Duke Manufacturing Co.*

Duke Manufacturing Co.

2305 N. Broadway
 St. Louis, MO 63102
 Phone: 314-231-1130
 Toll Free: 1-800-735-3853
 Fax: 314-231-5074
 www.dukemfg.com

Technical Description and Application Notes

Check with your local authority having jurisdiction regarding approvals for connecting the Duke TSC Proofer Oven to a potable water supply before making any plumbing connections. Plumbing code requirements vary, but Duke has made a kit available (or installed as a factory option) to add a backflow prevention device to protect water supply systems by preventing the reverse flow of non-potable water into the potable domestic water system. The device consists of two independently acting check valves, internally force-loaded to a normally closed position and designed/constructed to operate under intermittent or continuous pressure conditions.

The two main components of the Duke backflow preventer system are:

1. Dual Check Valve type backflow preventer that conforms to ANSI/ASSE standard #1024 and is CSA standard B64.6 certified.
2. Inlet water strainer equipped with 100-mesh screen and installed up stream of the backflow preventer. The screen is conveniently located on the rear panel of the proofer, below the backflow preventer, for easy access during cleaning/replacement.

NOTE: Some municipalities require annual inspection of backflow preventer devices and/or cleaning of inlet strainers. Check with your local authority having jurisdiction for these or any additional regulations.

Duke Manufacturing Co.

This equipment is intended to be connected to a potable water supply system under pressure and is to be installed with adequate backflow protection to comply with all applicable federal, state, and local codes.

Water supply pressure for proper operation shall be:
Minimum 40 PSIG (275 KPa)
Maximum 65 PSIG (448 KPa)
measured at water line inlet to the equipment.

If so equipped, regular maintenance is required to replace the water filter cartridge at least once per year, and to clean the inlet water screen at least once per year. Consult state/local codes for any additional requirements.

INSTALLATION OF WATER FILTER

Install new filter by removing sanitary cap from top of cartridge, insure two black O-rings are in place, then lift up into filter head and rotate cartridge 1/4 turn counter clockwise until it comes to a complete stop. Flush 2 gallons (5.6 Liters) of water through the new filter before using proofer to purge air from filter. Remove hose from bottom of proofer by loosening the compression nut at the disconnect fitting and pull hose out. Place hose over container and turn on water. It will take a minute for the filter to fill before water flows out of hose into container. once filter is flushed with 2 gallons (5.6 Liters) of water, turn off water supply again, insert hose into water line disconnect, tighten compression nut and turn water supply on again. Check for leaks at connection fittings.

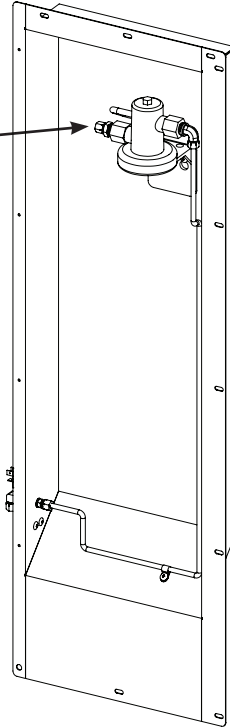
Patent(s) Pending

1. Turn unit power off with Control Power Switch and turn off external mains supply disconnect.

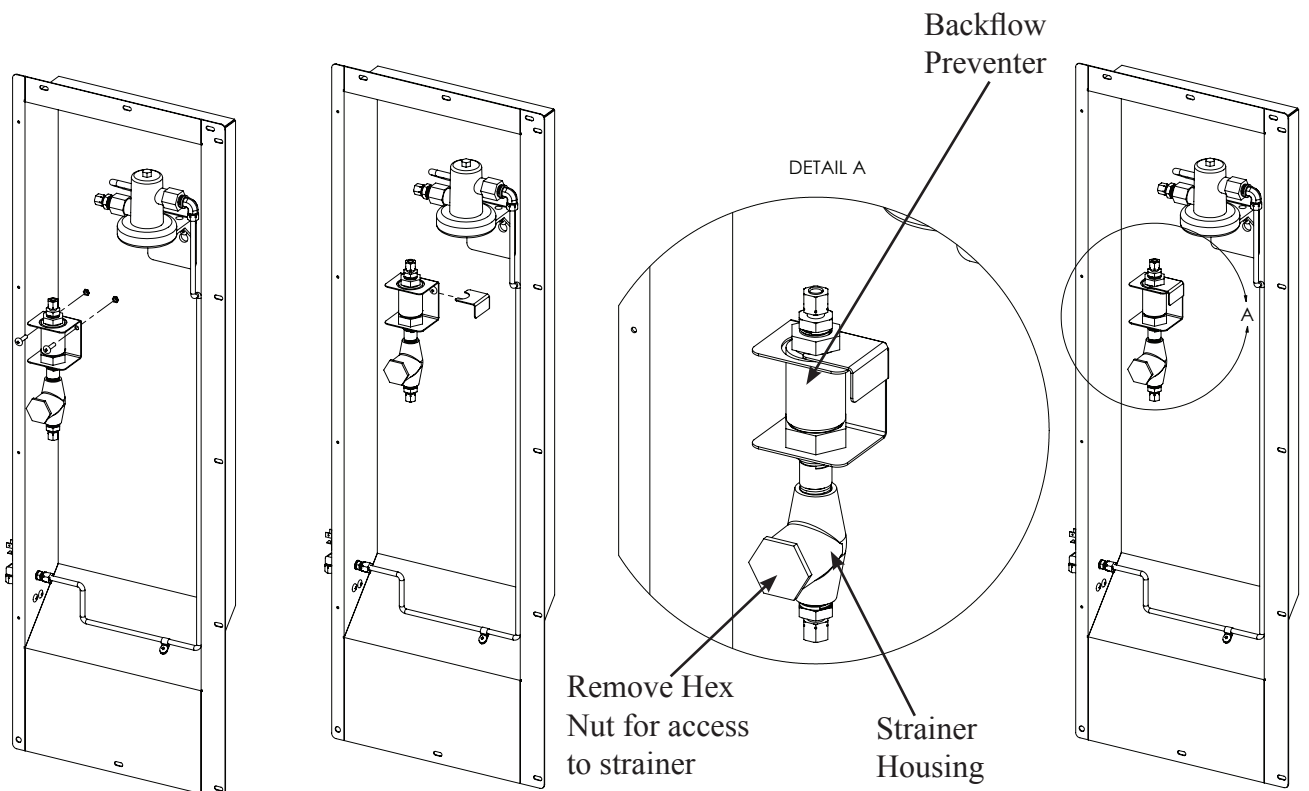


2. Turn off water supply.
3. Disconnect Wall Brackets if installed. See Item 9.
4. Disconnect supply line from filter head.

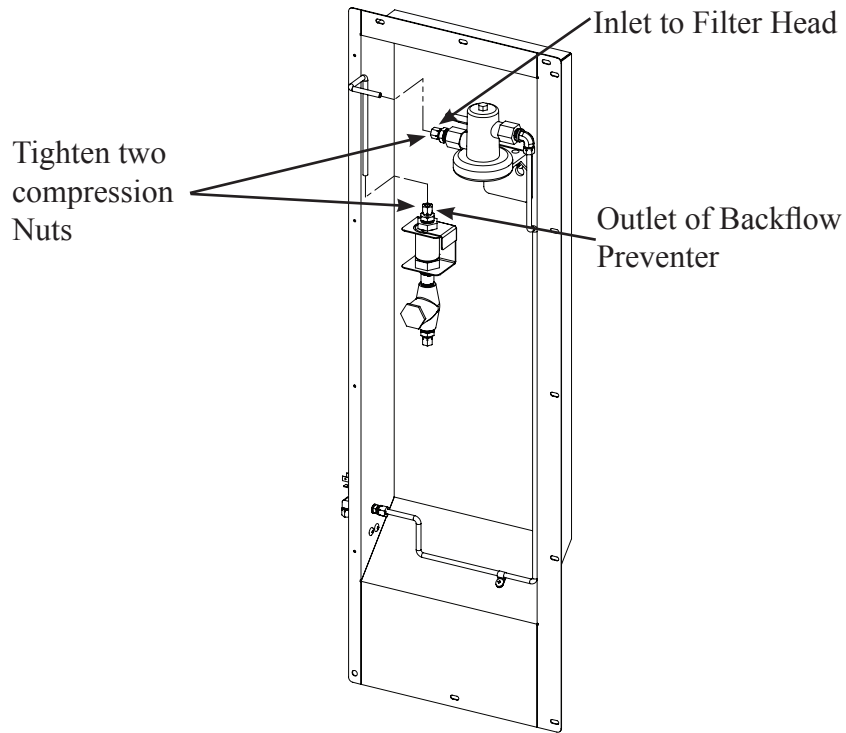
Filter Head Inlet Water Connection



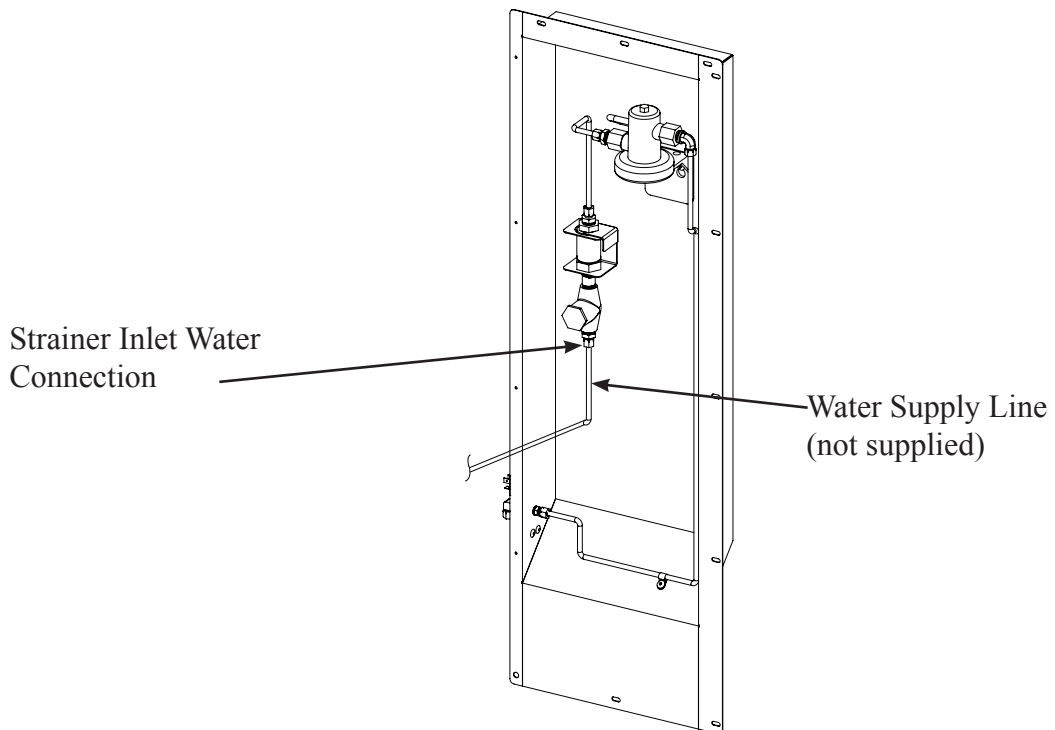
5. Install Backflow Preventer Assembly with strainer down using bracket & screws provided, as shown below.



6. Connect hose between Backflow Preventer and Filter Head. Tighten two compression nuts at water line fittings.

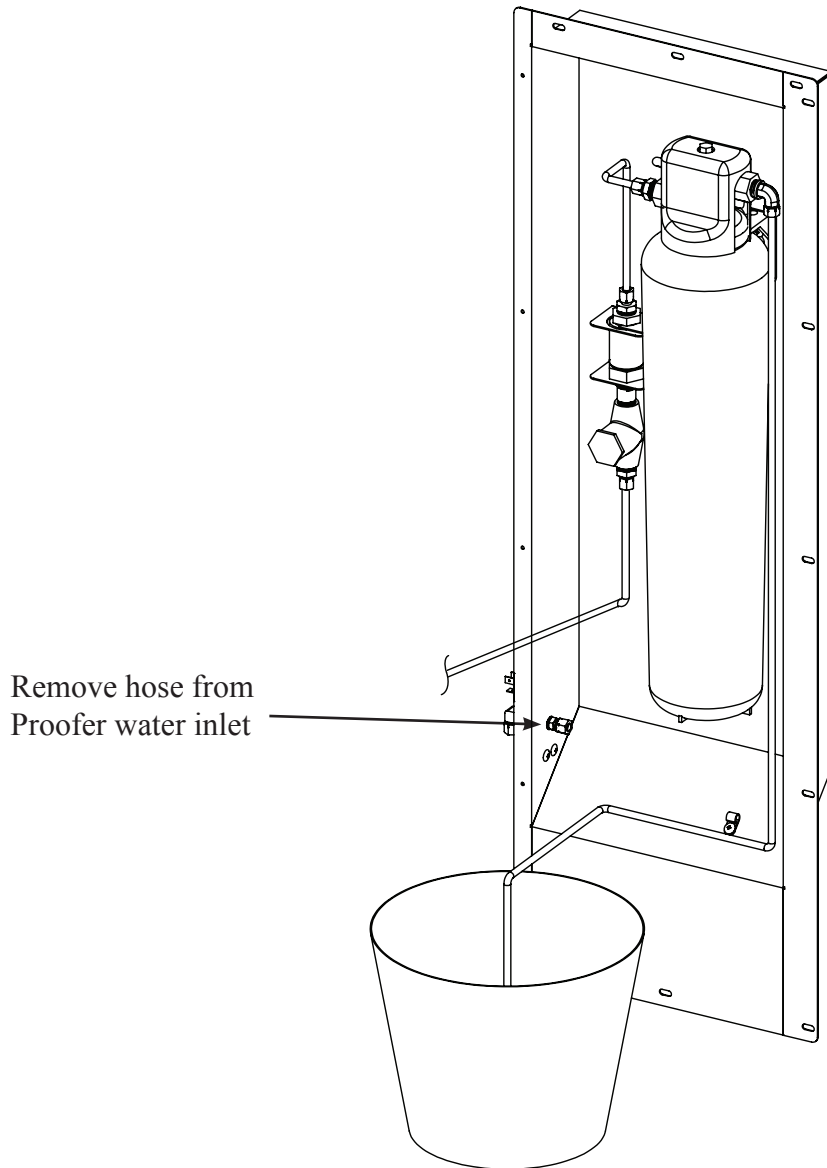


7. Attach water supply line to bottom of Strainer. Tighten compression nut at water line fitting.



8. Purge air from filter and water lines:

- Flush 2 gallons (5.6 liters) of water through the new filter before using proofer to purge air from filter. Remove hose from bottom of proofer at the proofer water inlet by loosening the compression nut at the disconnect fitting and pull hose out. Place hose over container and turn on water. It will take a minute for the filter to fill before water flows out of hose into container.
- Once filter is flushed with 2 gallons (5.6 liters) of water, turn off water supply again, insert hose into proofer water inlet, tighten compression nut and turn water supply on again. Check for water leaks at all connection fittings.

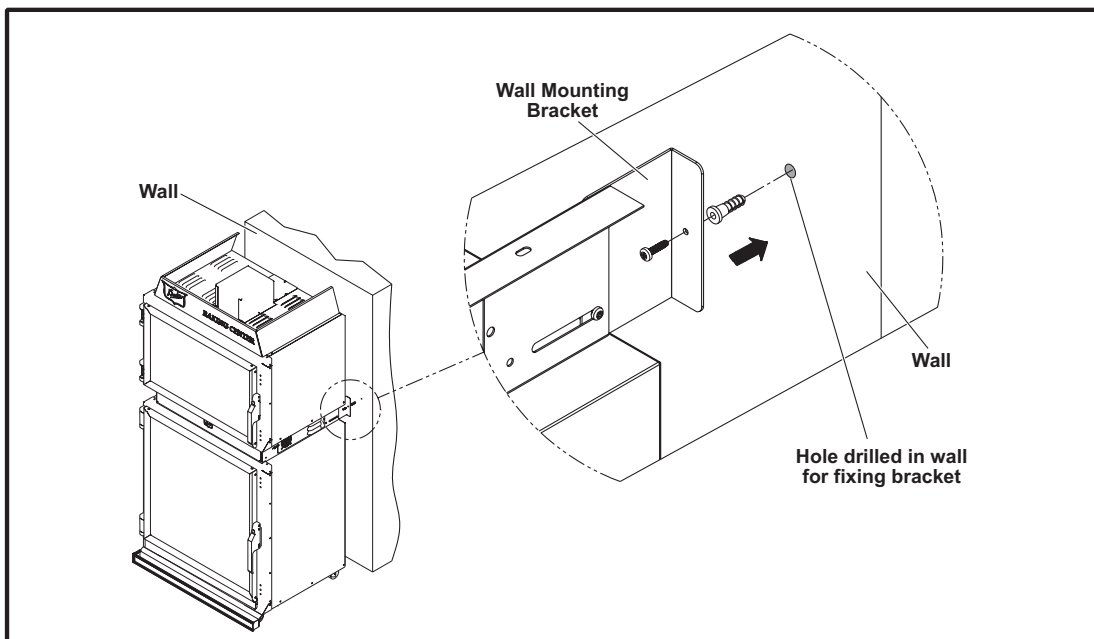


9. Reconnect Wall Brackets if they were installed.

INSTALLATION OF WALL-BRACKETS

NOTE: Verify interconnections and function prior to installing optional wall brackets

- Mount the Wall Mounting Brackets with screws provided with the Proofer Oven.
- Extend the Wall Mounting Bracket towards the wall by sliding it through the slot provided but do not tighten the screws.
- Mark the Wall & Drill holes for the wall anchors.
- Insert the wall anchors into the holes.
- Position the Wall Mounting Brackets against the wall.
- Insert the screws into the Wall Mounting Bracket.
- Ensure that the Brackets are firmly against the wall and tighten the screws securely.



10. Turn water supply on and check for water leaks at all connection fittings.

11. Turn unit power on at external mains supply disconnect and turn on Control Power Switch.



Notes:



Your Solutions Partner

Duke Manufacturing Co.

Duke Corporate, Canada, Latin America
2305 N. Broadway
St. Louis, MO 63102
Phone: 314-231-1130
Toll Free: 800-735-3853
Fax: 314-231-5074
www.dukemfg.com

Duke EMEA - Europe, Middle East, Africa, Russia
Duke Manufacturing CR, s.r.o.
Zdebradska 92
Jazlovice, Ricany
Building number DC 4 on the
ProLogis Park Prague D1 West
Prague 251 01
Czech Republic
Phone: +420 257 741 033
Fax: +420 257 741 039

Duke EMEA – UK, Ireland, Nordic Countries
Duke Manufacturing UK Ltd.
Unit 10, Greendale Business Park
Woodbury Salterton
Exeter, EX5 1EW
Phone: +44 (0) 1395 234140
Fax: +44 (0) 1395 234154

Duke Asia Pacific
Duke Manufacturing
No.3 Building
Lane 28, Yu Lv Road
Malu Town, Jiading District
Shanghai 201801, China
Phone: +86 21 59153525 / 59153526
Fax: +86 21 33600628