

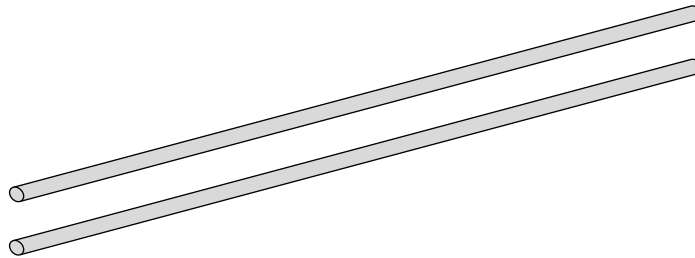


Your Solutions Partner

INSTALLATION INSTRUCTIONS

Blower Wheel Assembly Installation Instructions

Purpose: These instructions ensure proper spacing between the blower wheel assembly and the top of the welded oven cavity. These instructions are to help ensure the wheel assembly moves freely without any rubbing.



This kit contains:

- (2) Wooden 3/16" diameter spacers

Items required for this installation:

- 3/8" Square drive Breaker Bar or Ratchet
- 3/8" Square drive Socket, 4-point (preferred) or 8-point Std. 5/16" Sz.
- 3/8" Square drive Torque Wrench that gauges to at least 165 IN-LBS. (19Nm)
- External Jaw Gear Puller
- File

*This manual is Copyright © 2012 Duke Manufacturing Co. All rights reserved.
Reproduction without written permission is prohibited. Duke is a registered
trademark of the Duke Manufacturing Co.*

Duke Manufacturing Co.

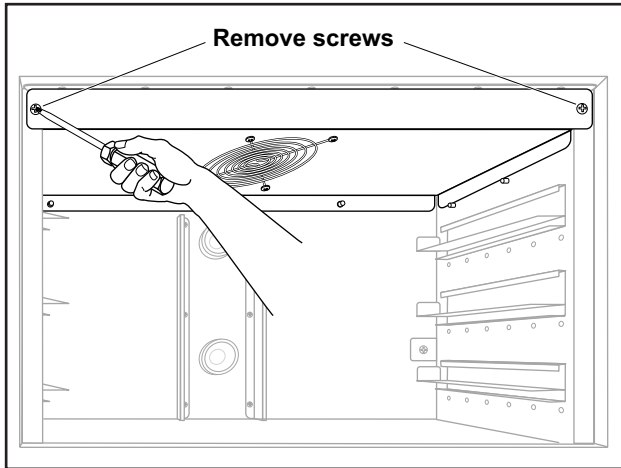
2305 N. Broadway
St. Louis, MO 63102
Phone: 314-231-1130
Toll Free: 1-800-735-3853
Fax: 314-231-5074

www.dukemfg.com

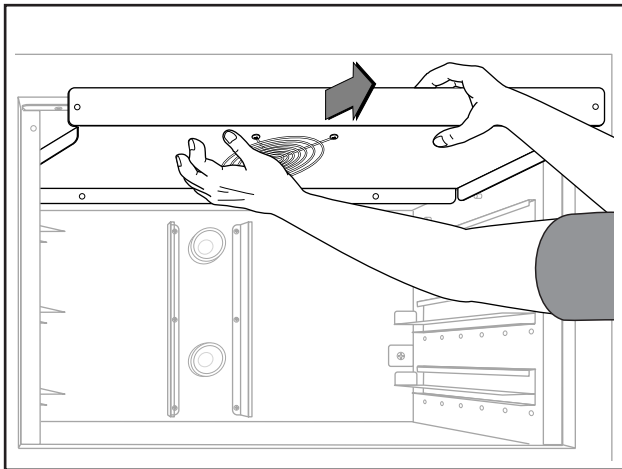
Blower Wheel Assembly Installation Instructions

Note: Oven Cavity must be below 100 degrees Fahrenheit (38 degrees Celsius) prior to kit installation.

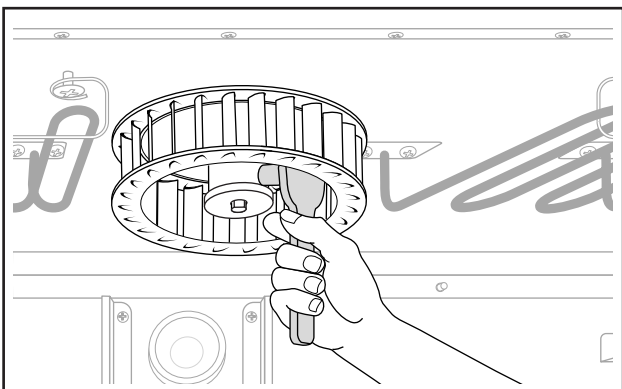
1. Remove two screws retaining the blower intake cover using a Phillips screwdriver.



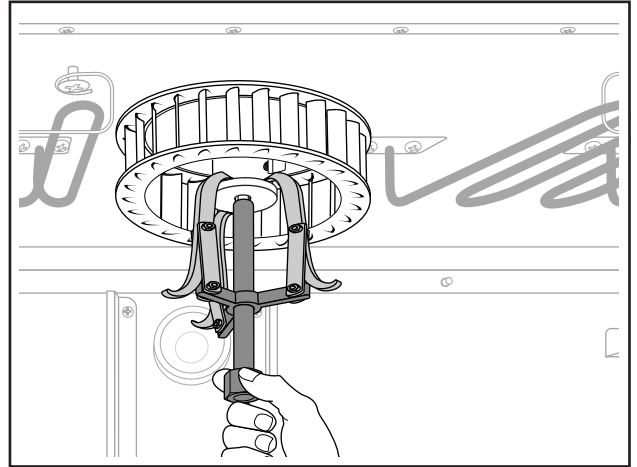
2. Remove blower intake cover by pulling outward. This piece may be difficult to remove as a snug fit is required for air flow management.



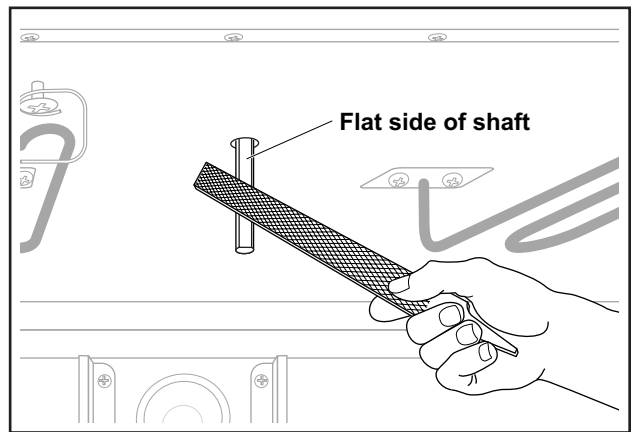
3. Using ratchet or breaker bar and socket loosen square head screw securing the blower wheel assembly.



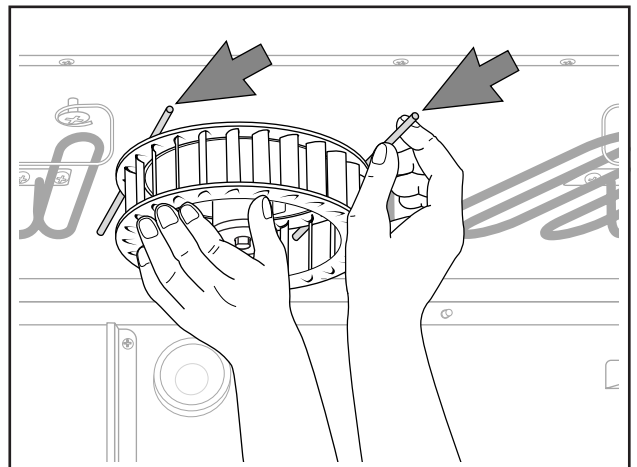
4. Use gear puller to remove blower wheel assembly from shaft.



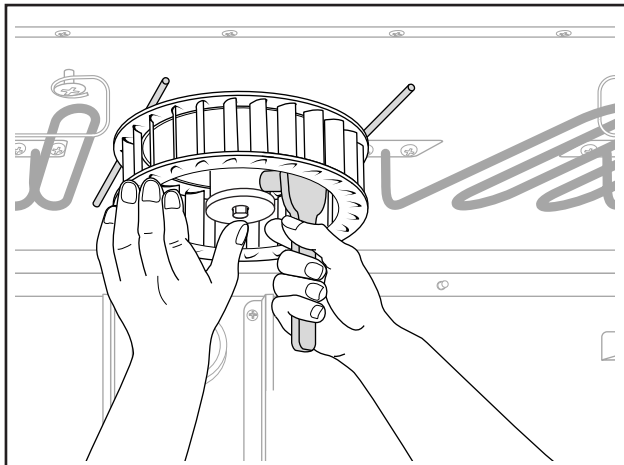
5. Use file to remove any burrs from the motor shaft. Try to make flat side of shaft as smooth as possible for easier installation of the blower wheel assembly.



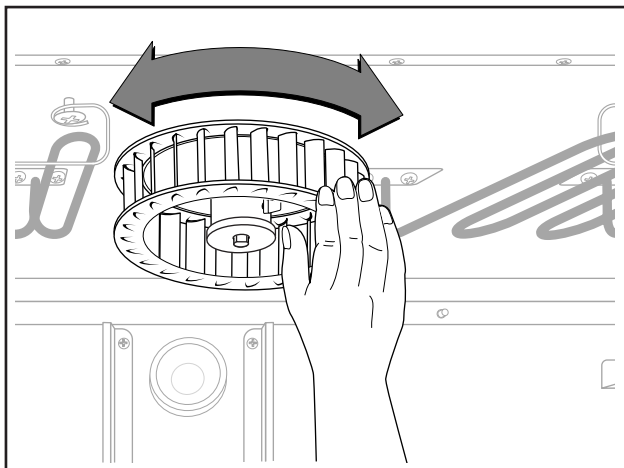
6. Install Blower wheel onto the shaft and place wooden dowel spacers on the left and right sides of the blower wheel. Place the dowel rods to the outer rim of the blower wheel for proper spacing.



7. Using torque wrench and socket tighten blower wheel assembly screw to 165 inch lbs. (19Nm)

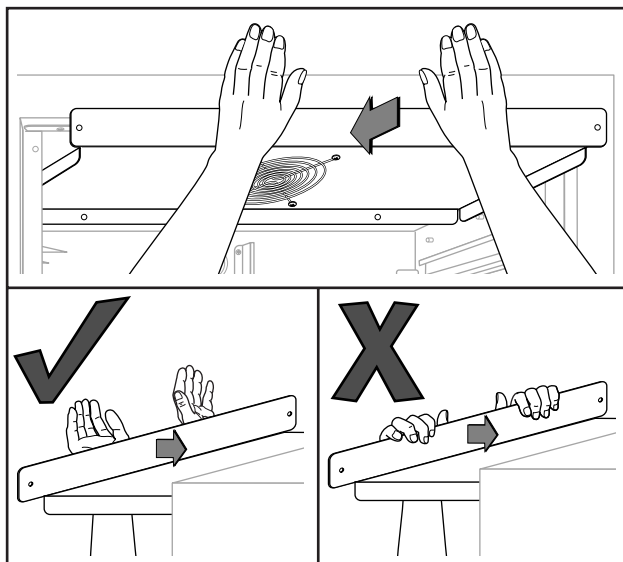


8. Remove wooden spacers after tightening the screw to the proper torque. Spin blower wheel to ensure the wheel doesn't rub anywhere and spins freely.

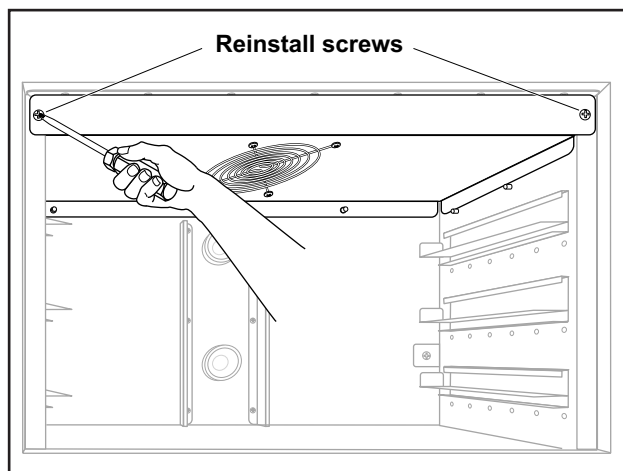


9. Reinstall blower intake cover. When cover engages pins push towards the rear with force to seat alignment seal.

CAUTION: Pinch point at top of blower intake cover and front frame.



10. Reinstall blower intake cover screws with a Phillips screwdriver.





Your Solutions Partner

Duke Manufacturing Co.

Duke Corporate, Canada, Latin America
2305 N. Broadway
St. Louis, MO 63102
Phone: 314-231-1130
Toll Free: 800-735-3853
Fax: 314-231-5074
www.dukemfg.com

Duke EMEA - Europe, Middle East, Africa, Russia
Duke Manufacturing CR, s.r.o.
Zdebradska 92
Jazlovice, Ricany
Building number DC 4 on the
ProLogis Park Prague D1 West
Prague 251 01
Czech Republic
Phone: +420 257 741 033
Fax: +420 257 741 039

Duke EMEA – UK, Ireland, Nordic Countries
Duke Manufacturing UK Ltd.
Unit 10, Greendale Business Park
Woodbury Salterton
Exeter, EX5 1EW
Phone: +44 (0) 1395 234140
Fax: +44 (0) 1395 234154

Duke Asia Pacific
Duke Manufacturing
No.3 Building
Lane 28, Yu Lv Road
Malu Town, Jiading District
Shanghai 201801, China
Phone: +86 21 59153525 / 59153526
Fax: +86 21 33600628