



3b) Pry the hinge block with a screw driver to loosen it.



4) Carefully lift the day cover from both sides as shown. Raise one end higher than the other, tilt enough so that the hinge block can work its way to the end glass opening. Remove the hinge block and maneuver day cover until clear of the unit.



5a) Once removed, inspect. Depending on the level of damage to the day cover, clamping may be required. (See Fig. 5b)

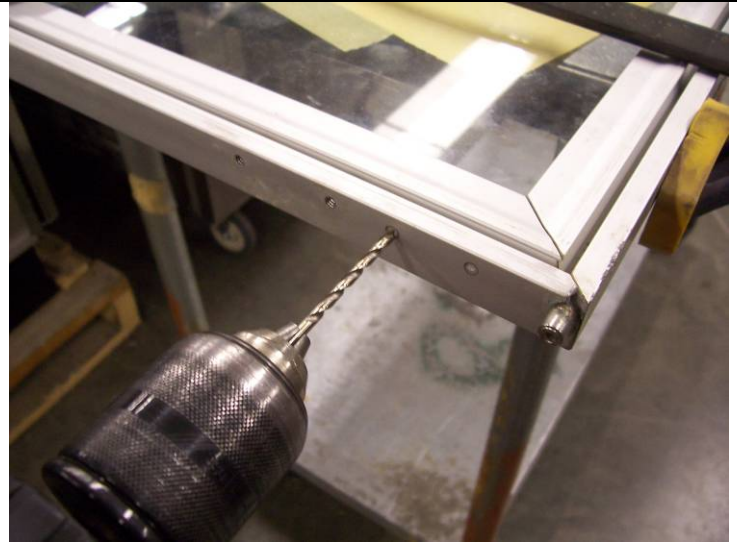


5b) Use a 24" or larger clamp to close the corner.

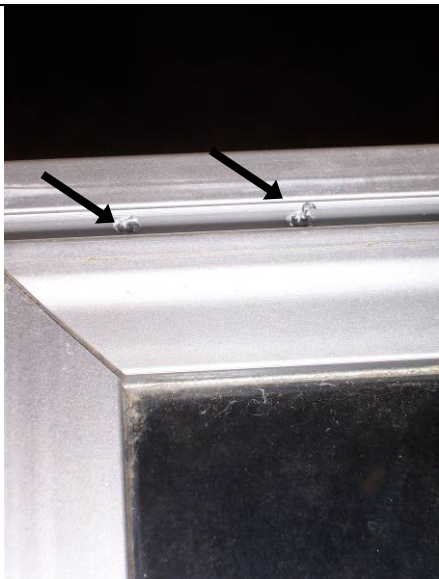


6a) While corner is held together put a reinforcement bracket in place and mark the location of the holes to be drilled. Repeat the same process for the other end.

Note: The brackets are made as a left and a right, make sure the correct bracket is placed on the correct end as shown. An incorrectly placed bracket will not be flush to the frame (See Fig. 7)



6b) Drill through the frame with the supplied #25 Drill bit until the drill has passed into the gasket groove (Make sure rubber gasket has been removed prior to drilling). Use caution and avoid contact with glass. Tap holes using supplied 10-24 UNC tap, use caution not to bottom the tap as it may break off in the hole or strip the threads.



6c) This close-up view shows the holes through the outer section of the frame and into the seal groove. DO NOT drill into the inner frame.



7) Place bracket over corner and secure in place with supplied 10-24 x 3/8" screws. **(See Section 9 for Loctite / Torque Instructions)** Re-install the removed rubber gasket.



8) Secure the hinge block to one side of the day cover frame. (The side that will be installed first.) **Make sure it is fully seated.** Reverse steps 1 through 4 to re-assemble cover and unit.



9) Loctite / Torque Instructions

Break open Loctite capsule, apply Loctite as shown to the new screws supplied with kit. The Loctite must cover at least three full threads all the way around the screw. Torque screws to 40in.lbs.