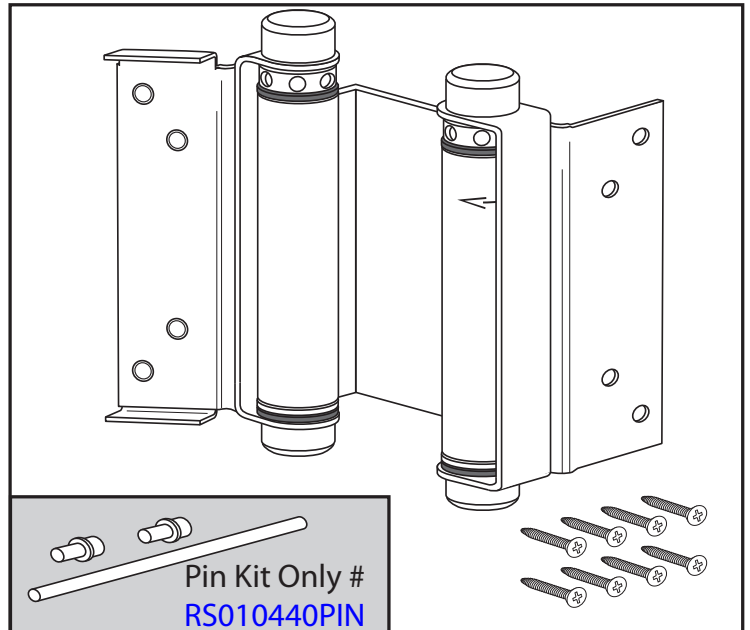
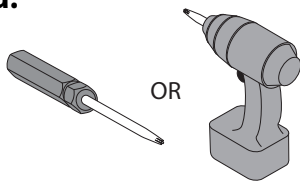




Your Solutions Partner

Swing Gate Hinge Replacement Hinge Kit # **RS010440** Pin Kit # **RS010440PIN**

Tools you will need:



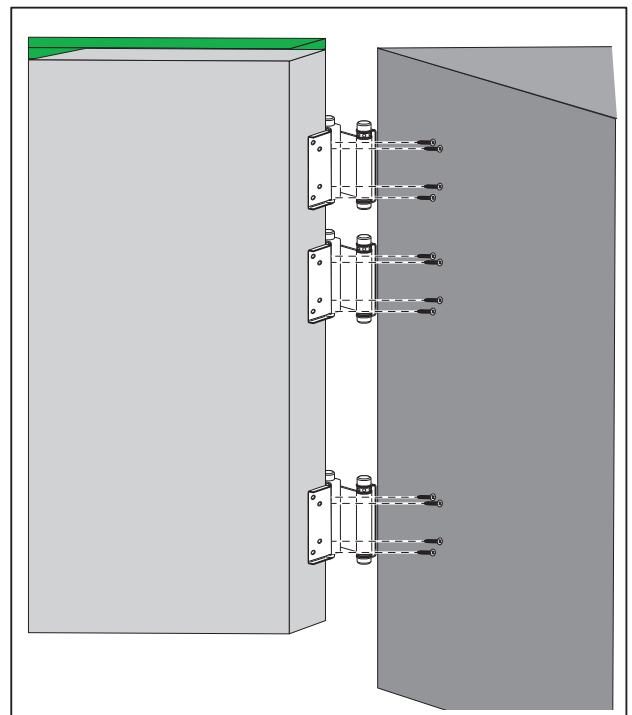
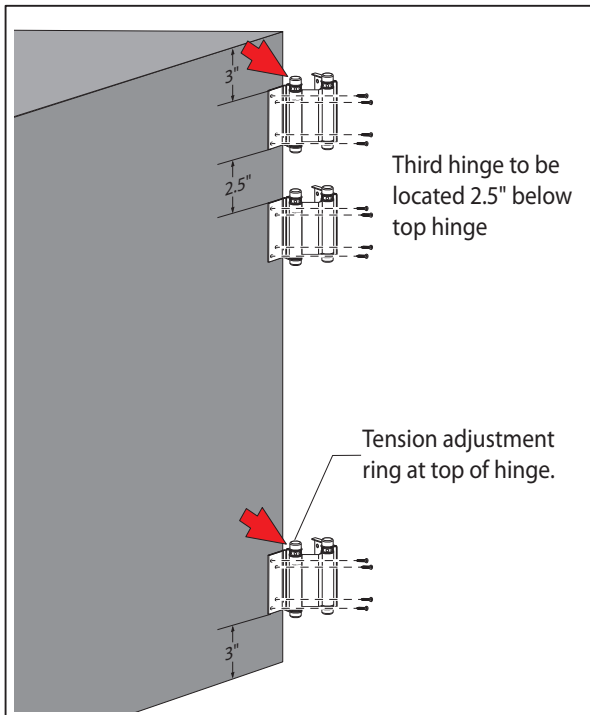
CAUTION: Please read these instructions completely before attempting to install, operate or service this equipment.

INSTALLATION INSTRUCTIONS

Step 1 Attach flat flange to wall or jam.

NOTE: Third hinge 2.5" below top hinge.

Step 2 Attach angled flange to gate.

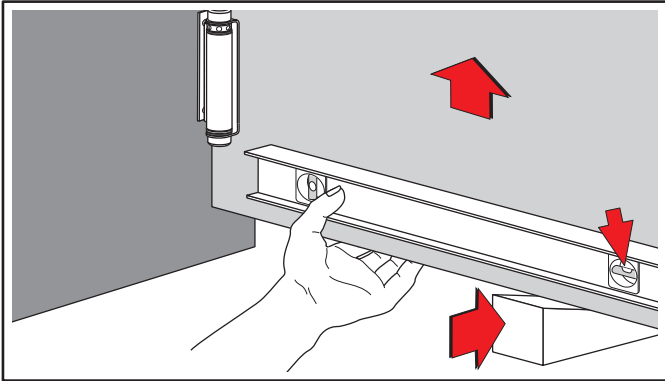


This manual is Copyright © 2020 Duke Manufacturing Co. All rights reserved.
Reproduction without written permission is prohibited. Duke is a registered trademark of the Duke Manufacturing Co.

P/N 229177
REV C 11/30/2020

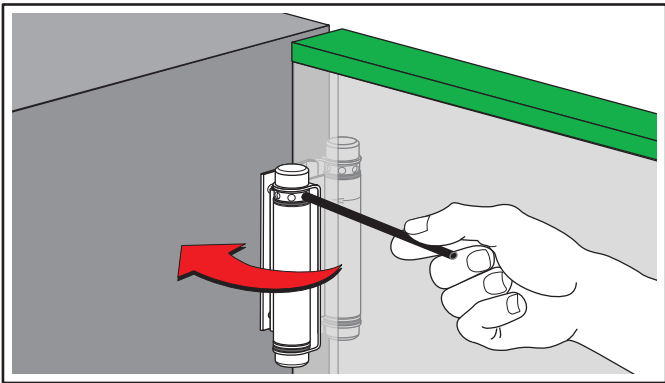
INSTALLATION INSTRUCTIONS

Step 3 Close gate. Insert wedge at bottom to level gate.

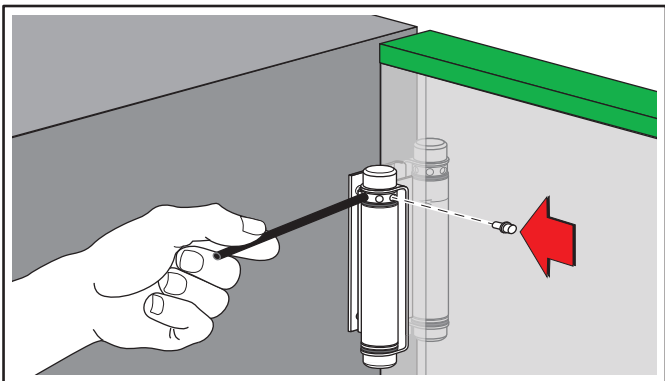


Step 4 On back side of gate, insert adjustment rod in tension adjustment ring and rotate ring clockwise to maintain gate level.

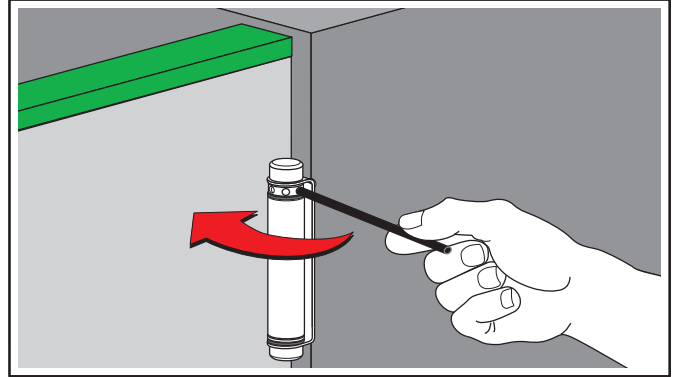
(Do not exceed (5) holes)



Step 5 Insert stop pin against flange.

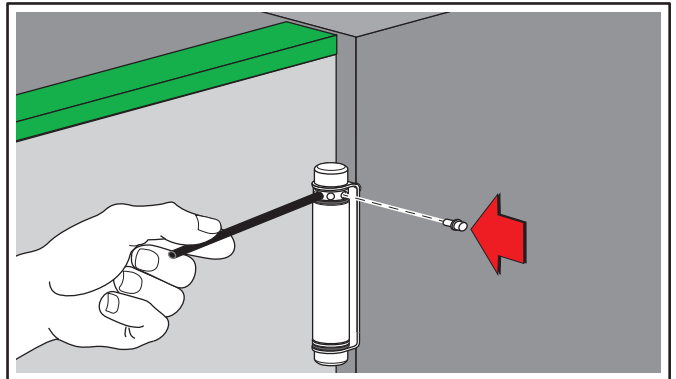


Step 6 Insert adjustment rod in front hinge.

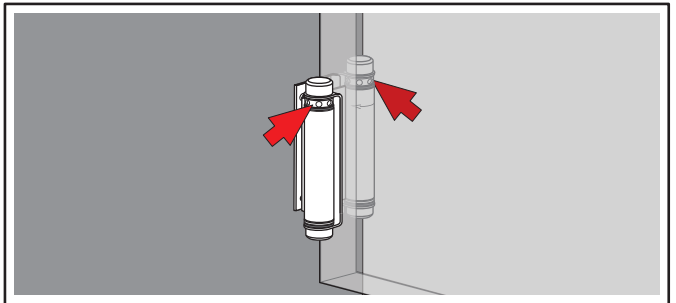


Step 7 Insert stop pin against flange.

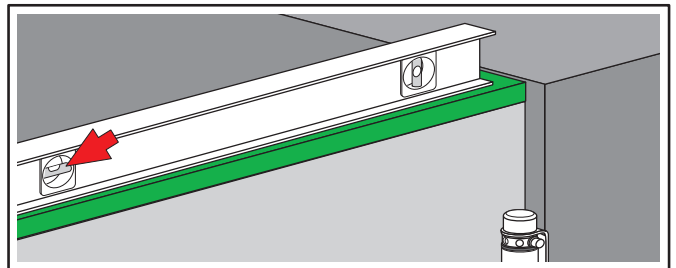
(Do not exceed (5) holes)



Step 8 Perform same procedure on bottom hinges **(Do not exceed (2) holes)**



Step 9 Check to make sure that gate is level.



Your Solutions Partner

Duke Manufacturing Co.

2305 N. Broadway
St. Louis, MO 63102

Phone: 314-231-1130

Toll Free: 1-800-735-3853

Fax: 314-231-5074

www.dukemfg.com