



Illustrated Parts List

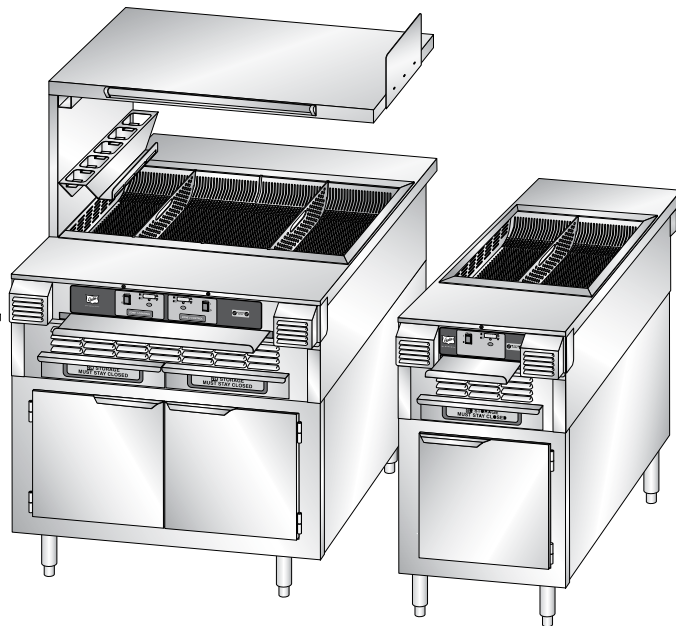
Your Solutions Partner

FRY HOLDING UNIT (FHU)

MODELS

FHU2 (FULL SIZE)

FHU1 (MINI)



*This manual is Copyright © 2015 Duke Manufacturing Co. All rights reserved.
Reproduction without written permission is prohibited. Duke is a registered
trademark of the Duke Manufacturing Co.*

Duke Manufacturing Co.

2305 N. Broadway • St. Louis, MO 63102

800.735.3853 • 314.231.1130

Fax: 314-231-5074

www.dukemfg.com

How to Determine Manufacture Date from Duke Equipment Serial Numbers

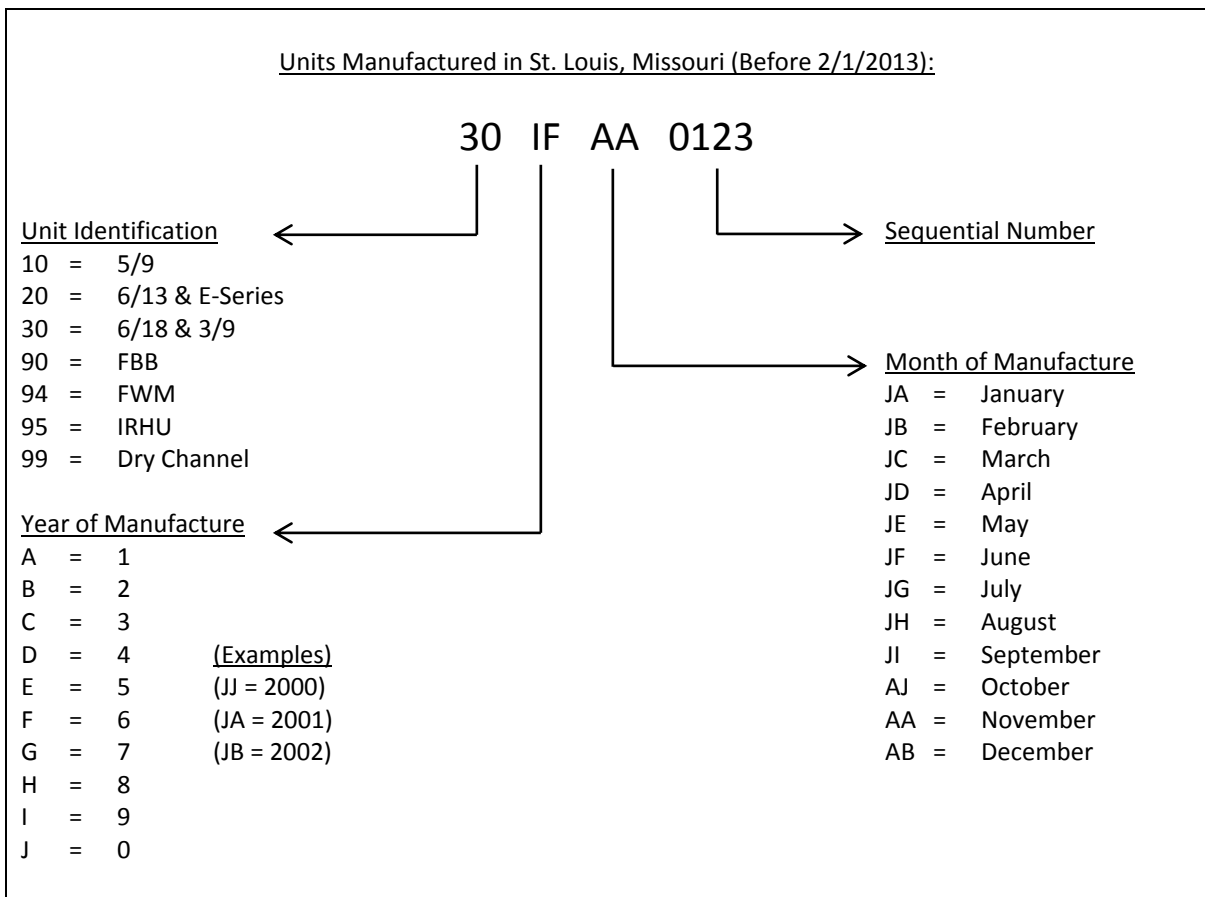
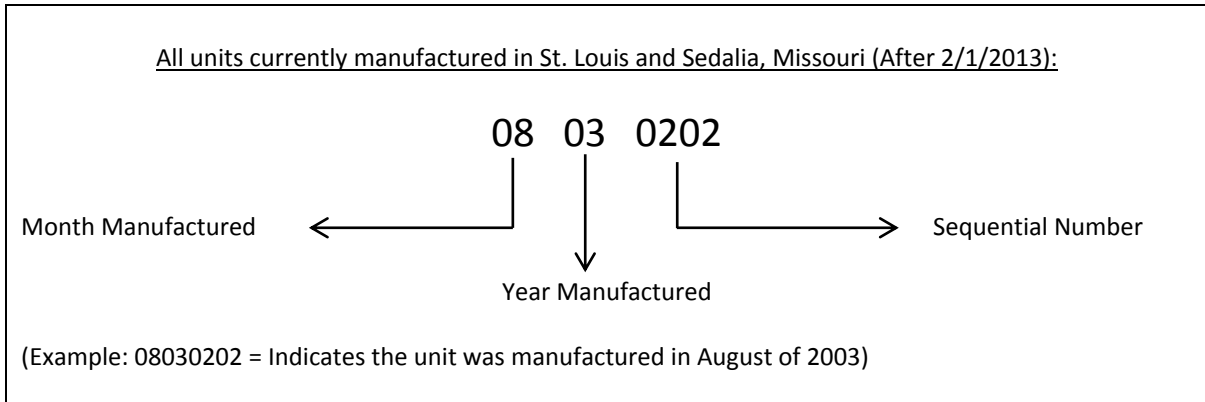


TABLE OF CONTENTS

FRY HOLDING UNIT – FHU2	4
Figure: PL-1 Fry Holding Unit – FHU2	4
Table: PL-1 Fry Holding Unit – FHU2	5
FRY HOLDING UNIT – FHU1	6
Figure: PL-2 Fry Holding Unit – FHU1	6
Table: PL-2 Fry Holding Unit – FHU1	7

FRY HOLDING UNIT – FHU2

ITEM	P/N	DESCRIPTION	QTY
1	214508	LEG, SS 1-5/8" x 6" ADJ.	4
2	255941	ASSY, BC HANDLE PAINTED	4
3	E020578	SHELF FRY CARTON	1
4	E020579	DIVIDER FRY STATION SHELF	3
5	212177	RECPT, ELEC 5-15 SINGLE HBL5261	1
6	212986	BREAKER, 15A DBL POLE #QOU215	1
7*	212995	BREAKER, SINGLE 1P 10A QOU110	1
8	212998	BREAKER, SQD 2P 20A QOU220	1
9	222602	BREAKER, SQD 2P 50A QOU250	1
10	222018	BLOCK, TERMINAL 3 CONN.	2
11	212994	BLOCK, TERMINAL 3 POLE 9080LBA361104	2
12*	212993	BLOCK, TERMINAL 2 POLE 9080LBA261104	2
13*	E050467	KIT, FHU, WIRE MAIN POWER, 208V 60HZ (222520, 222521 & 222522)	1
14	212022	RECPT, ELEC 5-15 DUPLEX	1
15	225855	DRIVER,LED, 24VDC 30W POWER SUPPLY 120V 60HZ	1
16	222180	PLATE ROCKER SWITCH UTILITY	1
17	212288	SWITCH,LIGHTED	1
18	212049	BOX, ELEC 670R 1/2" KO 2 1/8" X 4" 2 1/8" DEEP	1
19	212996	BREAKER, SINGLE 1P 15A QOU115	2
20	1033-128	PERFORATED DIVIDER, FRY STATION	2
21	413029	FULL SIZE BASKET, WELD TABS	1
22	225540	FILTER, ALUMINUM MESH FRY STATION	2
23	1033-117	MAGNET ANGLE, FRY STATION	2
24	1033-96	THERMO COUPLE BRACKET	4
25	225435	TYPE K THERMO COUPLE, FRY STATION WITH CONNECTORS	4
26	225424	SWITCH, SPDT 15 AMP, 3.5 OPERATING FORCE-BZ2RW82A2	2
27	1033-169	THERMOCOUPLE GUARD, FRY STATION	4
28	1033-168	SWITCH GUARD, FRY STATION	2
29	57100	CATCH, MAGNETIC	6
30	E050401	ASY, DUAL FANS W/ CALROD, H. LIMIT, GUARD, 208-240V	2
31	E050722	RH FAN ASSY WITHOUT HEATER	2
32	E050723	LH FAN ASSY WITHOUT HEATER	2
33	E050705	ASSY, CALROD HEATER REPLACEMENT 208-240V	4
34*	E050422	KIT, LH FAN ASSY W/CALROD HTR (After Serial #05143308)	2
35*	E050423	KIT, RH FAN ASSY W/CALROD HTR (After Serial #05143308)	2
36*	E050432	KIT, LH & RH FAN ASSY'S W/CALROD HTRS (After Serial #05143308)	2
37	E050532	KIT, JUMPER WIRE, FHU FANS & HTR	4
38	155753	THERMOSTAT, HI LIMIT FOR FOOD WARMER W/2" FLANG--SO SPECS (155753S-FS)	4
39*	154458	NUT, 8-32 HEX KEP ZINC CT WARMER	4
40*	223353	SCREW, 8-32 X 3/8 PPHTC S F W/THREAD LOCK	4
41	1033-520	GUARD, HIGH LIMIT, FHU	4
42	1033-72	HOUSING FRONT	1
43	1033-73	HOUSING BACK	1
44	E050086	SHELF, CONDIMENT STORAGE, FRY STATION	1
45	E050087	SHELF, DIVIDER, CONDIMENT STORAGE, FRY STATION	6
46	175503	SWITCH, LIGHTED DPST 16 AMP 125/250VAC UL CE	2
47	225427	RELAY, GEN. PURPOSE DPST 30 A 240V	2
48	600373	KIT, SSR / HEAT TRANSFER PAD, TSC-6/18M (120005 & 210598)	4
49	225425	DC POWER SUPPLY, FRY STATION (Ref - 222027 Fuse, Slow Burn, 2.5 A 250V)	2
50	222027	FUSE, SLOW BURN, 2.5 A 250V	2
51	225428	CONTROLLER, FRY STATION	2
52	225430	CONTROL PANEL FANS, FRY STATION	2
53*	225429	WIRE HARNESS, FRY STATION (THIS IS TO CONSIST OF #404-9905 A FRONT ELEMENTS, #404-9904 A REAR ELEMENTS, #404-9904 A REAR ELEMENTS, #404-9903 B TRIGGER & SPEED, #404-9902 D MOTORS TO CNTL and #404-9900 C MAIN AC)	2
54	225433	MYLAR, CONTROL, FRY STATION	1
55	120001	BLOCK, TERMINAL 4 POLE	1
56	412754	DRIP TRAY ASSEMBLY	2
57	225434	MYLAR, NO STORAGE, FRY STATION	2

* Not shown

Table: PL-1 Fry Holding Unit – FHU2

FRY HOLDING UNIT – FHU1

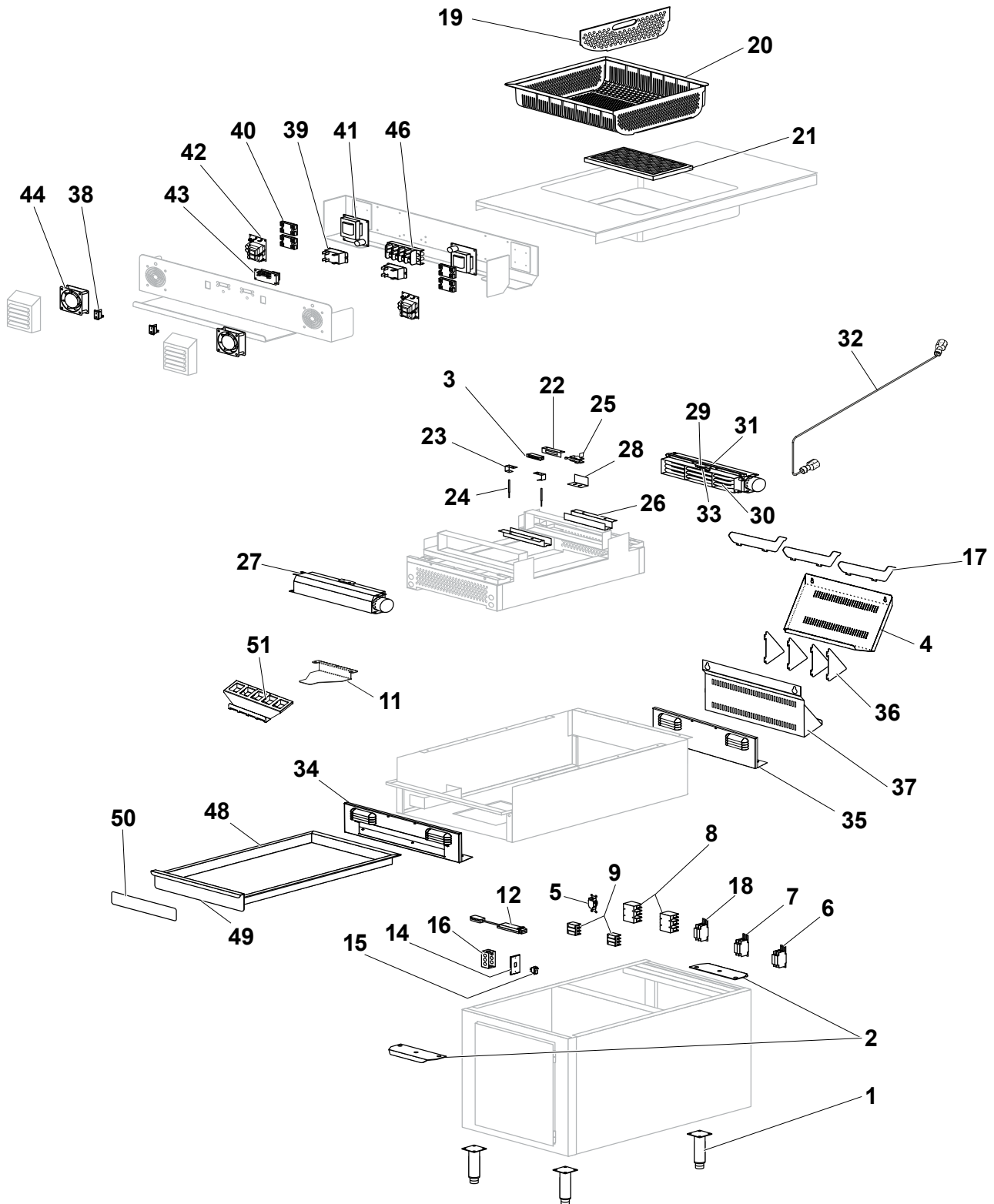


Figure: PL-2 Fry Holding Unit – FHU1

FRY HOLDING UNIT – FHU1

ITEM	PN	DESCRIPTION	QTY
1	214508	LEG, SS 1-5/8" x 6" ADJ.	4
2	255941	ASSY, BC HANDLE PAINTED	2
3	57100	CATCH, MAGNETIC	2
4	E050072	MINI FRY CARTON SHELF	1
5	212177	RECPT, ELEC 5-15 SINGLE HBL5261	1
6	212995	BREAKER, SINGLE 1P 10A QOU110	1
7	212989	BREAKER, SQD 2P 30A QOU230	1
8	222018	BLOCK, TERMINAL 3 CONN.	2
9	212994	BLOCK, TERMINAL 3 POLE 9080LBA361104	2
10*	212993	BLOCK, TERMINAL 2 POLE 9080LBA261104	2
11	E050050	FRY SCOOP HOLDER, LARGE SIDE	1
12	225855	DRIVER, LED,24VDC 30W POWER SULLPY 120V 60HZ	1
13*	E050467	KIT, FHU, WIRE MAIN POWER, 208V 60HZ (222520, 222521 & 222522)	1
14	222180	PLATE ROCKER SWITCH UTILITY	1
15	212288	SWITCH, LIGHTED	1
16	212049	BOX, ELEC 670R 1/2" KO 2 1/8" X 4" 2-1/8" DEEP	1
17	E020579	DIVIDER FRY STATION SHELF	3
18	222602	BREAKER, 15A DBL POLE #QOU215	1
19	1033-128	PERFORATED DIVIDER, FRY STATION	1
20	413048	HALF SIZE FRY BASKET W/ WELD TABS	1
21	225540	FILTER, ALUMINUM MESH FRY STATION	1
22	1033-117	MAGNET ANGLE, FRY STATION	2
23	1033-96	THERMO COUPLE BRACKET	2
24	225435	TYPE K THERMO COUPLE, FRY STATION WITH CONNECTORS	2
25	225424	SWITCH, SPDT 15 AMP, 3.5 OPERATING FORCE-BZ2RW82A2	1
26	1033-169	THERMOCOUPLE GUARD, FRY STATION	2
27	E050722	RH FAN ASSY WITHOUT HEATER	2
28	1033-168	SWITCH GUARD, FRY STATION	1
29	1033-520	GUARD, HIGH LIMIT, FHU	2
30	E050705	ELEMENT, CALROD 240V 2250 WATTS	2
31	E050423	KIT, RH FAN ASSY W/CALROD HTR (After Serial #05143308)	2
32	E050532	KIT, JUMPER WIRE, FHU FANS & HTR	2
33	155753	THERMOSTAT, HI LIMIT FOR FOOD WARMER W/2" FLANG--SO SPECS (155753S-FS)	2
34	1033-187	HOUSING FRONT HALF SIZE FRY STATION	1
35	1033-188	HOUSING BACK HALF SIZE FRY STATION	1
36	E050087	SHELF, DIVIDER, CONDIMENT STORAGE, FRY STATION	4
37	E050088	CONDIMENT STORAGE SHELF, MINI FRY	1
38	175503	SWITCH, LIGHTED DPST 16 AMP 125/250VAC UL CE	1
39	225427	RELAY, GEN. PURPOSE DPST 30 A 240V	1
40	600373	KIT, SSR / HEAT TRANSFER PAD, TSC-6/18M (120005 & 210598)	2
41	225425	DC POWER SUPPLY, FRY STATION	1
42	222027	FUSE, SLOW BURN, 2.5 A 250V (REF - 225425)	1
43	225428	CONTROLLER, FRY STATION	1
44	225430	CONTROL PANEL FANS, FRY STATION	2
45*	225429	WIRE HARNESS, FRY STATION (THIS IS TO CONSIST OF #404-9905 A FRONT ELEMENTS, #404-9904 A REAR ELEMENTS, #404-9903 B TRIGGER & SPEED, #404-9902 D MOTORS TO CNTL and #404-9900 C MAIN AC)	1
46	120001	BLOCK, TERMINAL 4 POLE	1
47*	225780	LABEL, CONTROL, MYLAR MINIFRY	1
48	1033-195	DRIP PAN HALF SIZE FRY STATION	1
49	1033-69	DRIP TRAY FACE	1
50	225434	MYLAR, NO STORAGE, FRY STATION	1
51	E020747	BOX FRY CARTON HOLDER	1

* Not shown

Table: PL-2 Fry Holding Unit – FHU1

NOTES

NOTES



“Your Solutions Partner”

Duke Manufacturing Company

**2305 N. Broadway
St. Louis, MO 63102
Phone: 314-231-1130
Toll Free: 1-800-735-3853
Fax: 314-231-5074
www.dukemfg.com**