

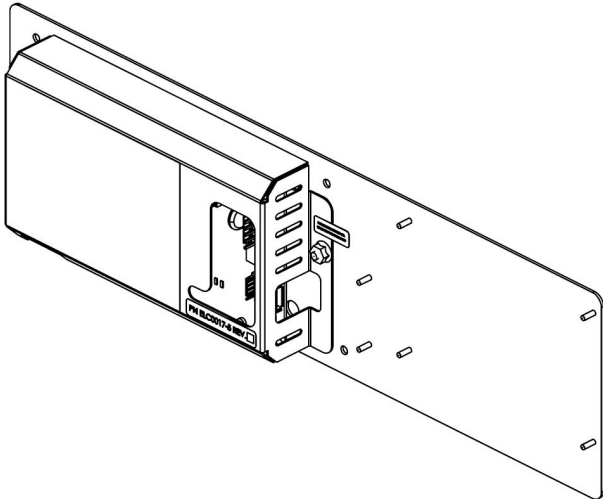


Your Solutions Partner

# Instruction Sheet

FLEX BAKE 5™ ELC0017-5 DUKE KIT# 600521

## Parts in Kit 600521



ELC0017-5 TSC Control, Flex Bake 5



512418 Strap, Disposable Wrist ESD

## Tools Needed



1/4" Nut Driver



11/32" Nut Driver



Phillips Screw Driver



Small Electronic Phillips

**CAUTION:** Please read these instructions completely before attempting to install, operate or service this equipment.

 **WARNING:** Cancer and Reproductive Harm - [www.p65warnings.ca.gov](http://www.p65warnings.ca.gov)

*This manual is Copyright © 2020 Duke Manufacturing Co. All rights reserved. Reproduction without written permission is prohibited. Duke is a registered trademark of the Duke Manufacturing Co.*

**P/N 514149  
REV B 03/19/2020**

# ELC0017-5 Replacement Instructions

**⚠ WARNING HAZARDOUS VOLTAGE**

**⚠ CAUTION RISK OF ELECTRIC SHOCK**

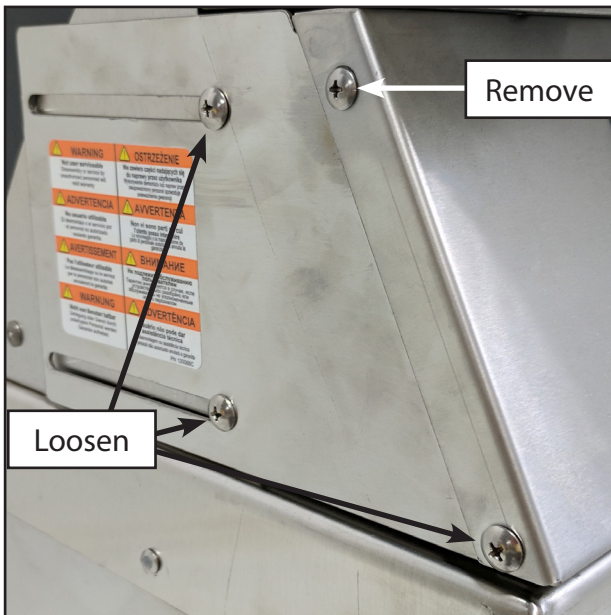
- 1 Turn OFF the unit's Power.  
Disconnect unit from Mains Supply Voltage using lockout / tag out procedures.

**Reference: LOCKOUT / TAG OUT PROCEDURE**

- The worker shall check to be sure that no one is operating the machinery BEFORE turning -off the power. The machine operator shall be informed before the power is turned off. Sudden loss of power could cause an accident.
- All energy sources that could activate the machine shall be locked out (blocked/tagged).
- The main valve or main electrical disconnect shall be tested to be sure that the power to the machine is off.
- Electrical circuits shall be checked with proper and calibrated electrical testing equipment.
- An electrical failure could energize the equipment even if the switch is in the off position.

- 2 Gain access to the front control panel:
  - Loosen, but do not remove the bottom and rear screws located in the large slots.
  - Remove the top left and right screws.

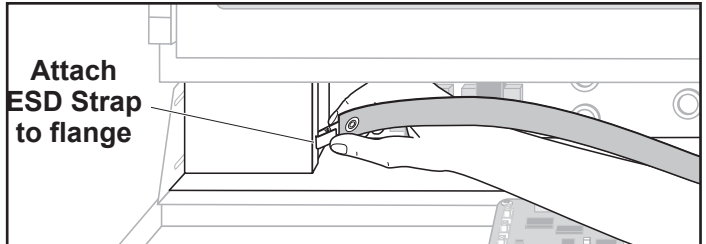
**Note:** Put screws in a safe place for later.



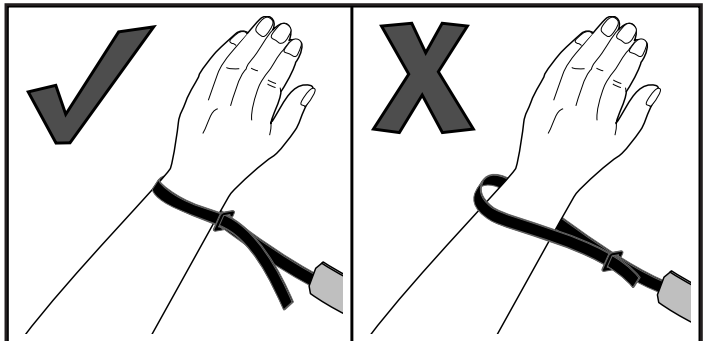
- 3 Slide the control panel forward and tilt down the control panel.

- 4 Connect ESD Wrist strap to Unit.

**⚠ CAUTION** Not following ESD protocol could damage electronic components.

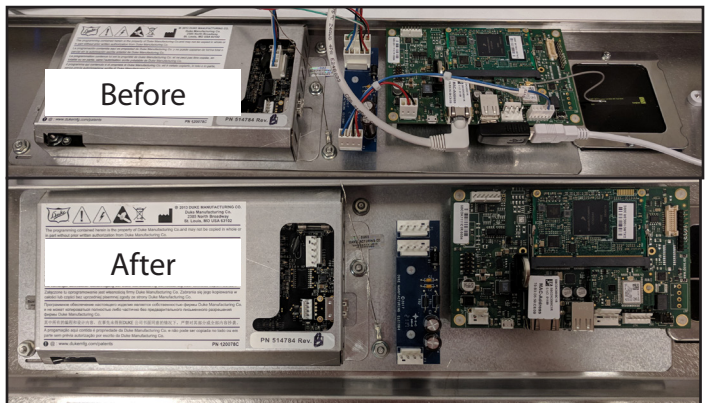


- 5 Place ESD strap on wrist and tighten. Strap must be tight around wrist to be effective.



- 6 Disconnect all the wire harnesses from the assembly including the wireless antenna wire.

**Note:** You may want to take a picture for later reference.



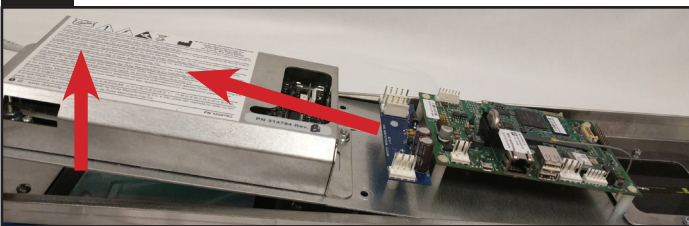
# ELC0017-5 Replacement Instructions - continued

**7** Remove the four nuts holding the assembly.

**CAUTION** Do not remove the nuts holding the cover of the control box. Save nuts for later use.



**8** Lift and slide out assembly.



**9** Carefully remove the new ELC0017-5 PCB from its packaging and set on a nonconductive surface.

**CAUTION** Make sure you are still grounded with an ESD Strap.



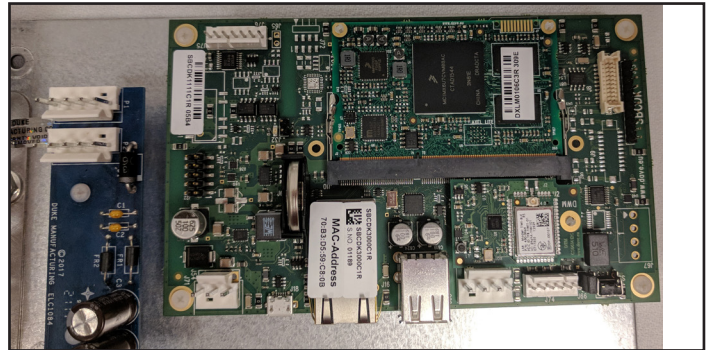
**10** Transfer the small PCB to the new ELC0017-5 assembly.

**Note:** MAKE SURE ORIENTATION IS CORRECT. DO NOT OVER TIGHTEN SCREWS

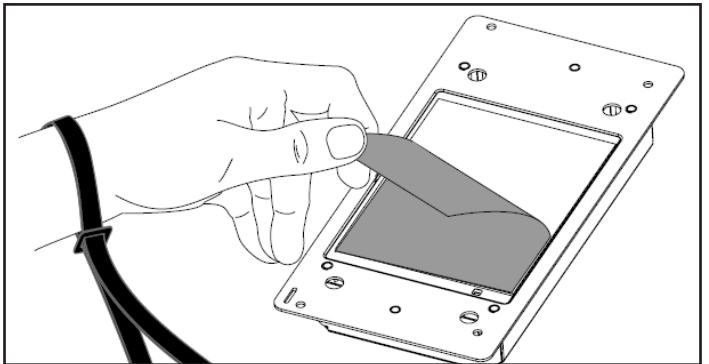


**11** Transfer the large PCB to the new ELC0017-5 assembly.

**Note:** MAKE SURE ORIENTATION IS CORRECT. DO NOT OVER TIGHTEN SCREWS



**12** A display glass protector must be removed from the new ELC0017-5 assembly display glass before installing. The protector is a clear transparent plastic layer over the glass which is easily removed by hand.



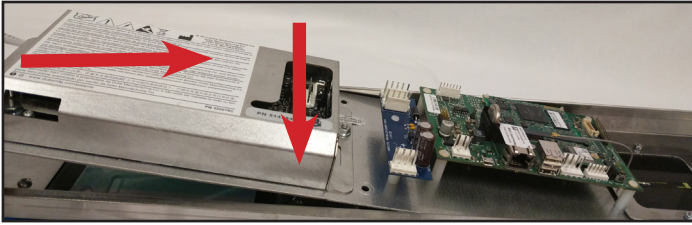
**13** To prevent static cling between the display and overlay, lightly dust the display glass with baby powder or talc powder. (not provided) Gently remove powder by brushing with a cosmetic brush (as shown to right).

**CAUTION**

Do not wipe the display with hands or any cloth as this may scratch the glass. Additionally, do not put any powder on the overlay.

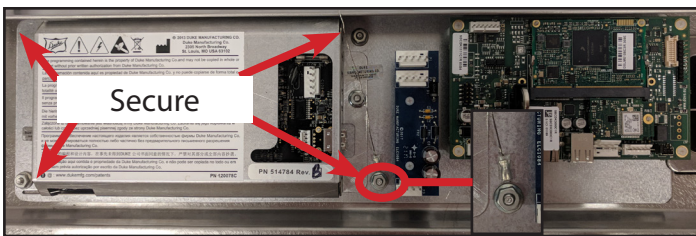


- 14** Slide the assembly into place making sure it is under the bracket holding the wireless antenna.

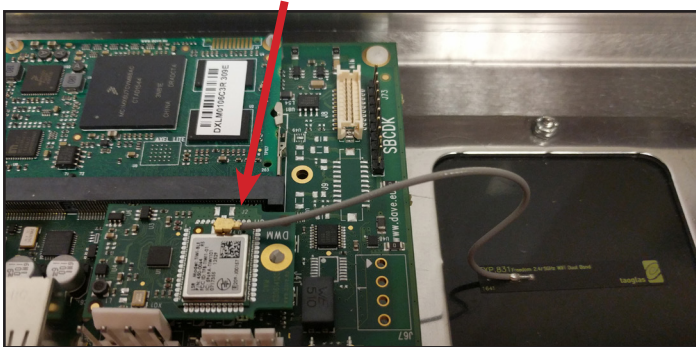


- 15** Secure the assembly in place using the four nuts removed in step 8.

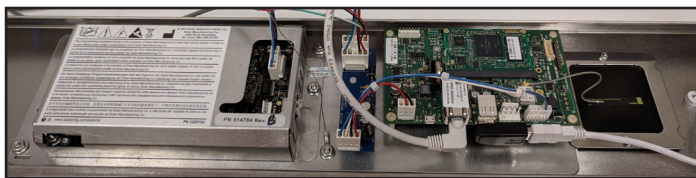
 **Note: Make sure you secure the grounding wire from the wire harness.**



- 16** Connect the thin wire from the wireless antenna to the PCB Board.





- 17** Using Unit's wire diagram re-install wire harnesses removed in step 6 including the wireless antenna wire.

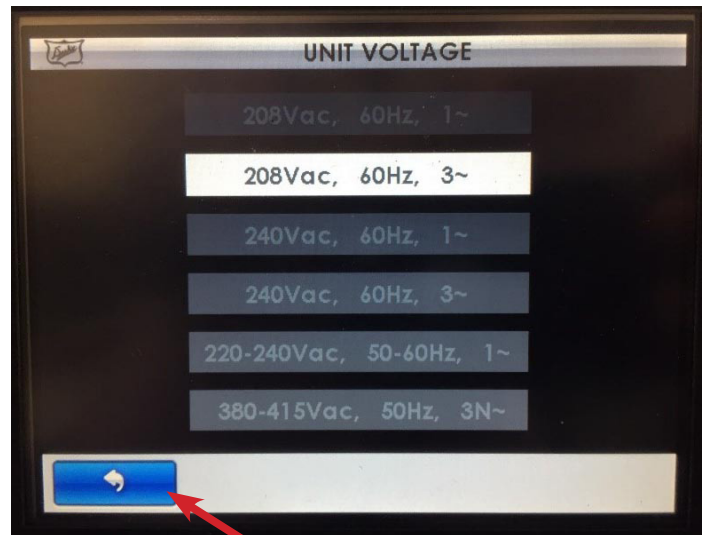


- 18** Dis-connect ESD Wrist strap from Unit.


- 19** Slide the control panel back into position and re secure the control panel.

- 20** Re-install the two screws removed in step 2.
- 21** Remove all lockout/tag out and turn unit on.
- 22** Measure incoming voltage to oven and confirm it matches the rating on the oven data tag
- 23** Press  icon to enter the Special Functions screen
- 24** Press "Factory" and enter PIN 9898
- 25** Press "Unit Voltage" and select voltage specification from list.

 **This should match the measured voltage and the data tag voltage**



- 26** Press the back arrow until display is back on the main menu screen.
- 27** Run unit for several cycles to make sure unit is properly functioning.

 **Note: If unit detects the software on the installed PCB is not compatible with current version in the system, it will automatically initiate an update to the system on power cycle and boot.**

