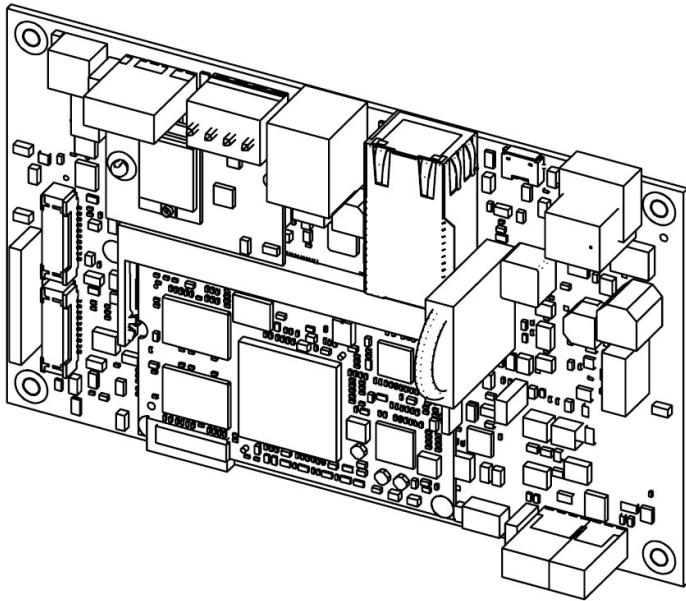




Your Solutions Partner

INSTALLATION INSTRUCTIONS

FLEX BAKE 5™ ELC0221
DUKE KIT# 600522



Tools required for this installation:

- Phillips Screw Driver
- Small Electronic Phillips Screw Driver



This kit contains:

- ELC0221 PCB DEB Programmed
- [512418](#) Strap, Disposable Wrist ESD

*This manual is Copyright © 2017 Duke Manufacturing Co. All rights reserved.
Reproduction without written permission is prohibited. Duke is a registered
trademark of the Duke Manufacturing Co.*

Duke Manufacturing Co.

2305 N. Broadway
St. Louis, MO 63102
Phone: 314-231-1130
Toll Free: 1-800-735-3853
Fax: 314-231-5074
www.dukemfg.com

P/N 514150
REV A 12/20/2017

ELC0221 PCB DEB Replacement Instructions

⚠ WARNING HAZARDOUS VOLTAGE

⚡ CAUTION RISK OF ELECTRIC SHOCK

Step 1

Turn OFF the unit's Power.

Disconnect unit from Mains Supply Voltage using lockout / tagout procedures.

Reference: LOCKOUT / TAGOUT PROCEDURE

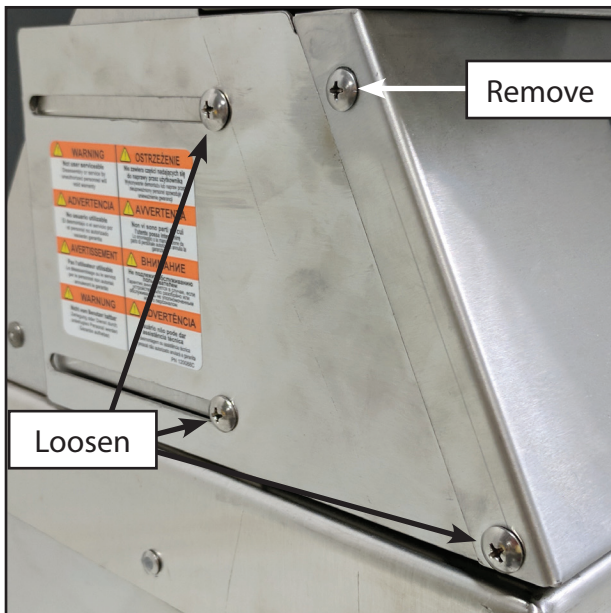
- The worker shall check to be sure that no one is operating the machinery BEFORE turning -off the power. The machine operator shall be informed before the power is turned off. Sudden loss of power could cause an accident.
- All energy sources that could activate the machine shall be locked out (blocked/tagged).
- The main valve or main electrical disconnect shall be tested to be sure that the power to the machine is off.
- Electrical circuits shall be checked with proper and calibrated electrical testing equipment.
- An electrical failure could energize the equipment even if the switch is in the off position.

Step 2

Gain access to the front control panel:

- Loosen, but do not remove the bottom and rear screws located in the large slots.
- Remove the top left and right screws.

Note: Put screws in a safe place for later.



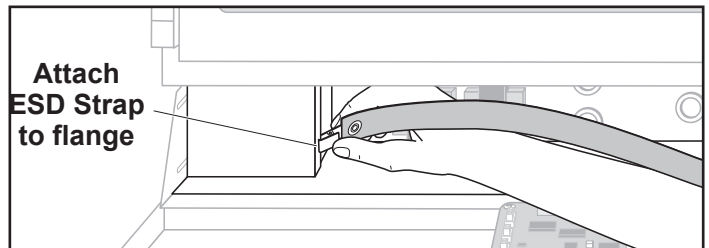
Step 3

Slide the control panel forward and tilt down the control panel.

Step 4

Connect ESD Wrist strap to Unit.

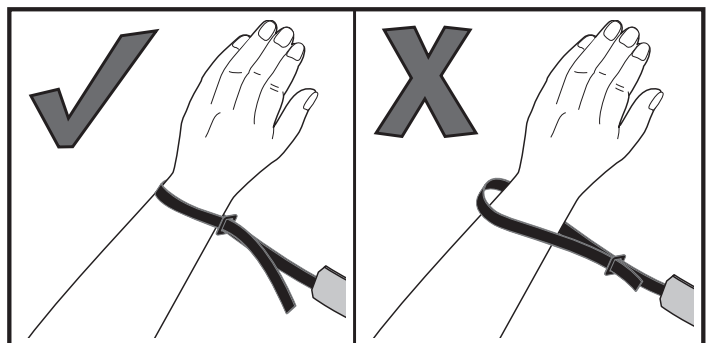
⚠ CAUTION Not following ESD protocol could damage electronic components.



Step 5

Place ESD strap on wrist and tighten.

- Strap must be tight around wrist to be effective.

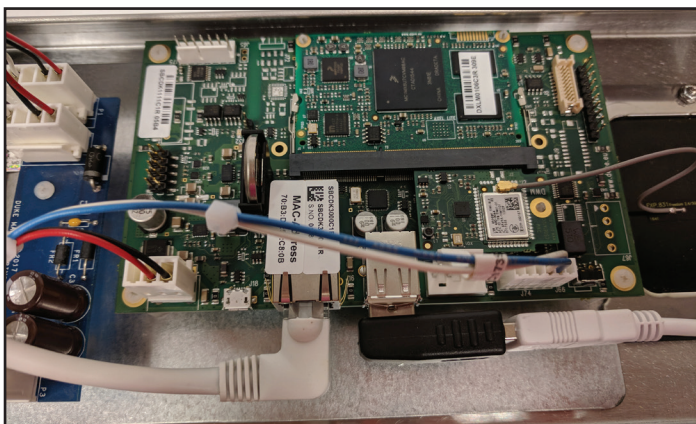


Your Solutions Partner

ELC0221 PCB DEB Replacement Instructions - cont.

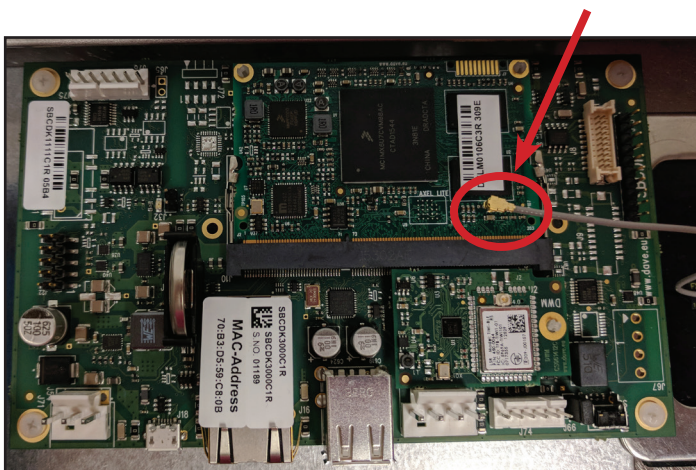
Step 6

Locate the ELC0221 PCB.



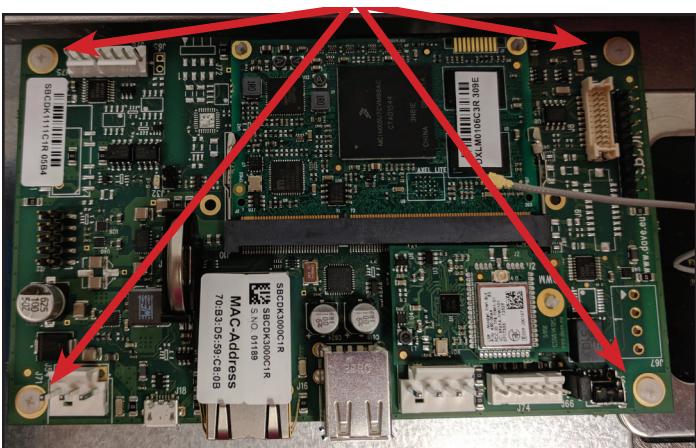
Step 7

Disconnect all wireless antenna from the board.



Step 8

Using a small electronic phillips screw driver, remove the four screw holding the board down.



NOTE:

Make sure you save the screws to reattach new board

Step 9

Carefully remove the new ELC0221 PCB from it's packaging.

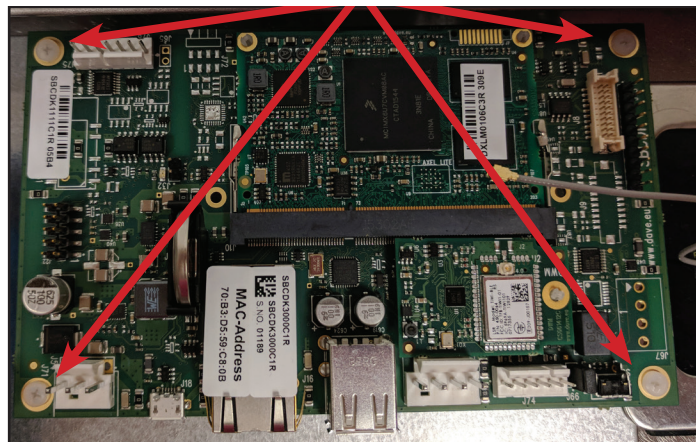
CAUTION

Make sure you are still grounded with an ESD Strap.

Step 10

Using the four plastic screws re-mount the new ELC0221 PCB Board.

Note: Do not over tighten screws



Step 11

Re-connect all wire harnesses to the board.

Note: Remember wireless antenna wire.



Step 12

Dis-connect ESD Wrist strap from Unit.

Step 13

Slide the control panel back into position and resecure the control panel.

Step 14

Re-install the two screws removed in step 2.

Step 15

Remove all lockout/tagout and turn unit on.



ELC0221 PCB DEB Replacement Instructions - cont.

Step 16

Run unit for several cycles to make sure unit is properly functioning.

NOTE: If unit detects the software on the installed PCB is not compatible with current version in the system, it will automatically initiate an update to the system on power cycle and boot.

NOTES



Your Solutions Partner

Duke Manufacturing Co.

2305 N. Broadway

St. Louis, MO 63102

Phone: 314-231-1130

Toll Free: 1-800-735-3853

Fax: 314-231-5074

www.dukemfg.com