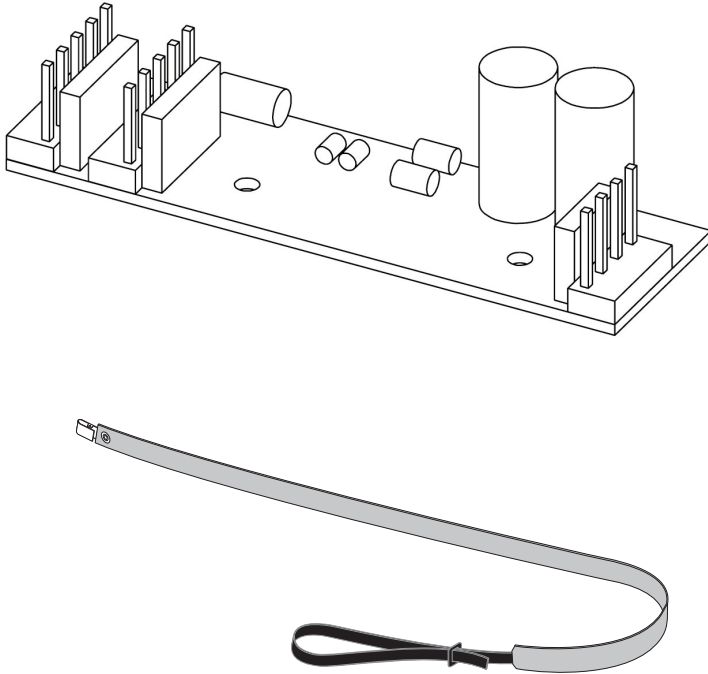




Your Solutions Partner

# INSTALLATION INSTRUCTIONS

FLEX BAKE 5™ ELC1084  
DUKE KIT# 600524



This kit contains:

- ELC1084 PCB Filter
- [512418](#) Strap, Disposable Wrist ESD

Tools required for this installation:

- Phillips Screw Driver
- Small Electronic Phillips Screw Driver

---

*This manual is Copyright © 2017 Duke Manufacturing Co. All rights reserved.  
Reproduction without written permission is prohibited. Duke is a registered  
trademark of the Duke Manufacturing Co.*

## Duke Manufacturing Co.

2305 N. Broadway  
St. Louis, MO 63102  
Phone: 314-231-1130  
Toll Free: 1-800-735-3853  
Fax: 314-231-5074

[www.dukemfg.com](http://www.dukemfg.com)

---

P/N 514152  
REV A 12/20/2017

# ELC1084 PCB Replacement Instructions

**⚠ WARNING HAZARDOUS VOLTAGE**

**⚡ CAUTION RISK OF ELECTRIC SHOCK**

## Step 1

Turn OFF the unit's Power.

Disconnect unit from Mains Supply Voltage using lockout / tagout procedures.

### Reference: LOCKOUT / TAGOUT PROCEDURE

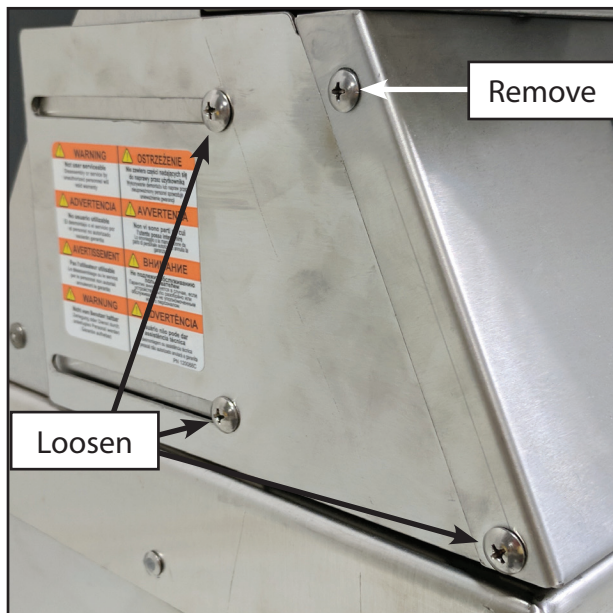
- The worker shall check to be sure that no one is operating the machinery BEFORE turning -off the power. The machine operator shall be informed before the power is turned off. Sudden loss of power could cause an accident.
- All energy sources that could activate the machine shall be locked out (blocked/tagged).
- The main valve or main electrical disconnect shall be tested to be sure that the power to the machine is off.
- Electrical circuits shall be checked with proper and calibrated electrical testing equipment.
- An electrical failure could energize the equipment even if the switch is in the off position.

## Step 2

Gain access to the front control panel:

- Loosen, but do not remove the bottom and rear screws located in the large slots.
- Remove the top left and right screws.

**Note:** Put screws in a safe place for later.



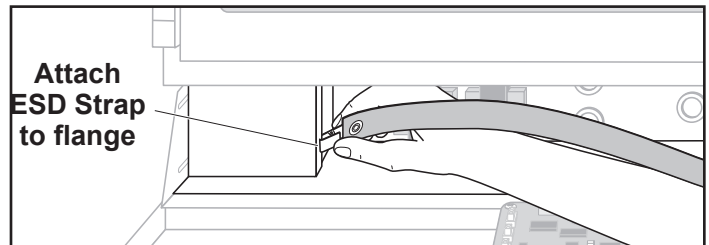
## Step 3

Slide the control panel forward and tilt down the control panel.

## Step 4

Connect ESD Wrist strap to Unit.

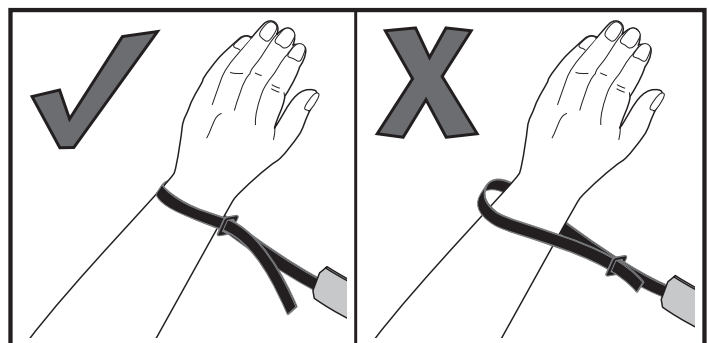
**⚠ CAUTION** Not following ESD protocol could damage electronic components.



## Step 5

Place ESD strap on wrist and tighten.

- Strap must be tight around wrist to be effective.

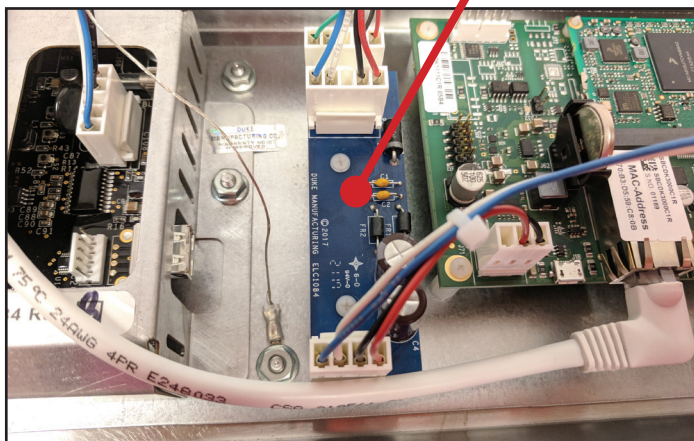


Your Solutions Partner

# ELC1084 PCB Replacement Instructions - cont.

## Step 6

Locate the ELC1084 PCB Filter.



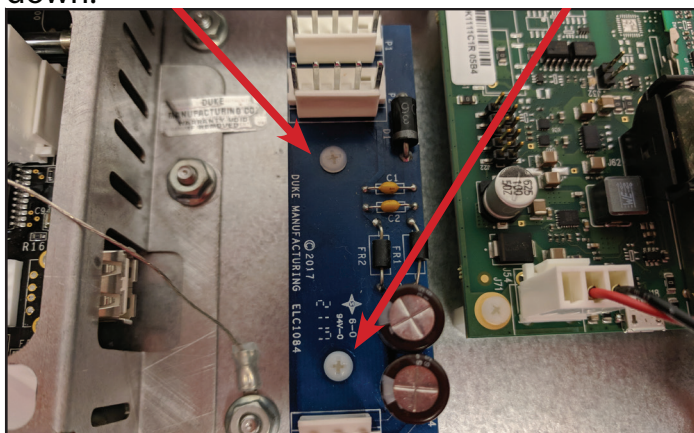
## Step 7

Disconnect all wire harnesses from the board.



## Step 8

Using a small electronic phillips screw driver, remove the two screws holding the board down.



**NOTE:**  
Make sure you save the screws to reattach new board.

## Step 9

Carefully remove the new ELC1084 PCB from it's packaging.

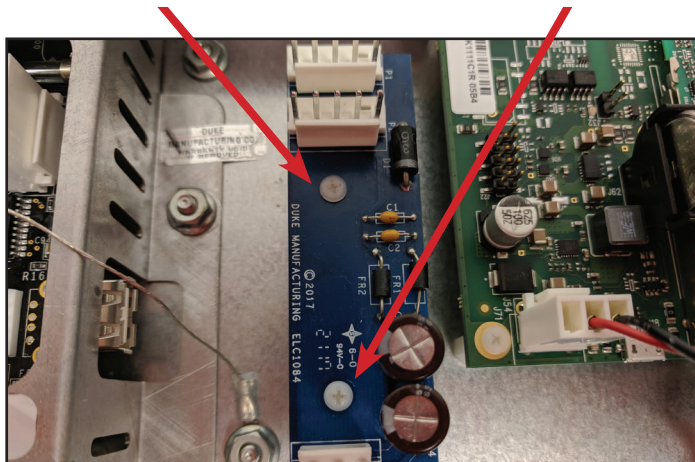
### CAUTION

Make sure you are still grounded with an ESD Strap.

## Step 10

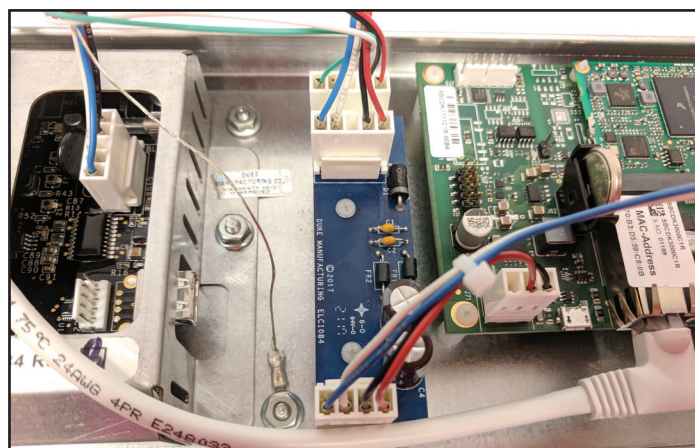
Using the two plastic screws re-mount the new ELC1084 PCB Filter.

**Note:** Do not over tighten screws



## Step 11

Re-connect all wire harnesses to the board.



## Step 12

Dis-connect ESD Wrist strap from Unit.

## Step 13

Slide the control panel back into position and resecure the control panel.

## Step 14

Re-install the two screws removed in step 2.



## ELC1084 PCB Replacement Instructions - cont.

### Step 15

Remove all lockout/tagout and turn unit on.

### Step 16

Run unit for several cycles to make sure unit is properly functioning.

---

## NOTES



*Your Solutions Partner*

### Duke Manufacturing Co.

2305 N. Broadway

St. Louis, MO 63102

Phone: 314-231-1130

Toll Free: 1-800-735-3853

Fax: 314-231-5074

[www.dukemfg.com](http://www.dukemfg.com)