



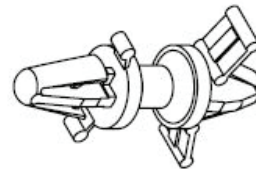
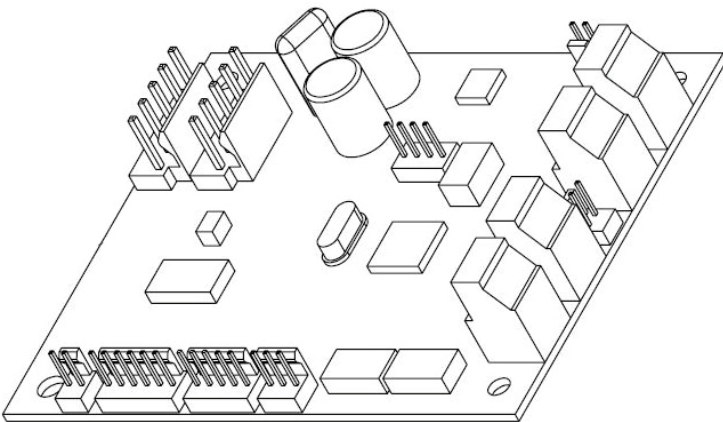
Your Solutions Partner

INSTALLATION INSTRUCTIONS

FLEX BAKE 5 IO3 BOARD

DUKE KIT# **514605**

600528



Kit contains:

- **512418** Strap, Disposable Wrist ESD
- **166101** Support, Lock 3 ea.

Kit **514605**

- ELC0001-1 PCB Board, Flex Bake 5

Kit **600528**

- ELC0001-5 PCB Board, Flex Bake 5

Tools required for this installation:

- Side Cutters
- 1/4" Nut Driver
- 5/16" Nut Driver

*This manual is Copyright © 2017 Duke Manufacturing Co. All rights reserved.
Reproduction without written permission is prohibited. Duke is a registered
trademark of the Duke Manufacturing Co.*

Duke Manufacturing Co.

2305 N. Broadway
St. Louis, MO 63102
Phone: 314-231-1130
Toll Free: 1-800-735-3853
Fax: 314-231-5074

www.dukemfg.com

P/N 514146
REV B 11/27/2017

RPB Replacement Instructions

⚠ WARNING HAZARDOUS VOLTAGE

⚡ CAUTION RISK OF ELECTRIC SHOCK

Step 1

Turn OFF the unit's Power.

Disconnect unit from Mains Supply Voltage using lockout / tagout procedures.

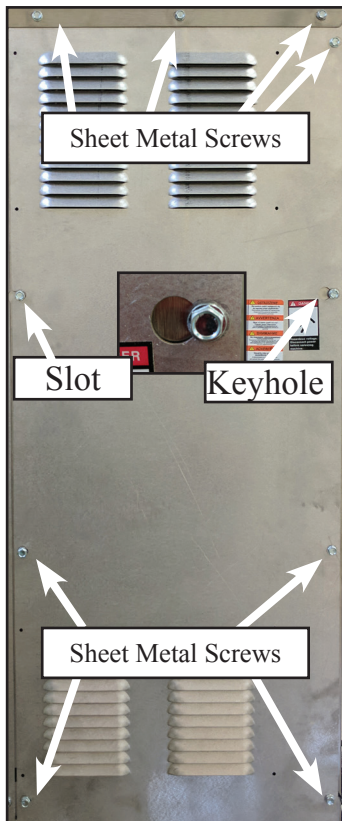
Reference: LOCKOUT / TAGOUT PROCEDURE

- The worker shall check to be sure that no one is operating the machinery BEFORE turning -off the power. The machine operator shall be informed before the power is turned off. Sudden loss of power could cause an accident.
- All energy sources that could activate the machine shall be locked out (blocked/tagged).
- The main valve or main electrical disconnect shall be tested to be sure that the power to the machine is off.
- Electrical circuits shall be checked with proper and calibrated electrical testing equipment. An electrical failure could energize the equipment even if the switch is in the off position.

Step 2

Gain access to the electrical system from the back by:

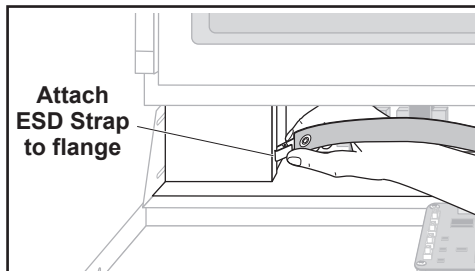
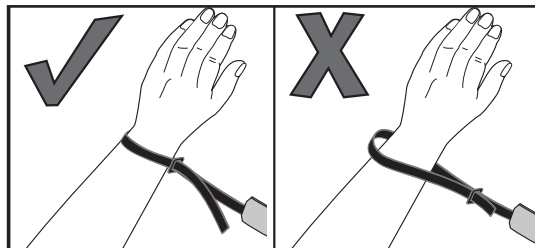
- Removing the 8 sheet metal screws
- Loosen the 2 sheet metal screws with the keyhole/slot.
- Remove the back panel by shifting to the right and out.



Step 3

Place ESD strap on wrist and tighten.

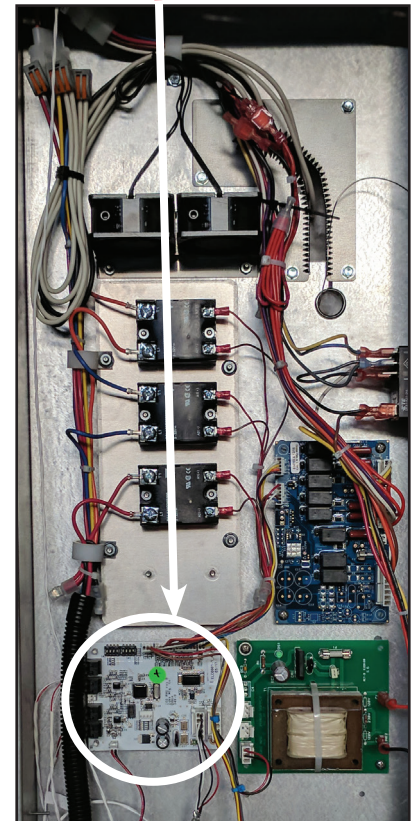
- Strap must be tight around wrist to be effective.
- Connect ESD wrist strap to the main structure of the unit.



Step 4

Locate the IO3 Board and disconnect all wire harnesses.

Note: You might want to take a picture before removing the wire harnesses.

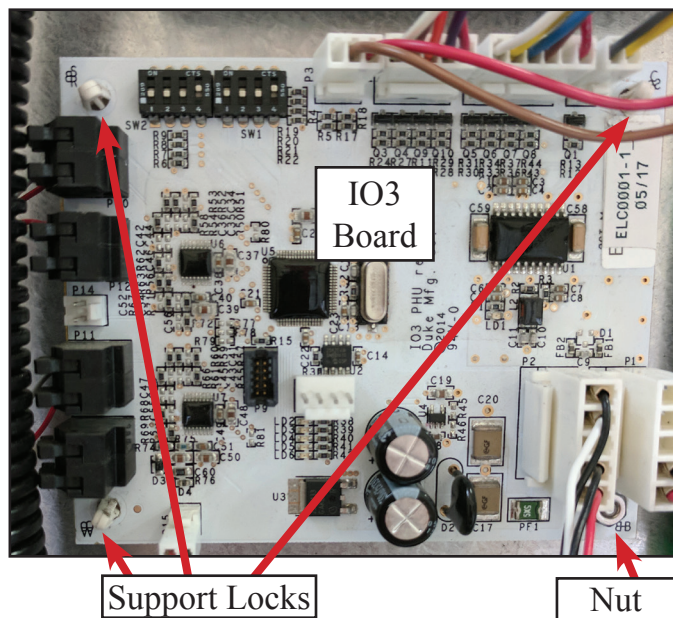


RPB Replacement Instructions - continued

Step 5

Remove board from unit by:

- Using a 1/4" nut driver remove the one nut in the lower right corner.
- Using a pair of side cutters cut off ends of the support locks to release the IO3 board



Step 7

Install 3 new Support Locks.



Step 8

Install new board in unit by:

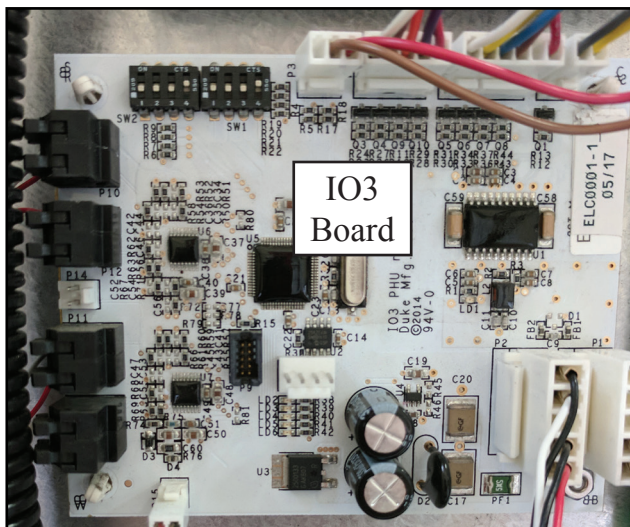
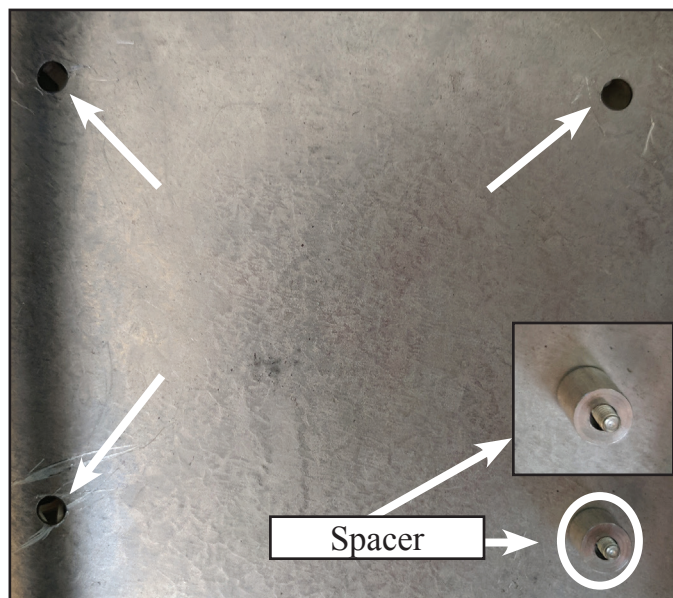
- Push the board onto the support locks
- Note: Make sure the board is fully locked into place with the support locks.**
- Then replace the nut using the 1/4" nut driver.
- Reconnect all the wire harnesses.

Note: Refer to appliance wire diagram if needed.

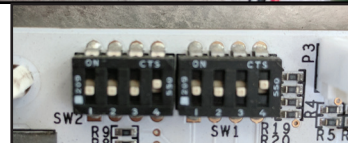
Step 6

- After the board is removed finish cutting away the rest of the support locks.

Note: Make sure not to lose the spacer off on the lower right corner.



Note:
Make sure the dip switches are properly set.



RPB Replacement Instructions - continued

Step 9

Reinstall the back panel

- Place the top of the panel behind the top cover. **See below**
- Place the panel back on the sheet metal screws where the key hole / slot is located to hold the panel in place.
- Secure the panel with the 8 sheet metal screws removed in step 2 - Tighten all sheet metal screws

Step 10

Remove all lockout/tagout and turn unit on.

Step 11

Run unit for several cycles to make sure unit is properly functioning.



NOTES



Your Solutions Partner

Duke Manufacturing Co.

2305 N. Broadway

St. Louis, MO 63102

Phone: 314-231-1130

Toll Free: 1-800-735-3853

Fax: 314-231-5074

www.dukemfg.com