



Your Solutions Partner

Instruction Manual

INFRARED HEATSINK™ HOLDING UNIT CHEF WEB PROGRAMMING GUIDE



**Please read this manual completely
before attempting to program your IRHS.**

*This manual is Copyright © 2015 Duke Manufacturing Co. All rights reserved.
Reproduction without written permission is prohibited. Duke is a registered
trademark of the Duke Manufacturing Co.*

Duke Manufacturing Co.

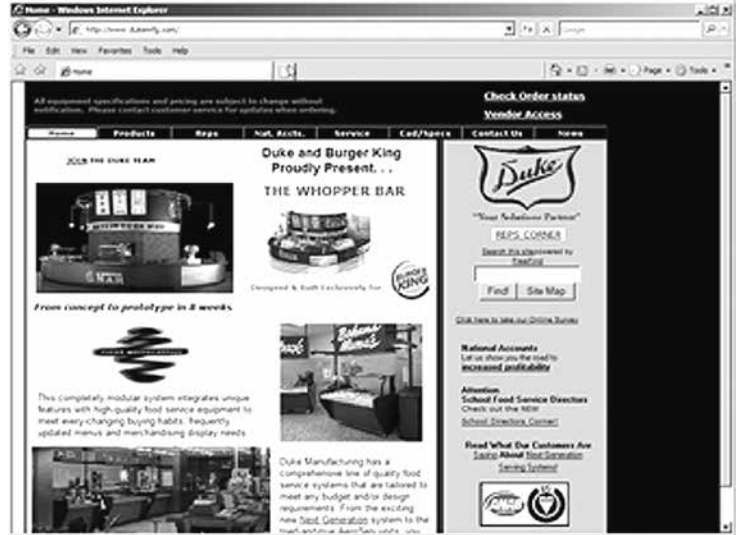
**2305 N. Broadway
St. Louis, MO 63102
Phone: 314-231-1130
Toll Free: 1-800-735-3853
Fax: 314-231-5074
www.dukemfg.com**

**P/N 166283A
10/19/2015**

INFRARED HEATSINK™ Holding Unit Chef's Web Programming Guide

Open the web browser.

Type or paste the website address into the browser address dialog box and press Enter.

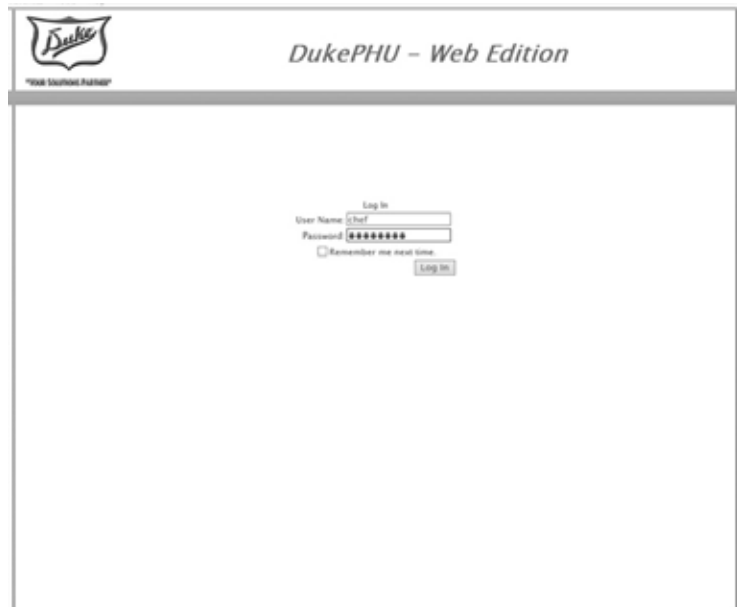


Using the mouse left click the User Name field.

Type the assigned User Name.

Left click the Password field.
Type the password.

Left click the Log In button.



NEW RECIPE

When entering a new product left click New Recipe.

Next, left click the Manual button.



Select the Name dialog box and type the long name of the product.

Example: Test Product



Next, select the short name dialog box and enter the short name of the product.

Short name must be Capital Alpha Numeric 0-9.
 (Site will capitalize if entered in lower case)

Example: TST1

The Short Name can not exceed four characters.

The Short Name will be displayed on the IRHS Holding Unit.



INFRARED HEATSINK™ Holding Unit Chef's Web Programming Guide

Scroll to Product Availability and select the Day Parts that this product can be held for. Select as many as required for the product.

Note: If only one Day Part will be used on the cabinet, click all three Day Parts.



Scroll to Heat Sink Parameters, click the Holding Temperature field and type the holding temperature.

Example: 180°

Use the drop down arrow to change from Fahrenheit to Celsius if Celsius is required.



Scroll to IR Parameters, click the Enable Check Box if a Turbo Boost is required.

Use the drop down arrow to select 1 or 2 minutes.

Example: 2 Minute Turbo Boost



Use the drop down arrow to select idle duty cycle percentage.



If a Lid is desired, left click the Yes box. This prompts the operator to place a lid in this location of the IRHS.



Next, scroll to Phase 1 Parameters. Left click the Holding Time field and type the holding time for the product.

Example: 1:00

Use the drop down arrow to select the IR percent for the Phase 1 time.

Example: 25%

Repeat for Phase 2 and 3.

Note: Holding Time will automatically calculate based on the Phase 1,2 and 3 Times.



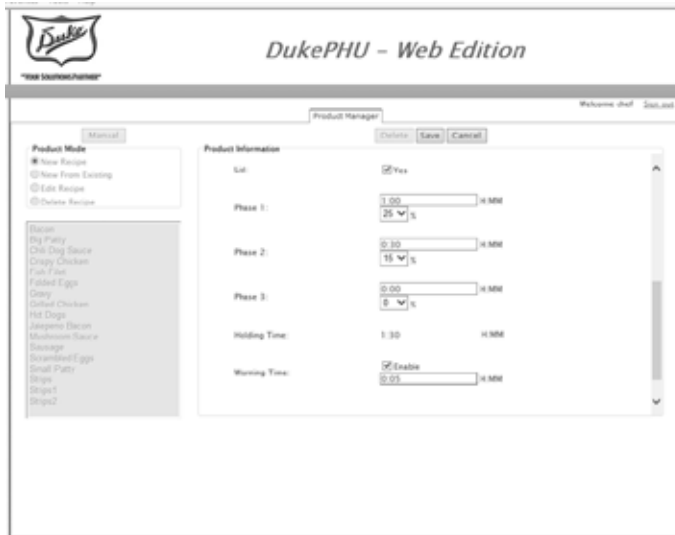
INFRARED HEATSINK™ Holding Unit Chef's Web Programming Guide

If a Warning Time is desired, left click the Enable box. This prompts the operator to prepare more product as hold time is near expiration.

Left click the Warning Time field and type the warning time for the product.

Example: 0:05

Note: The warning Time is based on time remaining, not expired. In this example the warning alarm will sound with 5 minutes remaining on count down timer, not 5 minutes into cycle.



Once all parameters are set, left click the Save button.



The Product Manager main screen is displayed.

The product just added will appear alphabetically in the scroll down menu.

Repeat these procedures to add new recipes.



NEW FROM EXISTING

For a similar product, use the New From Existing selection.

Left Click New From Existing selection.

Left Click on the product you want to Copy.

Next, left click the Manual button.



Each new product MUST have a different Name and Short Name.

Select the Name dialog box and type the long name of the product.



Next, select the short name dialog box and enter the short name of the product.

The Short Name can not exceed four characters.



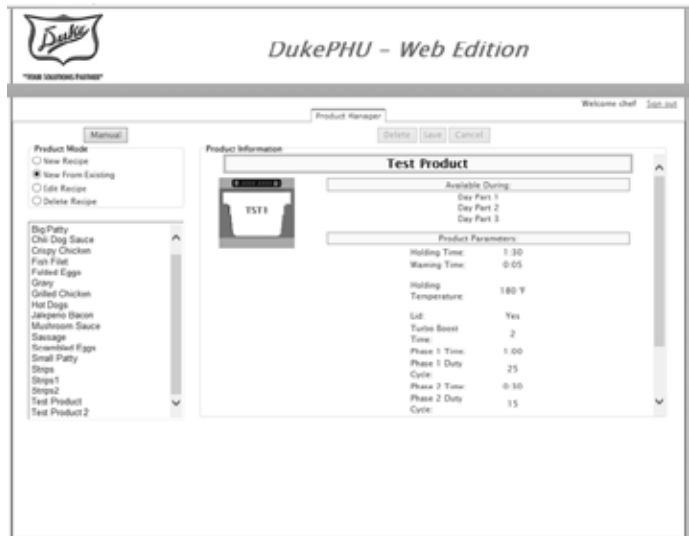
INFRARED HEATSINK™ Holding Unit Chef's Web Programming Guide

Once all parameters are set, left click the Save button.



The Product Manager main screen is displayed.

The product just added will appear alphabetically in the scroll down menu.



EDIT RECIPE

To edit an existing product, first, select the product from the drop down list.

Next, click Edit Recipe.

Click the Manual button.



Edit the fields as needed to update the recipe.

Click Save to save the changes



The Product Manager main screen is returned. It displays a summary of the product just edited.

Continue editing products as needed.



DELETE RECIPE

To delete a product, first, select it from the drop down list.

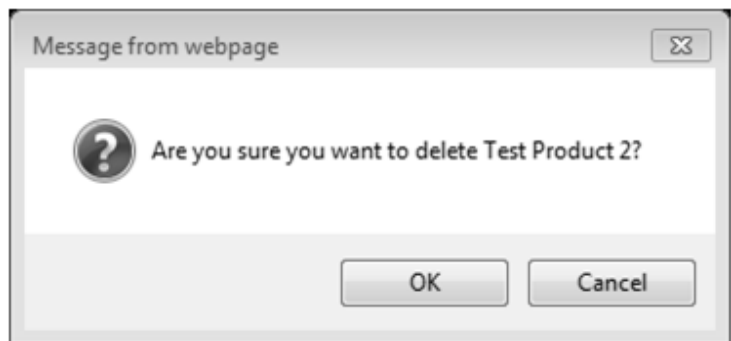
Next, select Delete Recipe.

Left click the Delete button.



Click OK in the “Are you sure...” dialog box to continue with the deletion of a product.

Click Cancel to cancel the delete.



The product is now removed from the product list.







Your Solutions Partner

Duke Manufacturing Co.

2305 N. Broadway
St. Louis, MO 63102
Phone: 314-231-1130
Toll Free: 1-800-735-3853
Fax: 314-231-5074

www.dukemfg.com



Your Solutions Partner

Instruction Manual

INFRARED HEATSINK™ HOLDING UNIT MANAGER'S WEB PROGRAMMING GUIDE



**IMPORTANT INFORMATION, READ BEFORE USE.
PLEASE SAVE THESE INSTRUCTIONS.**

*This manual is Copyright © 2015 Duke Manufacturing Co. All rights reserved.
Reproduction without written permission is prohibited. Duke is a registered
trademark of the Duke Manufacturing Co.*

Duke Manufacturing Co.

**2305 N. Broadway
St. Louis, MO 63102
Phone: 314-231-1130
Toll Free: 1-800-735-3853
Fax: 314-231-5074**

www.dukemfg.com

**P/N 166284A
10/19/2015**



CREATING A NEW MENU

Open the web browser.

Type or paste the website address into the browser address dialog box and press Enter.



Using the mouse left click the User Name field.

Type the assigned User Name.

Left click the Password field.

Type the password.

Left click the Log In button.



Cabinets are configured using the Menu Creator tab.



Select the PHU cabinet that will be programmed.

EX: 2X3 IRHS



Select the day part to be programmed. If only one day part is required, select Day Part All.

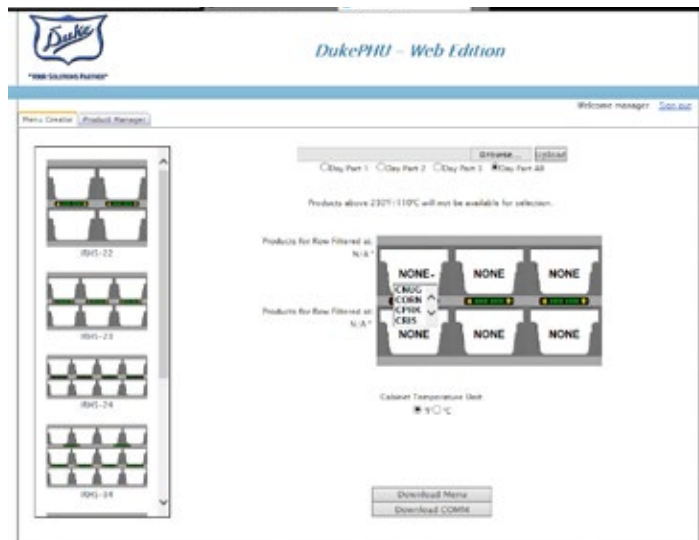
Select the Cabinet Temperature Units F° or C°.

Next, Move the cursor to the PHU well to be programmed.

Place the cursor over the well to be programmed and left click to display the list of choices.

Scroll through the drop down list and left click the item to be programmed.

If a product is selected in error or different temp products are desired, all wells for that heat zone must be reset to "NONE".



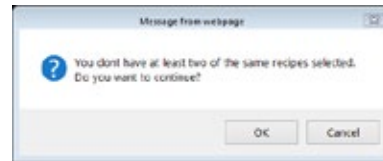
Repeat the programming steps for each Day Part that has a different menu.

"NONE" should not be in any well. Insert an empty Flash, sometimes called a Jump, Drive into an open USB port on the computer.

Scroll to Download Menu button and left click it.



Click "OK".

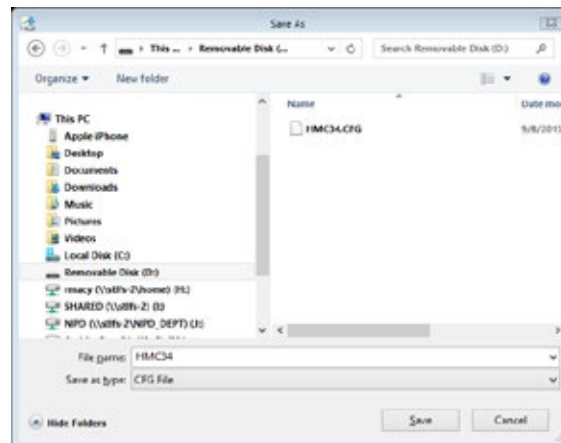


Click Save in the "Do you want to save this file?" dialog box.

Select "SaveAs".



Save to "Jump Drive".

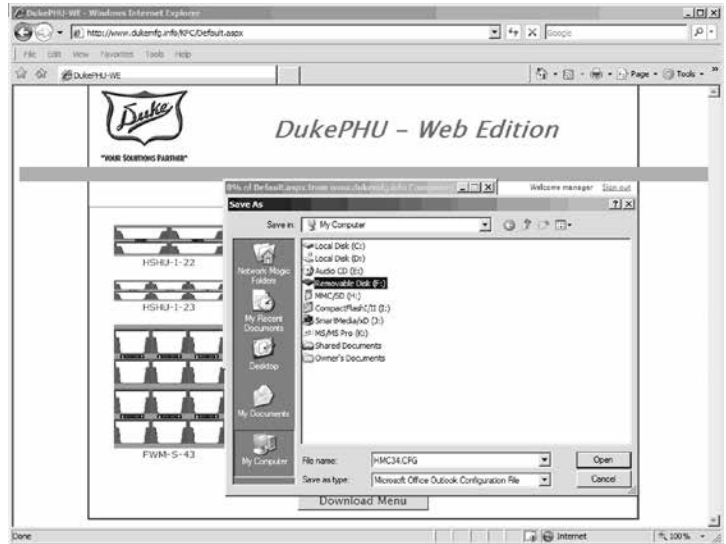


The Save As dialog box will be displayed. The appearance of the screen may vary depending on the computer settings.

Using the left mouse button, double click the My Computer icon.

Note: Depending on computer settings, you may be directed to the flash drive automatically.

Do not change the file name. The IRHS will not recognize any modified file names. Name must remain "HCM34.cfg".



Using the mouse select the Flash drive from the list of available drives.

Next, left click the Open button.

Wait until the file is completely saved on the Flash drive.

Use the Flash drive's eject option to safely remove the Flash drive from the computers USB port.



Move the power switch on the Duke IRHS cabinet to its ON position.

Insert the Flash drive into the IRHS cabinet's USB port.

The program download will start automatically. If it does not start, turn the IRHS cabinet OFF and back ON again.

The IRHS cabinet will make a chirping sound when the download is complete.

Remove the Flash Drive from the IRHS cabinet's USB port.



REVISING A CABINET SETTING

Insert a blank jump drive into the IRHS. Ensure that the jump drive does not have any files on it before inserting it into the IRHS. If an HCM34.cfm file is on the jump drive it will overwrite the programming loaded in the IRHS.

If the program is on the jump drive and it is the last one loaded into the PHU insert the jump drive into a USB port on the computer.

Log onto the Website. On the Menu Creator click Browse.

Find the jump drive on the computer and locate the HCM34.cfm file.

Double click on the HCM34.cfm file. When it appears in the dialog box, click Upload.

The cabinet with all of its programmed products will appear.

Make the desired changes and repeat the download process.





Your Solutions Partner

Duke Manufacturing Co.

2305 N. Broadway
St. Louis, MO 63102
Phone: 314-231-1130
Toll Free: 1-800-735-3853
Fax: 314-231-5074

www.dukemfg.com