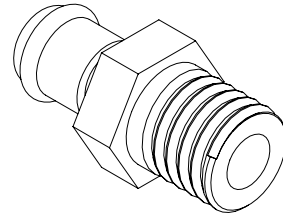
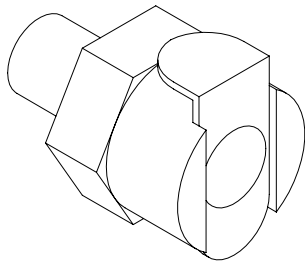




Your Solutions Partner

INSTALLATION INSTRUCTIONS

QUICK DISCONNECT REPLACEMENT INSTRUCTIONS FOR DUKE KIT# 600185



Items required for this installation:

- 1/2" Open End Wrench
- 3/4" Open End Wrench
- 5/8" Open End Wrench
- Roll of Teflon Tape

*This manual is Copyright © 2011 Duke Manufacturing Co. All rights reserved.
Reproduction without written permission is prohibited. Duke is a registered
trademark of the Duke Manufacturing Co.*

Duke Manufacturing Co.

**2305 N. Broadway
St. Louis, MO 63102
Phone: 314-231-1130
Toll Free: 1-800-735-3853
Fax: 314-231-5074
www.dukemfg.com**

Installation Instructions Quick Disconnect Replacement

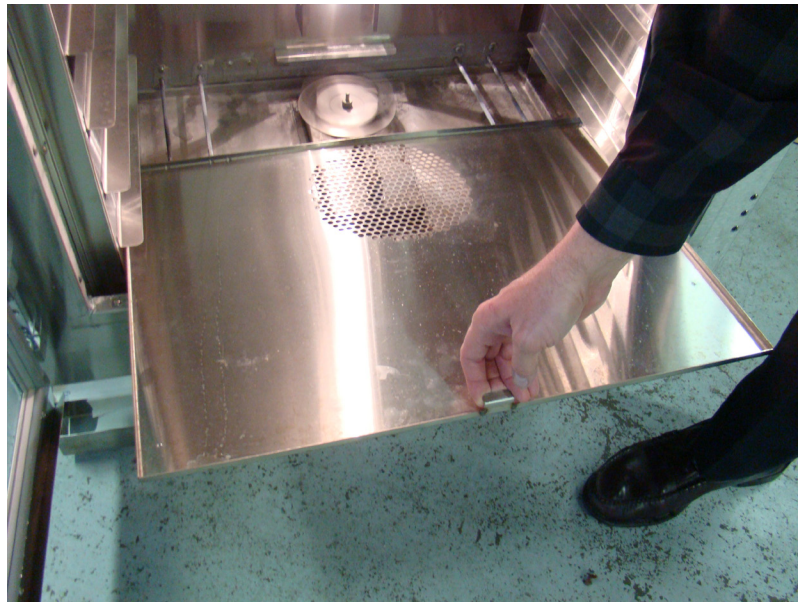
- 1.) Turn power to the Proofer off by using the Touch Screen. **NOTE:** It is not necessary to turn off water supply to the unit.



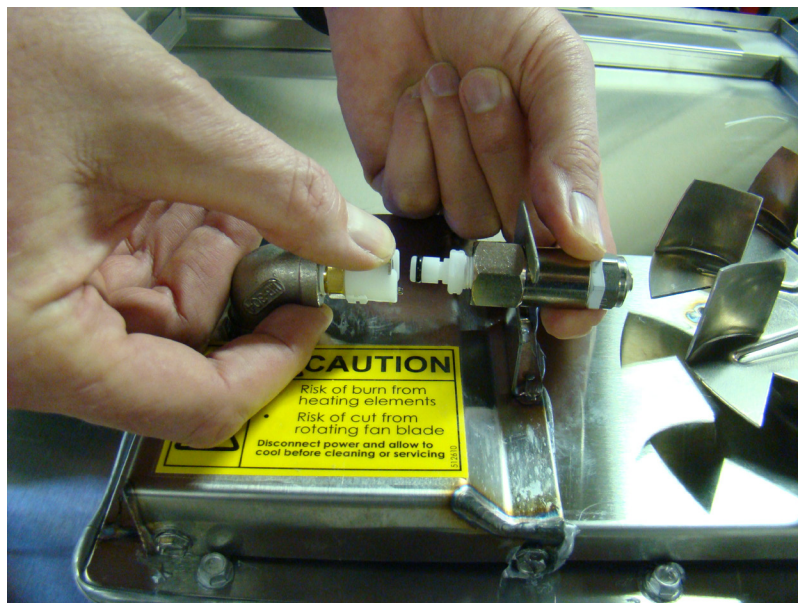
- 2.) Remove necessary racks from proofer to gain access to the bottom of the proofer.



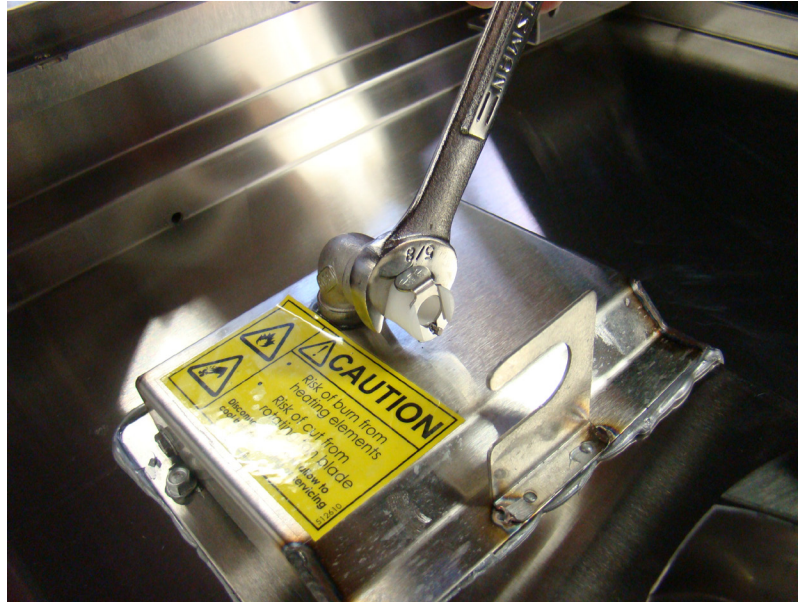
3.) Remove Weldment, False bottom from the proofer.



4.) Wait until fan blade has stopped rotating. Then, use quick disconnect lever to remove the coupling and nozzle assembly by pushing the lever down and sliding the assembly straight out.



5.) Use 5/8" wrench to remove remaining coupling body.



6.) Use Teflon Tape to wrap threads of new coupling body.



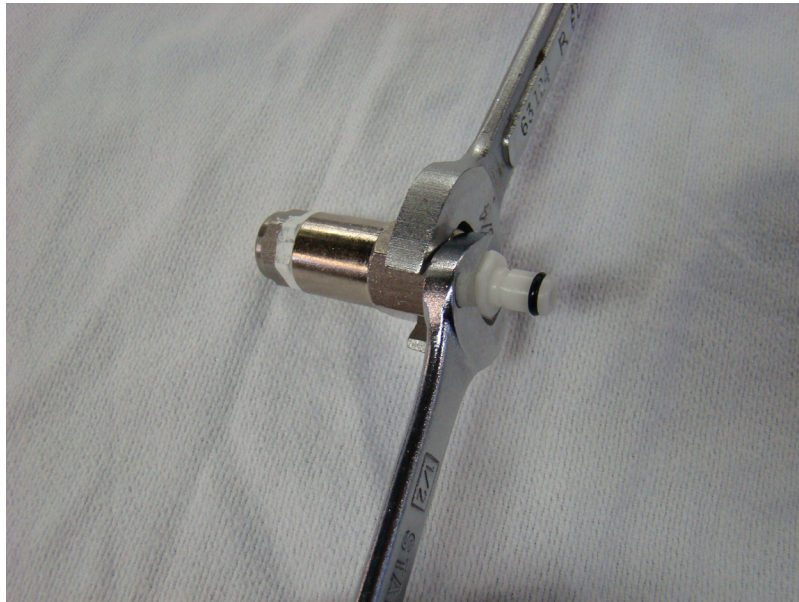
7.) Use 5/8" wrench to install new coupling body.



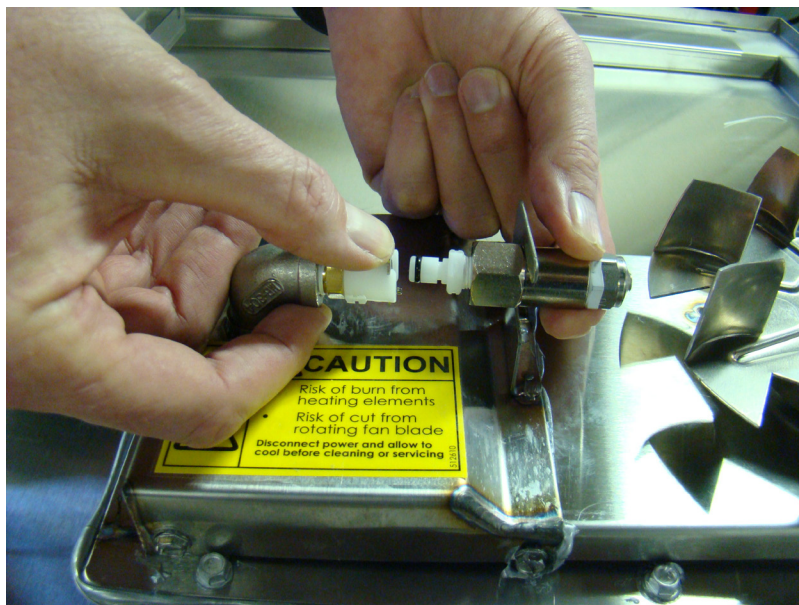
8.) Use Teflon tape to wrap the threads of coupling insert.



- 9.) Use 1/2" wrench on coupling insert & 3/4" wrench on nozzle housing to unite the two pieces.



- 10.) Use quick disconnect feature to reinstall coupling & nozzle assembly into the coupling body. Hold tab of coupling body down while installing the coupling & nozzle assembly all the way into the coupling body. Note: Make sure assembly is inserted all the way in and the quick release tab engages the groove of the mating coupling by slightly pulling on the assembly to ensure the tab is latched.



- 11.) Turn power to the Proofer back on by the Touch Screen and allow a few minutes to purge out any air bubbles in the system. After the nozzle starts to spray check assembly for any leaks.



- 12.) Reinstall Weldment, False Bottom & Proofer racks.





Your Solutions Partner

Duke Manufacturing Co.

Duke Corporate, Canada, Latin America
2305 N. Broadway
St. Louis, MO 63102
Phone: 314-231-1130
Toll Free: 800-735-3853
Fax: 314-231-5074
www.dukemfg.com

Duke EMEA - Europe, Middle East, Africa, Russia
Duke Manufacturing CR, s.r.o.
Zdebradska 92
Jazlovice, Ricany
Building number DC 4 on the
ProLogis Park Prague D1 West
Prague 251 01
Czech Republic
Phone: +420 257 741 033
Fax: +420 257 741 039

Duke EMEA – UK, Ireland, Nordic Countries
Duke Manufacturing UK Ltd.
Unit 10, Greendale Business Park
Woodbury Salterton
Exeter, EX5 1EW
Phone: +44 (0) 1395 234140
Fax: +44 (0) 1395 234154

Duke Asia Pacific
Duke Manufacturing
No.3 Building
Lane 28, Yu Lv Road
Malu Town, Jiading District
Shanghai 201801, China
Phone: +86 21 59153525 / 59153526
Fax: +86 21 33600628